



GAMMA RAY

NEUTRON

COLLAR

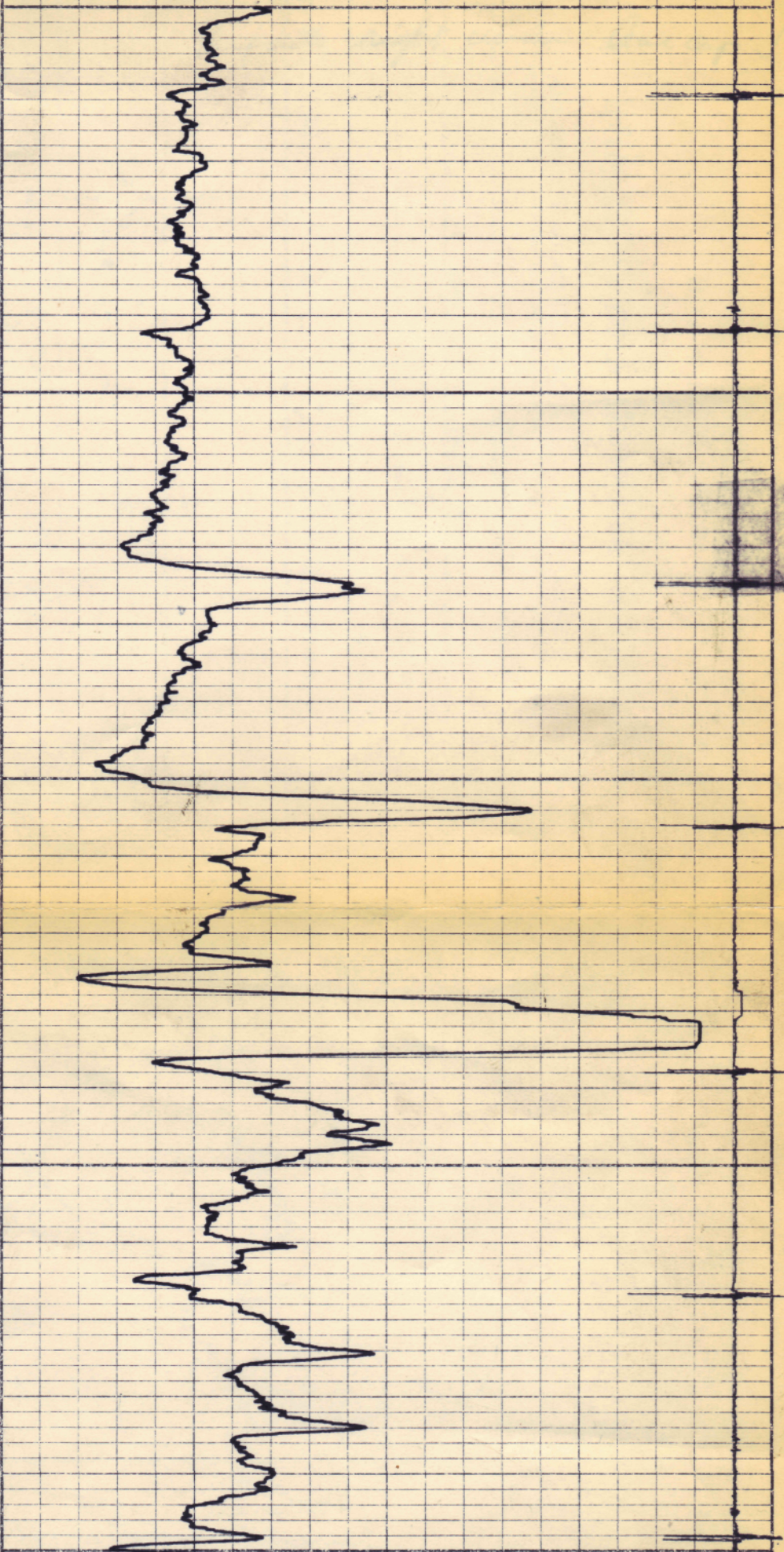
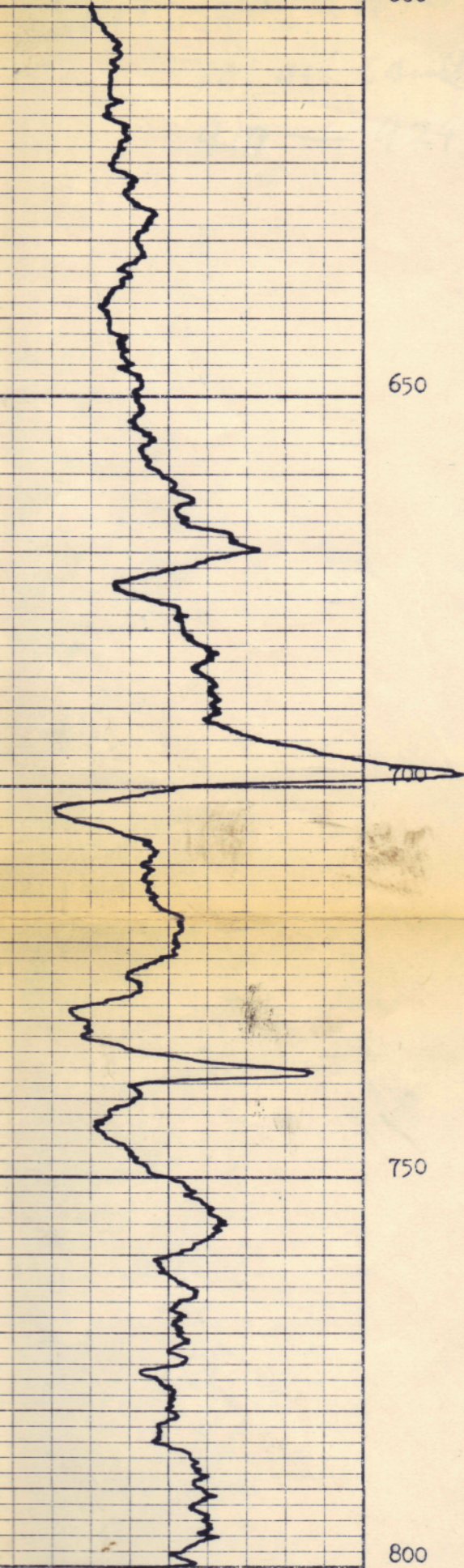
600

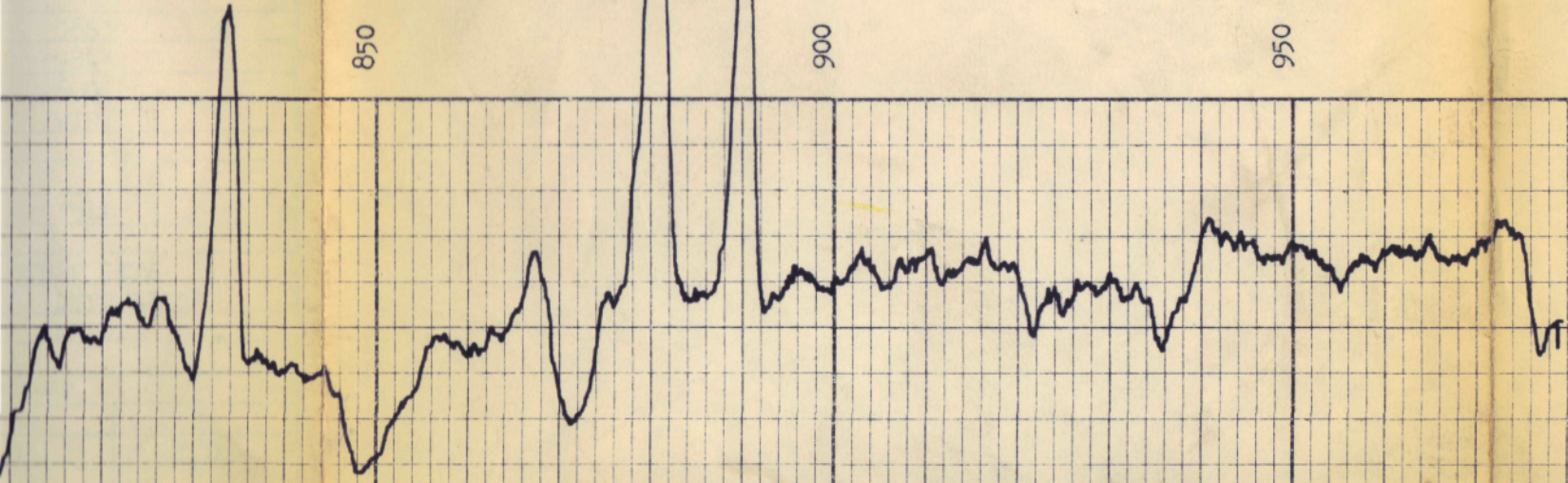
650

700

750

800





850

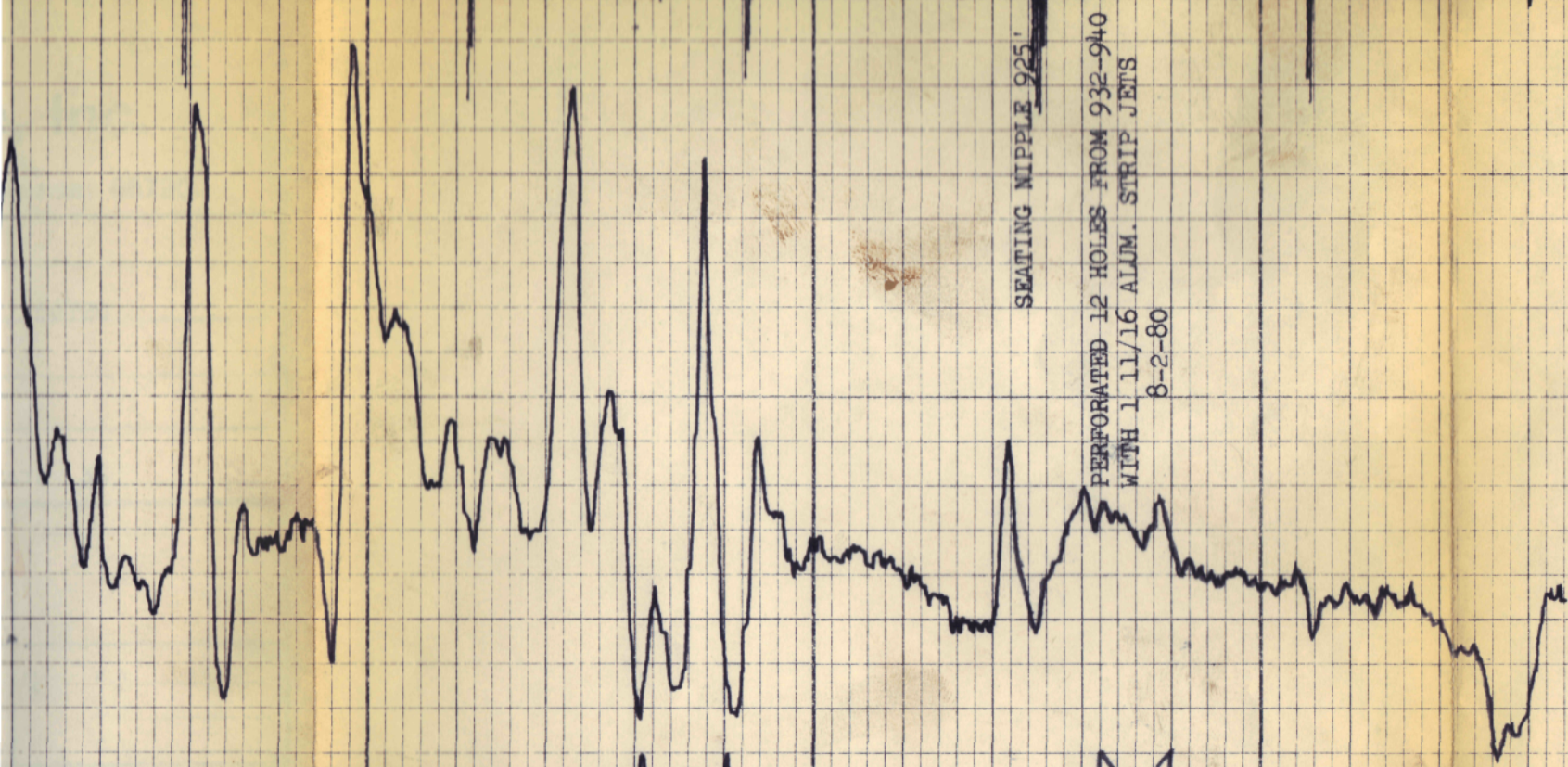
900

950

R.D. 979'

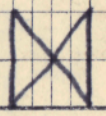
T.D. 985'

LEEDY & BEEMAN  
 ENTZ # 14  
 WOODSON COUNTY, KS  
 8-2-80



SEATING NIPPLE 925'

PERFORATED 12 HOLES FROM 932-940  
 WITH 1 11/16 ALUM. STRIP JETS  
 8-2-80



R.D. 984'

T.D. 985'