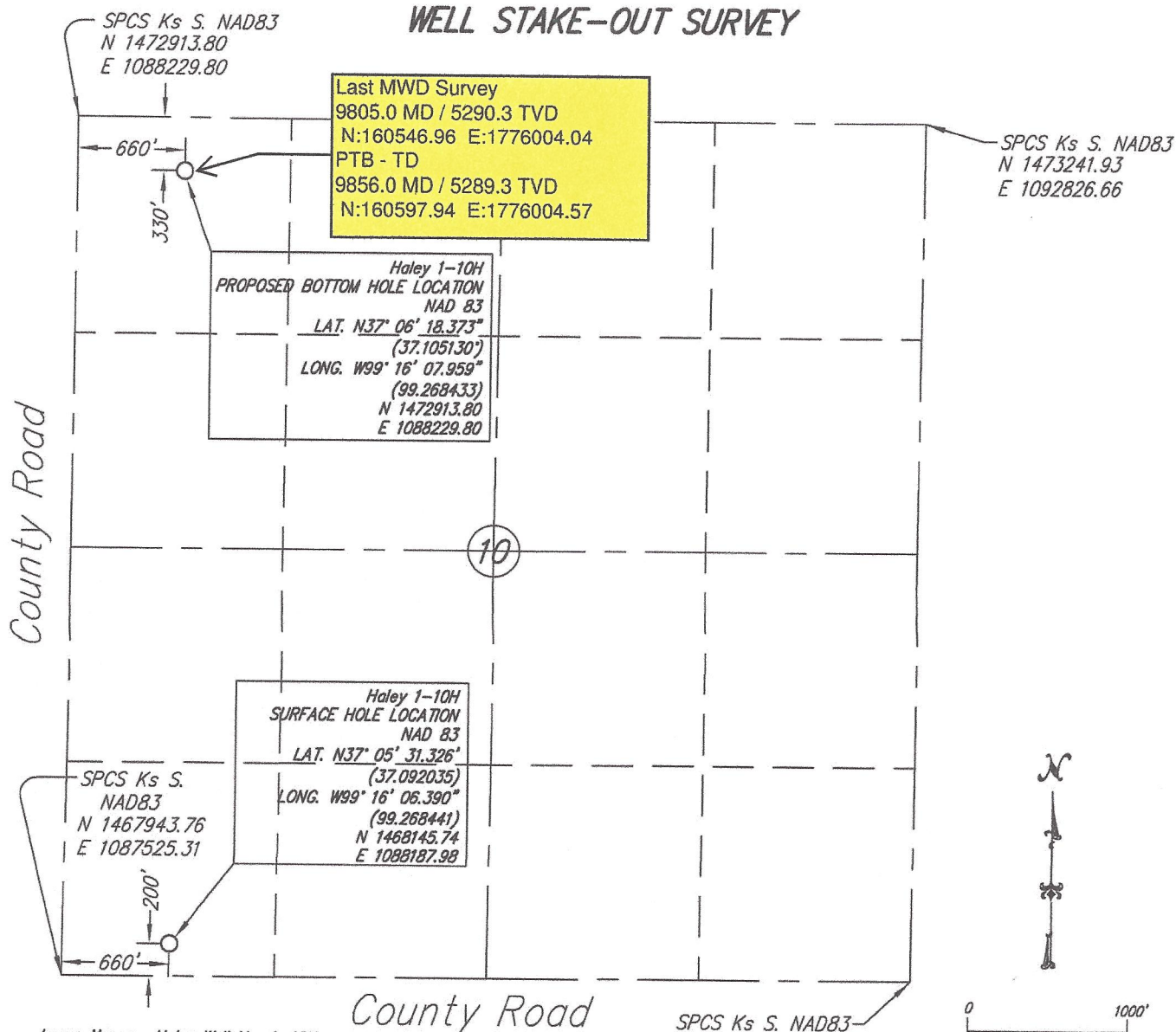




# WELL STAKE-OUT SURVEY



Lease Name: Haley Well No. 1-10H  
 Surface Hole Elevation at Stake: 1838.31 NAVD88  
 Bottom Hole Elevation at Stake: 1879.01 NAVD88  
 Well Location Co./State: Comanche County, Kansas  
 Well Location Section: 10-T34S-R18W

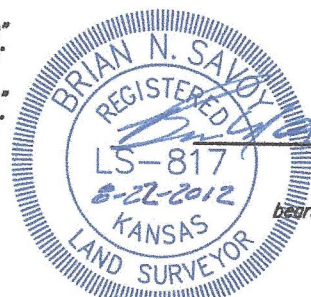
SPCS Ks S. NAD83  
 N 1467959.76  
 E 1092782.80



**Alternate Datums:**

	Horz. Datum NAD 27	
Haley #1-10H Surface Hole	Lat. N37°05'31.230" N 37.092008°	Long. W99°16'04.990" W99.268053°
Haley #1-10H Bottom Hole	Lat. N37°06'18.373" N37.105104°	Long. W99°16'04.959" W99.268044°

**SURVEY DATUMS (shown on drawing)**  
 Horizontal Datum NAD83 (CORS96)  
 Vertical Datum NAVD88 (GEOID09)  
 Kansas SPCS South Zone (US Feet)



Brian N. Savoy, RLS #817  
 This survey is valid only if print  
 bears Surveyor's seal, signed in blue ink.

State of Kansas )  
 ) SS  
 Sedgwick County )

This is to certify that this map or plat and the survey on which it is based was made by me or under my direct supervision and that, to the best of my knowledge and belief, this is a true and correct exhibit of said survey. The wells shown hereon were staked May 3, 2012 at the coordinate location noted.



**Savoy Company, P.A.**  
 Land Surveyors  
 433 S. Hydraulic, Suite 104, Wichita, KS 67202  
 PH (316) 265-0005  
 FAX (316) 265-0225  
 www.savoyco.com



**POE & ASSOCIATES, INC.**  
 CONSULTING ENGINEERS  
 5940 E. Central, Suite 200, Wichita, KS 67208-4242  
 Phone 316/685-4114 FAX 316/685-4444