



WESLEY D. HANSEN Consulting Petroleum Geologist

212 N. Market, Suite 257, Wichita, KS 67202
Office: 316-267-7313 Cellular: 316-772-6188

KGS
KARG
Kansas License #418

LITHOLOGY STRIP LOG

Well Location: Abercrombie Energy, LLC #1-9 Moore
Location: 1800' FSL, 1390' FEL of Section 9-205-34W

Region: Scott County, KS

Licence Number: 11-2-2012
Spud Dates: 11-2-2012
Surface Coordinates: 1800' FSL, 1390' FEL of 9-205-34W
Drilling Completed: 11-14-2012

Bottom Hole Coordinates: 1800' FSL, 1390' FEL of 9-205-34W
Ground Elevation (ft): 3650' **K.B. Elevation (ft):** 3062'
Logged Interval (ft): 3050' **To:** RTD **Total Depth (ft):** 4982'
Formation: Mississippian at RTD
Type of Drilling Fluid: Chemical

Printed by MUDLOG from WellSight Systems 1-800-447-1534 www.WellSight.com

OPERATOR

Company: Abercrombie Energy, LLC
Address: 10209 W. Central, Suite 2
Wichita, KS 67212

GEOLOGIST

Name: Wesley D. Hansen
Company: Wesley D. Hansen - Consulting Petroleum Geologist
Address: 212 N. Market, Suite 257
Wichita, KS 67202
Office: 316-263-7313 Cellular: 316-772-6188

COMMENTS

Contractor: VAL Energy, LLC Rig No. 7
Pusher: James Schultz
Surface Casing: 8 5/8" set at 301' w/ 190 x 3
Production Casing: 5 1/2" set at +-0-4982'
Mud by: MudCo - Tony Maestas was the engineer
DST's by: Tribolite Testing - Jace McKinney was the tester
Logs by: Nabors (DL, CN-CD-PE, ML, Soni), Jeff Luebbers was the engineer
Deviation Surveys: 3/4 deg. @ 302'; 2 deg. @ 4982'

BIT RECORD

Bit #	Size	MFG	Type	Depth Out	Footage Cut	Hours on bit
1	12 1/4"	JJZ	rerun	302'	302'	3 3/4
2	7 7/8"	JJZ	QX28	4435'	4433'	118 1/4
3	7 7/8"	JJZ	QX28	4978'	247'	16 1/4

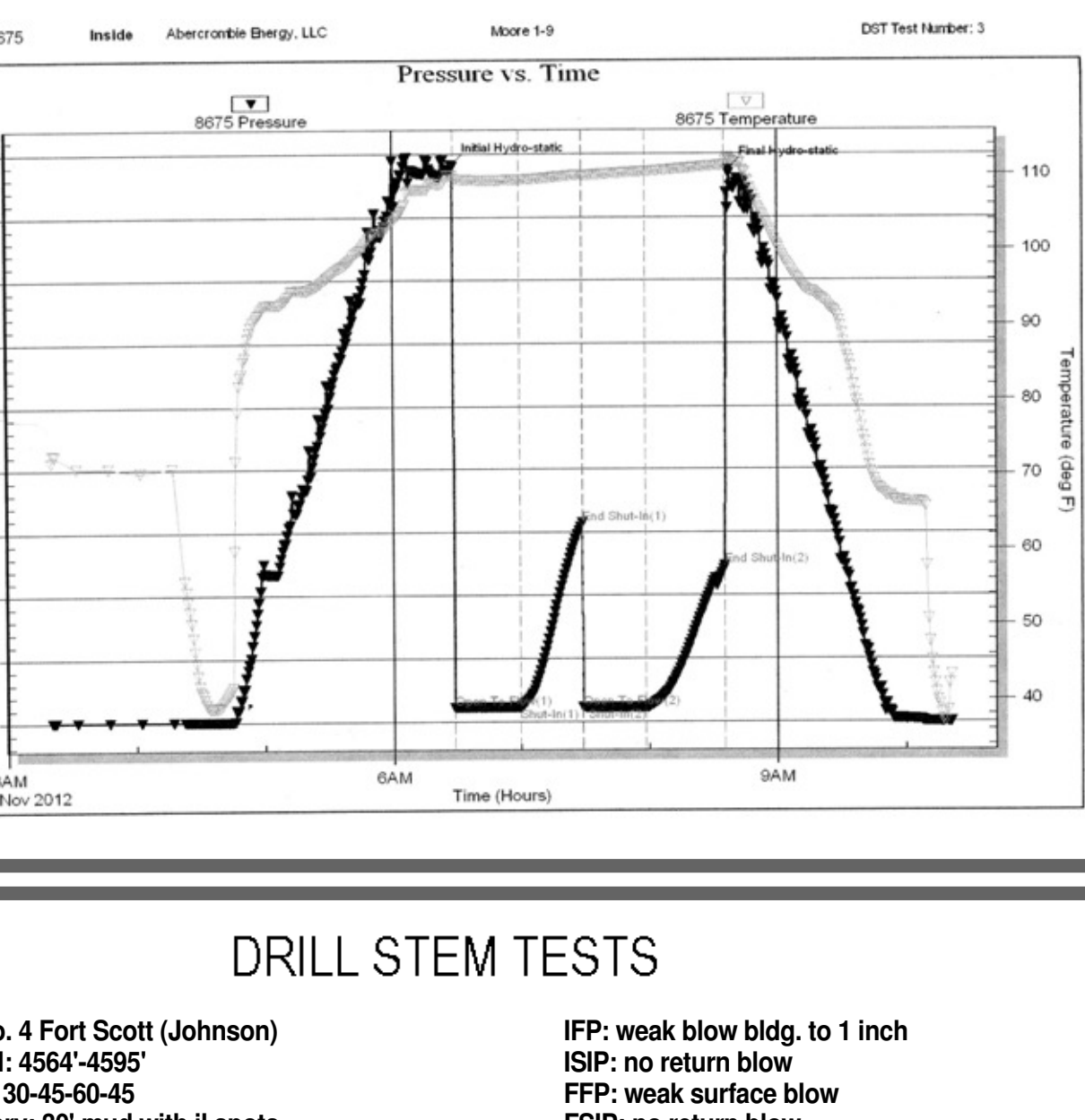
FORMATION TOPS AND STRUCTURAL COMPARISON

FORMATION	SAMPLE TOPS		LOG TOPS		COMPARISON WELL
	Depth	Datum	Depth	Datum	
Anhydrite	2259'	+810	2257'	+812	-1'
B/Anhydrite	2281'	+788	2273'	+796	-2'
Heebner Shale	3943'	-874	3940'	-871	+6'
Lansing	3988'	-919	3986'	-917	+4'
Muncie Creek Shale	4187'	-1118	4186'	-1117	+2'
Stark Shale	4296'	-1229	4299'	-1230	+1'
Belm	4436'	-1367	4427'	-1367	+6'
Marmaton	4466'	-1397	4462'	-1393	+12'
Beymer/Pawnee	4554'	-1485	4554'	-1485	+4'
Johnson/Fort Scott	4580'	-1511	4576'	-1507	+6'
Cherokee Shale	4593'	-1524	4596'	-1521	+4'
Morrow	4776'	-1707	4770'	-1707	+4'
Mississippian	4882'	-1813	4881'	-1812	-10'
RTD			4882'	-1913	
LTD					

DRILL STEM TESTS

DST No. 1 Lansing/Kansas City "K"
Interval: 4296'-4500'
Times: 30-45-60-90
Recovery: 76' WCM (10m, 90m); 310' (40m, 60w); 124' MCV (10m, 90w); 510' chl, 30,000
FP: 25-122/126-259 SIP: 1128-1105
HP: 2198-2140 BHT: 115 deg. F

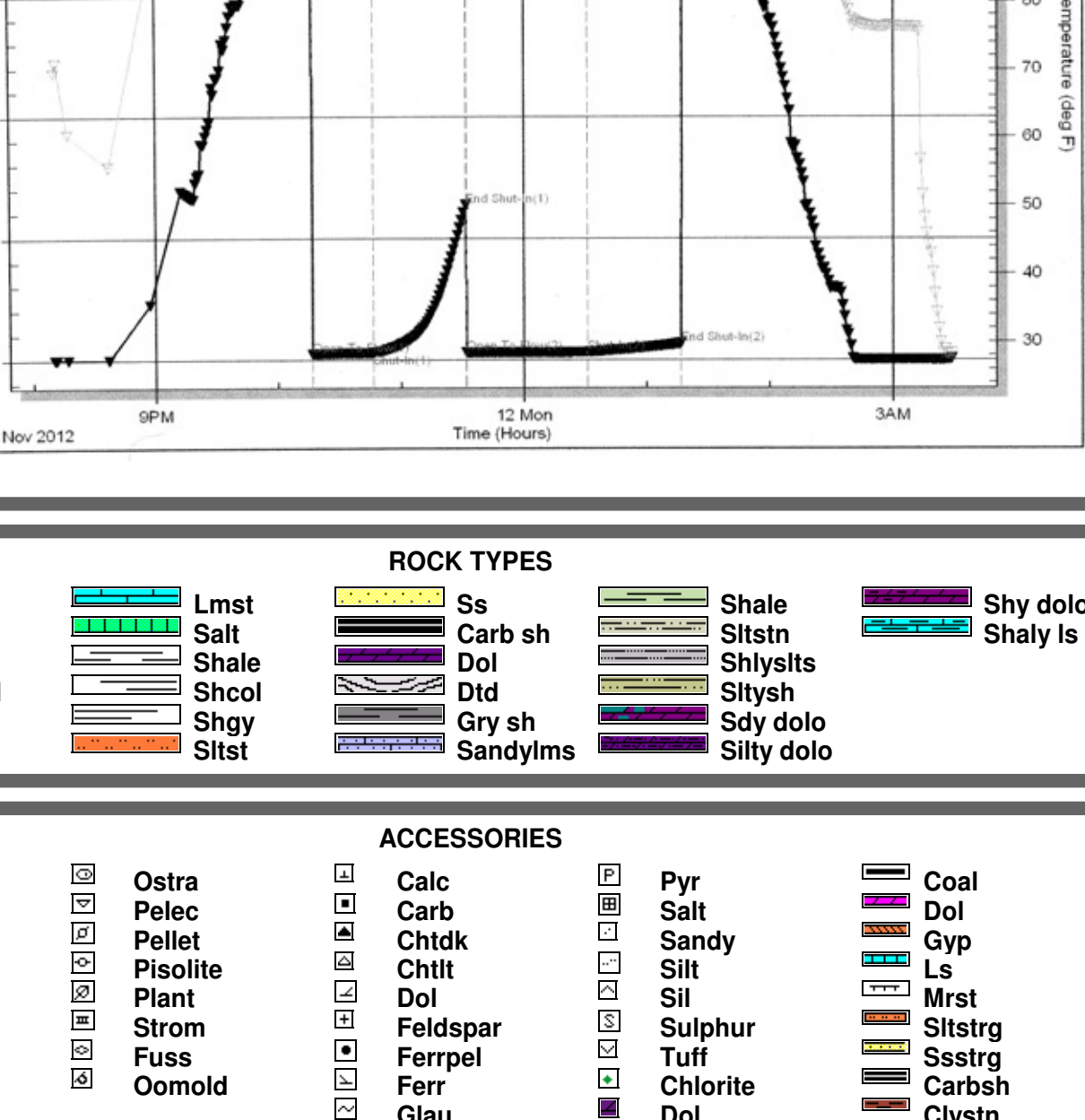
IPF: slowly bldg. to B.O.B. in 24 minutes
ISIP: no return blow
FFP: strong blow, B.O.B. in 2 1/2 minutes
FSIP: no return blow



DRILL STEM TESTS

DST No. 2 Marmaton
Interval: 4540'-4500'
Times: 30-45-60-90
Recovery: GTS late in FSIP; 2108' GP: 640'
GCO (10q, 90q); 620' GCO (30q, 70q); 864' GCO (15q, 85q); 186' MW&GCO (10m, 20w, 30q, 40q)
total fluid 2310'; oil gravity 34 deg.
FP: 107-373-392-746 SIP: 1150-1145
HP: 2262-2172 BHT: 121 deg. F

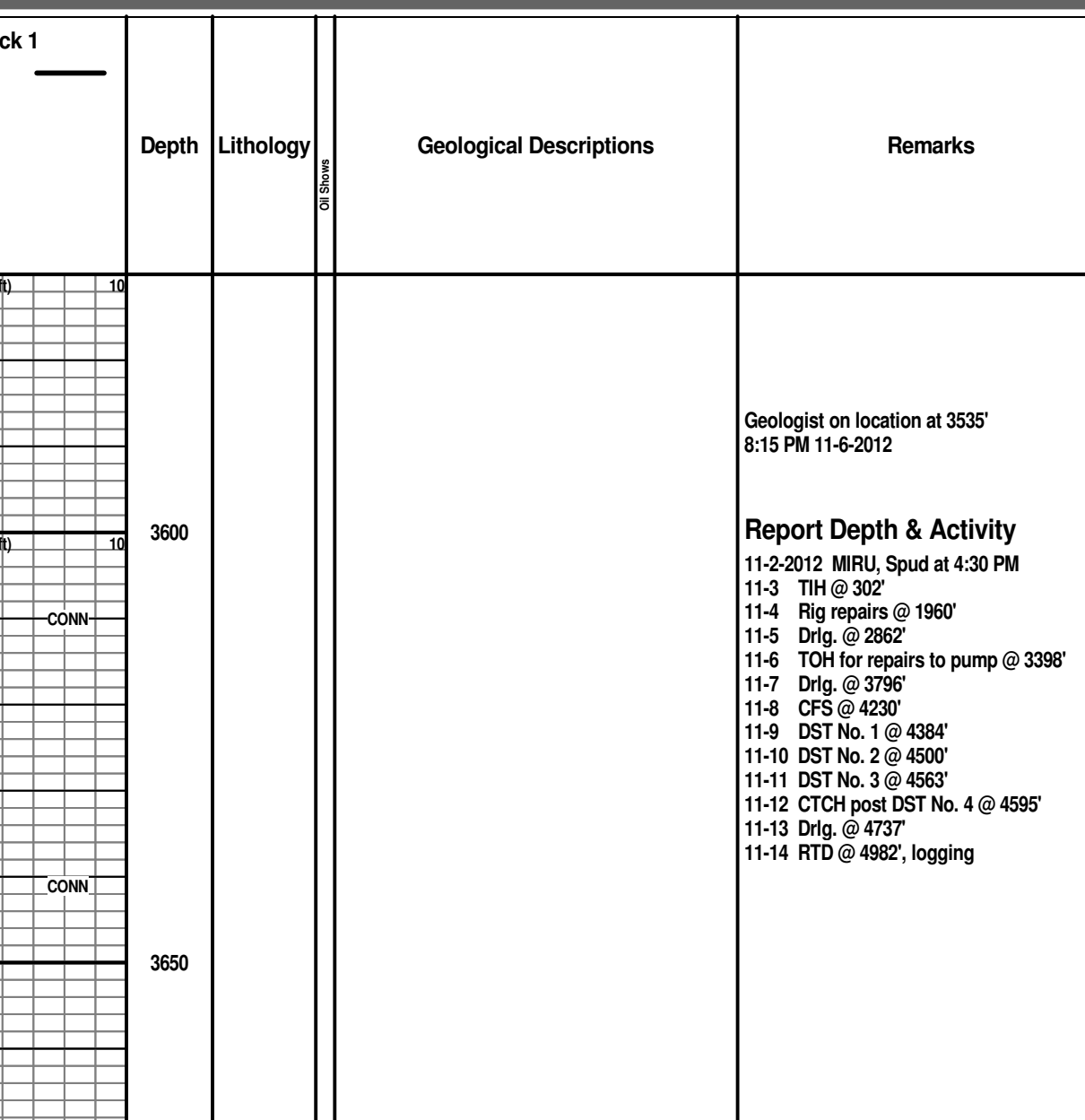
IPF: strong blow, B.O.B. in 1 minute
ISIP: built to B.O.B. in 12 minutes
FFP: strong blow, B.O.B. in 2 1/2 minutes
FSIP: built to B.O.B. in 23 minutes



DRILL STEM TESTS

DST No. 3 Pawnee (Elymer)
Interval: 4540'-4563'
Times: 30-30-30-30
Recovery: 75' mud with few oil spots
FP: 55-56-56-57 SIP: 786-617
HP: 2204-2188 BHT: 110 deg. F

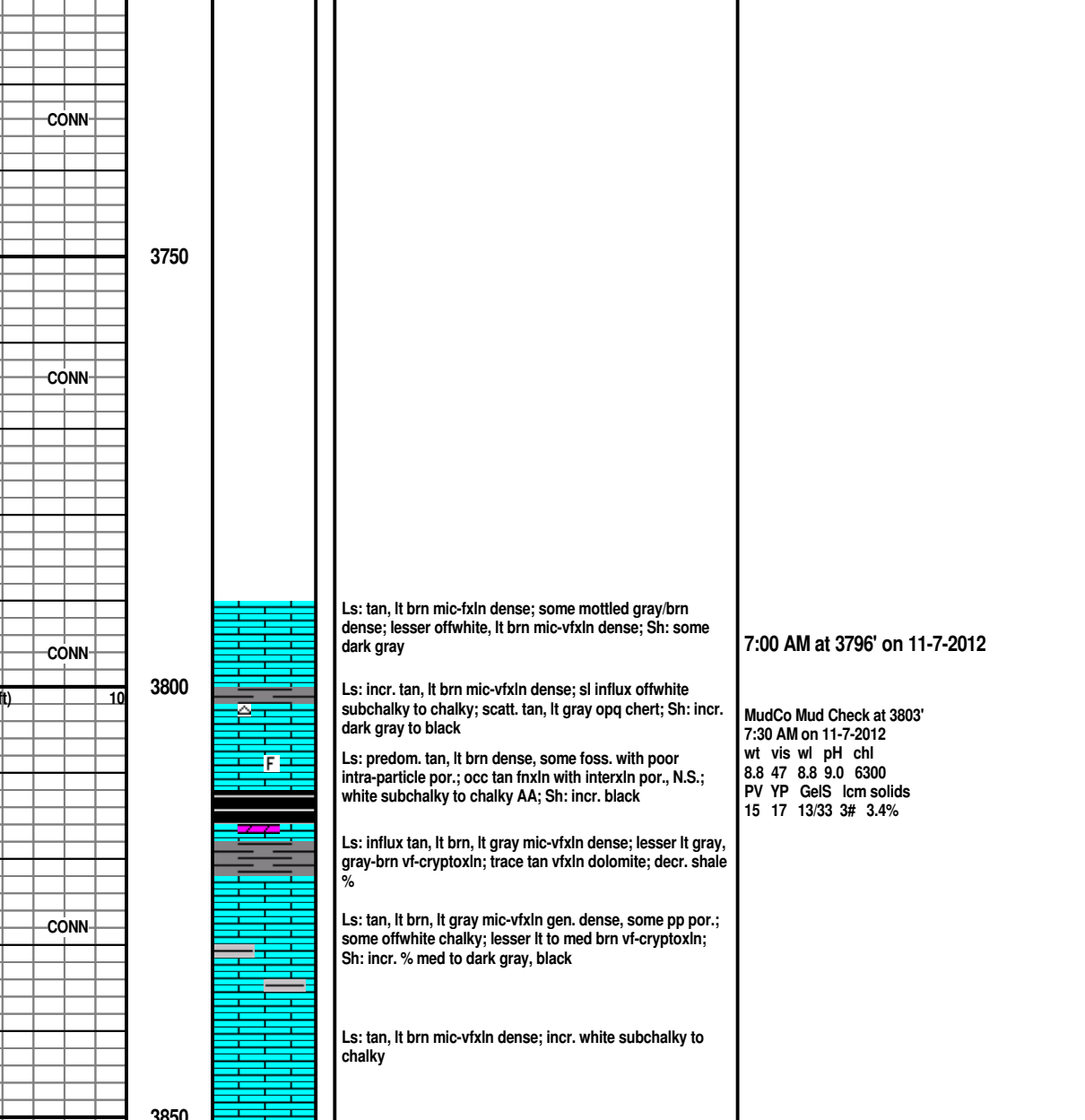
IPF: weak surface blow, died in 20 minutes
ISIP: no surface blow
FFP: no blow
FSIP: no return blow



DRILL STEM TESTS

DST No. 4 Fort Scott (Johnson)
Interval: 4564'-4595'
Times: 30-45-60-45
Recovery: 30' mud with oil spots
FP: 24-28/31-31 SIP: 637-66
HP: 2317-2164 BHT: 109 deg. F

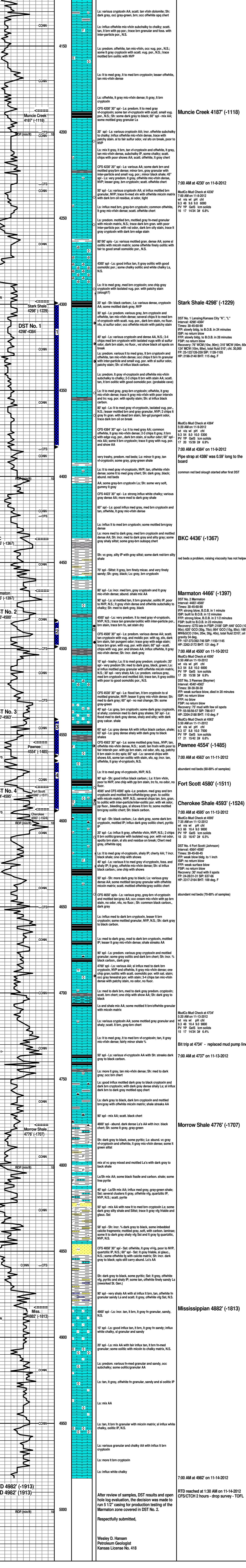
IPF: weak blow bldg. to 1 inch
ISIP: no return blow
FFP: weak surface blow
FSIP: no surface blow



ROCK TYPES		SHALE	
Carb sh	Dol	Shale	Shy dolo
Dtd	Gry sh	Siltstn	Shaly ls
Sandylms		Siltsh	

FOSSIL		MINERAL	
Algae	Bioctst	Anhy	Argrm
Amph	Brach	Arg	Bent
Bioct	Bryozoa	Bil	Brcfrag
Ceph	Coral		
Erin	Echin		
Fish	Foram		
Fossil	Gastro		
Oolite	Gastrolite		

OTHER SYMBOLS		OIL SHOWS	
Core	RH	Trace	Dead
Dst	Dst top/base	Spotted	Gas show



Wesley D. Hansen
Petroleum Geologist
Kansas License No. 418