



**TRILOBITE  
TESTING, INC**

# DRILL STEM TEST REPORT

Abercrombie Energy, LLC

**9-20s-34w Scott Co. KS**

10209 W Central STE 2  
Wichita KS, 67212

**Moore 1-9**

Job Ticket: 48920

**DST#: 1**

ATTN: Wes Hanson

Test Start: 2012.11.08 @ 22:40:00

## GENERAL INFORMATION:

Formation: **Kansas City " K & L**

Deviated: No Whipstock: ft (KB)

Time Tool Opened: 04:49:00

Time Test Ended: 10:56:30

Test Type: Conventional Bottom Hole (Initial)

Tester: Jace McKinney

Unit No: 46

**Interval: 4298.00 ft (KB) To 4384.00 ft (KB) (TVD)**

Reference Elevations: 3069.00 ft (KB)

Total Depth: 4384.00 ft (KB) (TVD)

3059.00 ft (CF)

Hole Diameter: 7.88 inches Hole Condition: Fair

KB to GR/CF: 10.00 ft

**Serial #: 8675**

**Inside**

Press @ Run Depth: 258.82 psig @ 4299.00 ft (KB)

Capacity: 8000.00 psig

Start Date: 2012.11.08

End Date:

2012.11.09

Last Calib.:

2012.11.09

Start Time: 22:40:15

End Time:

10:56:30

Time On Btm:

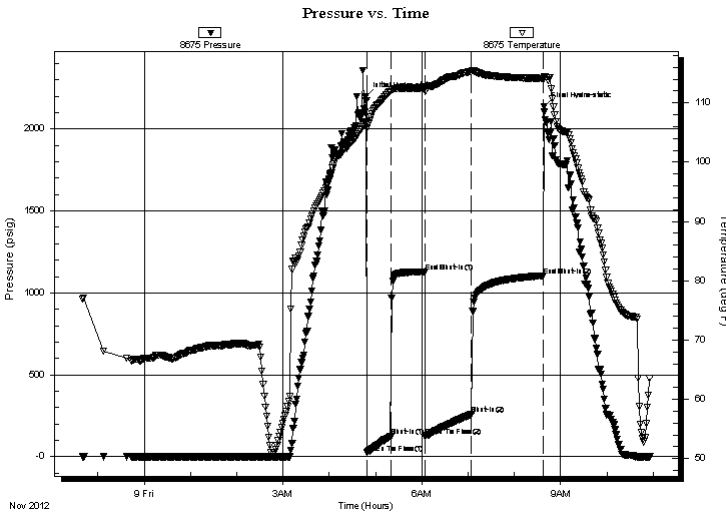
2012.11.09 @ 04:47:00

Time Off Btm:

2012.11.09 @ 08:38:15

**TEST COMMENT:** B.O.B. in 24 min.  
Bled off for 5 min. No return blow  
B.O.B. in 28 min.  
Bled off for 5 min. No return blow

## PRESSURE SUMMARY



Time (Min.)	Pressure (psig)	Temp (deg F)	Annotation
0	2198.45	106.65	Initial Hydro-static
2	24.54	105.71	Open To Flow (1)
33	122.44	111.96	Shut-In(1)
78	1128.30	112.50	End Shut-In(1)
78	125.81	112.01	Open To Flow (2)
138	258.82	115.31	Shut-In(2)
231	1104.51	114.14	End Shut-In(2)
232	2138.39	114.12	Final Hydro-static

## Recovery

Length (ft)	Description	Volume (bbl)
76.00	w cm 10%W 90%m	1.07
310.00	mcw 40%M 60%w	4.35
124.00	mcw 10%M 90%w	1.74

## Gas Rates

Choke (inches)	Pressure (psig)	Gas Rate (Mcf/d)



**TRILOBITE  
TESTING, INC**

# DRILL STEM TEST REPORT

**FLUID SUMMARY**

Abercrombie Energy, LLC

**9-20s-34w Scott Co. KS**

10209 W Central STE 2  
Wichita KS, 67212

**Moore 1-9**

Job Ticket: 48920

**DST#: 1**

ATTN: Wes Hanson

Test Start: 2012.11.08 @ 22:40:00

## Mud and Cushion Information

Mud Type: Gel Chem

Cushion Type:

Oil API:

deg API

Mud Weight: 9.00 lb/gal

Cushion Length:

ft

Water Salinity:

30000 ppm

Viscosity: 48.00 sec/qt

Cushion Volume:

bbbl

Water Loss: 9.59 in<sup>3</sup>

Gas Cushion Type:

Resistivity: ohm.m

Gas Cushion Pressure:

psig

Salinity: 6000.00 ppm

Filter Cake: 1.00 inches

## Recovery Information

Recovery Table

Length ft	Description	Volume bbbl
76.00	w cm 10%W 90%m	1.066
310.00	mcw 40%M 60%w	4.348
124.00	mcw 10%M 90%w	1.739

Total Length: 510.00 ft      Total Volume: 7.153 bbl

Num Fluid Samples: 0

Num Gas Bombs: 0

Serial #:

Laboratory Name:

Laboratory Location:

Recovery Comments: rw: .30 @ 60 F = 30,000

