



**TRILOBITE  
TESTING, INC.**

# DRILL STEM TEST REPORT

Abercrombie Energy, LLC

**9-20s-34w Scott Co. KS**

10209 W Central STE 2  
Wichita KS, 67212

**Moore 1-9**

Job Ticket: 48923

**DST#: 4**

ATTN: Wes Hanson

Test Start: 2012.11.11 @ 20:10:00

## GENERAL INFORMATION:

Formation: **Fort Scott (Johnson)**

Deviated: No Whipstock: ft (KB)

Time Tool Opened: 22:16:30

Time Test Ended: 03:29:00

Test Type: Conventional Bottom Hole (Reset)

Tester: Jace McKinney

Unit No: 46

**Interval: 4564.00 ft (KB) To 4595.00 ft (KB) (TVD)**

Reference Elevations: 3069.00 ft (KB)

Total Depth: 4595.00 ft (KB) (TVD)

3059.00 ft (CF)

Hole Diameter: 7.88 inches Hole Condition: Fair

KB to GR/CF: 10.00 ft

**Serial #: 8675**

**Inside**

Press @ Run Depth: 31.49 psig @ 4565.00 ft (KB)

Capacity: 8000.00 psig

Start Date: 2012.11.11

End Date:

2012.11.12

Last Calib.:

2012.11.12

Start Time: 20:10:15

End Time:

03:29:00

Time On Btm:

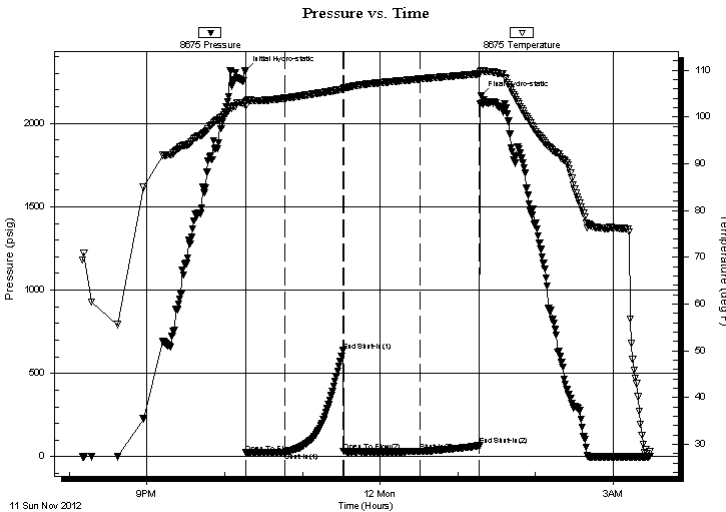
2012.11.11 @ 22:16:15

Time Off Btm:

2012.11.12 @ 01:18:15

**TEST COMMENT:** Built to 1" blow  
No return blow  
Weak surface blow  
No return blow

## PRESSURE SUMMARY



Time (Min.)	Pressure (psig)	Temp (deg F)	Annotation
0	2316.51	103.31	Initial Hydro-static
1	23.67	102.46	Open To Flow (1)
30	28.49	103.98	Shut-In(1)
75	636.63	105.92	End Shut-In(1)
76	30.83	105.95	Open To Flow (2)
135	31.49	108.11	Shut-In(2)
181	66.03	109.20	End Shut-In(2)
182	2164.44	109.95	Final Hydro-static

## Recovery

Length (ft)	Description	Volume (bbl)
30.00	100% Mud with oil spots	0.42

## Gas Rates

	Choke (inches)	Pressure (psig)	Gas Rate (Mcf/d)

\* Recovery from multiple tests



**TRILOBITE  
TESTING, INC.**

# DRILL STEM TEST REPORT

**FLUID SUMMARY**

Abercrombie Energy, LLC

**9-20s-34w Scott Co. KS**

10209 W Central STE 2  
Wichita KS, 67212

**Moore 1-9**

Job Ticket: 48923

**DST#: 4**

ATTN: Wes Hanson

Test Start: 2012.11.11 @ 20:10:00

## Mud and Cushion Information

Mud Type: Gel Chem

Cushion Type:

Oil API:

deg API

Mud Weight: 9.00 lb/gal

Cushion Length: ft

Water Salinity: ppm

Viscosity: 57.00 sec/qt

Cushion Volume: bbl

Water Loss: 8.79 in<sup>3</sup>

Gas Cushion Type:

Resistivity: ohm.m

Gas Cushion Pressure: psig

Salinity: 7500.00 ppm

Filter Cake: 1.00 inches

## Recovery Information

Recovery Table

Length ft	Description	Volume bbl
30.00	100% Mud with oil spots	0.421

Total Length: 30.00 ft      Total Volume: 0.421 bbl

Num Fluid Samples: 0

Num Gas Bombs: 0

Serial #:

Laboratory Name:

Laboratory Location:

Recovery Comments:

### Pressure vs. Time

