

GEOLOGIST'S REPORT

DRILLING TIME AND SAMPLE LOG

BACH OIL PRODUCTION

WELL: KRAFFT #1

LOC.: 1020' FSL & 1000' FWL
 SEC. 11-1-19W
 PHILLIPS COUNTY, KANSAS
 API: 15-147-20690-00-00

DRILLING CONTR.: MURFIN RIG #8
 SPUD: 09-10-12 COMP: 09-15-12
 MUD UP: 2800' TYPE MUD: CHEM.
 DRILL TIME: 3000 to' RTD
 RTD: 3618' LTD: 3618'
 SAMPLES SAVED: 3050'-RTD
 GEOLOGIST: ROBERT J. PETERSEN

ELEVATION

KB: 2123
 GL: 2118
 LOG MEASURED
 FROM: KB

SURFACE CASING

20# 8 5/8 "
 Casing set @ 234
 w/170 SX

PRODUCTION CASING

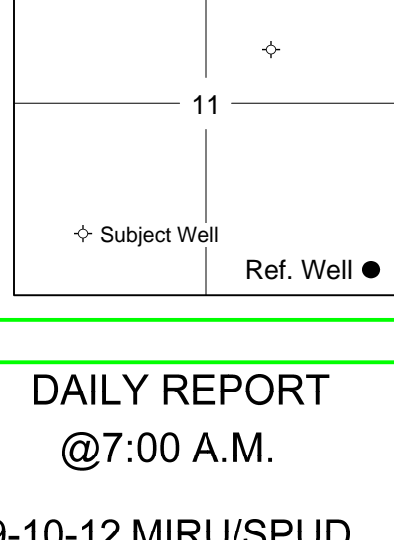
D&A

WELL LOG SURVEYS

DIL/CDL/MICRO

ELECTRIC LOG TOPS

FORMATION	DEPTH	DATUM	POS.
Stone Corral	1762	+361	-8
Base Stone Corral	1787	+336	-12
Topeka	3117	-994	-14
Heebner	3322	-1199	-16
Toronto	3353	-1230	-19
Lansing	3367	-1244	-15
Muncie Creek	3477	-1354	-15
Stark	3545	-1422	-17
BKC	3585	-1462	-13
RTD	3618	-1495	N/A



REFERENCE WELL:

Bach Oil Prod.
 Jessup Unit #1
 300' FSL & 790' FEL
 11-1-19W

REMARKS AND RECOMMENDATIONS

This well was plugged due to negative drill stem test results.

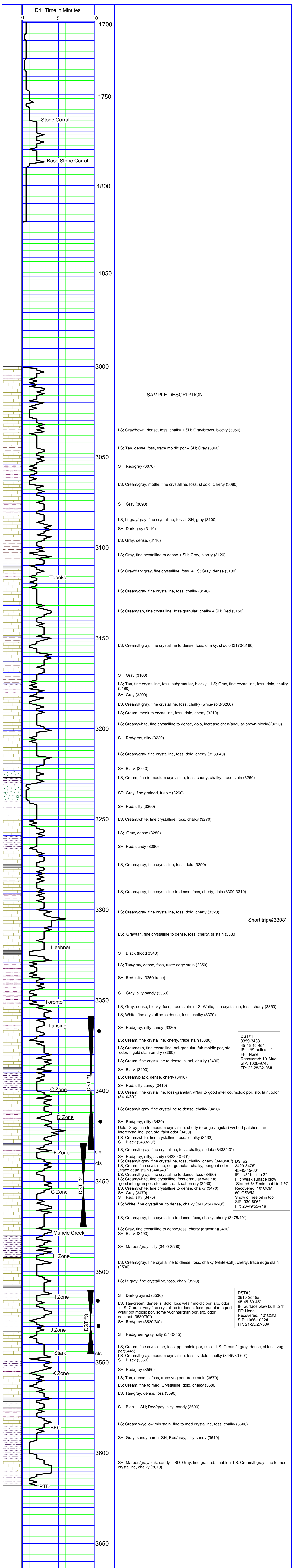
Respcetfully submitted,

Robert J Petersen
 Robert J Petersen

DAILY REPORT

@7:00 A.M.

09-10-12 MIRU/SPUD
 09-11-12 695' Drilling
 09-12-12 2400' Drilling
 09-13-12 3210' Short trip
 09-14-12 3433' DST #1
 09-15-12 3545' DST #3
 09-16-12 RTD
 Well logged/plugged



DST#1
 3510-3545#
 45-45-45"
 IF: 1/8" built to 1"
 FF: None
 Recovered: 10' Mud
 SIP: 1006-974#
 FP: 23-28/32-36#

DST#2
 3429-3475
 45-45-60"
 IF: 1/8" built to 3"
 FF: Weak surface blow
 Started @ 7 min, built to 1 1/4"
 Recovered: 10' OCM
 60' OSWM
 Show of free oil in tool
 SIP: 930-896#
 FP: 23-49/55-71#

DST#3
 3510-3545#
 45-45-30-45"
 IF: Surface blow built to 1"
 FF: None
 Recovered: 10' OSM
 SIP: 1086-1032#
 FP: 21-25/27-30#