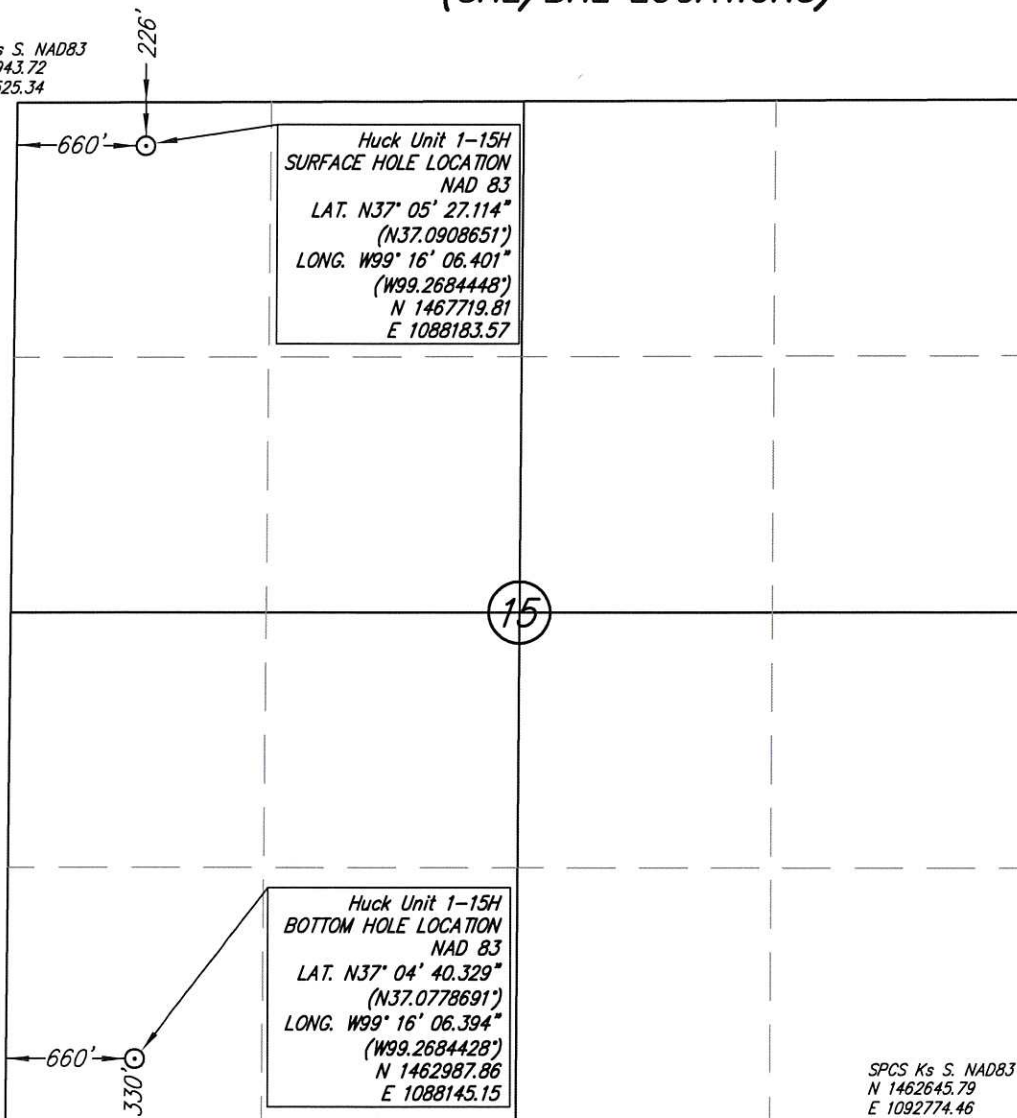


WELL STAKE-OUT SURVEY (SHL/BHL LOCATIONS)

SPCS Ks S. NAD83
N 1467943.72
E 1087525.34

SPCS Ks S. NAD83
N 1467959.76
E 1092782.80



Huck Unit 1-15H
SURFACE HOLE LOCATION
NAD 83
LAT. N37° 05' 27.114"
(N37.0908651)
LONG. W99° 16' 06.401"
(W99.2684448)
N 1467719.81
E 1088183.57

Huck Unit 1-15H
BOTTOM HOLE LOCATION
NAD 83
LAT. N37° 04' 40.329"
(N37.0778691)
LONG. W99° 16' 06.394"
(W99.2684428)
N 1462987.86
E 1088145.15

SPCS Ks S. NAD83
N 1462645.79
E 1092774.46



Revised 9/12/2012

SPCS Ks S. NAD83
N 1462659.59
E 1087482.47

Lease Name: Huck Unit
Well No. 1-15H
Surface Hole Elevation at Stake: 1831.10 NAVD88
Well Location Co./State: Comanche County, Kansas
Well Location Section: 15-T34S-R18W

Alternate Datums:

	Horz. Datum NAD 27
Huck Unit #1-15H Surface Hole	Lat. N37°05'27.018" Long. W99°16'05.001" N37.0908384" W99°2680559"
Huck Unit #1-15H Bottom Hole	Lat. N37°04'40.232" Long. W99°16'04.994" N37.0778422" W99.2680540"

SURVEY DATUMS (shown on drawing)
Horizontal Datum NAD83 (CORS96)
Vertical Datum NAVD88 (GEOID09)
Kansas SPCS South Zone (US Feet)

State of Kansas)
) SS
Sedgwick County)

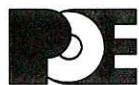
This is to certify that this map or plat and the survey on which it is based was made by me or under my direct supervision and that, to the best of my knowledge and belief, this is a true and correct exhibit of said survey. The wells shown hereon were staked August 27, 2012 at the coordinate location noted.



Brian N. Savoy, RLS #817
This survey is valid only if print bears Surveyor's seal, signed in blue ink.



Savoy Company, P.A.
Land Surveyors
433 S. Hydraulic, Suite 104, Wichita, KS 67202
www.savoyco.com
PH (316) 265-0005
FAX (316) 265-0275



POE & ASSOCIATES, INC.
CONSULTING ENGINEERS
5940 E. Central, Suite 200 Wichita, KS 67208-4242
Phone 316/685-4114 FAX 316/685-4444