

GEOLOGIST'S REPORT

DRILLING TIME AND SAMPLE LOG

COMPANY Mull Drilling Company, Inc. LEASE Schadel #1-18 ELEVATIONS 2267' FIELD Wildcat LOCATION 890' ECL 1100' FWL SEC 18 TWP 18 S R. 22 W COUNTY Ness STATE Kansas

REMARKS The Mull Drilling Company, Inc. Schadel #1-18, ran structurally high to the offset reference well to the southwest, 2 1/2 #1-18. However, this well was low to the other reference wells to the north, Mull Rolling, Frank #1-18 and the Stewart-Frank #1-17. The Cherokee sand did not develop in this well and the Mississippi dolomite/chert did not contain any sample shows.

After examination and evaluation of the samples and the E-log, it was decided to plug and abandon this well.

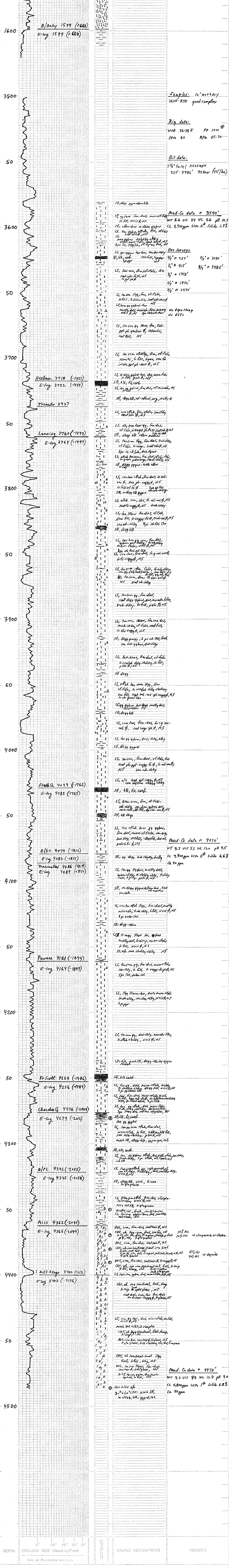
Phil Askey, P.G.

API # 15-135-25413

LEGEND



SCALE 1" = 100'



COMPANY Mull Drilling Company, Inc. LEASE Schadel #1-18 ELEVATION 2267' KB LOCATION 890' ECL 1100' FWL SEC 18 TWP 18 S R. 22 W COUNTY Ness STATE Kansas