

1 1/4" Pipe, 0.5'
Below Ground
NAD 27 Kansas South
N: 295676.03
E: 2264795.37

T30S, R2W, 6th P.M.

SGOMI

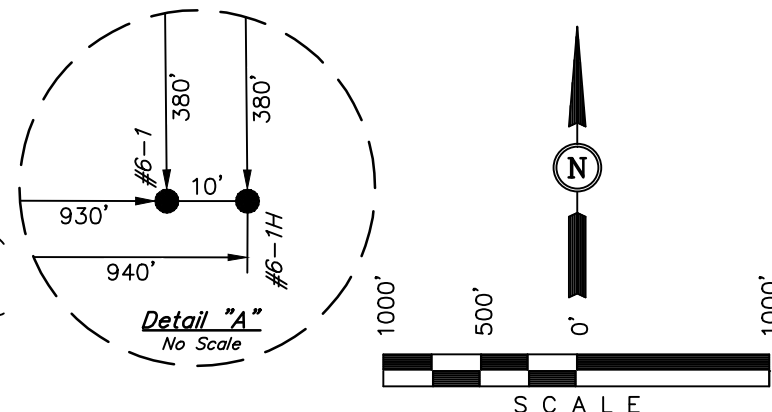
Well location, PAULY 3002 #6-1H, located as shown in Lot 6 of Section 6, T30S, R2W, 6th P.M., Sumner County, Kansas.

BASIS OF ELEVATION

BLACK ELEVATION LOCATED AT THE NORTHEAST CORNER OF SECTION 25, T31S, R4W, 6th P.M. TAKEN FROM THE MILAN, QUADRANGLE, KANSAS, SUMNER COUNTY, 7.5 MINUTE QUAD (TOPOGRAPHIC MAP) PUBLISHED BY THE UNITED STATES DEPARTMENT OF THE INTERIOR, GEOLOGICAL SURVEY. SAID ELEVATION IS MARKED AS BEING 1333 FEET.

BASIS OF BEARINGS

BASIS OF BEARINGS IS A G.P.S. OBSERVATION.



CERTIFICATE

THIS IS TO CERTIFY THAT THE ABOVE PLAT WAS PREPARED FROM FIELD NOTES OF ACTUAL SURVEYS MADE BY ME OR UNDER MY SUPERVISION AND THAT THE SAME ARE TRUE AND CORRECT TO THE BEST OF MY KNOWLEDGE AND BELIEF.

Robert J. Smith
REGISTERED LAND SURVEYOR
REGISTRATION NO. 1451
STATE OF KANSAS 41-20-12

LEGEND:

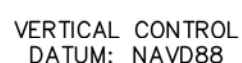
- = 90° SYMBOL
- = PROPOSED WELL HEAD.
- ▲ = SECTION CORNERS LOCATED.

NAD 83 (#6-1H AS-DRILLED BOTTOM HOLE)	NAD 83 (#6-1H SURFACE LOCATION)
LATITUDE = 37°27'38.80" (37.460778)	LATITUDE = 37°28'26.93" (37.474147)
LONGITUDE = 97°35'11.86" (97.586628)	LONGITUDE = 97°35'04.65" (97.584625)
NAD 27 (#6-1H AS-DRILLED BOTTOM HOLE)	NAD 27 (#6-1H SURFACE LOCATION)
LATITUDE = 37°27'38.73" (37.460758)	LATITUDE = 37°28'26.86" (37.474128)
LONGITUDE = 97°35'10.68" (97.586300)	LONGITUDE = 97°35'03.48" (97.584300)
STATE PLANE NAD 27 (KANSAS SOUTH)	STATE PLANE NAD 27 (KANSAS SOUTH)
N: 290439.89 E: 2265205.00	N: 295313.19 E: 2265737.85

NOTE:
AS-DRILLED WELL BORE PATH
AND INFORMATION
PROVIDED BY SGOMI.

UINTAH ENGINEERING & LAND SURVEYING
85 SOUTH 200 EAST - VERNAL, UTAH 84078
(435) 789-1017

SCALE 1" = 1000'	DATE SURVEYED: 08-24-12	DATE DRAWN: 11-15-12
PARTY J.P. B.L. C.A.G.	REFERENCES G.L.O. PLAT	
WEATHER HOT	FILE SGOMI	



SCALE: 1" = 100'
DATE: 09-06-12
DRAWN BY: C.A.G.
VERSION: 1.0
REVISED:
REVISED BY: