

WELL LOCATION PLAT

T19S, R2E, 6th P.M.

Z.O.C.

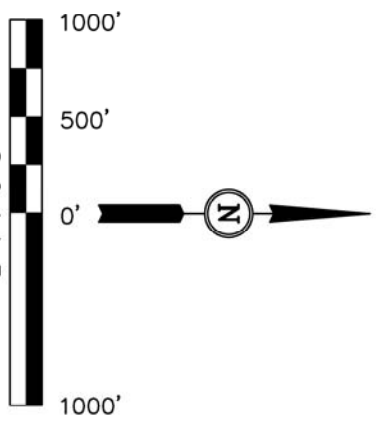
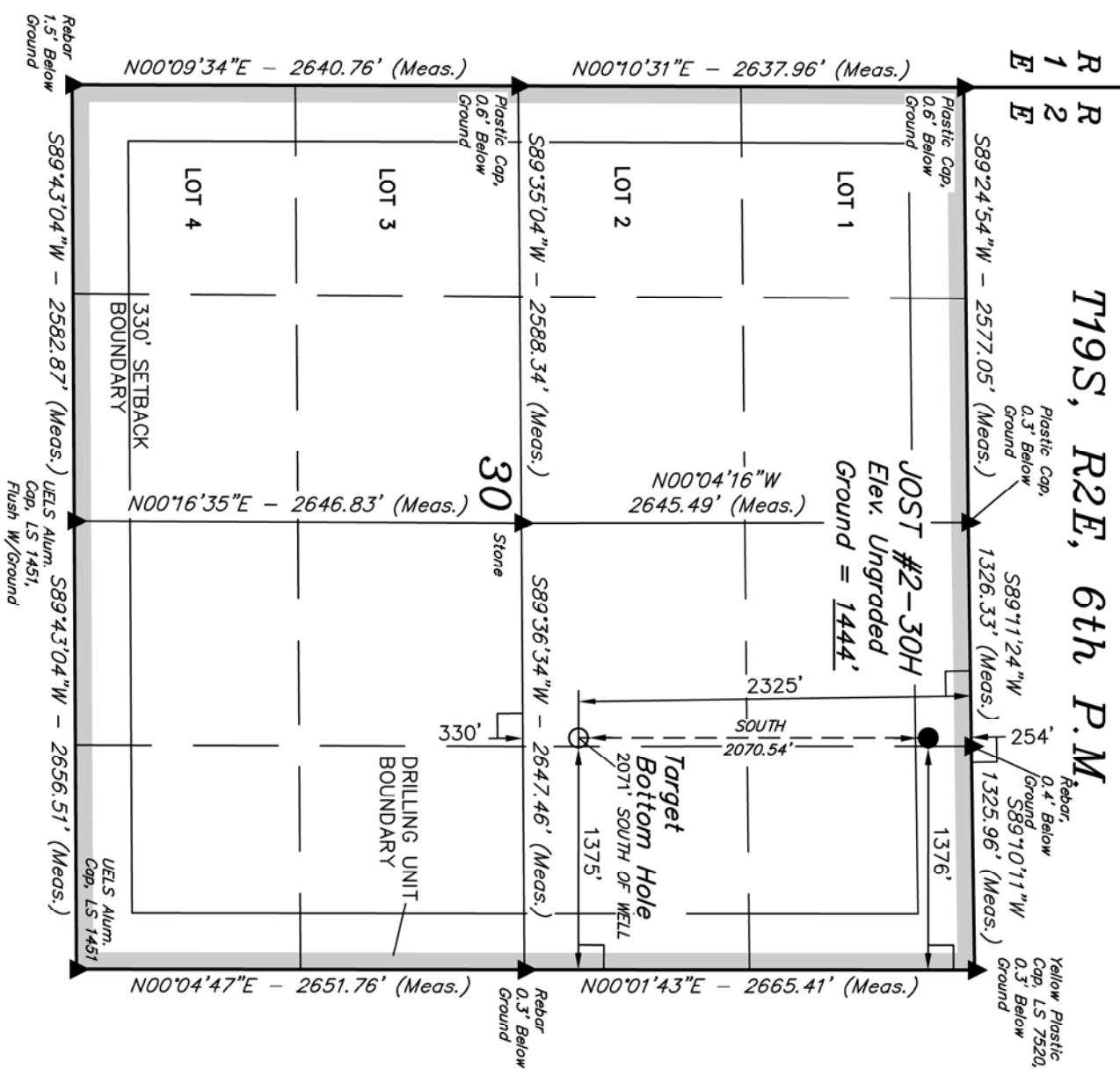
Well location, JOST #2-30H, located as shown in the NW 1/4 NE 1/4 of Section 30, T19S, R2E, 6th P.M., Marion County, Kansas.

BASIS OF ELEVATION

SPOT ELEVATION LOCATED AT THE SE CORNER OF SECTION 33, T8S, R4E, 6th P.M. TAKEN FROM THE LINCOLNVILLE, QUADRANGLE, KANSAS, MARION COUNTY, 7.5 MINUTE QUAD (TOPOGRAPHIC MAP) PUBLISHED BY THE UNITED STATES DEPARTMENT OF THE INTERIOR, GEOLOGICAL SURVEY. SAID ELEVATION IS MARKED AS BEING 1403 FEET.

BASIS OF BEARINGS

BASIS OF BEARINGS IS A G.P.S. OBSERVATION.



CERTIFICATE

THIS IS TO CERTIFY THAT THE ABOVE PLAT WAS PREPARED FROM FIELD NOTES OF ACTUAL SURVEYS MADE BY ME OR UNDER MY SUPERVISION AND THAT THE SAME ARE TRUE AND CORRECT TO THE BEST OF MY KNOWLEDGE AND BELIEF.

UINTAH ENGINEERING & LAND SURVEYING
85 SOUTH 200 EAST - VERNAL, UTAH 84078
 (435) 789-1017

SCALE 1" = 1000'	DATE SURVEYED: 09-04-12	DATE DRAWN: 09-10-12
---------------------	----------------------------	-------------------------

PARTY J.P. B.L. K.O.	REFERENCES G.I.O. PLAT
WEATHER HOT	FILE Z.O.C.

- LEGEND:**
- └─ = 90° SYMBOL
 - = PROPOSED WELL HEAD.
 - ▲ = SECTION CORNERS LOCATED

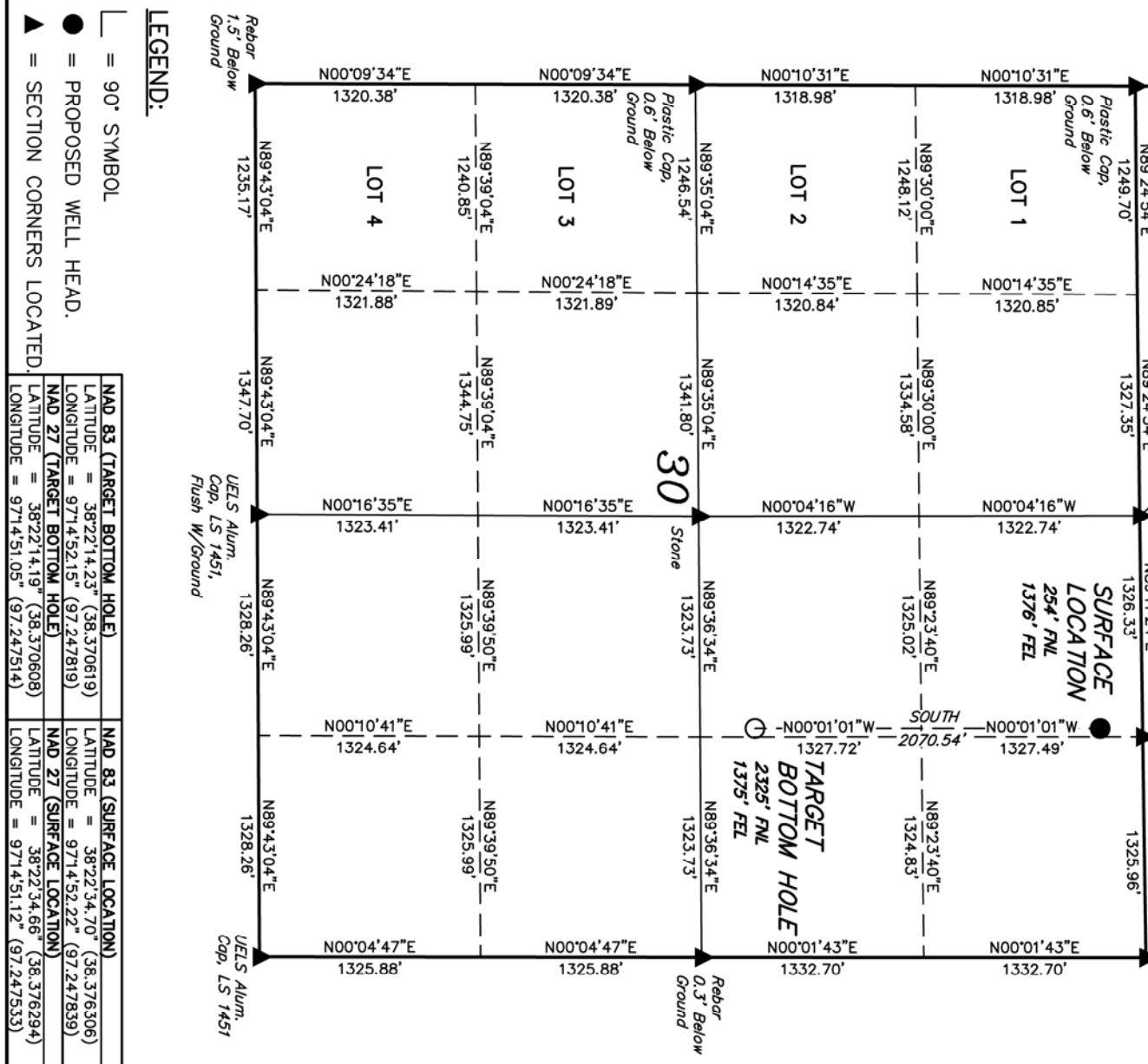
NAD 83 (TARGET BOTTOM HOLE)	NAD 83 (SURFACE LOCATION)
LATITUDE = 38°22'14.23" (38.370619)	LATITUDE = 38°22'34.70" (38.376306)
LONGITUDE = 97°14'52.15" (97.247819)	LONGITUDE = 97°14'52.22" (97.247839)
NAD 27 (TARGET BOTTOM HOLE)	NAD 27 (SURFACE LOCATION)
LATITUDE = 38°22'14.19" (38.370608)	LATITUDE = 38°22'34.66" (38.376294)
LONGITUDE = 97°14'51.05" (97.247514)	LONGITUDE = 97°14'51.12" (97.247533)

SECTION BREAKDOWN

T19S, R2E, 6th P.M.

R
1
E
R
2
E

Plastic Cap, 0.3' Below Ground
Rebar, 0.4' Below Ground
Yellow Plastic Cap, LS 7520, 0.3' Below Ground



Well location, JOST #2-30H, located as shown in the NW 1/4 NE 1/4 of Section 30, T19S, R2E, 6th P.M., Marion County, Kansas.

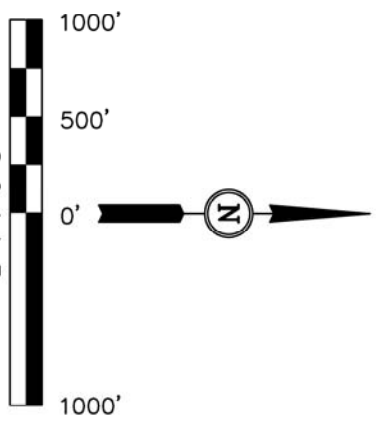
BASIS OF ELEVATION

SPOT ELEVATION LOCATED AT THE SE CORNER OF SECTION 33, T8S, R4E, 6th P.M. TAKEN FROM THE LINCOLNVILLE, QUADRANGLE, KANSAS, MARION COUNTY, 7.5 MINUTE QUAD (TOPOGRAPHIC MAP) PUBLISHED BY THE UNITED STATES DEPARTMENT OF THE INTERIOR, GEOLOGICAL SURVEY. SAID ELEVATION IS MARKED AS BEING 1403 FEET.

BASIS OF BEARINGS

BASIS OF BEARINGS IS A G.P.S. OBSERVATION.

Z.O.C.



CERTIFICATE

THIS IS TO CERTIFY THAT THE ABOVE PLAT WAS PREPARED FROM FIELD NOTES OF ACTUAL SURVEYS MADE BY ME OR UNDER MY SUPERVISION AND THAT THE SAME ARE TRUE AND CORRECT TO THE BEST OF MY KNOWLEDGE AND BELIEF.

UINTAH ENGINEERING & LAND SURVEYING
85 SOUTH 200 EAST - VERNAL, UTAH 84078
 (435) 789-1017

SCALE	1" = 1000'	DATE SURVEYED:	09-04-12	DATE DRAWN:	09-10-12
-------	------------	----------------	----------	-------------	----------

PARTY	J.P. B.L. K.O.	REFERENCES	G.I.O. PLAT
WEATHER	HOT	FILE	Z.O.C.

- LEGEND:**
- = 90° SYMBOL
 - = PROPOSED WELL HEAD.
 - ▲ = SECTION CORNERS LOCATED

NAD 83 (TARGET BOTTOM HOLE)	
LATITUDE = 38°22'14.23" (38.370619)	LATITUDE = 38°22'34.70" (38.376306)
LONGITUDE = 97°14'52.15" (97.247819)	LONGITUDE = 97°14'52.22" (97.247839)
NAD 27 (TARGET BOTTOM HOLE)	
LATITUDE = 38°22'14.19" (38.370608)	LATITUDE = 38°22'34.66" (38.376294)
LONGITUDE = 97°14'51.05" (97.247514)	LONGITUDE = 97°14'51.12" (97.247533)

WELL LOCATION PLAT

T19S, R2E, 6th P.M.

Z.O.C.

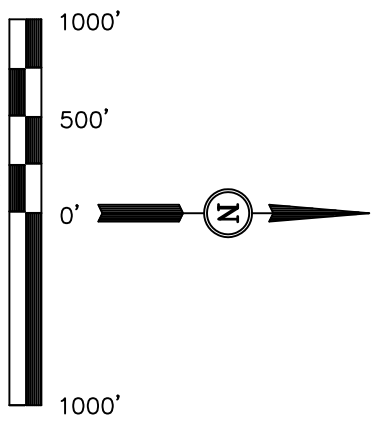
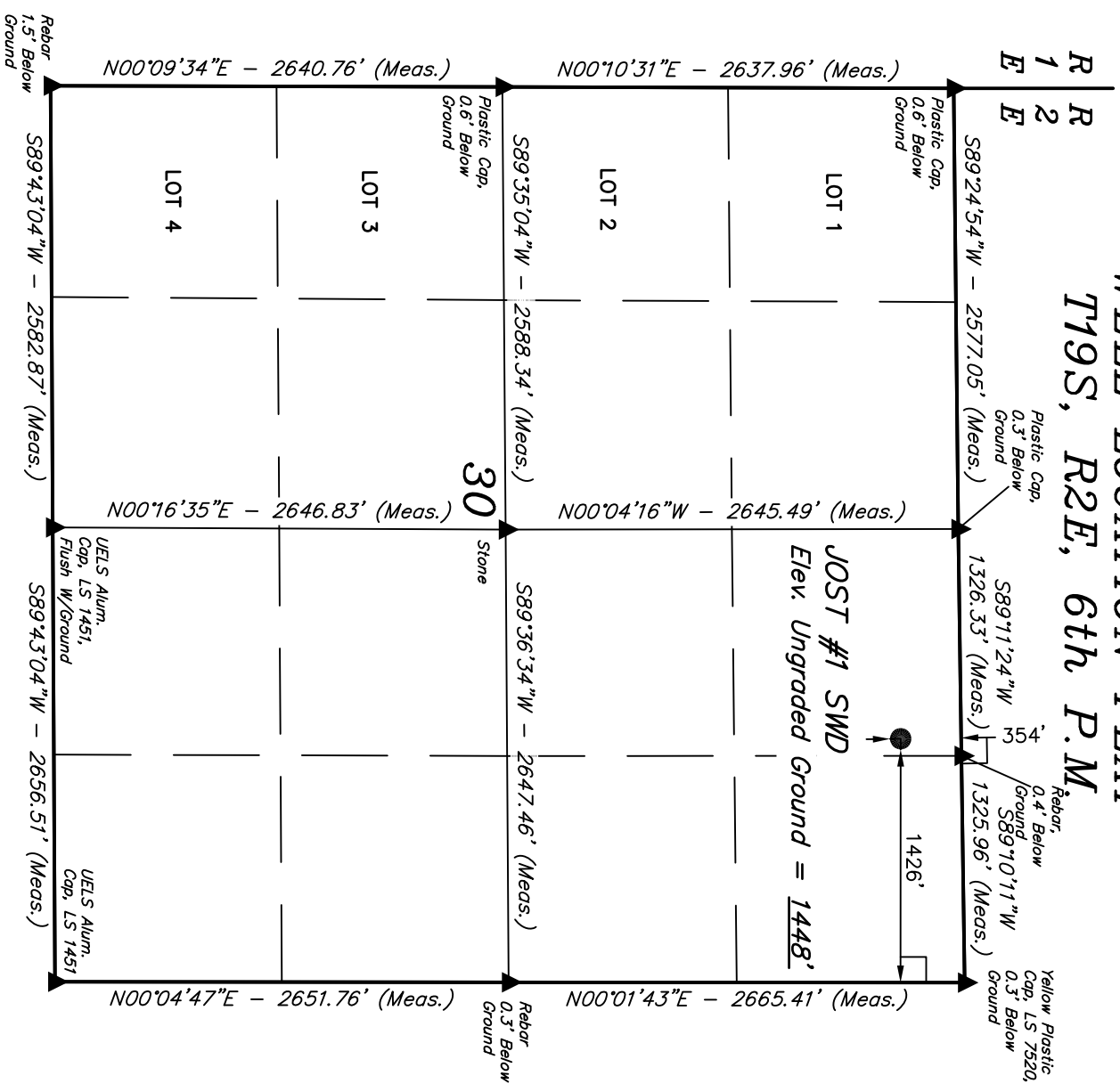
Well location, JOST #1 SWD, located as shown in the NW 1/4 NE 1/4 of Section 30, T19S, R2E, 6th P.M., Marion County, Kansas.

BASIS OF ELEVATION

SPOT ELEVATION LOCATED AT THE SE CORNER OF SECTION 33, T18S, R4E, 6th P.M. TAKEN FROM THE LINCOLNVILLE, QUADRANGLE, KANSAS, MARION COUNTY, 7.5 MINUTE QUAD (TOPOGRAPHIC MAP) PUBLISHED BY THE UNITED STATES DEPARTMENT OF THE INTERIOR, GEOLOGICAL SURVEY. SAID ELEVATION IS MARKED AS BEING 1403 FEET.

BASIS OF BEARINGS

BASIS OF BEARINGS IS A G.P.S. OBSERVATION.



CERTIFICATE

THIS IS TO CERTIFY THAT THE ABOVE PLAT WAS PREPARED FROM FIELD NOTES OF ACTUAL SURVEYS MADE BY ME OR UNDER MY SUPERVISION AND THAT THE SAME ARE TRUE AND CORRECT TO THE BEST OF MY KNOWLEDGE AND BELIEF.

UINTAH ENGINEERING & LAND SURVEYING
85 SOUTH 200 EAST - VERNAL, UTAH 84078
 (435) 789-1017

SCALE 1" = 1000'	DATE SURVEYED: 09-04-12	DATE DRAWN: 09-07-12
---------------------	----------------------------	-------------------------

PARTY J.P. B.L. K.O.	REFERENCES G.I.O. PLAT
-------------------------	---------------------------

WEATHER HOT	FILE Z.O.C.
----------------	----------------

LEGEND:

- └ = 90° SYMBOL
- = PROPOSED WELL HEAD.
- ▲ = SECTION CORNERS LOCATED.

NAD 83 (SURFACE LOCATION) LATITUDE = 38°22'33.71" (38.376031) LONGITUDE = 97°14'52.84" (97.248011)	NAD 27 (SURFACE LOCATION) LATITUDE = 38°22'33.67" (38.376019) LONGITUDE = 97°14'51.74" (97.247706)
---	---

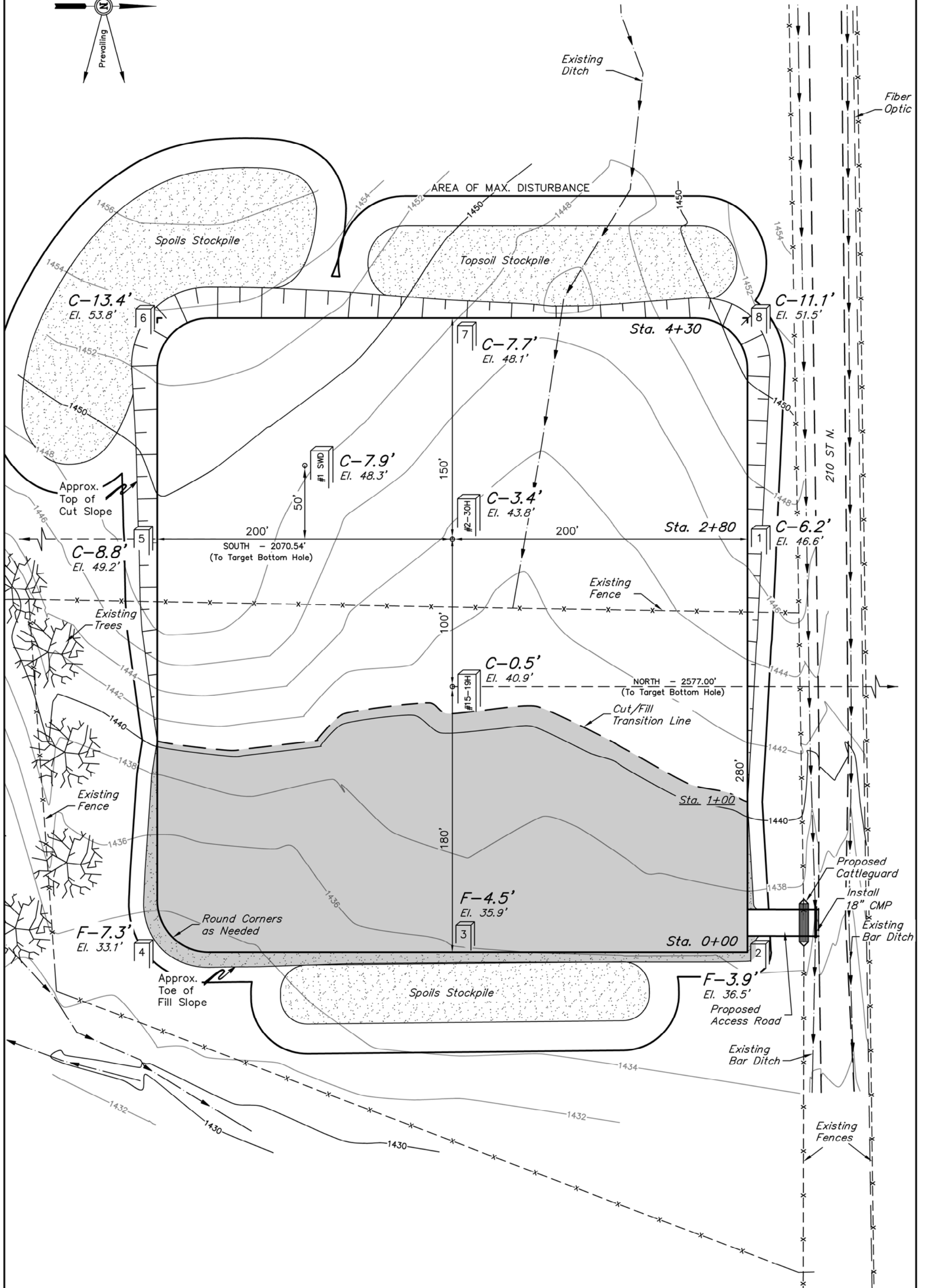
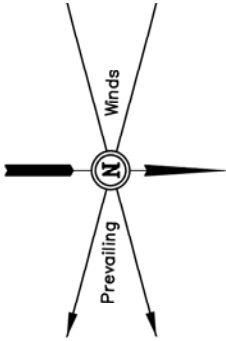
Z.O.C.

PAD LAYOUT FOR

JUST #2-30H, JUST #1 SWD & BARTEL #15-19H
SECTION 30, T19S, R2E, 6th P.M.
N 1/2 NE 1/4

FIGURE #1

SCALE: 1" = 60'
DATE: 09-07-12
DRAWN BY: K.O.



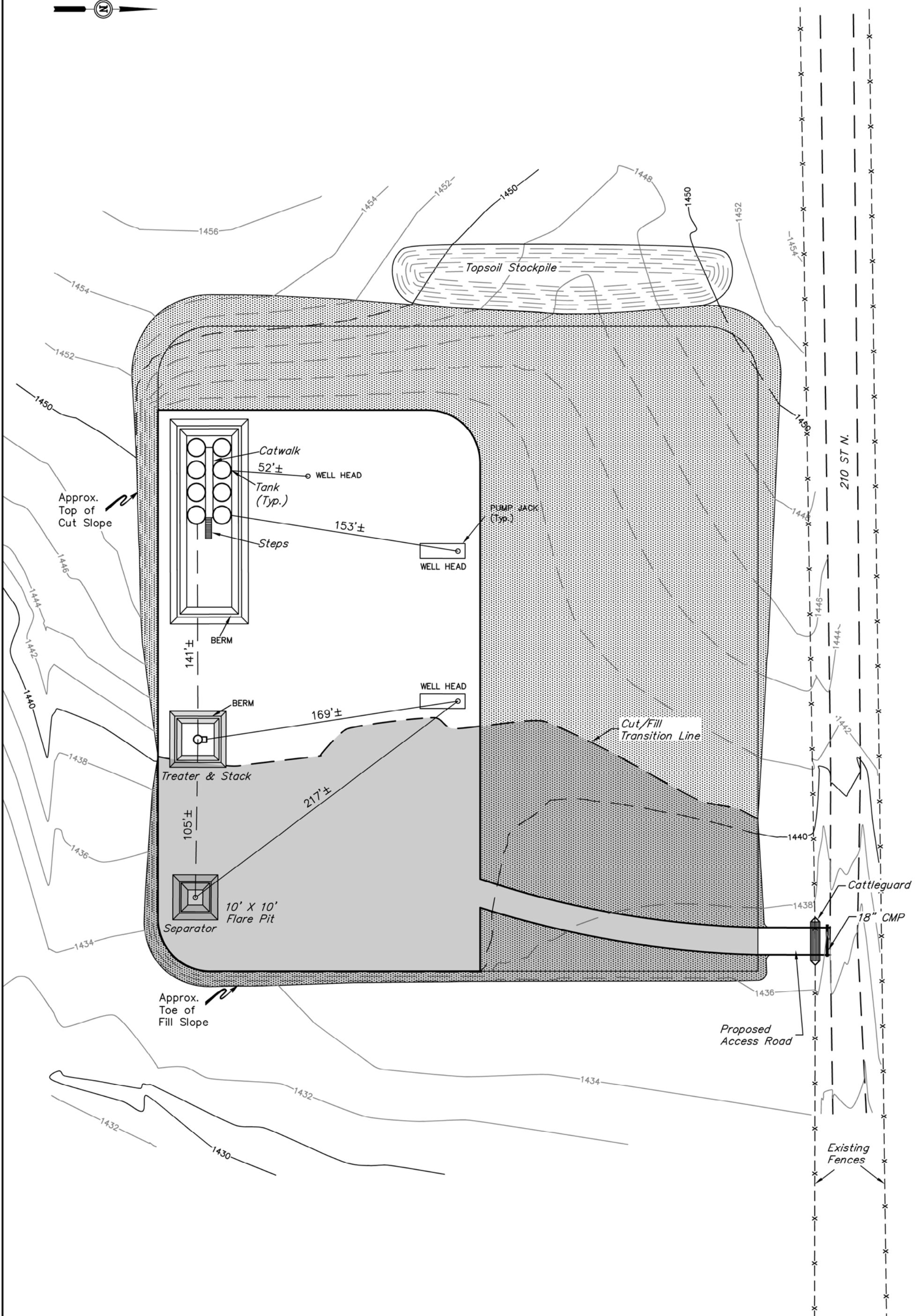
Elev. Ungraded Ground At JUST #2-30H Loc. Stake = 1443.8'
FINISHED GRADE ELEV. AT JUST #2-30H LOC. STAKE = 1440.4'

Z.O.C.

PRODUCTION FACILITY LAYOUT FOR
JOST #2-30H, JOST #1 SWD & BARTEL #15-19H
SECTION 30, T19S, R2E, 6th P.M.
N 1/2 NE 1/4

FIGURE #4

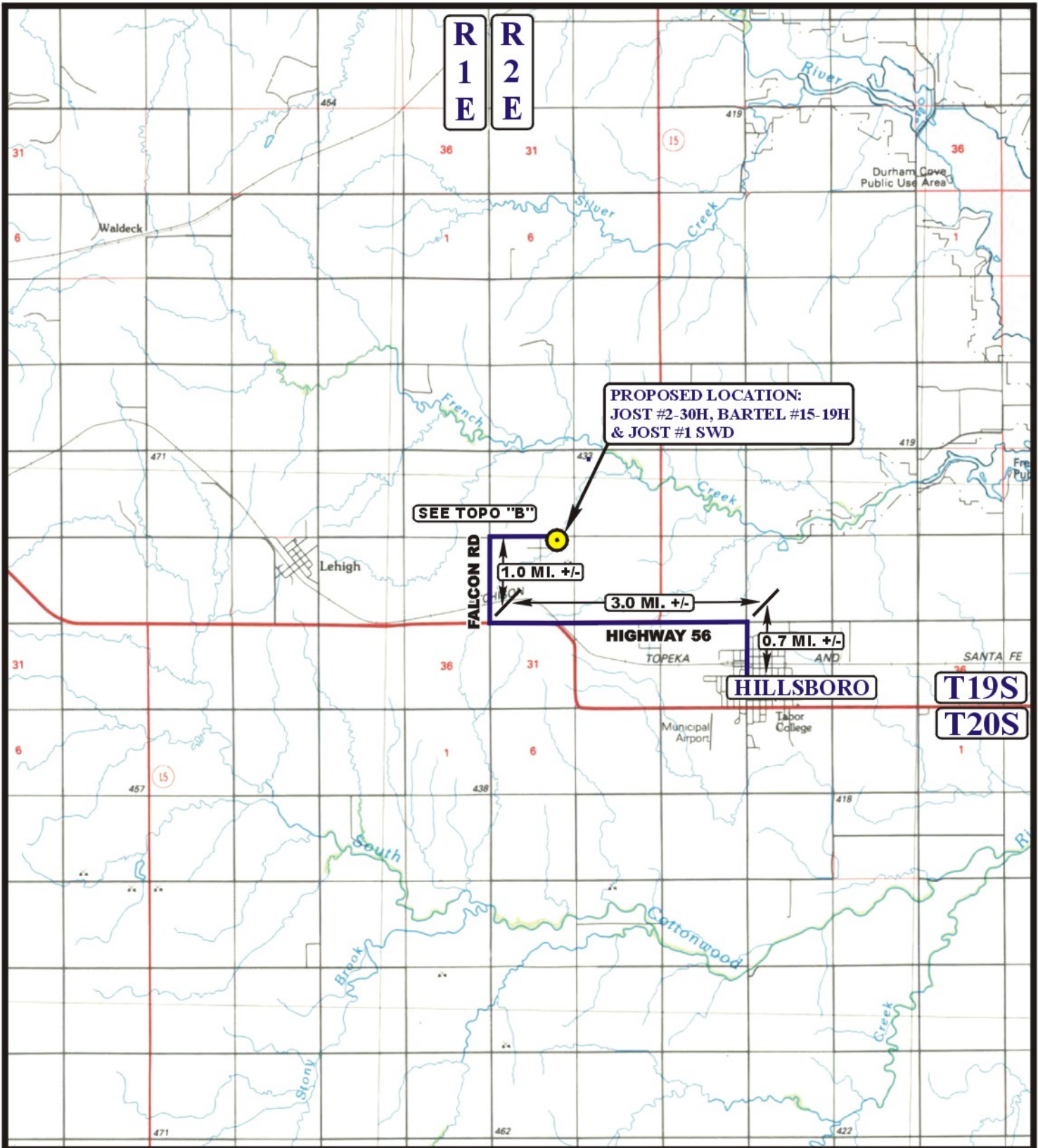
SCALE: 1" = 60'
DATE: 09-07-12
DRAWN BY: K.O.



INTERIM RECLAMATION

APPROXIMATE ACREAGES
UN-RECLAIMED = ± 1.833 ACRES

UINTAH ENGINEERING & LAND SURVEYING
85 So. 200 East * Vernal, Utah 84078 * (435) 789-1017



LEGEND:

 PROPOSED LOCATION



Z.O.C.

JOST #2-30H, BARTEL #15-19H & JOST #1 SWD
SECTION 30, T19S, R2E, 6th P.M.
N 1/2 NE 1/4



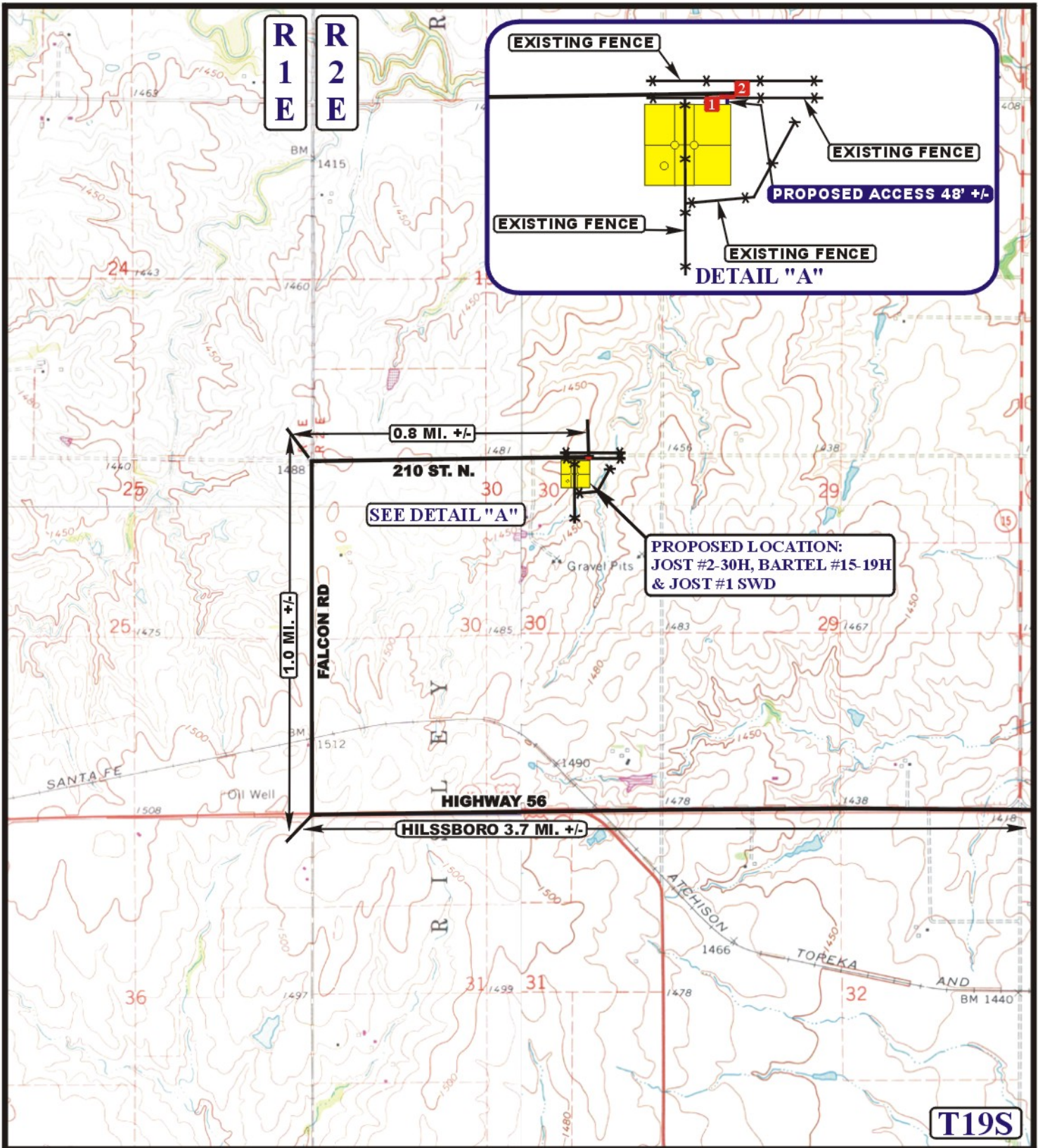
Uintah Engineering & Land Surveying
85 South 200 East Vernal, Utah 84078
(435) 789-1017 * FAX (435) 789-1813

ACCESS ROAD
MAP

09 06 12
MONTH DAY YEAR



SCALE: 1:100,000 DRAWN BY: C.I. REVISED: 00-00-00



LEGEND:

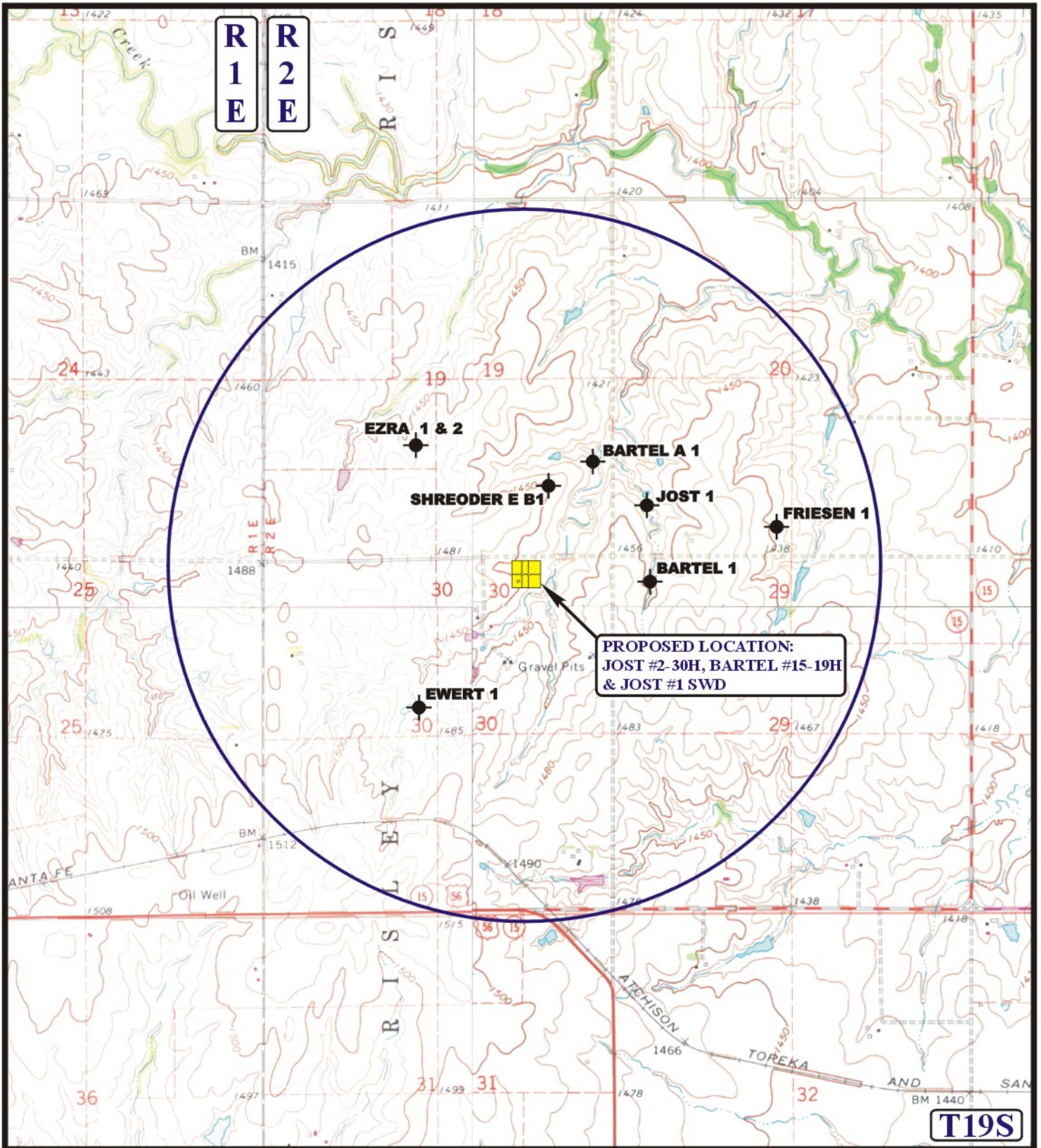
- EXISTING ROAD
- PROPOSED ACCESS ROAD
- EXISTING FENCE
- INSTALL CATTLE GAURD
- 18" CMP REQUIRED



Z.O.C.
 JOST #2-30H, BARTEL #15-19H & JOST #1 SWD
 SECTION 30, T19S, R2E, 6th P.M.
 N 1/2 NE 1/4

U&L S Uintah Engineering & Land Surveying
 85 South 200 East Vernal, Utah 84078
 (435) 789-1017 * FAX (435) 789-1813

ACCESS ROAD MAP	09 06 12 MONTH DAY YEAR	B TOPO
SCALE: 1" = 2000'	DRAWN BY: C.I.	REVISED: 00-00-00



T19S

LEGEND:

- ⊘ DISPOSAL WELLS
- PRODUCING WELLS
- SHUT IN WELLS
- ABANDONED WELLS
- TEMPORARILY ABANDONED

Z.O.C.

JOST #2-30H, BARTEL #15-19H & JOST #1 SWD
SECTION 30, T19S, R2E, 6th P.M.
N 1/2 NE 1/4

U&L S Utah Engineering & Land Surveying
 85 South 200 East Vernal, Utah 84078
 (435) 789-1017 * FAX (435) 789-1813



TOPOGRAPHIC MAP **09 06 12**
 MONTH DAY YEAR
 SCALE: 1" = 2000' DRAWN BY: C.I. REVISED: 00-00-00 **TOPO**