



DRILL STEM TEST REPORT

Prepared For: **Coral Production Corp.**

1600 Stout St.Ste.1500
Denver CO 80202

ATTN: Tim Lauer

B.Keenan #4-1

4-22s-14w Stafford,KS

Start Date: 2012.11.06 @ 20:39:31

End Date: 2012.11.07 @ 03:49:16

Job Ticket #: 49732 DST #: 1

Trilobite Testing, Inc
PO Box 362 Hays, KS 67601
ph: 785-625-4778 fax: 785-625-5620

Printed: 2012.11.19 @ 11:51:49



TRILOBITE TESTING, INC.

DRILL STEM TEST REPORT

Coral Production Corp.

4-22s-14w Stafford, KS

1600 Stout St. Ste. 1500
Denver CO 80202

B. Keenan #4-1

Job Ticket: 49732

DST#: 1

ATTN: Tim Lauer

Test Start: 2012.11.06 @ 20:39:31

GENERAL INFORMATION:

Formation: **Lans. J - K**

Deviated: No Whipstock: ft (KB)

Time Tool Opened: 22:44:31

Time Test Ended: 03:49:16

Test Type: Conventional Bottom Hole (Initial)

Tester: Gary Pevoteaux

Unit No: 56

Interval: 3602.00 ft (KB) To 3650.00 ft (KB) (TVD)

Reference Elevations: 1950.00 ft (KB)

Total Depth: 3650.00 ft (KB) (TVD)

1940.00 ft (CF)

Hole Diameter: 7.88 inches Hole Condition: Poor

KB to GR/CF: 10.00 ft

Serial #: 8352 Inside

Press @ Run Depth: 66.89 psig @ 3603.00 ft (KB)

Capacity: 8000.00 psig

Start Date: 2012.11.06

End Date:

2012.11.07

Last Calib.: 2012.11.07

Start Time: 20:39:36

End Time:

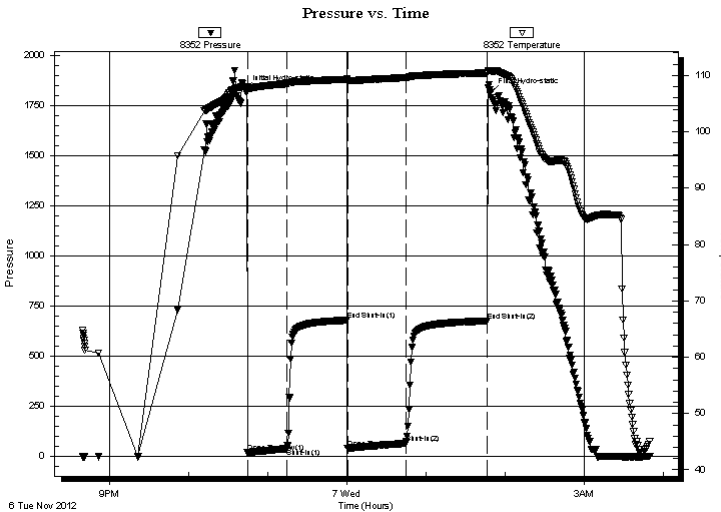
03:49:15

Time On Btm: 2012.11.06 @ 22:42:46

Time Off Btm: 2012.11.07 @ 01:48:46

TEST COMMENT: IF: Weak blow . 1/2 - 2 1/4".
IS: No blow .
FF: Weak blow . 1/4 - 1 1/2".
FS: No blow .

PRESSURE SUMMARY



Time (Min.)	Pressure (psig)	Temp (deg F)	Annotation
0	1827.73	108.03	Initial Hydro-static
2	18.63	107.39	Open To Flow (1)
32	38.94	108.52	Shut-In(1)
77	678.86	109.33	End Shut-In(1)
78	41.12	109.06	Open To Flow (2)
122	66.89	109.62	Shut-In(2)
184	675.00	110.44	End Shut-In(2)
186	1813.42	110.80	Final Hydro-static

Recovery

Length (ft)	Description	Volume (bbl)
100.00	MW 18% m 82% w	1.40

Gas Rates

	Choke (inches)	Pressure (psig)	Gas Rate (Mcf/d)



**TRILOBITE
TESTING, INC.**

DRILL STEM TEST REPORT

TOOL DIAGRAM

Coral Production Corp.

4-22s-14w Stafford,KS

1600 Stout St.Ste.1500
Denver CO 80202

B.Keenan #4-1

Job Ticket: 49732

DST#: 1

ATTN: Tim Lauer

Test Start: 2012.11.06 @ 20:39:31

Tool Information

Drill Pipe:	Length: 3613.00 ft	Diameter: 3.80 inches	Volume: 50.68 bbl	Tool Weight: 2400.00 lb
Heavy Wt. Pipe:	Length: 0.00 ft	Diameter: 0.00 inches	Volume: 0.00 bbl	Weight set on Packer: 24000.00 lb
Drill Collar:	Length: 0.00 ft	Diameter: 0.00 inches	Volume: 0.00 bbl	Weight to Pull Loose: 65000.00 lb
			<u>Total Volume: 50.68 bbl</u>	Tool Chased 0.00 ft
Drill Pipe Above KB:	31.00 ft			String Weight: Initial 53000.00 lb
Depth to Top Packer:	3602.00 ft			Final 53000.00 lb
Depth to Bottom Packer:	ft			
Interval between Packers:	48.00 ft			
Tool Length:	68.00 ft			
Number of Packers:	2	Diameter: 6.75 inches		

Tool Comments:

Tool Description	Length (ft)	Serial No.	Position	Depth (ft)	Accum. Lengths
------------------	-------------	------------	----------	------------	----------------

C.O. Sub	1.00			3583.00	
Shut in tool	5.00			3588.00	
HMV	5.00			3593.00	
Packer	4.00			3597.00	20.00 Bottom Of Top Packer
Packer	5.00			3602.00	
Stubb	1.00			3603.00	
Recorder	0.00	8352	Inside	3603.00	
Recorder	0.00	8370	Outside	3603.00	
Perforations	10.00			3613.00	
Blank Spacing	32.00			3645.00	
Bullnose	5.00			3650.00	48.00 Bottom Packers & Anchor

Total Tool Length: 68.00



**TRILOBITE
TESTING, INC.**

DRILL STEM TEST REPORT

FLUID SUMMARY

Coral Production Corp.

4-22s-14w Stafford,KS

1600 Stout St.Ste.1500
Denver CO 80202

B.Keenan #4-1

Job Ticket: 49732

DST#: 1

ATTN: Tim Lauer

Test Start: 2012.11.06 @ 20:39:31

Mud and Cushion Information

Mud Type: Gel Chem	Cushion Type:	Oil API:	deg API
Mud Weight: 10.00 lb/gal	Cushion Length: ft	Water Salinity:	90000 ppm
Viscosity: 57.00 sec/qt	Cushion Volume: bbl		
Water Loss: 9.58 in ³	Gas Cushion Type:		
Resistivity: 0.00 ohm.m	Gas Cushion Pressure: psig		
Salinity: 5000.00 ppm			
Filter Cake: 0.20 inches			

Recovery Information

Recovery Table

Length ft	Description	Volume bbl
100.00	MW 18% _m 82% _w	1.403

Total Length: 100.00 ft Total Volume: 1.403 bbl

Num Fluid Samples: 0

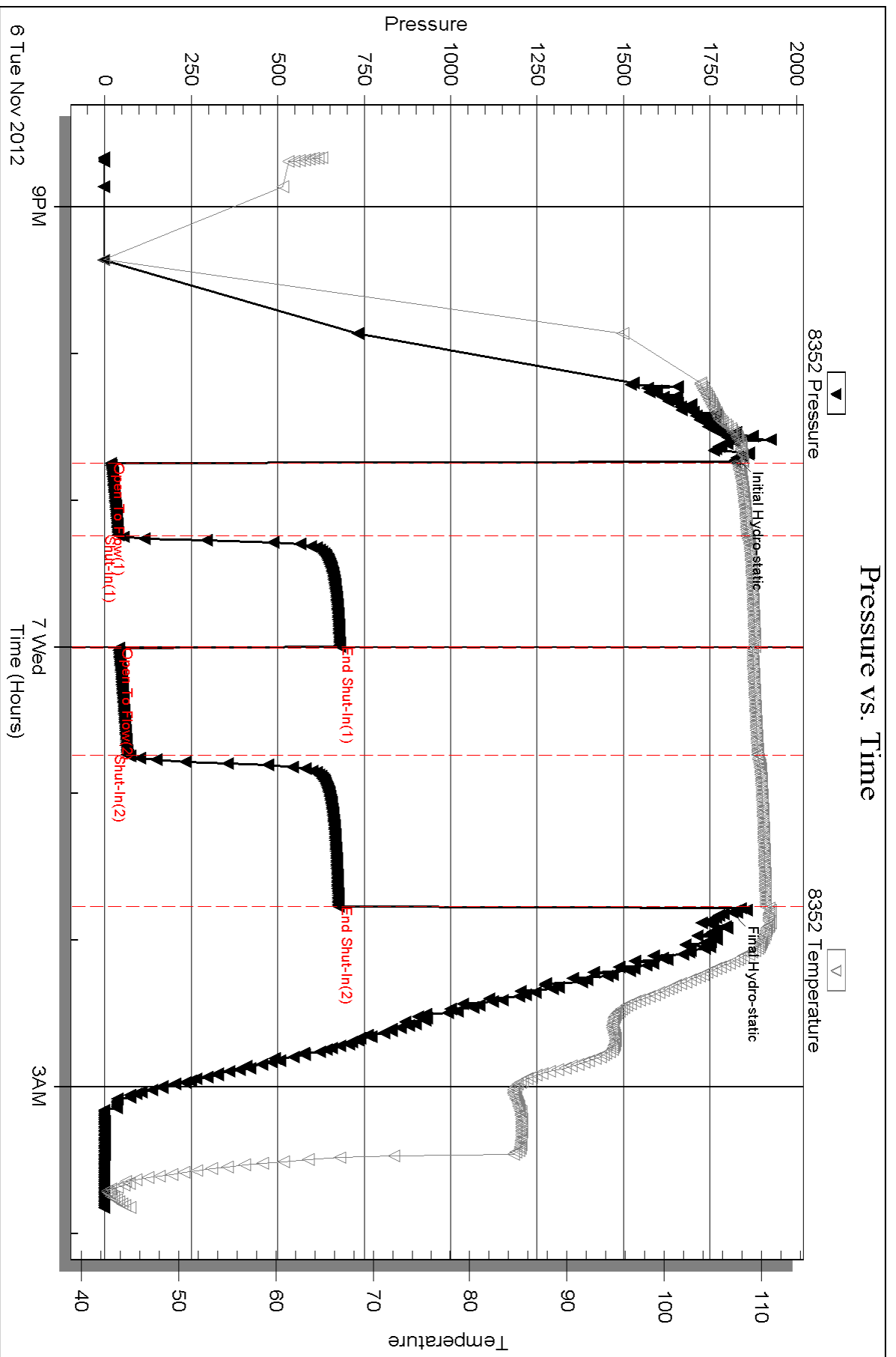
Num Gas Bombs: 0

Serial #: none

Laboratory Name:

Laboratory Location:

Recovery Comments: Rw .13ohms @49deg

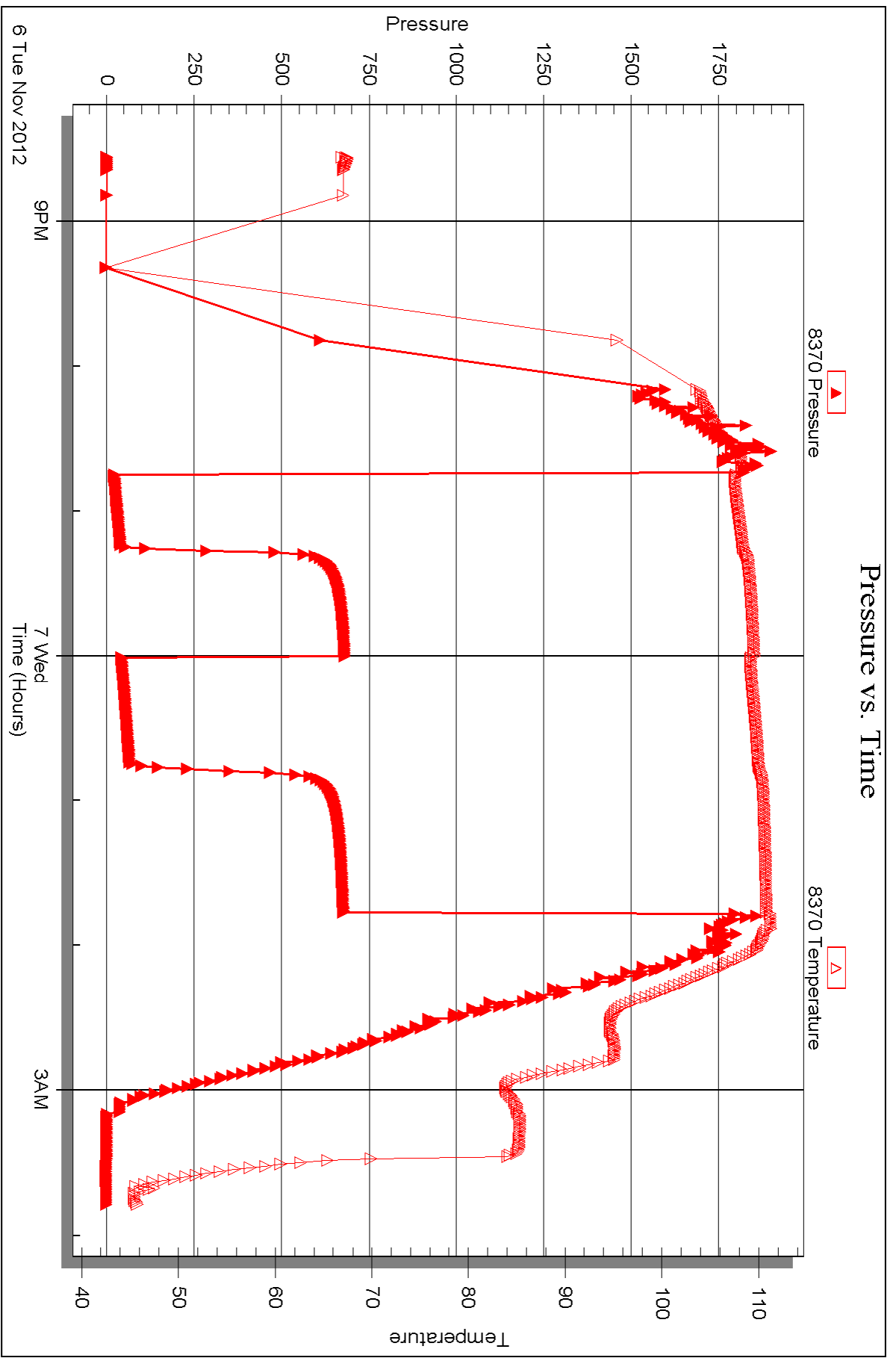


Serial #: 8370

Outside Coral Production Corp.

B. Keenan #4-1

DST Test Number: 1



Triobite Testing, Inc

Ref. No: 49732

Printed: 2012.11.19 @ 11:51:53



DRILL STEM TEST REPORT

Prepared For: **Coral Production Corp.**

1600 Stout St.Ste.1500
Denver CO 80202

ATTN: Tim Lauer

B.Keenan #4-1

4-22s-14w Stafford,KS

Start Date: 2012.11.07 @ 20:39:03

End Date: 2012.11.08 @ 02:57:48

Job Ticket #: 49733 DST #: 2

Trilobite Testing, Inc

PO Box 362 Hays, KS 67601

ph: 785-625-4778 fax: 785-625-5620

Printed: 2012.11.19 @ 11:50:54



TRILOBITE TESTING, INC.

DRILL STEM TEST REPORT

Coral Production Corp.

4-22s-14w Stafford, KS

1600 Stout St. Ste. 1500
Denver CO 80202

B. Keenan #4-1

Job Ticket: 49733

DST#: 2

ATTN: Tim Lauer

Test Start: 2012.11.07 @ 20:39:03

GENERAL INFORMATION:

Formation: **Lans. L, Viola, Simpson**

Deviated: No Whipstock: ft (KB)

Time Tool Opened: 22:36:33

Time Test Ended: 02:57:48

Test Type: Conventional Bottom Hole (Reset)

Tester: Gary Pevoteaux

Unit No: 56

Interval: 3654.00 ft (KB) To 3798.00 ft (KB) (TVD)

Reference Elevations: 1950.00 ft (KB)

Total Depth: 3798.00 ft (KB) (TVD)

1940.00 ft (CF)

Hole Diameter: 7.88 inches Hole Condition: Poor

KB to GR/CF: 10.00 ft

Serial #: 8352

Inside

Press @ Run Depth: 28.41 psig @ 3655.00 ft (KB)

Capacity: 8000.00 psig

Start Date: 2012.11.07

End Date:

2012.11.08

Last Calib.:

2012.11.08

Start Time: 20:39:08

End Time:

02:57:47

Time On Btm:

2012.11.07 @ 22:35:18

Time Off Btm:

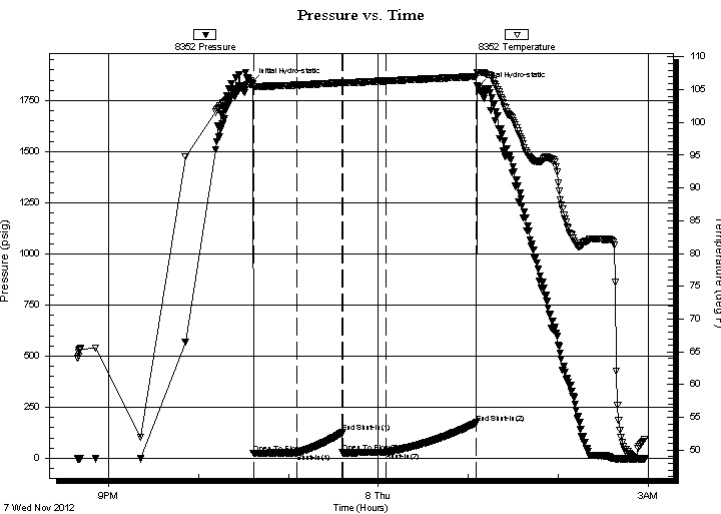
2012.11.08 @ 01:06:48

TEST COMMENT: IF: Weak blow . 3/4" decreasing.

IS: No blow .

FF: Weak surge. No blow .

FS: No blow .



PRESSURE SUMMARY

Time (Min.)	Pressure (psig)	Temp (deg F)	Annotation
0	1836.19	105.84	Initial Hydro-static
2	25.13	105.40	Open To Flow (1)
31	26.30	105.70	Shut-In(1)
61	126.02	106.08	End Shut-In(1)
61	27.58	106.02	Open To Flow (2)
90	28.41	106.34	Shut-In(2)
150	173.71	107.01	End Shut-In(2)
152	1820.23	107.64	Final Hydro-static

Recovery

Length (ft)	Description	Volume (bbl)
12.00	SOCM 1%o 99% m (good odor)	0.17

* Recovery from multiple tests

Gas Rates

Choke (inches)	Pressure (psig)	Gas Rate (Mcf/d)



TRILOBITE TESTING, INC.

DRILL STEM TEST REPORT

Coral Production Corp.

4-22s-14w Stafford, KS

1600 Stout St. Ste. 1500
Denver CO 80202

B. Keenan #4-1

Job Ticket: 49733

DST#: 2

ATTN: Tim Lauer

Test Start: 2012.11.07 @ 20:39:03

GENERAL INFORMATION:

Formation: **Lans.L, Viola, Simpson**

Deviated: No Whipstock: ft (KB)

Time Tool Opened: 22:36:33

Time Test Ended: 02:57:48

Test Type: Conventional Bottom Hole (Reset)

Tester: Gary Pevoteaux

Unit No: 56

Interval: 3654.00 ft (KB) To 3798.00 ft (KB) (TVD)

Reference Elevations: 1950.00 ft (KB)

Total Depth: 3798.00 ft (KB) (TVD)

1940.00 ft (CF)

Hole Diameter: 7.88 inches Hole Condition: Poor

KB to GR/CF: 10.00 ft

Serial #: 8370 Outside

Press @ Run Depth: psig @ 3655.00 ft (KB)

Capacity: 8000.00 psig

Start Date: 2012.11.07 End Date: 2012.11.08

Last Calib.: 2012.11.08

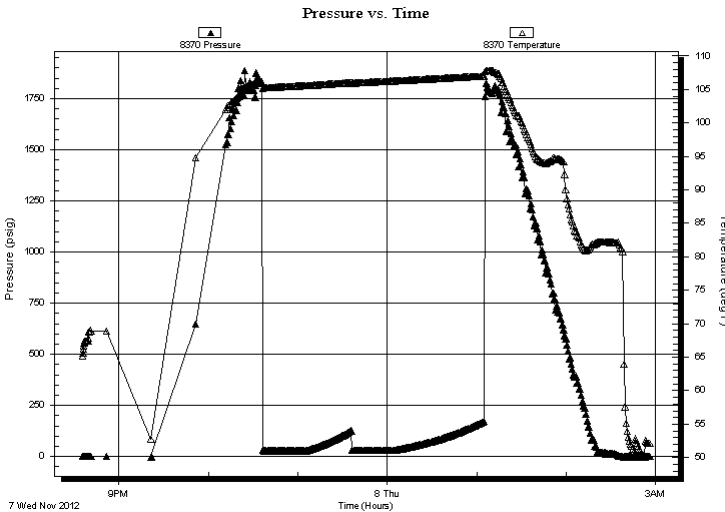
Start Time: 20:35:38 End Time: 02:56:02

Time On Btm:

Time Off Btm:

TEST COMMENT: IF: Weak blow . 3/4" decreasing.
IS: No blow .
FF: Weak surge. No blow .
FS: No blow .

PRESSURE SUMMARY



Time (Min.)	Pressure (psig)	Temp (deg F)	Annotation

Recovery

Length (ft)	Description	Volume (bbl)
12.00	SOCM 1%o 99%m (good odor)	0.17

Gas Rates

	Choke (inches)	Pressure (psig)	Gas Rate (Mcf/d)

* Recovery from multiple tests



**TRILOBITE
TESTING, INC.**

DRILL STEM TEST REPORT

TOOL DIAGRAM

Coral Production Corp.

4-22s-14w Stafford,KS

1600 Stout St.Ste.1500
Denver CO 80202

B.Keenan #4-1

Job Ticket: 49733

DST#: 2

ATTN: Tim Lauer

Test Start: 2012.11.07 @ 20:39:03

Tool Information

Drill Pipe:	Length: 3640.00 ft	Diameter: 3.80 inches	Volume: 51.06 bbl	Tool Weight: 2400.00 lb
Heavy Wt. Pipe:	Length: 0.00 ft	Diameter: 0.00 inches	Volume: 0.00 bbl	Weight set on Packer: 24000.00 lb
Drill Collar:	Length: 0.00 ft	Diameter: 0.00 inches	Volume: 0.00 bbl	Weight to Pull Loose: 68000.00 lb
			<u>Total Volume: 51.06 bbl</u>	Tool Chased 0.00 ft
Drill Pipe Above KB:	14.00 ft			String Weight: Initial 54000.00 lb
Depth to Top Packer:	3654.00 ft			Final 54000.00 lb
Depth to Bottom Packer:	ft			
Interval between Packers:	144.00 ft			
Tool Length:	172.00 ft			
Number of Packers:	2	Diameter: 6.75 inches		

Tool Comments:

Tool Description	Length (ft)	Serial No.	Position	Depth (ft)	Accum. Lengths
------------------	-------------	------------	----------	------------	----------------

C.O. Sub	1.00			3627.00	
Shut in tool	5.00			3632.00	
HMV	5.00			3637.00	
Jars	5.00			3642.00	
Safety Joint	3.00			3645.00	
Packer	4.00			3649.00	28.00 Bottom Of Top Packer
Packer	5.00			3654.00	
Stubb	1.00			3655.00	
Recorder	0.00	8352	Inside	3655.00	
Recorder	0.00	8370	Outside	3655.00	
Perforations	10.00			3665.00	
Blank Spacing	126.00			3791.00	
Perforations	2.00			3793.00	
Bullnose	5.00			3798.00	144.00 Bottom Packers & Anchor

Total Tool Length: 172.00



**TRILOBITE
TESTING, INC.**

DRILL STEM TEST REPORT

FLUID SUMMARY

Coral Production Corp.

4-22s-14w Stafford,KS

1600 Stout St.Ste.1500
Denver CO 80202

B.Keenan #4-1

Job Ticket: 49733

DST#: 2

ATTN: Tim Lauer

Test Start: 2012.11.07 @ 20:39:03

Mud and Cushion Information

Mud Type: Gel Chem

Cushion Type:

Oil API:

deg API

Mud Weight: 9.00 lb/gal

Cushion Length:

ft

Water Salinity:

5500 ppm

Viscosity: 54.00 sec/qt

Cushion Volume:

bbbl

Water Loss: 9.59 in³

Gas Cushion Type:

Resistivity: 0.00 ohm.m

Gas Cushion Pressure:

psig

Salinity: 5500.00 ppm

Filter Cake: 0.20 inches

Recovery Information

Recovery Table

Length ft	Description	Volume bbl
12.00	SOCM 1%o 99%m (good odor)	0.168

Total Length: 12.00 ft Total Volume: 0.168 bbl

Num Fluid Samples: 0

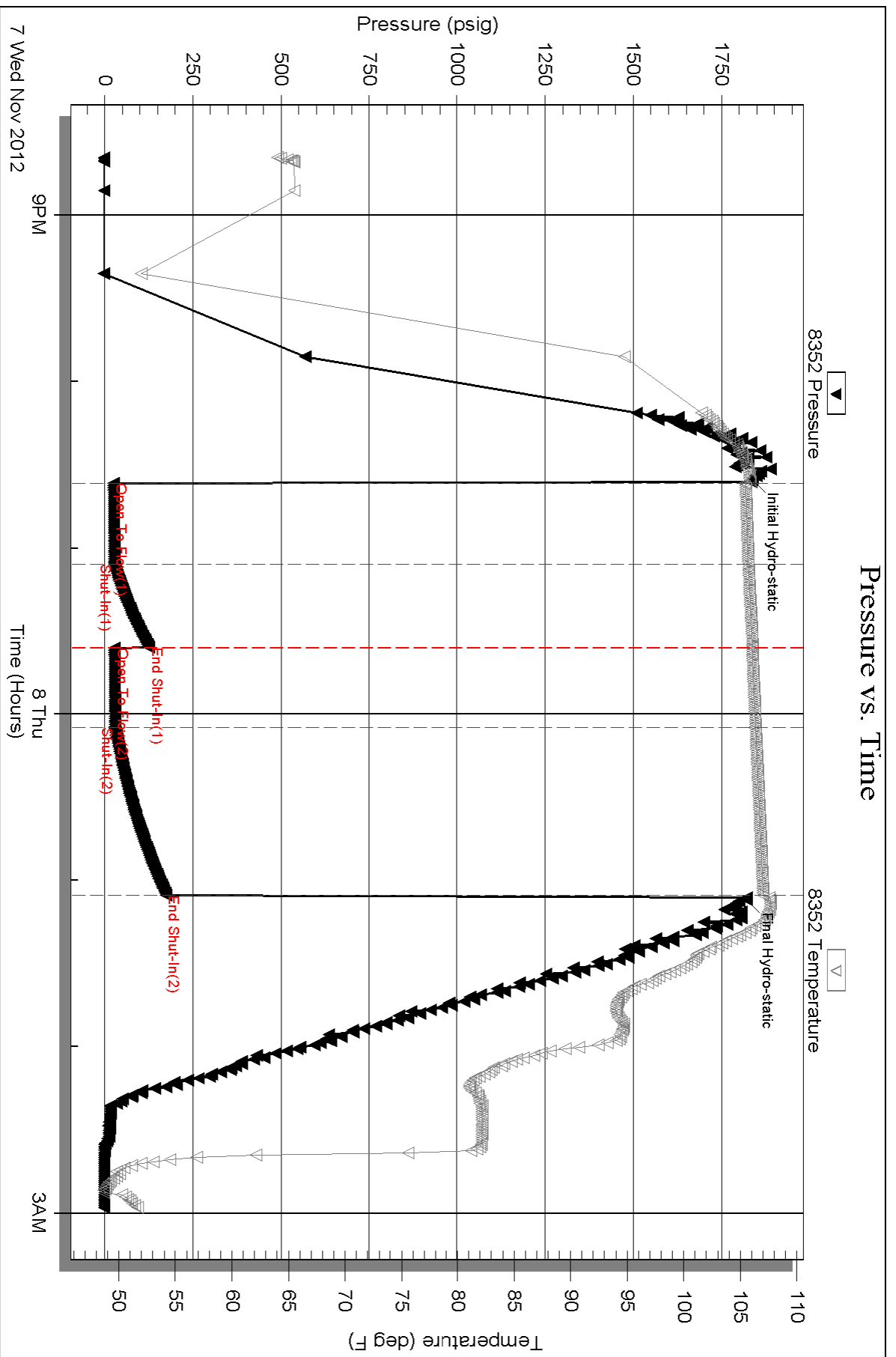
Num Gas Bombs: 0

Serial #: none

Laboratory Name:

Laboratory Location:

Recovery Comments:

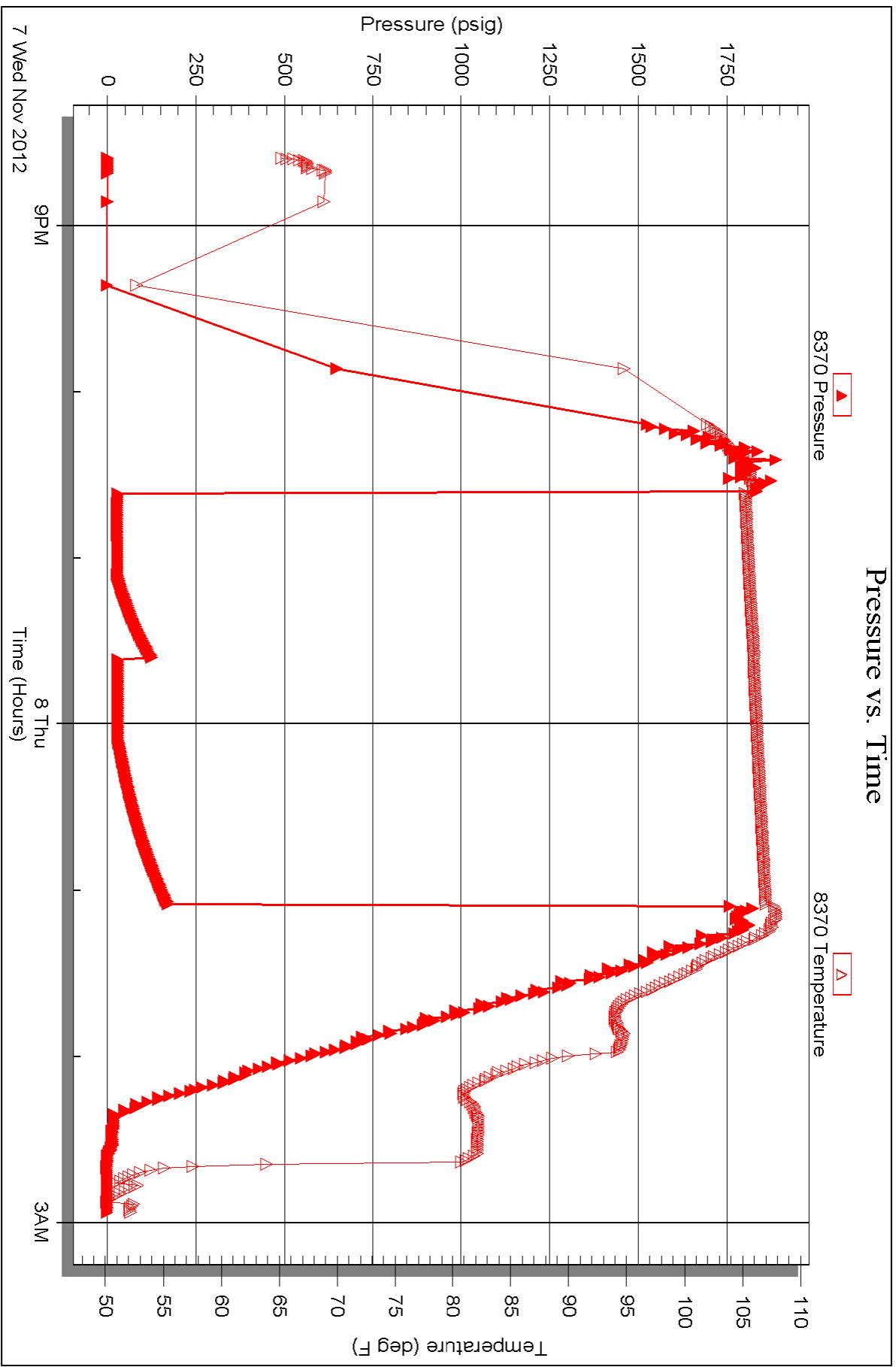


Serial #: 8370

Outside Coral Production Corp.

B. Keenan #4-1

DST Test Number: 2





TRILOBITE TESTING INC.

P.O. Box 1733 • Hays, Kansas 67601

Test Ticket

NO. 49732

4/10

Well Name & No. B. KEENAN #4-1 Test No. 1 Date 11-6-12
 Company CORAL PRODUCTION CORP. Elevation 1950 KB 1940 GL
 Address 1600 STOUT ST. STE. 1500, DENVER CO. 80202
 Co. Rep / Geo. TIM LAUER Rig MAVERICK DIRLG. #106
 Location: Sec. 4 Twp. 22^s Rge. 14^w Co. STAFFORD State Ks.

Interval Tested 3602 ~ 3650' Zone Tested LANS. J-K
 Anchor Length 48' Drill Pipe Run 3613' Mud Wt. 9.5
 Top Packer Depth 3597' Drill Collars Run 0 Vis 57
 Bottom Packer Depth 3602' Wt. Pipe Run 0 WL 9.6cc
 Total Depth 3650' Chlorides 5,000 ppm System LCM 0
 Blow Description IF: Weak below, 1/2 - 2 1/4", ISI: No below.

FF: Weak below, 1/4 - 1 1/2". FSI: No below.

Rec	Feet of	%gas	%oil	%water	%mud
100	MW		82	18	

Rec Total 100 Fluid BHT 110° Gravity N/A API RW 13 @ 49 °F Chlorides 90,000 ppm
 (A) Initial Hydrostatic 1828 Test 1150 T-On Location 1930
 (B) First Initial Flow 17 Jars T-Started 2039
 (C) First Final Flow 39 Safety Joint T-Open 2244
 (D) Initial Shut-In 679 Circ Sub T-Pulled 0148
 (E) Second Initial Flow 41 Hourly Standby T-Out 0349
 (F) Second Final Flow 67 Mileage 860 133.30 Comments _____
 (G) Final Shut-In 675 Sampler _____
 (H) Final Hydrostatic 1813 Straddle _____
 Ruined Shale Packer _____
 Shale Packer _____
 Ruined Packer _____
 Extra Packer _____
 Extra Copies _____
 Initial Open 30
 Initial Shut-In 45
 Final Flow 45
 Final Shut-In 60
 Extra Recorder _____
 Day Standby _____
 Accessibility 1283.30
 Sub Total _____
 Total 1283.30
 MP/DST Disc't _____

Approved By Tim Lauer Our Representative Gary Swatney
 TriLOBITE Testing Inc. shall not be liable for damaged of any kind of the property or personnel of the one for whom a test is made, or for any loss suffered or sustained, directly or indirectly, through the use of its equipment, or its statements or opinion concerning the results of any test, tools lost or damaged in the hole shall be paid for at cost by the party for whom the test is made.



TRILOBITE TESTING INC.

P.O. Box 1733 • Hays, Kansas 67601

Test Ticket

NO. 49733

4/10

Well Name & No. B. KEENAN # 4-1 Test No. 2 Date 11-7-12
 Company CORAL PRODUCTION CORP. Elevation 1950 KB 1940 GL
 Address 1600 STOUT ST. STE. 1500, DENVER CO. 80202
 Co. Rep / Geo. TIM LAUER Rig MAVERICK DRUG #106
 Location: Sec. 4 Twp. 22S Rge. 14W Co. STAFFORD State KS.

Interval Tested 3654 - 3798' Zone Tested LANS. L, VIOLA, SIMPSON SD.
 Anchor Length 144' Drill Pipe Run 3640' Mud Wt. 9.3
 Top Packer Depth 3649' Drill Collars Run 0 Vis 54
 Bottom Packer Depth 3654' Wt. Pipe Run 0 WL 9.6cc
 Total Depth 3798' Chlorides 5500ppm System LCM 2#

Blow Description IF: Weak blow. 3/4" decreasing. FSI: No blow.
FF: Weak surge. N. blow. FSI: No blow.

Rec	Feet of	%gas	%oil	%water	%mud
<u>12</u>	<u>SOEM (Good order)</u>			<u>99</u>	
Rec	Feet of	%gas	%oil	%water	%mud
Rec	Feet of	%gas	%oil	%water	%mud
Rec	Feet of	%gas	%oil	%water	%mud
Rec	Feet of	%gas	%oil	%water	%mud

Rec Total 12 Fluid BHT 107° Gravity N/A API RW N.C. @ — °F Chlorides 5500ppm
 (A) Initial Hydrostatic 1836 Test 1150 T-On Location 2020
 (B) First Initial Flow 25 * Jars 250 T-Started 2039
 (C) First Final Flow 26 * Safety Joint 75 T-Open 2236
 (D) Initial Shut-In 126 Circ Sub T-Pulled 0104
 (E) Second Initial Flow 28 Hourly Standby T-Out 0257
 (F) Second Final Flow 28 Mileage 86 X2 HAD ME LEAVE Comments 266.60
 (G) Final Shut-In 174 Sampler TOOLS FOR ARB.
 (H) Final Hydrostatic 1820 Straddle TEST! NO TEST Ruined Shale Packer
 Shale Packer Ruined Packer
 Extra Packer Extra Copies

Initial Open 30 Extra Recorder Sub Total 0
 Initial Shut-In 30 Day Standby Total 1741.60
 Final Flow 30 Accessibility MP/DST Disc't
 Final Shut-In 60 Sub Total 1741.60

Approved By Tim J. Lauer Our Representative Cory P. [Signature]
 TriLOBITE TESTING Inc. shall not be liable for damaged of any kind of the property or personnel of the one for whom a test is made, or for any loss suffered or sustained, directly or indirectly, through the use of its equipment, or its statements or opinion concerning the results of any test, tools lost or damaged in the hole shall be paid for at cost by the party for whom the test is made.