

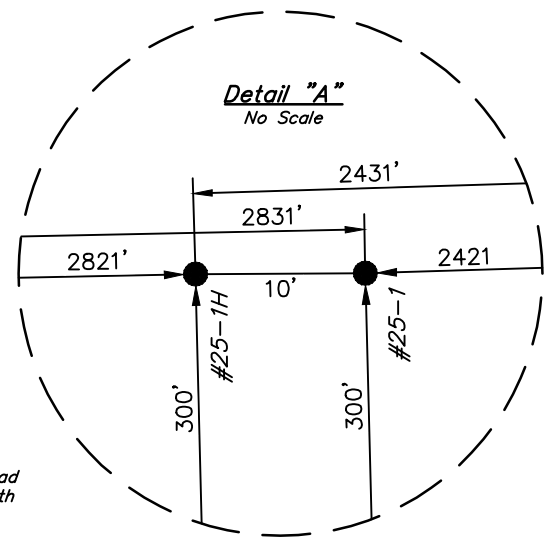
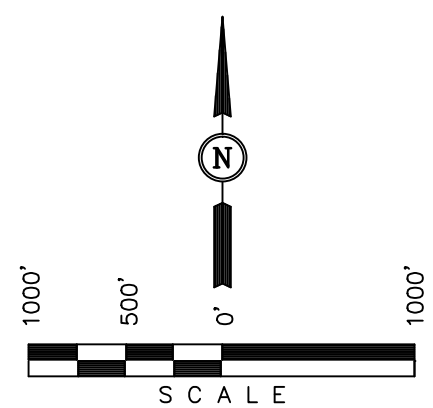
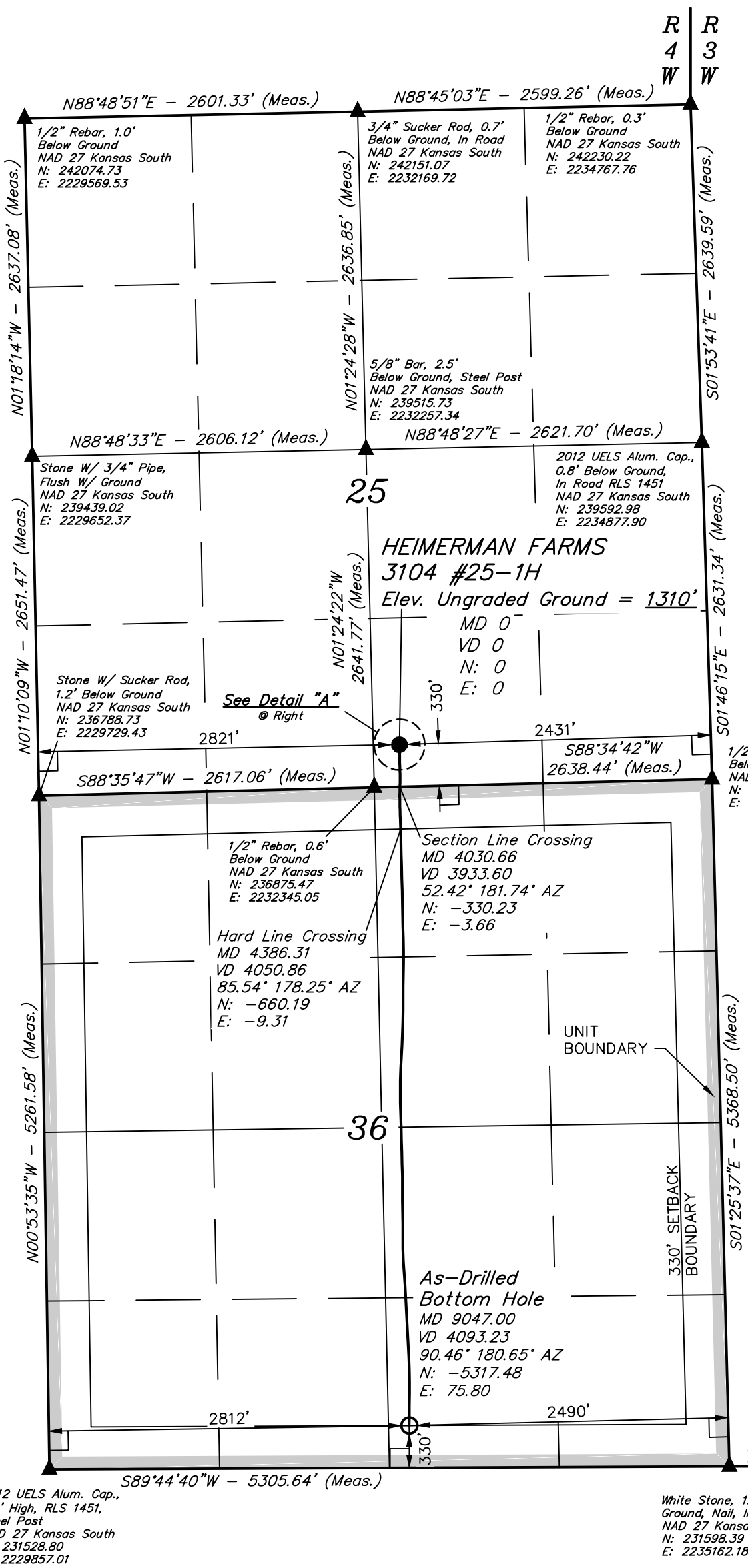
Well location, HEIMERMAN FARMS 3104 #25-1H, located as shown in the SW 1/4 SE 1/4 of Section 25, T31S, R4W, 6th P.M., Sumner County, Kansas.

BASIS OF ELEVATION

BLACK ELEVATION LOCATED AT THE NORTHEAST CORNER OF SECTION 25, T31S, R4W, 6th P.M. TAKEN FROM THE MILAN, QUADRANGLE, KANSAS, SUMNER COUNTY, 7.5 MINUTE QUAD (TOPOGRAPHIC MAP) PUBLISHED BY THE UNITED STATES DEPARTMENT OF THE INTERIOR, GEOLOGICAL SURVEY. SAID ELEVATION IS MARKED AS BEING 1333 FEET.

BASIS OF BEARINGS

BASIS OF BEARINGS IS A G.P.S. OBSERVATION.



2012 UELS Alum. Cap., 0.2' High, RLS 1451, Steel Post  
NAD 27 Kansas South  
N: 231528.80  
E: 2229857.01

White Stone, 1.0' Below Ground, Nail, In Road Intersection  
NAD 27 Kansas South  
N: 231598.39  
E: 2235162.18

CERTIFICATE

THIS IS TO CERTIFY THAT THE ABOVE PLAT WAS PREPARED FROM FIELD NOTES OF ACTUAL SURVEYS MADE BY ME OR UNDER MY SUPERVISION AND THAT THE SAME ARE TRUE AND CORRECT TO THE BEST OF MY KNOWLEDGE AND BELIEF.

*Justin S. ...*  
REGISTERED LAND SURVEYOR  
REGISTRATION NO. 1451  
STATE OF KANSAS

- LEGEND:**
- └─┘ = 90° SYMBOL
  - = PROPOSED WELL HEAD.
  - ▲ = SECTION CORNERS LOCATED.

**NOTE:**  
AS-DRILLED WELL BORE PATH AND INFORMATION PROVIDED BY SGOMI.

NAD 83 (#25-1H AS-DRILLED BOTTOM HOLE) LATITUDE = 37°18'02.95" (37.300819) LONGITUDE = 97°42'01.72" (97.700478)	NAD 83 (#25-1H SURFACE LOCATION) LATITUDE = 37°18'55.52" (37.315422) LONGITUDE = 97°42'02.66" (97.700739)
NAD 27 (#25-1H AS-DRILLED BOTTOM HOLE) LATITUDE = 37°18'02.88" (37.300800) LONGITUDE = 97°42'00.53" (97.700147)	NAD 27 (#25-1H SURFACE LOCATION) LATITUDE = 37°18'55.45" (37.315403) LONGITUDE = 97°42'01.48" (97.700411)
STATE PLANE NAD 27 (KANSAS SOUTH) N: 231895.84 E: 2232660.86	STATE PLANE NAD 27 (KANSAS SOUTH) N: 237212.36 E: 2232538.99

<b>UINTAH ENGINEERING &amp; LAND SURVEYING</b>		
85 SOUTH 200 EAST - VERNAL, UTAH 84078		
(435) 789-1017		
SCALE 1" = 1000'	DATE SURVEYED: 09-24-12	DATE DRAWN: 11-13-12
PARTY L.S. J.P. C.A.G.	REFERENCES G.L.O. PLAT	
WEATHER COLD	FILE SGOMI	