

Railroad Spike  
0.1' Below Ground,  
In Road  
NAD 27 Kansas South  
N: 564913.07  
E: 2134455.30

**T21S, R6W, 6th P.M.**

5/8" Rebar  
1.4' Below Ground,  
In Road  
NAD 27 Kansas South  
N: 564885.70  
E: 2139662.01

**SGOMI**

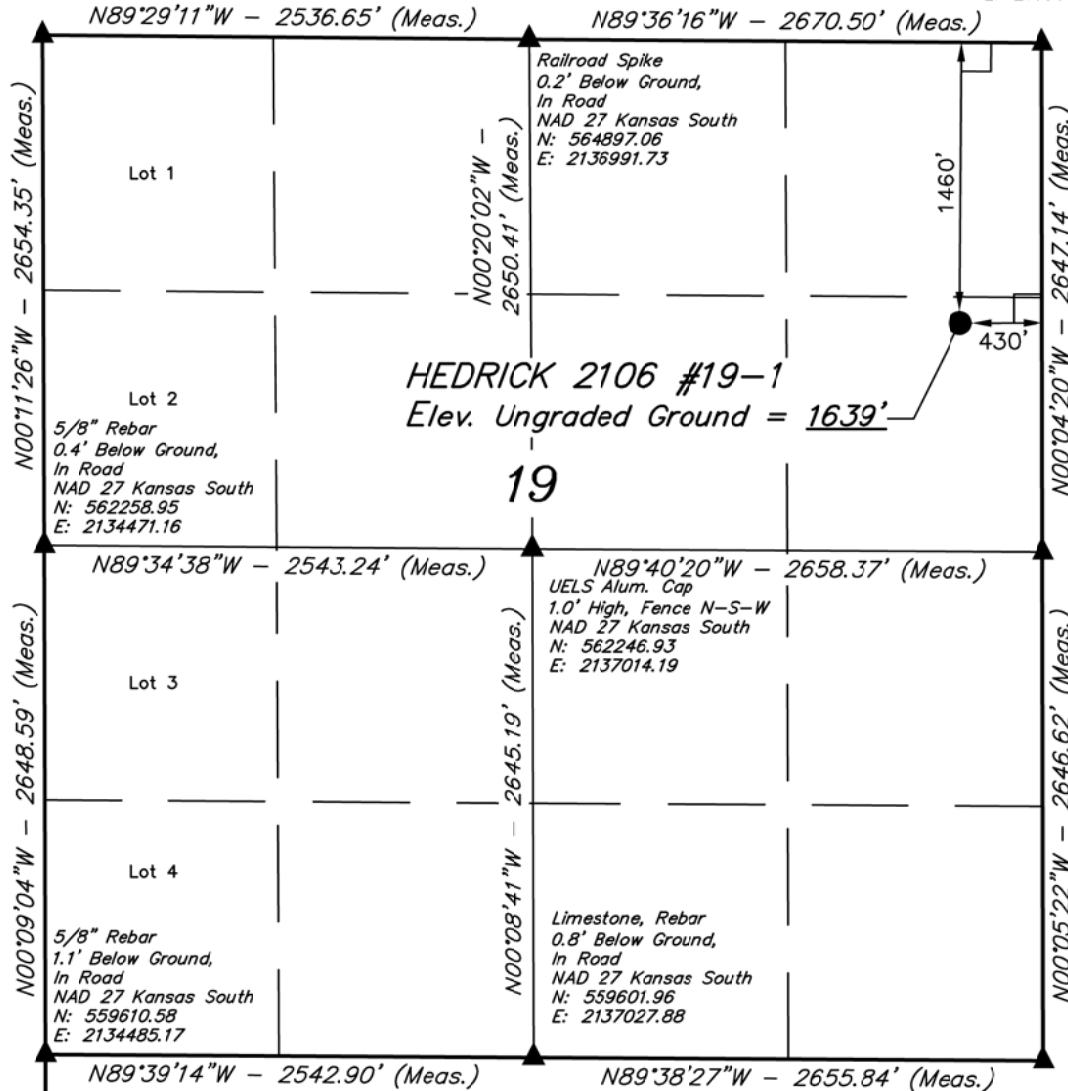
Well location, HEDRICK 2106 #19-1, located as shown in the SE 1/4 NE 1/4 of Section 19, T21S, R6W, 6th P.M., Rice County, Kansas.

**BASIS OF ELEVATION**

SPOT ELEVATION LOCATED AT THE SW CORNER OF SECTION 18, T23S, R8W, 6th P.M. TAKEN FROM THE ALDEN SE, QUADRANGLE, KANSAS, RENO COUNTY, 7.5 MINUTE QUAD (TOPOGRAPHIC MAP) PUBLISHED BY THE UNITED STATES DEPARTMENT OF THE INTERIOR, GEOLOGICAL SURVEY, SAID ELEVATION IS MARKED AS BEING 1688 FEET.

**BASIS OF BEARINGS**

BASIS OF BEARINGS IS A G.P.S. OBSERVATION.



1/2" Iron Bar  
0.4' Below Ground,  
In Road  
NAD 27 Kansas South  
N: 562238.77  
E: 2139672.36

Limestone, Rebar  
1.0' Below Ground,  
In Road  
NAD 27 Kansas South  
N: 559592.36  
E: 2139683.50



**CERTIFICATE**

THIS IS TO CERTIFY THAT THE ABOVE PLAT WAS PREPARED FROM FIELD NOTES OF ACTUAL SURVEYS MADE BY ME OR UNDER MY SUPERVISION AND THAT THE SAME ARE TRUE AND CORRECT TO THE BEST OF MY KNOWLEDGE AND BELIEF.

*Robert S. 114*  
REGISTERED LAND SURVEYOR  
REGISTRATION NO. 1451  
STATE OF KANSAS 09-11-12

R R  
7 6  
W W

**LEGEND:**

- └─┘ = 90° SYMBOL
- = PROPOSED WELL HEAD.
- ▲ = SECTION CORNERS LOCATED.

<b>UINTAH ENGINEERING &amp; LAND SURVEYING</b>			
85 SOUTH 200 EAST - VERNAL, UTAH 84078			
(435) 789-1017			
SCALE 1" = 1000'	DATE SURVEYED: 08-15-12	DATE DRAWN: 09-11-12	
PARTY J.P. C.B. C.A.G.	REFERENCES G.L.O. PLAT		
WEATHER HOT	FILE SGOMI		

<b>NAD 83 (#19-1 SURFACE LOCATION)</b>
LATITUDE = 38°12'47.01" (38.213058)
LONGITUDE = 98°00'56.60" (98.015722)
<b>NAD 27 (#19-1 SURFACE LOCATION)</b>
LATITUDE = 38°12'46.97" (38.213047)
LONGITUDE = 98°00'55.41" (98.015392)
<b>STATE PLANE NAD 27 (KANSAS SOUTH)</b>
N: 563427.62 E: 2139237.71