



DRILL STEM TEST REPORT

Prepared For: **Coral Production Corp.**

1600 Stout St.Ste.1500
Denver CO 80202

ATTN: Tim Lauer

Keenan #36-1

36-21s-14w Stafford,KS

Start Date: 2012.10.28 @ 21:39:40

End Date: 2012.10.29 @ 05:20:55

Job Ticket #: 49727 DST #: 1

Trilobite Testing, Inc

PO Box 362 Hays, KS 67601

ph: 785-625-4778 fax: 785-625-5620

Printed: 2012.11.01 @ 13:57:34



TRILOBITE TESTING, INC.

DRILL STEM TEST REPORT

Coral Production Corp.

36-21s-14w Stafford,KS

1600 Stout St.Ste.1500
Denver CO 80202

Keenan #36-1

Job Ticket: 49727

DST#: 1

ATTN: Tim Lauer

Test Start: 2012.10.28 @ 21:39:40

GENERAL INFORMATION:

Formation: **Lans. H I J**

Deviated: No Whipstock: ft (KB)

Time Tool Opened: 23:38:40

Time Test Ended: 05:20:55

Test Type: Conventional Bottom Hole (Initial)

Tester: Gary Pevoteaux

Unit No: 56

Interval: 3535.00 ft (KB) To 3595.00 ft (KB) (TVD)

Reference Elevations: 1937.00 ft (KB)

Total Depth: 3595.00 ft (KB) (TVD)

1927.00 ft (CF)

Hole Diameter: 7.88 inches Hole Condition: Poor

KB to GR/CF: 10.00 ft

Serial #: 8352 Inside

Press @ Run Depth: 155.70 psig @ 3536.00 ft (KB)

Capacity: 8000.00 psig

Start Date: 2012.10.28

End Date:

2012.10.29

Last Calib.:

2012.10.29

Start Time: 21:39:45

End Time:

05:20:54

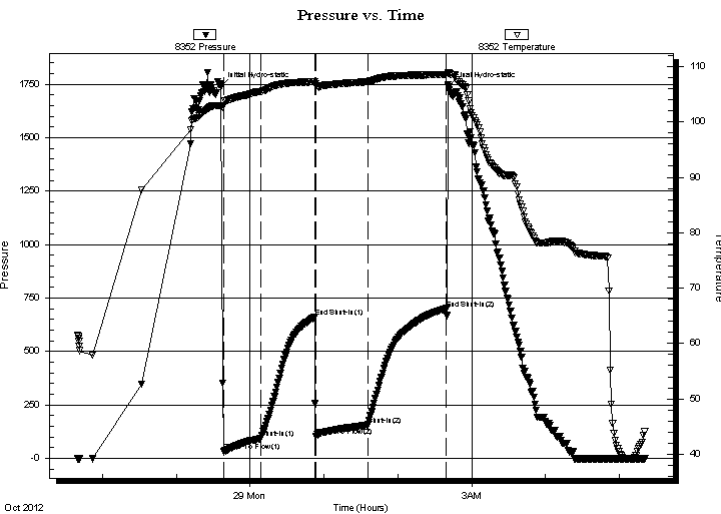
Time On Btm:

2012.10.28 @ 23:36:25

Time Off Btm:

2012.10.29 @ 02:41:10

TEST COMMENT: IF: Strong blow . B.O.B. in 40 secs.
IS: Weak blow . 1/4" or less.
FF: Strong blow . B.O.B. in 40 secs.
FS: Fair blow . 2 - 9" . GTS 10 seconds in to FSIP (w hile bleeding off 2nd open)



PRESSURE SUMMARY

Time (Min.)	Pressure (psig)	Temp (deg F)	Annotation
0	1740.84	102.95	Initial Hydro-static
3	34.05	102.88	Open To Flow (1)
33	93.77	105.44	Shut-In(1)
76	661.18	107.24	End Shut-In(1)
77	102.75	106.90	Open To Flow (2)
119	155.70	107.26	Shut-In(2)
183	700.53	108.50	End Shut-In(2)
185	1737.95	108.84	Final Hydro-static

Recovery

Length (ft)	Description	Volume (bbl)
65.00	GOCM b18%g 28%o 54%m	0.91
235.00	GCO 32%g 27%m 41%o	3.30
75.00	CGO 16%g 84%o	1.05

Gas Rates

	Choke (inches)	Pressure (psig)	Gas Rate (Mcf/d)



TRILOBITE TESTING, INC.

DRILL STEM TEST REPORT

Coral Production Corp.
1600 Stout St. Ste. 1500
Denver CO 80202
ATTN: Tim Lauer

36-21s-14w Stafford, KS
Keenan #36-1
Job Ticket: 49727 **DST#: 1**
Test Start: 2012.10.28 @ 21:39:40

GENERAL INFORMATION:

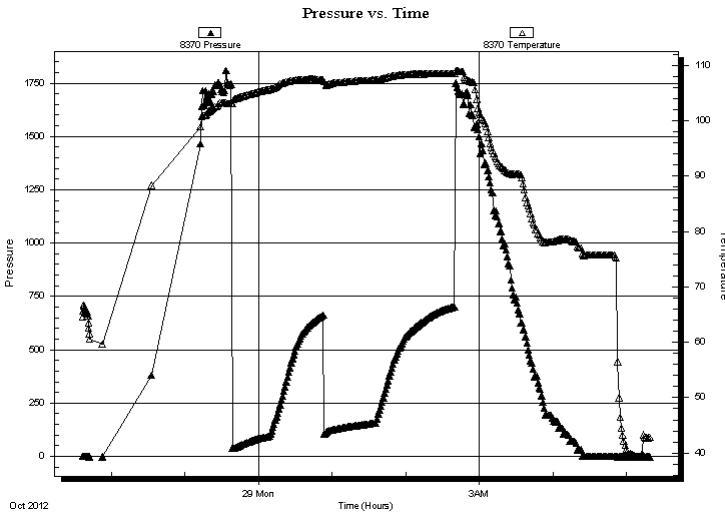
Formation: Lans. H I J
Deviated: No Whipstock: ft (KB) Test Type: Conventional Bottom Hole (Initial)
Time Tool Opened: 23:38:40 Tester: Gary Pevoteaux
Time Test Ended: 05:20:55 Unit No: 56
Interval: 3535.00 ft (KB) To 3595.00 ft (KB) (TVD)
Total Depth: 3595.00 ft (KB) (TVD) Reference Elevations: 1937.00 ft (KB)
Hole Diameter: 7.88 inches Hole Condition: Poor KB to GR/CF: 10.00 ft (CF)

Serial #: 8370

Outside

Press @ Run Depth: psig @ 3536.00 ft (KB) Capacity: 8000.00 psig
Start Date: 2012.10.28 End Date: 2012.10.29 Last Calib.: 2012.10.29
Start Time: 21:36:45 End Time: 05:19:09 Time On Btm:
Time Off Btm:

TEST COMMENT: IF: Strong blow . B.O.B. in 40 secs.
IS: Weak blow . 1/4" or less.
FF: Strong blow . B.O.B. in 40 secs.
FS: Fair blow . 2 - 9". GTS 10 seconds in to FSIP (w hile bleeding off 2nd open)



PRESSURE SUMMARY

Time (Min.)	Pressure (psig)	Temp (deg F)	Annotation

Recovery

Length (ft)	Description	Volume (bbl)
65.00	GOCM b18%g 28%o 54%m	0.91
235.00	GCO 32%g 27%m 41%o	3.30
75.00	CGO 16%g 84%o	1.05

Gas Rates

	Choke (inches)	Pressure (psig)	Gas Rate (Mcf/d)



**TRILOBITE
TESTING, INC.**

DRILL STEM TEST REPORT

TOOL DIAGRAM

Coral Production Corp.

36-21s-14w Stafford,KS

1600 Stout St.Ste.1500
Denver CO 80202

Keenan #36-1

Job Ticket: 49727

DST#: 1

ATTN: Tim Lauer

Test Start: 2012.10.28 @ 21:39:40

Tool Information

Drill Pipe:	Length: 3522.00 ft	Diameter: 3.80 inches	Volume: 49.40 bbl	Tool Weight: 2400.00 lb
Heavy Wt. Pipe:	Length: 0.00 ft	Diameter: 0.00 inches	Volume: 0.00 bbl	Weight set on Packer: 24000.00 lb
Drill Collar:	Length: 0.00 ft	Diameter: 0.00 inches	Volume: 0.00 bbl	Weight to Pull Loose: 67000.00 lb
			<u>Total Volume: 49.40 bbl</u>	Tool Chased 1.00 ft
Drill Pipe Above KB:	7.00 ft			String Weight: Initial 52000.00 lb
Depth to Top Packer:	3535.00 ft			Final 54500.00 lb
Depth to Bottom Packer:	ft			
Interval between Packers:	60.00 ft			
Tool Length:	80.00 ft			
Number of Packers:	2	Diameter: 6.75 inches		

Tool Comments:

Tool Description	Length (ft)	Serial No.	Position	Depth (ft)	Accum. Lengths
------------------	-------------	------------	----------	------------	----------------

C.O. Sub	1.00			3516.00	
Shut in tool	5.00			3521.00	
HMV	5.00			3526.00	
Packer	4.00			3530.00	20.00 Bottom Of Top Packer
Packer	5.00			3535.00	
Stubb	1.00			3536.00	
Recorder	0.00	8352	Inside	3536.00	
Recorder	0.00	8370	Outside	3536.00	
Perforations	5.00			3541.00	
Blank Spacing	31.00			3572.00	
Perforations	18.00			3590.00	
Bullnose	5.00			3595.00	60.00 Bottom Packers & Anchor

Total Tool Length: 80.00



**TRILOBITE
TESTING, INC.**

DRILL STEM TEST REPORT

FLUID SUMMARY

Coral Production Corp.

36-21s-14w Stafford,KS

1600 Stout St.Ste.1500
Denver CO 80202

Keenan #36-1

Job Ticket: 49727

DST#: 1

ATTN: Tim Lauer

Test Start: 2012.10.28 @ 21:39:40

Mud and Cushion Information

Mud Type: Gel Chem

Cushion Type:

Oil API:

24.5 deg API

Mud Weight: 9.00 lb/gal

Cushion Length:

ft

Water Salinity:

4000 ppm

Viscosity: 53.00 sec/qt

Cushion Volume:

bbbl

Water Loss: 10.19 in³

Gas Cushion Type:

Resistivity: 0.00 ohm.m

Gas Cushion Pressure:

psig

Salinity: 4000.00 ppm

Filter Cake: 0.20 inches

Recovery Information

Recovery Table

Length ft	Description	Volume bbl
65.00	GOCM b18%g 28%o 54%m	0.912
235.00	GCO 32%g 27%m 41%o	3.296
75.00	CGO 16%g 84%o	1.052

Total Length: 375.00 ft

Total Volume: 5.260 bbl

Num Fluid Samples: 0

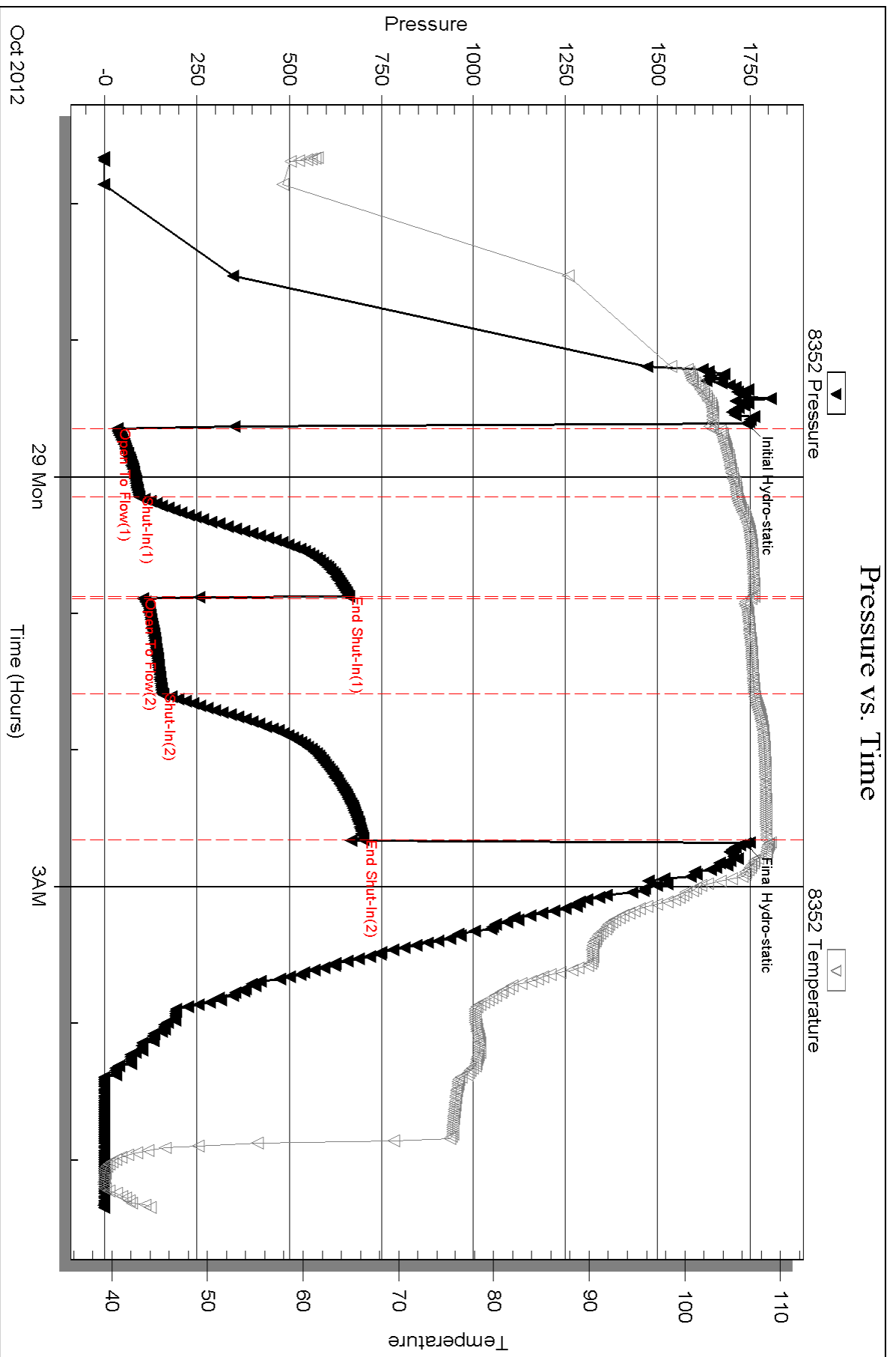
Num Gas Bombs: 0

Serial #: none

Laboratory Name:

Laboratory Location:

Recovery Comments:

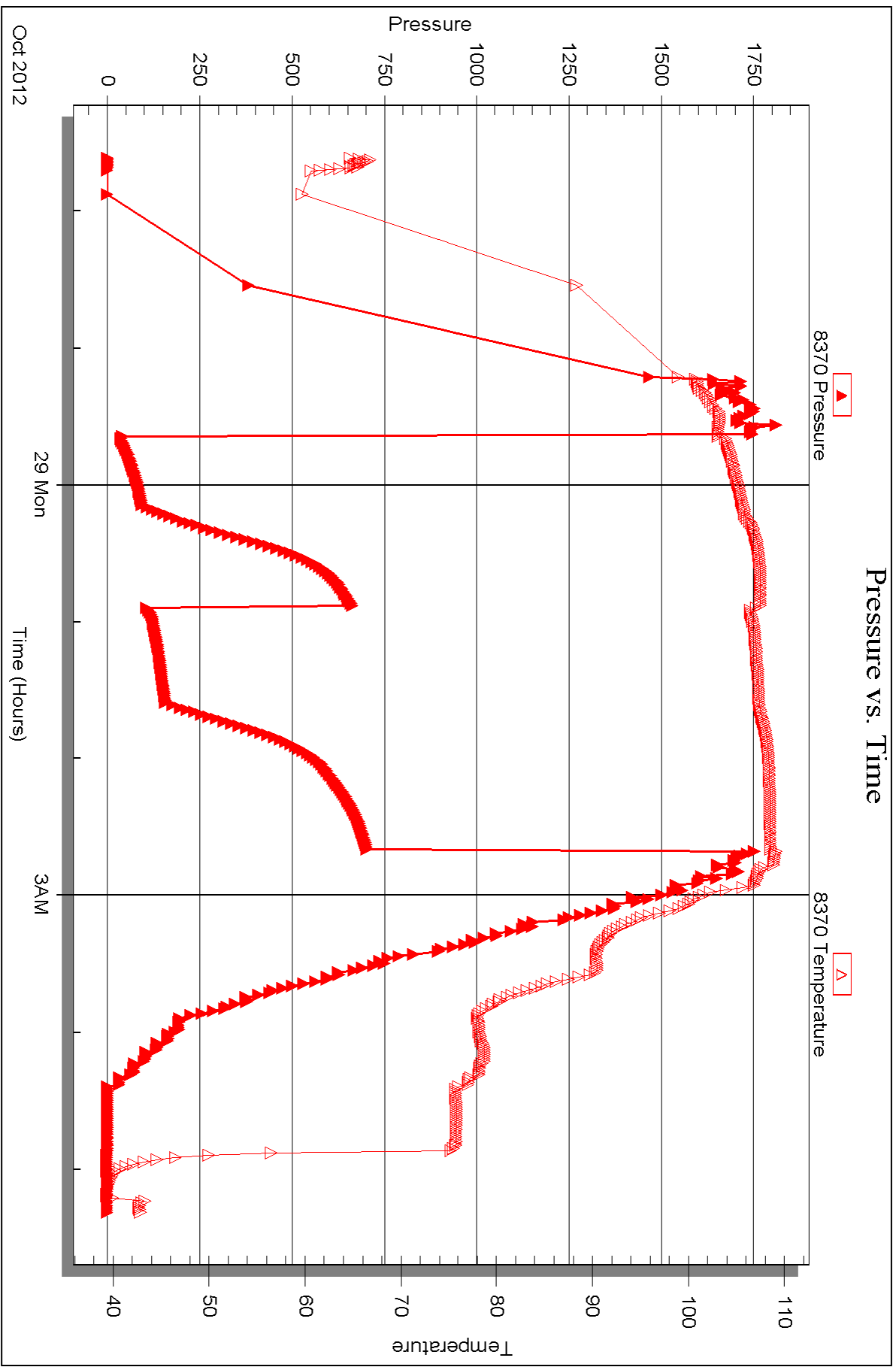


Serial #: 8370

Outside Coral Production Corp.

Keenan #36-1

DST Test Number: 1





DRILL STEM TEST REPORT

Prepared For: **Coral Production Corp.**

1600 Stout St.Ste.1500
Denver CO 80202

ATTN: Tim Lauer

Keenan #36-1

36-21s-14w Stafford,KS

Start Date: 2012.10.29 @ 15:39:03

End Date: 2012.10.29 @ 23:06:48

Job Ticket #: 49728 DST #: 2

Trilobite Testing, Inc

PO Box 362 Hays, KS 67601

ph: 785-625-4778 fax: 785-625-5620

Printed: 2012.11.01 @ 13:56:26



TRILOBITE TESTING, INC.

DRILL STEM TEST REPORT

Coral Production Corp.

36-21s-14w Stafford,KS

1600 Stout St.Ste.1500
Denver CO 80202

Keenan #36-1

Job Ticket: 49728

DST#: 2

ATTN: Tim Lauer

Test Start: 2012.10.29 @ 15:39:03

GENERAL INFORMATION:

Formation: **Lans K - L**

Deviated: No Whipstock: ft (KB)

Time Tool Opened: 17:19:18

Time Test Ended: 23:06:48

Test Type: Conventional Bottom Hole (Reset)

Tester: Gary Pevoteaux

Unit No: 56

Interval: 3595.00 ft (KB) To 3660.00 ft (KB) (TVD)

Reference Elevations: 1937.00 ft (KB)

Total Depth: 3660.00 ft (KB) (TVD)

1927.00 ft (CF)

Hole Diameter: 7.88 inches Hole Condition: Poor

KB to GR/CF: 10.00 ft

Serial #: 8352 Inside

Press @ Run Depth: 29.68 psig @ 3596.00 ft (KB)

Capacity: 8000.00 psig

Start Date: 2012.10.29

End Date:

2012.10.29

Last Calib.:

2012.10.29

Start Time:

15:39:08

End Time:

23:06:47

Time On Btm:

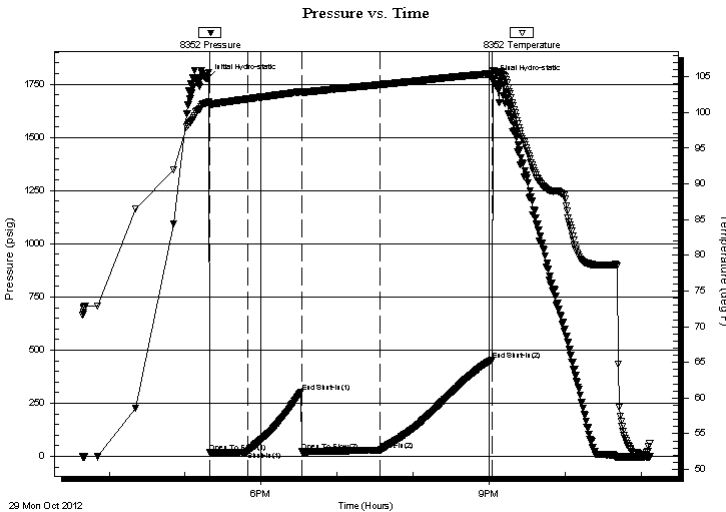
2012.10.29 @ 17:17:33

Time Off Btm:

2012.10.29 @ 21:03:33

TEST COMMENT: IF: Fair blow . Increase to 10".
IS: No blow .
FF: Fair to strong blow . B.O.B. in 35 mins.
FS: No blow .

PRESSURE SUMMARY



Time (Min.)	Pressure (psig)	Temp (deg F)	Annotation
0	1777.21	101.39	Initial Hydro-static
2	18.24	101.05	Open To Flow (1)
32	24.61	101.90	Shut-In(1)
75	302.74	102.92	End Shut-In(1)
75	22.15	102.81	Open To Flow (2)
137	29.68	103.91	Shut-In(2)
225	454.36	105.45	End Shut-In(2)
226	1770.63	105.91	Final Hydro-static

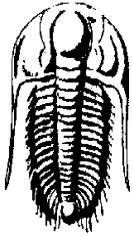
Recovery

Length (ft)	Description	Volume (bbl)
0.00	650P	0.00
45.00	GMCO 16%g 40%m 44%o	0.63
0.00	Clean oil at top of tool	0.00

Gas Rates

	Choke (inches)	Pressure (psig)	Gas Rate (Mcf/d)

* Recovery from multiple tests



TRILOBITE
TESTING, INC.

DRILL STEM TEST REPORT

Coral Production Corp.

36-21s-14w Stafford,KS

1600 Stout St.Ste.1500
Denver CO 80202

Keenan #36-1

Job Ticket: 49728

DST#: 2

ATTN: Tim Lauer

Test Start: 2012.10.29 @ 15:39:03

GENERAL INFORMATION:

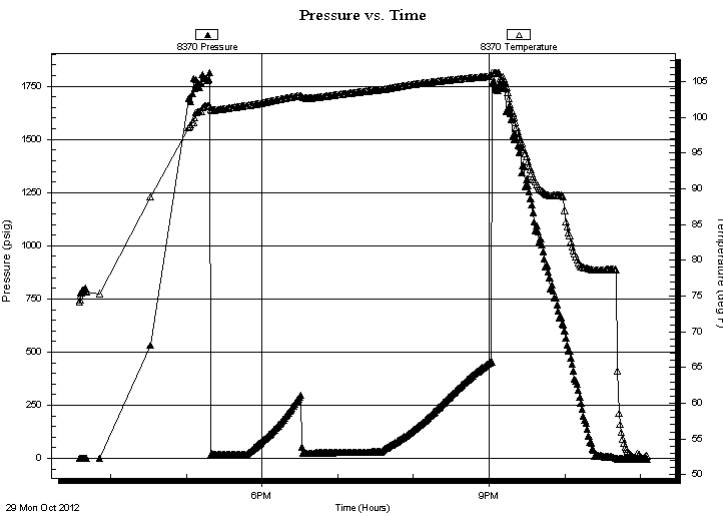
Formation: **Lans K - L**
 Deviated: No Whipstock: ft (KB)
 Test Type: Conventional Bottom Hole (Reset)
 Time Tool Opened: 17:19:18
 Tester: Gary Pevoteaux
 Time Test Ended: 23:06:48
 Unit No: 56
Interval: 3595.00 ft (KB) To 3660.00 ft (KB) (TVD)
 Reference Elevations: 1937.00 ft (KB)
 Total Depth: 3660.00 ft (KB) (TVD)
 1927.00 ft (CF)
 Hole Diameter: 7.88 inches
 Hole Condition: Poor
 KB to GR/CF: 10.00 ft

Serial #: 8370

Outside

Press @ RunDepth: psig @ 3596.00 ft (KB) Capacity: 8000.00 psig
 Start Date: 2012.10.29 End Date: 2012.10.29 Last Calib.: 2012.10.29
 Start Time: 15:35:38 End Time: 23:04:47 Time On Btm:
 Time Off Btm:

TEST COMMENT: IF: Fair blow . Increase to 10".
 IS: No blow .
 FF: Fair to strong blow . B.O.B. in 35 mins.
 FS: No blow .



PRESSURE SUMMARY

Time (Min.)	Pressure (psig)	Temp (deg F)	Annotation

Recovery

Length (ft)	Description	Volume (bbl)
0.00	650P	0.00
45.00	GMCO 16%g 40%m 44%o	0.63
0.00	Clean oil at top of tool	0.00

* Recovery from multiple tests

Gas Rates

Choke (inches)	Pressure (psig)	Gas Rate (Mcf/d)



**TRILOBITE
TESTING, INC.**

DRILL STEM TEST REPORT

TOOL DIAGRAM

Coral Production Corp.

36-21s-14w Stafford,KS

1600 Stout St.Ste.1500
Denver CO 80202

Keenan #36-1

Job Ticket: 49728

DST#: 2

ATTN: Tim Lauer

Test Start: 2012.10.29 @ 15:39:03

Tool Information

Drill Pipe:	Length: 3585.00 ft	Diameter: 3.80 inches	Volume: 50.29 bbl	Tool Weight: 2400.00 lb
Heavy Wt. Pipe:	Length: 0.00 ft	Diameter: 0.00 inches	Volume: 0.00 bbl	Weight set on Packer: 24000.00 lb
Drill Collar:	Length: 0.00 ft	Diameter: 0.00 inches	Volume: 0.00 bbl	Weight to Pull Loose: 63000.00 lb
			<u>Total Volume: 50.29 bbl</u>	Tool Chased 0.00 ft
Drill Pipe Above KB:	10.00 ft			String Weight: Initial 53000.00 lb
Depth to Top Packer:	3595.00 ft			Final 53000.00 lb
Depth to Bottom Packer:	ft			
Interval between Packers:	65.00 ft			
Tool Length:	85.00 ft			
Number of Packers:	2	Diameter: 6.75 inches		

Tool Comments:

Tool Description	Length (ft)	Serial No.	Position	Depth (ft)	Accum. Lengths
------------------	-------------	------------	----------	------------	----------------

C.O. Sub	1.00			3576.00	
Shut in tool	5.00			3581.00	
HMV	5.00			3586.00	
Packer	4.00			3590.00	20.00 Bottom Of Top Packer
Packer	5.00			3595.00	
Stubb	1.00			3596.00	
Recorder	0.00	8352	Inside	3596.00	
Recorder	0.00	8370	Outside	3596.00	
Perforations	5.00			3601.00	
Blank Spacing	31.00			3632.00	
Perforations	23.00			3655.00	
Bullnose	5.00			3660.00	65.00 Bottom Packers & Anchor

Total Tool Length: 85.00



**TRILOBITE
TESTING, INC.**

DRILL STEM TEST REPORT

FLUID SUMMARY

Coral Production Corp.

36-21s-14w Stafford,KS

1600 Stout St.Ste.1500
Denver CO 80202

Keenan #36-1

Job Ticket: 49728

DST#: 2

ATTN: Tim Lauer

Test Start: 2012.10.29 @ 15:39:03

Mud and Cushion Information

Mud Type: Gel Chem

Cushion Type:

Oil API:

deg API

Mud Weight: 9.00 lb/gal

Cushion Length:

ft

Water Salinity:

4000 ppm

Viscosity: 50.00 sec/qt

Cushion Volume:

bbbl

Water Loss: 8.79 in³

Gas Cushion Type:

Resistivity: 0.00 ohm.m

Gas Cushion Pressure:

psig

Salinity: 4000.00 ppm

Filter Cake: 0.20 inches

Recovery Information

Recovery Table

Length ft	Description	Volume bbbl
0.00	650P	0.000
45.00	GMCO 16%g 40%m 44%o	0.631
0.00	Clean oil at top of tool	0.000

Total Length: 45.00 ft Total Volume: 0.631 bbl

Num Fluid Samples: 0

Num Gas Bombs: 0

Serial #: none

Laboratory Name:

Laboratory Location:

Recovery Comments:

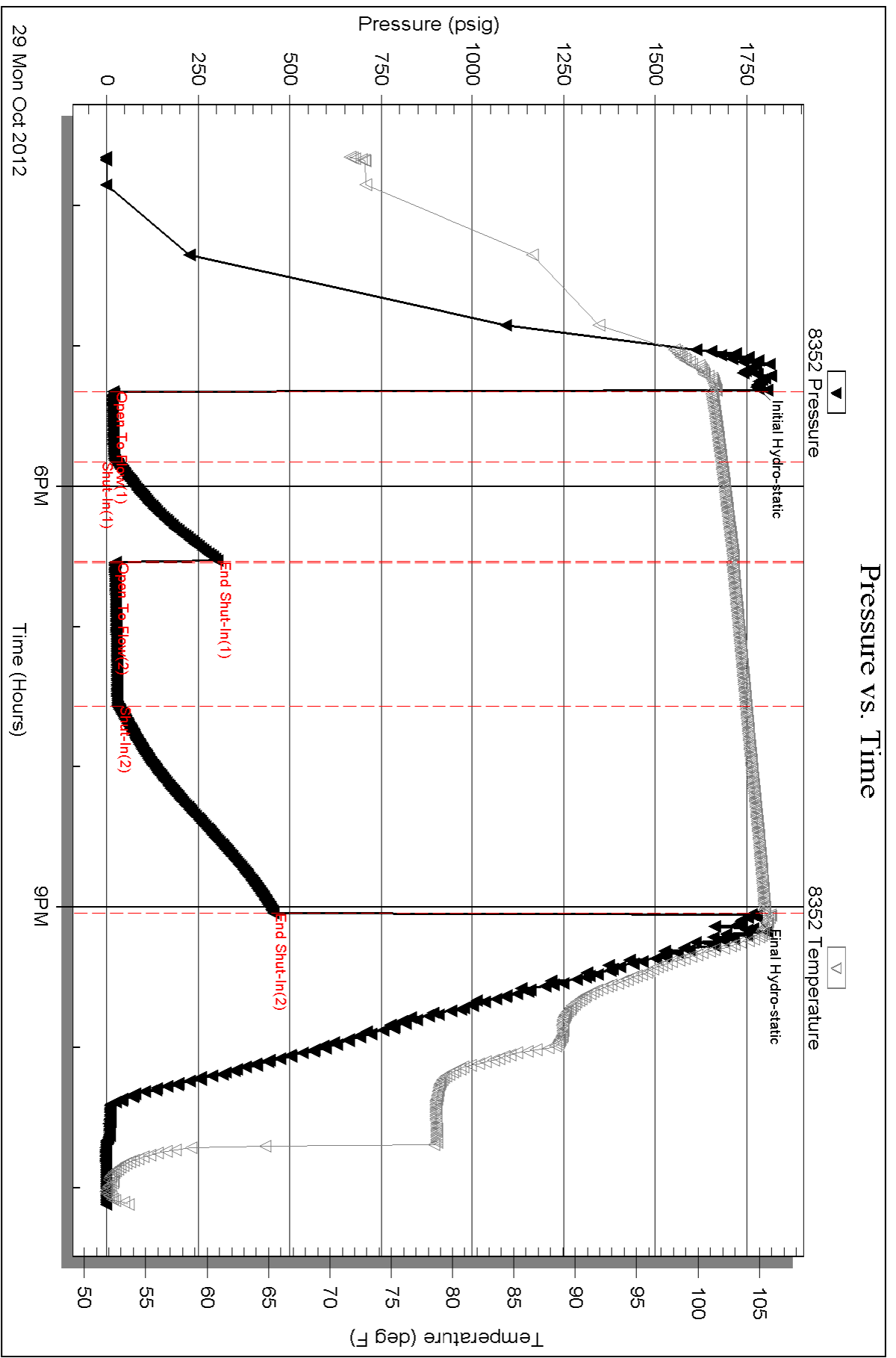
Serial #: 8352

Inside

Coral Production Corp.

Keenan #36-1

DST Test Number: 2



Triobite Testing, Inc

Ref. No: 49728

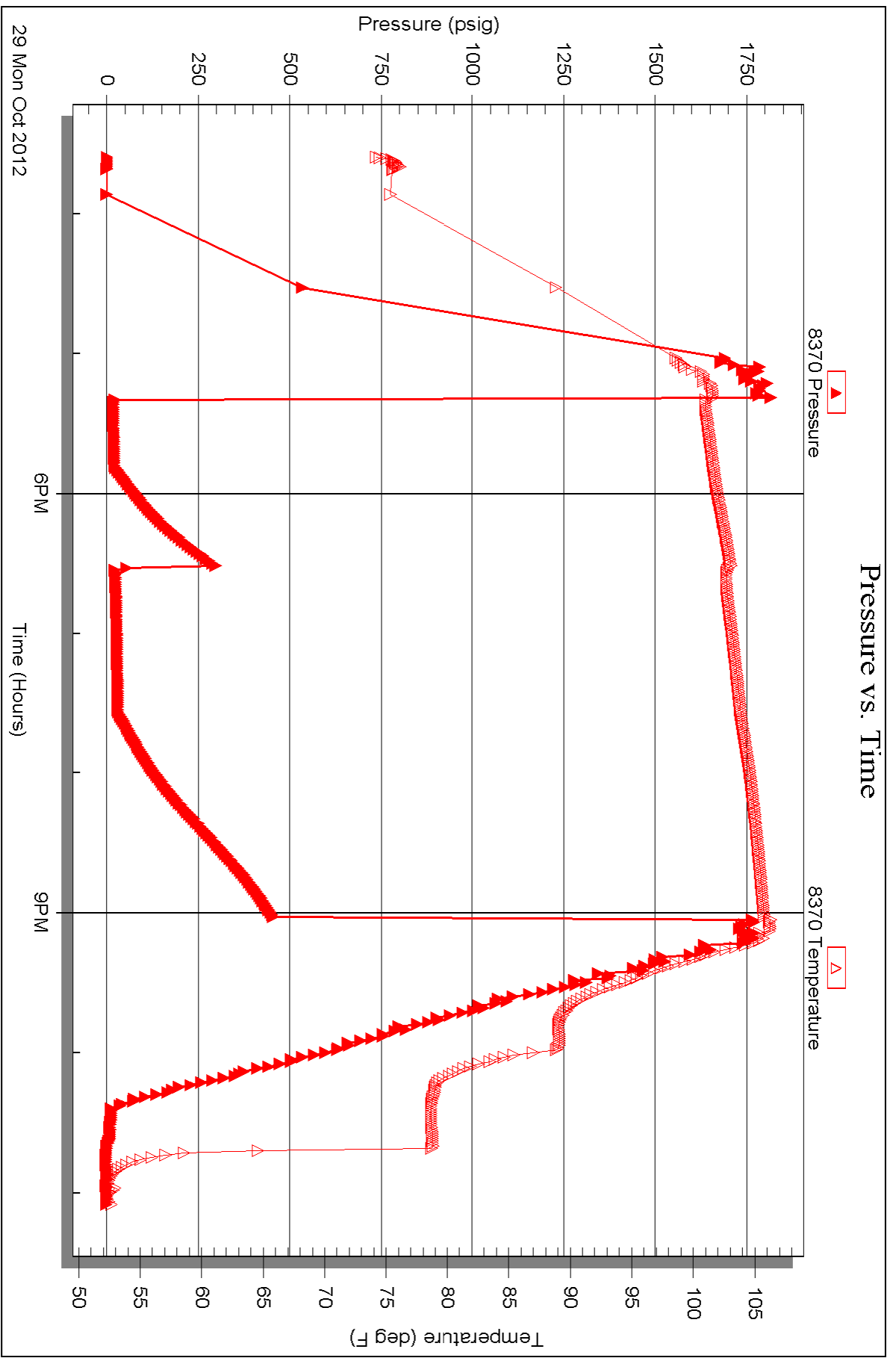
Printed: 2012.11.01 @ 13:56:30

Serial #: 8370

Outside Coral Production Corp.

Keenan #36-1

DST Test Number: 2





TRILOBITE TESTING INC.

P.O. Box 1733 • Hays, Kansas 67601

Test Ticket

NO. 49727

4/10

Well Name & No. KEENAN #36-1 Test No. 1 Date 10-28-12
 Company CORAL PRODUCTION CORP. Elevation 1937 KB 1927 GL
 Address 1600 STOUT ST. SEC. 1300, DENVER CO. 80202
 Co. Rep / Geo. TIM LAUER Rig MAVERICK DRILL #106
 Location: Sec. 36 Twp. 21S Rge. 14W Co. STAFFORD State KS.

Interval Tested 3535 - 3595' Zone Tested LANS 14 IS
 Anchor Length 60' Drill Pipe Run 3532' Mud Wt. 9.1
 Top Packer Depth 3530' Drill Collars Run 0 Vis 53
 Bottom Packer Depth 3535' Wt. Pipe Run 0 WL 10.2cc
 Total Depth 3595' Chlorides 4,000 ppm System LCM 2#

Blow Description IF: Strong blow. B.O.B. in 40 sec. ISI: Weak blow 1/4" or less.

FF: Strong blow. B.O.B. in 20 sec. FSI: Fair blow. 2-9".
GTS 10 seconds in to FSIP. (white bleeding off 2nd open)

Rec	Feet of	%gas	%oil	%water	%mud
<u>65</u>	<u>GOCM</u>	<u>18</u>	<u>28</u>	<u>54</u>	
<u>235</u>	<u>GMCO</u>	<u>32</u>	<u>41</u>	<u>27</u>	
<u>75</u>	<u>CEO</u>	<u>16</u>	<u>84</u>		

Rec Total 375 Fluid BHT 109° Gravity 24.5 API RW N.C. @ ~ °F Chlorides 4,000 ppm

(A) Initial Hydrostatic 1741 Test 1150 T-On Location 2050
 (B) First Initial Flow 34 Jars T-Started 2139
 (C) First Final Flow 94 Safety Joint T-Open 2338
 (D) Initial Shut-In 661 Circ Sub T-Pulled 0236
 (E) Second Initial Flow 103 Hourly Standby T-Out 0520
 (F) Second Final Flow 156 Mileage 92 127.10 Comments _____
 (G) Final Shut-In 701 Sampler _____
 (H) Final Hydrostatic 1738 Straddle _____

Initial Open 30 Shale Packer _____
 Initial Shut-In 45 Shale Packer _____
 Final Flow 45 Extra Packer _____
 Final Shut-In 60 Extra Recorder _____
 Sub Total 1277.10 Day Standby _____
 Total 1277.10 Accessibility _____
 MP/DST Disc't _____

Approved By Tim J. Lauer Our Representative Gary D. Watson
 Trilobite Testing Inc. shall not be liable for damaged of any kind of the property or personnel of the one for whom a test is made, or for any loss suffered or sustained, directly or indirectly, through the use of its equipment, or its statements or opinion concerning the results of any test, tools lost or damaged in the hole shall be paid for at cost by the party for whom the test is made.



TRILOBITE TESTING INC.

P.O. Box 1733 • Hays, Kansas 67601

Test Ticket

NO. 49728

Well Name & No. KEENAN # 36-1 Test No. 2 Date 10-29-12
 Company CORAL PRODUCTION CORP. Elevation 1937 KB 1927 GL
 Address 1600 STOUT ST. STE. 1500, DENVER CO. 80202
 Co. Rep / Geo. TIM LAUER Rig MAVERICK DRILG # 106
 Location: Sec. 36 Twp. 21 S Rge. 14 W Co. STAFFORD State KS

Interval Tested 3595 ~ 3660' Zone Tested LANS. K-L
 Anchor Length 65' Drill Pipe Run 3585' Mud Wt. 9.1
 Top Packer Depth 3590' Drill Collars Run 0 Vis 50
 Bottom Packer Depth 3595' Wt. Pipe Run 0 WL 8.8 cc
 Total Depth 3660' Chlorides 4,000 ppm System LCM 2#
 Blow Description IF: Fair blow. Increase to 10". ISI, No blow.

FF: Fair to strong blow. B.O.B. in 35 mins. FSI'd. blow.

Rec	Feet of	%gas	%oil	%water	%mud
<u>650</u>	<u>Gas in pipe</u>				
<u>45</u>	<u>GMCO</u>	<u>16</u>	<u>44</u>		<u>40</u>
	<u>Clean oil @ top of tool</u>				

Rec Total 45 Fluid BHT 105° Gravity N/A API RW A/C @ - °F Chlorides 4,000 ppm

(A) Initial Hydrostatic 1777 Test 1150 T-On Location 1523
 (B) First Initial Flow 18 Jars T-Started 1539
 (C) First Final Flow 25 Safety Joint T-Open 1719
 (D) Initial Shut-In 303 Circ Sub T-Pulled 2104
 (E) Second Initial Flow 22 Hourly Standby T-Out 2306

(F) Second Final Flow 30 Mileage (82) x 2 HAD TO 254.20
 Comments GO LOAD AFTER LEAVING TOOLS FOR ARBUCKLE TEST.

(G) Final Shut-In 454 Sampler GO LOAD AFTER LEAVING TOOLS FOR ARBUCKLE TEST.
 (H) Final Hydrostatic 1771 Straddle Ruined Shale Packer

Shale Packer Ruined Packer

Initial Open 30 Extra Packer Extra Copies

Initial Shut-In 45 Extra Recorder Sub Total 0

Final Flow 60 Day Standby Total 1404.20

Final Shut-In 90 Accessibility MP/DST Disc't

Sub Total 1404.20
 Approved By Tim J. Lauer Representative Corey P. Wolcott

TriLOBITE Testing Inc. shall not be liable for damaged of any kind of the property or personnel of the one for whom a test is made, or for any loss suffered or sustained, directly or indirectly, through the use of its equipment, or its statements or opinion concerning the results of any test, tools lost or damaged in the hole shall be paid for at cost by the party for whom the test is made.