



**TRILOBITE
TESTING, INC.**

DRILL STEM TEST REPORT

Russell Oil, Inc.
POB 8050
Edmond, OK 73083
ATTN: Kitt Noah

S35-10s-34w Thomas, KS
Hazel Russell #1-35
Job Ticket: 50008 **DST#: 5**
Test Start: 2012.08.28 @ 22:36:26

GENERAL INFORMATION:

Formation: **Lower Johnson**
Deviated: No Whipstock: ft (KB)
Time Tool Opened: 01:04:36
Time Test Ended: 06:06:05
Interval: **4723.00 ft (KB) To 4744.00 ft (KB) (TVD)**
Total Depth: 4744.00 ft (KB) (TVD)
Hole Diameter: 7.88 inches Hole Condition: Good
Test Type: Conventional Bottom Hole (Initial)
Tester: Tate Lang
Unit No: 62
Reference Elevations: 3240.00 ft (KB)
3229.00 ft (CF)
KB to GR/CF: 11.00 ft

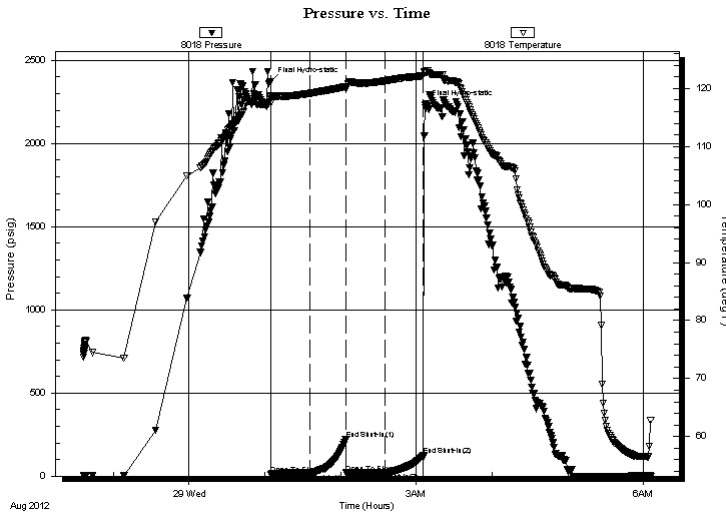
Serial #: 8018

Inside

Press @ Run Depth: 20.43 psig @ 4724.00 ft (KB) Capacity: 8000.00 psig
Start Date: 2012.08.28 End Date: 2012.08.29 Last Calib.: 2012.08.29
Start Time: 22:36:27 End Time: 06:06:06 Time On Btm:
Time Off Btm: 2012.08.29 @ 01:04:26

TEST COMMENT: IF-Weak Surface Blow Died Out In 19 mins.
ISI-Dead No Return
FF-Dead No Blow
FSI-Dead No Return

PRESSURE SUMMARY



Time (Min.)	Pressure (psig)	Temp (deg F)	Annotation
0	2372.51	118.76	Final Hydro-static
1	11.80	117.46	Open To Flow (1)
32	19.45	119.12	Shut-In(1)
60	221.74	120.26	End Shut-In(1)
60	19.73	120.13	Open To Flow (2)
91	20.43	121.27	Shut-In(2)
121	124.79	122.17	End Shut-In(2)
123	2231.15	122.68	Final Hydro-static

Recovery

Length (ft)	Description	Volume (bbl)
5.00	100%M	0.02

Gas Rates

Choke (inches)	Pressure (psig)	Gas Rate (Mcf/d)



**TRILOBITE
TESTING, INC.**

DRILL STEM TEST REPORT

FLUID SUMMARY

Russell Oil, Inc.

S35-10s-34w Thomas, KS

POB 8050
Edmond, OK 73083

Hazel Russell #1-35

Job Ticket: 50008 **DST#: 5**

ATTN: Kitt Noah

Test Start: 2012.08.28 @ 22:36:26

Mud and Cushion Information

Mud Type: Gel Chem	Cushion Type:	Oil API:	deg API
Mud Weight: 9.00 lb/gal	Cushion Length: ft	Water Salinity:	ppm
Viscosity: 55.00 sec/qt	Cushion Volume: bbl		
Water Loss: 7.19 in ³	Gas Cushion Type:		
Resistivity: ohm.m	Gas Cushion Pressure: psig		
Salinity: 6000.00 ppm			
Filter Cake: 1.00 inches			

Recovery Information

Recovery Table

Length ft	Description	Volume bbl
5.00	100%M	0.025

Total Length: 5.00 ft Total Volume: bbl

Num Fluid Samples: 0 Num Gas Bombs: 0 Serial #:

Laboratory Name: Laboratory Location:

Recovery Comments:

