

AUSTIN B. KLAUS



Cell 785.650.3629
Work 785.483.3145
Ext 225

PO BOX 352
Russell, KS 67665
austin.klaus@johnofarmer.com

Scale 1:240 (5"=100') Imperial
Measured Depth Log

Well Name: A. Wasinger #8
Location: Ellis County
License Number: API #15-051-26,361-0000
Spud Date: 8/7/2012
Surface Coordinates: 780' FSL & 1915' FEL
Bottom Hole Coordinates: Section 15 - Township 15 South - Range 18 West
Vertical well with minimal deviation, same as above
Ground Elevation (ft): 2016' K.B. Elevation (ft): 2024'
Logged Interval (ft): 2950' To: RTD Total Depth (ft): RTD: 3680' LTD: 3681'
Formation: Topeka-Arbuckle
Type of Drilling Fluid: Chemical (Andy's)

Region: Kansas

Drilling Completed: 8/13/2012

Printed by STRIP.LOG from WellSight Systems 1-800-447-1534 www.WellSight.com

OPERATOR


Company: John O. Farmer, Inc.
Address: P.O. Box 352
Russell, KS 67665-0352

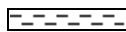



COMMENTS




The A. Wasinger #8 well was drilled by Discovery Drilling Rig #4 (Tool Pusher: Mike Gaschler).

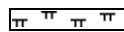

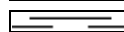
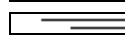
The location for the A. Wasinger #8 was found via 3-D seismic survey. Based on the evaluation of the logs run and the samples collected, the decision was made to set 5 1/2" production casing on 8/13/2012 to further evaluate the A. Wasinger #8 well.

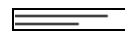



ROCK TYPES

-  Anhy
-  Bent
-  Brec
-  Cht







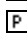
-  Clyst
-  Coal
-  Congl
-  Dol

-  Gyp
-  Igne
-  Lmst
-  Meta

-  Mrlst
-  Salt
-  Shale
-  Shcol


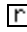
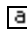

-  Shgy
-  Sltst
-  Ss
-  Till

OTHER SYMBOLS


- POROSITY**
-  Earthy
 -  Fenest
 -  Fracture
 -  Inter
 -  Moldic
 -  Organic
 -  Pinpoint

Vuggy

- SORTING**
-  Well
 -  Moderate
 -  Poor

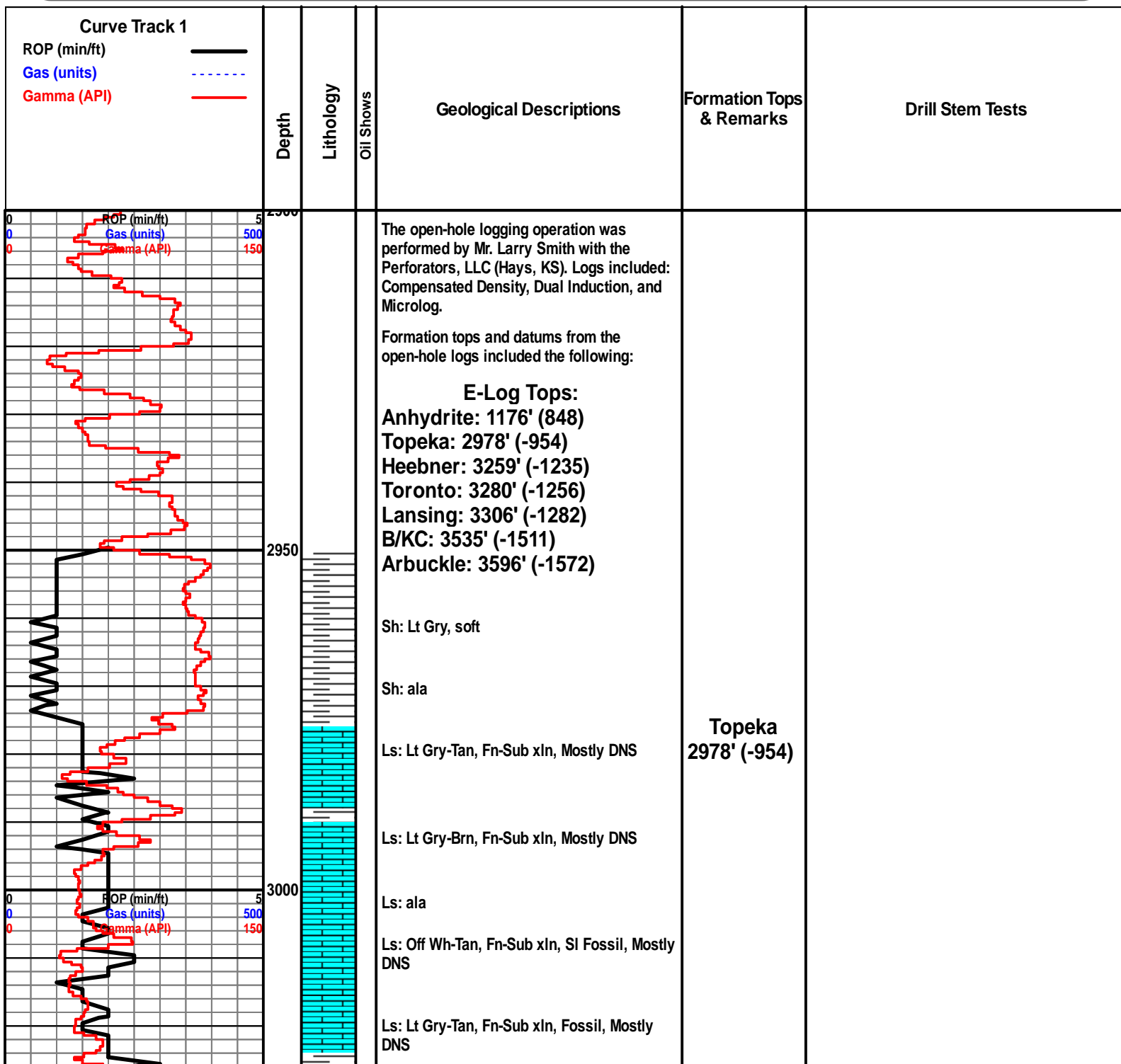
- ROUNDING**
-  Rounded
 -  Subrnd
 -  Subang
 -  Angular

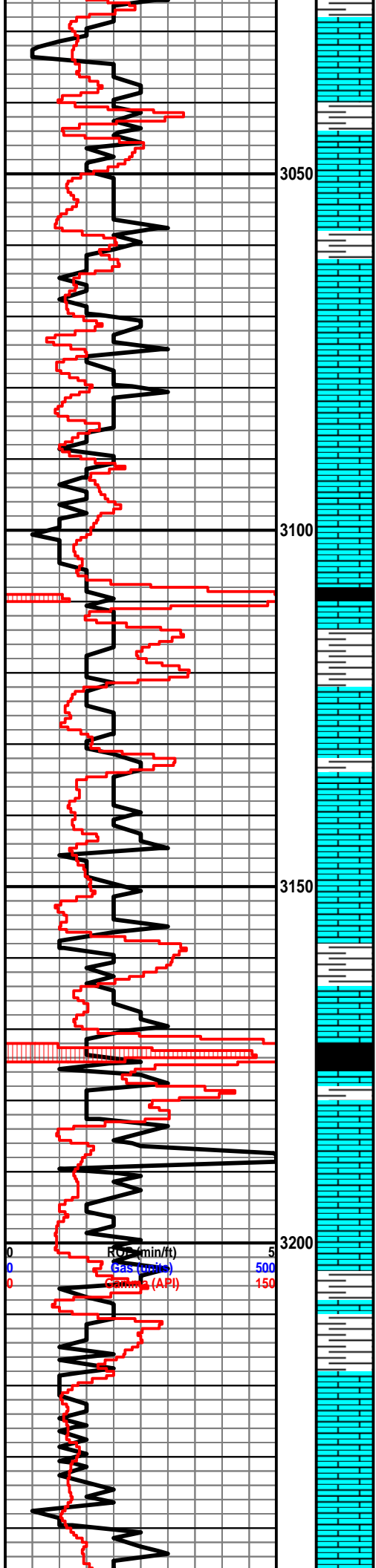
- OIL SHOW**
-  Even

-  Spotted
-  Ques
-  Dead

- EVENT**
-  Rft
 -  Sidewall

- INTERVAL**
-  Core
 -  Dst





Ls: ala

3050 Ls: Tan-Lt Gry, Fn xIn, Mostly DNS, Fossil

Ls: Tan-Lt Gry, Fn-Sub xIn, Hvy Fossil, Hvy Chert-Off Wh, Mostly DNS

Ls: ala

3100 Ls: Brn-Tan, Fn xIn, Scat Int xIn porosity, NSFO, No Odor

Sh: Gry-Drk Gry

Sh: Gry

Ls: Lt Gry-Tan, Fn-Sub xIn, Scat-Poor Pinpoint & Int xIn porosity, NSFO, No Odor

Ls: ala

3150 Ls: Off Wh-Lt Gry, Fn xIn, Mostly DNS, Chert-Off Wh

Ls: ala

Sh: Drk Gry-Blk

Ls: Gry-Tan-Brn, Fn xIn, Mostly DNS, Fossil, Chert-off wh

Ls: Tan-Lt Gry, Fn-Sub xIn, Mostly DNS, Fossil

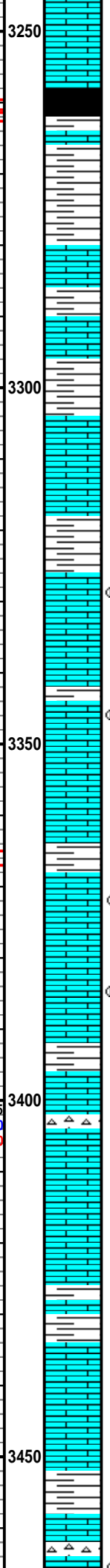
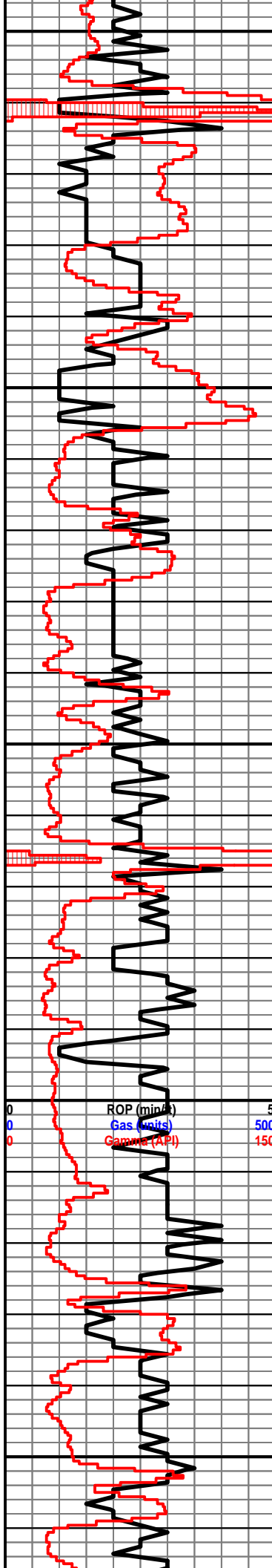
3200

Sh: Gry-Grn

Ls: Off Wh-Tan, Fn xIn w/ Scat-Poor Int xIn, porosity, Fossil, Chert-Off Wh, NSFO, No Odor

Ls: Off Wh-Lt Gry, Fn xIn, w/ Scat Int xIn & Fossil porosity, Lt oil st in porosity, NSFO, Fair Odor

ROF (min/ft) 5
Gas (units) 500
Gamma (API) 150



Ls: Tan-Drk Gry, Fn-Sub xln, Mostly DNS

Sh: Blk, Carb

Sh: Drk Gry-Brn-Grn, Soft

Ls: Lt Gry-Tan, Fn xln w/ Scat PP porosity, Chalky, Lt oil st in porosity, NSFO, SI odor

Sh: Drk Gry-Brn

Ls: Off Wh-Tan, Fn xln w/ Scat PP & Poor int xln porosity, Lt oil st, NSFO, No Odor, Chalky

Sh: Gry-Brn-Grn, soft

Ls: Tan-Lt Gry, Fn xln w/ Scat PP Vuggy porosity, Lt oil st in porosity, SSFO, SI Odor

Ls: Off Wh-Tan, Fn xln w/ Scat PP Vuggy & Poor Int Fossil porosity, Lt oil st in porosity, VSSFO, Fair Odor

Ls: Tan-Off Wh, Fn xln, Fossil w/ Poor Fossil porosity, Lt Oil st scat, Hvy Chert-Off wh, Chalky, VSSFO, SI Odor, Mostly DNS, Scat PP Vuggy porosity

Ls: Off Wh-Tan, Fn xln, Few Pcs ool, Scat PP & Int xln porosity, Lt-Fr oil st in porosity, SSFO, Fair Odor

Ls: Off Wh-Tan, Fn xln, ool w/ Fair oom porosity, Lt oil st, SSFO, Fr Odor

Sh: Drk Gry-Brn

Ls: Tan-Brn, Fn-Sub xln, Mostly DNS, SI Chert-Off Wh, SI Chalky

Ls: ala

Sh: Gry-Drk Gry

Ls: Tan-Lt Gry, Fn-Sub xln, Mostly DNS, Chert-Off Wh

Sh: Drk Gry-Grn

Ls: Off Wh-Tan, Fn xln w/ Scat PP Vuggy porosity, Fair oil st Scat, SSFO, SI Odor

Heebner
3258'(-1234)

Toronto
3278'(-1254)

Lansing
3305'(-1281)

A

B

C

D

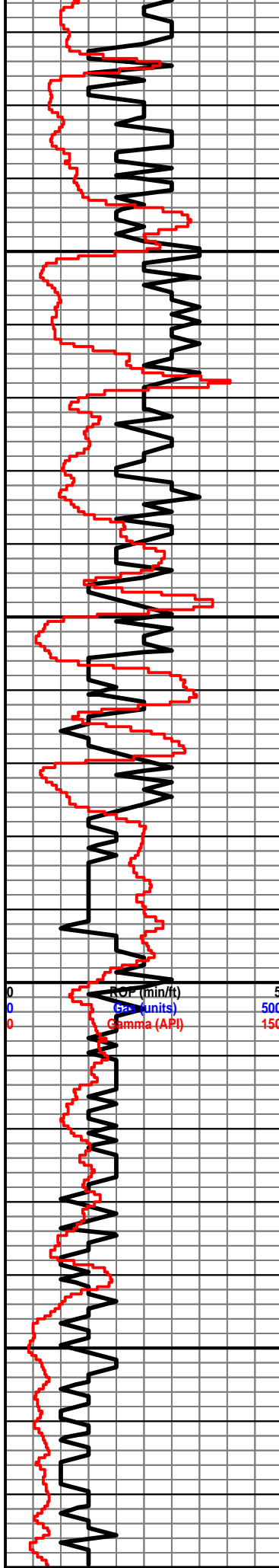
E

F

G

H

I



Hvy Chert-Off Wh

● Ls: Off Wh-Tan, Fn xln w/ Fair PP Vuggy porosity, Lt-Fr oil st in porosity, SSFO, SI Odor

○ Ls: Off Wh-Tan, Fn-Sub xln, Mostly DNS, Barren

Sh: Drk Gry

3500

Ls: Off Wh-Tan, Fn-Sub xln, Mostly DNS, Barren, Chalky, Chert-Off Wh

K

Sh: Drk Gry-Brn-Grn, soft

Ls: Off Wh-Tan, Fn-Sub xln, Mostly DNS, Barren

L

Ls: ala

Sh: Drk Gry-Brn-Grn, Mott.

B/KC
3534'(-1510)

3550

Sh: ala

Ls: Off Wh-Lt Gry, Fn-Sub xln, Mostly DNS

Congl: Maroon, DNS

Ls: Off Wh-Lt Gry, Fn-Sub xln, Mostly DNS, Chert-Off Wh

Sh: Gry-Brn-Grn, soft

3600

● Dolo: Off Wh-Brn, Fn-Md xln, Poor-Fair Int xln porosity, Fair oil st, Dull Yel Fluor, SSFO-FSFO, Fair Odor

○ Dolo: Off Wh-Tan, Fn-Md Sucr xln w/ poor int xln porosity, Lt Oil St in porosity, VSSFO, Lt Odor

● Dolo: Off Wh-Brn, Fn-Md Sucr xln w/ Fair-Good int xln porosity, Sat oil st, SSFO, Fair-Good Odor

Dolo: Off Wh, Fn-Md xln w/ poor Int xln porosity, Lt-Fr oil st, VSSFO, SI Odor

36

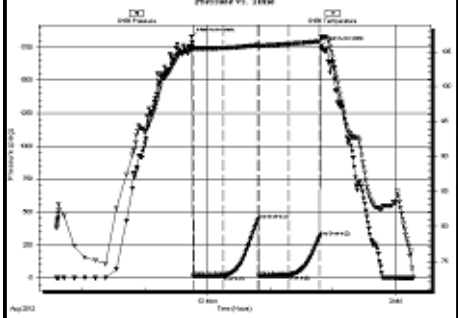
● Dolo: Off Wh-Tan, Fn-Md Sucr xln w/ fr int xln porosity, Lt-Fr oil st, SSFO, Fair Odor

○ Dolo: Off Wh, Fn-Md xln w/ poor int xln porosity, Lt oil st in fw pcs, VSSFO, SI Odor

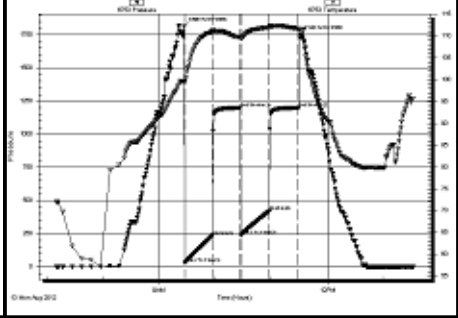
Dolo: Off Wh-Wh, Fn-Md xln, Mostly DNS, Barren, Chert-Off Wh

Arbuckle
3596'(-1572)

DST #1 3,577'-3,617' Top 20' of Arbuckle
30"-30"-30"-30"
IF: weak blow, died in 28 minutes
FF: no blow
Rec: 5' Oil Spotted Mud
FP: 14-15, 16-17#
SIP: 441-316#
HP: 1,829-1,762#
BHT: 107



DST #2 3,617'-3,650' 20-53' into Arbuckle
30"-30"-30"-30"
IF: BOB in 5.5 minutes, no blow back
FF: BOB in 6 minutes, no blow back
Rec: 240' Muddy Water (15% M, 85% W)
655' Water (Chl. 4K)
FP: 29-234, 239-421#
SIP: 1,198-1,198#
HP: 1,813-1,752#
BHT: 112



RTD
3680'(-1656)