



**TRILOBITE
TESTING, INC.**

DRILL STEM TEST REPORT

Woolsey Oper. Co. LLC.
125 N. Market Ste. 1000
Wichita, KS 67202-1729
ATTN: Roger Fisher

25-28s-6w

Kostner "B" #2

Job Ticket: 49535

DST#: 2

Test Start: 2012.08.12 @ 02:20:37

GENERAL INFORMATION:

Formation: **Mississippian**
 Deviated: No Whipstock: ft (KB)
 Time Tool Opened: 04:03:22
 Time Test Ended: 10:26:37
 Interval: **3860.00 ft (KB) To 3896.00 ft (KB) (TVD)**
 Total Depth: 3896.00 ft (KB) (TVD)
 Hole Diameter: 7.88 inches Hole Condition: Fair
 Test Type: Conventional Bottom Hole (Reset)
 Tester: Ryan Reynolds
 Unit No: 63
 Reference Elevations: 1428.00 ft (KB)
 1418.00 ft (CF)
 KB to GR/CF: 10.00 ft

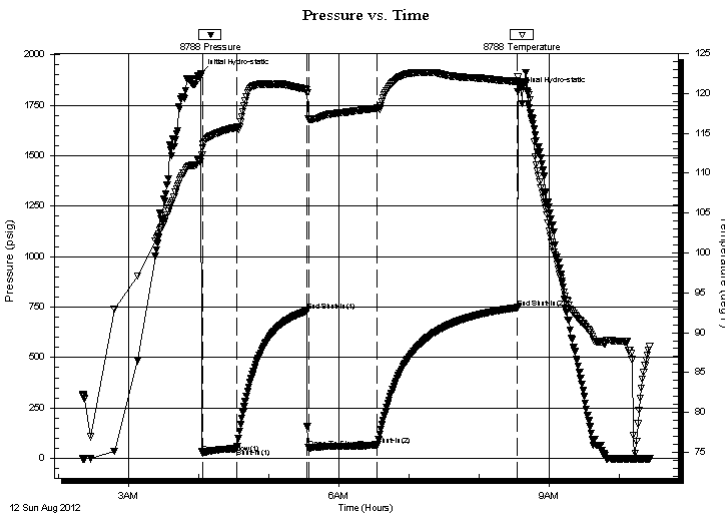
Serial #: 8788

Inside

Press @ Run Depth: 67.71 psig @ 3861.00 ft (KB) Capacity: 8000.00 psig
 Start Date: 2012.08.12 End Date: 2012.08.12 Last Calib.: 2012.08.12
 Start Time: 02:20:42 End Time: 10:26:36 Time On Btm: 2012.08.12 @ 04:02:07
 Time Off Btm: 2012.08.12 @ 08:33:07

TEST COMMENT: IF: Strong blow . BOB in 1 min.
 IS: No blow
 FF: Strong blow . BOB 15sec. GTS @ 37min.
 FS: Weak 1/2" BB

PRESSURE SUMMARY



Time (Min.)	Pressure (psig)	Temp (deg F)	Annotation
0	1905.48	111.41	Initial Hydro-static
2	26.53	113.18	Open To Flow (1)
31	49.41	115.74	Shut-In(1)
91	730.38	120.48	End Shut-In(1)
92	49.39	116.70	Open To Flow (2)
151	67.71	118.13	Shut-In(2)
271	746.96	121.52	End Shut-In(2)
271	1818.61	122.05	Final Hydro-static

Recovery

Length (ft)	Description	Volume (bbl)
60.00	GOCM 20%gas 24%oil 56%mud	0.30
60.00	OGCM 4%oil 10%gas 86%mud	0.31
20.00	SLI OCM 2%oil 98%mud	0.28

* Recovery from multiple tests

Gas Rates

	Choke (inches)	Pressure (psig)	Gas Rate (Mcf/d)
First Gas Rate	0.13	3.50	6.70
Last Gas Rate	0.13	3.50	6.70
Max. Gas Rate	0.13	3.50	6.70



**TRILOBITE
TESTING, INC.**

DRILL STEM TEST REPORT

FLUID SUMMARY

Woolsey Oper. Co. LLC.

25-28s-6w

125 N. Market Ste. 1000
Wichita, KS 67202-1729

Kostner "B" #2

Job Ticket: 49535

DST#: 2

ATTN: Roger Fisher

Test Start: 2012.08.12 @ 02:20:37

Mud and Cushion Information

Mud Type: Gel Chem

Cushion Type:

Oil API:

deg API

Mud Weight: 9.00 lb/gal

Cushion Length:

ft

Water Salinity:

4000 ppm

Viscosity: 48.00 sec/qt

Cushion Volume:

bbbl

Water Loss: 9.18 in³

Gas Cushion Type:

Resistivity: ohm.m

Gas Cushion Pressure:

psig

Salinity: 4000.00 ppm

Filter Cake: 0.02 inches

Recovery Information

Recovery Table

Length ft	Description	Volume bbbl
60.00	GOCM 20%gas 24%oil 56%mud	0.295
60.00	OGCM 4%oil 10%gas 86%mud	0.313
20.00	SLI OCM 2%oil 98%mud	0.281

Total Length: 140.00 ft

Total Volume: 0.889 bbl

Num Fluid Samples: 1

Num Gas Bombs: 1

Serial #: RR-1

Laboratory Name: Caraway

Laboratory Location: Liberal, KS

Recovery Comments:



**TRILOBITE
TESTING, INC.**

DRILL STEM TEST REPORT

GAS RATES

Woolsey Oper. Co. LLC.

25-28s-6w

125 N. Market Ste. 1000
Wichita, KS 67202-1729

Kostner "B" #2

Job Ticket: 49535

DST#: 2

ATTN: Roger Fisher

Test Start: 2012.08.12 @ 02:20:37

Gas Rates Information

Temperature: 59 (deg F)
Relative Density: 0.65
Z Factor: 0.8

Gas Rates Table

Flow Period	Elapsed Time	Choke (inches)	Pressure (psig)	Gas Rate (Mcf/d)
2	40	0.13	3.50	6.70
2	40	0.13	3.50	6.70
2	40	0.13	3.50	6.70

Serial #: 8788

Inside

Woodsey Oper. Co. LLC.

Kostner "B" #2

DST Test Number: 2

Pressure vs. Time

