



Woolsey Operating Company, LLC
 Scale 1:240 (5"=100') Imperial
 Measured Depth Log

Well Name: Kostner GU B#2
 Location: S/2-SW-SW/4 Section 25 T28S-R6W
 License Number: API: 15-095-22262-00-00
 Spud Date: Aug. 2, 2012
 Surface Coordinates: 330' FSL & 660' FWL Section 25 T28S-R6W
 Region: Kingman Co, KS
 Drilling Completed: Aug 14, 2012

Bottom Hole Coordinates:
 Ground Elevation (ft): 1418' K.B. Elevation (ft): 1428'
 Logged Interval (ft): 2500 To: TD Total Depth (ft): 4403
 Formation:
 Type of Drilling Fluid: Chemical Displaced at 2500'

Printed by WellSight Log Viewer from WellSight Systems 1-800-447-1534 www.WellSight.com

OPERATOR

Company: Woolsey Operating Company, LLC
 Address: 125 N. Market, Suite 1000
 Wichita, KS 67202

GEOLOGIST





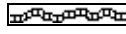

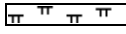

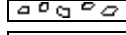


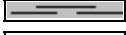
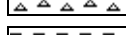

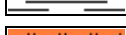
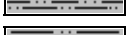
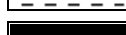






Name: Roger L. Fisher
 Company: Consulting Geologist
 Address: 1928 N. Garland
 Wichita Kansas, 67203

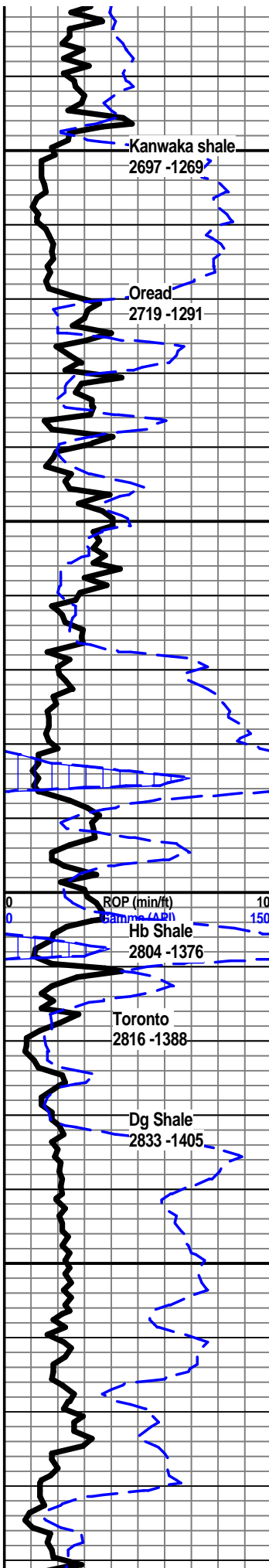
COMMENTS

Surface Casing: 287' of 10 1/2"
 Production Casing: 4402' of 4 1/2"
 Hardt Drilling Rig
 Gas Detector: Woolsey Operating Lab
 Mud System: Mud Co
 OH Logs: Superior Wireline; DILL, CDL/CNL/PE

Pipe was run to further test

ROCK TYPES

| | | | |
|--|--|---|--|
|  Anhy |  Congl |  Lmst |  Black sh |
|  Bent |  Sdy dolo |  Mrlst |  Gry sh |
|  Brec |  Shy dolo |  Salt |  Shale |
|  Cht |  Dol |  Shale |  Shysltst |
|  Clyst |  Gyp |  Sltst |  Sltsh |
|  Coal |  Sdy lmst |  Ss | |



2700

2750

2800

2850

Kanwaka Shale 2696 -1269

Oread 2719 -1291

Shale Black dark gray

Ls tan fxlIn dense sli foss No vis porosity N.S.

Hb Shale 2804 -1376

Shale Black

Ls tan vfxIn dense sli foss N.S.

Shale light green gray reddish brown

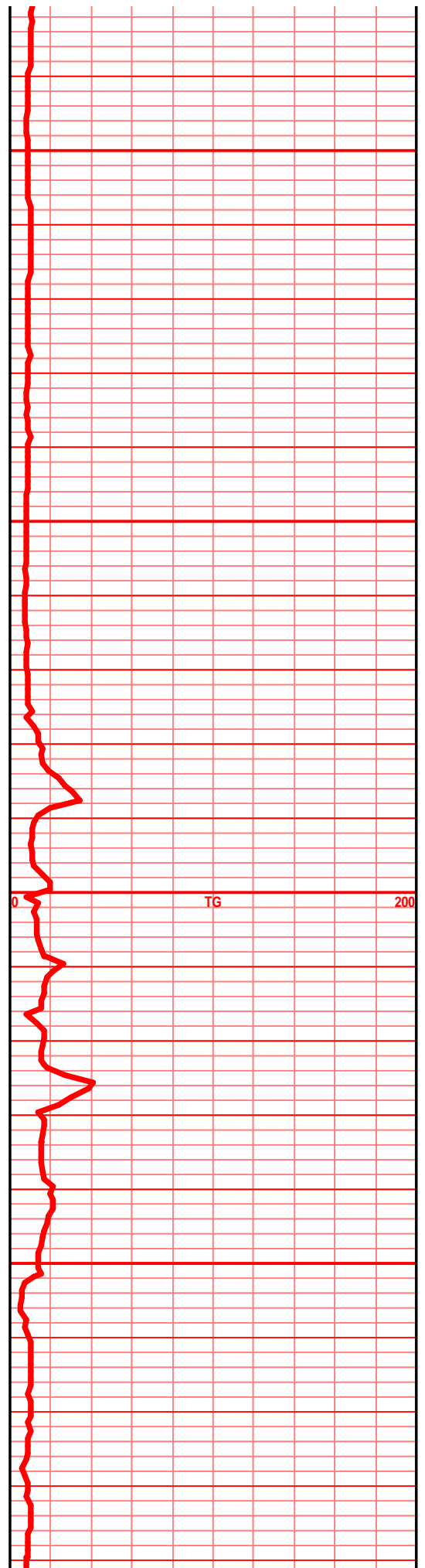
Ls gray f-mxIn sli foss scattered fair int xln porosity chalky N.S.

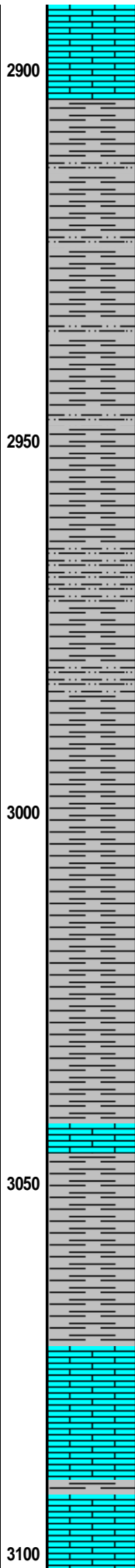
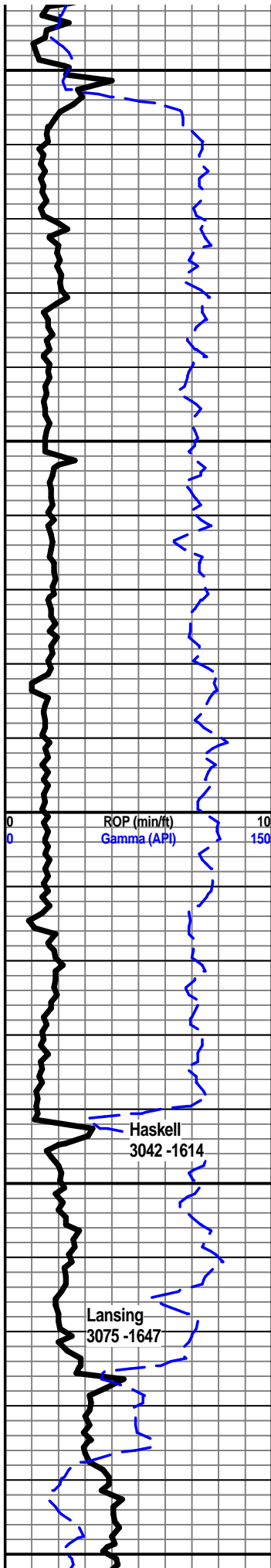
Ls white vf-mxIn foss some recrystalized chert few vugs mostly poor int xln por No Flor or Odor Sli stain on edge

Shale gray mica silty sandy vfine grain friable N.S.

Shale gray light green silty sandy mica shale inclusions N.S.

Ls gray vfxIn dense N.S.





Ls light tan vfxln foss vuggy sli cherty foss fragments poor pin point porosity Scattered fair int foss porosity N.S.

Shale light gray to med gray silty mica sli sandy

Shale light gray to med gray silty mica some sandy shale inclusions

Shale light to med gray silty sandy mica shale inclusions

Shale light to med gray silty mica shale inclusions

Shale light to med gray gray silty

Shale light to med gray silty

Haskell 3042 -1611

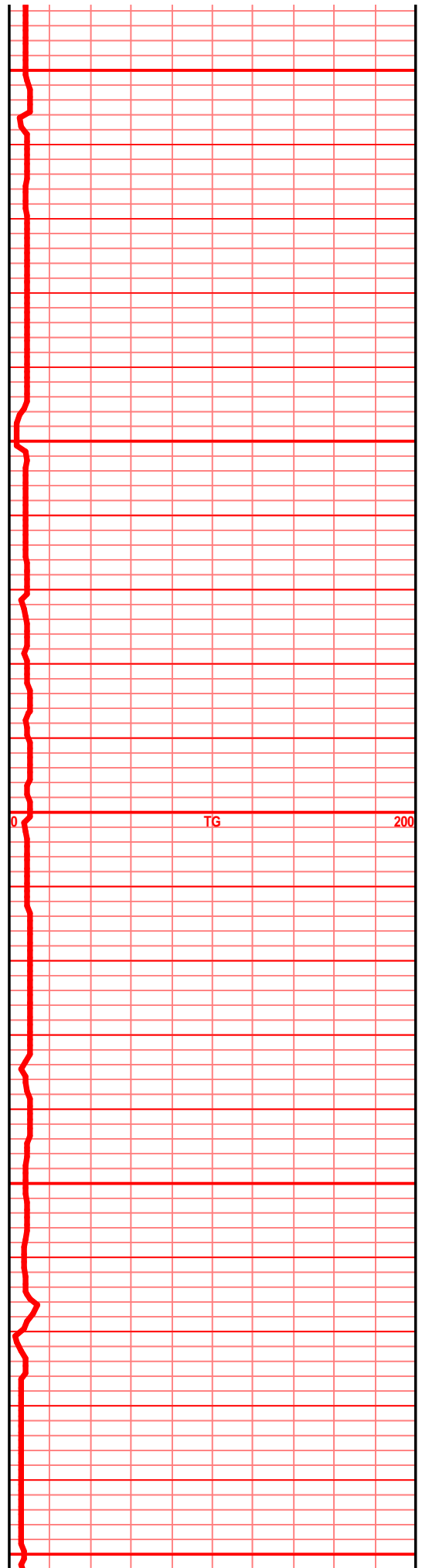
Ls tan vfxln sli foss dense cherty N.S.

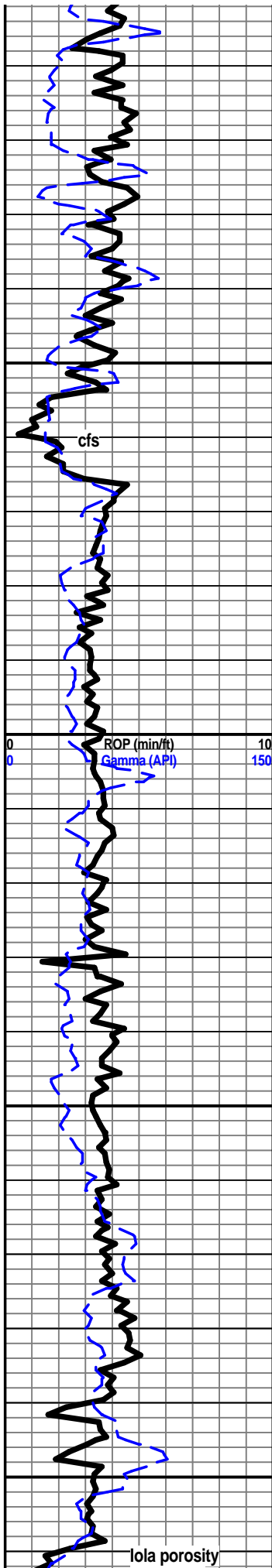
Shale light gray silty

Ls white fxln chalky foss Poor int xln por N.S.

Ls tan vfxln foss dense Poor int foss porosity N.S.

Ls off-white light tan f-cxln dense foss recrystalized chert scattered int xln por N.S.



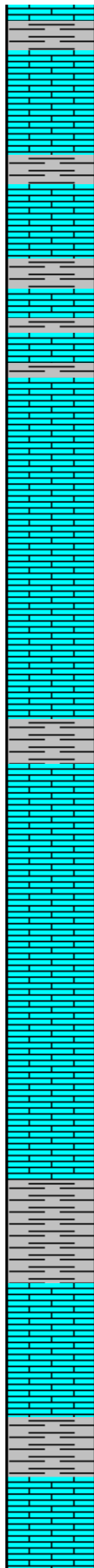


3150

3200

3250

3300



Ls gray vfxln sli foss sli cherty dense No vis porosity N.S.

Ls white vfxln chalky few vugs N.S.

Ls tan vf-cxln dense foss sli cherty No vis por N.S.

Shale gray

Ls tan f-mxln foss scattered fair int xln por Mostly poor N.S.

Shale light gray light green Ls gray vfxln dense foss N.S.

Ls light tan f-mxln oolitic some sli oolmoldic friable some chalky fair int ool porosity N.S.

Ls gray vfxln foss dense sli cherty No vis porosity N.S.

Ls tan vfxln foss dense cherty Poor int xln porosity N.S.

Shale light to med gray light green

Ls light gray to light tan vfxln foss dense poor

Ls dark gray vfxln foss dense No vis porosity N.S.

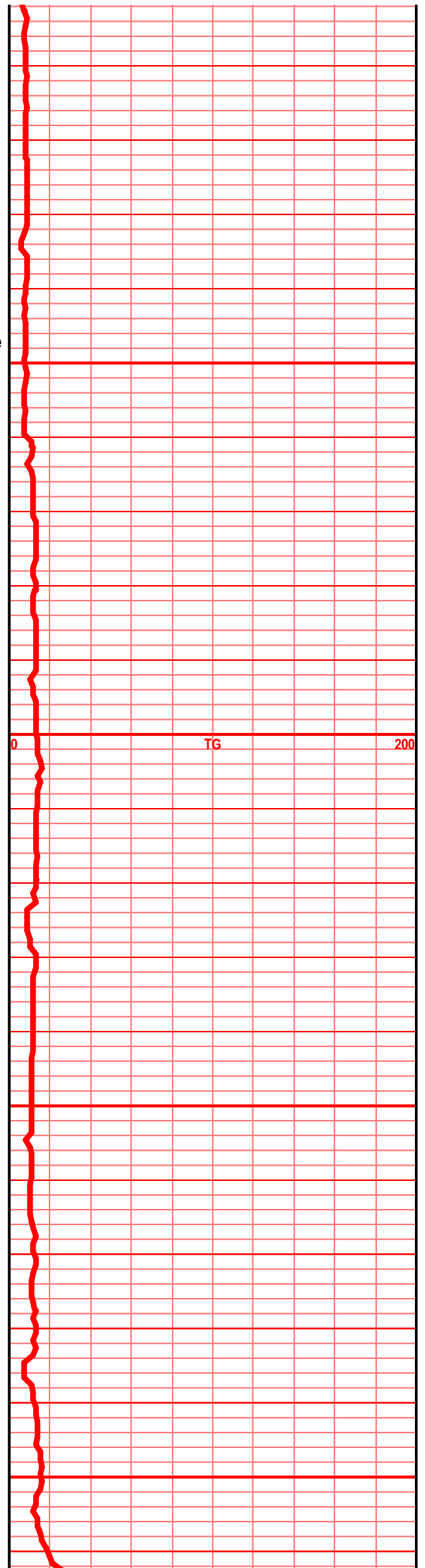
Ls gray vfxln sli foss dense N.S. No vis porosity

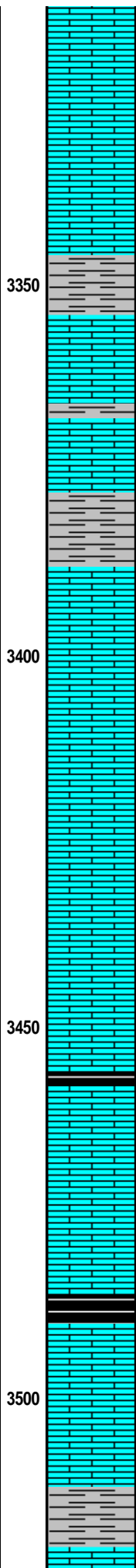
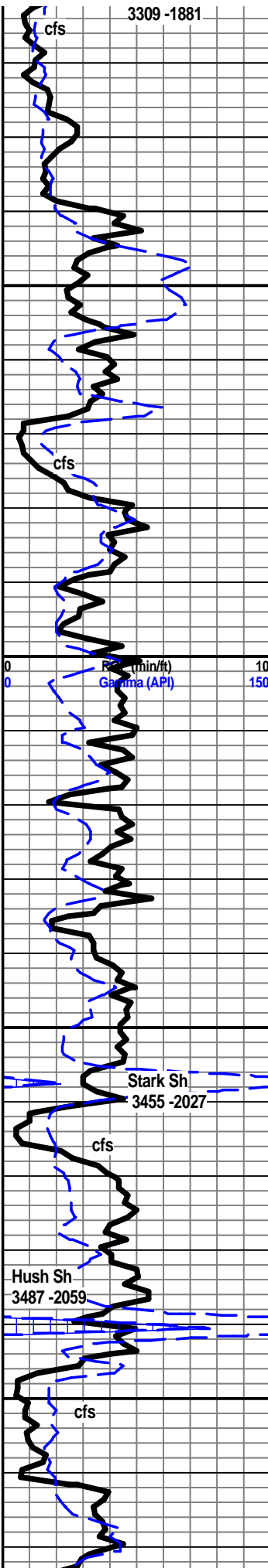
Shale light to dark gray Black light green

Ls dark gray vfxln dense v sli foss sli cherty poor int xln porosity N.S.

Shale light to med gray light green some dark gray silty

Ls light tan fxln sli foss poor int xln porosity N.S.





LS ight tan f-mxln oolitic fossil fragments
chalky Fair int xln porosity dull Flor No Odor
No gas bubbles

LS light tan light gray fxl n oolitic chalky
slightly vuggy poor int ool porosity N.S.

LS white f-mxln oolitic cherty poor int xln
porosity scattered fair pin point porosity N.S.

Shale light to dark gray

LS dark gray vf-mxln sli foss cherty dense
scattered fair int xln por Mostly Poor porosity
N.S.

LS light tan f-mxln foss Small vugs friable Poor
pin point porosity few gas bubbles faint odor
when broken Poor sptd Flor

LS tan vfxln dense sli foss cherty No Vis por
N.S.

Shale light gray light green

LS tan vfxln dense cherty tan opaque white
sharp fresh N.S.

LS tan vfxln dense N.S.

LS light gray fxl n subchalky slightly foss N.S.

LS light tan fxl n sucrosic oolitic chalky
scattered fair int ool porosity N.S.

LS light gray vfxln dense N.S.

Shale Black

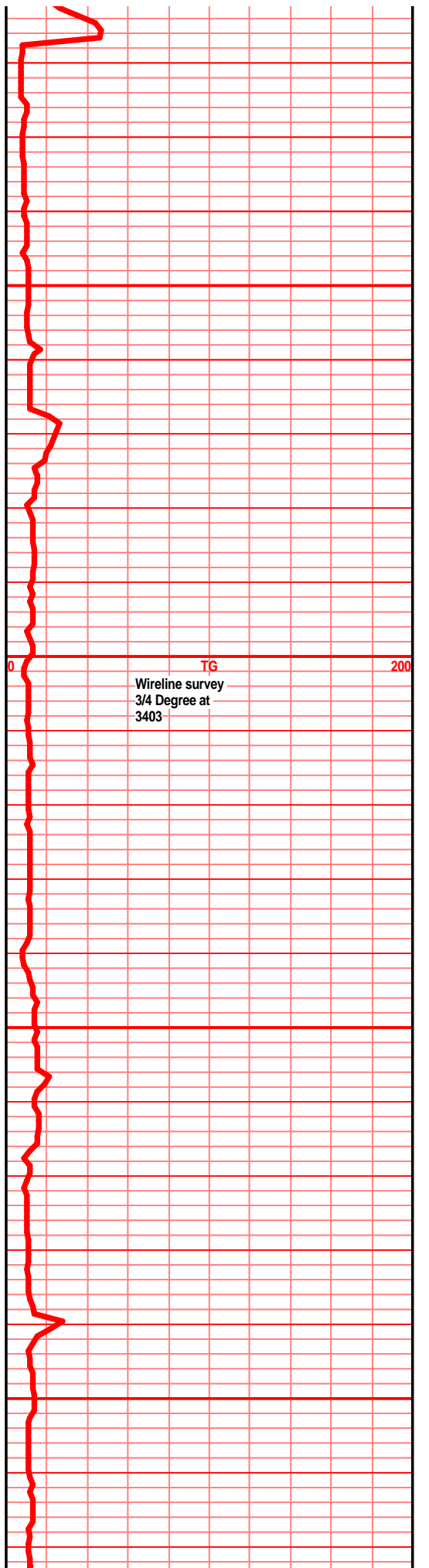
LS dark tan fxl n oolitic Good oolmoldic
porosity Scattered poor spotted Flor No Gas
bubbles or Odor

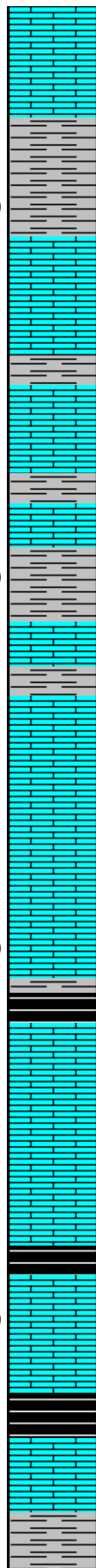
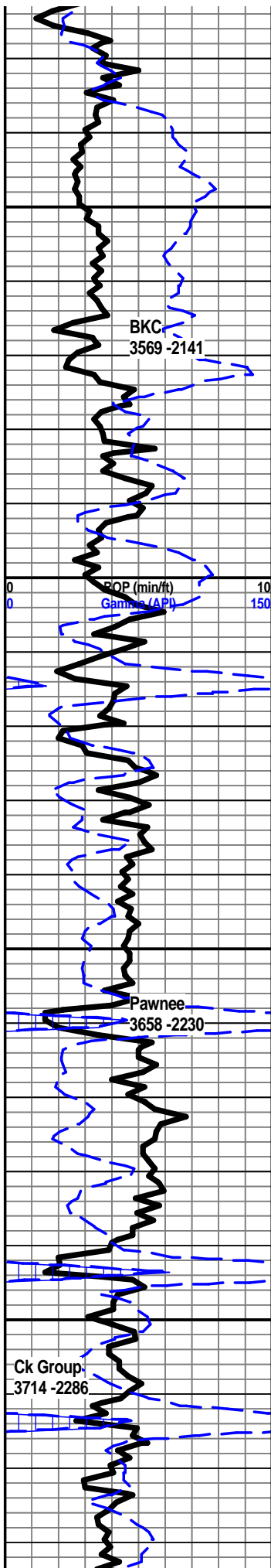
LS brown tan vfxln dense sli foss some mottled
No vis porosity N.S.

Shale Black

LS tan vfxln oolmoldic Fair Oolmoldic Porosity
cherty fossil fragments N.S.

LS tan vfxln foss dense herty tan opaque N.S.





Shale gray

Ls tan vfxln ool cherty vuggy poor int xln porosity N.S.

Shale light to med gray black light green

Ls white fxlIn chalky to tan dense N.S.

Shale Gray

Ls tan vfxln dense No vis porosity N.S.

Shale light to dark gray marron light green

Ls Dark gray vfxln foss dense cherty white opaque N.S.

Shale blue green gray

Ls light gray f-cxln foss glaucunite dense scattered fair pin point porosity N.S.

Ls gray vfxln chalky N.S.

Shale light to dark gray light green

Ls tan vfxln dense No vis porosity N.S.

Ls gray vfxln to sucrosic mostly dense poor porosity N.S.

Ls gray f-cxln mostly dense some chalky mottled N.S.

Shale Black

Ls gray vfxln dense some chalky N.S.

Ls gray vf-fxln dense No vis proosity N.S.

Ls tan vfxln dense poor int xln porosity N.S.

Shale Black

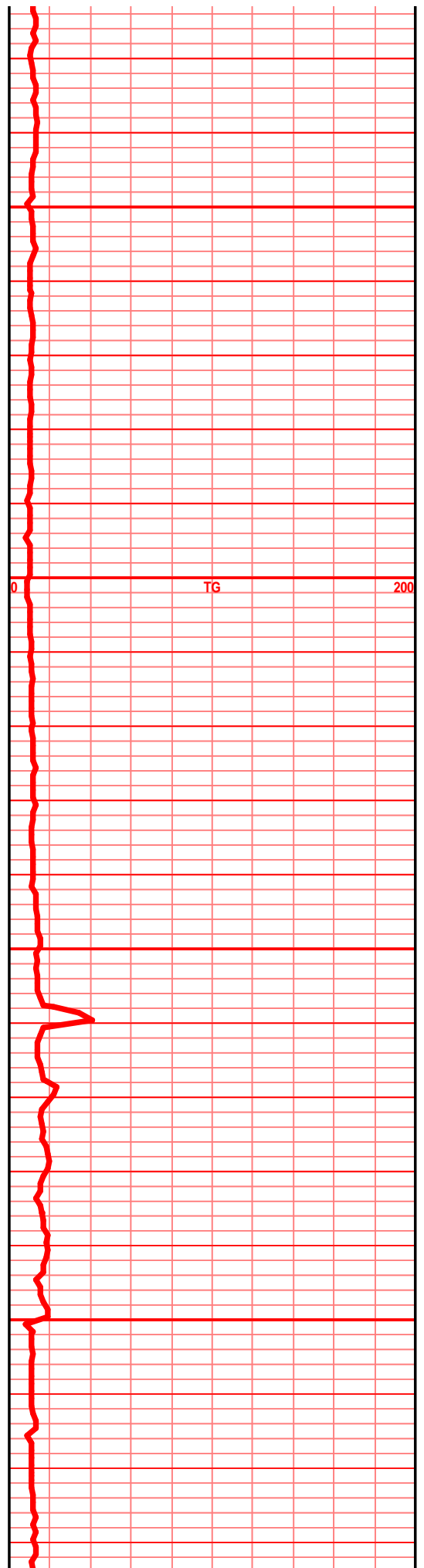
Ls gray vfxln dense sli foss N.S.

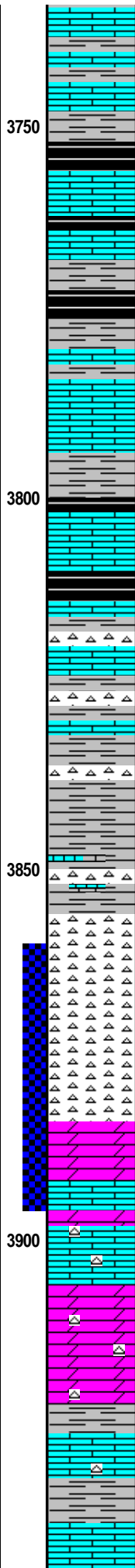
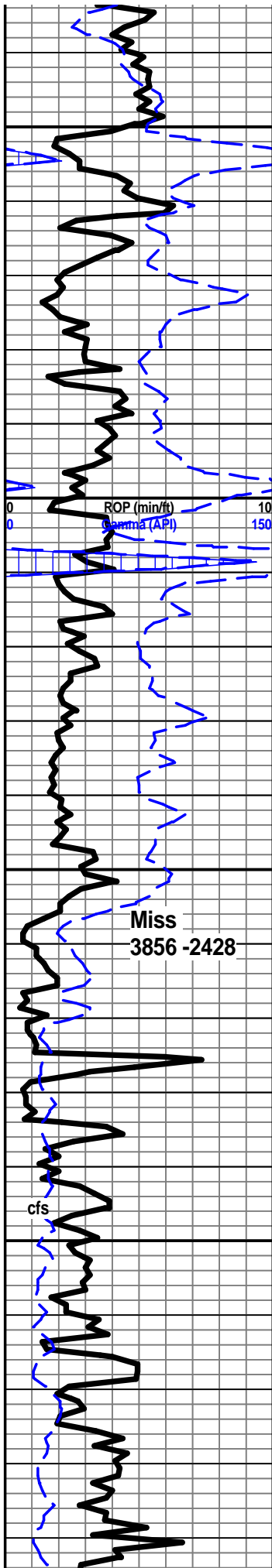
Ls white vfxln chalky

Shale Black

Ls light gray vfxln foss dense sli cherty No Vis porosity N.S.

Shale light green light gray med gray Black





Ls gray vfxln dense N.S.

Ls white vfxln chalky foss poor int xln porosity
Dull sptd Flor No Gas or other shows

Shale black med to dark gray green

Ls Dark tan vfxln dense sli foss cherty No Vis
Por N.S.

Shale Black gray light green

Ls dark gray vfxln dense N.S.

Shale gray black green

Ls gray tan vfxln dense N.S.

Shale Black

Ls gray tan f-cxln cherty dense weathered N.S.

Shale green waxy maroon

Ls tan vfxln dense Chert tan sharp fresh

Shale Green Black yellow maroon Chert tan
fresh sharp

Ls white light green mxln chalky chert tan
opaque some weathered

Chert white tan weathered trip poor pin pt por
P sptd stain & Dull sptd Flor VSSFO Blk
residue

Chert white tan trip weathered poor pin point
porosity VSSGFO W/stain mostly barren no
Stain or Flor

Cherty Dol fxlN some sucrosic poor pin point
porosity poor to fair int xln porosity Gd Sat
stain FSGFO Faint Odor Fair yellow Flor
Streaming Flor when cut

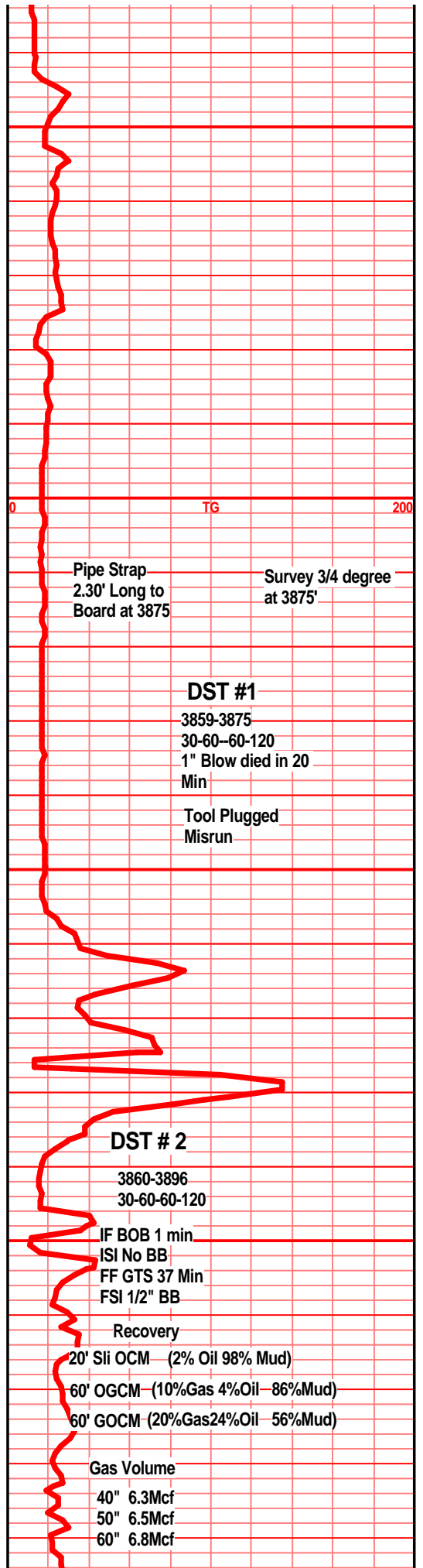
Dol white fxlN sucrosic fair int xln porosity
FSGFO friable chalky Fair Odor Light Sat stain
Fair Flor

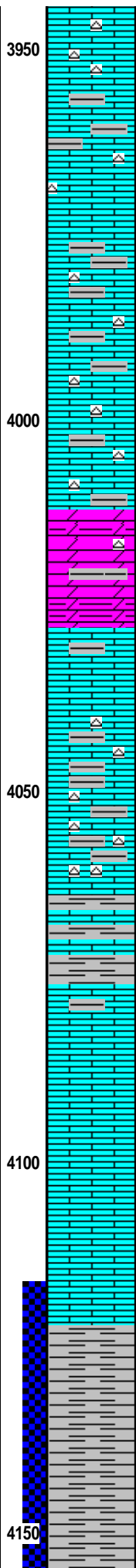
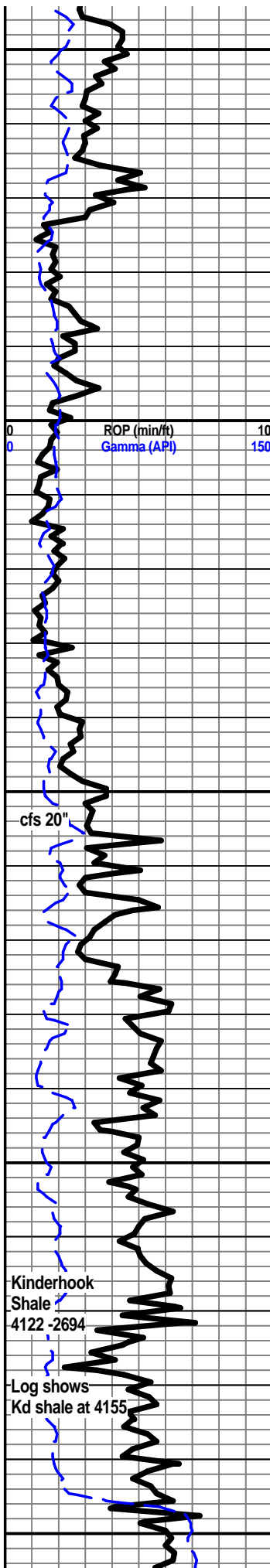
Ls tan gray vfxln to mxln sli foss cherty white
tan sli spotted stain Fair int xln porosity No
Flor or gas shows

Dol light tan f-mxln scattered fair int xln
porosity mostly poor and dense sli cherty N.S.

Dol Ls white fxlN fair int xln porosity friable
chalky Chert frag opaque light tan white N.S.

Ls white light gray f-cxln sli foss chalky fair int
xln porosity N.S.





Ls gray fxln dense cherty white tan sharp fresh
Poor int xln por N.S.

Ls as above cherty w/Shale light green gray
maroon reddish brown

Ls light tan f-mxln foss dense Fair int xln
porosity N.S.

Ls as above Chert white gray w/Shale bluish
green green brown gray

Ls gray f-mxln chalky Chert gray white light
green sli trip fresh sharp interbedded w/Shale
green gray brown maroon

Ls white f-mxln chalky foss mealy Chert white
gray foss some weathered trip interbedded
W/Shale brown black green

Dol brown fxln sucrosic chalky fair int xln por
trace Black residue chert white gray pale green
tan Shale green black gray red brown

Ls white f-cxln chalky to dense foss Shale
inclusions increase in Chert white gray foss
fresh sharp Shale Brown green gray as above

Ls white gray fxln dense Chert Blueish gray
sharp fresh Shale as above

Ls white gray f-cxln cherty dense interbedded
w/Shale light to med gray green N.S.

Increase in Shale brown gray green

Ls white light gray fxln Shale gray green
reddish brown

Ls gray f-cxln chalky Chert bluish gray opaque
Shale as above

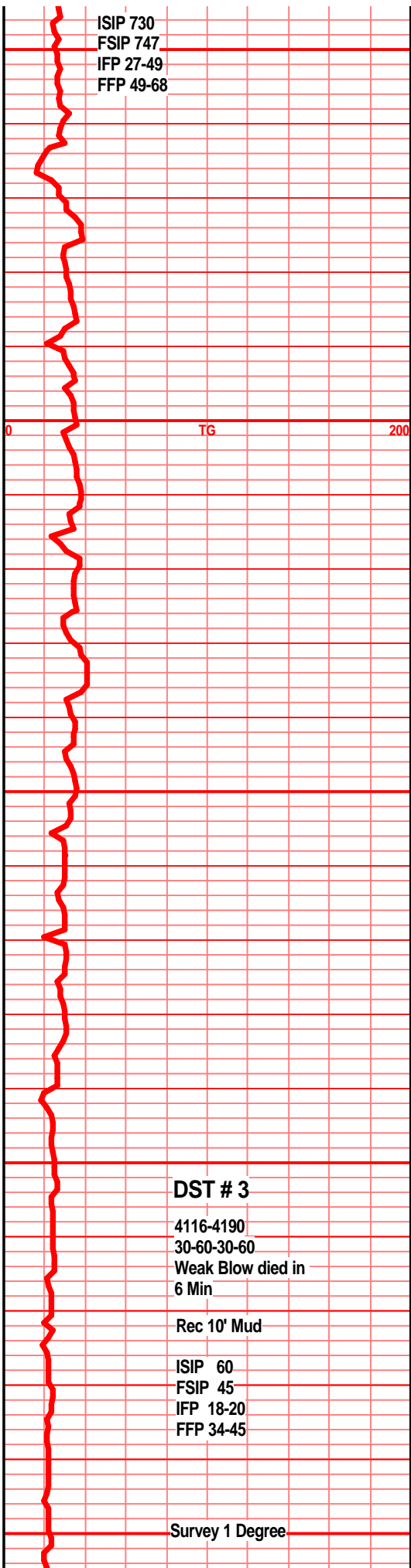
Ls gray fxln increase in shale light to med gray
green brown

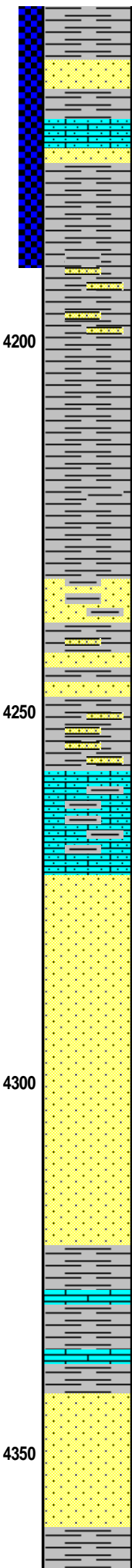
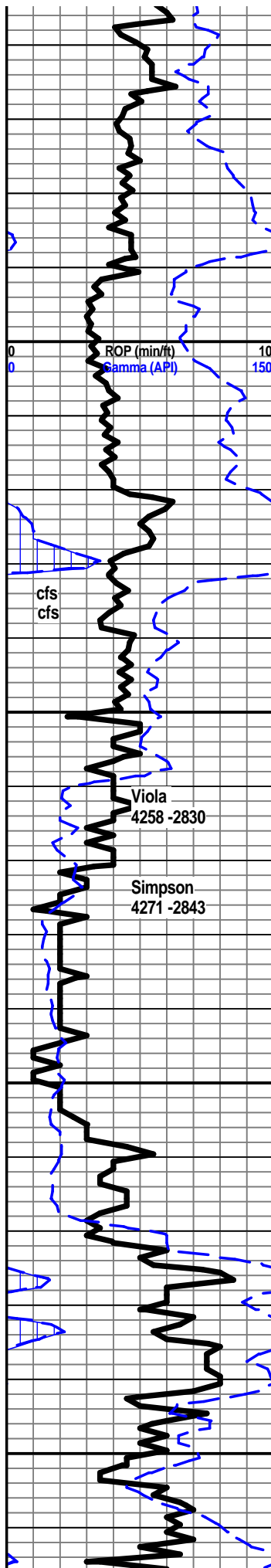
Ls gray fxln much shale light to med gray
reddish brown green

Ls gray vfxln dense Chert bluish gray tan white
sharp fresh Shale light to med gray green
brown

Increase in Shale light to med gray green
brown maroon

Shale light green light to med gray maroon





Sst light gray light green vf grain compact well cmtd poor int grain Por few w/sptd to Sat stain Few gas bubbles One with VSSFO bright Flor Mostly barren

Sandy Ls fxln sandy cherty scattered poor pin point por trace sptd stain No Flor or FO No Odor

Shale light to med gray silty sandy

Shale light to dark gray

Shale brown light green gray

Shale light to bright green brown sandy Sst clear white f-m grain sub angular to rounded pyrite well cmtd poor int grain porosity friable few gas bubbles

Sst white vf grain friable fair int grain porosity Shale Maroon gray green

Loose sand grains f-c grain ang to rounded SSst white vfgrain chert white Increase in Shale green maroon light gray

LS Sandy light gray friable abundance of Shale green maroon gray

SSst gray f-c xln fair porosity N.S. Ls Gray vfxln dense cherty gray yellow Mostly Shale Green maroon gray

SSst f-c grain gd int grain por friable pyrite chert gray white Shale as above N.S.

Sst light tan f-m grain friable gd int grain porosity shale inclusions pyrite Shale light green maroon gray light to dark N.S.

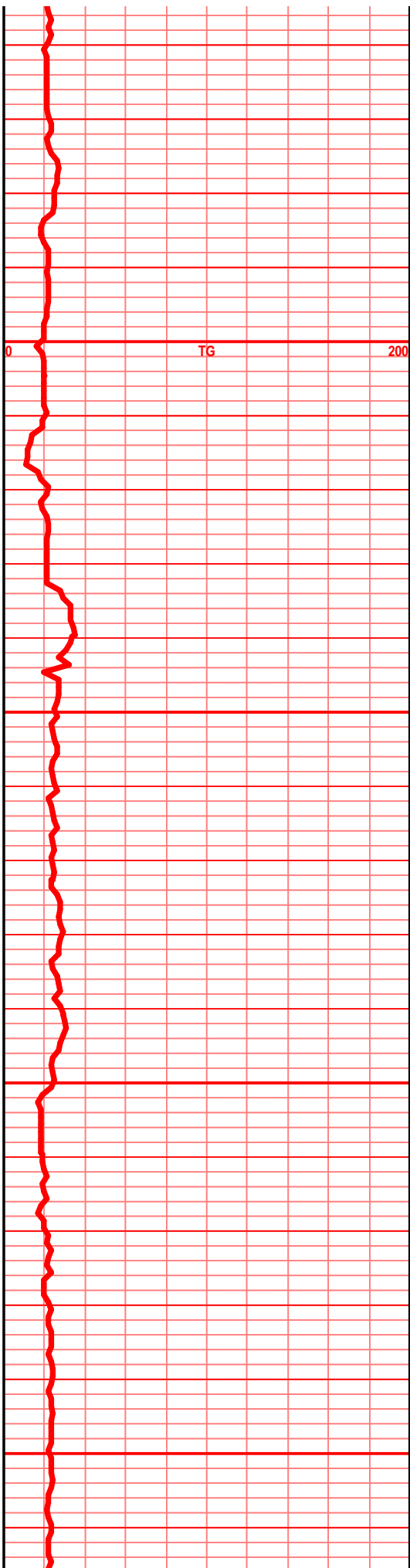
Shale red maroon brown green gray

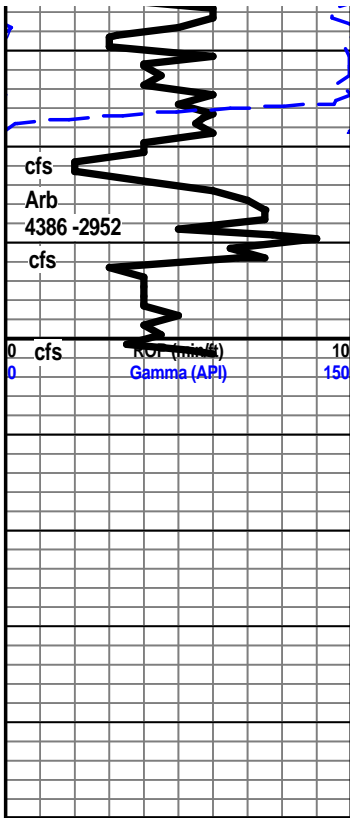
SSst white vfine grain compact poor intgrain porosity shale inclusions N.S.

Ls sandy dense fxln poor int xln porosity pyrite shale inclusions

Shale Maroon green gray yellow Ls tan gray fxln dense Chert tan white fresh sharp

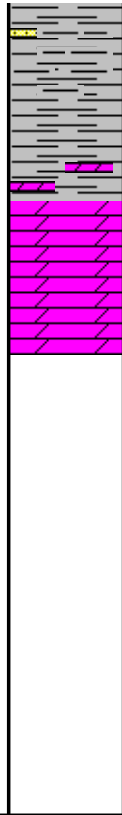
SSst white clear f-med grain rd to ang well cmtd Poor int grain porosity Black Residue Trace Dead Oil Milky Flor when cut w/SS gas bubbles Oil film Poor sptd stain Faint Odor when broken





4400

4450



Shale bright green waxy

Shale Marron light to dark gray green yellow

Dol white sucrosic dense cherty poor int xln
 porosity VSSFO GD Flor milky white when cut
 Light sptd to sat stain No Odor
 Dol fxln-mxln light gray fair int xln porosity
 N.S.

