

T34S, R7W, 6th P.M.

SGOMI

Well location, DAVIS 3407 #27-2H, located as shown on the Line Between the SE 1/4 SW 1/4 of Section 27 and the NE 1/4 NW 1/4 of section 34, T34S, R7W, 6th P.M., Harper County, Kansas.

BASIS OF ELEVATION

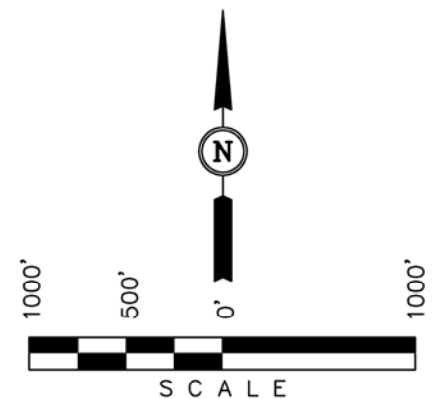
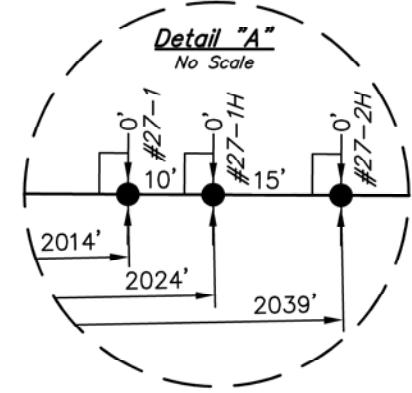
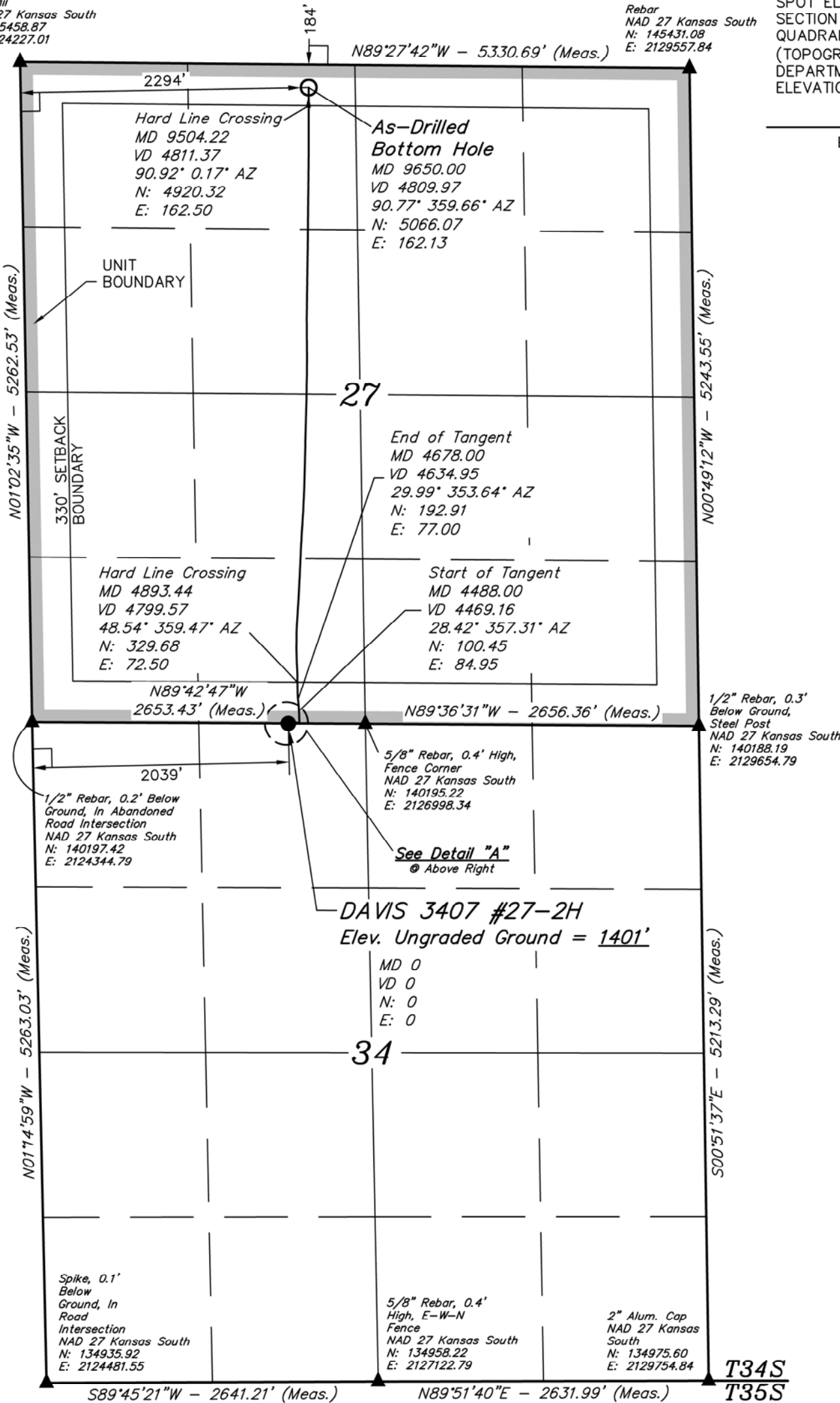
SPOT ELEVATION LOCATED AT THE NORTHEAST CORNER OF SECTION 22, T33S, R7W, 6th P.M. TAKEN FROM THE ANTHONY, QUADRANGLE, KANSAS, HARPER COUNTY, 7.5 MINUTE QUAD (TOPOGRAPHIC MAP) PUBLISHED BY THE UNITED STATES DEPARTMENT OF THE INTERIOR, GEOLOGICAL SURVEY. SAID ELEVATION IS MARKED AS BEING 1348 FEET.

BASIS OF BEARINGS

BASIS OF BEARINGS IS A G.P.S. OBSERVATION.

PK Nail
NAD 27 Kansas South
N: 145458.87
E: 2124227.01

Rebar
NAD 27 Kansas South
N: 145431.08
E: 2129557.84



CERTIFICATE

THIS IS TO CERTIFY THAT THE ABOVE PLAT WAS PREPARED FROM FIELD NOTES OF ACTUAL SURVEYS MADE BY ME OR UNDER MY SUPERVISION AND THAT THE SAME ARE TRUE AND CORRECT TO THE BEST OF MY KNOWLEDGE AND BELIEF.

REGISTERED LAND SURVEYOR
REGISTRATION NO. 1435
STATE OF KANSAS

UINTAH ENGINEERING & LAND SURVEYING
85 SOUTH 200 EAST - VERNAL, UTAH 84078
(435) 789-1017

LEGEND:

- └─┘ = 90° SYMBOL
- = PROPOSED WELL HEAD.
- ▲ = SECTION CORNERS LOCATED.

NAD 83 (#27-2H AS DRILLED BOTTOM HOLE) LATITUDE = 37°03'53.37" (37.064825) LONGITUDE = 98°04'00.27" (98.066742)	NAD 83 (#27-2H SURFACE LOCATION) LATITUDE = 37°03'03.28" (37.050911) LONGITUDE = 98°04'02.30" (98.067306)
NAD 27 (#27-2H AS DRILLED BOTTOM HOLE) LATITUDE = 37°03'53.28" (37.064800) LONGITUDE = 98°03'59.04" (98.066400)	NAD 27 (#27-2H SURFACE LOCATION) LATITUDE = 37°03'03.19" (37.050886) LONGITUDE = 98°04'01.07" (98.066964)
STATE PLANE NAD 27 N: 145262.62 E: 2126525.96	STATE PLANE NAD 27 N: 140196.45 E: 2126549.52

SCALE 1" = 1000'	DATE SURVEYED: 06-06-12	DATE DRAWN: 09-24-12
PARTY L.S. K.H. C.A.G.	REFERENCES G.L.O. PLAT	
WEATHER COOL	FILE SGOMI	