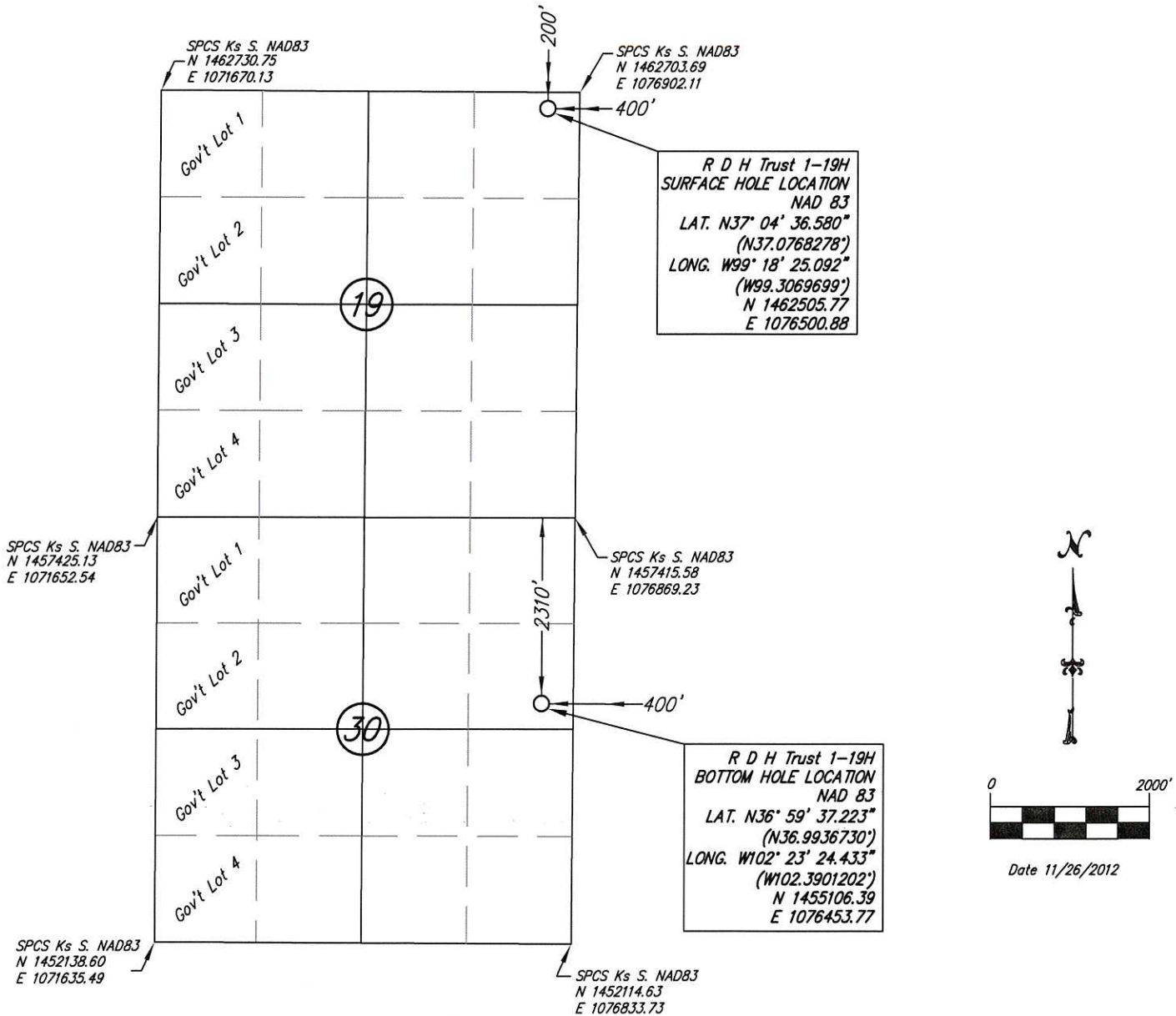


WELL STAKE-OUT SURVEY (SHL & BHL)



Lease Name: R D H Trust
 Well No. 1-19H
 Surface Hole Elevation at Stake: 1933.22 NAVD88
 Well Location Co./State: Comanche County, Kansas
 Well Location Section: 19-1345-R18W

Alternate Datums:

	Horz. Datum NAD 27	
R D H Trust #1-19H Surface Hole	Lat. N38°04'36.483"	Long. W99°18'45.688"
	N37.0768008"	W99.3065800"
R D H Trust #1-19H Bottom Hole	Lat. N36°59'37.149"	Long. W102°23'22.768"
	N36.9935856"	W102.3896577"

SURVEY DATUMS (shown on drawing)
 Horizontal Datum NAD83 (CORS96)
 Vertical Datum NAVD88 (GEOID09)
 Kansas SPCS South Zone (US Feet)

State of Kansas)
) SS
 Sedgwick County)

This is to certify that this map or plat and the survey on which it is based was made by me or under my direct supervision and that, to the best of my knowledge and belief, this is a true and correct exhibit of said survey. The wells shown hereon were staked October 25, 2012 at the coordinate location noted.



Brian N. Savoy, RLS #817
 This survey is valid only if print
 bears Surveyor's seal, signed in blue ink.



Savoy Company, P.A.
 Land Surveyors

PH (316) 265-0005
 FAX (316) 265-0275

433 S. Hydraulic, Suite 104, Wichita, KS 67202

www.savoyco.com



POE & ASSOCIATES, INC.
 CONSULTING ENGINEERS
 5940 E. Central, Suite 200 Wichita, KS 67208-4242
 Phone 316/685-4114 FAX 316/685-4444