

**TRILOBITE  
TESTING, INC.**

## DRILL STEM TEST REPORT

Prepared For: **DK Operating, Inc.**

24583 NW 208 Rd.  
Jetmore, KS 67854

ATTN: Jason Alm

**Dink #2**

**17-21s-22w Hodgeman,KS**

Start Date: 2012.09.13 @ 22:37:30

End Date: 2012.09.14 @ 06:45:00

Job Ticket #: 47927                      DST #: 1

Trilobite Testing, Inc

PO Box 362 Hays, KS 67601

ph: 785-625-4778 fax: 785-625-5620

Printed: 2012.09.18 @ 13:56:20

DK Operating, Inc.  
17-21s-22w Hodgeman,KS  
Dink #2  
DST # 1  
Fort Scott  
2012.09.13



**TRILOBITE  
TESTING, INC.**

## DRILL STEM TEST REPORT

DK Operating, Inc.

17-21s-22w Hodgeman, KS

24583 NW 208 Rd.  
Jetmore, KS 67854

**Dink #2**

Job Ticket: 47927

DST#: 1

ATTN: Jason Alm

Test Start: 2012.09.13 @ 22:37:30

### GENERAL INFORMATION:

Formation: **Fort Scott**

Deviated: No Whipstock: ft (KB)

Time Tool Opened: 01:37:00

Time Test Ended: 06:45:00

Test Type: Conventional Bottom Hole (Initial)

Tester: Dustin Rash

Unit No: 38

Interval: **4290.00 ft (KB) To 4345.00 ft (KB) (TVD)**

Total Depth: 4345.00 ft (KB) (TVD)

Hole Diameter: 7.88 inches Hole Condition: Fair

Reference Elevations: 2285.00 ft (KB)

2275.00 ft (CF)

KB to GR/CF: 10.00 ft

**Serial #: 8354** Inside

Press@RunDepth: 44.75 psig @ 4330.00 ft (KB)

Start Date: 2012.09.13

End Date: 2012.09.14

Start Time: 22:47:30

End Time: 06:45:00

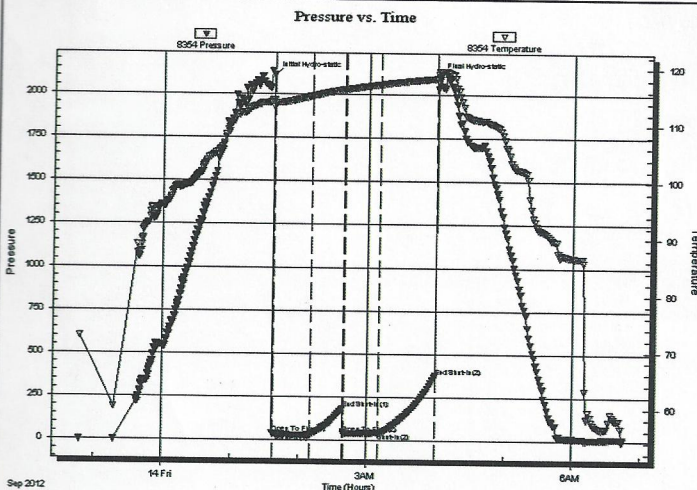
Capacity: 8000.00 psig

Last Calib.: 2012.09.14

Time On Btm: 2012.09.14 @ 01:36:30

Time Off Btm: 2012.09.14 @ 04:01:30

TEST COMMENT: IF-Weak building blow . Built to 5 inches.  
ISI-No Return.  
FF-Weak building blow . BOB in 27 minutes.  
FSI-No Return.



### PRESSURE SUMMARY

Time (Min.)	Pressure (psig)	Temp (deg F)	Annotation
0	2106.83	114.40	Initial Hydro-static
1	40.38	113.31	Open To Flow (1)
34	32.68	115.18	Shut-In(1)
63	186.42	116.30	End Shut-In(1)
64	39.15	116.30	Open To Flow (2)
94	44.75	117.20	Shut-In(2)
143	374.47	118.28	End Shut-In(2)
145	2101.89	119.44	Final Hydro-static

### Recovery

Length (ft)	Description	Volume (bbl)
10.00	50% Gas/10% Oil/40% Mud	0.05
30.00	5% Oil/95% Mud	0.15
0.00	268' G.I.P.	0.00

### Gas Rates

	Choke (inches)	Pressure (psig)	Gas Rate (Mcf/d)







**TRILOBITE  
TESTING, INC.**

## DRILL STEM TEST REPORT

TOOL DIAGRAM

DK Operating, Inc.

17-21s-22w Hodgeman, KS

24583 NW 208 Rd.  
Jetmore, KS 67854

Dink #2

Job Ticket: 47927

DST#: 1

ATTN: Jason Alm

Test Start: 2012.09.13 @ 22:37:30

### Tool Information

Drill Pipe:	Length: 4161.00 ft	Diameter: 3.80 inches	Volume: 58.37 bbl	Tool Weight: 3000.00 lb
Heavy Wt. Pipe:	Length: 0.00 ft	Diameter: 2.70 inches	Volume: 0.00 bbl	Weight set on Packer: 22000.00 lb
Drill Collar:	Length: 121.00 ft	Diameter: 2.25 inches	Volume: 0.60 bbl	Weight to Pull Loose: 5000.00 lb
			<b>Total Volume: 58.97 bbl</b>	Tool Chased 0.00 ft
Drill Pipe Above KB:	20.00 ft			String Weight: Initial 80000.00 lb
Depth to Top Packer:	4290.00 ft			Final 80000.00 lb
Depth to Bottom Packer:	ft			
Interval between Packers:	55.00 ft			
Tool Length:	83.00 ft			
Number of Packers:	2	Diameter: 6.75 inches		

Tool Comments:

Tool Description	Length (ft)	Serial No.	Position	Depth (ft)	Accum. Lengths
Change Over Sub	1.00			4263.00	
Shut In Tool	5.00			4268.00	
Hydraulic tool	5.00			4273.00	
Jars	5.00			4278.00	
Safety Joint	3.00			4281.00	
Packer	5.00			4286.00	28.00 Bottom Of Top Packer
Packer	4.00			4290.00	
Stubb	1.00			4291.00	
Perforations	5.00			4296.00	
Change Over Sub	1.00			4297.00	
Drill Pipe	32.00			4329.00	
Change Over Sub	1.00			4330.00	
Recorder	0.00	8354	Inside	4330.00	
Recorder	0.00	8520	Outside	4330.00	
Perforations	12.00			4342.00	
Bullnose	3.00			4345.00	55.00 Bottom Packers & Anchor
<b>Total Tool Length:</b>	<b>83.00</b>				





**TRILOBITE  
TESTING, INC.**

**DRILL STEM TEST REPORT**

**FLUID SUMMARY**

DK Operating, Inc.  
24583 NW 208 Rd.  
Jetmore, KS 67854  
ATTN: Jason Alm

**17-21s-22w Hodgeman,KS**  
**Dink #2**  
Job Ticket: 47927      **DST#: 1**  
Test Start: 2012.09.13 @ 22:37:30

**Mud and Cushion Information**

Mud Type: Gel Chem	Cushion Type:	Oil API:	deg API
Mud Weight: 9.00 lb/gal	Cushion Length: ft	Water Salinity:	ppm
Viscosity: 45.00 sec/qt	Cushion Volume: bbl		
Water Loss: 10.77 in <sup>3</sup>	Gas Cushion Type:		
Resistivity: ohm.m	Gas Cushion Pressure: psig		
Salinity: 4200.00 ppm			
Filter Cake: inches			

**Recovery Information**

Recovery Table

Length ft	Description	Volume bbl
10.00	50%Gas/10%Oil/40%Mud	0.049
30.00	5%Oil/95%Mud	0.148
0.00	268' G.I.P.	0.000

Total Length: 40.00 ft      Total Volume: 0.197 bbl

Num Fluid Samples: 0      Num Gas Bombs: 0      Serial #:

Laboratory Name:      Laboratory Location:

Recovery Comments:



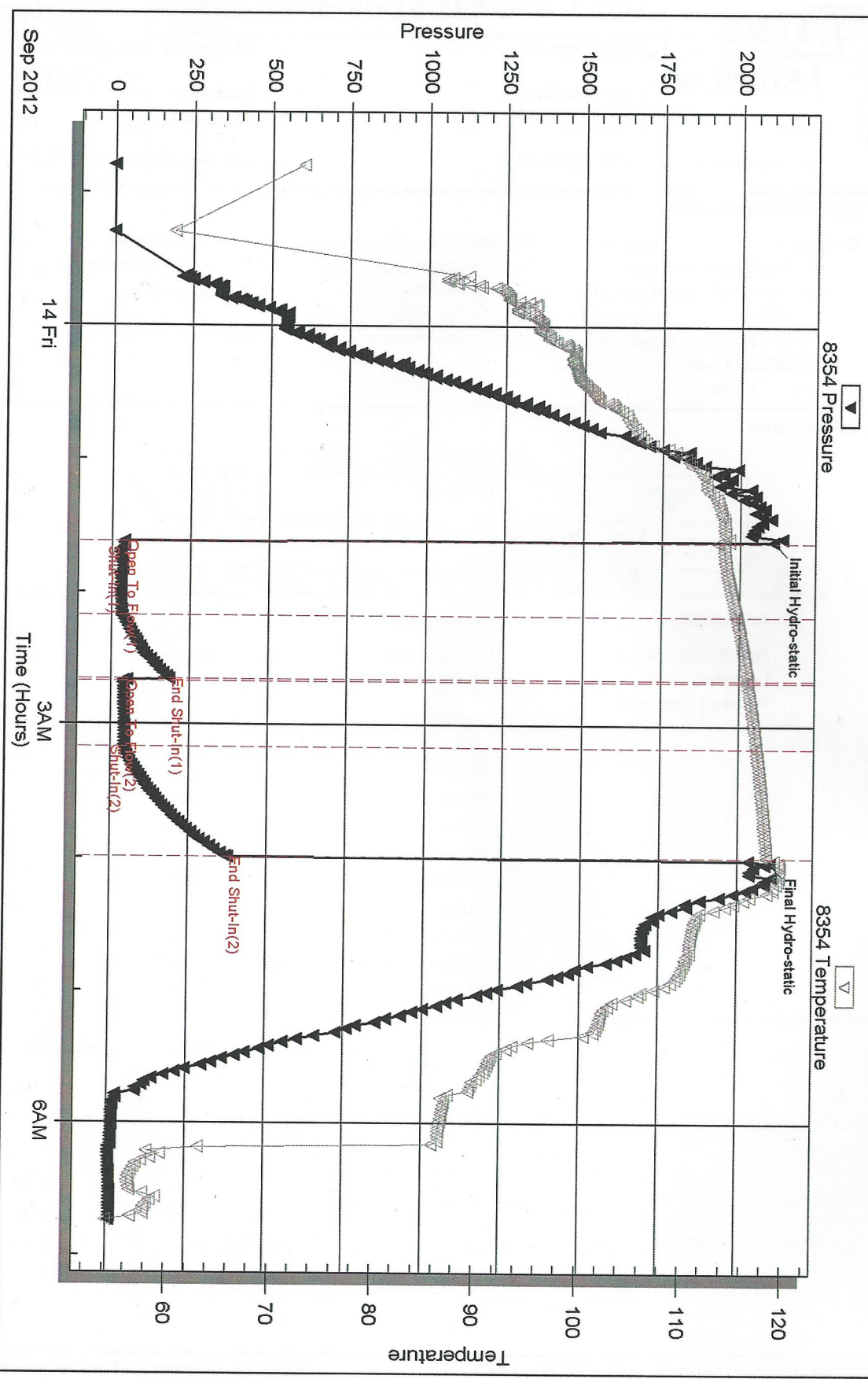
Serial #: 8354

Inside DK Operating, Inc.

Dink #2

DST Test Number: 1

### Pressure vs. Time



Triobite Testing, Inc

Ref. No: 47927

Printed: 2012.09.18 @ 13:56:25

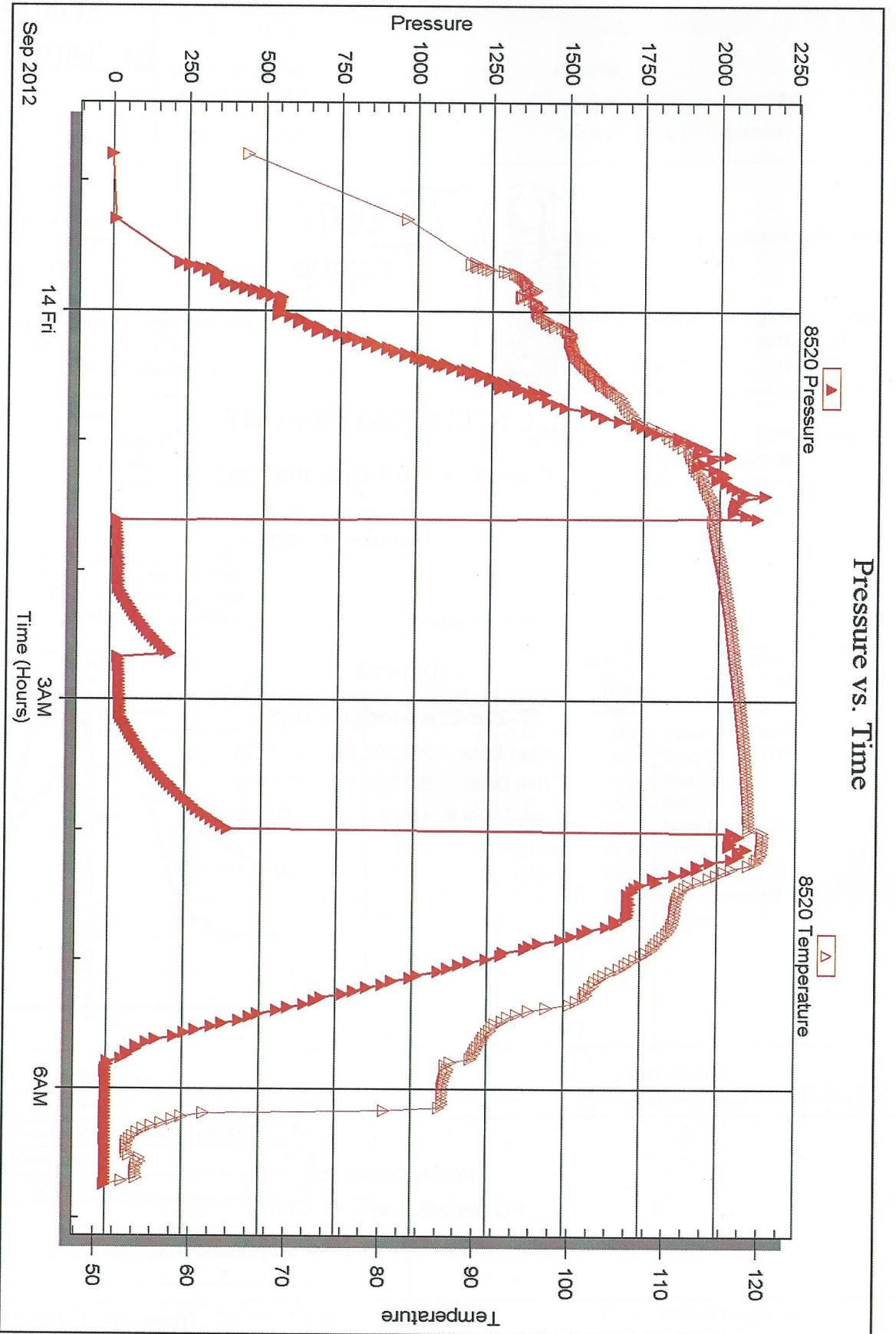


Serial #: 8520

Outside DK Operating, Inc.

Dnk #2

DST Test Number: 1



Trilobite Testing, Inc

Ref. No: 47927

Printed: 2012.09.18 @ 13:56:25