



DRILL STEM TEST REPORT

Prepared For: **Murfin Drilling Co.**

250 N Water STE #300
Wichita, KS 67202

ATTN: Jeff Christian

Brewer #1-18

18-2s-29w Decatur,KS

Start Date: 2012.08.14 @ 07:27:00

End Date: 2012.08.14 @ 14:24:45

Job Ticket #: 45644 DST #: 1

Trilobite Testing, Inc
PO Box 362 Hays, KS 67601
ph: 785-625-4778 fax: 785-625-5620

Printed: 2012.08.17 @ 10:53:16



**TRILOBITE
TESTING, INC.**

DRILL STEM TEST REPORT

Murfin Drilling Co.
250 N Water STE #300
Wichita, KS 67202
ATTN: Jeff Christian

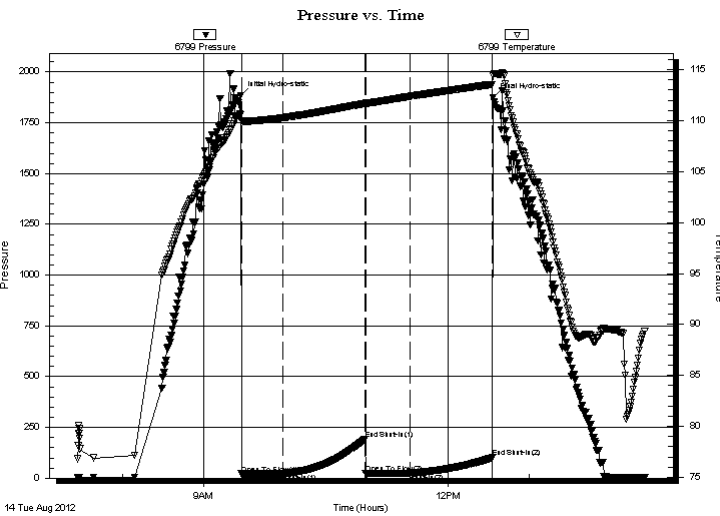
18-2s-29w Decatur, KS
Brewer #1-18
Job Ticket: 45644 **DST#: 1**
Test Start: 2012.08.14 @ 07:27:00

GENERAL INFORMATION:

Formation: **LKC "A"**
Deviated: No Whipstock: ft (KB)
Time Tool Opened: 09:27:45
Time Test Ended: 14:24:45
Interval: **3760.00 ft (KB) To 3812.00 ft (KB) (TVD)**
Total Depth: 3912.00 ft (KB) (TVD)
Hole Diameter: 7.88 inches Hole Condition: Good
Test Type: Conventional Bottom Hole (Initial)
Tester: Kevin Mack
Unit No: 43
Reference Elevations: 2795.00 ft (KB)
2790.00 ft (CF)
KB to GR/CF: 5.00 ft

Serial #: 6799 Inside
Press @ Run Depth: 23.66 psig @ 3761.00 ft (KB) Capacity: 8000.00 psig
Start Date: 2012.08.14 End Date: 2012.08.14 Last Calib.: 2012.08.14
Start Time: 07:27:05 End Time: 14:24:44 Time On Btm: 2012.08.14 @ 09:27:00
Time Off Btm: 2012.08.14 @ 12:33:00

TEST COMMENT: 30 - IF- 1/8" Blow Did not build or die
60 - IS- No Return
30 - FF- No Blow
60 - FS- No Return



PRESSURE SUMMARY

Time (Min.)	Pressure (psig)	Temp (deg F)	Annotation
0	1883.96	110.60	Initial Hydro-static
1	20.62	109.99	Open To Flow (1)
32	21.28	110.28	Shut-In(1)
92	190.67	111.67	End Shut-In(1)
93	22.15	111.64	Open To Flow (2)
126	23.66	112.37	Shut-In(2)
186	100.81	113.54	End Shut-In(2)
186	1872.95	114.41	Final Hydro-static

Recovery

Length (ft)	Description	Volume (bbl)
5.00	Mud 100M	0.02

Gas Rates

Choke (inches)	Pressure (psig)	Gas Rate (Mcf/d)



**TRILOBITE
TESTING, INC.**

DRILL STEM TEST REPORT

TOOL DIAGRAM

Murfin Drilling Co.

18-2s-29w Decatur,KS

250 N Water STE #300
Wichita, KS 67202

Brewer #1-18

Job Ticket: 45644

DST#: 1

ATTN: Jeff Christian

Test Start: 2012.08.14 @ 07:27:00

Tool Information

Drill Pipe:	Length: 3570.00 ft	Diameter: 3.80 inches	Volume: 50.08 bbl	Tool Weight: 2500.00 lb
Heavy Wt. Pipe:	Length: 0.00 ft	Diameter: 0.00 inches	Volume: 0.00 bbl	Weight set on Packer: 25000.00 lb
Drill Collar:	Length: 186.00 ft	Diameter: 2.25 inches	Volume: 0.91 bbl	Weight to Pull Loose: 52000.00 lb
			<u>Total Volume: 50.99 bbl</u>	Tool Chased ft
Drill Pipe Above KB:	25.00 ft			String Weight: Initial 50000.00 lb
Depth to Top Packer:	3760.00 ft			Final 50000.00 lb
Depth to Bottom Packer:	ft			
Interval between Packers:	52.00 ft			
Tool Length:	81.00 ft			
Number of Packers:	2	Diameter: 6.75 inches		

Tool Comments:

Tool Description

Length (ft) Serial No. Position Depth (ft) Accum. Lengths

Tool Description	Length (ft)	Serial No.	Position	Depth (ft)	Accum. Lengths
Change Over Sub	1.00			3732.00	
Shut In Tool	5.00			3737.00	
Hydraulic tool	5.00			3742.00	
Jars	5.00			3747.00	
Safety Joint	3.00			3750.00	
Packer	5.00			3755.00	29.00 Bottom Of Top Packer
Packer	5.00			3760.00	
Stubb	1.00			3761.00	
Recorder	0.00	8648	Inside	3761.00	
Recorder	0.00	6799	Inside	3761.00	
Perforations	12.00			3773.00	
Change Over Sub	1.00			3774.00	
Drill Pipe	32.00			3806.00	
Change Over Sub	1.00			3807.00	
Bullnose	5.00			3812.00	52.00 Bottom Packers & Anchor

Total Tool Length: 81.00



**TRILOBITE
TESTING, INC.**

DRILL STEM TEST REPORT

FLUID SUMMARY

Murfin Drilling Co.

18-2s-29w Decatur,KS

250 N Water STE #300
Wichita, KS 67202

Brewer #1-18

Job Ticket: 45644

DST#: 1

ATTN: Jeff Christian

Test Start: 2012.08.14 @ 07:27:00

Mud and Cushion Information

Mud Type: Gel Chem

Cushion Type:

Oil API:

deg API

Mud Weight: 9.00 lb/gal

Cushion Length:

ft

Water Salinity:

ppm

Viscosity: 65.00 sec/qt

Cushion Volume:

bbbl

Water Loss: 5.59 in³

Gas Cushion Type:

Resistivity: 0.00 ohm.m

Gas Cushion Pressure:

psig

Salinity: 1100.00 ppm

Filter Cake: 2.00 inches

Recovery Information

Recovery Table

Length ft	Description	Volume bbl
5.00	Mud 100M	0.025

Total Length: 5.00 ft Total Volume: 0.025 bbl

Num Fluid Samples: 0

Num Gas Bombs: 0

Serial #:

Laboratory Name:

Laboratory Location:

Recovery Comments:

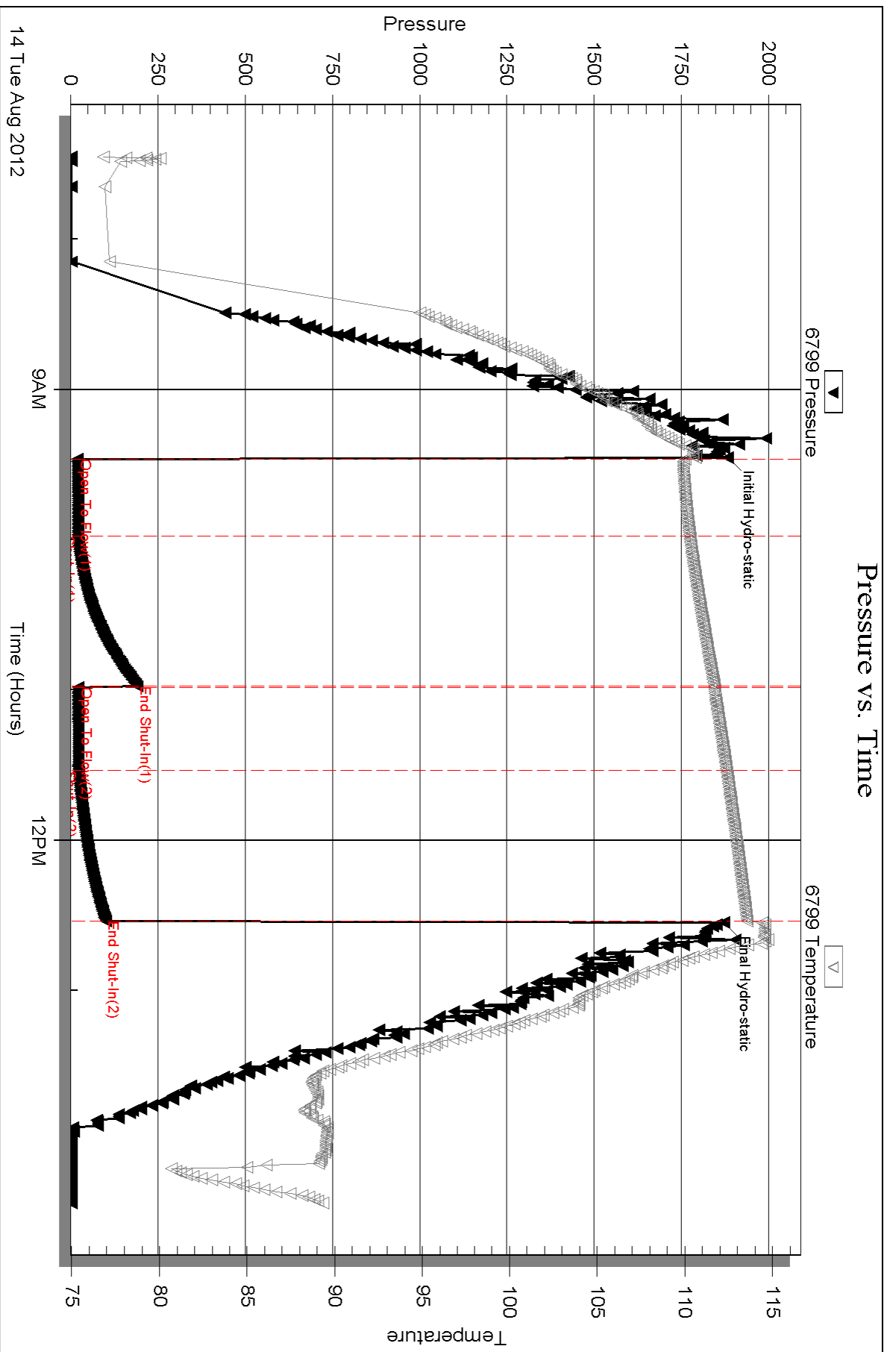
Serial #: 6799

Inside

Murfin Drilling Co.

Brewer #1-18

DST Test Number: 1



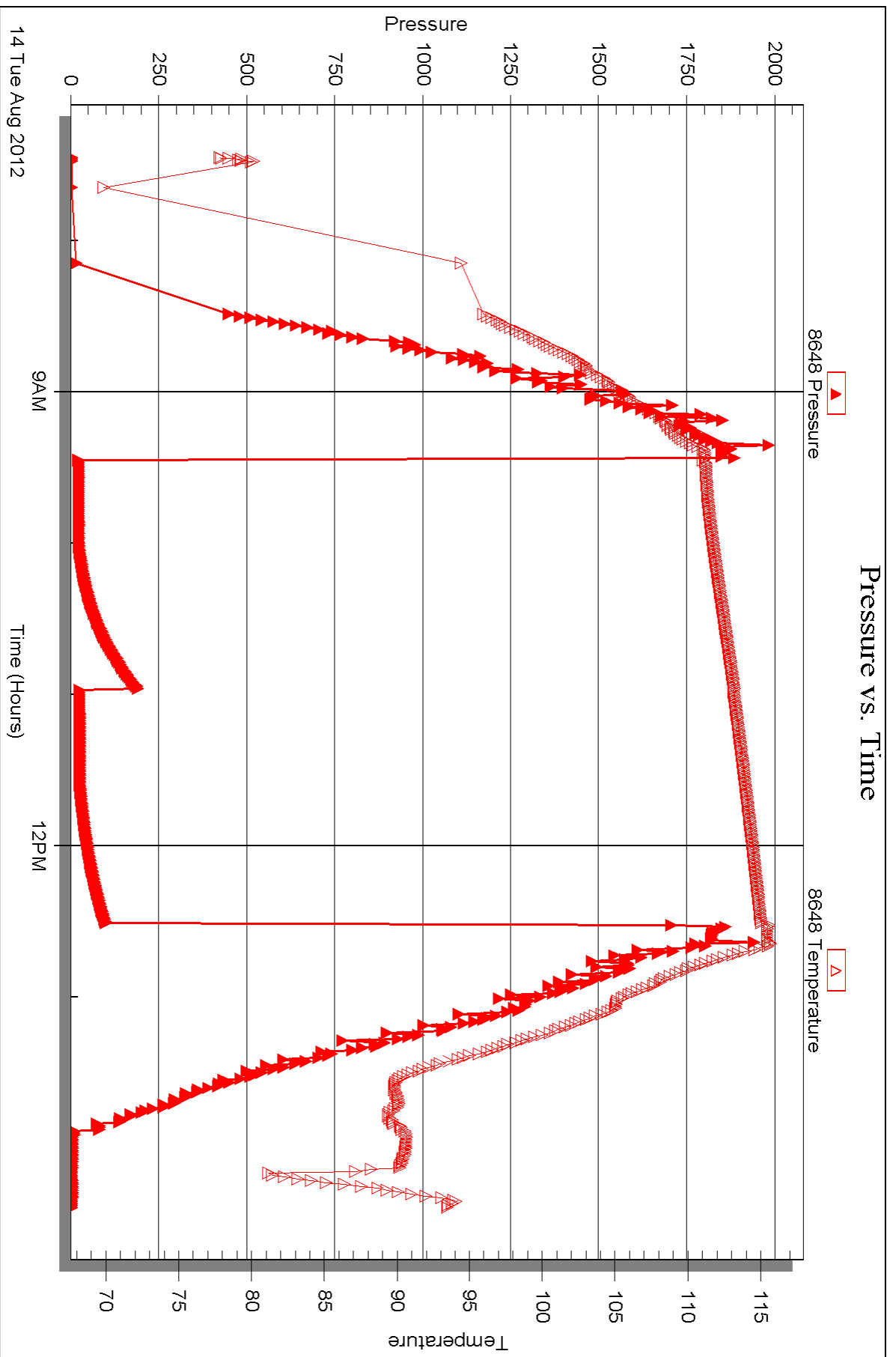
Serial #: 8648

Inside

Murfin Drilling Co.

Brewer #1-18

DST Test Number: 1



Triobite Testing, Inc

Ref. No: 45644

Printed: 2012.08.17 @ 10:53:19



DRILL STEM TEST REPORT

Prepared For: **Murfin Drilling Co.**

250 N Water STE #300
Wichita, KS 67202

ATTN: Jeff Christian

Brewer #1-18

18-2s-29w Decatur,KS

Start Date: 2012.08.14 @ 23:15:00

End Date: 2012.08.15 @ 08:03:00

Job Ticket #: 45645 DST #: 2

Trilobite Testing, Inc

PO Box 362 Hays, KS 67601

ph: 785-625-4778 fax: 785-625-5620

Printed: 2012.08.17 @ 10:52:39

Murfin Drilling Co. 18-2s-29w Decatur,KS Brewer #1-18 DST # 2 LKC "D&G" 2012.08.14



**TRILOBITE
TESTING, INC.**

DRILL STEM TEST REPORT

Murfin Drilling Co.
250 N Water STE #300
Wichita, KS 67202
ATTN: Jeff Christian

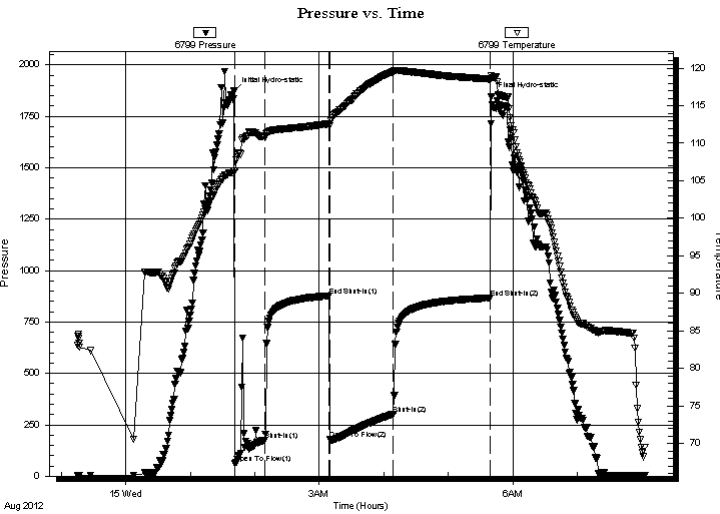
18-2s-29w Decatur, KS
Brewer #1-18
Job Ticket: 45645 **DST#: 2**
Test Start: 2012.08.14 @ 23:15:00

GENERAL INFORMATION:

Formation: **LKC "D&G"**
Deviated: No Whipstock: ft (KB)
Time Tool Opened: 01:41:45
Time Test Ended: 08:03:00
Interval: **3812.00 ft (KB) To 3900.00 ft (KB) (TVD)**
Total Depth: 3900.00 ft (KB) (TVD)
Hole Diameter: 7.88 inches Hole Condition: Good
Test Type: Conventional Bottom Hole (Initial)
Tester: Kevin Mack
Unit No: 43
Reference Elevations: 2795.00 ft (KB)
2790.00 ft (CF)
KB to GR/CF: 5.00 ft

Serial #: 6799 Inside
Press @ Run Depth: 302.46 psig @ 3813.00 ft (KB) Capacity: 8000.00 psig
Start Date: 2012.08.14 End Date: 2012.08.15 Last Calib.: 2012.08.15
Start Time: 23:15:05 End Time: 08:03:00 Time On Btm: 2012.08.15 @ 01:40:45
Time Off Btm: 2012.08.15 @ 05:40:15

TEST COMMENT: 30 - IF- BoB in 13 min
60 - IS- No Return
60 - FF- BoB in 12 min
69 - FS- Surface Return started at 20 min. Built to 2 1/2"



PRESSURE SUMMARY

Time (Min.)	Pressure (psig)	Temp (deg F)	Annotation
0	1872.21	106.31	Initial Hydro-static
1	63.38	106.30	Open To Flow (1)
28	174.99	110.90	Shut-In(1)
88	877.01	112.57	End Shut-In(1)
89	179.10	112.32	Open To Flow (2)
148	302.46	119.53	Shut-In(2)
238	867.03	118.54	End Shut-In(2)
240	1845.43	118.56	Final Hydro-static

Recovery

Length (ft)	Description	Volume (bbl)
186.00	MW 90W 10M	0.91
252.00	GOCWM 15G 10o 15W 60M	3.53
126.00	OCM 20o 80M	1.77
60.00	Free Oil 100o	0.84
0.00	310' GIP	0.00

Gas Rates

Choke (inches)	Pressure (psig)	Gas Rate (Mcf/d)



**TRILOBITE
TESTING, INC.**

DRILL STEM TEST REPORT

TOOL DIAGRAM

Murfin Drilling Co.
250 N Water STE #300
Wichita, KS 67202
ATTN: Jeff Christian

18-2s-29w Decatur,KS
Brewer #1-18
Job Ticket: 45645 **DST#: 2**
Test Start: 2012.08.14 @ 23:15:00

Tool Information

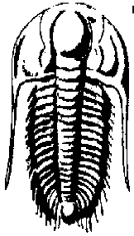
Drill Pipe:	Length: 3630.00 ft	Diameter: 3.80 inches	Volume: 50.92 bbl	Tool Weight: 2500.00 lb
Heavy Wt. Pipe:	Length: 0.00 ft	Diameter: 0.00 inches	Volume: 0.00 bbl	Weight set on Packer: 25000.00 lb
Drill Collar:	Length: 186.00 ft	Diameter: 2.25 inches	Volume: 0.91 bbl	Weight to Pull Loose: 54000.00 lb
			<u>Total Volume: 51.83 bbl</u>	Tool Chased ft
Drill Pipe Above KB:	33.00 ft			String Weight: Initial 50000.00 lb
Depth to Top Packer:	3812.00 ft			Final 52000.00 lb
Depth to Bottom Packer:	ft			
Interval between Packers:	88.00 ft			
Tool Length:	117.00 ft			
Number of Packers:	2	Diameter: 6.75 inches		

Tool Comments:

Tool Description	Length (ft)	Serial No.	Position	Depth (ft)	Accum. Lengths
-------------------------	--------------------	-------------------	-----------------	-------------------	-----------------------

Change Over Sub	1.00			3784.00	
Shut In Tool	5.00			3789.00	
Hydraulic tool	5.00			3794.00	
Jars	5.00			3799.00	
Safety Joint	3.00			3802.00	
Packer	5.00			3807.00	29.00 Bottom Of Top Packer
Packer	5.00			3812.00	
Stubb	1.00			3813.00	
Recorder	0.00	8648	Inside	3813.00	
Recorder	0.00	6799	Inside	3813.00	
Perforations	17.00			3830.00	
Change Over Sub	1.00			3831.00	
Drill Pipe	63.00			3894.00	
Change Over Sub	1.00			3895.00	
Bullnose	5.00			3900.00	88.00 Bottom Packers & Anchor

Total Tool Length: 117.00



**TRILOBITE
TESTING, INC.**

DRILL STEM TEST REPORT

FLUID SUMMARY

Murfin Drilling Co.

18-2s-29w Decatur,KS

250 N Water STE #300
Wichita, KS 67202

Brewer #1-18

Job Ticket: 45645

DST#: 2

ATTN: Jeff Christian

Test Start: 2012.08.14 @ 23:15:00

Mud and Cushion Information

Mud Type: Gel Chem

Cushion Type:

Oil API:

36 deg API

Mud Weight: 9.00 lb/gal

Cushion Length:

ft

Water Salinity:

27000 ppm

Viscosity: 69.00 sec/qt

Cushion Volume:

bbbl

Water Loss: 5.99 in³

Gas Cushion Type:

Resistivity: 0.00 ohm.m

Gas Cushion Pressure:

psig

Salinity: 1200.00 ppm

Filter Cake: 2.00 inches

Recovery Information

Recovery Table

Length ft	Description	Volume bbbl
186.00	MW 90W 10M	0.915
252.00	GOCWM 15G 10o 15W 60M	3.535
126.00	OCM 20o 80M	1.767
60.00	Free Oil 100o	0.842
0.00	310' GIP	0.000

Total Length: 624.00 ft

Total Volume: 7.059 bbl

Num Fluid Samples: 0

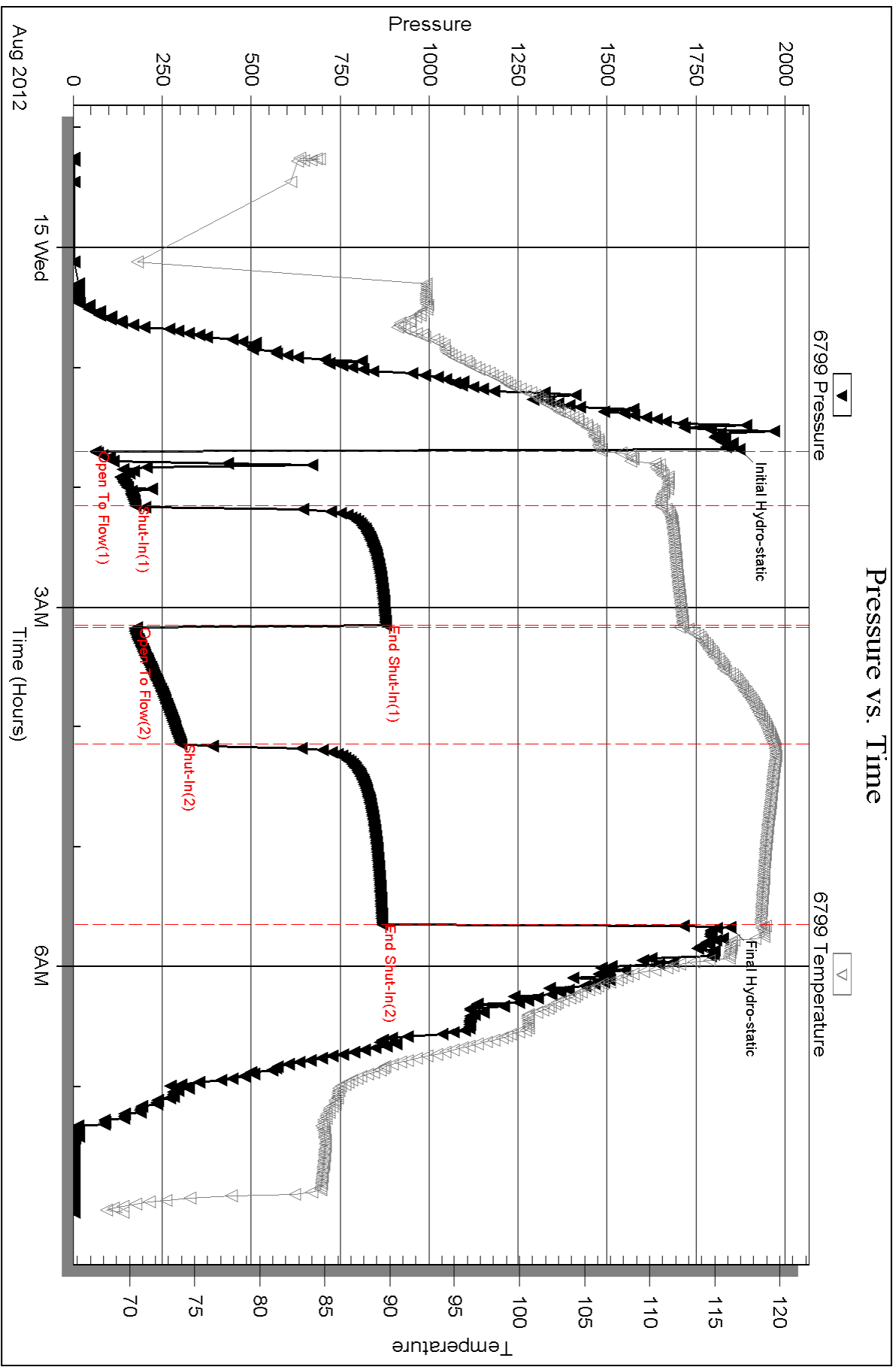
Num Gas Bombs: 0

Serial #:

Laboratory Name:

Laboratory Location:

Recovery Comments:



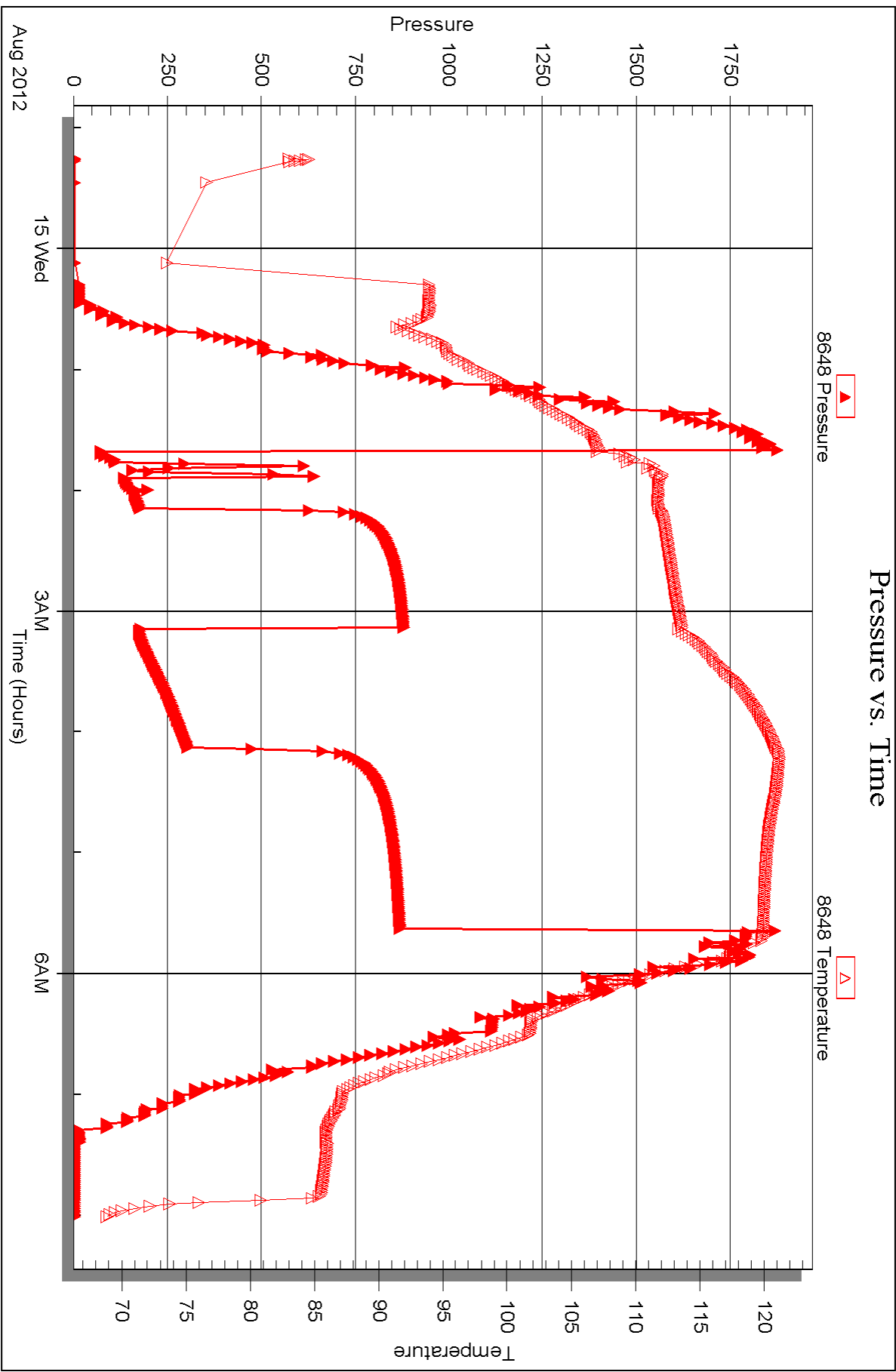
Serial #: 8648

Inside

Murfin Drilling Co.

Brewer #1-18

DST Test Number: 2





DRILL STEM TEST REPORT

Prepared For: **Murfin Drilling Co.**

250 N Water STE #300
Wichita, KS 67202

ATTN: Jeff Christian

Brewer #1-18

18-2s-29w Decatur,KS

Start Date: 2012.08.15 @ 16:45:00

End Date: 2012.08.16 @ 01:08:45

Job Ticket #: 45646 DST #: 3

Trilobite Testing, Inc

PO Box 362 Hays, KS 67601

ph: 785-625-4778 fax: 785-625-5620

Printed: 2012.08.17 @ 10:51:52



TRILOBITE TESTING, INC.

DRILL STEM TEST REPORT

Murfin Drilling Co.
 250 N Water STE #300
 Wichita, KS 67202
 ATTN: Jeff Christian

18-2s-29w Decatur, KS
Brewer #1-18
 Job Ticket: 45646 **DST#: 3**
 Test Start: 2012.08.15 @ 16:45:00

GENERAL INFORMATION:

Formation: **LKC "H&J"**
 Deviated: No Whipstock: ft (KB)
 Test Type: Conventional Bottom Hole (Initial)
 Time Tool Opened: 18:59:45 Tester: Kevin Mack
 Time Test Ended: 01:08:45 Unit No: 43
 Interval: **3899.00 ft (KB) To 3962.00 ft (KB) (TVD)** Reference Elevations: 2795.00 ft (KB)
 Total Depth: 3962.00 ft (KB) (TVD) 2790.00 ft (CF)
 Hole Diameter: 7.88 inches Hole Condition: Good KB to GR/CF: 5.00 ft

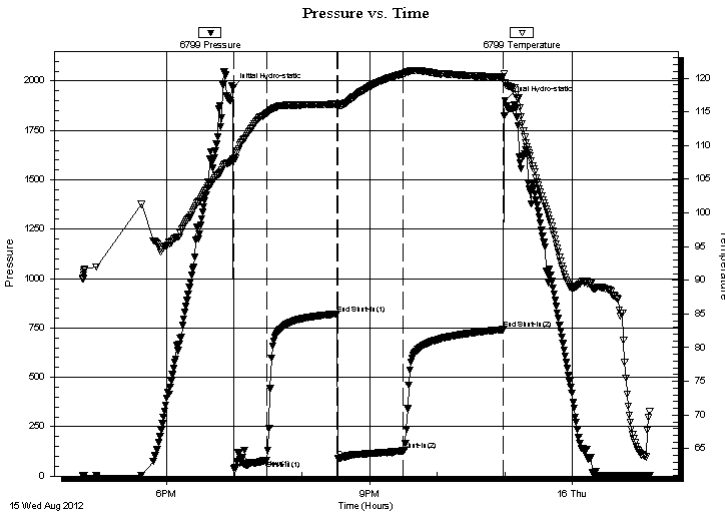
Serial #: 6799

Inside

Press @ Run Depth: 128.95 psig @ 3900.00 ft (KB) Capacity: 8000.00 psig
 Start Date: 2012.08.15 End Date: 2012.08.16 Last Calib.: 2012.08.16
 Start Time: 16:45:05 End Time: 01:08:44 Time On Btm: 2012.08.15 @ 18:58:45
 Time Off Btm: 2012.08.15 @ 23:00:30

TEST COMMENT: 30 - IF- Surface Blow built to 4 1/2"
 60 - IS- No Return
 60 - FF- Blow Started at 12 min. Built to 5"
 90 - FS- No Return

PRESSURE SUMMARY



Time (Min.)	Pressure (psig)	Temp (deg F)	Annotation
0	1967.16	108.02	Initial Hydro-static
1	41.07	107.84	Open To Flow (1)
30	81.09	114.79	Shut-In(1)
92	821.71	116.14	End Shut-In(1)
93	88.11	115.90	Open To Flow (2)
151	128.95	120.64	Shut-In(2)
240	742.76	120.19	End Shut-In(2)
242	1901.28	119.38	Final Hydro-static

Recovery

Length (ft)	Description	Volume (bbl)
120.00	MW 10M 90W	0.59
122.00	OCWM 5o 85M 10W	1.11
1.00	Free oil 100o	0.01

Gas Rates

	Choke (inches)	Pressure (psig)	Gas Rate (Mcf/d)



**TRILOBITE
TESTING, INC.**

DRILL STEM TEST REPORT

TOOL DIAGRAM

Murfin Drilling Co.

18-2s-29w Decatur,KS

250 N Water STE #300
Wichita, KS 67202

Brewer #1-18

Job Ticket: 45646

DST#: 3

ATTN: Jeff Christian

Test Start: 2012.08.15 @ 16:45:00

Tool Information

Drill Pipe:	Length: 3694.00 ft	Diameter: 3.80 inches	Volume: 51.82 bbl	Tool Weight: 2500.00 lb
Heavy Wt. Pipe:	Length: 0.00 ft	Diameter: 0.00 inches	Volume: 0.00 bbl	Weight set on Packer: 25000.00 lb
Drill Collar:	Length: 186.00 ft	Diameter: 2.25 inches	Volume: 0.91 bbl	Weight to Pull Loose: 56000.00 lb
			<u>Total Volume: 52.73 bbl</u>	Tool Chased ft
Drill Pipe Above KB:	10.00 ft			String Weight: Initial 54000.00 lb
Depth to Top Packer:	3899.00 ft			Final 54000.00 lb
Depth to Bottom Packer:	ft			
Interval between Packers:	63.00 ft			
Tool Length:	92.00 ft			
Number of Packers:	2	Diameter: 6.75 inches		

Tool Comments:

Tool Description	Length (ft)	Serial No.	Position	Depth (ft)	Accum. Lengths
------------------	-------------	------------	----------	------------	----------------

Change Over Sub	1.00			3871.00	
Shut In Tool	5.00			3876.00	
Hydraulic tool	5.00			3881.00	
Jars	5.00			3886.00	
Safety Joint	3.00			3889.00	
Packer	5.00			3894.00	29.00 Bottom Of Top Packer
Packer	5.00			3899.00	
Stubb	1.00			3900.00	
Recorder	0.00	8648	Inside	3900.00	
Recorder	0.00	6799	Inside	3900.00	
Perforations	23.00			3923.00	
Change Over Sub	1.00			3924.00	
Drill Pipe	32.00			3956.00	
Change Over Sub	1.00			3957.00	
Bullnose	5.00			3962.00	63.00 Bottom Packers & Anchor

Total Tool Length: 92.00



**TRILOBITE
TESTING, INC.**

DRILL STEM TEST REPORT

FLUID SUMMARY

Murfin Drilling Co.

18-2s-29w Decatur,KS

250 N Water STE #300
Wichita, KS 67202

Brewer #1-18

Job Ticket: 45646

DST#: 3

ATTN: Jeff Christian

Test Start: 2012.08.15 @ 16:45:00

Mud and Cushion Information

Mud Type: Gel Chem

Cushion Type:

Oil API:

deg API

Mud Weight: 9.00 lb/gal

Cushion Length:

ft

Water Salinity:

45000 ppm

Viscosity: 59.00 sec/qt

Cushion Volume:

bbbl

Water Loss: 5.59 in³

Gas Cushion Type:

Resistivity: 0.00 ohm.m

Gas Cushion Pressure:

psig

Salinity: 1700.00 ppm

Filter Cake: 2.00 inches

Recovery Information

Recovery Table

Length ft	Description	Volume bbl
120.00	MW 10M 90W	0.590
122.00	OCWM 5o 85M 10W	1.110
1.00	Free oil 100o	0.014

Total Length: 243.00 ft

Total Volume: 1.714 bbl

Num Fluid Samples: 0

Num Gas Bombs: 0

Serial #:

Laboratory Name:

Laboratory Location:

Recovery Comments:

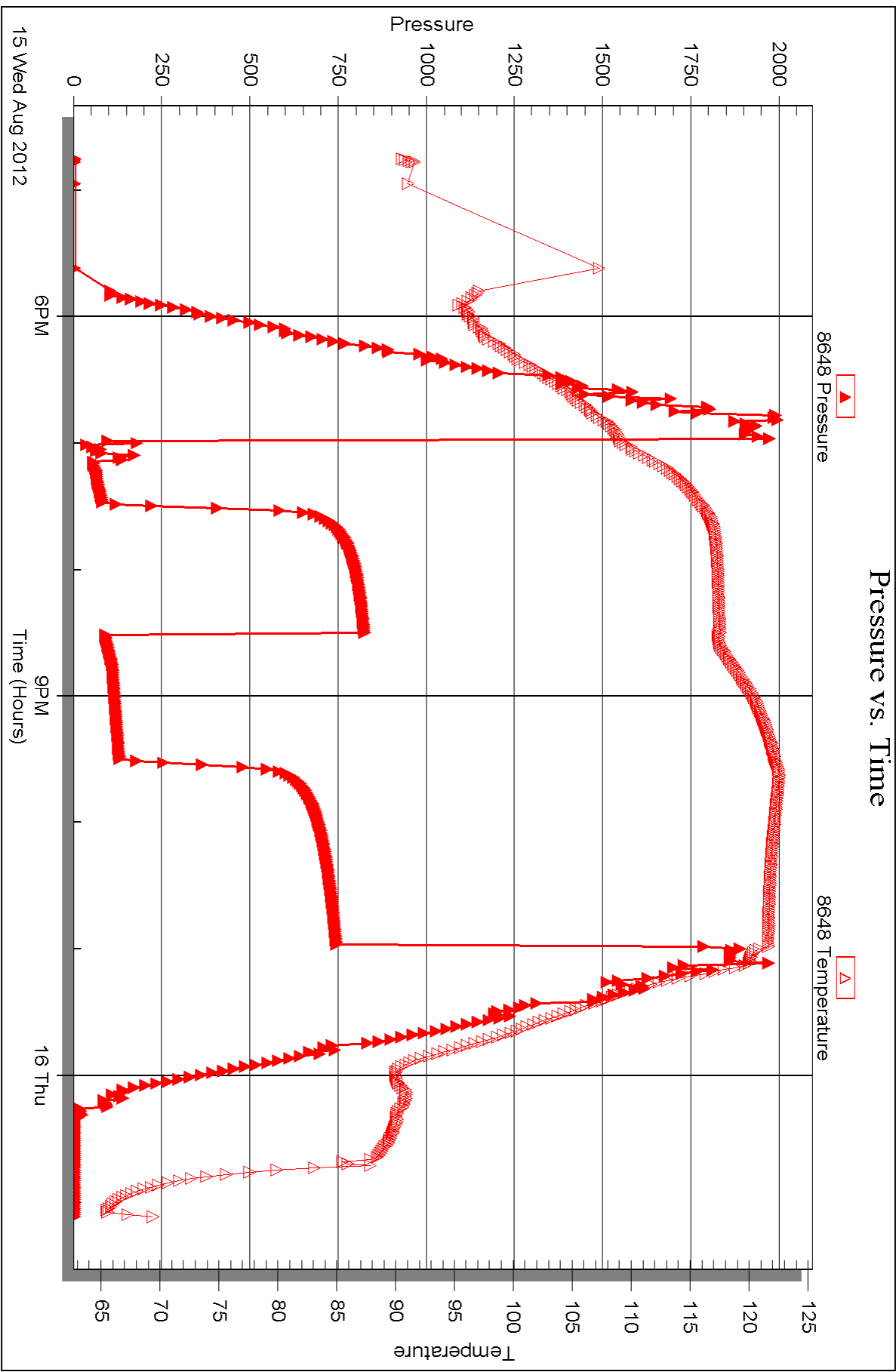
Serial #: 8648

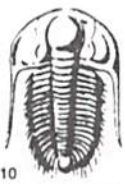
Inside

Murfin Drilling Co.

Brewer #1-18

DST Test Number: 3





TRILOBITE TESTING INC.

P.O. Box 1733 • Hays, Kansas 67601

Test Ticket

NO. 45644

Well Name & No. Brewer # 1-18 Test No. 1 Date 8-14-12
 Company Murfin Drilling Co. Elevation 2795 KB 2790 GL
 Address 250 N Water STE # 300 Wichita, KS 67202
 Co. Rep / Geo. Jeff Christian Rig Murfin # 8
 Location: Sec. 18 Twp. 2s Rge. 29 W Co. Decatur State KS

Interval Tested 3760-3812 Zone Tested LKC "A"
 Anchor Length 52 Drill Pipe Run 3570 Mud Wt. 8.9
 Top Packer Depth 3756 Drill Collars Run 186 Vis 65
 Bottom Packer Depth 3760 Wt. Pipe Run Ø WL 5.2
 Total Depth 3812 Chlorides 1,100 ppm System LCM 6#

Blow Description IF- 1/2" Blow did not build or die
IS- NO Return
FF- NO Blow
FS- NO Return

Rec	Feet of	%gas	%oil	%water	%mud
<u>5</u>	<u>Mud</u>			<u>100</u>	
Rec	Feet of	%gas	%oil	%water	%mud
Rec	Feet of	%gas	%oil	%water	%mud
Rec	Feet of	%gas	%oil	%water	%mud

Rec Total 5 BHT 113 Gravity - API RW - @ - °F Chlorides - ppm

(A) Initial Hydrostatic <u>1883</u>	<input checked="" type="checkbox"/> Test <u>1150</u>	T-On Location <u>6:30 AM</u>
(B) First Initial Flow <u>20</u>	<input checked="" type="checkbox"/> Jars <u>250</u>	T-Started <u>7:27 AM</u>
(C) First Final Flow <u>21</u>	<input checked="" type="checkbox"/> Safety Joint <u>75</u>	T-Open <u>9:27 AM</u>
(D) Initial Shut-In <u>190</u>	<input checked="" type="checkbox"/> Circ Sub <u>NIL</u>	T-Pulled <u>12:27 PM</u>
(E) Second Initial Flow <u>22</u>	<input type="checkbox"/> Hourly Standby	T-Out <u>2:25 PM</u>
(F) Second Final Flow <u>23</u>	<input checked="" type="checkbox"/> Mileage <u>22RT</u> 34.10	Comments
(G) Final Shut-In <u>100</u>	<input type="checkbox"/> Sampler	
(H) Final Hydrostatic <u>1872</u>	<input type="checkbox"/> Straddle	<input type="checkbox"/> Ruined Shale Packer
Initial Open <u>30</u>	<input type="checkbox"/> Shale Packer	<input type="checkbox"/> Ruined Packer
Initial Shut-In <u>60</u>	<input type="checkbox"/> Extra Packer	<input type="checkbox"/> Extra Copies
Final Flow <u>30</u>	<input type="checkbox"/> Extra Recorder	Sub Total <u>0</u>
Final Shut-In <u>60</u>	<input type="checkbox"/> Day Standby	Total <u>1509.10</u>
	<input type="checkbox"/> Accessibility	MP/DST Disc't
	Sub Total <u>1509.10</u>	

Approved By _____ Our Representative

Trilobite Testing Inc. shall not be liable for damaged of any kind of the property or personnel of the one for whom a test is made, or for any loss suffered or sustained, directly or indirectly, through the use of its equipment, or its statements or opinion concerning the results of any test, tools lost or damaged in the hole shall be paid for at cost by the party for whom the test is made.



TRILOBITE TESTING INC.

P.O. Box 1733 • Hays, Kansas 67601

Test Ticket

NO. 45645

4/10

Well Name & No. Brewer #1-18 Test No. 2 Date 8-14-12
 Company Murfin Drilling Co. Elevation 2795 KB 2790 GL
 Address 250 N Water STE # 300 Wichita, KS 67202
 Co. Rep / Geo. Jeff Christian Rig Murfin #8
 Location: Sec. 18 Twp. 2s Rge. 29W Co. Decatur State KS

Interval Tested 3812-3900 Zone Tested LKC "D#6"
 Anchor Length 88' Drill Pipe Run 3630 Mud Wt. 9.0
 Top Packer Depth 3808 Drill Collars Run 186 Vis 69
 Bottom Packer Depth 3812 Wt. Pipe Run Ø WL 60
 Total Depth 3900 Chlorides 1,200 ppm System LCM 6#

Blow Description IF- BOB in 13 min
IS- No Return
FF- BOB in 12 min
FS- Weak surface Return started at 20 min Built to 2 1/2"

Rec	Feet of	%gas	%oil	%water	%mud
<u>60</u>	<u>Free oil</u>	<u>100</u>			
<u>126</u>	<u>60CM</u>	<u>20</u>		<u>80</u>	
<u>252</u>	<u>60CLM</u>	<u>15</u>	<u>10</u>	<u>15</u>	<u>60</u>
<u>186</u>	<u>MW</u>		<u>90</u>	<u>10</u>	

Rec Total 624 BHT 119 Gravity 36 API RW .269 @ 70 °F Chlorides 27000 ppm

(A) Initial Hydrostatic 1872 Test 1150 T-On Location 10:45 PM
 (B) First Initial Flow 63 Jars 250 T-Started 11:15 PM
 (C) First Final Flow 174 Safety Joint 75 T-Open 1:41 AM
 (D) Initial Shut-In 277 Circ Sub NIC T-Pulled 5:41 AM
 (E) Second Initial Flow 179 Hourly Standby T-Out 8:04 AM
 (F) Second Final Flow 302 Mileage 22RT 34.10 Comments 310' GIP
 (G) Final Shut-In 367 Sampler
 (H) Final Hydrostatic 1745 Straddle Ruined Shale Packer
 Shale Packer Ruined Packer
 Extra Packer Extra Copies

Initial Open 30
 Initial Shut-In 60
 Final Flow 60
 Final Shut-In 96

Sub Total 1509.10
 Total 1509.10
 MP/DST Disc't

Approved By _____ Our Representative

TriLOBITE Testing Inc. shall not be liable for damaged of any kind of the property or personnel of the one for whom a test is made, or for any loss suffered or sustained, directly or indirectly, through the use of its equipment, or its statements or opinion concerning the results of any test, tools lost or damaged in the hole shall be paid for at cost by the party for whom the test is made.



TRILOBITE TESTING INC.

P.O. Box 1733 • Hays, Kansas 67601

Test Ticket

NO. 45646

4/10

Well Name & No. <u>Brewer #1-18</u>	Test No. <u>3</u>	Date <u>8-15-12</u>
Company <u>Murfin Drilling Co.</u>	Elevation <u>2795</u>	KB <u>2790</u> GL
Address <u>250 N Water STE # 300 Wichita, KS 67202</u>		
Co. Rep / Geo. <u>Jeff Christian</u>	Rig <u>Murfin #8</u>	
Location: Sec. <u>18</u>	Twp. <u>2s</u>	Rge. <u>29w</u> Co. <u>Decatur</u> State <u>KS</u>

Interval Tested <u>3899-3962</u>	Zone Tested <u>LILC "H,5"</u>
Anchor Length <u>63'</u>	Drill Pipe Run <u>3694</u> Mud Wt. <u>9.0</u>
Top Packer Depth <u>3895</u>	Drill Collars Run <u>186'</u> Vis <u>59</u>
Bottom Packer Depth <u>3899</u>	Wt. Pipe Run <u>Ø</u> WL <u>5.6</u>
Total Depth <u>3962</u>	Chlorides <u>1,700</u> ppm System LCM <u>6#</u>
Blow Description <u>IF - Surface Blow built to 4 1/2"</u>	
<u>IS - NO Return</u>	
<u>FF - Blow started at 12 min. Built to 5"</u>	
<u>FS - NO Return</u>	

Rec	Feet of	%gas	%oil	%water	%mud
<u>1</u>	<u>Free oil</u>	<u>100</u>	<u>0</u>	<u>0</u>	<u>0</u>
<u>122</u>	<u>OLWM</u>	<u>5</u>	<u>10</u>	<u>85</u>	<u>0</u>
<u>120</u>	<u>MW</u>	<u>0</u>	<u>90</u>	<u>10</u>	<u>0</u>
Rec	Feet of	%gas	%oil	%water	%mud
Rec	Feet of	%gas	%oil	%water	%mud

Rec Total <u>243</u>	BHT <u>120</u>	Gravity <u>—</u>	API RW <u>•16 @ 77</u>	F Chlorides <u>45000</u> ppm
(A) Initial Hydrostatic <u>1967</u>	<input checked="" type="checkbox"/> Test <u>1150</u>	T-On Location <u>3:50 PM</u>		
(B) First Initial Flow <u>41</u>	<input checked="" type="checkbox"/> Jars <u>250</u>	T-Started <u>4:45 PM</u>		
(C) First Final Flow <u>81</u>	<input checked="" type="checkbox"/> Safety Joint <u>75</u>	T-Open <u>6:50 PM</u>		
(D) Initial Shut-In <u>821</u>	<input checked="" type="checkbox"/> Circ Sub <u>N/C</u>	T-Pulled <u>10:50 PM</u>		
(E) Second Initial Flow <u>88</u>	<input type="checkbox"/> Hourly Standby	T-Out <u>1:00 AM</u>		
(F) Second Final Flow <u>128</u>	<input checked="" type="checkbox"/> Mileage <u>22 RT X2</u>	Comments <u>Loaded tools 7:00 PM 8-16-12</u>		
(G) Final Shut-In <u>742</u>	<input type="checkbox"/> Sampler			
(H) Final Hydrostatic <u>1901</u>	<input type="checkbox"/> Straddle	<input type="checkbox"/> Ruined Shale Packer		
Initial Open <u>30</u>	<input type="checkbox"/> Shale Packer	<input type="checkbox"/> Ruined Packer		
Initial Shut-In <u>60</u>	<input type="checkbox"/> Extra Packer	<input type="checkbox"/> Extra Copies		
Final Flow <u>60</u>	<input type="checkbox"/> Extra Recorder	Sub Total <u>0</u>		
Final Shut-In <u>96</u>	<input type="checkbox"/> Day Standby	Total <u>1543.20</u>		
	<input type="checkbox"/> Accessibility	MP/DST Disc't		
	Sub Total <u>1543.20</u>			

Approved By _____

Our Representative 

TriLOBITE Testing Inc. shall not be liable for damaged of any kind of the property or personnel of the one for whom a test is made, or for any loss suffered or sustained, directly or indirectly, through the use of its equipment, or its statements or opinion concerning the results of any test, tools lost or damaged in the hole shall be paid for at cost by the party for whom the test is made.