

Thomas J. Funk
Petroleum Geologist

Geologists Report
Drilling Time and Sample Log

OPERATOR Murfin Drilling Co., Inc
LEASE Edwards
WELL NO #1-17

FIELD Wildcat
LOCATION 660' FNL & 1850' FEL
SEC. 17
COUNTY Scott

API 15-171-20904
TWP. 16S
RGE. 32W
STATE Kansas

ELEVATION
KB 3013'

DF
GL 3002
Measurements Are All From **KB**

CASING RECORD
SURFACE
8 5/8" at 226'KB w/170x
PRODUCTION

CONTRACTOR Murfin Dng Co
COMP 8/30/2012
LOG TD 4784
LOG TD 4785
LOG TD 4785
LOG TD 4785

CEOLOGICAL SUPERVISION FROM 3875 TO 4785
MUD UP 3200
TYPE MUD Chemical

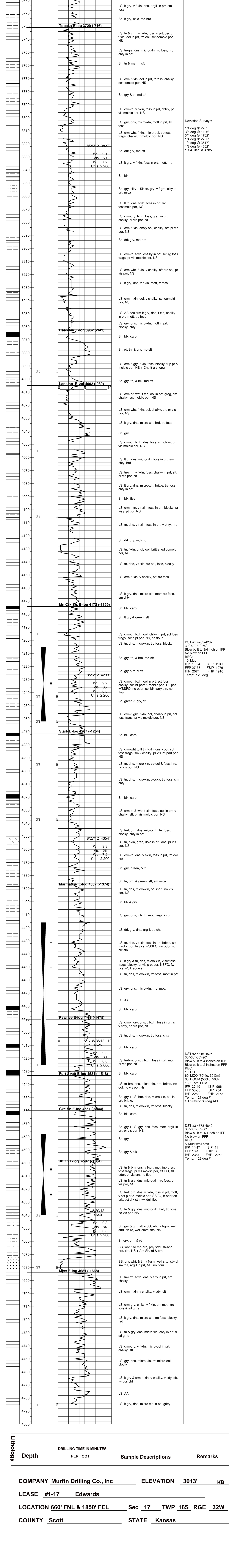
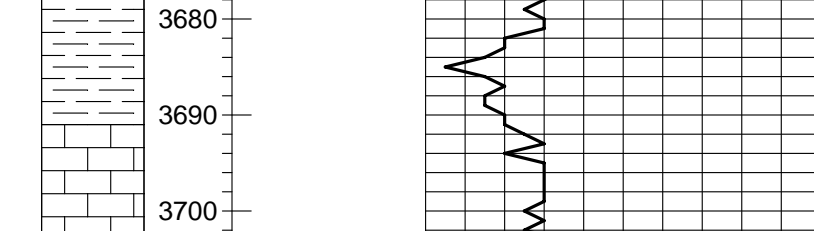
FORMATION	LOG TOP DATUM	SAMPLE TOP DATUM	STRUCT COMP
Anyhrite	2382 (+461)	2355 (+458)	+4
B/Anyhrite	2417 (+536)	2418 (+534)	+1
Topeka	3729 (-716)	3731 (-718)	+1
Healdene Sh	3962 (-949)	3964 (-951)	Flat
Lansing	4002 (-989)	4005 (-992)	+3
Murde Creek	4172 (-1159)	4174 (-1161)	+6
Stark Sh	4267 (-1254)	4271 (-1258)	-1
Marmaton	4387 (-1374)	4388 (-1375)	-2
Pawnee	4489 (-1475)	4490 (-1477)	-2
Cherokee Sh	4557 (-1544)	4560 (-1547)	-3
Johnson Zone	4597 (-1584)	4600 (-1587)	-4
Mississippi	4681 (-1668)	4684 (-1671)	-10

ELECTRICAL SURVEYS
Pioneer Energy Services
DIL
MEL
DUCP
BHCS

REFERENCE WELL FOR STRUCTURAL COMPARISON: Murfin Dng Co #1-17 Schowalter

Daily Progress	NO	Size	Make	Type	Depth Out	Feet	Hours
8/22/12	Spud	1	12 1/4 GMS	RR	226	226	1
8/23/12	604	2	7 7/8" Smith	M1606	3617	3391	43
8/24/12	2673	3	7 7/8" Smith	F27V1	3670	4785	1688
8/25/12							72
8/26/12							
8/27/12							
8/28/12							
8/29/12							
8/30/12							

LEGEND



COMPANY Murfin Drilling Co., Inc
ELEVATION 3013' KB
LEASE #1-17 Edwards
LOCATION 660' FNL & 1850' FEL
Sec 17 **TWP** 16S **RGE** 32W
COUNTY Scott **STATE** Kansas