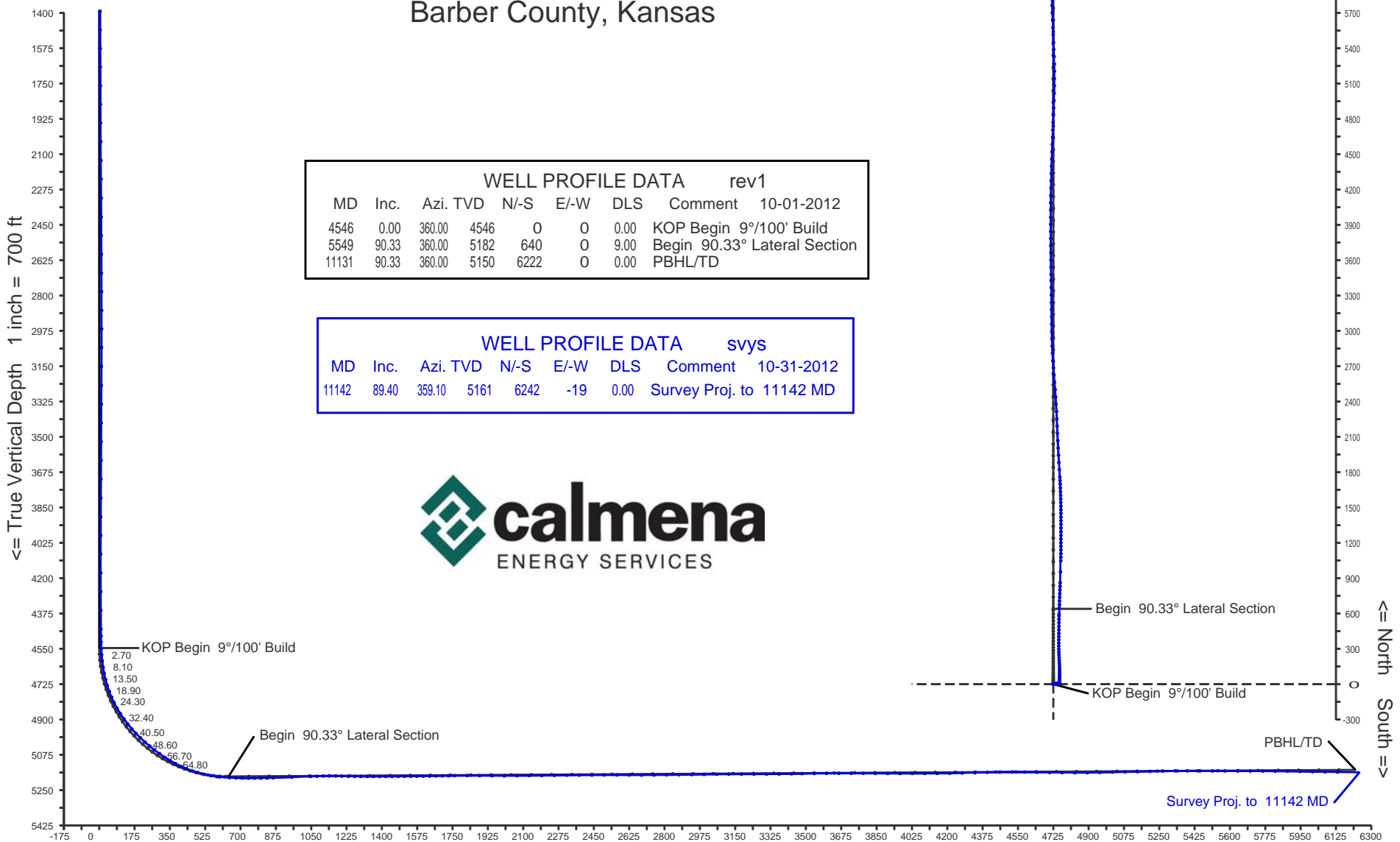


Osage Resources

Osage No. 25-03 HC

Barber County, Kansas



WELL PROFILE DATA rev1							
MD	Inc.	Azi.	TVD	N-S	E-W	DLS	Comment 10-01-2012
4546	0.00	360.00	4546	0	0	0.00	KOP Begin 9°/100' Build
5549	90.33	360.00	5182	640	0	9.00	Begin 90.33° Lateral Section
11131	90.33	360.00	5150	6222	0	0.00	PBHL/TD

WELL PROFILE DATA svys							
MD	Inc.	Azi.	TVD	N-S	E-W	DLS	Comment 10-31-2012
11142	89.40	359.10	5161	6242	-19	0.00	Survey Proj. to 11142 MD



Vertical Section on 0 deg azimuth with reference 0.00 N, 0.00 E

Calmena Energy Services

Company: Osage Resources
 Well: Osage No. 25-03 HC
 Location:

Date: 31-Oct-2012
 Surveys
 Page 1
 Job# : 6785

MD (feet)	Inclination (degrees)	Azimuth (degrees)	TVD RKB (feet)	N-S (feet)	E-W (feet)	DLS (deg/100')	VS @ 0.00° Az (feet)	Comments
Surface Location								RKB=1848
0.00	0.00	0.00	0.00	0.00	0.00	0.00	0.00	
249.00	1.30	78.10	248.98	0.58	2.76	0.52	0.58	
280.00	1.40	78.10	279.97	0.73	3.48	0.32	0.73	
311.00	1.30	76.40	310.96	0.89	4.19	0.35	0.89	
342.00	0.90	24.90	341.96	1.20	4.64	3.29	1.20	
374.00	1.30	76.70	373.95	1.51	5.09	3.21	1.51	
405.00	1.30	87.60	404.94	1.60	5.79	0.80	1.60	
436.00	1.30	82.50	435.94	1.67	6.49	0.37	1.67	
467.00	1.30	78.30	466.93	1.78	7.18	0.31	1.78	
560.00	1.50	85.00	559.90	2.10	9.43	0.28	2.10	
653.00	1.70	79.00	652.86	2.47	11.99	0.28	2.47	
746.00	1.70	89.70	745.82	2.74	14.73	0.34	2.74	
838.00	1.80	91.80	837.78	2.70	17.54	0.13	2.70	
931.00	1.70	99.20	930.74	2.44	20.36	0.27	2.44	
1023.00	1.70	97.80	1022.70	2.03	23.06	0.05	2.03	
1115.00	1.70	97.30	1114.66	1.68	25.76	0.02	1.68	
1207.00	1.20	75.30	1206.63	1.75	28.05	0.80	1.75	
1300.00	1.10	68.80	1299.61	2.32	29.82	0.18	2.32	
1392.00	1.20	72.20	1391.59	2.93	31.56	0.13	2.93	
1484.00	1.00	74.40	1483.57	3.44	33.25	0.22	3.44	
1577.00	1.00	79.50	1576.56	3.81	34.83	0.10	3.81	
1669.00	0.90	82.90	1668.55	4.04	36.34	0.12	4.04	
1761.00	1.10	89.20	1760.53	4.14	37.94	0.25	4.14	
1853.00	1.10	40.70	1852.52	4.83	39.40	0.98	4.83	
1946.00	1.10	48.10	1945.50	6.10	40.64	0.15	6.10	
2038.00	0.80	55.50	2037.49	7.05	41.83	0.35	7.05	
2131.00	0.60	45.80	2130.48	7.76	42.71	0.25	7.76	
2224.00	0.50	40.00	2223.48	8.41	43.32	0.12	8.41	
2318.00	0.40	43.00	2317.47	8.96	43.81	0.11	8.96	
2410.00	0.40	71.50	2409.47	9.30	44.34	0.21	9.30	

Calmena Energy Services

Company: Osage Resources
 Well: Osage No. 25-03 HC
 Location:

Date: 31-Oct-2012
 Surveys
 Page 2
 Job# : 6785

MD (feet)	Inclination (degrees)	Azimuth (degrees)	TVD RKB (feet)	N-S (feet)	E-W (feet)	DLS (deg/100')	VS @ 0.00° Az (feet)	Comments
2503.00	0.50	68.80	2502.47	9.55	45.02	0.11	9.55	
2596.00	0.40	43.20	2595.46	9.93	45.62	0.24	9.93	
2689.00	0.30	34.20	2688.46	10.37	45.98	0.12	10.37	
2781.00	0.50	49.80	2780.46	10.83	46.42	0.25	10.83	
2874.00	0.40	44.40	2873.46	11.32	46.96	0.12	11.32	
2966.00	0.30	146.50	2965.46	11.35	47.32	0.60	11.35	
3058.00	0.50	202.90	3057.46	10.78	47.30	0.45	10.78	
3151.00	0.20	185.70	3150.45	10.25	47.12	0.34	10.25	
3246.00	0.30	209.60	3245.45	9.87	46.98	0.15	9.87	
3339.00	0.20	184.30	3338.45	9.49	46.85	0.16	9.49	
3432.00	0.30	181.30	3431.45	9.09	46.83	0.11	9.09	
3524.00	0.30	192.70	3523.45	8.61	46.77	0.06	8.61	
3617.00	0.30	238.40	3616.45	8.25	46.51	0.25	8.25	
3710.00	0.50	144.40	3709.45	7.79	46.54	0.65	7.79	
3803.00	0.70	117.50	3802.44	7.20	47.28	0.37	7.20	
3896.00	0.60	100.30	3895.44	6.85	48.26	0.23	6.85	
3989.00	0.30	84.30	3988.43	6.78	48.99	0.35	6.78	
4081.00	0.40	81.80	4080.43	6.85	49.54	0.11	6.85	
4174.00	0.30	66.70	4173.43	7.00	50.09	0.15	7.00	
4267.00	0.20	56.00	4266.43	7.18	50.45	0.12	7.18	
4360.00	0.30	47.20	4359.43	7.44	50.76	0.11	7.44	
4453.00	0.40	35.40	4452.43	7.87	51.13	0.13	7.87	
4487.00	0.70	17.30	4486.42	8.16	51.26	1.01	8.16	
4518.00	1.10	6.60	4517.42	8.64	51.35	1.39	8.64	
4549.00	2.60	358.70	4548.40	9.64	51.37	4.90	9.64	
4580.00	4.30	1.90	4579.35	11.50	51.39	5.52	11.50	
4611.00	6.30	2.60	4610.21	14.37	51.50	6.45	14.37	
4642.00	8.60	2.80	4640.95	18.38	51.69	7.42	18.38	
4673.00	11.30	2.60	4671.48	23.73	51.95	8.71	23.73	
4704.00	14.40	2.10	4701.70	30.62	52.22	10.01	30.62	

Calmena Energy Services

Company: Osage Resources
 Well: Osage No. 25-03 HC
 Location:

Date: 31-Oct-2012
 Surveys
 Page 3
 Job# : 6785

MD (feet)	Inclination (degrees)	Azimuth (degrees)	TVD RKB (feet)	N-S (feet)	E-W (feet)	DLS (deg/100')	VS @ 0.00° Az (feet)	Comments
4735.00	17.40	1.90	4731.51	39.10	52.52	9.68	39.10	
4766.00	20.50	2.10	4760.83	49.16	52.87	10.00	49.16	
4797.00	23.40	2.20	4789.58	60.74	53.31	9.36	60.74	
4827.00	26.40	1.70	4816.78	73.36	53.73	10.02	73.36	
4858.00	29.50	0.60	4844.17	87.89	54.02	10.14	87.89	
4889.00	32.40	359.80	4870.75	103.83	54.07	9.45	103.83	
4921.00	35.50	358.70	4897.29	121.70	53.83	9.88	121.70	
4952.00	38.30	357.80	4922.08	140.30	53.26	9.20	140.30	
4983.00	41.20	357.30	4945.91	160.10	52.41	9.41	160.10	
5014.00	44.00	357.30	4968.73	181.06	51.42	9.03	181.06	
5045.00	46.70	357.30	4990.51	203.09	50.38	8.71	203.09	
5076.00	48.70	357.70	5011.37	225.99	49.38	6.52	225.99	
5107.00	50.60	357.70	5031.44	249.60	48.43	6.13	249.60	
5137.00	52.20	358.40	5050.16	273.03	47.64	5.64	273.03	
5168.00	54.20	358.90	5068.73	297.84	47.05	6.58	297.84	
5200.00	56.40	359.40	5086.94	324.15	46.66	6.99	324.15	
5231.00	59.10	359.90	5103.48	350.36	46.50	8.82	350.36	
5262.00	62.10	0.60	5118.70	377.36	46.62	9.88	377.36	
5292.00	65.40	0.80	5131.97	404.26	46.95	11.02	404.26	
5322.00	68.10	1.20	5143.81	431.82	47.44	9.08	431.82	
5354.00	71.30	0.60	5154.91	461.83	47.91	10.15	461.83	
5383.00	73.90	0.50	5163.58	489.50	48.17	8.97	489.50	
5415.00	76.70	0.10	5171.70	520.44	48.33	8.83	520.44	
5447.00	79.70	0.50	5178.24	551.76	48.50	9.45	551.76	
5477.00	82.70	1.20	5182.83	581.40	48.94	10.26	581.40	
5491.00	84.20	1.50	5184.43	595.31	49.27	10.92	595.31	
5541.00	87.80	2.20	5187.92	645.15	50.88	7.33	645.15	
5572.00	88.40	2.20	5188.94	676.11	52.07	1.94	676.11	
5603.00	88.70	1.90	5189.73	707.08	53.17	1.37	707.08	
5634.00	89.20	2.20	5190.30	738.06	54.28	1.88	738.06	

Calmena Energy Services

Company: Osage Resources
 Well: Osage No. 25-03 HC
 Location:

Date: 31-Oct-2012
 Surveys
 Page 4
 Job# : 6785

MD (feet)	Inclination (degrees)	Azimuth (degrees)	TVD RKB (feet)	N-S (feet)	E-W (feet)	DLS (deg/100')	VS @ 0.00° Az (feet)	Comments
5665.00	90.00	2.20	5190.51	769.03	55.47	2.58	769.03	
5696.00	90.90	2.10	5190.27	800.01	56.64	2.92	800.01	
5727.00	91.40	2.10	5189.65	830.98	57.77	1.61	830.98	
5758.00	91.60	1.90	5188.84	861.95	58.85	0.91	861.95	
5850.00	92.60	1.50	5185.47	953.85	61.58	1.17	953.85	
5943.00	91.80	1.00	5181.90	1046.76	63.61	1.01	1046.76	
5974.00	92.00	0.80	5180.87	1077.74	64.09	0.91	1077.74	
6005.00	92.20	0.50	5179.73	1108.71	64.45	1.16	1108.71	
6036.00	90.00	0.10	5179.14	1139.71	64.61	7.21	1139.71	
6067.00	88.40	359.90	5179.57	1170.70	64.61	5.20	1170.70	
6098.00	88.40	359.90	5180.43	1201.69	64.55	0.00	1201.69	
6129.00	88.70	0.10	5181.22	1232.68	64.55	1.16	1232.68	
6161.00	89.30	359.80	5181.78	1264.68	64.53	2.10	1264.68	
6192.00	89.90	0.50	5181.99	1295.67	64.61	2.97	1295.67	
6223.00	90.10	0.50	5181.99	1326.67	64.88	0.65	1326.67	
6254.00	90.00	0.50	5181.97	1357.67	65.15	0.32	1357.67	
6284.00	90.00	359.90	5181.97	1387.67	65.25	2.00	1387.67	
6315.00	90.20	359.80	5181.91	1418.67	65.17	0.72	1418.67	
6347.00	90.20	359.80	5181.80	1450.67	65.06	0.00	1450.67	
6377.00	90.40	359.20	5181.64	1480.67	64.80	2.11	1480.67	
6408.00	90.50	359.10	5181.40	1511.67	64.34	0.46	1511.67	
6439.00	90.70	358.70	5181.08	1542.66	63.74	1.44	1542.66	
6470.00	90.60	358.90	5180.72	1573.65	63.09	0.72	1573.65	
6501.00	90.80	358.50	5180.35	1604.64	62.39	1.44	1604.64	
6533.00	91.00	358.40	5179.84	1636.62	61.53	0.70	1636.62	
6564.00	90.70	357.50	5179.38	1667.60	60.42	3.06	1667.60	
6595.00	90.70	356.80	5179.00	1698.56	58.88	2.26	1698.56	
6626.00	90.70	356.80	5178.63	1729.51	57.15	0.00	1729.51	
6656.00	90.90	357.10	5178.21	1759.46	55.55	1.20	1759.46	
6719.00	90.00	356.20	5177.71	1822.35	51.87	2.02	1822.35	

Calmena Energy Services

Company: Osage Resources
 Well: Osage No. 25-03 HC
 Location:

Date: 31-Oct-2012
 Surveys
 Page 5
 Job# : 6785

MD (feet)	Inclination (degrees)	Azimuth (degrees)	TVD RKB (feet)	N-S (feet)	E-W (feet)	DLS (deg/100')	VS @ 0.00° Az (feet)	Comments
6780.00	89.20	356.60	5178.14	1883.23	48.04	1.47	1883.23	
6842.00	89.50	356.80	5178.84	1945.12	44.47	0.58	1945.12	
6903.00	90.20	357.00	5179.00	2006.03	41.17	1.19	2006.03	
6965.00	91.20	357.10	5178.24	2067.94	37.98	1.62	2067.94	
7027.00	90.00	357.80	5177.59	2129.88	35.22	2.24	2129.88	
7089.00	90.40	357.70	5177.38	2191.83	32.79	0.67	2191.83	
7151.00	90.70	357.50	5176.78	2253.77	30.19	0.58	2253.77	
7213.00	90.90	357.10	5175.92	2315.70	27.27	0.72	2315.70	
7275.00	90.20	356.40	5175.32	2377.59	23.76	1.60	2377.59	
7337.00	90.20	356.20	5175.11	2439.46	19.76	0.32	2439.46	
7399.00	90.70	356.10	5174.62	2501.32	15.59	0.82	2501.32	
7461.00	89.70	355.00	5174.40	2563.13	10.78	2.40	2563.13	
7522.00	89.50	355.40	5174.83	2623.92	5.68	0.73	2623.92	
7584.00	89.80	356.20	5175.21	2685.75	1.14	1.38	2685.75	
7646.00	90.70	356.60	5174.94	2747.63	-2.76	1.59	2747.63	
7708.00	91.10	357.00	5173.96	2809.52	-6.22	0.91	2809.52	
7770.00	90.40	358.00	5173.15	2871.46	-8.92	1.97	2871.46	
7832.00	90.60	357.70	5172.61	2933.41	-11.25	0.58	2933.41	
7894.00	90.50	359.40	5172.01	2995.38	-12.81	2.75	2995.38	
7956.00	90.90	359.80	5171.26	3057.38	-13.25	0.91	3057.38	
8017.00	90.30	359.60	5170.62	3118.37	-13.57	1.04	3118.37	
8079.00	89.90	359.40	5170.51	3180.37	-14.11	0.72	3180.37	
8141.00	90.00	359.20	5170.56	3242.37	-14.87	0.36	3242.37	
8203.00	90.20	359.10	5170.46	3304.36	-15.79	0.36	3304.36	
8266.00	91.20	358.70	5169.69	3367.34	-16.99	1.71	3367.34	
8327.00	90.90	359.20	5168.57	3428.32	-18.11	0.96	3428.32	
8379.00	90.50	359.90	5167.93	3480.32	-18.52	1.55	3480.32	
8440.00	90.80	359.60	5167.24	3541.31	-18.79	0.70	3541.31	
8501.00	90.30	359.60	5166.66	3602.31	-19.21	0.82	3602.31	
8562.00	90.00	359.40	5166.50	3663.30	-19.75	0.59	3663.30	

Calmena Energy Services

Company: Osage Resources
 Well: Osage No. 25-03 HC
 Location:

Date: 31-Oct-2012
 Surveys
 Page 6
 Job# : 6785

MD (feet)	Inclination (degrees)	Azimuth (degrees)	TVD RKB (feet)	N-S (feet)	E-W (feet)	DLS (deg/100')	VS @ 0.00° Az (feet)	Comments
8623.00	90.30	359.20	5166.34	3724.30	-20.49	0.59	3724.30	
8683.00	89.70	359.20	5166.34	3784.29	-21.33	1.00	3784.29	
8743.00	89.50	359.90	5166.75	3844.29	-21.80	1.21	3844.29	
8804.00	89.50	0.50	5167.29	3905.29	-21.59	0.98	3905.29	
8864.00	90.30	0.30	5167.39	3965.28	-21.17	1.37	3965.28	
8925.00	90.30	0.10	5167.07	4026.28	-20.95	0.33	4026.28	
8987.00	90.10	359.80	5166.86	4088.28	-21.01	0.58	4088.28	
9049.00	89.90	1.30	5166.86	4150.28	-20.41	2.44	4150.28	
9111.00	91.10	1.70	5166.31	4212.25	-18.79	2.04	4212.25	
9173.00	91.30	1.30	5165.02	4274.22	-17.17	0.72	4274.22	
9235.00	91.50	1.50	5163.50	4336.18	-15.65	0.46	4336.18	
9297.00	91.50	1.30	5161.88	4398.14	-14.14	0.32	4398.14	
9359.00	90.70	1.90	5160.69	4460.10	-12.41	1.61	4460.10	
9421.00	90.70	2.40	5159.93	4522.06	-10.08	0.81	4522.06	
9483.00	88.90	2.10	5160.15	4584.01	-7.65	2.94	4584.01	
9544.00	88.90	1.90	5161.32	4644.96	-5.52	0.33	4644.96	
9606.00	89.10	1.50	5162.40	4706.92	-3.68	0.72	4706.92	
9668.00	89.50	2.10	5163.16	4768.88	-1.73	1.16	4768.88	
9731.00	89.80	2.20	5163.54	4831.84	0.63	0.50	4831.84	
9793.00	90.30	2.60	5163.49	4893.78	3.23	1.03	4893.78	
9855.00	91.80	1.90	5162.35	4955.72	5.66	2.67	4955.72	
9917.00	91.20	1.00	5160.73	5017.68	7.23	1.74	5017.68	
9980.00	91.00	0.50	5159.52	5080.66	8.05	0.85	5080.66	
10042.00	91.10	0.50	5158.38	5142.65	8.59	0.16	5142.65	
10104.00	91.70	0.50	5156.87	5204.63	9.13	0.97	5204.63	
10166.00	91.50	358.50	5155.14	5266.60	8.59	3.24	5266.60	
10228.00	90.00	357.80	5154.33	5328.56	6.59	2.67	5328.56	
10289.00	89.70	357.70	5154.49	5389.51	4.20	0.52	5389.51	
10351.00	90.00	358.00	5154.65	5451.47	1.87	0.68	5451.47	
10413.00	89.80	358.00	5154.76	5513.43	-0.29	0.32	5513.43	

Calmena Energy Services

Company: Osage Resources
 Well: Osage No. 25-03 HC
 Location:

Date: 31-Oct-2012
 Surveys
 Page 7
 Job# : 6785

MD (feet)	Inclination (degrees)	Azimuth (degrees)	TVD RKB (feet)	N-S (feet)	E-W (feet)	DLS (deg/100')	VS @ 0.00° Az (feet)	Comments
10475.00	89.90	357.80	5154.92	5575.39	-2.56	0.36	5575.39	
10538.00	89.80	357.70	5155.08	5638.34	-5.04	0.22	5638.34	
10601.00	90.00	357.80	5155.19	5701.29	-7.51	0.35	5701.29	
10662.00	89.60	358.20	5155.41	5762.25	-9.64	0.93	5762.25	
10724.00	90.10	357.80	5155.57	5824.22	-11.80	1.03	5824.22	
10786.00	89.00	358.50	5156.06	5886.18	-13.81	2.10	5886.18	
10848.00	88.90	359.60	5157.19	5948.16	-14.83	1.78	5948.16	
10909.00	88.80	359.40	5158.42	6009.15	-15.37	0.37	6009.15	
10971.00	89.20	359.40	5159.50	6071.13	-16.01	0.65	6071.13	
11033.00	89.40	359.10	5160.26	6133.12	-16.83	0.58	6133.12	
11142.00	89.40	359.10	5161.40	6242.10	-18.54	0.00	6242.10	