



DRILL STEM TEST REPORT

Prepared For: **Hartman Oil Co.**

10500 E Berkeley Sq Pkwy
STE 100
Wichita, KS 67206

ATTN: Kitt Noah

Wilkinson #1-22

22 17s 34w Scott,KS

Start Date: 2012.11.02 @ 15:16:30

End Date: 2012.11.03 @ 00:26:15

Job Ticket #: 49764 DST #: 1

Trilobite Testing, Inc

PO Box 362 Hays, KS 67601

ph: 785-625-4778 fax: 785-625-5620

Printed: 2012.11.13 @ 15:54:42



TRILOBITE TESTING, INC.

DRILL STEM TEST REPORT

Hartman Oil Co.
 10500 E Berkeley Sq Pkw y
 STE 100
 Wichita, KS 67206
 ATTN: Kitt Noah

22 17s 34w Scott,KS
Wilkinson #1-22
 Job Ticket: 49764 **DST#: 1**
 Test Start: 2012.11.02 @ 15:16:30

GENERAL INFORMATION:

Formation: **LKC J-K**
 Deviated: No Whipstock: ft (KB)
 Time Tool Opened: 18:21:45
 Time Test Ended: 00:26:15
 Interval: **4300.00 ft (KB) To 4356.00 ft (KB) (TVD)**
 Total Depth: 4356.00 ft (KB) (TVD)
 Hole Diameter: 7.88 inches Hole Condition: Good
 Test Type: Conventional Bottom Hole (Initial)
 Tester: Bradley Walter
 Unit No: 53
 Reference Elevations: 3123.00 ft (KB)
 3113.00 ft (CF)
 KB to GR/CF: 10.00 ft

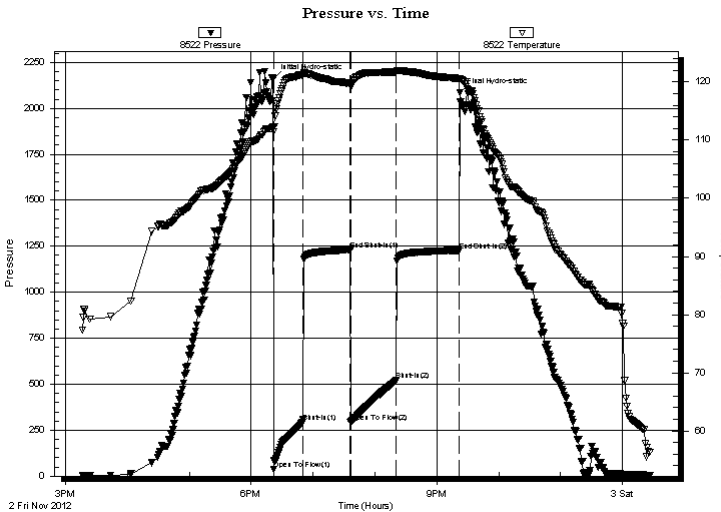
Serial #: 8522

Outside

Press @ Run Depth: 520.72 psig @ 4301.00 ft (KB) Capacity: 8000.00 psig
 Start Date: 2012.11.02 End Date: 2012.11.03 Last Calib.: 2012.11.03
 Start Time: 15:16:35 End Time: 00:26:15 Time On Btm: 2012.11.02 @ 18:21:30
 Time Off Btm: 2012.11.02 @ 21:22:30

TEST COMMENT: IF: BOB @ 8 min.
 IS: No return.
 FF: BOB @ 13 min.
 FS: No return.

PRESSURE SUMMARY



Time (Min.)	Pressure (psig)	Temp (deg F)	Annotation
0	2161.38	112.36	Initial Hydro-static
1	36.18	111.52	Open To Flow (1)
29	294.36	121.21	Shut-In(1)
75	1229.96	119.72	End Shut-In(1)
75	293.12	119.22	Open To Flow (2)
119	520.72	121.72	Shut-In(2)
180	1226.28	120.59	End Shut-In(2)
181	2085.03	120.55	Final Hydro-static

Recovery

Length (ft)	Description	Volume (bbl)
1060.00	mcw 5m 95w (oil spots)	12.05

Gas Rates

Choke (inches)	Pressure (psig)	Gas Rate (Mcf/d)



**TRILOBITE
TESTING, INC.**

DRILL STEM TEST REPORT

Hartman Oil Co.

22 17s 34w Scott, KS

10500 E Berkeley Sq Pkw y
STE 100
Wichita, KS 67206
ATTN: Kitt Noah

Wilkinson #1-22

Job Ticket: 49764

DST#: 1

Test Start: 2012.11.02 @ 15:16:30

GENERAL INFORMATION:

Formation: **LKC J-K**

Deviated: No Whipstock: ft (KB)

Time Tool Opened: 18:21:45

Time Test Ended: 00:26:15

Test Type: Conventional Bottom Hole (Initial)

Tester: Bradley Walter

Unit No: 53

Interval: 4300.00 ft (KB) To 4356.00 ft (KB) (TVD)

Reference Elevations: 3123.00 ft (KB)

Total Depth: 4356.00 ft (KB) (TVD)

3113.00 ft (CF)

Hole Diameter: 7.88 inches Hole Condition: Good

KB to GR/CF: 10.00 ft

Serial #: 8677

Inside

Press @ Run Depth: psig @ 4301.00 ft (KB)

Capacity: 8000.00 psig

Start Date: 2012.11.02

End Date:

2012.11.03

Last Calib.:

2012.11.03

Start Time: 15:17:05

End Time:

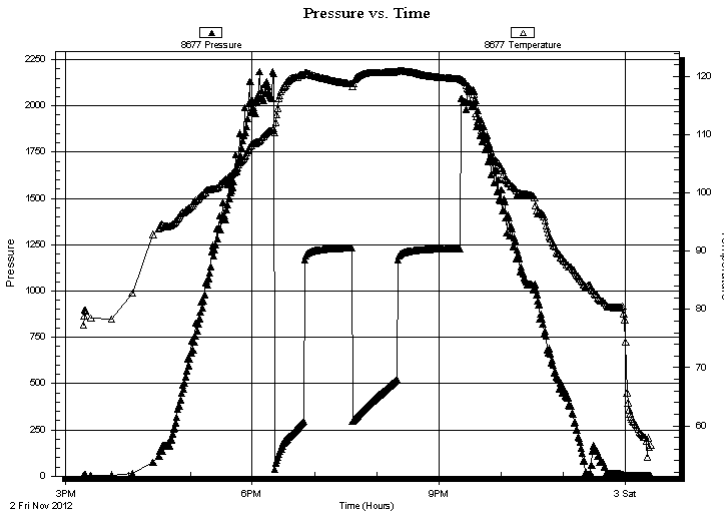
00:25:15

Time On Btm:

Time Off Btm:

TEST COMMENT: IF: BOB @ 8 min.
IS: No return.
FF: BOB @ 13 min.
FS: No return.

PRESSURE SUMMARY



Time (Min.)	Pressure (psig)	Temp (deg F)	Annotation

Recovery

Length (ft)	Description	Volume (bbl)
1060.00	mcw 5m 95w (oil spots)	12.05

Gas Rates

	Choke (inches)	Pressure (psig)	Gas Rate (Mcf/d)



**TRILOBITE
TESTING, INC.**

DRILL STEM TEST REPORT

TOOL DIAGRAM

Hartman Oil Co.

22 17s 34w Scott,KS

10500 E Berkeley Sq Pkwy
STE 100
Wichita, KS 67206
ATTN: Kitt Noah

Wilkinson #1-22

Job Ticket: 49764

DST#: 1

Test Start: 2012.11.02 @ 15:16:30

Tool Information

Drill Pipe:	Length: 3988.00 ft	Diameter: 3.80 inches	Volume: 55.94 bbl	Tool Weight: 2000.00 lb
Heavy Wt. Pipe:	Length: 0.00 ft	Diameter: 0.00 inches	Volume: 0.00 bbl	Weight set on Packer: 25000.00 lb
Drill Collar:	Length: 310.00 ft	Diameter: 2.25 inches	Volume: 1.52 bbl	Weight to Pull Loose: 75000.00 lb
		Total Volume: 57.46 bbl		Tool Chased 0.00 ft
Drill Pipe Above KB:	20.00 ft			String Weight: Initial 62000.00 lb
Depth to Top Packer:	4300.00 ft			Final 65000.00 lb
Depth to Bottom Packer:	ft			
Interval between Packers:	56.00 ft			
Tool Length:	78.00 ft			
Number of Packers:	2	Diameter: 6.75 inches		

Tool Comments:

Tool Description

Tool Description	Length (ft)	Serial No.	Position	Depth (ft)	Accum. Lengths
Change Over Sub	1.00			4279.00	
Shut In Tool	5.00			4284.00	
Hydraulic tool	5.00			4289.00	
Safety Joint	2.00			4291.00	
Packer	5.00			4296.00	22.00 Bottom Of Top Packer
Packer	4.00			4300.00	
Stubb	1.00			4301.00	
Recorder	0.00	8677	Inside	4301.00	
Recorder	0.00	8522	Outside	4301.00	
Perforations	19.00			4320.00	
Change Over Sub	1.00			4321.00	
Drill Pipe	31.00			4352.00	
Change Over Sub	1.00			4353.00	
Bullnose	3.00			4356.00	56.00 Bottom Packers & Anchor

Total Tool Length: 78.00



**TRILOBITE
TESTING, INC.**

DRILL STEM TEST REPORT

FLUID SUMMARY

Hartman Oil Co.

22 17s 34w Scott, KS

10500 E Berkeley Sq Pkwy
STE 100
Wichita, KS 67206
ATTN: Kitt Noah

Wilkinson #1-22

Job Ticket: 49764

DST#: 1

Test Start: 2012.11.02 @ 15:16:30

Mud and Cushion Information

Mud Type: Gel Chem

Cushion Type:

Oil API:

0 deg API

Mud Weight: 9.00 lb/gal

Cushion Length:

ft

Water Salinity:

54000 ppm

Viscosity: 54.00 sec/qt

Cushion Volume:

bbbl

Water Loss: 7.98 in³

Gas Cushion Type:

Resistivity: ohm.m

Gas Cushion Pressure:

psig

Salinity: 6000.00 ppm

Filter Cake: 1.00 inches

Recovery Information

Recovery Table

Length ft	Description	Volume bbl
1060.00	mcw 5m 95w (oil spots)	12.045

Total Length: 1060.00 ft Total Volume: 12.045 bbl

Num Fluid Samples: 0

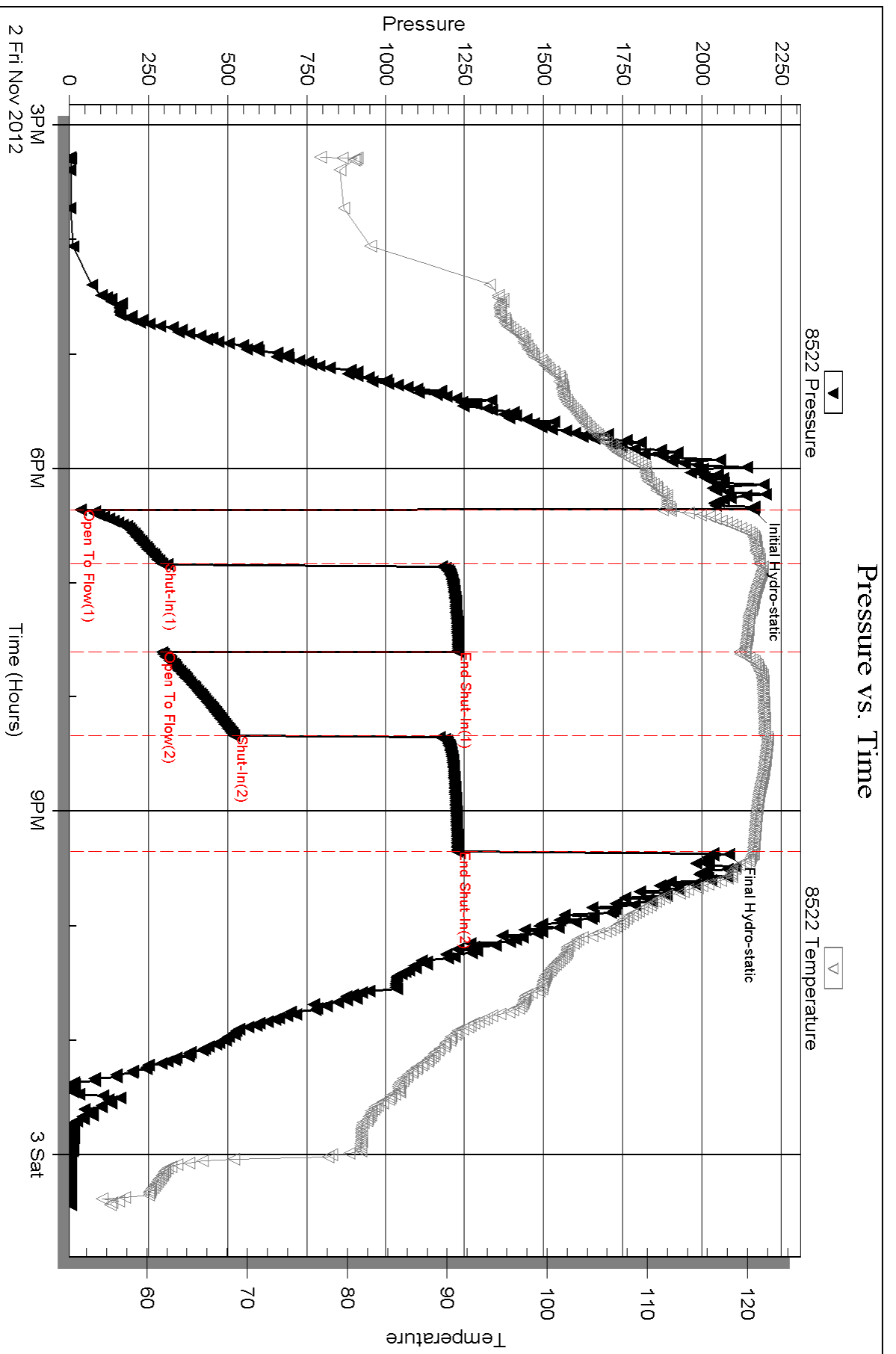
Num Gas Bombs: 0

Serial #:

Laboratory Name:

Laboratory Location:

Recovery Comments: rw is .250 @ 40F = 54,000ppm



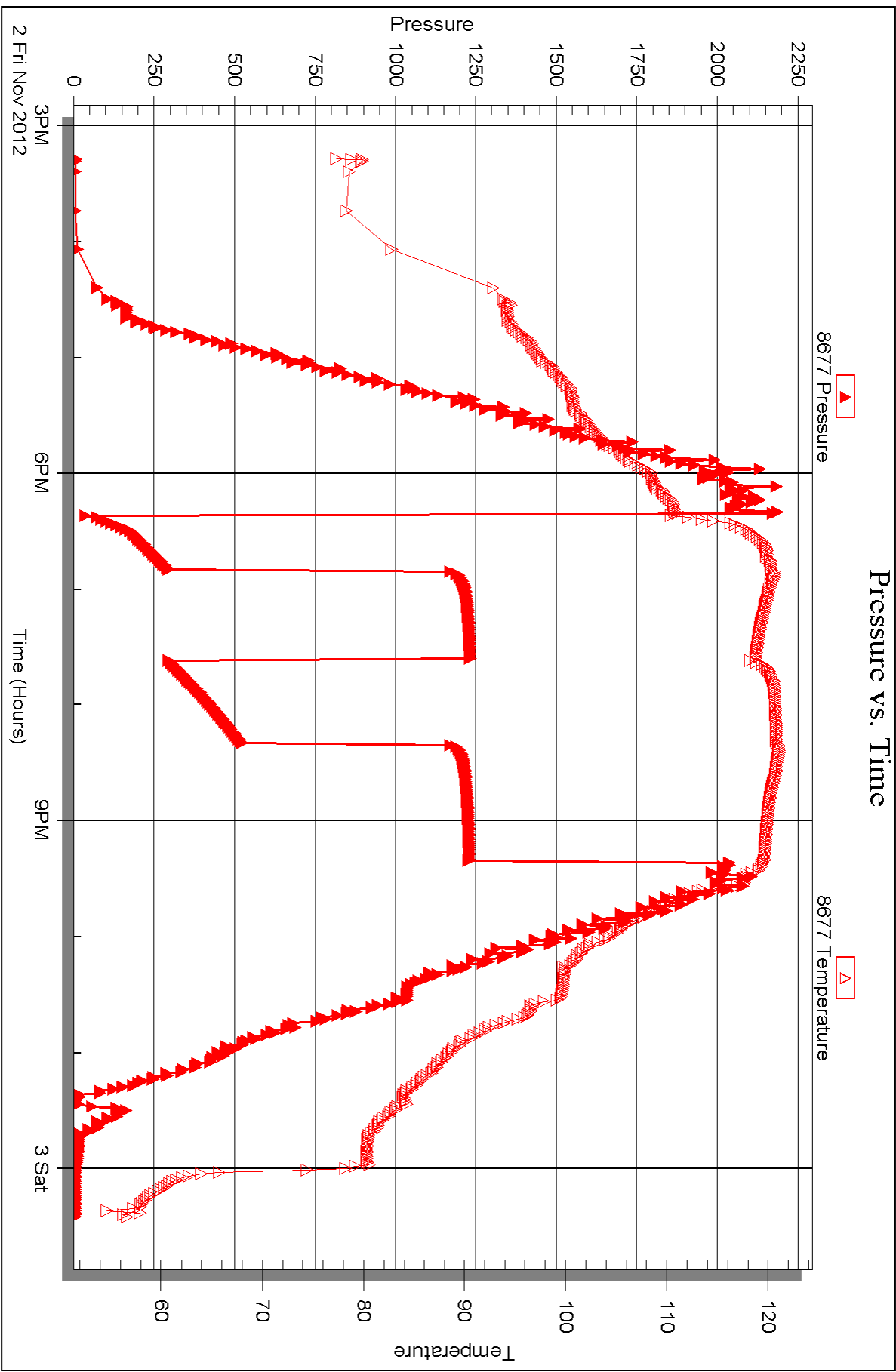
Serial #: 8677

Inside

Hartman Oil Co.

Wilkinson #1-22

DST Test Number: 1





DRILL STEM TEST REPORT

Prepared For: **Hartman Oil Co.**

10500 E Berkeley Sq Pkwy
STE 100
Wichita, KS 67206

ATTN: Kitt Noah

Wilkinson #1-22

22 17s 34w Scott,KS

Start Date: 2012.11.03 @ 19:26:00

End Date: 2012.11.04 @ 08:18:30

Job Ticket #: 49765 DST #: 2

Trilobite Testing, Inc
PO Box 362 Hays, KS 67601
ph: 785-625-4778 fax: 785-625-5620

Printed: 2012.11.13 @ 15:54:00



TRILOBITE TESTING, INC.

DRILL STEM TEST REPORT

Hartman Oil Co.
 10500 E Berkeley Sq Pkw y
 STE 100
 Wichita, KS 67206
 ATTN: Kitt Noah

22 17s 34w Scott,KS
Wilkinson #1-22
 Job Ticket: 49765 **DST#: 2**
 Test Start: 2012.11.03 @ 19:26:00

GENERAL INFORMATION:

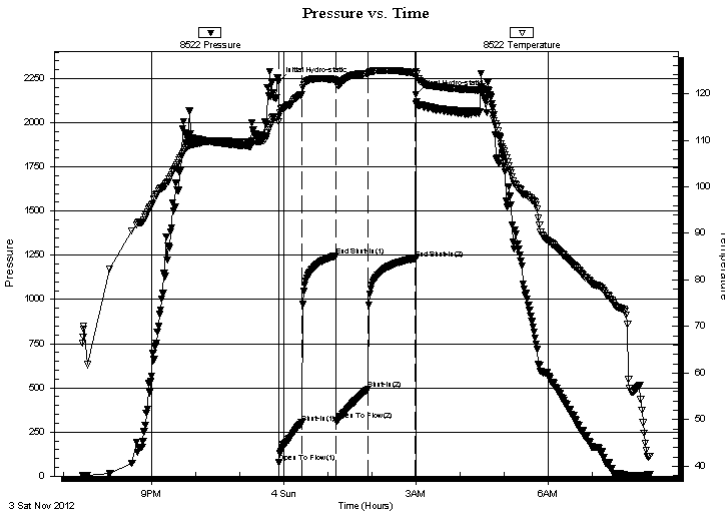
Formation: **Altamont A-B**
 Deviated: No Whipstock: ft (KB)
 Time Tool Opened: 23:53:00
 Time Test Ended: 08:18:30
 Interval: **4477.00 ft (KB) To 4526.00 ft (KB) (TVD)**
 Total Depth: 4526.00 ft (KB) (TVD)
 Hole Diameter: 7.88 inches Hole Condition: Good
 Test Type: Conventional Bottom Hole (Reset)
 Tester: Bradley Walter
 Unit No: 53
 Reference Elevations: 3123.00 ft (KB)
 3113.00 ft (CF)
 KB to GR/CF: 10.00 ft

Serial #: 8522 Outside

Press @ Run Depth: 492.06 psig @ 4478.00 ft (KB) Capacity: 8000.00 psig
 Start Date: 2012.11.03 End Date: 2012.11.04 Last Calib.: 2012.11.04
 Start Time: 19:26:05 End Time: 08:18:30 Time On Btm: 2012.11.03 @ 23:52:45
 Time Off Btm: 2012.11.04 @ 02:59:45

TEST COMMENT: IF: BOB @ 4 min.
 IS: BOB return @ 35 min.
 FF: BOB @ 6 min.
 FS: 6" return.

PRESSURE SUMMARY



Time (Min.)	Pressure (psig)	Temp (deg F)	Annotation
0	2232.36	115.10	Initial Hydro-static
1	76.24	114.02	Open To Flow (1)
32	302.27	119.79	Shut-In(1)
78	1246.37	122.88	End Shut-In(1)
79	315.47	122.40	Open To Flow (2)
122	492.06	124.33	Shut-In(2)
187	1227.95	124.34	End Shut-In(2)
187	2161.40	124.67	Final Hydro-static

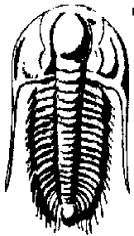
Recovery

Length (ft)	Description	Volume (bbl)
60.00	gmco 10g 30m 60o	0.30
1170.00	gsmco 30g 3m 67o	14.13
0.00	GIP 220'	0.00

* Recovery from multiple tests

Gas Rates

Choke (inches)	Pressure (psig)	Gas Rate (Mcf/d)



TRILOBITE TESTING, INC.

DRILL STEM TEST REPORT

Hartman Oil Co.
10500 E Berkeley Sq Pkw y
STE 100
Wichita, KS 67206
ATTN: Kitt Noah

22 17s 34w Scott,KS
Wilkinson #1-22
Job Ticket: 49765 **DST#: 2**
Test Start: 2012.11.03 @ 19:26:00

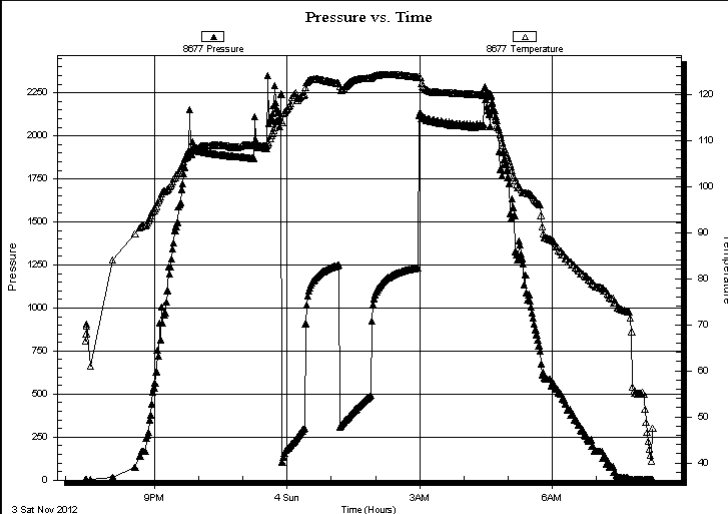
GENERAL INFORMATION:

Formation:	Altamont A-B		
Deviated:	No Whipstock:	ft (KB)	Test Type: Conventional Bottom Hole (Reset)
Time Tool Opened:	23:53:00		Tester: Bradley Walter
Time Test Ended:	08:18:30		Unit No: 53
Interval:	4477.00 ft (KB) To 4526.00 ft (KB) (TVD)		Reference Elevations: 3123.00 ft (KB)
Total Depth:	4526.00 ft (KB) (TVD)		3113.00 ft (CF)
Hole Diameter:	7.88 inches	Hole Condition: Good	KB to GR/CF: 10.00 ft

Serial #: 8677 Inside

Press @ RunDepth:	psig @ 4478.00 ft (KB)	Capacity:	8000.00 psig
Start Date:	2012.11.03	End Date:	2012.11.04
Start Time:	19:26:50	End Time:	08:17:15
		Time On Btm:	
		Time Off Btm:	

TEST COMMENT: IF: BOB @ 4 min.
IS: BOB return @ 35 min.
FF: BOB @ 6 min.
FS: 6" return.



PRESSURE SUMMARY

Time (Min.)	Pressure (psig)	Temp (deg F)	Annotation

Recovery

Length (ft)	Description	Volume (bbl)
60.00	gmco 10g 30m 60o	0.30
1170.00	gsmco 30g 3m 67o	14.13
0.00	GIP 220'	0.00

* Recovery from multiple tests

Gas Rates

	Choke (inches)	Pressure (psig)	Gas Rate (Mcf/d)



**TRILOBITE
TESTING, INC.**

DRILL STEM TEST REPORT

TOOL DIAGRAM

Hartman Oil Co.

22 17s 34w Scott,KS

10500 E Berkeley Sq Pkwy
STE 100
Wichita, KS 67206
ATTN: Kitt Noah

Wilkinson #1-22

Job Ticket: 49765

DST#: 2

Test Start: 2012.11.03 @ 19:26:00

Tool Information

Drill Pipe:	Length: 4175.00 ft	Diameter: 3.80 inches	Volume: 58.56 bbl	Tool Weight: 2000.00 lb
Heavy Wt. Pipe:	Length: 0.00 ft	Diameter: 0.00 inches	Volume: 0.00 bbl	Weight set on Packer: 25000.00 lb
Drill Collar:	Length: 310.00 ft	Diameter: 2.25 inches	Volume: 1.52 bbl	Weight to Pull Loose: 85000.00 lb
			<u>Total Volume: 60.08 bbl</u>	Tool Chased 0.00 ft
Drill Pipe Above KB:	30.00 ft			String Weight: Initial 65000.00 lb
Depth to Top Packer:	4477.00 ft			Final 68000.00 lb
Depth to Bottom Packer:	ft			
Interval between Packers:	49.00 ft			
Tool Length:	71.00 ft			
Number of Packers:	2	Diameter: 6.75 inches		

Tool Comments:

Tool Description

Tool Description	Length (ft)	Serial No.	Position	Depth (ft)	Accum. Lengths
Change Over Sub	1.00			4456.00	
Shut In Tool	5.00			4461.00	
Hydraulic tool	5.00			4466.00	
Safety Joint	2.00			4468.00	
Packer	5.00			4473.00	22.00 Bottom Of Top Packer
Packer	4.00			4477.00	
Stubb	1.00			4478.00	
Recorder	0.00	8677	Inside	4478.00	
Recorder	0.00	8522	Outside	4478.00	
Perforations	12.00			4490.00	
Change Over Sub	1.00			4491.00	
Drill Pipe	31.00			4522.00	
Change Over Sub	1.00			4523.00	
Bullnose	3.00			4526.00	49.00 Bottom Packers & Anchor

Total Tool Length: 71.00



**TRILOBITE
TESTING, INC.**

DRILL STEM TEST REPORT

FLUID SUMMARY

Hartman Oil Co.

22 17s 34w Scott, KS

10500 E Berkeley Sq Pkw y
STE 100
Wichita, KS 67206
ATTN: Kitt Noah

Wilkinson #1-22

Job Ticket: 49765

DST#: 2

Test Start: 2012.11.03 @ 19:26:00

Mud and Cushion Information

Mud Type: Gel Chem

Cushion Type:

Oil API:

27 deg API

Mud Weight: 9.00 lb/gal

Cushion Length:

ft

Water Salinity:

0 ppm

Viscosity: 53.00 sec/qt

Cushion Volume:

bbbl

Water Loss: 6.39 in³

Gas Cushion Type:

Resistivity: ohm.m

Gas Cushion Pressure:

psig

Salinity: 7000.00 ppm

Filter Cake: 1.00 inches

Recovery Information

Recovery Table

Length ft	Description	Volume bbl
60.00	gmco 10g 30m 60o	0.295
1170.00	gsmco 30g 3m 67o	14.135
0.00	GIP 220'	0.000

Total Length: 1230.00 ft Total Volume: 14.430 bbl

Num Fluid Samples: 0

Num Gas Bombs: 0

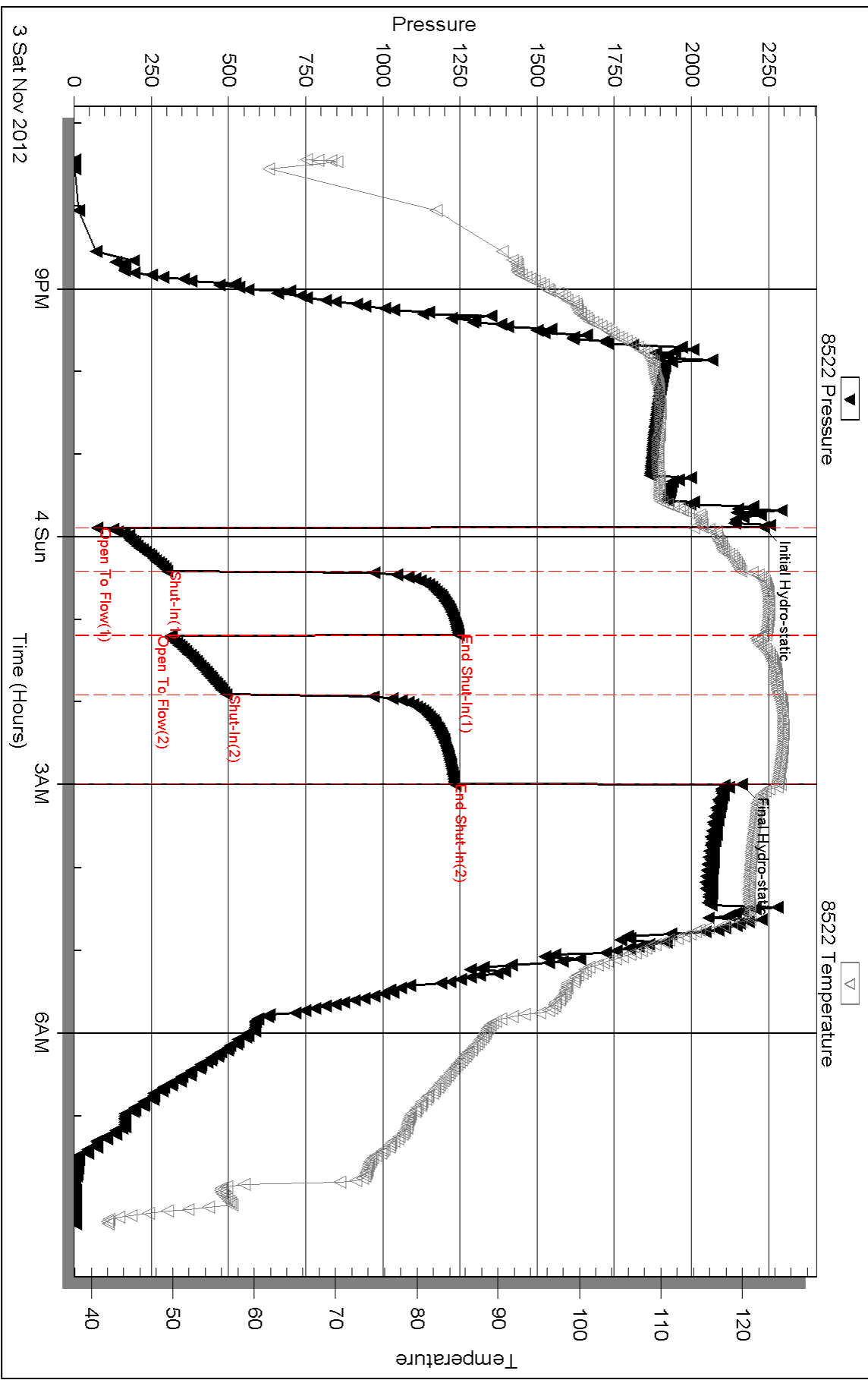
Serial #:

Laboratory Name:

Laboratory Location:

Recovery Comments:

Pressure vs. Time



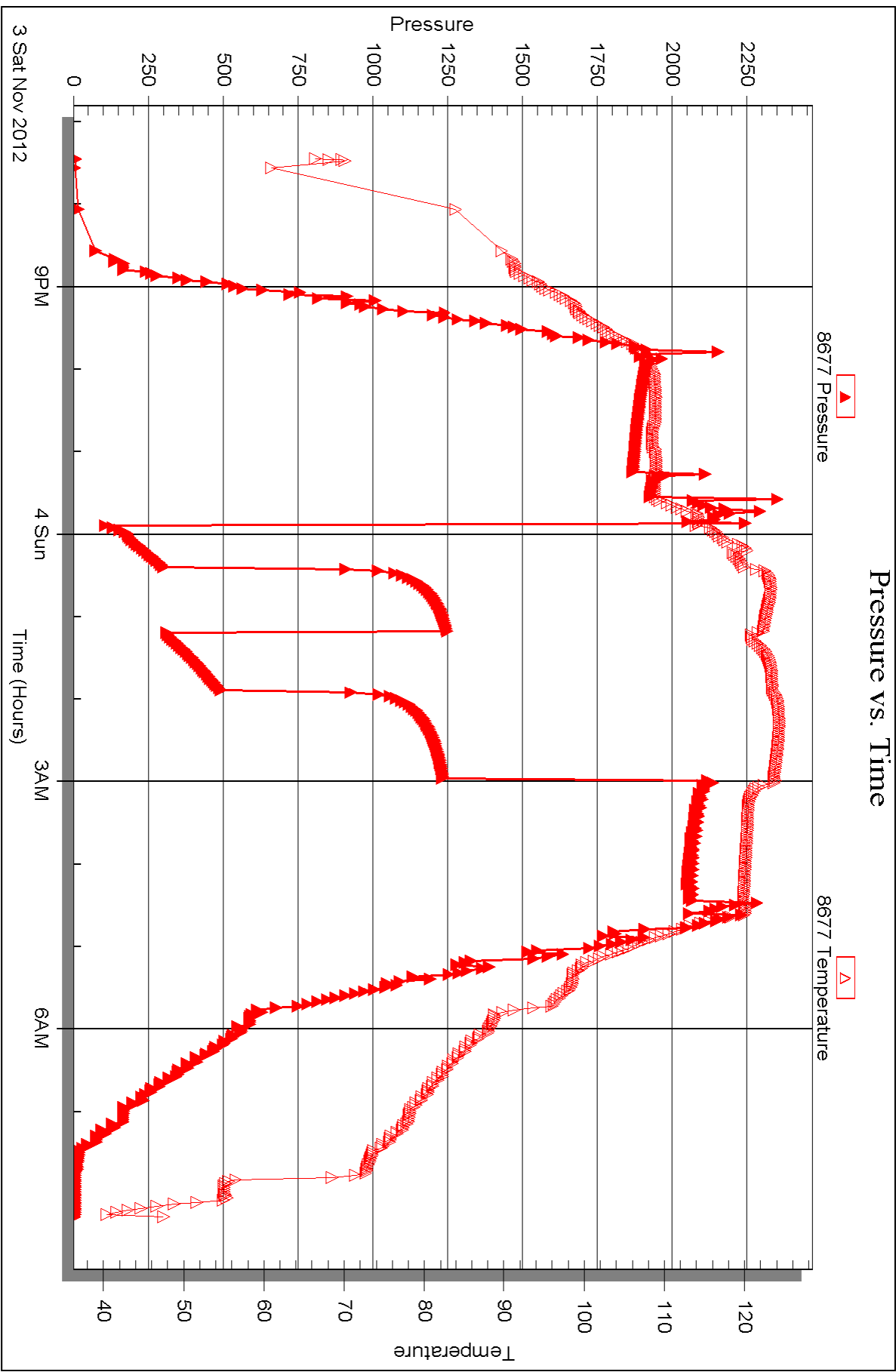
Serial #: 8677

Inside

Hartman Oil Co.

Wilkinson #1-22

DST Test Number: 2





DRILL STEM TEST REPORT

Prepared For: **Hartman Oil Co.**

10500 E Berkeley Sq Pkwy
STE 100
Wichita, KS 67206

ATTN: Kitt Noah

Wilkinson #1-22

22 17s 34w Scott,KS

Start Date: 2012.11.05 @ 18:48:00

End Date: 2012.11.06 @ 01:20:15

Job Ticket #: 49766 DST #: 3

Trilobite Testing, Inc
PO Box 362 Hays, KS 67601
ph: 785-625-4778 fax: 785-625-5620

Printed: 2012.11.13 @ 15:52:45



TRILOBITE TESTING, INC.

DRILL STEM TEST REPORT

Hartman Oil Co.
 10500 E Berkeley Sq Pkw y
 STE 100
 Wichita, KS 67206
 ATTN: Kitt Noah

22 17s 34w Scott, KS
Wilkinson #1-22
 Job Ticket: 49766 **DST#: 3**
 Test Start: 2012.11.05 @ 18:48:00

GENERAL INFORMATION:

Formation: **Mississippian**
 Deviated: No Whipstock: ft (KB)
 Time Tool Opened: 20:35:30
 Time Test Ended: 01:20:15
 Interval: **4843.00 ft (KB) To 4854.00 ft (KB) (TVD)**
 Total Depth: 4854.00 ft (KB) (TVD)
 Hole Diameter: 7.88 inches Hole Condition: Good
 Test Type: Conventional Bottom Hole (Reset)
 Tester: Bradley Walter
 Unit No: 53
 Reference Elevations: 3123.00 ft (KB)
 3113.00 ft (CF)
 KB to GR/CF: 10.00 ft

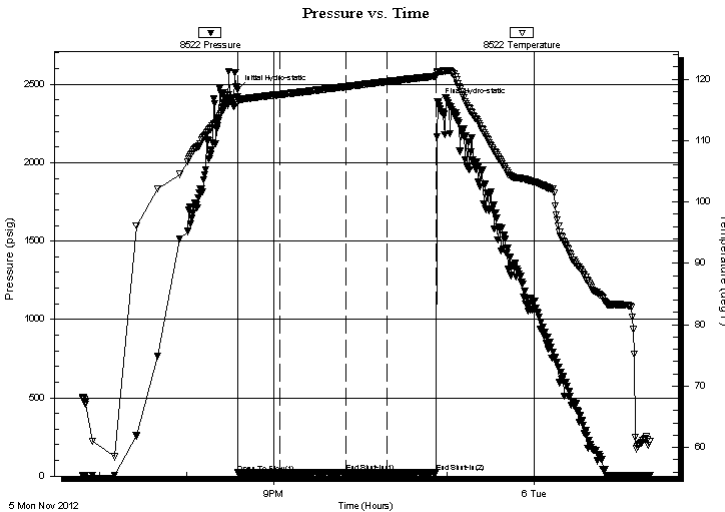
Serial #: 8522

Outside

Press @ Run Depth: 21.43 psig @ 4844.00 ft (KB) Capacity: 8000.00 psig
 Start Date: 2012.11.05 End Date: 2012.11.06 Last Calib.: 2012.11.06
 Start Time: 18:48:05 End Time: 01:20:14 Time On Btm: 2012.11.05 @ 20:35:15
 Time Off Btm: 2012.11.05 @ 22:53:30

TEST COMMENT: IF: Surface blow , died @ 18 min.
 IS: No return.
 FF: No blow .
 FS: No return.

PRESSURE SUMMARY



Time (Min.)	Pressure (psig)	Temp (deg F)	Annotation
0	2467.80	117.25	Initial Hydro-static
1	20.75	116.22	Open To Flow (1)
29	21.62	117.49	Shut-In(1)
75	25.83	118.77	End Shut-In(1)
75	21.07	118.77	Open To Flow (2)
103	21.43	119.59	Shut-In(2)
137	22.54	120.49	End Shut-In(2)
139	2386.02	121.17	Final Hydro-static

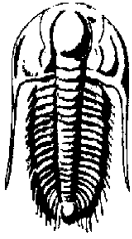
Recovery

Length (ft)	Description	Volume (bbl)
2.00	mud 100m (oil spots)	0.01

* Recovery from multiple tests

Gas Rates

Choke (inches)	Pressure (psig)	Gas Rate (Mcf/d)



**TRILOBITE
TESTING, INC.**

DRILL STEM TEST REPORT

Hartman Oil Co.
10500 E Berkeley Sq Pkw y
STE 100
Wichita, KS 67206
ATTN: Kitt Noah

22 17s 34w Scott, KS

Wilkinson #1-22

Job Ticket: 49766

DST#: 3

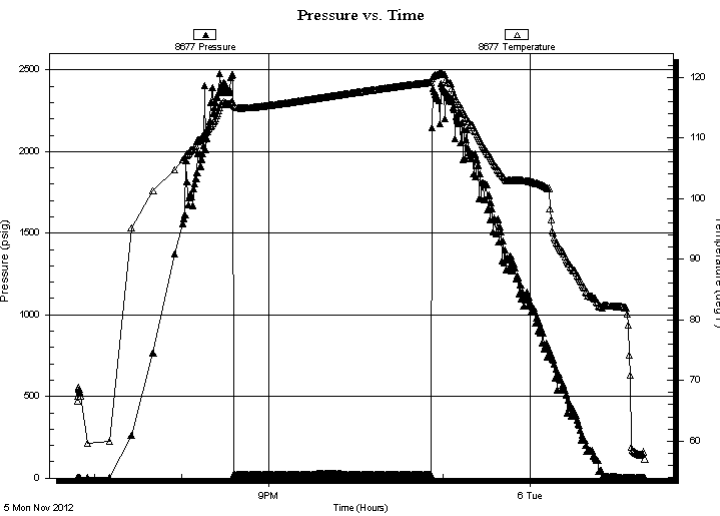
Test Start: 2012.11.05 @ 18:48:00

GENERAL INFORMATION:

Formation: **Mississippian**
 Deviated: No Whipstock: ft (KB)
 Time Tool Opened: 20:35:30
 Time Test Ended: 01:20:15
 Interval: **4843.00 ft (KB) To 4854.00 ft (KB) (TVD)**
 Total Depth: 4854.00 ft (KB) (TVD)
 Hole Diameter: 7.88 inches Hole Condition: Good
 Test Type: Conventional Bottom Hole (Reset)
 Tester: Bradley Walter
 Unit No: 53
 Reference Elevations: 3123.00 ft (KB)
 3113.00 ft (CF)
 KB to GR/CF: 10.00 ft

Serial #: 8677 Inside
 Press @ Run Depth: psig @ 4844.00 ft (KB) Capacity: 8000.00 psig
 Start Date: 2012.11.05 End Date: 2012.11.06 Last Calib.: 2012.11.06
 Start Time: 18:48:05 End Time: 01:18:59 Time On Btm:
 Time Off Btm:

TEST COMMENT: IF: Surface blow , died @ 18 min.
 IS: No return.
 FF: No blow .
 FS: No return.



PRESSURE SUMMARY

Time (Min.)	Pressure (psig)	Temp (deg F)	Annotation

Recovery

Length (ft)	Description	Volume (bbl)
2.00	mud 100m (oil spots)	0.01

* Recovery from multiple tests

Gas Rates

Choke (inches)	Pressure (psig)	Gas Rate (Mcf/d)



**TRILOBITE
TESTING, INC.**

DRILL STEM TEST REPORT

TOOL DIAGRAM

Hartman Oil Co.

22 17s 34w Scott,KS

10500 E Berkeley Sq Pkwy
STE 100
Wichita, KS 67206
ATTN: Kitt Noah

Wilkinson #1-22

Job Ticket: 49766

DST#: 3

Test Start: 2012.11.05 @ 18:48:00

Tool Information

Drill Pipe:	Length: 4521.00 ft	Diameter: 3.80 inches	Volume: 63.42 bbl	Tool Weight: 2000.00 lb
Heavy Wt. Pipe:	Length: 0.00 ft	Diameter: 0.00 inches	Volume: 0.00 bbl	Weight set on Packer: 25000.00 lb
Drill Collar:	Length: 310.00 ft	Diameter: 2.25 inches	Volume: 1.52 bbl	Weight to Pull Loose: 83000.00 lb
			<u>Total Volume: 64.94 bbl</u>	Tool Chased 0.00 ft
Drill Pipe Above KB:	10.00 ft			String Weight: Initial 68000.00 lb
Depth to Top Packer:	4843.00 ft			Final 68000.00 lb
Depth to Bottom Packer:	ft			
Interval between Packers:	11.00 ft			
Tool Length:	33.00 ft			
Number of Packers:	2	Diameter: 6.75 inches		

Tool Comments:

Tool Description	Length (ft)	Serial No.	Position	Depth (ft)	Accum. Lengths
------------------	-------------	------------	----------	------------	----------------

Change Over Sub	1.00			4822.00	
Shut In Tool	5.00			4827.00	
Hydraulic tool	5.00			4832.00	
Safety Joint	2.00			4834.00	
Packer	5.00			4839.00	22.00 Bottom Of Top Packer
Packer	4.00			4843.00	
Stubb	1.00			4844.00	
Recorder	0.00	8677	Inside	4844.00	
Recorder	0.00	8522	Outside	4844.00	
Perforations	7.00			4851.00	
Bullnose	3.00			4854.00	11.00 Bottom Packers & Anchor

Total Tool Length: 33.00



**TRILOBITE
TESTING, INC.**

DRILL STEM TEST REPORT

FLUID SUMMARY

Hartman Oil Co.

22 17s 34w Scott, KS

10500 E Berkeley Sq Pkwy
STE 100
Wichita, KS 67206
ATTN: Kitt Noah

Wilkinson #1-22

Job Ticket: 49766

DST#: 3

Test Start: 2012.11.05 @ 18:48:00

Mud and Cushion Information

Mud Type: Gel Chem

Cushion Type:

Oil API:

0 deg API

Mud Weight: 9.00 lb/gal

Cushion Length:

ft

Water Salinity:

0 ppm

Viscosity: 59.00 sec/qt

Cushion Volume:

bbbl

Water Loss: 11.19 in³

Gas Cushion Type:

Resistivity: ohm.m

Gas Cushion Pressure:

psig

Salinity: 9000.00 ppm

Filter Cake: 2.00 inches

Recovery Information

Recovery Table

Length ft	Description	Volume bbl
2.00	mud 100m (oil spots)	0.010

Total Length: 2.00 ft Total Volume: 0.010 bbl

Num Fluid Samples: 0

Num Gas Bombs: 0

Serial #:

Laboratory Name:

Laboratory Location:

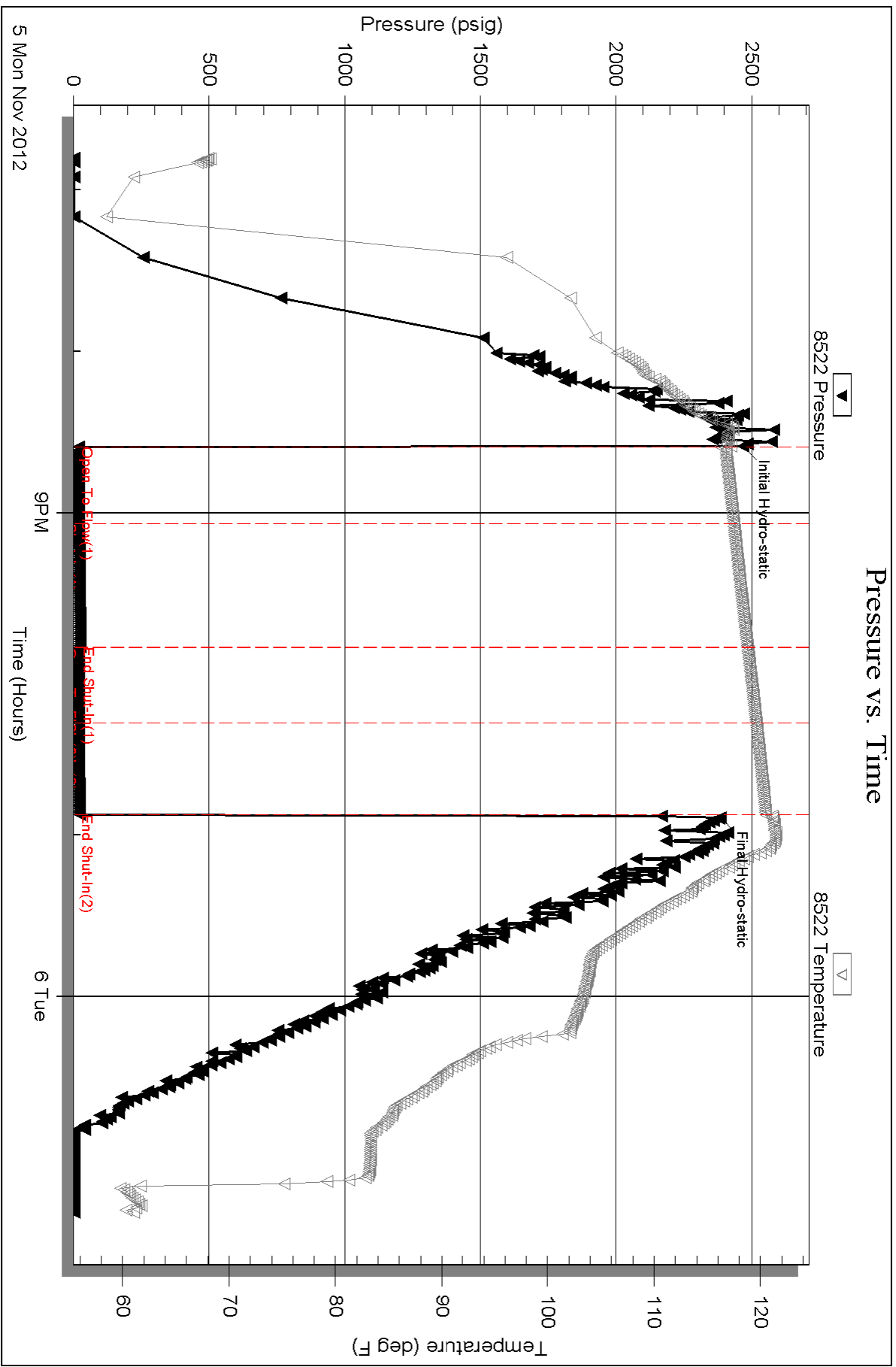
Recovery Comments:

Serial #: 8522

Outside Hartman Oil Co.

Wilkinson #1-22

DST Test Number: 3



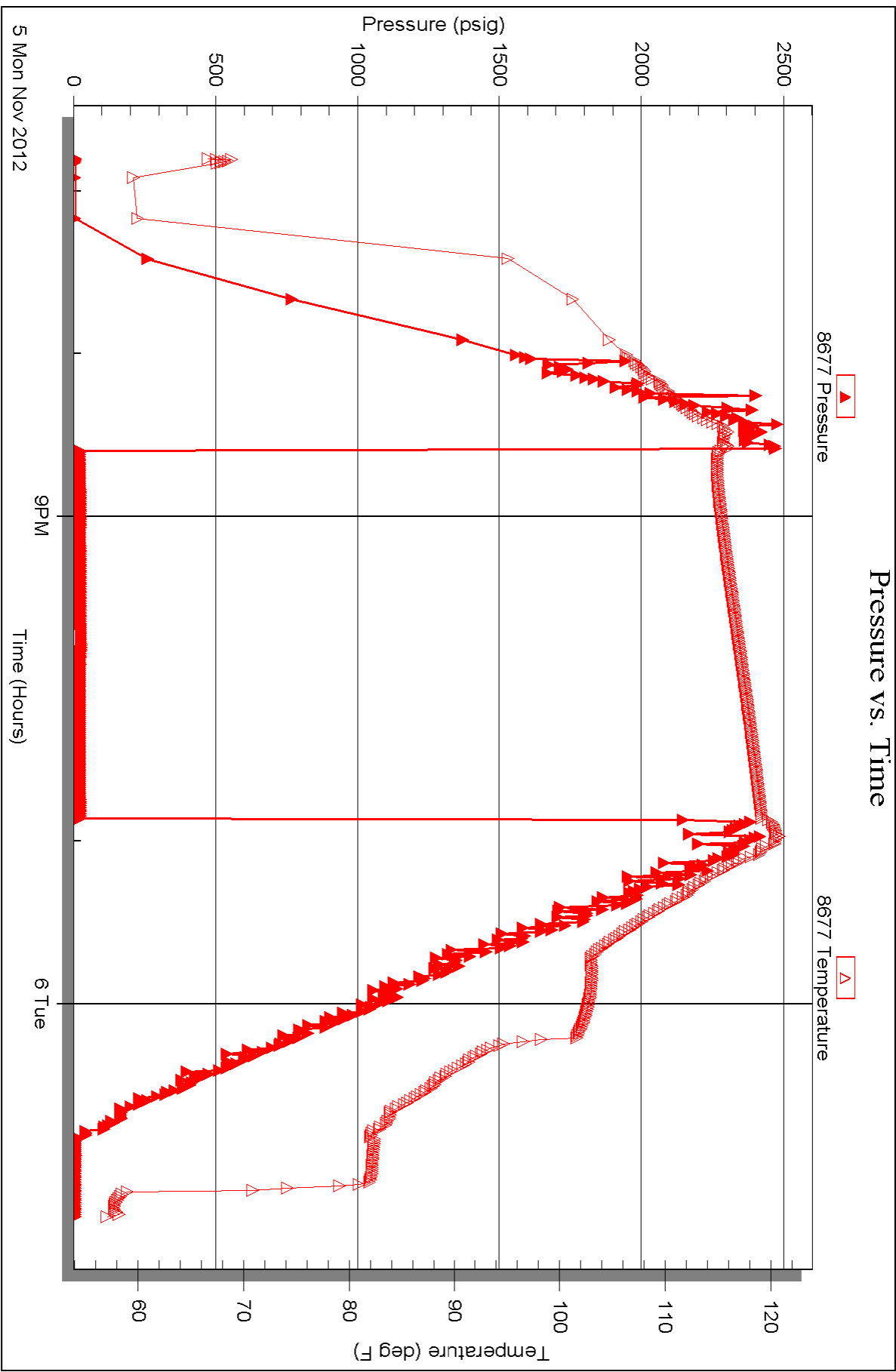
Serial #: 8677

Inside

Hartman Oil Co.

Wilkinson #1-22

DST Test Number: 3





TRILOBITE TESTING INC.

1515 Commerce Parkway • Hays, Kansas 67601

Test Ticket

NO. 49764

Well Name & No. Ha Wilkinson #1-22 Test No. 1 Date 11/02/12
 Company Hartman Oil Co. Elevation 3123 KB 3113 GL
 Address 10500 E Berkeley Sq Pkwy STE #100 Wichita, Ks 67206
 Co. Rep / Geo. Kitt Noah Rig H2 #3
 Location: Sec. 22 Twp. 17s Rge. 34w Co. Scott State Ks

Interval Tested 4300-4356 Zone Tested LKC J-K
 Anchor Length 56 Drill Pipe Run 3988 Mud Wt. 9.3
 Top Packer Depth 4295 Drill Collars Run 310 Vis 54
 Bottom Packer Depth 4300 Wt. Pipe Run 0 WL 8.0
 Total Depth 4356 Chlorides 6,000 ppm System LCM 3#
 Blow Description IF: BOB @ 8 min
ISI: No return.
FF: BOB @ 13 min.
FST: No return.

Rec	Feet of	%gas	%oil	%water	%mud
<u>1060</u>	<u>ncw (OIL SPOTS)</u>		<u>95</u>	<u>5</u>	
Rec	Feet of	%gas	%oil	%water	%mud
Rec	Feet of	%gas	%oil	%water	%mud
Rec	Feet of	%gas	%oil	%water	%mud
Rec	Feet of	%gas	%oil	%water	%mud

Rec Total 1060 BHT 121 Gravity — API RW .250 @ 40 ° F Chlorides 54,000 ppm

(A) Initial Hydrostatic <u>2161</u>	<input checked="" type="checkbox"/> Test <u>1250</u>	T-On Location <u>1500</u>
(B) First Initial Flow <u>36</u>	<input type="checkbox"/> Jars	T-Started <u>1516</u>
(C) First Final Flow <u>294</u>	<input checked="" type="checkbox"/> Safety Joint <u>75</u>	T-Open <u>1820</u>
(D) Initial Shut-In <u>1230</u>	<input checked="" type="checkbox"/> Circ Sub <u>1/2</u>	T-Pulled <u>2120</u>
(E) Second Initial Flow <u>293</u>	<input type="checkbox"/> Hourly Standby	T-Out <u>0026 / 11/3</u>
(F) Second Final Flow <u>521</u>	<input checked="" type="checkbox"/> Mileage <u>32 Rt</u> 49.60	Comments
(G) Final Shut-In <u>1226</u>	<input type="checkbox"/> Sampler	
(H) Final Hydrostatic <u>2085</u>	<input type="checkbox"/> Straddle	<input type="checkbox"/> Ruined Shale Packer
	<input type="checkbox"/> Shale Packer	<input type="checkbox"/> Ruined Packer
Initial Open <u>30</u>	<input type="checkbox"/> Extra Packer	<input type="checkbox"/> Extra Copies
Initial Shut-In <u>45</u>	<input type="checkbox"/> Extra Recorder	Sub Total <u>0</u>
Final Flow <u>45</u>	<input type="checkbox"/> Day Standby	Total <u>1374.60</u>
Final Shut-In <u>60</u>	<input type="checkbox"/> Accessibility	MP/DST Disc't
	Sub Total <u>1374.60</u>	

Approved By _____ Our Representative [Signature]

TriLOBITE TESTING INC. shall not be liable for damaged of any kind of the property or personnel of the one for whom a test is made, or for any loss suffered or sustained, directly or indirectly, through the use of its equipment, or its statements or opinion concerning the results of any test, tools lost or damaged in the hole shall be paid for at cost by the party for whom the test is made.



TRILOBITE TESTING INC.

1515 Commerce Parkway • Hays, Kansas 67601

Test Ticket

NO. 49765

Well Name & No. Wilkinson #1-22 Test No. 2 Date 11/04/12
 Company Hartman Oil Co. Elevation 3123 KB 3113 GL
 Address 10500 E. Berkeley Sq Pkwy STE 100 Wichita, KS 67206
 Co. Rep / Geo. Kitt Noah Rig H2 #3
 Location: Sec. 22 Twp. 17s Rge. 34w Co. Scott State Ks

Interval Tested 4477 - 4526 Zone Tested Altament "A-B"
 Anchor Length 49' Drill Pipe Run 4175 Mud Wt. 9.3
 Top Packer Depth 4472 Drill Collars Run 310 Vis 53
 Bottom Packer Depth 4526 4477 Wt. Pipe Run Ø WL 6.4
 Total Depth 4526 Chlorides 7,000 ppm System LCM 2#
 Blow Description IF: BOB @ 4 min.
ISI: BOB @ 30 min.
FF: BOB @ 6 min.
FSI: 6" return.

Rec	Feet of	%gas	%oil	%water	%mud
<u>1170</u>	<u>GSMCO</u>	<u>30</u>	<u>67</u>	<u>3</u>	
<u>60</u>	<u>GMC0</u>	<u>10</u>	<u>60</u>	<u>30</u>	
	<u>220' GIP</u>				

Rec Total 1230 BHT 125 Gravity 27 API RW — @ —° F Chlorides — ppm

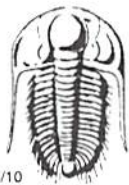
(A) Initial Hydrostatic 2232 Test 1250 T-On Location 1780 11/03
 (B) First Initial Flow 76 Jars _____ T-Started 1926
 (C) First Final Flow 302 Safety Joint 75 T-Open 2353
 (D) Initial Shut-In 1246 Circ Sub N/C T-Pulled 0253 11/04
 (E) Second Initial Flow 315 Hourly Standby 30 hrs 300 T-Out 0819
 (F) Second Final Flow 492 Mileage 32 RT 49.60
 (G) Final Shut-In 1728 Sampler _____
 (H) Final Hydrostatic 2161 Straddle _____
 Shale Packer _____
 Extra Packer _____
 Extra Recorder _____
 Day Standby _____
 Accessibility _____

Sub Total 1674.60

Comments rig worked on downworks for 3 hours.
 Ruined Shale Packer _____
 Ruined Packer _____
 Extra Copies _____
 Sub Total 0
 Total 1674.60
 MP/DST Disc't _____

Approved By _____ Our Representative [Signature]

TriLOBite Testing Inc. shall not be liable for damaged of any kind of the property or personnel of the one for whom a test is made, or for any loss suffered or sustained, directly or indirectly, through the use of its equipment, or its statements or opinion concerning the results of any test, tools lost or damaged in the hole shall be paid for at cost by the party for whom the test is made.



TRILOBITE TESTING INC.

1515 Commerce Parkway • Hays, Kansas 67601

Test Ticket

NO. 49766

4/10

Well Name & No. Wilkinson #1-22 Test No. 3 Date 11/06/12
 Company Hartman Oil Co. Elevation 3123 KB 3113 GL
 Address 10500 E. Berkeley Sq. Pkwy STE 100 Wichita, Ks 67206
 Co. Rep / Geo. KH Noah Rig H2 #3
 Location: Sec. 22 Twp. 17s Rge. 34w Co. Scott State Ks

Interval Tested 4841 - 4843 - 4854 Zone Tested Mississippian
 Anchor Length 11 Drill Pipe Run 4521 Mud Wt. 9.2
 Top Packer Depth 4838 Drill Collars Run 310 Vis 59
 Bottom Packer Depth 4843 Wt. Pipe Run 0 WL 11.2
 Total Depth 4854 Chlorides 9,000 ppm System LCM 2#

Blow Description IF: Surface blow, died @ 18 min.
ISI: No return.
FF: No blow
FSI: No return.

Rec	Feet of	%gas	%oil	%water	%mud
<u>2</u>	<u>MUD (LOW SPOTS)</u>				
Rec	Feet of	%gas	%oil	%water	%mud
Rec	Feet of	%gas	%oil	%water	%mud
Rec	Feet of	%gas	%oil	%water	%mud
Rec	Feet of	%gas	%oil	%water	%mud

Rec Total 2 BHT 122 Gravity - API RW - @ - °F Chlorides - ppm

(A) Initial Hydrostatic <u>2468</u>	<input checked="" type="checkbox"/> Test <u>1250</u>	T-On Location <u>1820 11/05</u>
(B) First Initial Flow <u>21</u>	<input type="checkbox"/> Jars	T-Started <u>1848</u>
(C) First Final Flow <u>22</u>	<input checked="" type="checkbox"/> Safety Joint <u>75</u>	T-Open <u>2034</u>
(D) Initial Shut-In <u>26</u>	<input checked="" type="checkbox"/> Circ Sub <u>4/c</u>	T-Pulled <u>2249</u>
(E) Second Initial Flow <u>21</u>	<input type="checkbox"/> Hourly Standby	T-Out <u>0119 11/06</u>
(F) Second Final Flow <u>21</u>	<input checked="" type="checkbox"/> Mileage <u>32 RT</u>	Comments
(G) Final Shut-In <u>23</u>	<input type="checkbox"/> Sampler	
(H) Final Hydrostatic <u>2386</u>	<input type="checkbox"/> Straddle	<input type="checkbox"/> Ruined Shale Packer
	<input type="checkbox"/> Shale Packer	<input type="checkbox"/> Ruined Packer
Initial Open <u>30</u>	<input type="checkbox"/> Extra Packer	<input type="checkbox"/> Extra Copies
Initial Shut-In <u>45</u>	<input type="checkbox"/> Extra Recorder	Sub Total <u>0</u>
Final Flow <u>30</u>	<input type="checkbox"/> Day Standby	Total <u>1374.60</u>
Final Shut-In <u>30</u>	<input type="checkbox"/> Accessibility	MP/DST Disc't
	Sub Total <u>1374.60</u>	

Approved By [Signature] Our Representative [Signature]

Trilobite Testing Inc. shall not be liable for damaged of any kind of the property or personnel of the one for whom a test is made, or for any loss suffered or sustained, directly or indirectly, through the use of its equipment, or its statements or opinion concerning the results of any test, tools lost or damaged in the hole shall be paid for at cost by the party for whom the test is made.