

DRILL STEM TEST REPORT

Prepared For: **Craig Oil Company**

15 South Main
Russell, Kansas 67665+2901

ATTN: Jeff Lawler

Krug #10

7/15S/13W/Russell

Start Date: 2012.11.07 @ 16:19:00

End Date: 2012.11.07 @ 20:57:30

Job Ticket #: 16911 DST #: 1

Superior Testers Enterprises LLC
PO Box 138 Great Bend KS 67530
1-800-792-6902

Printed: 2012.11.11 @ 08:26:48

Craig Oil Company 7/15S/13W/Russell Krug #10 DST # 1 Arbuckle 2012.11.07

DRILL STEM TEST REPORT



Craig Oil Company
 15 South Main
 Russell, Kansas 67665+2901
 ATN: Jeff Lawler

7/15S/13W/Russell
 Krug #10
 Job Ticket: 16911
 DST #: 1
 Test Start: 2012.11.07 @ 16:19:00

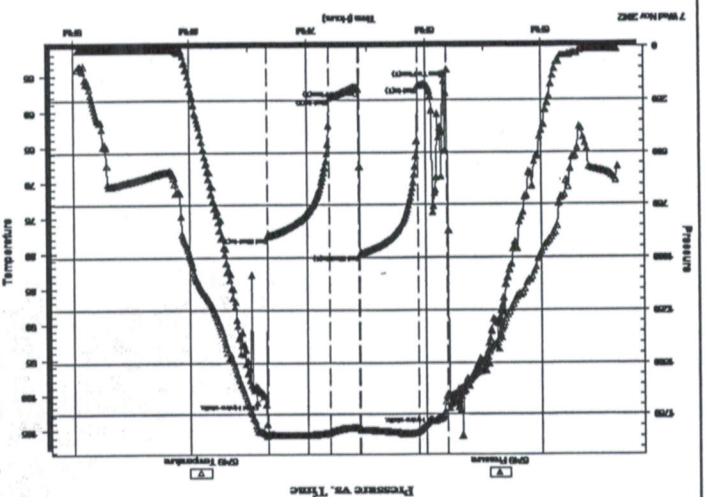
GENERAL INFORMATION:

Formation: Arbuckle
 Deviated: No
 Whipstock: No
 Time Tool Opened: 17:49:00
 Time Test Ended: 20:57:30
 Interval: 3283.00 ft (KB) To 3340.00 ft (KB) (TVD)
 Total Depth: 3365.00 ft (KB) (TVD)
 Hole Diameter: 7.80 inches
 Condition: Fair
 Reference Elevations: 1869.00 ft (KB)
 1862.00 ft (CF)
 7.00 ft
 KB to GRCF:

TEST COMMENT:

1ST Open 15 Minutes/Good blow/Blow built to bottom of bucket in 5 minutes
 1ST Shut in 30 Minutes/No blow back
 2ND Open 15 Minutes/Good blow/Blow built to bottom of bucket in 5 minutes
 2ND Shut in 30 Minutes/No blow back

Serial #: 6749
 Inside
 Press@RunDepth: 239.60 psia @ 3334.80 ft (KB)
 Start Date: 2012.11.07
 End Date: 2012.11.07
 Capacity: 5000.00 psia
 Last Callb.: 2012.11.07
 Time On Blm: 20:57:30
 Time Off Blm: 2012.11.07 @ 19:22:00



Annotation	Temp (deg F)	Pressure (psia)	Time (Min.)
Initial Hydro-static	100.13	1718.94	0
Open To Flow (1)	99.87	108.23	1
Shut-in(1)	105.09	185.18	16
End Shut-in(1)	104.86	978.90	46
Open To Flow (2)	104.65	198.56	47
Shut-in(2)	105.18	239.60	61
End Shut-in(2)	105.54	896.75	93
Final Hydro-static	105.35	1661.19	94

PRESSURE SUMMARY

Length (ft)	Description	Volume (bb)
30.00	Mud 100%	0.42
600.00	Muddy Water w th skim of oil	8.42
0.00	Mud 45% Water 54% Oil 1%	0.00

Recovery

Gas Rates	Choke (Inches)	Pressure (psia)	Gas Rate (Mcf/d)



DRILL STEM TEST REPORT

Craig Oil Company
 15 South Main
 Russell, Kansas 67665+2901
 ATTN: Jeff Lawler

7/15S/13W/Russell
Krug #10
 Job Ticket: 16911 DST#: 1
 Test Start: 2012.11.07 @ 16:19:00

GENERAL INFORMATION:

Formation: **Arbuckle**
 Deviated: No Whipstock: ft (KB)
 Time Tool Opened: 17:49:00
 Time Test Ended: 20:57:30

Test Type: Conventional Straddle (Initial)
 Tester: Ken Swinney
 Unit No: 3325 Great Bend/64

Interval: **3283.00 ft (KB) To 3340.00 ft (KB) (TVD)**
 Total Depth: 3365.00 ft (KB) (TVD)
 Hole Diameter: 7.80 inches Hole Condition: Fair

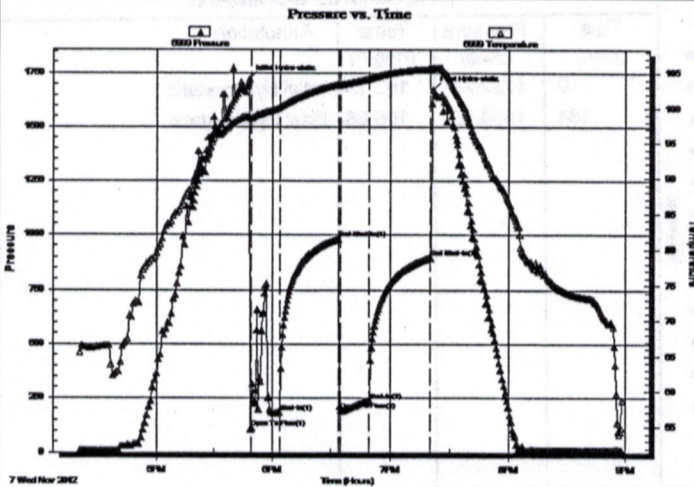
Reference Elevations: 1869.00 ft (KB)
 1862.00 ft (CF)
 KB to GR/CF: 7.00 ft

Serial #: 6999

Press@RunDepth: 897.17 psia @ ft (KB)
 Start Date: 2012.11.07 End Date: 2012.11.07
 Start Time: 16:20:00 End Time: 20:58:00

Capacity: 5000.00 psia
 Last Calib.: 2012.11.07
 Time On Btm: 2012.11.07 @ 17:48:30
 Time Off Btm: 2012.11.07 @ 19:21:30

TEST COMMENT: 1ST Open 15 Minutes/Good blow/Blow built to bottom of bucket in 5 minutes
 1ST Shut In 30 Minutes/No blow back
 2ND Open 15 Minutes/Good blow/Blow built to bottom of bucket in 5 minutes
 2ND Shut In 30 Minutes/No blow back



PRESSURE SUMMARY

Time (Min.)	Pressure (psia)	Temp (deg F)	Annotation
0	1723.23	98.78	Initial Hydro-static
1	112.13	98.52	Open To Flow (1)
16	183.96	100.10	Shut-In(1)
46	979.34	103.40	End Shut-In(1)
47	192.09	103.32	Open To Flow (2)
61	237.96	104.15	Shut-In(2)
92	897.17	105.54	End Shut-In(2)
93	1674.70	105.70	Final Hydro-static

Recovery

Length (ft)	Description	Volume (bbl)
30.00	Mud 100%	0.42
600.00	Muddy Water with skim of oil	8.42
0.00	Mud 45% Water 54% Oil 1%	0.00

Gas Rates

Choke (inches)	Pressure (psia)	Gas Rate (Mcf/d)

DRILL STEM TEST REPORT



Craig Oil Company
 15 South Main
 Russell, Kansas 67665+2901
 ATTN: Jeff Lawler

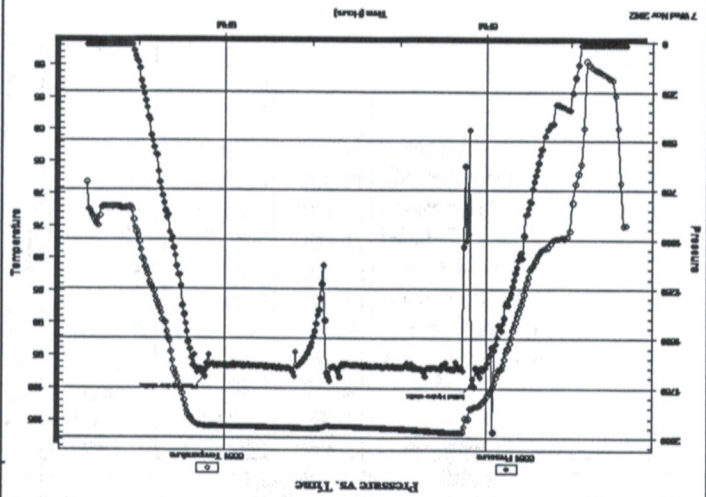
7/15S/13W/Russell
Krug #10
 Job Ticket: 16911
 DST#: 1
 Test Start: 2012.11.07 @ 16:19:00

GENERAL INFORMATION:

Formation: Arbuckle
 Deviated: No Whipstock:
 Time Tool Opened: 17:49:00
 Time Test Ended: 20:57:30
 Interval: 3283.00 ft (KB) To 3340.00 ft (KB) (TVD)
 Total Depth: 3365.00 ft (KB) (TVD)
 Hole Diameter: 7.80 inches/Hole Condition: Fair
 Reference Elevations: 1869.00 ft (KB) 1862.00 ft (CF) 7.00 ft
 KB to GR/CF:

Serial #: 6651
 Below
 Press@RunDepth: psia @ 3360.28 ft (KB)
 Start Date: 2012.11.07
 End Date: 2012.11.11
 Capacity: 5000.00 psia
 Last Callb.: 2012.11.11
 Time On Btm: 03:44:23
 Time Off Btm: 2012.11.07 @ 21:14:00

TEST COMMENT:
 1ST Open 15 Minutes/Good blow/Blow built to bottom of bucket in 5 minutes
 1ST Shut In 30 Minutes/No blow back
 2ND Open 15 Minutes/Good blow/Blow built to bottom of bucket in 5 minutes
 2ND Shut In 30 Minutes/No blow back



PRESSURE SUMMARY

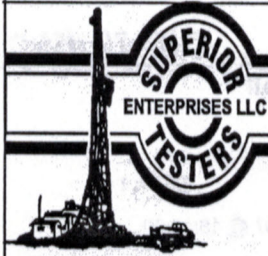
Time (Min.)	Pressure (psia)	Temp (deg F)	Annotation
0	1732.27	103.23	Initial Hydro-static
184	1690.52	105.86	Final Hydro-static

Recovery

Length (ft)	Description	Volume (bb)
30.00	Mud 100%	0.42
600.00	Muddy Water w/ th skim of oil	8.42
0.00	Mud 45% Water 54% Oil 1%	0.00

Gas Rates

Choke (inches)	Pressure (psia)	Gas Rate (Mcf/d)



DRILL STEM TEST REPORT

TOOL DIAGRAM

Craig Oil Company
 15 South Main
 Russell, Kansas 67665+2901
 ATTN: Jeff Lawler

7/15S/13W/Russell
 Krug #10
 Job Ticket: 16911 DST#: 1
 Test Start: 2012.11.07 @ 16:19:00

Tool Information

Drill Pipe:	Length: 3291.00 ft	Diameter: 3.80 inches	Volume: 46.16 bbl	Tool Weight: 2000.00 lb
Heavy Wt. Pipe:	Length: 0.00 ft	Diameter: 0.00 inches	Volume: 0.00 bbl	Weight set on Packer: 20000.00 lb
Drill Collar:	Length: 0.00 ft	Diameter: 0.00 inches	Volume: 0.00 bbl	Weight to Pull Loose: 45000.00 lb
			Total Volume: 46.16 bbl	Tool Chased 0.00 ft
Drill Pipe Above KB:	24.80 ft			String Weight: Initial 33000.00 lb
Depth to Top Packer:	3283.00 ft			Final 35000.00 lb
Depth to Bottom Packer:	3337.10 ft			
Interval between Packers:	54.10 ft			
Tool Length:	97.08 ft			
Number of Packers:	3	Diameter:	6.75 inches	
Tool Comments:				

Tool Description

Tool Description	Length (ft)	Serial No.	Position	Depth (ft)	Accum. Lengths
Shut In Tool	5.00			3271.20	
Hydraulic Tool	5.00			3276.20	
Packer	5.00			3281.20	16.80 Bottom Of Top Packer
Packer	1.80			3283.00	
Perforations	5.00			3288.00	
Change over sub	0.64			3288.64	
Drill Pipe	30.50			3319.14	
Change over sub	0.66			3319.80	
Handling sub	5.00			3324.80	
Perforations	10.00			3334.80	
Recorder	0.00	6748	Inside	3334.80	
Recorder	0.00	6749	Inside	3334.80	
Blank Off Sub	0.67			3335.47	
Travel Collar	1.63			3337.10	
Packer	1.60			3338.70	54.10 Tool Interval
Packer	1.58			3340.28	
Perforations	20.00			3360.28	
Recorder	0.00	6651	Below	3360.28	
Bullnose	3.00			3363.28	26.18 Bottom Packers & Anchor

Total Tool Length: 97.08



DRILL STEM TEST REPORT

FLUID SUMMARY

Craig Oil Company
 15 South Main
 Russell, Kansas 67665+2901
 ATTN: Jeff Lawler
 Job Ticket: 16911
 DST#: 1
 7/15S/13W/Russell
 Krug #10
 Test Start: 2012.11.07 @ 16:19:00

Mud and Cushion Information

Mud Type: Gel Chem
 Mud Weight: 9.00 lb/gal
 Viscosity: 63.00 sec/qt
 Water Loss: 8.79 in³
 Resistivity: ohm.m
 Salinity: 3000.00 ppm
 Filter Cake: 1.00 inches
 Cushion Type:
 Cushion Length: ft
 Cushion Volume: bbl
 Gas Cushion Type:
 Gas Cushion Pressure: psia
 Oil API: deg API
 Water Salinity: ppm

Recovery Information

Recovery Table

Length ft	Description	Volume bbl
30.00	Mud 100%	0.421
600.00	Muddy Water w rth skim of oil	8.416
0.00	Mud 45% Water 54% Oil 1%	0.000

Total Length: 630.00 ft
 Total Volume: 8.837 bbl
 Num Fluid Samples: 0
 Laboratory Name:
 Recovery Comments:
 Laboratory Location:
 Num Gas Bombs: 0
 Serial #:

Serial #: 6749

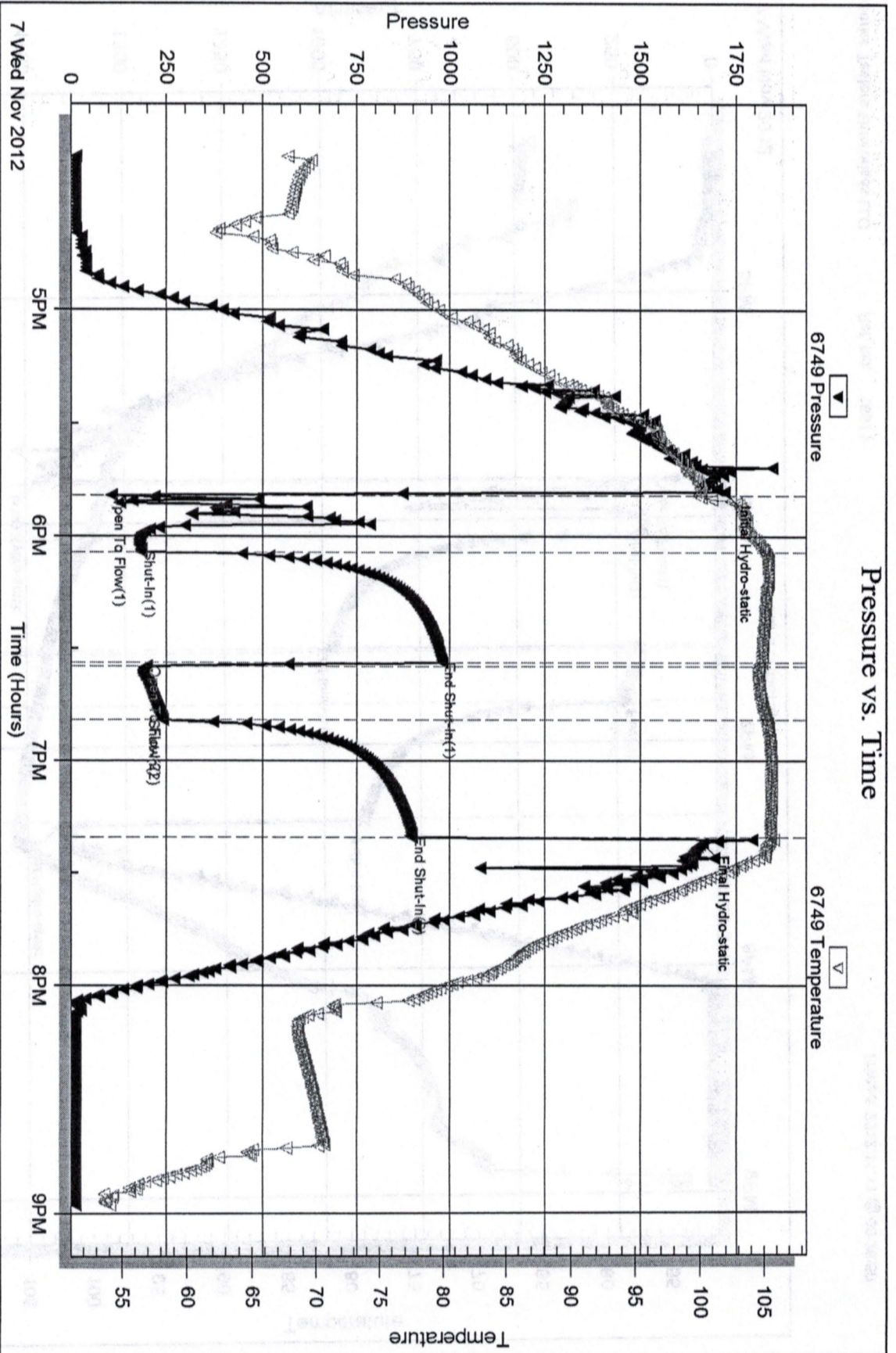
Inside

Craig Oil Company

Krug #10

DST Test Number: 1

Pressure vs. Time



Superior Testers Enterprises LLC

Ref. No: 16911

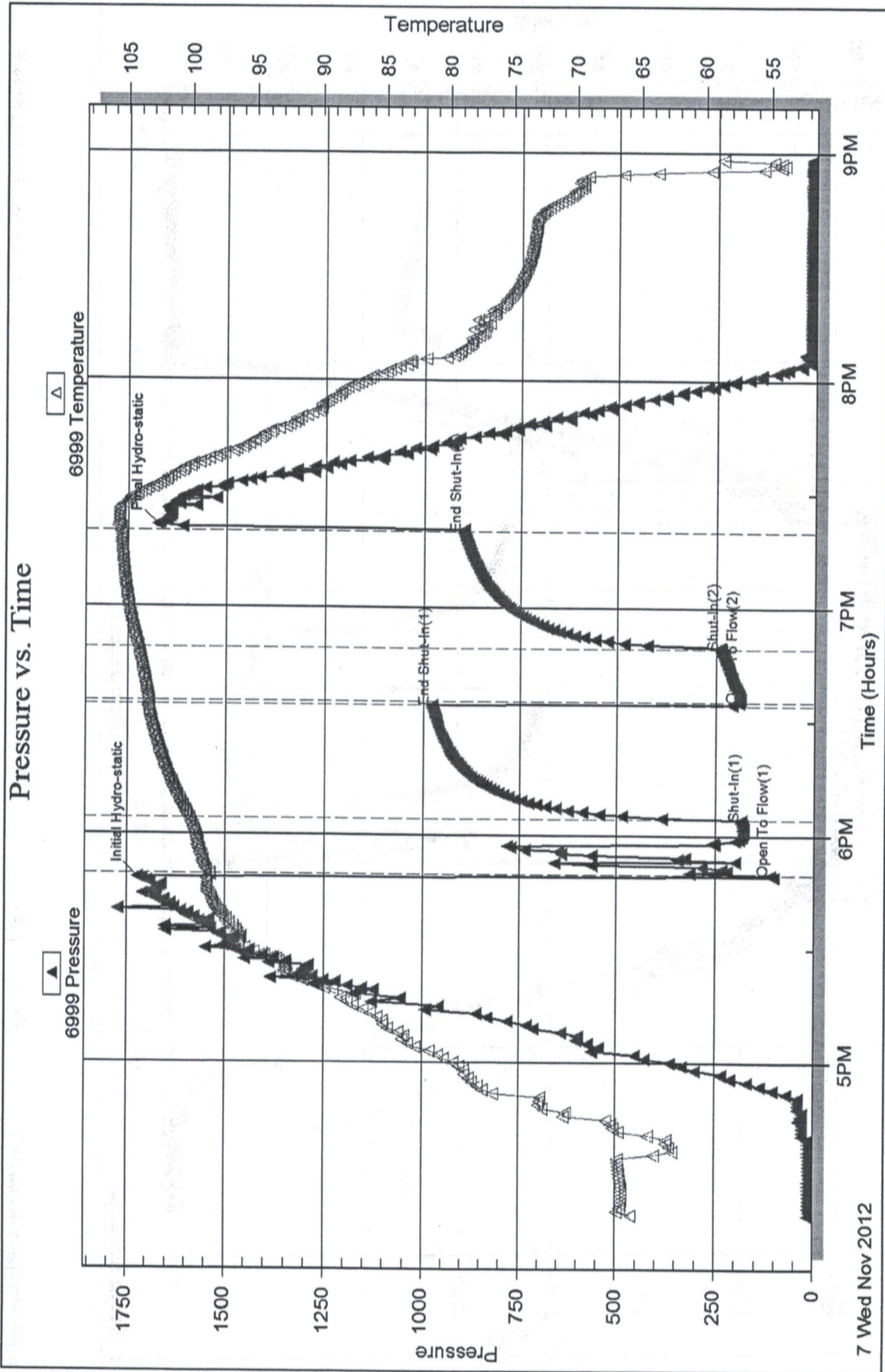
Printed: 2012.11.11 @ 08:26:50

Serial #: 6999

Craig Oil Company

Krug #10

DST Test Number: 1



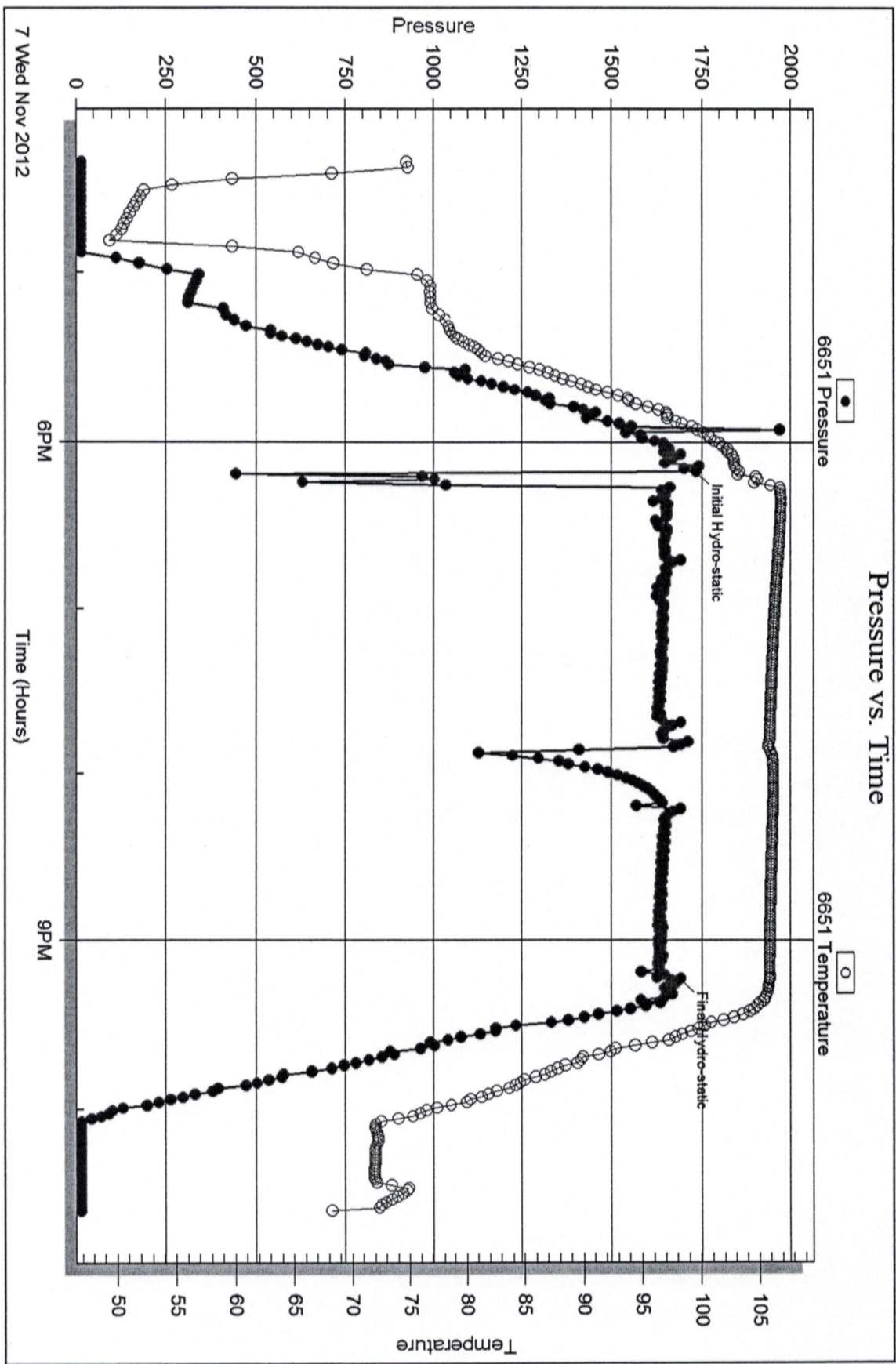
Serial #: 6651

Below

Craig Oil Company

Krug #10

DST Test Number: 1



Superior Testers Enterprises LLC

Ref. No: 16911

Printed: 2012.11.11 @ 08:26:50



DRILL STEM TEST REPORT

Prepared For: **Craig Oil Company**

15 South Main
Russell, Kansas 67665+2901

ATTN: Jeff Lawler

Krug #10

7/15S/13W/Russell

Start Date: 2012.11.07 @ 00:00:00

End Date:

Job Ticket #: 16912

DST #: 2

Superior Testers Enterprises LLC
PO Box 138 Great Bend KS 67530
1-800-792-6902

Printed: 2012.11.11 @ 08:27:33

Craig Oil Company
7/15S/13W/Russell
Krug #10
DST # 2
Arbuckle
2012.11.07

DRILL STEM TEST REPORT



Craig Oil Company
 15 South Main
 Russell, Kansas 67665+2901
 ATTN: Jeff Lawler

7/15S/13W/Russell
 Krug #10
 Job Ticket: 16912
 DST#: 2
 Test Start: 2012.11.07 @ 00:00:00

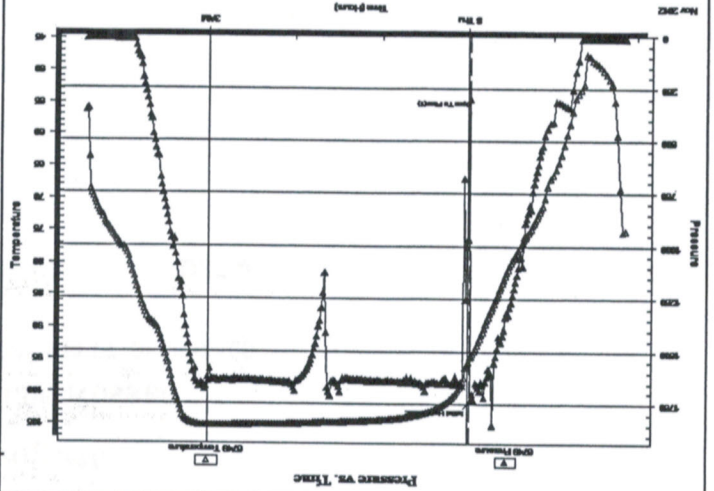
GENERAL INFORMATION:

Formation: Arbuckle
 Deviated: No
 Whipstock: No
 Time Tool Opened:
 Time Test Ended:
 Interval: 3331.00 ft (KB) To 3341.00 ft (KB) (TVD)
 Total Depth: 3365.00 ft (KB) (TVD)
 Hole Diameter: 7.80 inches-Hole Condition: Poor
 Serial #: 6749
 Inside
 Press@RunDepth: psia @ 3335.00 ft (KB)
 Start Date: 2012.11.07
 End Date: 2012.11.08
 Capacity: 5000.00 psia
 Last Calib.: 2012.11.08
 Time On Btm: 04:25:30
 Time Off Btm: 2012.11.07 @ 23:58:00
 Reference Elevations: 1869.00 ft (KB)
 1862.00 ft (CF)
 7.00 ft
 Unit No: 3325 Great Bend/64
 Test Type: Conventional Straddle (Initial)
 Tester: Ken Sw Inney
 KB to GRCF: 7.00 ft

TEST COMMENT: 1ST Open 30 Minutes/Weak blow/Blow built to 4 1/2 inches then died to 4 inches
 1ST Shut In 60 Minutes/No blow back
 2ND Open 30 Minutes/Dead no blow/Flush tool/Weak surface blow died in 7 minutes
 2ND Shut In 60 Minutes/No blow back

PRESSURE SUMMARY

Time (Min.)	0	1
Pressure (psia)	1732.22	300.69
Temp (deg F)	94.74	94.55
Annotation	Initial Hydro-static	Open To Flow (1)



Recovery

Length (ft)	35.00
Description	Mud 100%
Volume (bbl)	0.49

Gas Rates

Choke (inches)	Pressure (psia)	Gas Rate (Mcf/d)

TOOL DIAGRAM

DRILL STEM TEST REPORT



Craig Oil Company

7/15S/13W/Russell

15 South Main
Russell, Kansas 67665+2901

Krug #10

Job Ticket: 16912
DST#: 2

ATTN: Jeff Lawler

Test Start: 2012.11.07 @ 00:00:00

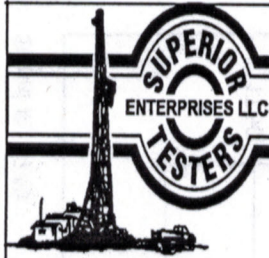
Tool Information

Drill Pipe: Length: 3322.00 ft Diameter: 3.80 inches Volume: 46.60 bbl
 Heavy Wt. Pipe: Length: 0.00 ft Diameter: 0.00 inches Volume: 0.00 bbl
 Drill Collar: Length: 0.00 ft Diameter: 0.00 inches Volume: 0.00 bbl
 Drill Pipe Above KB: 7.80 ft
 Depth to Top Packer: 3331.00 ft
 Depth to Bottom Packer: 3362.48 ft
 Interval between Packers: 31.48 ft
 Tool Length: 48.28 ft
 Number of Packers: 3 Diameter: 6.75 inches
 Tool Comments:

Tool Weight: 2000.00 lb
 Weight set on Packer: 20000.00 lb
 Weight to Pull Loose: 50000.00 lb
 Tool Chased 1.00 ft
 String Weight: Initial 32000.00 lb
 Final 33000.00 lb

Tool Description Length (ft) Serial No. Position Depth (ft) Accum. Lengths

Shut In Tool	5.00			3319.20	
Hydraulic Tool	5.00			3324.20	
Packer	5.00			3329.20	16.80
Packer	1.80			3331.00	
Perforations	4.00			3335.00	
Recorder	0.00	6651	Inside	3335.00	
Recorder	0.00	6749	Inside	3335.00	
Blank Off Sub	0.67			3335.67	
Travel Collar	1.63			3337.30	
Packer Anchor Side	1.60			3338.90	
Packer Tail Side	1.58			3340.48	
Handling Sub	5.00			3345.48	
Perforations	14.00			3359.48	
Recorder	0.00	6999	Below	3359.48	
Bullnose	3.00			3362.48	31.48
Total Tool Length: 48.28					



DRILL STEM TEST REPORT

FLUID SUMMARY

Craig Oil Company
15 South Main
Russell, Kansas 67665+2901
ATTN: Jeff Lawler

7/15S/13W/Russell
Krug #10
Job Ticket: 16912 DST#: 2
Test Start: 2012.11.07 @ 00:00:00

Mud and Cushion Information

Mud Type: Gel Chem
Mud Weight: 9.00 lb/gal
Viscosity: 63.00 sec/qt
Water Loss: 8.78 in³
Resistivity: ohm.m
Salinity: 3000.00 ppm
Filter Cake: 1.00 inches

Cushion Type:
Cushion Length: ft
Cushion Volume: bbl
Gas Cushion Type:
Gas Cushion Pressure: psia

Oil API: deg API
Water Salinity: ppm

Recovery Information

Recovery Table

Length ft	Description	Volume bbl
35.00	Mud 100%	0.491

Total Length: 35.00 ft Total Volume: 0.491 bbl

Num Fluid Samples: 0 Num Gas Bombs: 0 Serial #:
Laboratory Name: Laboratory Location:
Recovery Comments:

DST Test Number: 2

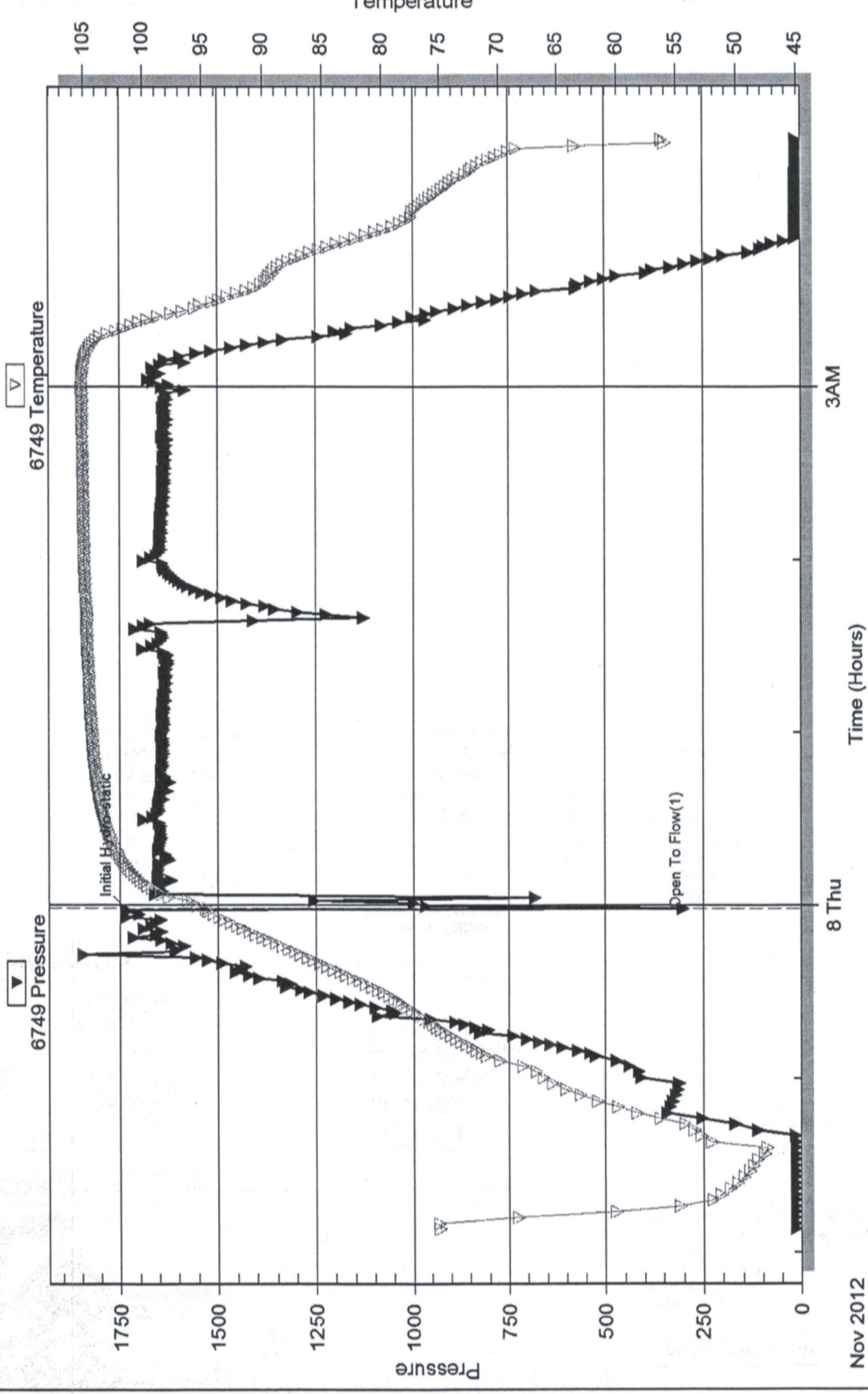
Krug #10

Craig Oil Company

Inside

Serial #: 6749

Pressure vs. Time



Printed: 2012.11.11 @ 08:27:34

Ref. No: 16912

Superior Testers Enterprises LLC

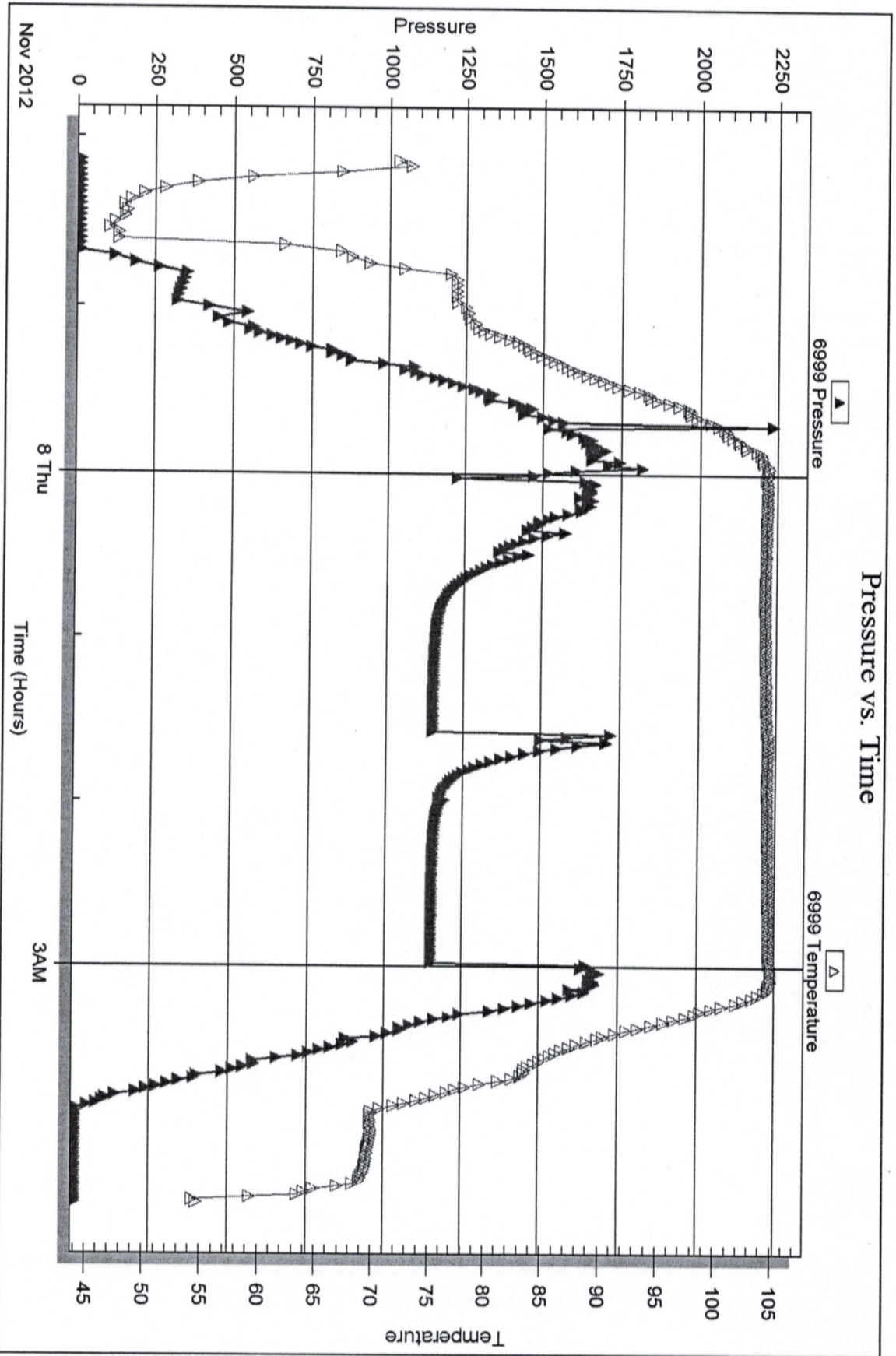
Serial #: 6999

Below

Craig Oil Company

Krug #10

DST Test Number: 2





DRILL STEM TEST REPORT

Prepared For: **Craig Oil Company**

15 South Main
Russell, Kansas 67665+2901

ATTN: Jeff Lawler

Krug #10

7/15S/13W/Russell

Start Date: 2012.11.08 @ 09:00:00

End Date: 2012.11.08 @ 14:30:00

Job Ticket #: 16913 DST #: 3

Superior Testers Enterprises LLC
PO Box 138 Great Bend KS 67530
1-800-792-6902

Printed: 2012.11.11 @ 08:27:49

Craig Oil Company
7/15S/13W/Russell
Krug #10
DST # 3
Lansing/Kansas City
2012.11.08

DRILL STEM TEST REPORT



Craig Oil Company
 15 South Main
 Russell, Kansas 67665+2901
 ATTN: Jeff Lawler

Krug #10
 Job Ticket: 16913
 DST#: 3
 Test Start: 2012.11.08 @ 09:00:00

GENERAL INFORMATION:

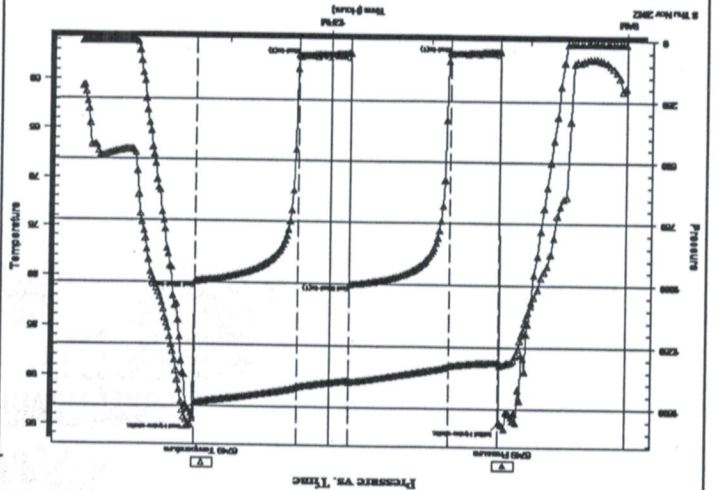
Formation: Lansing/Kansas City
 Deviated: No Whipstock:
 Time Tool Opened: 10:18:30
 Time Test Ended: 14:30:00
 Interval: 3058.00 ft (KB) To 3100.00 ft (KB) (TVD)
 Total Depth: 3365.00 ft (KB) (TVD)
 Hole Diameter: 7.80 inches-hole Condition: Fair
 Reference Elevations: 1869.00 ft (KB)
 1862.00 ft (CF)
 7.00 ft
 KB to GR/CF:

Serial #: 6749
 Inside
 Press@RunDepth: 66.81 psia @ 3094.00 ft (KB)
 Start Date: 2012.11.08
 End Date: 2012.11.08
 Start Time: 09:01:00
 End Time: 14:30:00
 Capacity: 5000.00 psia
 Last Calib.: 2012.11.08
 Time On Btm: 2012.11.08 @ 10:18:00
 Time Off Btm: 2012.11.08 @ 13:21:30

TEST COMMENT:
 1ST Open 30 Minutes/Weak blow/Blow built to 3 1/2 inches
 1ST Shut In 60 Minutes/Very weak surface blow back
 2ND Open 30 Minutes/Weak blow/Blow built to 2 1/2 inches
 2ND Shut In 60 Minutes/Light surface blow back

PRESSURE SUMMARY

Time (Min.)	Pressure (psia)	Temp (deg F)	Annotation
0	1552.67	88.73	Initial Hydro-static
1	43.99	88.25	Open To Flow (1)
31	55.70	88.81	Shut-In(1)
90	1001.60	90.57	End Shut-In(1)
91	56.34	90.30	Open To Flow (2)
121	66.81	91.11	Shut-In(2)
183	993.54	92.76	End Shut-In(2)
184	1537.36	94.39	Final Hydro-static

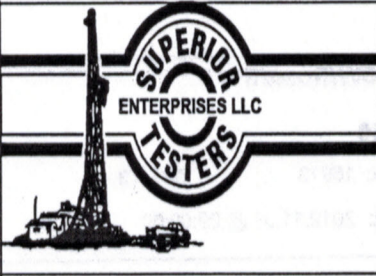


Recovery

Length (ft)	Description	Volume (bbl)
50.00	Mud 100%	0.70

Gas Rates

Choke (inches)	Pressure (psia)	Gas Rate (Mcf/d)



DRILL STEM TEST REPORT

Craig Oil Company
 15 South Main
 Russell, Kansas 67665+2901
 ATTN: Jeff Lawler

7/15S/13W/Russell
Krug #10
 Job Ticket: 16913 **DST#: 3**
 Test Start: 2012.11.08 @ 09:00:00

GENERAL INFORMATION:

Formation: **Lansing/Kansas City**
 Deviated: **No** Whipstock: ft (KB)
 Time Tool Opened: 10:18:30
 Time Test Ended: 14:30:00

Test Type: **Conventional Straddle (Initial)**
 Tester: **Ken Swinney**
 Unit No: **3325 Great Bend/64**

Interval: **3058.00 ft (KB) To 3100.00 ft (KB) (TVD)**
 Total Depth: **3365.00 ft (KB) (TVD)**
 Hole Diameter: **7.80 inches** Hole Condition: **Fair**

Reference Elevations: **1869.00 ft (KB)**
1862.00 ft (CF)
 KB to GR/CF: **7.00 ft**

Serial #: 6999

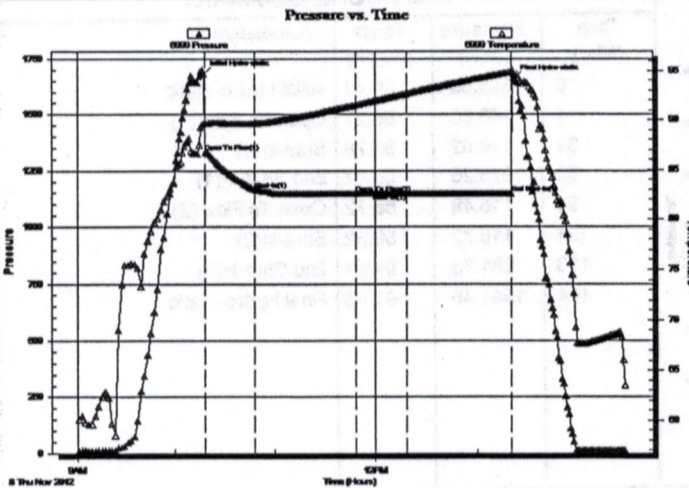
Below

Press@RunDepth: **1147.59 psia @ 3360.25 ft (KB)**
 Start Date: **2012.11.08** End Date: **2012.11.08**
 Start Time: **09:01:00** End Time: **14:28:30**

Capacity: **5000.00 psia**
 Last Calib.: **2012.11.08**
 Time On Btm: **2012.11.08 @ 10:17:30**
 Time Off Btm: **2012.11.08 @ 13:21:30**

TEST COMMENT: 1ST Open 30 Minutes/Weak blow/Blow built to 3 1/2 inches
 1ST Shut In 60 Minutes/Very weak surface blow back
 2ND Open 30 Minutes/Weak blow/Blow built to 2 1/2 inches
 2ND Shut In 60 Minutes/Light surface blow back

PRESSURE SUMMARY



Time (Min.)	Pressure (psia)	Temp (deg F)	Annotation
0	1681.99	89.64	Initial Hydro-static
2	1331.33	89.63	Open To Flow (1)
31	1166.21	89.67	Shut-In(1)
91	1147.75	91.51	Open To Flow (2)
121	1147.68	92.63	Shut-In(2)
183	1147.59	94.87	End Shut-In(1)
184	1659.97	94.59	Final Hydro-static

Recovery

Length (ft)	Description	Volume (bbl)
50.00	Mud 100%	0.70

Gas Rates

Choke (inches)	Pressure (psia)	Gas Rate (Mcf/d)

DRILL STEM TEST REPORT



Craig Oil Company
 15 South Main
 Russell, Kansas 67665+2901
 ATTN: Jeff Lawler

7/15S/13W/Russell
 Krug #10
 Job Ticket: 16913
 DST#: 3
 Test Start: 2012.11.08 @ 09:00:00

GENERAL INFORMATION:

Formation: Lansing/Kansas City
 Deviated: No Whipstock
 Time Tool Opened: 10:18:30
 Time Test Ended: 14:30:00
 Interval: 3058.00 ft (KB) To 3100.00 ft (KB) (TVD)
 Total Depth: 3365.00 ft (KB) (TVD)
 Hole Diameter: 7.80 inches-Hole Condition: Fair
 KB to GR/CF: 7.00 ft

Serial #: 6838

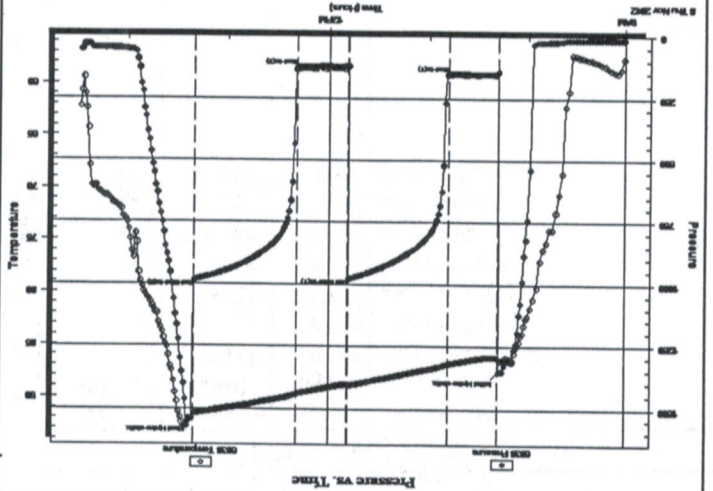
Press@RunDepth: 981.73 psia @ 3094.00 ft (KB)

Start Date: 2012.11.08
 End Date: 2012.11.08
 Start Time: 09:01:00
 End Time: 14:29:30
 Capacity: 5000.00 psia
 Last Calib.: 2012.11.08
 Time On Btm: 2012.11.08 @ 10:18:00
 Time Off Btm: 2012.11.08 @ 13:21:30

TEST COMMENT:
 1ST Open 30 Minutes/Weak blow/Blow built to 3 1/2 inches
 1ST Shut In 60 Minutes/Very weak surface blow back
 2ND Open 30 Minutes/Weak blow/Blow built to 2 1/2 inches
 2ND Shut In 60 Minutes/Light surface blow back

PRESSURE SUMMARY

Time (Min.)	Pressure (psia)	Temp (deg F)	Annotation
0	1349.65	86.44	Initial Hydro-static
1	140.60	86.27	Open To Flow (1)
31	146.62	86.78	Shut-in(1)
90	975.26	88.82	End Shut-in(1)
91	115.49	88.72	Open To Flow (2)
121	118.72	89.62	Shut-in(2)
183	981.73	91.51	End Shut-in(2)
184	1541.46	91.96	Final Hydro-static

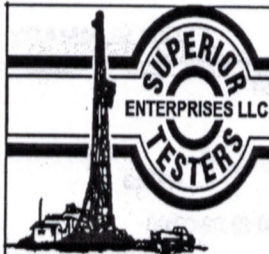


Recovery

Length (ft)	Description	Volume (bbl)
50.00	Mud 100%	0.70

Gas Rates

Choke (inches)	Pressure (psia)	Gas Rate (Mcf/d)



DRILL STEM TEST REPORT

TOOL DIAGRAM

Craig Oil Company
 15 South Main
 Russell, Kansas 67665+2901

7/15S/13W/Russell

Krug #10

Job Ticket: 16913

DST#: 3

ATTN: Jeff Lawler

Test Start: 2012.11.08 @ 09:00:00

Tool Information

Drill Pipe:	Length: 3047.00 ft	Diameter: 3.80 inches	Volume: 42.74 bbl	Tool Weight: 2000.00 lb
Heavy Wt. Pipe:	Length: 0.00 ft	Diameter: 0.00 inches	Volume: 0.00 bbl	Weight set on Packer: 20000.00 lb
Drill Collar:	Length: 0.00 ft	Diameter: 0.00 inches	Volume: 0.00 bbl	Weight to Pull Loose: 45000.00 lb
			<u>Total Volume: 42.74 bbl</u>	Tool Chased 0.00 ft
Drill Pipe Above KB:	5.80 ft			String Weight: Initial 35000.00 lb
Depth to Top Packer:	3058.00 ft			Final 35000.00 lb
Depth to Bottom Packer:	3363.25 ft			
Interval between Packers:	305.25 ft			
Tool Length:	322.05 ft			
Number of Packers:	3	Diameter: 6.75 inches		

Tool Comments:

Tool Description	Length (ft)	Serial No.	Position	Depth (ft)	Accum. Lengths
Shut In Tool	5.00			3046.20	
Hydraulic Tool	5.00			3051.20	
Packer	5.00			3056.20	16.80 Bottom Of Top Packer
Packer	1.80			3058.00	
Handling Sub	5.00			3063.00	
Perforations	31.00			3094.00	
Recorder	0.00	6838	Inside	3094.00	
Recorder	0.00	6749	Inside	3094.00	
Blank Off Sub	0.67			3094.67	
Travel Collar	1.63			3096.30	
Packer Anchor side	1.60			3097.90	
Packer Tail Side	1.58			3099.48	
Perforations	5.00			3104.48	
Change over sub	0.79			3105.27	
Drill Pipe	249.32			3354.59	
Change Over Sub	0.66			3355.25	
Perforations	5.00			3360.25	
Recorder	0.00	6999	Below	3360.25	
Bullnose	3.00			3363.25	305.25 Bottom Packers & Anchor

Total Tool Length: 322.05



DRILL STEM TEST REPORT

FLUID SUMMARY

Craig Oil Company
 15 South Main
 Russell, Kansas 67665+2901
 ATTN: Jeff Lawler
 Job Ticket: 16913
 DST#: 3
 Test Start: 2012.11.08 @ 09:00:00

Mud and Cushion Information

Mud Type: Gel Chem
 Mud Weight: 9.00 lb/gal
 Viscosity: 46.00 sec/qt
 Water Loss: 11.19 in³
 Resistivity: ohm.m
 Salinity: 8000.00 ppm
 Filter Cake: 1.00 inches

Cushion Type:
 Cushion Length: ft
 Cushion Volume: bbl
 Gas Cushion Type:
 Gas Cushion Pressure: psia
 Oil API: deg API
 Water Salinity: ppm

Recovery Information

Length ft	Description	Volume bbl
50.00	Mud 100%	0.701

Recovery Table

Total Length: 50.00 ft
 Total Volume: 0.701 bbl
 Num Fluid Samples: 0
 Laboratory Name:
 Laboratory Location:
 Recovery Comments:
 Num Gas Bombs: 0
 Serial #:

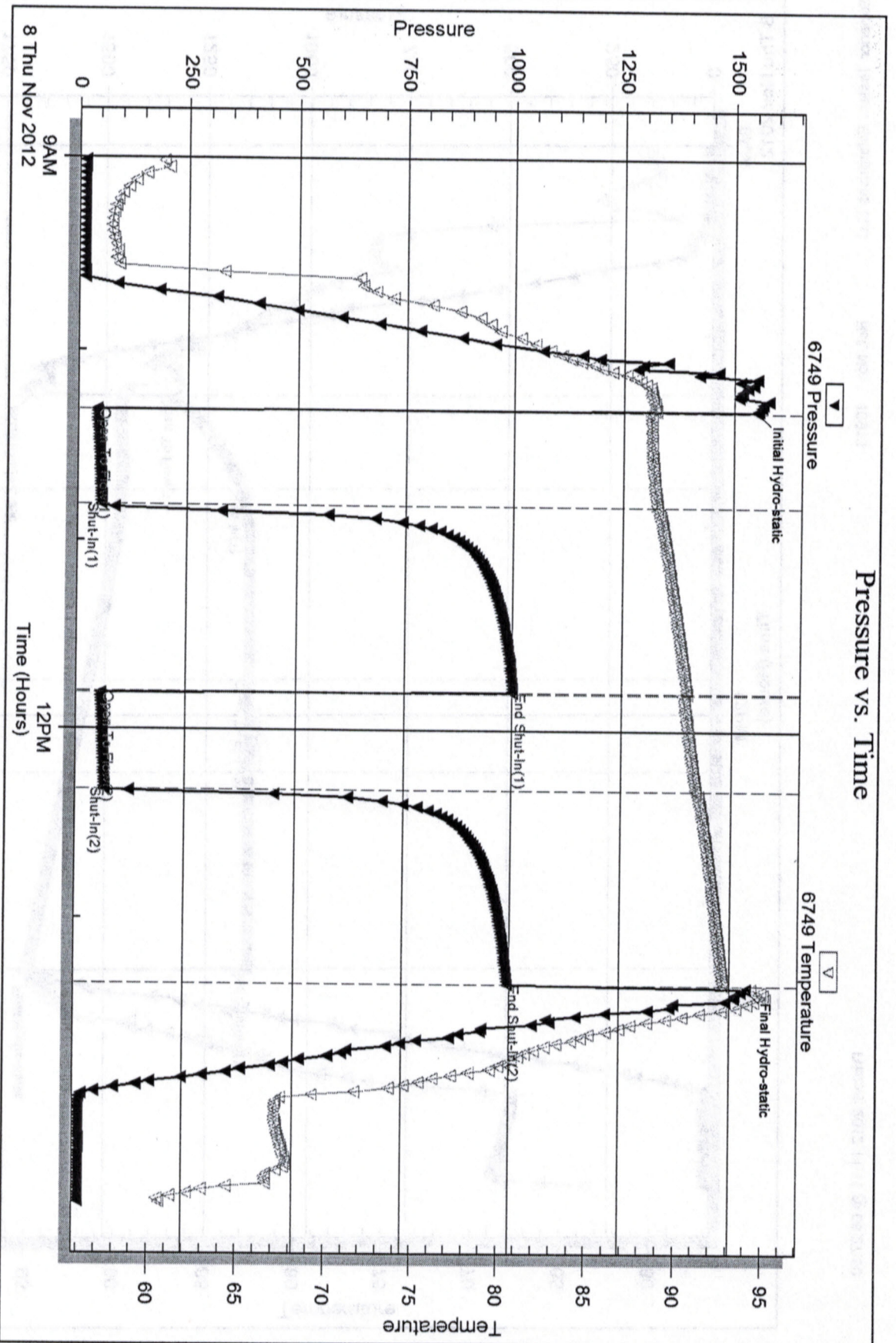
Serial #: 6749

Inside

Craig Oil Company

Krug #10

DST Test Number: 3

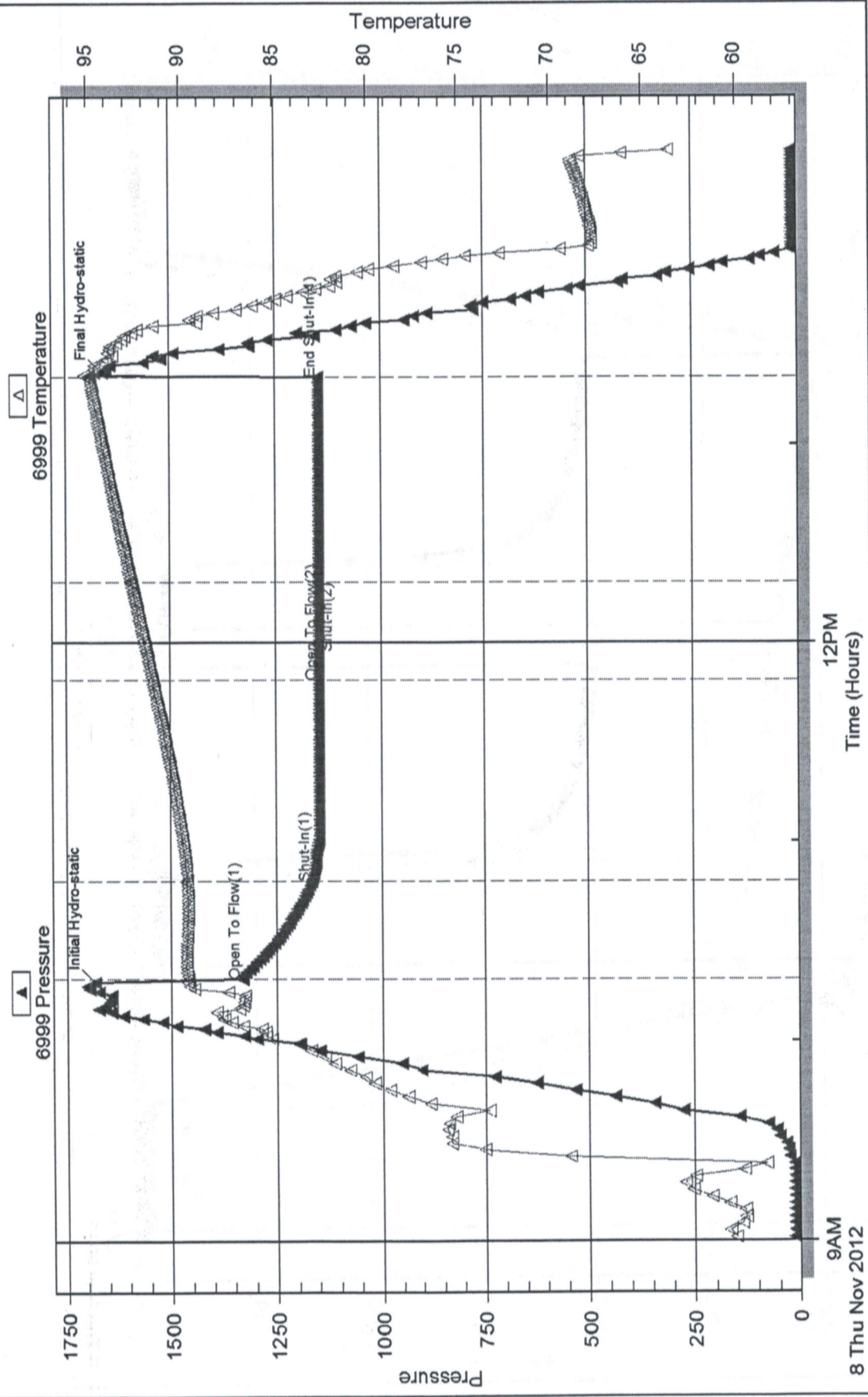


Superior Testers Enterprises LLC

Ref. No.: 16913

Printed: 2012.11.11 @ 08:27:50

Pressure vs. Time



Serial #: 6838

Inside

Craig Oil Company

Krig #10

DST Test Number: 3

