

# GEOLOGIST'S REPORT

DRILLING TIME AND SAMPLE LOG

COMPANY Trans Pacific Oil Corp.

WELL Hanks 'B' #1-14

FIELD \_\_\_\_\_

LOCATION 1815'FSL, 825'FEL

SEC 14 TWP 17S RGE 27W

COUNTY Lane STATE Kansas

CONTRACTOR Duke Drilling Rig 4

START 9-19-2012 COMP 9-28-2012

DEPTH 4585' TO 4586'

WELL OR 3500' TYPE AND Chemical

SAMPLES SAVED FROM 3840'

DRILLING TIME KEPT FROM 3700'

SAMPLES EXAMINED FROM 3840'

GEOLOGICAL SUPERVISION FROM 3710'

GEOLOGIST ON WELL W. Bryce Bidleman

FORMATION TOPS	LOG	SAMPLES
Anhydrite	2010 (+598)	2007 (+601)
Base Anhydrite	2041 (+567)	2042 (+566)
Heebner	3875 (-1267)	3876 (-1268)
Lansing	3913 (-1305)	3915 (-1307)
Kansas City	3992 (-1384)	3992 (-1384)
Base Kansas City	4242 (-1634)	4241 (-1633)
Marmaton	4270 (-1662)	4268 (-1660)
Fort Scott	4428 (-1820)	4427 (-1819)
Cherokee Lime	4457 (-1849)	4456 (-1848)
Mississippi	4534 (-1926)	4531 (-1923)

## ELEVATIONS

KB 2608

DE \_\_\_\_\_

EL 2599

Measurements Are All From K.B.

## CASING

SURFACE 8 7/8" @ 266'

PRODUCTION 4 1/2" @ 4569'

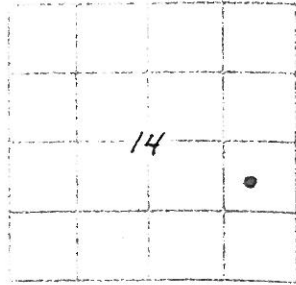
FACTORY SERIALS \_\_\_\_\_

KB T.D.

DE T.D.

EL T.D.

EL T.D.



REMARKS Due to positive drill stem test results in the Kansas City 180' and 200' zones was decided to set 4 1/2" production casing to further test these zones for production.

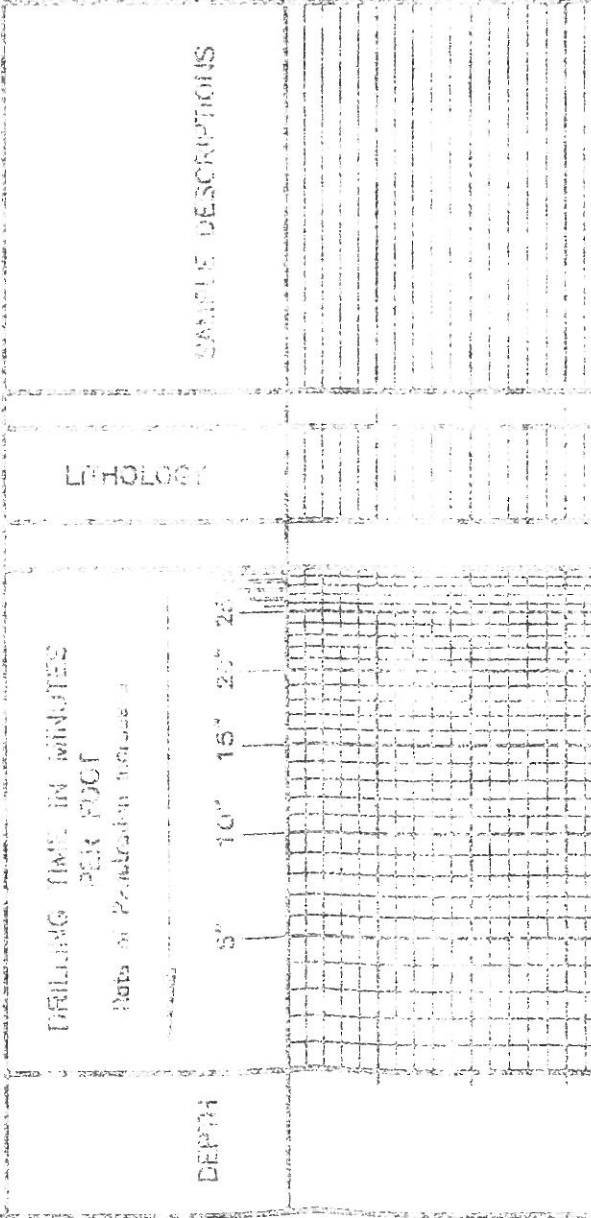
*Respectfully,*

*W. Bryce Bidleman*

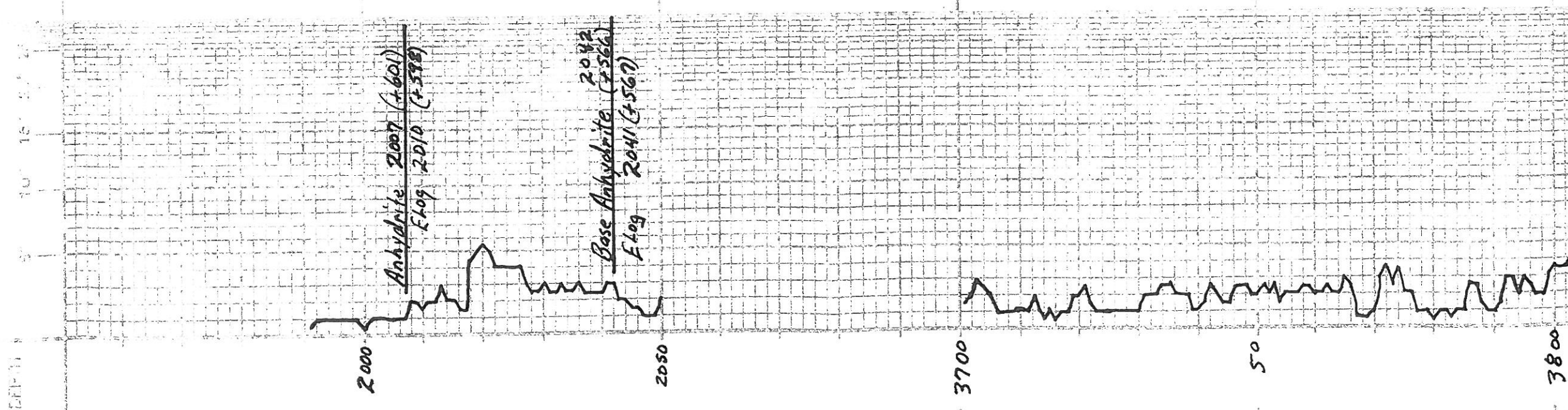
## LEGEND

- Anhydrite
- Sandstone
- Shale
- Limestone
- Oil Line
- Casing
- Delimitation

SCALE 1" = 100'



POSSIBLE PRODUCTION (Tons)



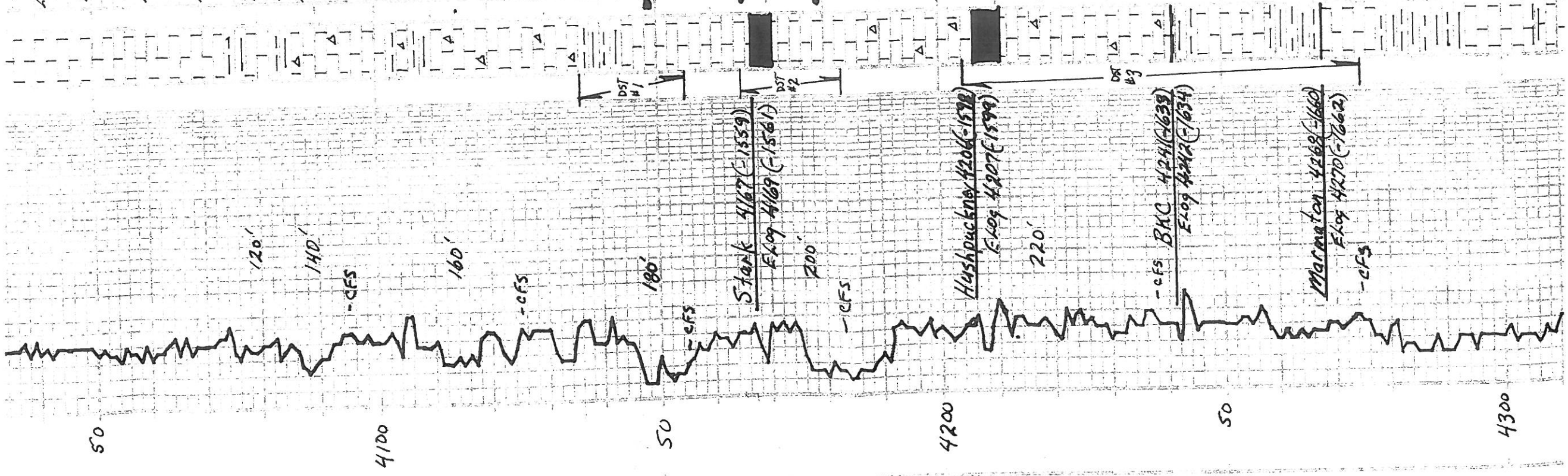
THOLOGY

SAMPLE DESCRIPTIONS

REMARKS







LM-TM, Fx, FOSS, PELLETS, DSM, CHKY IN PT.  
 LM-AA, SL IMPR. IN CHK.  
 LM-WX-BCRM, Fx, MOST DSE, CHKY IN PT.  
 LM-WX-T-CRM, Fx, FEW FOSS, DSE, CHKY IN PT.  
 LM-TM, Fx, DSE, HARD. SH-DK GRN → CY-BLK-CARB. → GR-TN.  
 LM-TM, Fx, DSE, HARD.  
 LM-CRM → TM, F → MX, Foss, P → FR VGGY, INT. VGGY, FR AMT SOFT WH GRN, N.S. CHT-WH, F → D.  
 LM-AA, N.S.

DST #1 4136'-4155'  
 30-75-60-90  
 1st Open - Wk, incrt to BOB  
 2nd Open - Fair, to BOB/5  
 No Blow Back.  
 Rec: 990' GIP  
 20' H MCD (60)  
 60' MCO (85%)  
 80' Total  
 FP: 9-20 / 20-38  
 SIP: 847 / 841  
 HP: 2021 / 2021

DST #2 4165'-4183'  
 30-75-60-90  
 1st Open - Strong, BOB / 4" blow back  
 2nd Open - Strong, BOB / 5" blow back - BOB / 15  
 Rec: 2870' GIP  
 279' CO (100%)  
 93' G. WCMO (4)  
 108' W  
 480' Total  
 FP: 24-85 / 92-195  
 SIP: 733 / 720  
 HP: 2065 / 2054

DST #3 4204'-4242'  
 30-60-30-60  
 1st Open - Weak ingfte backed off etc  
 2nd Open - Weak, surta  
 Rec: 10' OSPM (170)  
 FP: 9-12 / 11-15  
 SIP: 161 / 246  
 HP: 2069 / 2007

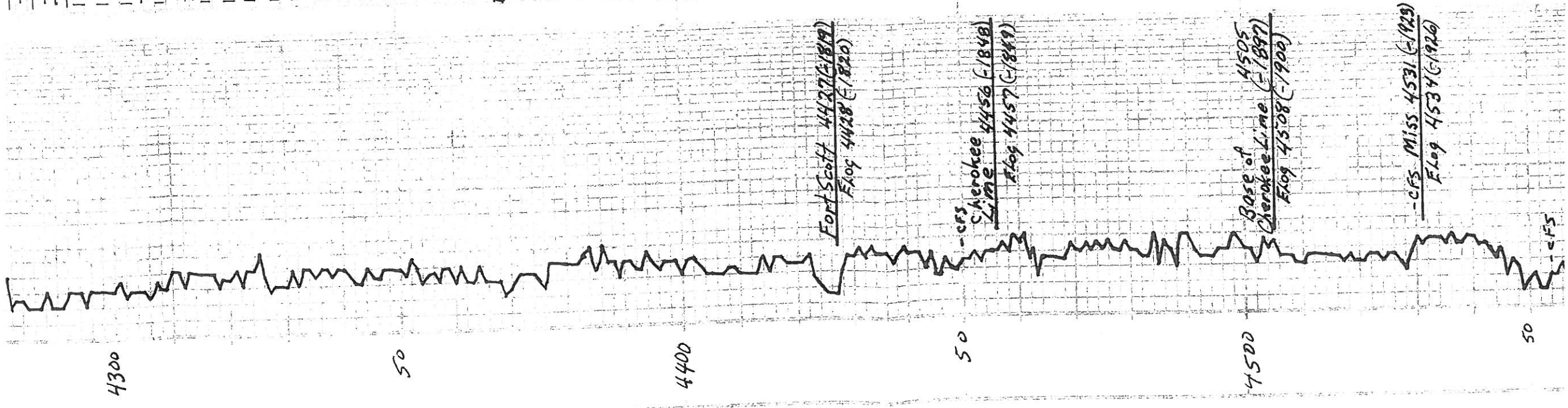
LM-CRM → TM, Fx, DSE.  
 CHT-WH → TM, SH-MAR → BK.  
 LM-CRM → TM, Fx, FEW FOSS, SCAT PR VGGY, PIN PT, FEW FRAC w/ 2nd CAL, 2nd W/STP, NO OA.  
 CHT-AA.  
 LM-FR 1st 100% in PT, PR, 2nd STN, NO ODR.  
 LM-TM → GR-TM, F → MX, FEW FOSS, OOLIT, F → G, COMED P → SOME INT. PPT, FOSS MID PLU, FR ODR. ABOVE 2nd CAL.

LM-TM → GR-TM, F → MX, DOLM IN PT, FEW FOSS, OOLIT, P → FR VGGY, PIN PT, 55% F → MOSTLY BARREL. TR → GR CUT. SOME SOFT WH CHK.  
 LM-CRM → TM → GR-TM, Fx, Foss, OOLIT IN PT, DSE, GRKY IN PT, N.S.  
 CHT-WX-BCRM → GR-TM, Fx, Foss, SH-BLK, CARB, SOFT.

LM-CRM → TM → GR-BW, Fx, Foss, OOLIT IN PT, DSE, GRKY IN PT, N.S.  
 HARD, SCATTER VGGY W/ DSE. GR-TM SCAT STR, NO ODR.  
 CHT-TM → GR-TM, Fx → MX, Foss, FEW FRAC, SPOTTY PR VGGY, INT. VGGY, P → FR, TM STN, VV WK ODR. FR → MX, Fx, FEW VV WK ODR. FR → MX, Fx, FEW VGGY, P → FR, TM STN, VV WK ODR. FR → MX, Fx, FEW VGGY, P → FR, TM STN, VV WK ODR.

SH-GR → BLK. CARB. IN PT.  
 LM-TM → GR-TM → GR-BW, Fx, DSE, HARD. N.S.  
 LM-CRM → TM, Fx, MOSTLY DSE, FR AMT ODR, N.S.  
 LM-AA, TM → GR-TM, Fx, DSE.  
 SH-GR → GR → BLK.  
 LM-CRM → TM, Fx, FEW FOSS, FR AMT SOFT, CHK, MOSTLY DSE w/ SCAT PR PIN PT, N.S.  
 SH-RD → GR → BK → BLK.

LM-TM → GR-TM → GR-BW, Fx, Foss, MOSTLY DSE, SCAT PR PIN PT, TR BLK, RESID STR, FC, W/PTA BLK. MARCO, NO ODR, NO Fx.



SH-AA. 1 PC W/ Foss, MOSTLY DSE, FEW FRAG OF SPARRY CAL, CHRY IN PT. N.S.

LM-TU → BWN/GY, FX, FDS, MOSTLY DSE, SCATT PR PIM PL, TR BLK RESID STR, 1 PC W/ TR BLK HERRID, No ODR, No FLD.

LM-CRM → TN, FX, FEW FOS, MOSTLY DSE, FX AMT SOFT CHK

SH-GRN → GY → BLK.

LM-WY → CRM, FX, FIDELY DOLIT, MOSTLY DSE, FR AMT SOFT CHK SCATT PR VGB, FINE-DOLIT, 2 PC W/ BWN STR, 1 PC W/ TINY BODS BWN DOL, No ODR.

LM-AA. N.S.

LM-CRM → TN, FX, DSE, FR AMT SOFT CHK, SOME DOLIT LIT, SHY-MAR → GRN → GY.

LM-TN → GY, FX, FOS, INT, DSE, SH-DK GRN → GR → BLK.

SH-DK GRN → DK GY → BLK.

SH-GRN → GY → DK GY.

LM-TU, FX, SOME SPARRY CAL, DSE, SH-AA.

LM-TU → GY, FX, FEW FOS, MOSTLY DSE, SCATT PR PIM PL, 3 PC W/ BLK RESID STR, TR FOS, No ODR, No FLD, (BEANIES)

LM-AA. 1 PC W/ SPARRY DOLIT, STR. V.S.

SH-DK GY → BLK, SOME GY CLAYS.

SH-BLK, CARB, SOFT.

LM-TU → GY, FX, FOS, FEW ODR, MOSTLY DSE, SCATT PR PIM PL, VGB, FEW FOS, MED, ST, BWN FOS, SPATT BWN STR, No ODR.

LM-CRM → TN → GY, FX, FEW FOS, SCATT PR PIM PL, 2-3 PC W/ BWN STR, TR FOS, No ODR, No FLD.

LM-AA. 1 PC W/ STR. HEAVY PIM.

SH-GRN → GY → BLK, CARB W/ PT.

LM-CRM → TN → GY, FX, MOST DSE, CHRY-MAR W/ PT. N.S.

LM-TU → GY, TN → GY, FX, FEW FOS, MOSTLY DSE, SCATT PR PIM PL, 1 PC W/ TR. SHY → GRN → GY → BLK. N.S.

LM-AA. TR GY → TN → CHY SHY.

LM-TU → GY → TN, FX, FEW FOS, DSE, CHRY-MAR, MED, SCATT VGB, W/ 2nd CAL, 2 PC W/ 50% DK STR, No ODR.

LM-CRM → TN, FX.

LM-CRM → TN, FX, FEW FOS, FEW SCATT VGB, CHRY-MAR, 1 PC W/ STR. SH-GRN → GY → BLK.

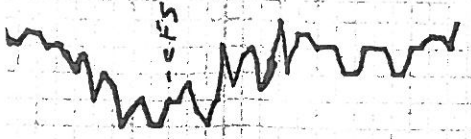
SH-MAR → GRN → GY → BLK, SMALL AMT CHY → YEL → DRANGE, FRESH, SHY. N.S. TR GRN SD-VGB, SHY. N.S.

SH-RD → YEL → GRN → GY → BLK, WEATH. CHY → YEL → YEL → DR, FRESH, SHY, CLR SD GRVS IN SOME N.S. TR SD - CLR, WELL-DEM, SHAL, PR.

LM-AA. SOME CRM → TN, FOS, DOLIT IN PT, FRESH. N.S.

LM-CRM → TN → YEL → TN, F → M, FOS, DOLIT IN PT, DSE, CHRY IN PT. N.S.

LM-CRM → TN, M, FOS, DOLIT, CHRY IN PT, PR IN INT-DOL, OR INT-PART, CRUMBLY N.S. CH-GRN → GY → BLK. DOL → GRN → GY, FX, SOFT, N.S.



LM - CRM → TN → VILL. TO, F, MX, POST, POLICE, RT, D&F, CHRY IN PT, AS.

LM - CRM → TN, MX, FOST, OOLIT, CHRY IN PT, P, PR, INT-D&F, OR, INT, PARTS, CRUMBLY, AS, CHY - ORG, TRUCK, F, SUCR, SOFT, AS.

LM - CRM → TN, F, MX, FOST, OOLIT, IN PT, DOLM IN PT, F&R, USG, INT, X&B, CHRY IN PT, SMALL AMT DOL - TN, RT, GY, Fx, SUCR, SOFT, AS.

LM - CRM → TN, MX, FOST, OOLIT, IN PT, MOSTLY D&F, CHRY IN PT, DOLM IN PT, AS, S&H - CRN - R&K GY.

LM - CRM → TN, MX, FOST, OOLIT, IN PT, SCATT PR, INT - X&B, INT - OOLIT, F, SOME G&K, AS, SMALL AMT, DOL - TN, Fx, SUCR, AS - AA.

RTD 4585T - 1977  
 FLog 4586 (1978)

COMPANY Trans Pacific Oil Corp.

LEASE Hanks 'B' #1-14

LOCATION 1815 Fsh, 825 FEL RD, 14 17s 27w

COUNTY Lane STATE Kansas

ELEVATION K.B. 2608