



TRILOBITE TESTING, INC.

DRILL STEM TEST REPORT

Cholla Production
 7851 S. ELATI St. Ste 201 Littleton Co 80120
 ATTN: Cholla Production,L

12 2s 30w Decatur Ks.
Kyte #1-12
 Job Ticket: 46189 **DST#: 1**
 Test Start: 2012.09.07 @ 06:00:00

GENERAL INFORMATION:

Formation: **LKC-A**
 Deviated: No Whipstock: ft (KB)
 Time Tool Opened: 07:57:00
 Time Test Ended: 13:12:00
 Interval: **3720.00 ft (KB) To 3785.00 ft (KB) (TVD)**
 Total Depth: 3785.00 ft (KB) (TVD)
 Hole Diameter: 7.80 inches Hole Condition: Good
 Test Type: Conventional Straddle (Initial)
 Tester: Chuck Kreuzer Jr.
 Unit No: 61
 Reference Elevations: 2783.00 ft (KB)
 2778.00 ft (CF)
 KB to GR/CF: 5.00 ft

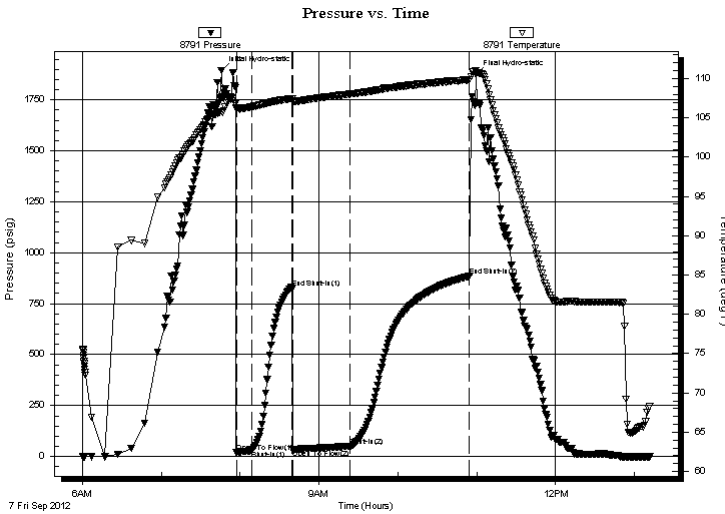
Serial #: 8791

Inside

Press @ Run Depth: 50.22 psig @ 3722.00 ft (KB) Capacity: 8000.00 psig
 Start Date: 2012.09.07 End Date: 2012.09.07 Last Calib.: 2012.09.07
 Start Time: 06:00:05 End Time: 13:11:59 Time On Btm: 2012.09.07 @ 07:45:30
 Time Off Btm: 2012.09.07 @ 10:59:30

TEST COMMENT: IF: Weak blow , Built to surface over 10 mins.
 IS: No blow back over 30 mins.
 FF: Weak blow , Built to 3 in. over 45 mins.
 FS: No blow back over 90 mins.

PRESSURE SUMMARY



Time (Min.)	Pressure (psig)	Temp (deg F)	Annotation
0	1894.32	105.80	Initial Hydro-static
12	18.73	106.30	Open To Flow (1)
23	28.66	106.42	Shut-In(1)
54	824.49	107.44	End Shut-In(1)
55	34.78	107.19	Open To Flow (2)
98	50.22	108.03	Shut-In(2)
189	885.20	109.91	End Shut-In(2)
194	1875.11	111.05	Final Hydro-static

Recovery

Length (ft)	Description	Volume (bbl)
64.00	OCM-25%o75%m	0.90
0.00	Sampler- 45 psi. 2000 ml. oil	0.00

Gas Rates

Choke (inches)	Pressure (psig)	Gas Rate (Mcf/d)



**TRILOBITE
TESTING, INC.**

DRILL STEM TEST REPORT

FLUID SUMMARY

Cholla Production

12 2s 30w Decatur Ks.

7851 S. ELATI St. Ste 201 Littleton Co 80120

Kyte #1-12

Job Ticket: 46189

DST#: 1

ATTN: Cholla Production,L

Test Start: 2012.09.07 @ 06:00:00

Mud and Cushion Information

Mud Type: Gel Chem

Cushion Type:

Oil API:

deg API

Mud Weight: 9.00 lb/gal

Cushion Length:

ft

Water Salinity:

ppm

Viscosity: 54.00 sec/qt

Cushion Volume:

bbbl

Water Loss: 5.80 in³

Gas Cushion Type:

Resistivity: ohm.m

Gas Cushion Pressure:

psig

Salinity: 500.00 ppm

Filter Cake: 2.00 inches

Recovery Information

Recovery Table

Length ft	Description	Volume bbl
64.00	OCM-25%o75%m	0.898
0.00	Sampler- 45 psi. 2000 ml. oil	0.000

Total Length: 64.00 ft Total Volume: 0.898 bbl

Num Fluid Samples: 0

Num Gas Bombs: 0

Serial #:

Laboratory Name:

Laboratory Location:

Recovery Comments:

Serial #: 8791

Inside

Cholla Production

Kyle #1-12

DST Test Number: 1

Pressure vs. Time

