



**TRILOBITE TESTING, INC.**

# DRILL STEM TEST REPORT

Cholla Production  
 7851 S. ELATI St. Ste 201 Littleton Co 80120  
 ATTN: Cholla Production,L

**12 2s 30w Decatur Ks.**  
**Kyte #1-12**  
 Job Ticket: 46191 **DST#: 3**  
 Test Start: 2012.09.08 @ 18:23:00

## GENERAL INFORMATION:

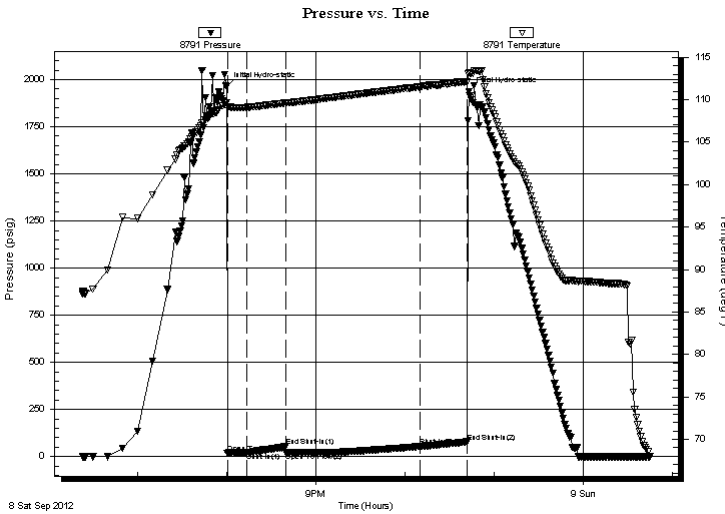
Formation: **Lansing KC J Zone**  
 Deviated: No Whipstock: ft (KB)  
 Time Tool Opened: 20:00:30  
 Time Test Ended: 00:45:00  
 Interval: **3899.00 ft (KB) To 3944.00 ft (KB) (TVD)**  
 Total Depth: 3944.00 ft (KB) (TVD)  
 Hole Diameter: 7.80 inches Hole Condition: Fair  
 Test Type: Conventional Bottom Hole (Reset)  
 Tester: Troy Leiker  
 Unit No: 61  
 Reference Elevations: 2783.00 ft (KB)  
 2778.00 ft (CF)  
 KB to GR/CF: 5.00 ft

## Serial #: 8791

Press @ Run Depth: 53.87 psig @ ft (KB) Capacity: 8000.00 psig  
 Start Date: 2012.09.08 End Date: 2012.09.09 Last Calib.: 1899.12.30  
 Start Time: 18:23:05 End Time: 00:44:59 Time On Btm: 2012.09.08 @ 20:00:00  
 Time Off Btm: 2012.09.08 @ 22:43:00

TEST COMMENT: IF10 Very Weak Blow , Died in 5 min.  
 IS 30 No Blow Back  
 FF 30 Very Weak Blow , Died in 30sec.  
 FS 90 No Blow Back

## PRESSURE SUMMARY



Time (Min.)	Pressure (psig)	Temp (deg F)	Annotation
0	1962.47	109.70	Initial Hydro-static
1	18.97	109.05	Open To Flow (1)
14	21.62	109.10	Shut-In(1)
40	52.82	109.61	End Shut-In(1)
40	20.26	109.61	Open To Flow (2)
130	53.87	111.49	Shut-In(2)
162	77.83	112.07	End Shut-In(2)
163	1935.28	113.16	Final Hydro-static

## Recovery

Length (ft)	Description	Volume (bbl)
3.00	Mud 100% m	0.04
0.00	Sampler 46psi 2,000ml mud	0.00

\* Recovery from multiple tests

## Gas Rates

Choke (inches)	Pressure (psig)	Gas Rate (Mcf/d)



**TRILOBITE  
TESTING, INC.**

# DRILL STEM TEST REPORT

**FLUID SUMMARY**

Cholla Production

**12 2s 30w Decatur Ks.**

7851 S. ELATI St. Ste 201 Littleton Co 80120

**Kyte #1-12**

Job Ticket: 46191

**DST#: 3**

ATTN: Cholla Production,L

Test Start: 2012.09.08 @ 18:23:00

## Mud and Cushion Information

Mud Type: Gel Chem

Cushion Type:

Oil API:

deg API

Mud Weight: 9.00 lb/gal

Cushion Length:

ft

Water Salinity:

ppm

Viscosity: 57.00 sec/qt

Cushion Volume:

bbbl

Water Loss: 6.40 in<sup>3</sup>

Gas Cushion Type:

Resistivity: ohm.m

Gas Cushion Pressure:

psig

Salinity: 1200.00 ppm

Filter Cake: 2.00 inches

## Recovery Information

Recovery Table

Length ft	Description	Volume bbl
3.00	Mud 100%m	0.042
0.00	Sampler 46psi 2,000ml mud	0.000

Total Length: 3.00 ft      Total Volume: 0.042 bbl

Num Fluid Samples: 0

Num Gas Bombs: 0

Serial #:

Laboratory Name:

Laboratory Location:

Recovery Comments:

