

GEOLOGICAL REPORT

DRILLING TIME & SAMPLE DESCRIPTION

REPORT PREPARED BY: **DOUGLAS V. DAVIS JR.**

OPERATOR **OIL PRODUCERS INC. OF KS.**

LEASE **#1-20 LOWRY**

FIELD **Wildcat** API # **15-163-24058-0000**

SEC. **20** TWPNSP. **8 S.** RANGE **19 W.**

COUNTY **ROOKS** STATE **KANSAS**

CONTRACTOR **Souhwind Drilling Inc. Rig #2**

SPUD **08/31/2012** COMP. **09/08/2012**

LTD **3522'** RTD **3520'** MUD UP **3000'**

SAMPLE SAVED FROM **3000'** TO **RTD**

DRILLING TIME FROM **2900'** TO **RTD**

FORMATION **Stone Coral Anh.** SAMPLE **1459** E-LOG **1459** DATUM **+544** A **0** B **-1** C

FORMATION	SAMPLE	E-LOG	DATUM	A	B	C
Heebner Sh.	3167	3169	-1159	-9	-8	
Toronto Ls.	3189	3189	-1181	-10	-9	
Lansing	3203	3205	-1197	-7	-7	
Lansing "C"	3240	3244	-1232	-6	-6	
Lansing-KC "D"	3261	3262	-1253	-7	-7	
Lansing-KC "J"	3377	3377	-1399	-6	-8	
Base Kansas City	3443	3446	-1450	-1	-8	
Marm.	3456	3454	-1448	-9	-9	
Arbuckle	3463	3464	-1456	-10	-16	

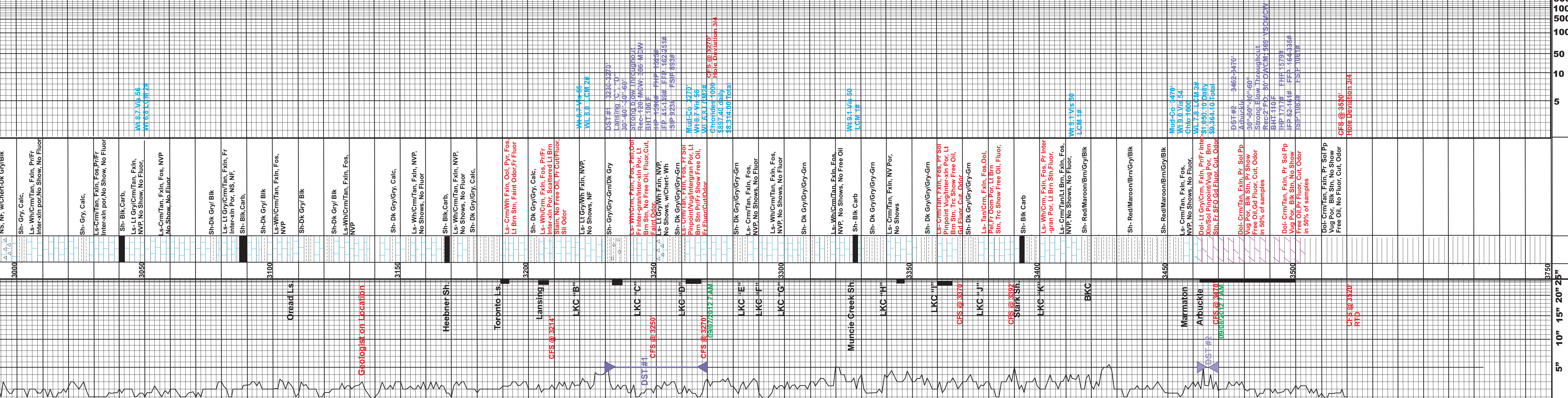
REFERENCE WELLS
 A. Kaiser-Francis #1Bray SE-SW-SW 20-8S-19W
 B. Eagle Petroleum #1Lowry NE-SW-SW 20-8S-19W

REMARKS **It was recommended that this test be plugged and abandoned.**

DST
 DST #1 3230-3270" Lansing "C", "D" 30"-60"-30"-60" Strong Blow Throughout Rec-120' MCW; 386' MCW BHT 106 F FHP 1596# FFP 162-251# IEP 41-148# FSP 893#
 DST #2 3462-3470" Arbuckle 30"-60"-30"-60" Strong Blow Throughout Rec-2' FO; 80' OWCW; 569' VSOMCW BHT 110 F FHP 1579# FFP 164-335# IEP 52-161# FSP 1063#

LEGEND

- LIMESTONE
- SANDSTONE
- DOLOMITE
- SHALE
- BLK SHALE
- CHERT
- ANH/GYPSUM



DRILLING TIME IN MINUTES PER FOOT	LITHOLOGY	SAMPLE DESCRIPTION	HOT WIRE
5" 10" 15" 20"	Stone Coral Anhydrite		
	Base Stone Coral Anh.		
	Muncie Creek Sh.		
	Heebner Sh.		
	Toronto Ls.		
	Lansing		
	LKC "B"		
	LKC "C"		
	LKC "D"		
	LKC "E"		
	LKC "F"		
	LKC "G"		
	Marmaton		
	Arbuckle		
5" 10" 15" 20" 25"			

CONTRACTOR **W W Drilling Rig #4** LOCATION **1725' FSL, 1750' FEL**
 LEASE **Vehicle #1-36** SEC. **36** TWPNSP. **6S** RANGE **20W**
 ELEVATION **2120'** RTD **3670'** LTD **3668'** COUNTY **Rooks** STATE **Kansas**