



**TRILOBITE TESTING, INC.**

# DRILL STEM TEST REPORT

Cholla Production, LLC

**32 19s 33w Scott, Ks**

7851 S Elati St. STE 201  
Littleton, Co 80120

**Bontrager RT 1-32**

ATTN: Bill Goff

Job Ticket: 042338

**DST#: 5**

Test Start: 2012.11.24 @ 15:32:00

## GENERAL INFORMATION:

Formation: **Morrow**

Deviated: No Whipstock: ft (KB)

Time Tool Opened: 17:44:45

Time Test Ended: 23:07:00

Test Type: Conventional Bottom Hole (Reset)

Tester: Bradley Walter

Unit No: 53

**Interval: 4610.00 ft (KB) To 4675.00 ft (KB) (TVD)**

Reference Elevations: 2991.00 ft (KB)

Total Depth: 4675.00 ft (KB) (TVD)

2986.00 ft (CF)

Hole Diameter: 7.88 inches Hole Condition: Good

KB to GR/CF: 5.00 ft

**Serial #: 8522 Outside**

Press @ Run Depth: 100.72 psig @ 4611.00 ft (KB)

Capacity: 8000.00 psig

Start Date: 2012.11.24

End Date:

2012.11.24

Last Calib.: 2012.11.24

Start Time: 15:32:05

End Time:

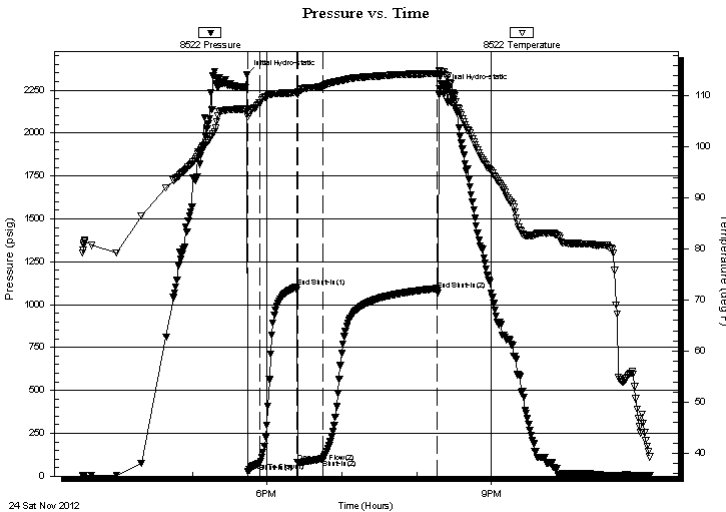
23:06:59

Time On Btm: 2012.11.24 @ 17:43:45

Time Off Btm: 2012.11.24 @ 20:18:15

**TEST COMMENT:** IF: 6 1/2" blow .  
IS: No return.  
FF: BOB @ 4 min.  
FS: Surface return blow .

## PRESSURE SUMMARY



Time (Min.)	Pressure (psig)	Temp (deg F)	Annotation
0	2337.95	107.28	Initial Hydro-static
1	27.27	105.90	Open To Flow (1)
11	74.37	108.64	Shut-In(1)
40	1103.02	110.61	End Shut-In(1)
41	80.01	110.29	Open To Flow (2)
61	100.72	111.94	Shut-In(2)
153	1085.94	114.37	End Shut-In(2)
155	2257.38	114.83	Final Hydro-static

## Recovery

Length (ft)	Description	Volume (bbl)
200.00	gocm 30g 40m 30o	1.68
0.00	290' GIP	0.00

\* Recovery from multiple tests

## Gas Rates

Choke (inches)	Pressure (psig)	Gas Rate (Mcf/d)



**TRILOBITE  
TESTING, INC.**

# DRILL STEM TEST REPORT

**FLUID SUMMARY**

Cholla Production, LLC

**32 19s 33w Scott, Ks**

7851 S Elati St. STE 201  
Littleton, Co 80120

**Bontrager RT 1-32**

Job Ticket: 042338

**DST#: 5**

ATTN: Bill Goff

Test Start: 2012.11.24 @ 15:32:00

## Mud and Cushion Information

Mud Type: Gel Chem

Cushion Type:

Oil API:

0 deg API

Mud Weight: 9.00 lb/gal

Cushion Length:

ft

Water Salinity:

0 ppm

Viscosity: 55.00 sec/qt

Cushion Volume:

bbbl

Water Loss: 7.95 in<sup>3</sup>

Gas Cushion Type:

Resistivity: ohm.m

Gas Cushion Pressure:

psig

Salinity: 3400.00 ppm

Filter Cake: 1.00 inches

## Recovery Information

Recovery Table

Length ft	Description	Volume bbl
200.00	gocm 30g 40m 30o	1.676
0.00	290' GIP	0.000

Total Length: 200.00 ft      Total Volume: 1.676 bbl

Num Fluid Samples: 0

Num Gas Bombs: 0

Serial #:

Laboratory Name:

Laboratory Location:

Recovery Comments: Sampler - 725 psi - 4 Cubic Ft Gas - 400ml Mud - 1600ml Oil

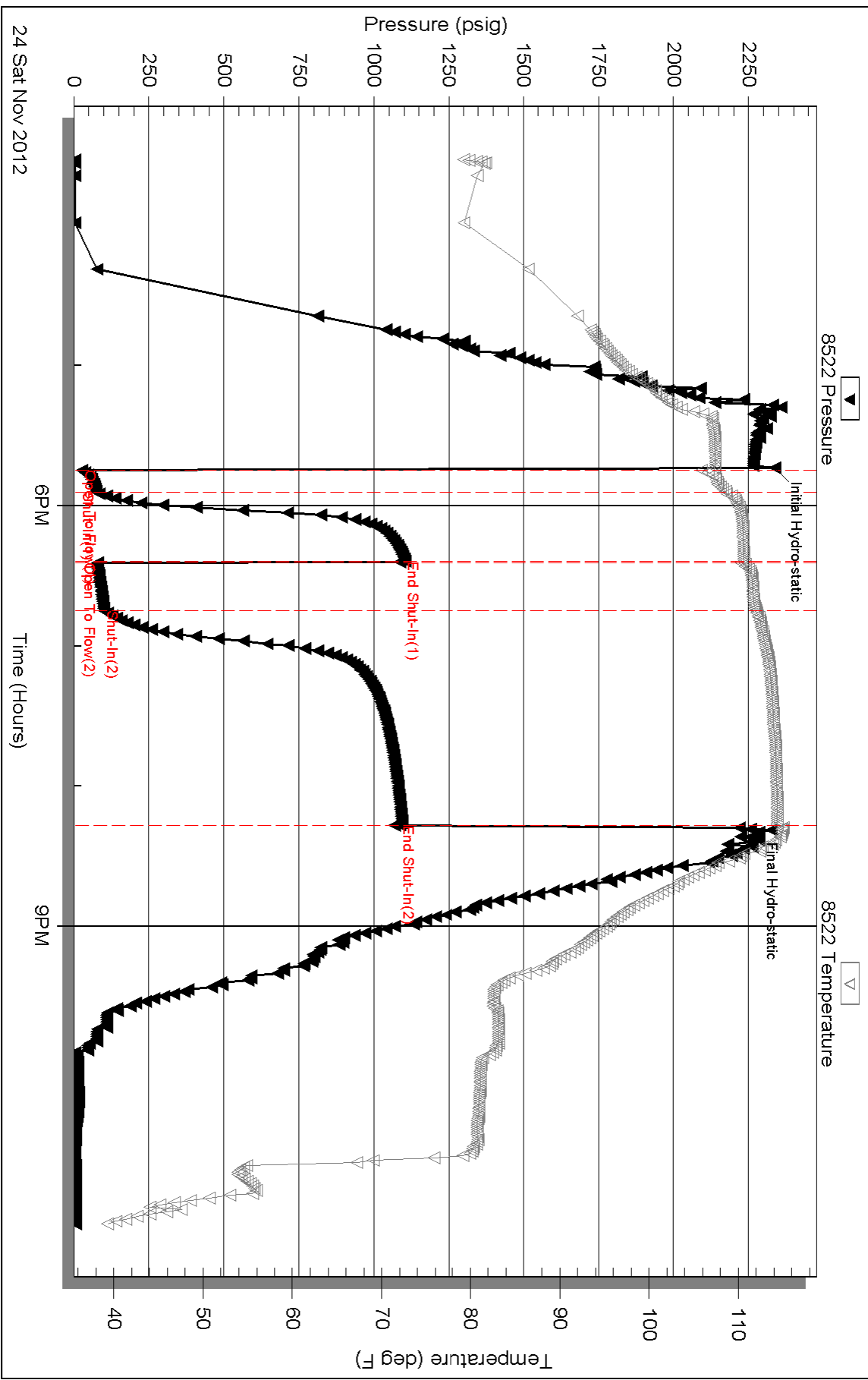
Serial #: 8522

Outside Cholla Production, LLC

Bortrager RT-1-32

DST Test Number: 5

# Pressure vs. Time



Triobite Testing, Inc

Ref. No: 042338

Printed: 2012.11.25 @ 06:55:48