



TEMPORARY ABANDONMENT WELL APPLICATION

OPERATOR: License# _____
 Name: _____
 Address 1: _____
 Address 2: _____
 City: _____ State: _____ Zip: _____ + _____
 Contact Person: _____
 Phone: (_____) _____
 Contact Person Email: _____
 Field Contact Person: _____
 Field Contact Person Phone: (_____) _____

API No. 15- _____
 Spot Description: _____
 _____ - _____ - _____ - _____ Sec. _____ Twp. _____ S. R. _____ E W
 _____ feet from N / S Line of Section
 _____ feet from E / W Line of Section
 GPS Location: Lat: _____, Long: _____
(e.g. xx.xxxxx) (e.g. -xxx.xxxxx)
 Datum: NAD27 NAD83 WGS84
 County: _____ Elevation: _____ GL KB
 Lease Name: _____ Well #: _____
 Well Type: (check one) Oil Gas OG WSW Other: _____
 SWD Permit #: _____ ENHR Permit #: _____
 Gas Storage Permit #: _____
 Spud Date: _____ Date Shut-In: _____

	Conductor	Surface	Production	Intermediate	Liner	Tubing
Size						
Setting Depth						
Amount of Cement						
Top of Cement						
Bottom of Cement						

Casing Fluid Level from Surface: _____ How Determined? _____ Date: _____

Casing Squeeze(s): _____ to _____ w / _____ sacks of cement, _____ to _____ w / _____ sacks of cement. Date: _____
(top) (bottom) (top) (bottom)

Do you have a valid Oil & Gas Lease? Yes No

Depth and Type: Junk in Hole at _____ Tools in Hole at _____ Casing Leaks: Yes No Depth of casing leak(s): _____
(depth) (depth)

Type Completion: ALT. I ALT. II Depth of: DV Tool: _____ w / _____ sacks of cement Port Collar: _____ w / _____ sack of cement
(depth) (depth)

Packer Type: _____ Size: _____ Inch Set at: _____ Feet

Total Depth: _____ Plug Back Depth: _____ Plug Back Method: _____

Geological Data:

Formation Name	Formation Top	Formation Base	Completion Information
1. _____	At: _____	to _____ Feet	Perforation Interval _____ to _____ Feet or Open Hole Interval _____ to _____ Feet
2. _____	At: _____	to _____ Feet	Perforation Interval _____ to _____ Feet or Open Hole Interval _____ to _____ Feet

UNDER PENALTY OF PERJURY I HEREBY ATTEST THAT THE INFORMATION CONTAINED HEREIN IS TRUE AND CORRECT TO THE BEST OF MY KNOWLEDGE

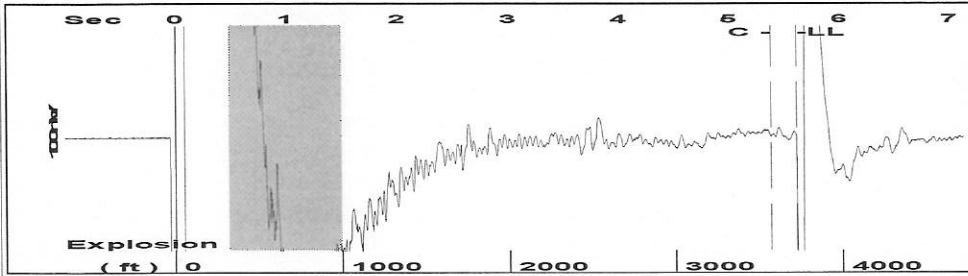
Submitted Electronically

Do NOT Write in This Space - KCC USE ONLY	Date Tested: _____	Results: _____	Date Plugged: _____	Date Repaired: _____	Date Put Back in Service: _____
	Review Completed by: _____ Comments: _____				
TA Approved: <input type="checkbox"/> Yes <input type="checkbox"/> Denied Date: _____					

Mail to the Appropriate KCC Conservation Office:

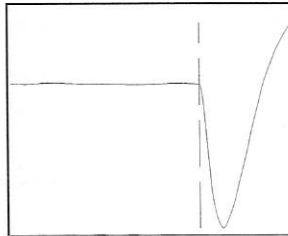
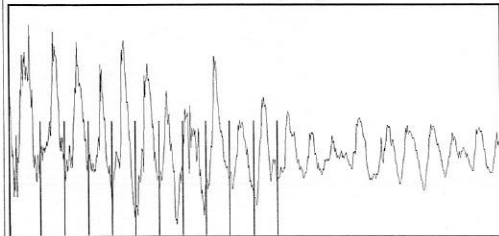
	KCC District Office #1 - 210 E. Frontview, Suite A, Dodge City, KS 67801	Phone 620.225.8888
	KCC District Office #2 / UPGS - 3450 N. Rock Road, Building 600, Suite 601, Wichita, KS 67226	Phone 316.630.4000
	KCC District Office #3 - 1500 SW Seventh Steet, Chanute, KS 66720	Phone 620.432.2300
	KCC District Office #4 - 2301 E. 13th Street, Hays, KS 67601-2651	Phone 785.625.0550

Group: Pratt Well Service, Inc Well: Long (acquired on: 12/27/12 14:28:23)



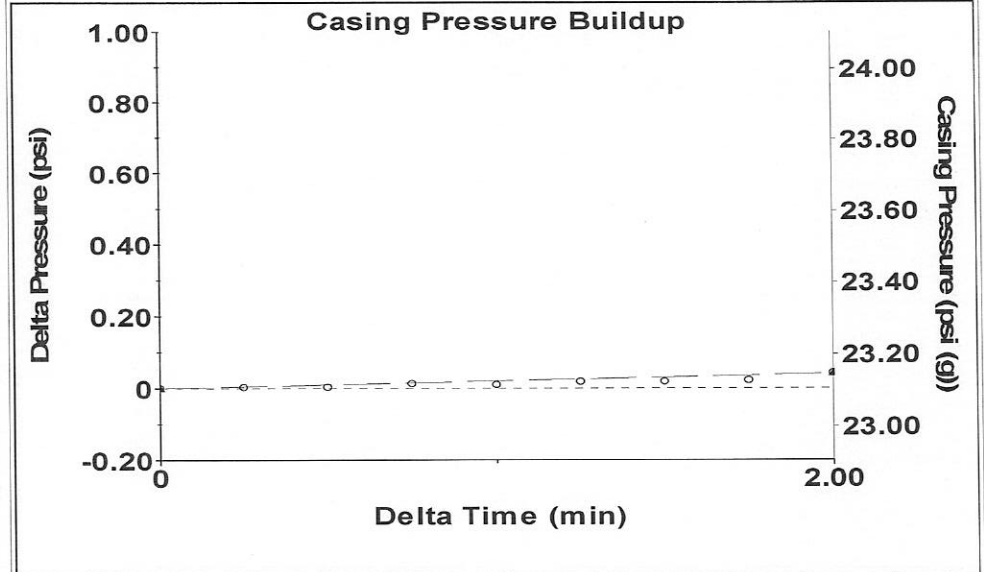
Filter Type High Pass Automatic Collar Count Yes Time 5.611 sec
 Manual Acoustic Velo 1307.22 ft/s Manual JTS/sec 20.6186 Joints 117.537 Jts
 Depth 3725.91 ft

[0.5 to 1.5 (Sec)]



Analysis Method: Automatic

Group: Pratt Well Service, Inc Well: Long (acquired on: 12/27/12 14:28:23)



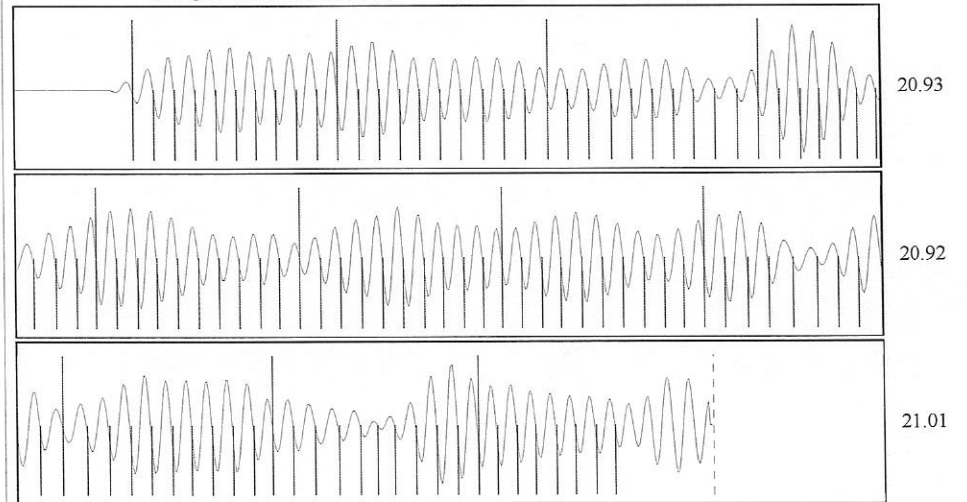
Change in Pressure 0.04 psi PT 9768
 Change in Time 2.00 min Range 0 - ? psi

Group: Pratt Well Service, Inc Well: Long (acquired on: 12/27/12 14:28:23)

Production					
Current	Potential	Casing Pressure		Producing	
Oil - * -	- * - BBL/D	23.1 psi (g)			
Water - * -	- * - BBL/D	Casing Pressure Buildup		Casing	
Gas - * -	- * - Mscf/D	0.042 psi		% Liquid	98 %
		2.00 min			
IPR Method	Vogel	Gas/Liquid Interface Pressure			
PBHP/SBHP	- * -	26.4 psi (g)			
Production Efficiency	0.0				
Oil 40 deg.API		Liquid Level Depth			
Water 1.05 Sp.Gr.H2O		3725.91 ft			
Gas 0.68 Sp.Gr.AIR		Tubing Intake Depth			
		4650.00 ft			
Acoustic Velocity	1328.07 ft/s	Formation Depth			
		4650.00 ft			
Formation Submergence					
Total Gaseous Liquid Column HT (TVD)	924 ft				
Equivalent Gas Free Liquid HT (TVD)	909 ft				
Acoustic Test					



Group: Pratt Well Service, Inc Well: Long (acquired on: 12/27/12 14:28:23)



Acoustic Velocity 1328.07 ft/s Joints counted 107
 Joints Per Second 20.9475 jts/sec Joints to liquid level 117.537
 Depth to liquid level 3725.91 ft Filter Width 18.6186 22.6186
 Automatic Collar Count Yes Time to 1st Collar 0.272 5.38