



**TEMPORARY ABANDONMENT WELL APPLICATION**

All blanks must be complete

OPERATOR: License# \_\_\_\_\_  
Name: \_\_\_\_\_  
Address 1: \_\_\_\_\_  
Address 2: \_\_\_\_\_  
City: \_\_\_\_\_ State: \_\_\_\_\_ Zip: \_\_\_\_\_ + \_\_\_\_\_  
Contact Person: \_\_\_\_\_  
Phone: ( \_\_\_\_\_ ) \_\_\_\_\_  
Contact Person Email: \_\_\_\_\_  
Field Contact Person: \_\_\_\_\_  
Field Contact Person Phone: ( \_\_\_\_\_ ) \_\_\_\_\_

API No. 15- \_\_\_\_\_  
Spot Description: \_\_\_\_\_  
\_\_\_\_ - \_\_\_\_ - \_\_\_\_ - \_\_\_\_ Sec. \_\_\_\_\_ Twp. \_\_\_\_\_ S. R. \_\_\_\_\_  E  W  
\_\_\_\_\_ feet from  N /  S Line of Section  
\_\_\_\_\_ feet from  E /  W Line of Section  
GPS Location: Lat: \_\_\_\_\_, Long: \_\_\_\_\_  
(e.g. xx.xxxxx) (e.g. -xxx.xxxxx)  
Datum:  NAD27  NAD83  WGS84  
County: \_\_\_\_\_ Elevation: \_\_\_\_\_  GL  KB  
Lease Name: \_\_\_\_\_ Well #: \_\_\_\_\_  
Well Type: (check one)  Oil  Gas  OG  WSW  Other: \_\_\_\_\_  
 SWD Permit #: \_\_\_\_\_  ENHR Permit #: \_\_\_\_\_  
 Gas Storage Permit #: \_\_\_\_\_  
Spud Date: \_\_\_\_\_ Date Shut-In: \_\_\_\_\_

	Conductor	Surface	Production	Intermediate	Liner	Tubing
Size						
Setting Depth						
Amount of Cement						
Top of Cement						
Bottom of Cement						

Casing Fluid Level from Surface: \_\_\_\_\_ How Determined? \_\_\_\_\_ Date: \_\_\_\_\_  
Casing Squeeze(s): \_\_\_\_\_ to \_\_\_\_\_ w / \_\_\_\_\_ sacks of cement, \_\_\_\_\_ to \_\_\_\_\_ w / \_\_\_\_\_ sacks of cement. Date: \_\_\_\_\_  
(top) (bottom) (top) (bottom)  
Do you have a valid Oil & Gas Lease?  Yes  No  
Depth and Type:  Junk in Hole at \_\_\_\_\_  Tools in Hole at \_\_\_\_\_ Casing Leaks:  Yes  No Depth of casing leak(s): \_\_\_\_\_  
(depth) (depth)  
Type Completion:  ALT. I  ALT. II Depth of:  DV Tool: \_\_\_\_\_ w / \_\_\_\_\_ sacks of cement  Port Collar: \_\_\_\_\_ w / \_\_\_\_\_ sack of cement  
(depth) (depth)  
Packer Type: \_\_\_\_\_ Size: \_\_\_\_\_ Inch Set at: \_\_\_\_\_ Feet  
Total Depth: \_\_\_\_\_ Plug Back Depth: \_\_\_\_\_ Plug Back Method: \_\_\_\_\_

**Geological Data:**

Formation Name	Formation Top	Formation Base	Completion Information
1. _____	At: _____	to _____ Feet	Perforation Interval _____ to _____ Feet or Open Hole Interval _____ to _____ Feet
2. _____	At: _____	to _____ Feet	Perforation Interval _____ to _____ Feet or Open Hole Interval _____ to _____ Feet

UNDER PENALTY OF PERJURY I HEREBY ATTEST THAT THE INFORMATION CONTAINED HEREIN IS TRUE AND CORRECT TO THE BEST OF MY KNOWLEDGE

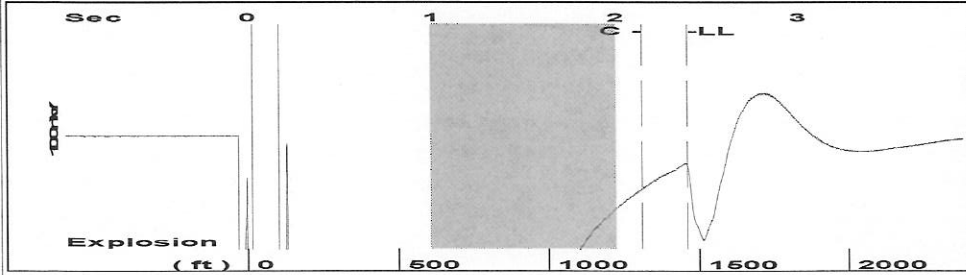
Submitted Electronically

<b>Do NOT Write in This Space - KCC USE ONLY</b>	Date Tested: _____	Results: _____	Date Plugged: _____	Date Repaired: _____	Date Put Back in Service: _____
	Review Completed by: _____ Comments: _____				
TA Approved: <input type="checkbox"/> Yes <input type="checkbox"/> Denied Date: _____					

**Mail to the Appropriate KCC Conservation Office:**

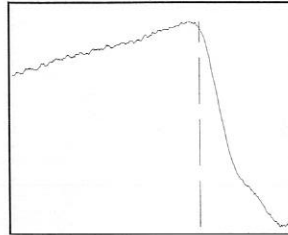
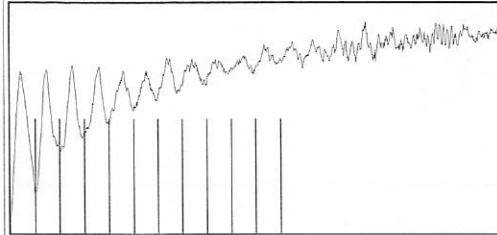
	KCC District Office #1 - 210 E. Frontview, Suite A, Dodge City, KS 67801	Phone 620.225.8888
	KCC District Office #2 / UPGS - 3450 N. Rock Road, Building 600, Suite 601, Wichita, KS 67226	Phone 316.630.4000
	KCC District Office #3 - 1500 SW Seventh Steet, Chanute, KS 66720	Phone 620.432.2300
	KCC District Office #4 - 2301 E. 13th Street, Hays, KS 67601-2651	Phone 785.625.0550

Group: Pratt Well Service, Inc Well: Henning #2 (acquired on: 12/27/12 15:41:55 )



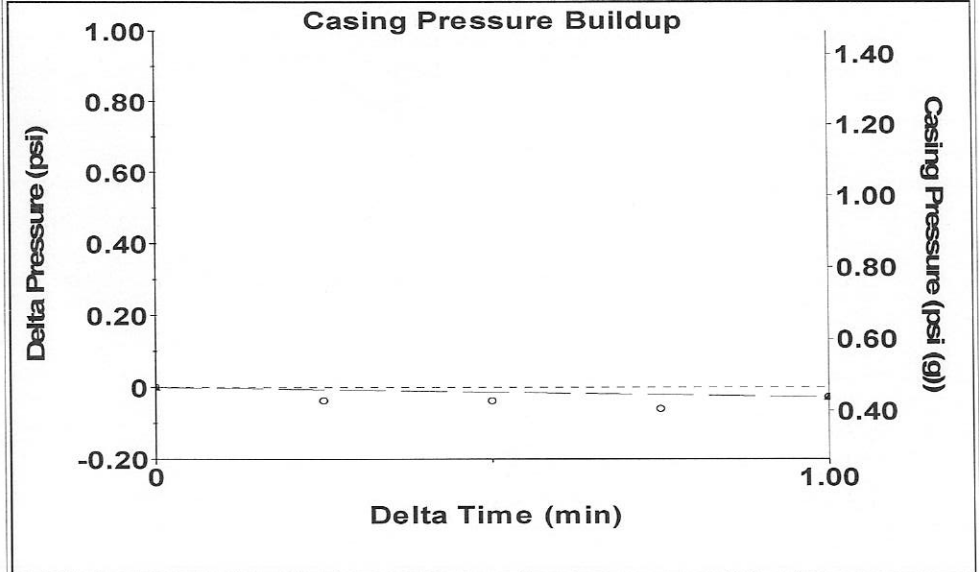
Filter Type High Pass Automatic Collar Count Yes Time 2.391 sec  
 Manual Acoustic Velo 1255.45 ft/s Manual JTS/sec 19.802 Joints 46.0792 Jts  
 Depth 1460.71 ft

[ 1.0 to 2.0 (Sec) ]



Analysis Method: Automatic

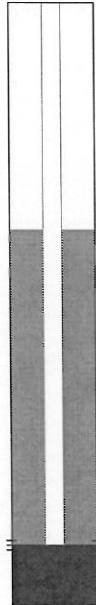
Group: Pratt Well Service, Inc Well: Henning #2 (acquired on: 12/27/12 15:41:55 )



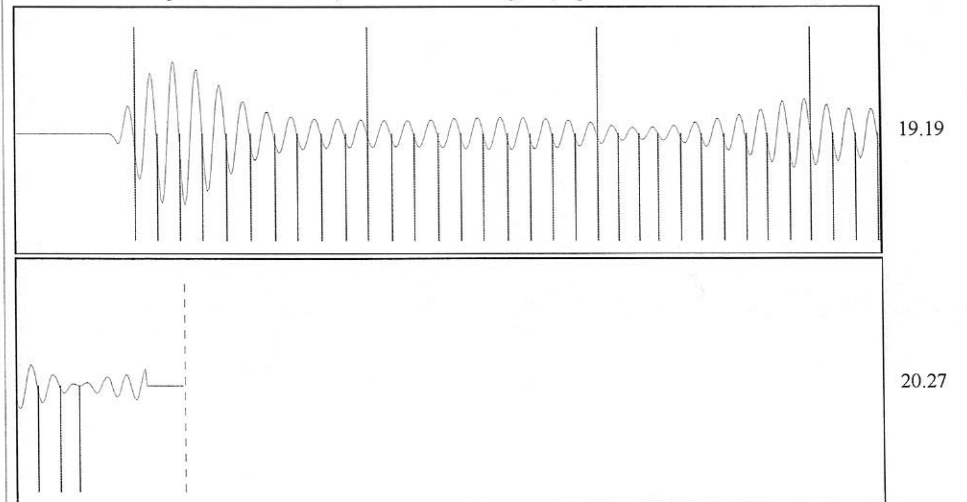
Change in Pressure -0.03 psi PT 9768  
 Change in Time 1.00 min Range 0 - ? psi

Group: Pratt Well Service, Inc Well: Henning #2 (acquired on: 12/27/12 15:41:55 )

<b>Production</b>					
Current	Potential	Casing Pressure	Producing		
Oil - * -	- * - BBL/D	0.5 psi (g)			
Water - * -	- * - BBL/D	Casing Pressure Buildup	Casing		
Gas - * -	- * - Mscf/D	-0.028 psi	% Liquid		
		1.00 min	100 %		
IPR Method	Vogel	Gas/Liquid Interface Pressure			
PBHP/SBHP	- * -	1.1 psi (g)			
Production Efficiency	0.0				
Oil 40 deg.API		Liquid Level Depth			
Water 1.05 Sp.Gr.H2O		1460.71 ft			
Gas 0.76 Sp.Gr.AIR		Tubing Intake Depth			
		4231.00 ft			
Acoustic Velocity	1221.84 ft/s	Formation Depth			
		4232.00 ft			
Formation Submergence					
Total Gaseous Liquid Column HT (TVD)	2770 ft				
Equivalent Gas Free Liquid HT (TVD)	2770 ft				
Acoustic Test					



Group: Pratt Well Service, Inc Well: Henning #2 (acquired on: 12/27/12 15:41:55 )



Acoustic Velocity 1221.84 ft/s Joints counted 36  
 Joints Per Second 19.2719 jts/sec Joints to liquid level 46.0792  
 Depth to liquid level 1460.71 ft Filter Width 17.802 21.802  
 Automatic Collar Count Yes Time to 1st Collar 0.276 2.144