



WELL COMPLETION FORM
WELL HISTORY - DESCRIPTION OF WELL & LEASE

OPERATOR: License # _____

Name: _____

Address 1: _____

Address 2: _____

City: _____ State: _____ Zip: _____ + _____

Contact Person: _____

Phone: (_____) _____

CONTRACTOR: License # _____

Name: _____

Wellsite Geologist: _____

Purchaser: _____

Designate Type of Completion:

- New Well Re-Entry Workover
- Oil WSW SWD SIOW
- Gas D&A ENHR SIGW
- OG GSW Temp. Abd.
- CM (Coal Bed Methane)
- Cathodic Other (Core, Expl., etc.): _____

If Workover/Re-entry: Old Well Info as follows:

Operator: _____

Well Name: _____

Original Comp. Date: _____ Original Total Depth: _____

- Deepening Re-perf. Conv. to ENHR Conv. to SWD
- Conv. to GSW
- Plug Back: _____ Plug Back Total Depth _____
- Commingled Permit #: _____
- Dual Completion Permit #: _____
- SWD Permit #: _____
- ENHR Permit #: _____
- GSW Permit #: _____

Spud Date or Recompletion Date Date Reached TD Completion Date or Recompletion Date

API No. 15 - _____

Spot Description: _____

_____ - _____ - _____ Sec. _____ Twp. _____ S. R. _____ East West

_____ Feet from North / South Line of Section

_____ Feet from East / West Line of Section

Footages Calculated from Nearest Outside Section Corner:

- NE NW SE SW

County: _____

Lease Name: _____ Well #: _____

Field Name: _____

Producing Formation: _____

Elevation: Ground: _____ Kelly Bushing: _____

Total Depth: _____ Plug Back Total Depth: _____

Amount of Surface Pipe Set and Cemented at: _____ Feet

Multiple Stage Cementing Collar Used? Yes No

If yes, show depth set: _____ Feet

If Alternate II completion, cement circulated from: _____

feet depth to: _____ w/ _____ sx cmt.

Drilling Fluid Management Plan

(Data must be collected from the Reserve Pit)

Chloride content: _____ ppm Fluid volume: _____ bbls

Dewatering method used: _____

Location of fluid disposal if hauled offsite: _____

Operator Name: _____

Lease Name: _____ License #: _____

Quarter _____ Sec. _____ Twp. _____ S. R. _____ East West

County: _____ Permit #: _____

AFFIDAVIT

I am the affiant and I hereby certify that all requirements of the statutes, rules and regulations promulgated to regulate the oil and gas industry have been fully complied with and the statements herein are complete and correct to the best of my knowledge.

Submitted Electronically

KCC Office Use ONLY

- Letter of Confidentiality Received
Date: _____
- Confidential Release Date: _____
- Wireline Log Received
- Geologist Report Received
- UIC Distribution
- ALT I II III Approved by: _____ Date: _____



Operator Name: _____ Lease Name: _____ Well #: _____

Sec. _____ Twp. _____ S. R. _____ East West County: _____

INSTRUCTIONS: Show important tops and base of formations penetrated. Detail all cores. Report all final copies of drill stems tests giving interval tested, time tool open and closed, flowing and shut-in pressures, whether shut-in pressure reached static level, hydrostatic pressures, bottom hole temperature, fluid recovery, and flow rates if gas to surface test, along with final chart(s). Attach extra sheet if more space is needed. Attach complete copy of all Electric Wire-line Logs surveyed. Attach final geological well site report.

Drill Stem Tests Taken <input type="checkbox"/> Yes <input type="checkbox"/> No <i>(Attach Additional Sheets)</i> Samples Sent to Geological Survey <input type="checkbox"/> Yes <input type="checkbox"/> No Cores Taken <input type="checkbox"/> Yes <input type="checkbox"/> No Electric Log Run <input type="checkbox"/> Yes <input type="checkbox"/> No Electric Log Submitted Electronically <input type="checkbox"/> Yes <input type="checkbox"/> No <i>(If no, Submit Copy)</i> List All E. Logs Run: _____	<input type="checkbox"/> Log Formation (Top), Depth and Datum <input type="checkbox"/> Sample Name Top Datum
---	---

CASING RECORD <input type="checkbox"/> New <input type="checkbox"/> Used							
Report all strings set-conductor, surface, intermediate, production, etc.							
Purpose of String	Size Hole Drilled	Size Casing Set (In O.D.)	Weight Lbs. / Ft.	Setting Depth	Type of Cement	# Sacks Used	Type and Percent Additives

ADDITIONAL CEMENTING / SQUEEZE RECORD				
Purpose:	Depth Top Bottom	Type of Cement	# Sacks Used	Type and Percent Additives
_____ Perforate _____ Protect Casing _____ Plug Back TD _____ Plug Off Zone				

Shots Per Foot	PERFORATION RECORD - Bridge Plugs Set/Type Specify Footage of Each Interval Perforated	Acid, Fracture, Shot, Cement Squeeze Record <i>(Amount and Kind of Material Used)</i>	Depth

TUBING RECORD: Size: _____ Set At: _____ Packer At: _____ Liner Run: Yes No

Date of First, Resumed Production, SWD or ENHR. _____ Producing Method: Flowing Pumping Gas Lift Other *(Explain)* _____

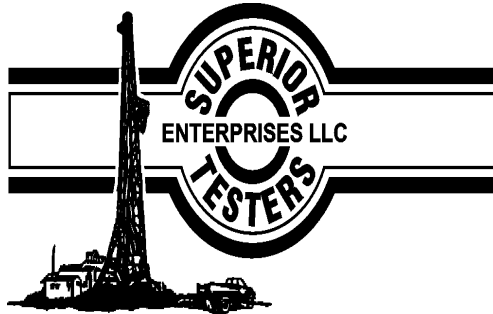
Estimated Production Per 24 Hours	Oil Bbbs.	Gas Mcf	Water Bbbs.	Gas-Oil Ratio	Gravity
-----------------------------------	-----------	---------	-------------	---------------	---------

DISPOSITION OF GAS: <input type="checkbox"/> Vented <input type="checkbox"/> Sold <input type="checkbox"/> Used on Lease <i>(If vented, Submit ACO-18.)</i>	METHOD OF COMPLETION: <input type="checkbox"/> Open Hole <input type="checkbox"/> Perf. <input type="checkbox"/> Dually Comp. <input type="checkbox"/> Commingled <i>(Submit ACO-5)</i> <input type="checkbox"/> Other <i>(Specify)</i> _____ <input type="checkbox"/> Other <i>(Specify)</i> _____	PRODUCTION INTERVAL: _____ _____
---	--	--

Form	ACO1 - Well Completion
Operator	Pickrell Drilling Company, Inc.
Well Name	Chapman 'D' 1
Doc ID	1106074

Tops

Name	Top	Datum
T/Anhydrite	1943	(+583)
B/Anhydrite	1980	(+546)
Heebner	3766	(-1240)
Lansing	3809	(-1283)
Stark	4048	(-1522)
Fort Scott	4314	(-1787)
Cherokee Shale	4338	(-1812)
Mississippi	4413	(-1887)
Mississippi dolomite	4419	(-1893)



DRILL STEM TEST REPORT

Prepared For: **Pickrell Drilling Company Inc.**

100 South Main Suite 505
Wichita, Kansas 67202-3738

ATTN: Jerry Smith

#1 Champamn "D"

35-15s-26w Gove County

Start Date: 2012.11.07 @ 00:00:00

End Date: 2012.11.07 @ 00:00:00

Job Ticket #: 17763 DST #: 1

Superior Testers Enterprises LLC
PO Box 138 Great Bend KS 67530
1-800-792-6902

Printed: 2012.11.08 @ 08:28:55



DRILL STEM TEST REPORT

Pickrell Drilling Company Inc.

35-15s-26w Gove County

100 South Main Suite 505
Wichita, Kansas 67202-3738

#1 Champamn "D"

Job Ticket: 17763

DST#: 1

ATTN: Jerry Smith

Test Start: 2012.11.07 @ 00:00:00

GENERAL INFORMATION:

Formation: **Forth Scott**

Deviated: No Whipstock: ft (KB)

Time Tool Opened: 00:00:00

Time Test Ended: 00:00:00

Test Type: Conventional Bottom Hole (Initial)

Tester: Gene Budig

Unit No: 3335

Interval: 4260.00 ft (KB) To 4334.00 ft (KB) (TVD)

Reference Elevations: 2526.00 ft (KB)

Total Depth: 4334.00 ft (KB) (TVD)

2519.00 ft (CF)

Hole Diameter: 7.88 inches Hole Condition: Fair

KB to GR/CF: 7.00 ft

Serial #: 6839 Inside

Press @ RunDepth: 78.26 psia @ 4329.77 ft (KB)

Capacity: 5000.00 psia

Start Date: 2012.11.07 End Date: 2012.11.07

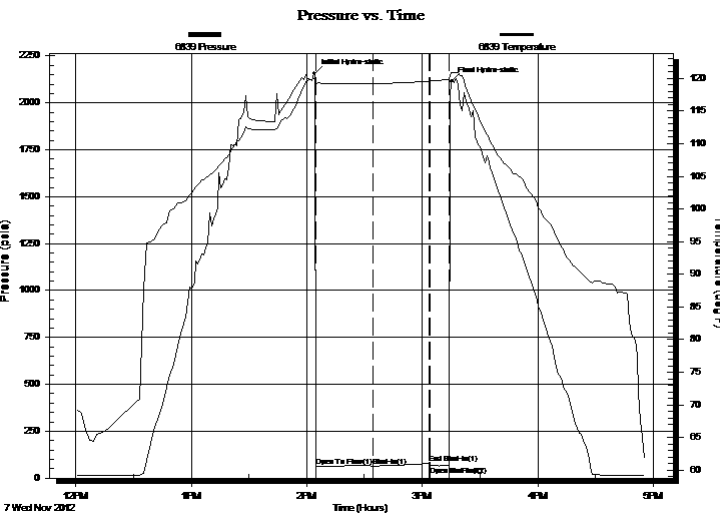
Last Calib.: 2012.11.07

Start Time: 12:01:00 End Time: 16:55:30

Time On Btm: 2012.11.07 @ 14:04:00

Time Off Btm: 2012.11.07 @ 15:15:00

TEST COMMENT: 1st Opening 30 Minutes w eak blow for 10 minutes then a weak intermittant blow for the remainder
 1st Shut-In 30 Minutes-No blow back
 2nd Opening 10 Minutes-No blow -flushed tool after 5 minutes-Good surgte-No help-Came out of the hole
 2nd Shut-In None Taken



PRESSURE SUMMARY

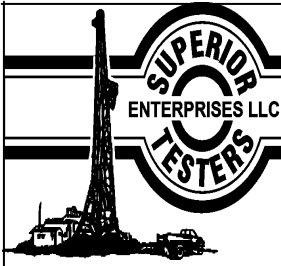
Time (Min.)	Pressure (psia)	Temp (deg F)	Annotation
0	2155.77	119.92	Initial Hydro-static
1	63.00	118.98	Open To Flow (1)
31	64.01	119.17	Shut-In(1)
60	78.26	119.58	End Shut-In(1)
60	65.56	119.58	Open To Flow (2)
70	65.85	119.81	Shut-In(2)
71	2113.57	120.88	Final Hydro-static

Recovery

Length (ft)	Description	Volume (bbl)
5.00	Drilling Mud	0.07

Gas Rates

	Choke (inches)	Pressure (psia)	Gas Rate (Mcf/d)



DRILL STEM TEST REPORT

Pickrell Drilling Company Inc.

35-15s-26w Gove County

100 South Main Suite 505
Wichita, Kansas 67202-3738

#1 Champamn "D"

Job Ticket: 17763

DST#: 1

ATTN: Jerry Smith

Test Start: 2012.11.07 @ 00:00:00

GENERAL INFORMATION:

Formation: **Forth Scott**

Deviated: No Whipstock: ft (KB)

Time Tool Opened: 00:00:00

Time Test Ended: 00:00:00

Test Type: Conventional Bottom Hole (Initial)

Tester: Gene Budig

Unit No: 3335

Interval: 4260.00 ft (KB) To 4334.00 ft (KB) (TVD)

Reference Elevations: 2526.00 ft (KB)

Total Depth: 4334.00 ft (KB) (TVD)

2519.00 ft (CF)

Hole Diameter: 7.88 inches Hole Condition: Fair

KB to GR/CF: 7.00 ft

Serial #: 6748 Outside

Press @ RunDepth: 76.36 psia @ 4330.77 ft (KB)

Capacity: 5000.00 psia

Start Date: 2012.11.07

End Date: 2012.11.07

Last Calib.: 2012.11.07

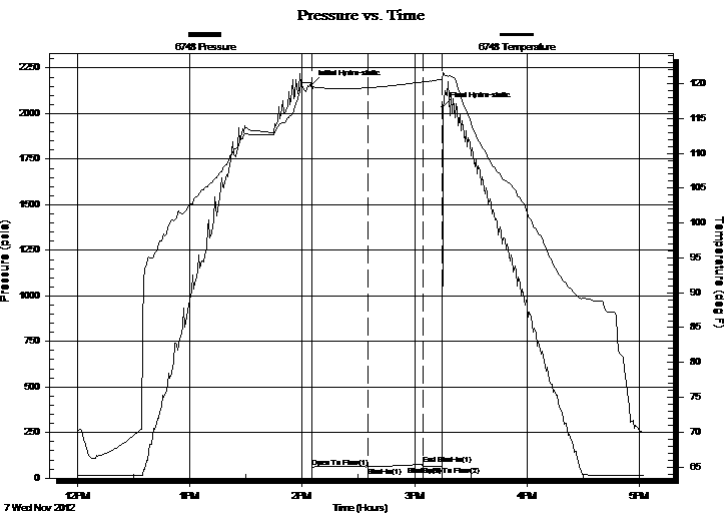
Start Time: 12:00:05

End Time: 17:02:50

Time On Btm: 2012.11.07 @ 14:04:55

Time Off Btm: 2012.11.07 @ 15:15:05

TEST COMMENT: 1st Opening 30 Minutes w eak blow for 10 minutes then a weak intermittant blow for the remainder
 1st Shut-In 30 Minutes-No blow back
 2nd Opening 10 Minutes-No blow -flushed tool after 5 minutes-Good surgte-No help-Came out of the hole
 2nd Shut-In None Taken



PRESSURE SUMMARY

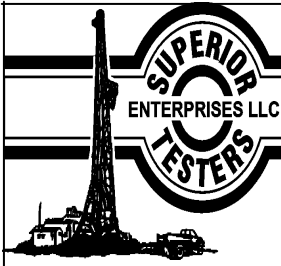
Time (Min.)	Pressure (psia)	Temp (deg F)	Annotation
0	2157.07	120.20	Initial Hydro-static
1	58.92	118.80	Open To Flow (1)
31	61.81	119.40	Shut-In(1)
60	76.36	120.24	End Shut-In(1)
60	64.29	120.23	Open To Flow (2)
70	63.73	120.62	Shut-In(2)
71	2037.56	121.52	Final Hydro-static

Recovery

Length (ft)	Description	Volume (bbl)
5.00	Drilling Mud	0.07

Gas Rates

	Choke (inches)	Pressure (psia)	Gas Rate (Mcf/d)



DRILL STEM TEST REPORT

Pickrell Drilling Company Inc.

35-15s-26w Gove County

100 South Main Suite 505
Wichita, Kansas 67202-3738

#1 Champamn "D"

Job Ticket: 17763

DST#: 1

ATTN: Jerry Smith

Test Start: 2012.11.07 @ 00:00:00

GENERAL INFORMATION:

Formation: **Forth Scott**

Deviated: No Whipstock: ft (KB)

Time Tool Opened: 00:00:00

Time Test Ended: 00:00:00

Test Type: Conventional Bottom Hole (Initial)

Tester: Gene Budig

Unit No: 3335

Interval: 4260.00 ft (KB) To 4334.00 ft (KB) (TVD)

Reference Elevations: 2526.00 ft (KB)

Total Depth: 4334.00 ft (KB) (TVD)

2519.00 ft (CF)

Hole Diameter: 7.88 inches Hole Condition: Fair

KB to GR/CF: 7.00 ft

Serial #: 6651 Inside

Press @ Run Depth: 64.88 psia @ 4328.77 ft (KB)

Capacity: 5000.00 psia

Start Date: 2012.11.07 End Date: 2012.11.07

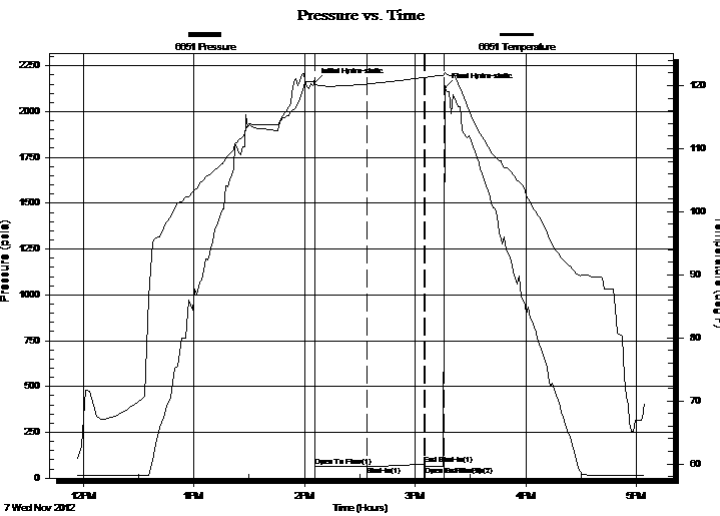
Last Calib.: 2012.11.08

Start Time: 05:40:00 End Time: 17:04:23

Time On Btm: 2012.11.07 @ 14:05:23

Time Off Btm: 2012.11.07 @ 15:16:23

TEST COMMENT: 1st Opening 30 Minutes w eak blow for 10 minutes then a weak intermittant blow for the remainder
 1st Shut-In 30 Minutes-No blow back
 2nd Opening 10 Minutes-No blow -flushed tool after 5 minutes-Good surgte-No help-Came out of the hole
 2nd Shut-In None Taken



PRESSURE SUMMARY

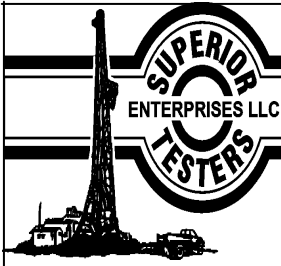
Time (Min.)	Pressure (psia)	Temp (deg F)	Annotation
0	2158.80	120.70	Initial Hydro-static
1	62.56	120.14	Open To Flow (1)
29	64.17	120.26	Shut-In(1)
60	77.45	121.28	End Shut-In(1)
60	63.91	121.29	Open To Flow (2)
70	64.88	121.66	End Shut-In(2)
71	2130.80	122.09	Final Hydro-static

Recovery

Length (ft)	Description	Volume (bbl)
5.00	Drilling Mud	0.07

Gas Rates

Choke (inches)	Pressure (psia)	Gas Rate (Mcf/d)



DRILL STEM TEST REPORT

TOOL DIAGRAM

Pickrell Drilling Company Inc.

35-15s-26w Gove County

100 South Main Suite 505
Wichita, Kansas 67202-3738

#1 Champamn "D"

Job Ticket: 17763

DST#: 1

ATTN: Jerry Smith

Test Start: 2012.11.07 @ 00:00:00

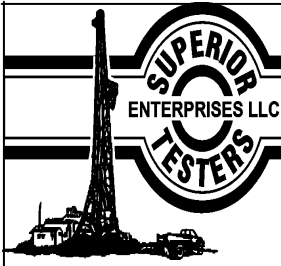
Tool Information

Drill Pipe:	Length: 4244.00 ft	Diameter: 3.80 inches	Volume: 59.53 bbl	Tool Weight: 2000.00 lb
Heavy Wt. Pipe:	Length: 0.00 ft	Diameter: 0.00 inches	Volume: 0.00 bbl	Weight set on Packer: 20000.00 lb
Drill Collar:	Length: 0.00 ft	Diameter: 0.00 inches	Volume: 0.00 bbl	Weight to Pull Loose: 82000.00 lb
			<u>Total Volume: 59.53 bbl</u>	Tool Chased 0.00 ft
Drill Pipe Above KB:	7.00 ft			String Weight: Initial 60000.00 lb
Depth to Top Packer:	4260.00 ft			Final 60000.00 lb
Depth to Bottom Packer:	ft			
Interval between Packers:	73.77 ft			
Tool Length:	96.77 ft			
Number of Packers:	2	Diameter: 6.75 inches		

Tool Comments:

Tool Description	Length (ft)	Serial No.	Position	Depth (ft)	Accum. Lengths
Change Over Sub	1.00			4238.00	
Shut-In Tool	5.00			4243.00	
Hydroic Tool	5.00			4248.00	
Safety Joint	2.00			4250.00	
Packer	5.00			4255.00	23.00 Bottom Of Top Packer
Packer	5.00			4260.00	
Perforations	0.00			4260.00	
Change Over Sub	0.75			4260.75	
Drill Pipe	31.27			4292.02	
Change Over Sub	0.75			4292.77	
Perforations	35.00			4327.77	
Recorder	1.00	6651	Inside	4328.77	
Recorder	1.00	6839	Inside	4329.77	
Recorder	1.00	6748	Outside	4330.77	
Bullnose	3.00			4333.77	73.77 Bottom Packers & Anchor

Total Tool Length: 96.77



DRILL STEM TEST REPORT

FLUID SUMMARY

Pickrell Drilling Company Inc.

35-15s-26w Gove County

100 South Main Suite 505
Wichita, Kansas 67202-3738

#1 Champamn "D"

Job Ticket: 17763

DST#: 1

ATTN: Jerry Smith

Test Start: 2012.11.07 @ 00:00:00

Mud and Cushion Information

Mud Type: Gel Chem

Cushion Type:

Oil API:

deg API

Mud Weight: 9.00 lb/gal

Cushion Length:

ft

Water Salinity:

ppm

Viscosity: 52.00 sec/qt

Cushion Volume:

bbbl

Water Loss: 7.60 in³

Gas Cushion Type:

Resistivity: ohm.m

Gas Cushion Pressure:

psia

Salinity: 1800.00 ppm

Filter Cake: 1.00 inches

Recovery Information

Recovery Table

Length ft	Description	Volume bbl
5.00	Drilling Mud	0.070

Total Length: 5.00 ft Total Volume: 0.070 bbl

Num Fluid Samples: 0

Num Gas Bombs: 0

Serial #:

Laboratory Name:

Laboratory Location:

Recovery Comments:

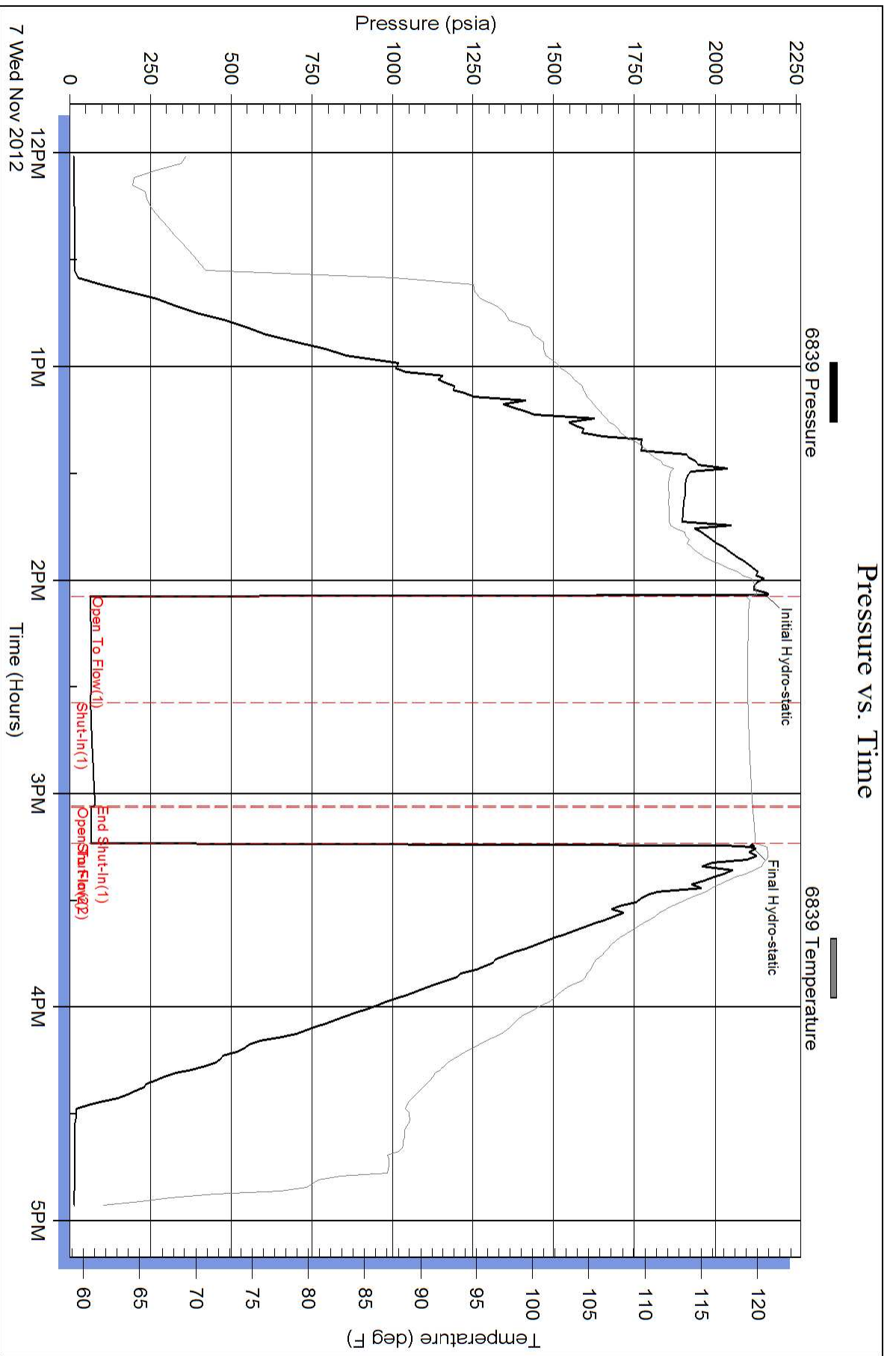
Serial #: 6839

Inside

Pickrell Drilling Company Inc.

#1 Champarn "D"

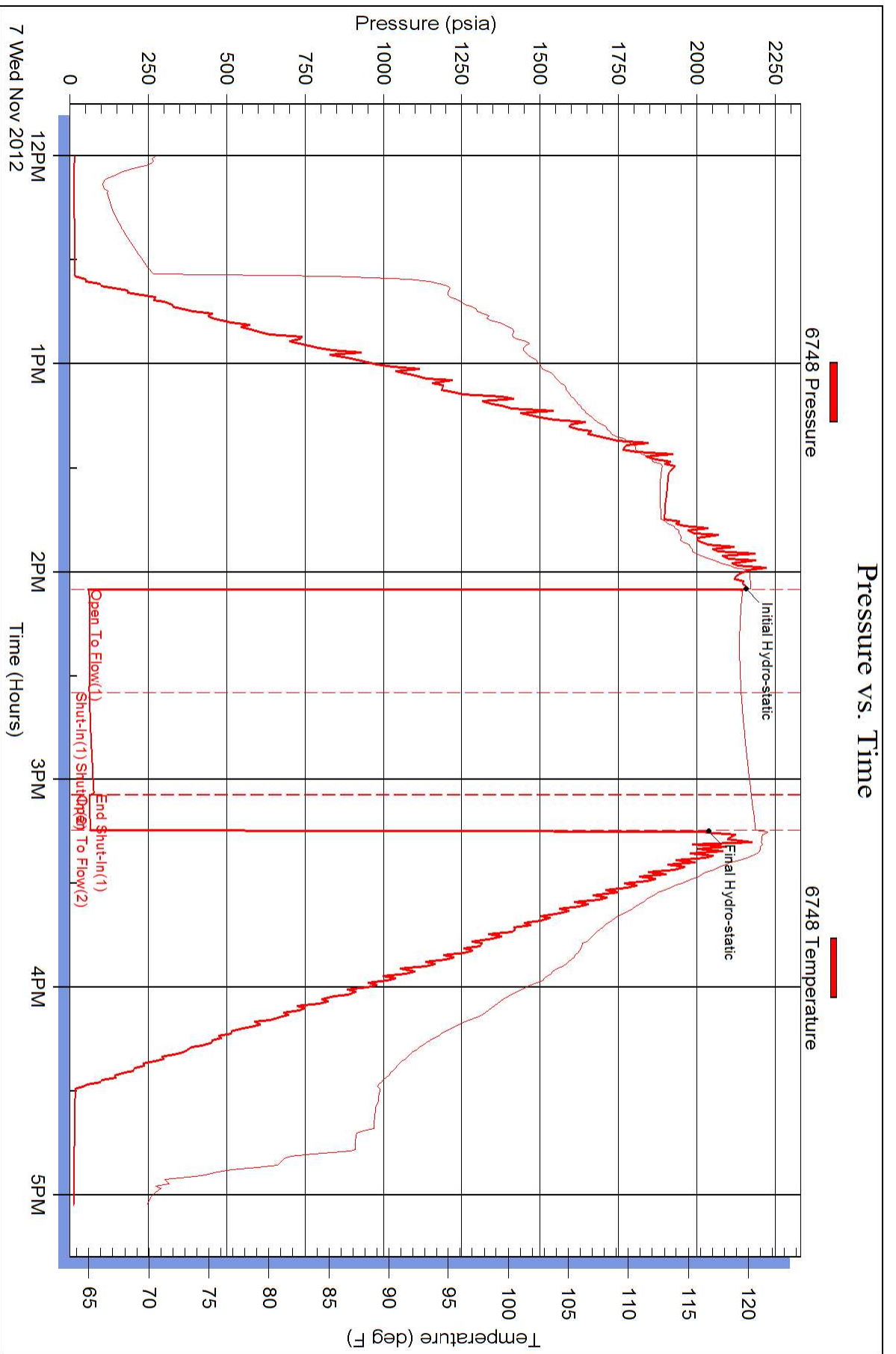
DST Test Number: 1



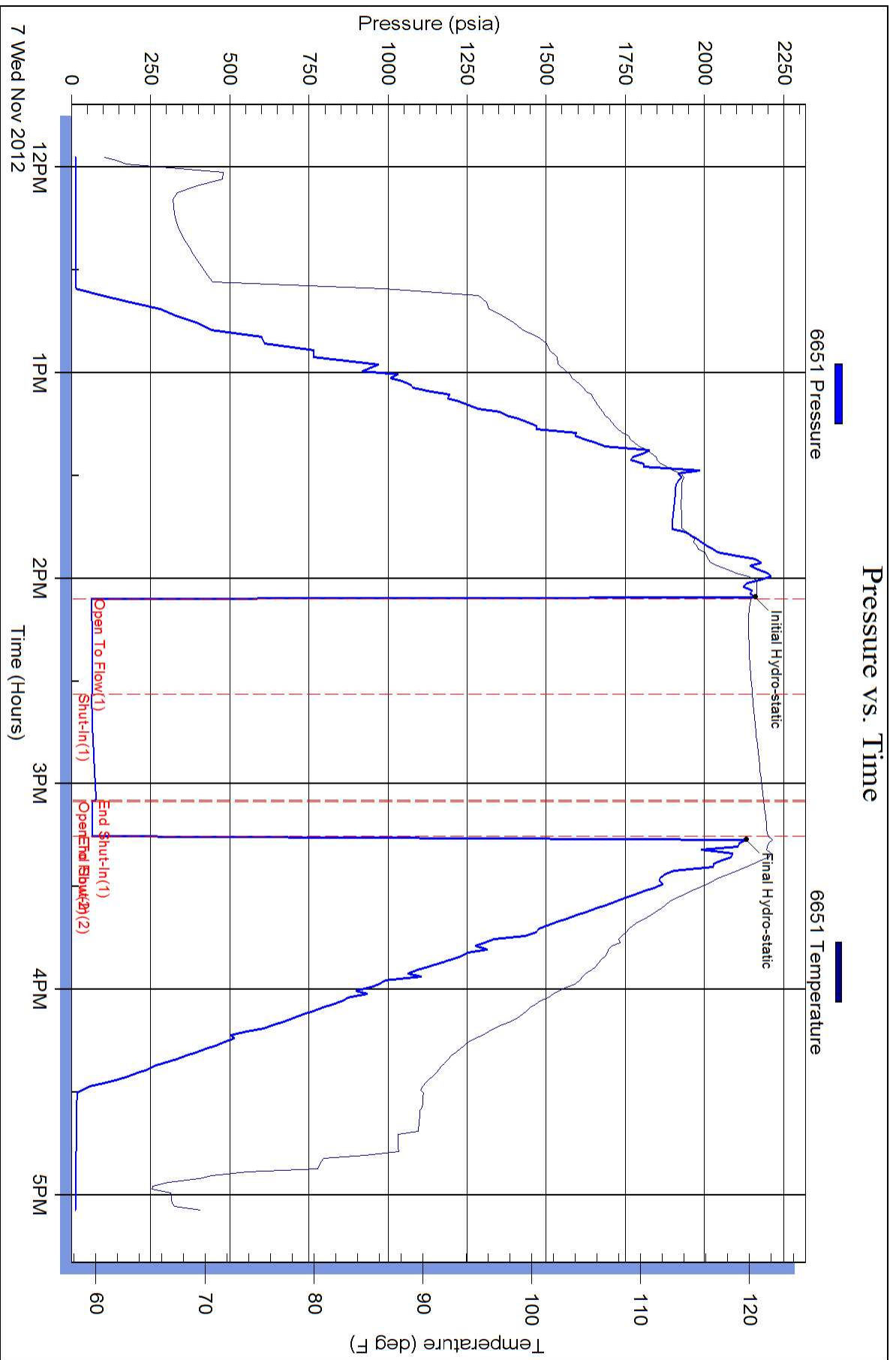
Superior Testers Enterprises LLC

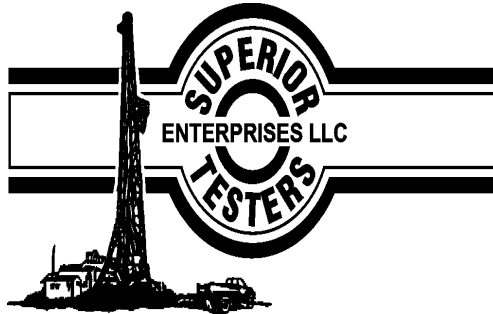
Ref. No: 17763

Printed: 2012.11.08 @ 08:28:56



Pressure vs. Time





DRILL STEM TEST REPORT

Prepared For: **Pickrell Drilling Company Inc.**

100 South Main Suite 505
Wichita, Kansas 67202-3738

ATTN: Jerry Smith

#1 Champamn "D"

35-15s-26w Gove County

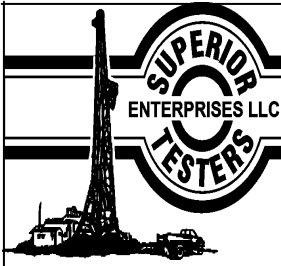
Start Date: 2012.11.08 @ 00:00:00

End Date: 2012.11.08 @ 00:00:00

Job Ticket #: 17764 DST #: 2

Superior Testers Enterprises LLC
PO Box 138 Great Bend KS 67530
1-800-792-6902

Printed: 2012.11.09 @ 15:58:41



DRILL STEM TEST REPORT

Pickrell Drilling Company Inc.

35-15s-26w Gove County

100 South Main Suite 505
Wichita, Kansas 67202-3738

#1 Champamn "D"

Job Ticket: 17764

DST#: 2

ATTN: Jerry Smith

Test Start: 2012.11.08 @ 00:00:00

GENERAL INFORMATION:

Formation: **Mississippi**
 Deviated: No Whipstock: ft (KB)
 Test Type: Conventional Bottom Hole (Initial)
 Time Tool Opened: 00:00:00 Tester: Gene Budig
 Time Test Ended: 00:00:00 Unit No: 3335
 Interval: **4380.00 ft (KB) To 4425.00 ft (KB) (TVD)** Reference Elevations: 2526.00 ft (KB)
 Total Depth: 4425.00 ft (KB) (TVD) 2519.00 ft (CF)
 Hole Diameter: 7.88 inches Hole Condition: Fair KB to GR/CF: 7.00 ft

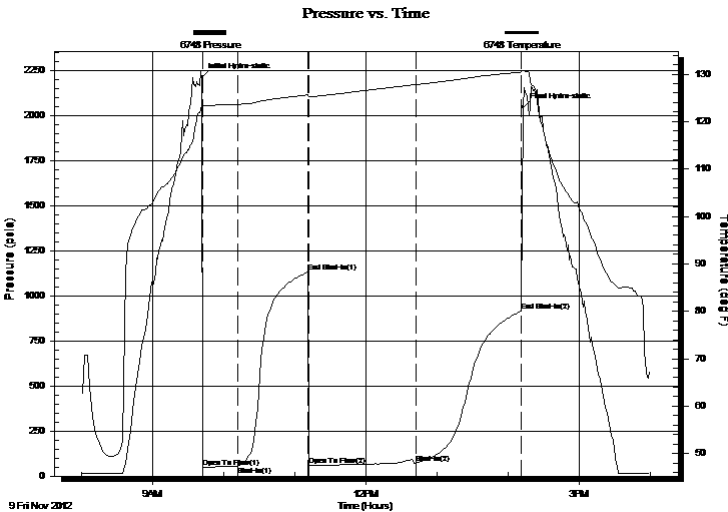
Serial #: 6748

Outside

Press @ Run Depth: 918.09 psia @ 4422.00 ft (KB) Capacity: 5000.00 psia
 Start Date: 2012.11.09 End Date: 2012.11.09 Last Calib.: 2012.11.09
 Start Time: 08:00:00 End Time: 15:59:30 Time On Btm: 2012.11.09 @ 09:41:30
 Time Off Btm: 2012.11.09 @ 14:12:30

TEST COMMENT: 1st Opening 30 Minutes Weak building blow built to 4 inches into the water
 1st Shut-In 60 Minutes-No blow back
 2nd Opening 90 Minutes-Weak building blow built to 7 1/2 inches into the water
 2nd Shut-In 90 Minutes-No blow back

PRESSURE SUMMARY



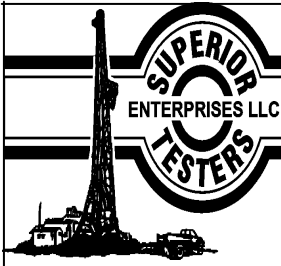
Time (Min.)	Pressure (psia)	Temp (deg F)	Annotation
0	2212.54	123.65	Initial Hydro-static
1	48.65	123.06	Open To Flow (1)
31	56.82	123.61	Shut-In(1)
90	1132.39	125.64	End Shut-In(1)
91	61.35	125.23	Open To Flow (2)
181	73.33	127.78	Shut-In(2)
270	918.09	130.44	End Shut-In(2)
271	2045.36	130.78	Final Hydro-static

Recovery

Length (ft)	Description	Volume (bbl)
0.00	100 feet of gas in the pipe	0.00
30.00	Clean Gassy Oil Gravity 41 Corrected	0.42
0.00	15%Gas 85%Oil	0.00
50.00	Heavy Oil Cut Mud	0.70
0.00	45%Oil 55%Mud	0.00

Gas Rates

Choke (inches)	Pressure (psia)	Gas Rate (Mcf/d)



DRILL STEM TEST REPORT

Pickrell Drilling Company Inc.

35-15s-26w Gove County

100 South Main Suite 505
Wichita, Kansas 67202-3738

#1 Champamn "D"

Job Ticket: 17764

DST#: 2

ATTN: Jerry Smith

Test Start: 2012.11.08 @ 00:00:00

GENERAL INFORMATION:

Formation: **Mississippi**

Deviated: No Whipstock: ft (KB)

Time Tool Opened: 00:00:00

Time Test Ended: 00:00:00

Test Type: Conventional Bottom Hole (Initial)

Tester: Gene Budig

Unit No: 3335

Interval: 4380.00 ft (KB) To 4425.00 ft (KB) (TVD)

Reference Elevations: 2526.00 ft (KB)

Total Depth: 4425.00 ft (KB) (TVD)

2519.00 ft (CF)

Hole Diameter: 7.88 inches Hole Condition: Fair

KB to GR/CF: 7.00 ft

Serial #: 6839

Inside

Press @ RunDepth: 917.54 psia @ 4421.00 ft (KB)

Capacity: 5000.00 psia

Start Date: 2012.11.09

End Date:

2012.11.09

Last Calib.:

2012.11.09

Start Time: 08:00:00

End Time:

16:00:30

Time On Btm:

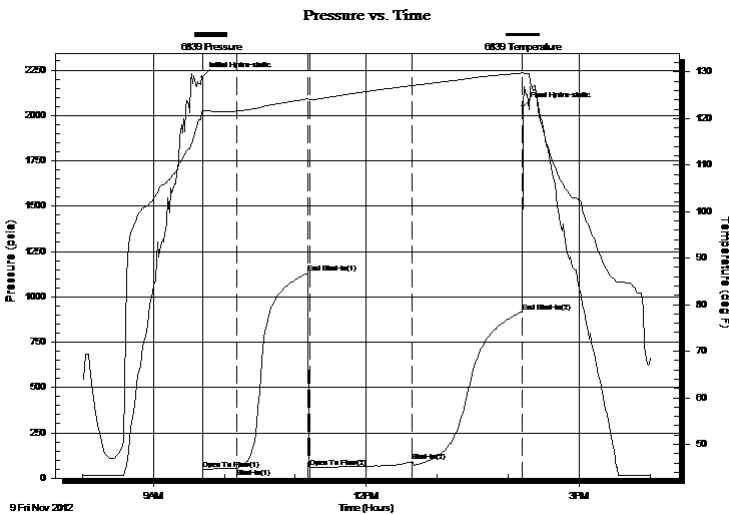
2012.11.09 @ 09:41:30

Time Off Btm:

2012.11.09 @ 14:12:30

TEST COMMENT: 1st Opening 30 Minutes Weak building blow built to 4 inches into the water
1st Shut-In 60 Minutes-No blow back
2nd Opening 90 Minutes-Weak building blow built to 7 1/2 inches into the water
2nd Shut-In 90 Minutes-No blow back

PRESSURE SUMMARY



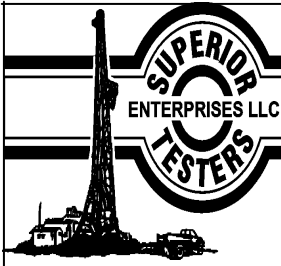
Time (Min.)	Pressure (psia)	Temp (deg F)	Annotation
0	2212.57	122.05	Initial Hydro-static
1	48.57	121.63	Open To Flow (1)
29	55.85	121.62	Shut-In(1)
89	1130.44	124.24	End Shut-In(1)
91	59.04	123.98	Open To Flow (2)
178	91.19	127.10	Shut-In(2)
271	917.54	129.77	End Shut-In(2)
271	2049.28	129.91	Final Hydro-static

Recovery

Gas Rates

Length (ft)	Description	Volume (bbl)
0.00	100 feet of gas in the pipe	0.00
30.00	Clean Gassy Oil Gravity 41 Corrected	0.42
0.00	15%Gas 85%Oil	0.00
50.00	Heavy Oil Cut Mud	0.70
0.00	45%Oil 55%Mud	0.00

	Choke (inches)	Pressure (psia)	Gas Rate (Mcf/d)



DRILL STEM TEST REPORT

TOOL DIAGRAM

Pickrell Drilling Company Inc.

35-15s-26w Gove County

100 South Main Suite 505
Wichita, Kansas 67202-3738

#1 Champamn "D"

Job Ticket: 17764

DST#: 2

ATTN: Jerry Smith

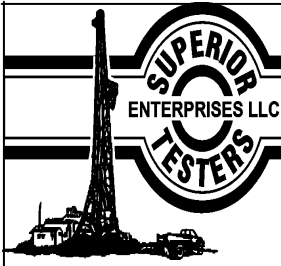
Test Start: 2012.11.08 @ 00:00:00

Tool Information

Drill Pipe:	Length: 4366.00 ft	Diameter: 3.80 inches	Volume: 61.24 bbl	Tool Weight: 2000.00 lb
Heavy Wt. Pipe:	Length: 0.00 ft	Diameter: 0.00 inches	Volume: 0.00 bbl	Weight set on Packer: 20000.00 lb
Drill Collar:	Length: 0.00 ft	Diameter: 0.00 inches	Volume: 0.00 bbl	Weight to Pull Loose: 85000.00 lb
			<u>Total Volume: 61.24 bbl</u>	Tool Chased 0.00 ft
Drill Pipe Above KB:	9.00 ft			String Weight: Initial 60000.00 lb
Depth to Top Packer:	4380.00 ft			Final 60000.00 lb
Depth to Bottom Packer:	ft			
Interval between Packers:	45.00 ft			
Tool Length:	68.00 ft			
Number of Packers:	2	Diameter: 6.75 inches		

Tool Comments:

Tool Description	Length (ft)	Serial No.	Position	Depth (ft)	Accum. Lengths
Change Over Sub	1.00			4358.00	
Shut-In Tool	5.00			4363.00	
Hydroic Tool	5.00			4368.00	
Safety Joint	2.00			4370.00	
Packer	5.00			4375.00	23.00 Bottom Of Top Packer
Packer	5.00			4380.00	
Perforations	40.00			4420.00	
Recorder	1.00	6839	Inside	4421.00	
Recorder	1.00	6748	Outside	4422.00	
Bullnose	3.00			4425.00	45.00 Bottom Packers & Anchor
Total Tool Length:	68.00				



DRILL STEM TEST REPORT

FLUID SUMMARY

Pickrell Drilling Company Inc.

35-15s-26w Gove County

100 South Main Suite 505
Wichita, Kansas 67202-3738

#1 Champamn "D"

Job Ticket: 17764

DST#: 2

ATTN: Jerry Smith

Test Start: 2012.11.08 @ 00:00:00

Mud and Cushion Information

Mud Type: Gel Chem
Mud Weight: 9.00 lb/gal
Viscosity: 52.00 sec/qt
Water Loss: 7.60 in³
Resistivity: ohm.m
Salinity: 1800.00 ppm
Filter Cake: 1.00 inches

Cushion Type:
Cushion Length: ft
Cushion Volume: bbl
Gas Cushion Type:
Gas Cushion Pressure: psia

Oil API: deg API
Water Salinity: ppm

Recovery Information

Recovery Table

Length ft	Description	Volume bbl
0.00	100 feet of gas in the pipe	0.000
30.00	Clean Gassy Oil Gravity 41 Corrected	0.421
0.00	15%Gas 85%Oil	0.000
50.00	Heavy Oil Cut Mud	0.701
0.00	45%Oil 55%Mud	0.000

Total Length: 80.00 ft Total Volume: 1.122 bbl

Num Fluid Samples: 0

Num Gas Bombs: 0

Serial #:

Laboratory Name:

Laboratory Location:

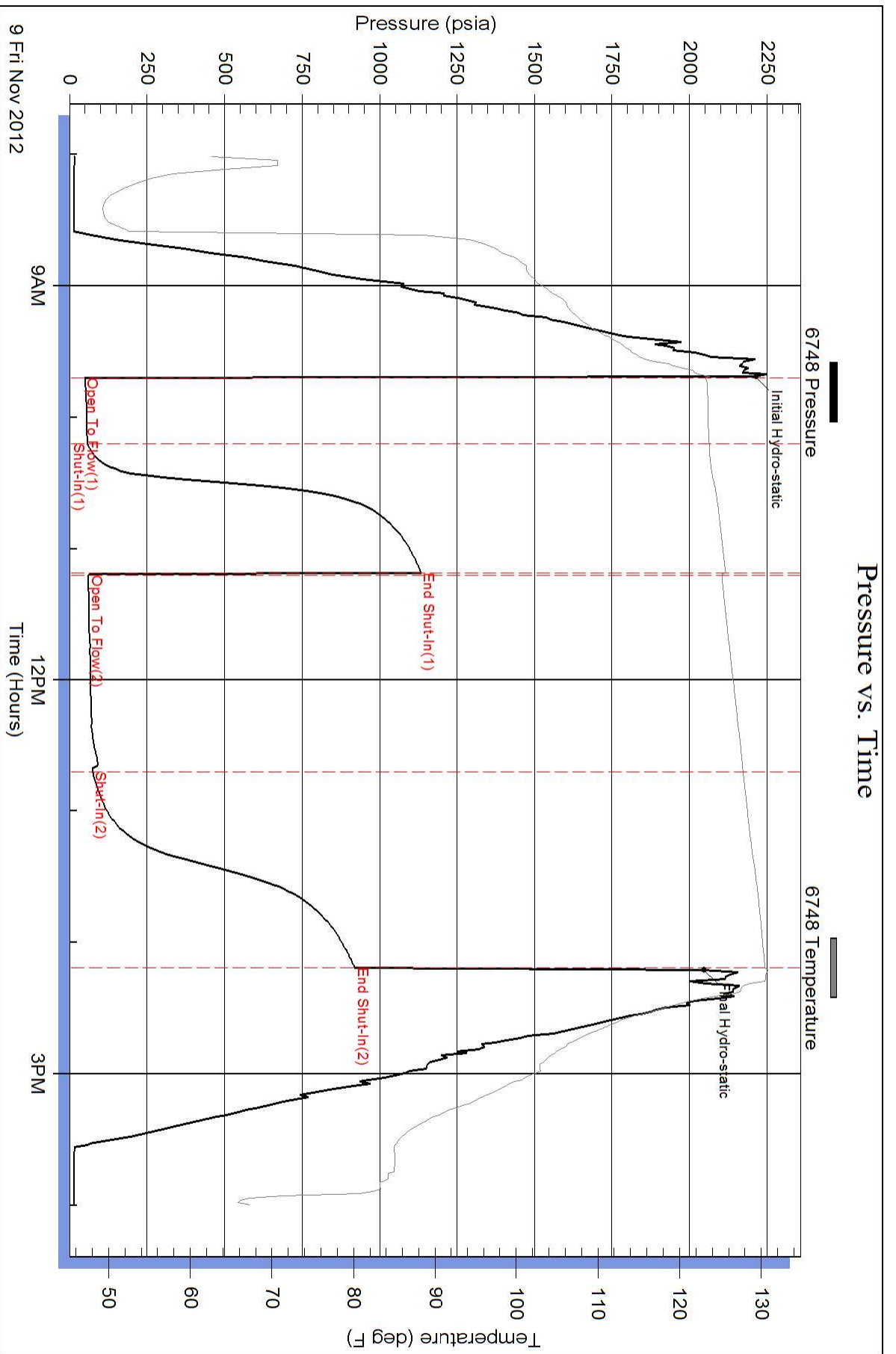
Recovery Comments:

Serial #: 6748

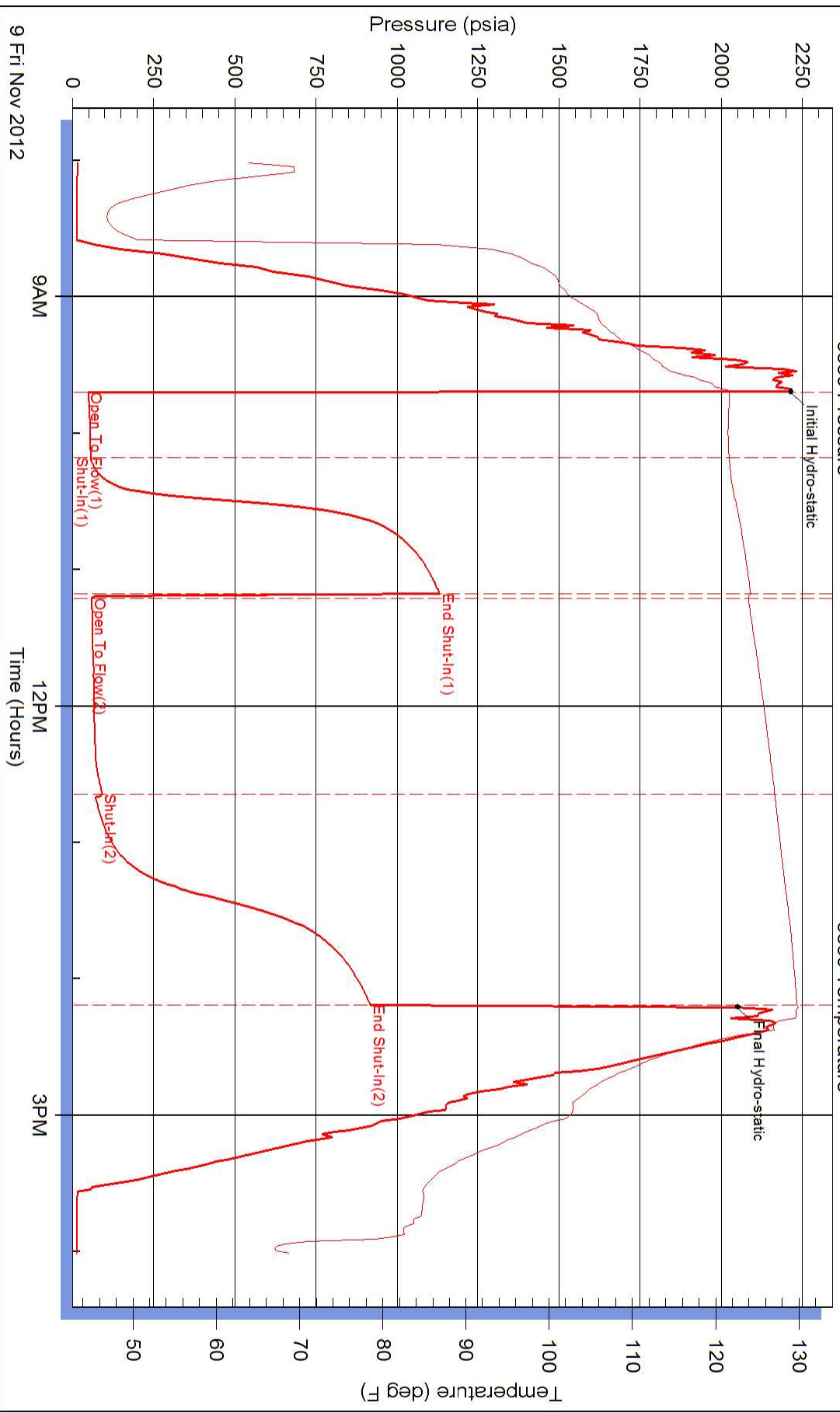
Outside Pckrell Drilling Company Inc.

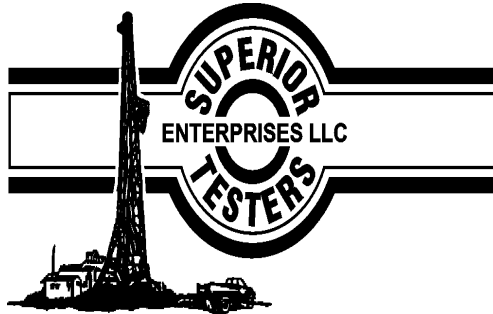
#1 Champarrn "D"

DST Test Number: 2



Pressure vs. Time





DRILL STEM TEST REPORT

Prepared For: **Pickrell Drilling Company Inc.**

100 South Main Suite 505
Wichita, Kansas 67202-3738

ATTN: Jerry Smith

#1 Champamn "D"

35-15s-26w Gove County

Start Date: 2012.11.10 @ 00:00:00

End Date: 2012.11.10 @ 00:00:00

Job Ticket #: 17765 DST #: 3

Superior Testers Enterprises LLC
PO Box 138 Great Bend KS 67530
1-800-792-6902

Printed: 2012.11.10 @ 08:42:14



DRILL STEM TEST REPORT

Pickrell Drilling Company Inc.

35-15s-26w Gove County

100 South Main Suite 505
Wichita, Kansas 67202-3738

#1 Champamn "D"

Job Ticket: 17765

DST#: 3

ATTN: Jerry Smith

Test Start: 2012.11.10 @ 00:00:00

GENERAL INFORMATION:

Formation: **Mississippi**

Deviated: No Whipstock: ft (KB)

Time Tool Opened: 00:00:00

Time Test Ended: 00:00:00

Test Type: Conventional Bottom Hole (Initial)

Tester: gene budig

Unit No: 3335

Interval: 4425.00 ft (KB) To 4435.00 ft (KB) (TVD)

Reference Elevations: 2526.00 ft (KB)

Total Depth: 4435.00 ft (KB) (TVD)

2519.00 ft (CF)

Hole Diameter: 7.88 inches Hole Condition: Fair

KB to GR/CF: 7.00 ft

Serial #: 6748 Outside

Press @ RunDepth: 977.99 psia @ 4432.00 ft (KB)

Capacity: 5000.00 psia

Start Date: 2012.11.10

End Date: 2012.11.10

Last Calib.: 2012.11.10

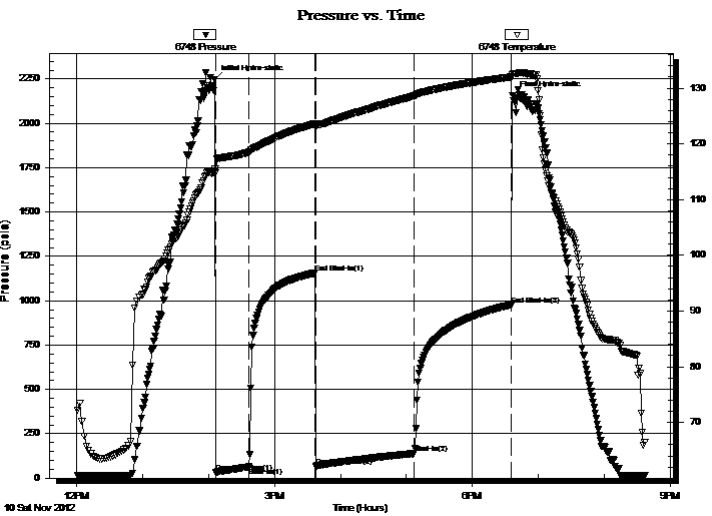
Start Time: 12:00:00

End Time: 20:36:30

Time On Btm: 2012.11.10 @ 14:06:00

Time Off Btm: 2012.11.10 @ 18:36:30

TEST COMMENT: 1st Opening 30 Minutes-Weak building blow built to the bottom of a 5 gallon bucekt in 18 minutes
1st Shut-In 60 Minutes-No Blow back
2nd Opening 90 Minutes-Weak building blow built to the bottom of a 5 gallon bucket in 14 minutes
2nd Shut-In 90 Minutes- No blow back



PRESSURE SUMMARY

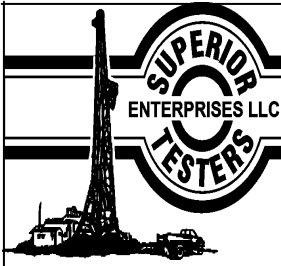
Time (Min.)	Pressure (psia)	Temp (deg F)	Annotation
0	2246.07	115.50	Initial Hydro-static
1	34.25	114.84	Open To Flow (1)
31	63.47	118.49	Shut-In(1)
91	1155.69	123.57	End Shut-In(1)
92	67.76	123.22	Open To Flow (2)
181	138.97	128.58	Shut-In(2)
270	977.99	131.99	End Shut-In(2)
271	2157.78	132.44	Final Hydro-static

Recovery

Length (ft)	Description	Volume (bbl)
0.00	500 few et of gas in the pipe	0.00
240.00	Clean gassy oil Gravity 41 Corrected	3.37
0.00	15% Gas 85% Oil	0.00
45.00	Heavy Oil and Gas Cut Mud	0.63
0.00	25%Gas 57%Oil 15%Mud 3%Water	0.00
45.00	Heavy Oil and Gas Cut Mud	0.63

Gas Rates

	Choke (inches)	Pressure (psia)	Gas Rate (Mcf/d)



DRILL STEM TEST REPORT

Pickrell Drilling Company Inc.

35-15s-26w Gove County

100 South Main Suite 505
Wichita, Kansas 67202-3738

#1 Champamn "D"

Job Ticket: 17765

DST#: 3

ATTN: Jerry Smith

Test Start: 2012.11.10 @ 00:00:00

GENERAL INFORMATION:

Formation: **Mississippi**

Deviated: No Whipstock: ft (KB)

Time Tool Opened: 00:00:00

Time Test Ended: 00:00:00

Test Type: Conventional Bottom Hole (Initial)

Tester: gene budig

Unit No: 3335

Interval: 4425.00 ft (KB) To 4435.00 ft (KB) (TVD)

Reference Elevations: 2526.00 ft (KB)

Total Depth: 4435.00 ft (KB) (TVD)

2519.00 ft (CF)

Hole Diameter: 7.88 inches Hole Condition: Fair

KB to GR/CF: 7.00 ft

Serial #: 6839 Inside

Press @ RunDepth: 976.98 psia @ 4431.00 ft (KB)

Capacity: 5000.00 psia

Start Date: 2012.11.10

End Date: 2012.11.10

Last Calib.: 2012.11.10

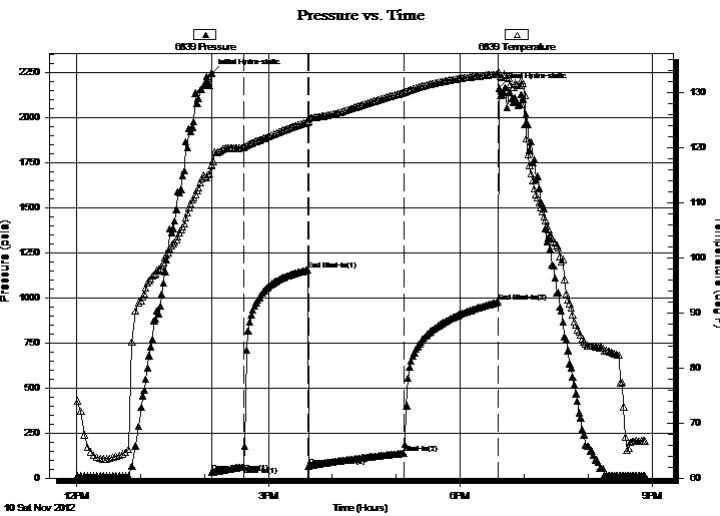
Start Time: 12:00:00

End Time: 20:53:00

Time On Btm: 2012.11.10 @ 14:06:30

Time Off Btm: 2012.11.10 @ 18:36:30

TEST COMMENT: 1st Opening 30 Minutes-Weak building blow built to the bottom of a 5 gallon bucekt in 18 minutes
1st Shut-In 60 Minutes-No Blow back
2nd Opening 90 Minutes-Weak building blow built to the bottom of a 5 gallon bucket in 14 minutes
2nd Shut-In 90 Minutes- No blow back



PRESSURE SUMMARY

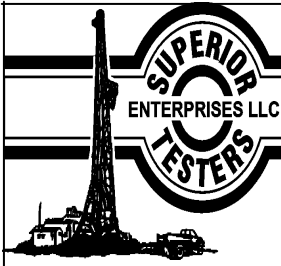
Time (Min.)	Pressure (psia)	Temp (deg F)	Annotation
0	2248.08	116.77	Initial Hydro-static
1	32.89	116.80	Open To Flow (1)
30	63.02	120.01	Shut-In(1)
91	1155.29	124.61	End Shut-In(1)
91	67.57	124.76	Open To Flow (2)
181	138.60	129.94	Shut-In(2)
269	976.98	133.29	End Shut-In(2)
270	2165.99	133.60	Final Hydro-static

Recovery

Length (ft)	Description	Volume (bbl)
0.00	500 few et of gas in the pipe	0.00
240.00	Clean gassy oil Gravity 41 Corrected	3.37
0.00	15% Gas 85% Oil	0.00
45.00	Heavy Oil and Gas Cut Mud	0.63
0.00	25%Gas 57%Oil 15%Mud 3%Water	0.00
45.00	Heavy Oil and Gas Cut Mud	0.63

Gas Rates

	Choke (inches)	Pressure (psia)	Gas Rate (Mcf/d)



DRILL STEM TEST REPORT

TOOL DIAGRAM

Pickrell Drilling Company Inc.

35-15s-26w Gove County

100 South Main Suite 505
Wichita, Kansas 67202-3738

#1 Champamn "D"

Job Ticket: 17765

DST#: 3

ATTN: Jerry Smith

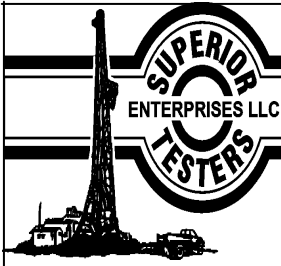
Test Start: 2012.11.10 @ 00:00:00

Tool Information

Drill Pipe:	Length: 4430.00 ft	Diameter: 3.80 inches	Volume: 62.14 bbl	Tool Weight: 2000.00 lb
Heavy Wt. Pipe:	Length: 0.00 ft	Diameter: 0.00 inches	Volume: 0.00 bbl	Weight set on Packer: 20000.00 lb
Drill Collar:	Length: 0.00 ft	Diameter: 0.00 inches	Volume: 0.00 bbl	Weight to Pull Loose: 80000.00 lb
			<u>Total Volume: 62.14 bbl</u>	Tool Chased 0.00 ft
Drill Pipe Above KB:	28.00 ft			String Weight: Initial 60000.00 lb
Depth to Top Packer:	4425.00 ft			Final 60000.00 lb
Depth to Bottom Packer:	ft			
Interval between Packers:	10.00 ft			
Tool Length:	33.00 ft			
Number of Packers:	2	Diameter: 6.75 inches		

Tool Comments:

Tool Description	Length (ft)	Serial No.	Position	Depth (ft)	Accum. Lengths
Change Over Sub	1.00			4403.00	
Shut-In Tool	5.00			4408.00	
Hydroic Tool	5.00			4413.00	
Safety Joint	2.00			4415.00	
Packer	5.00			4420.00	23.00 Bottom Of Top Packer
Packer	5.00			4425.00	
Perforations	5.00			4430.00	
Recorder	1.00	6839	Inside	4431.00	
Recorder	1.00	6748	Outside	4432.00	
Bullnose	3.00			4435.00	10.00 Bottom Packers & Anchor
Total Tool Length:	33.00				



DRILL STEM TEST REPORT

FLUID SUMMARY

Pickrell Drilling Company Inc.

35-15s-26w Gove County

100 South Main Suite 505
Wichita, Kansas 67202-3738

#1 Champamn "D"

Job Ticket: 17765

DST#: 3

ATTN: Jerry Smith

Test Start: 2012.11.10 @ 00:00:00

Mud and Cushion Information

Mud Type: Gel Chem
Mud Weight: 9.00 lb/gal
Viscosity: 49.00 sec/qt
Water Loss: 10.40 in³
Resistivity: ohm.m
Salinity: 2500.00 ppm
Filter Cake: 1.00 inches

Cushion Type:
Cushion Length: ft
Cushion Volume: bbl
Gas Cushion Type:
Gas Cushion Pressure: psia

Oil API: deg API
Water Salinity: ppm

Recovery Information

Recovery Table

Length ft	Description	Volume bbl
0.00	500 feet of gas in the pipe	0.000
240.00	Clean gassy oil Gravity 41 Corrected	3.367
0.00	15% Gas 85% Oil	0.000
45.00	Heavy Oil and Gas Cut Mud	0.631
0.00	25%Gas 57%Oil 15%Mud 3%Water	0.000
45.00	Heavy Oil and Gas Cut Mud	0.631
0.00	18%Gas 60%Oil 8%Mud 14%Water	0.000
0.00	Chlorides 5,000	0.000

Total Length: 330.00 ft Total Volume: 4.629 bbl

Num Fluid Samples: 0

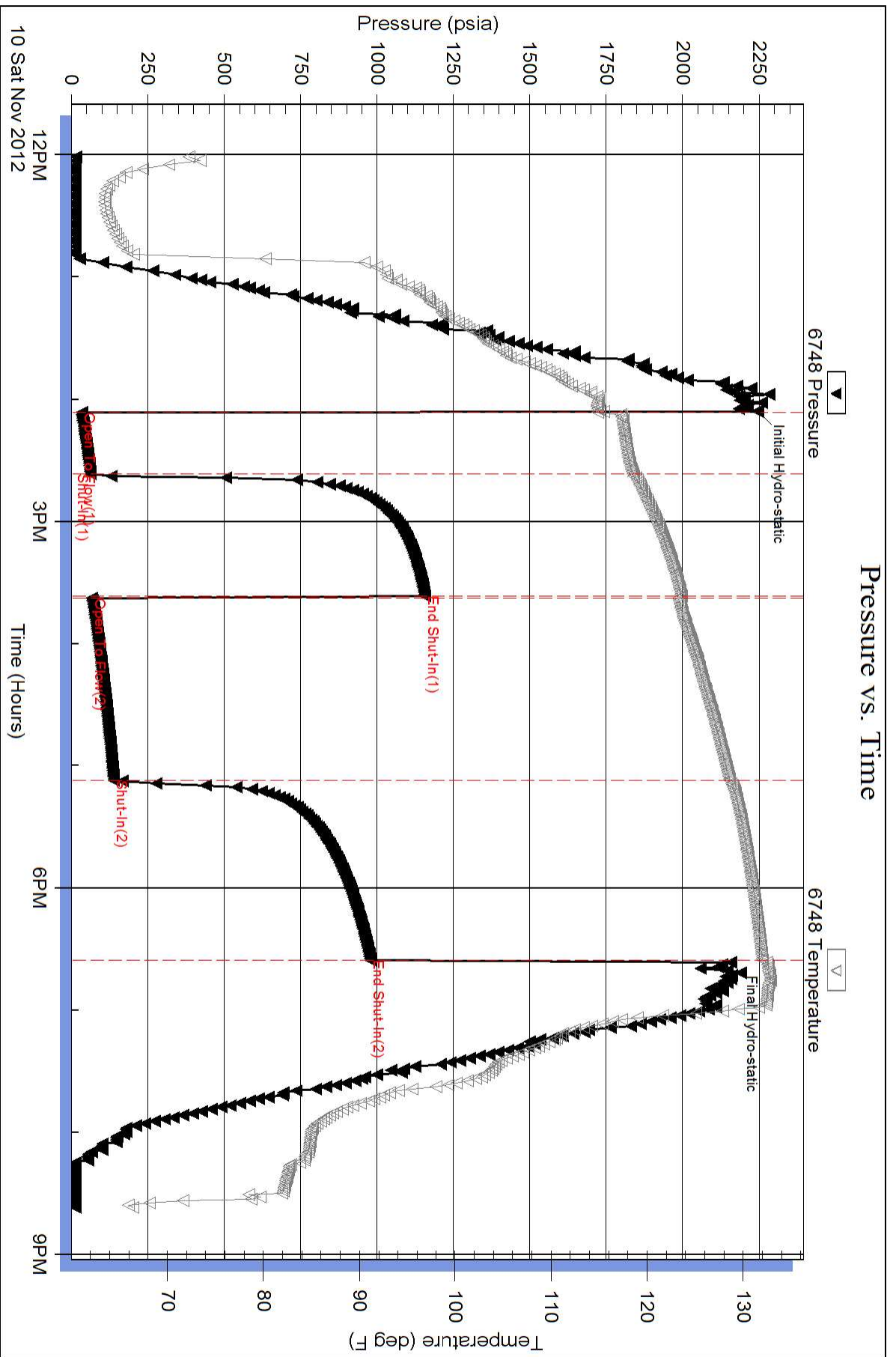
Num Gas Bombs: 0

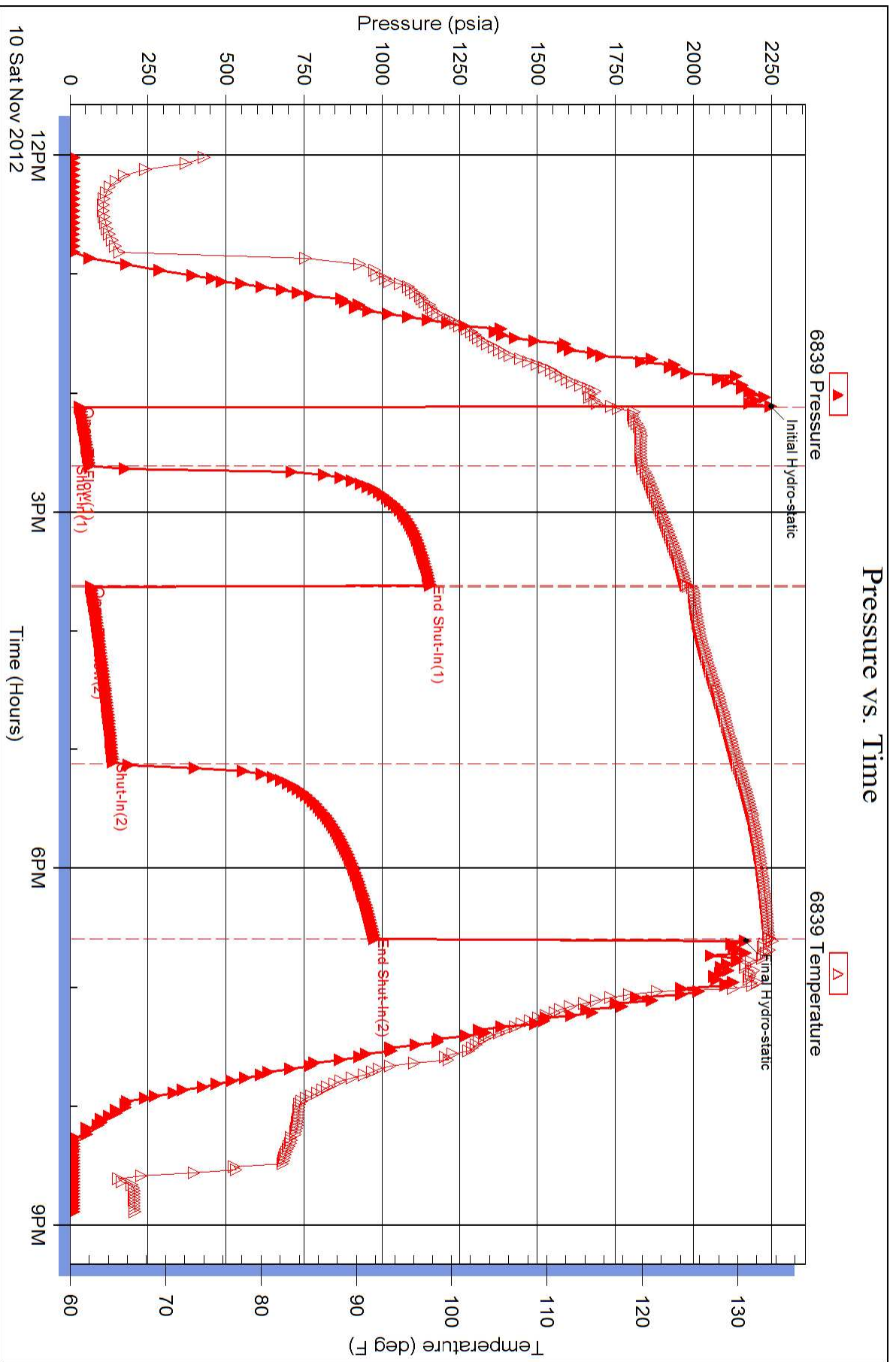
Serial #:

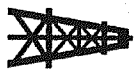
Laboratory Name:

Laboratory Location:

Recovery Comments:







JERRY A. SMITH

CERTIFIED PETROLEUM GEOLOGIST

GEOLOGIST'S REPORT

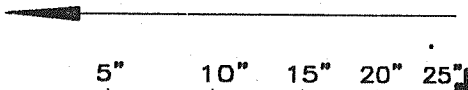
DRILLING TIME and SAMPLE LOG

COMPANY: PICKRELL DRILLING COMPANY, INC		ELEVATIONS	
LEASE: #1 CHAPMAN "D"		K.B. 2526	
FIELD: CHAPMAN		D.F. 2524	
LOCATION: 1200' FNL & 1830' FEL		G.L. 2519	
SEC. 35	TWSP. 15	RNG. 26 W	Measurements Are All From: KB
COUNTY: GOVE	STATE: KANSAS		
CONTRACTOR: COMPANY TOOLS, RIG #10		CASING	
SPUD: 10/31/12	COMP. 11/11/12	SURFACE: 8 5/8 " @ 215'	
RTD. 4500	LTD. 4506	PRODUCTION: 4 1/2" @ 4480'	
MUD UP: 3375	TYPE MUD: CHEMICAL	ELECTRICAL SURVEYS	
API No. 15-063-22050		PIONEER: FDC-CNL, DIL, MICRO	
SAMPLES SAVED FROM: 3500		TO: RTD	
DRILLING TIME KEPT FROM: 1800/3500		TO: 2000/RTD	
SAMPLES EXAMINED FROM: 3500		TO: RTD	
GEOLOGICAL SUPERVISION FROM: 3495		TO: RTD	
GEOLOGIST ON WELL: JERRY A. SMITH			
FORMATION TOPS	LOG	SAMPLES	
ANHYDRITE	1943 (+583)	1947 (+579)	
HEEBNER	3766 (-1240)	3762 (-1236)	
LANISING	3809 (-1283)	3804 (-1278)	
STARK	4048 (-1522)	4045 (-1519)	
FT. SCOTT	4314 (-1787)	4306 (-1780)	
CHEROKEE	4338 (-1812)	4332 (-1806)	
MISSISSIPPIAN	4413 (-1887)	4407 (-1881)	
DOLOMITE Ø	4419 (-1893)	4412 (-1886)	

LEGEND

Anhydrite	Salt	Sandstone	Shale	Carb sh	Limestone	Ool.Lime	Chert	Dolomite

DRILLING TIME IN MINUTES
PER FOOT
Rate of Penetration Increases



LITHOLOGY	DEPTH	SAMPLE DESCRIPTIONS	REMARKS
			NO GAS DETECTOR DST'S (3): SUPERIOR MUD: MUD-CO
			S.H.T.'S: 226' 3/4° 2254' 1/4° 774' 3/4° 2723' 3/4° 1223' 3/4° 4234' 3/4°

1225 7/4 4554 7/4
1754' 1/2° 4500' 3/4°

VERT. LOG SCALE: 2" = 100'

1800

50

1900

50

2000

3500

ANHYDRITE
1947 (+579) SMPL
1943 (+583) LOG
B/ANHYDRITE
1977 (+549) SMPL
1979 (+547) LOG

VERT. LOG SCALE: 5" = 100'

SH - GY, GN, RD. GRDY.

SH - AA w/ SCATT Lr GY,
FX, DSE LM.

SH & LM - AA w/ ABD
DK GY/ERN LM - FX
DSE.

LM - GRDY Lr GY, FX,
DSE - GRDY w/
ABD DK GY SH,
SCATT GY - LN LM - FX
FR COMAD Ø. NS.

ABD, DK GY, GY - GN, RD
GY - LN LM - FX,
FX, DSE.

LM - M GY, GY - LN, FX.
No Vis Ø.



3600

20

40

60

80

3700

20

40

60

80

3800

LM - CRM, Lt Gy, Lt Tan
FX DSE. No Vis ϕ .
SUB - CHKY IN PT.

LM - CRM, Lt Gy, FX
Foss. Scatt Pa Foss
Mud ϕ . NS.

LM - M Gy, Gy - Tan, FX
DSE. CHKY IN PT.
SH. Scatt In Gy ϕ Rd
SH.

LM - AA. GRITTY. PR
SCATT VGY ϕ . NS.

LM - CRM, Lt Gy, Gy -
Tan, FX DSE - SUB
CHKY.

LM - AA. / SCATT WH
SET CHK FROM ABOVE

LM - Lt - M Gy, Gy - Tan,
FX. DSE. GRITTY IN PT.

LM - AA. B'CMING
CHKY.

LM - AA. Spiky Foss.
No Vis ϕ . Mud WH
CHK.

LM - AA. CHKY.

LM - AA. CHKY.

LM - Lt - M Gy, FX. DSE.
CHKY.

LM - AA. w/ PR. SCATT
VGY ϕ . NS.

LM - AA. CHKY.

LM - AA. CHKY.

SH - BLK, CARB.

LM - Gy - Tan, FX. DSE.

SH - M Gy, Gy - Tan, PYR
IN PT.

LM - Lt - M Gy, FX. Foss
IN PT. No Vis ϕ . CHKY
IN PT.

LM - CRM, M Gy, Gy - Tan, FX.
Spiky Foss. DSE. No
Vis ϕ . SCATT CHK.

SH - M - DR Gy.

LM - CRM, Lt Gy, FX. DSE
SUB - CHKY. w/ CRAM
CRM, Lt Gy. CRAM. SHP.
DSE.

LM - AA. SCATT PR. Mud
 ϕ . NS.

HEEBNER
3762 (-1236) SMPL
3766 (-1240) LOG

LANSING
3804 (-1278) SMPL
3809 (-1283) LOG

MUD @ 3808':
8.85 WT. 50 VIS. 7.0 FILT.

2000 CHLOR, 1# LCM

DST #1: 4260 - 4334
 30-30-10-0
 IF: WK BLO FOR 10 MIN,
 THEN WK, INTERMITTANT
 BLO
 ISI: No RETURN
 FF: No BLO - FLUSHED
 TOOL - No HELP

RECOVERY:
 5' DRILLING MUD

SIP'S: 78#
 FP'S: 63-64/65-65#
 HP'S: 2155-2113#
 BHT: 120° F

DST #2: 4380-4425
 30-60-90-90

IF: 4' BLO
 ISI: No RETURN
 FF: 7 1/2" BLO
 FSI: No RETURN

RECOVERY:
 100' GIP
 30' CO
 50' HOCM (45% O,
 55% M)
 41° API GRAVITY

SIP'S: 1132-918#
 FP'S: 48-56/61-73#
 HP'S: 2212-2045#
 BHT: 130° F

LM-AA. B'CMING DSE.

LM-CRM, LT GY, LT TN, FX, DSE.
PR - SPSSY FASS. DSE.

LM-AA w/ SCATT. PR
FASS NHD Q. NS.

LM-LT GY, LT TN, FX, PR
FR VGY Q. NS.

SH-M -> DK GY.

LM-LT -> M TN, F -> MX
PR -> FR VGY Q. NS.

LM-M GY, FX, DSE.
SCATT. CNT - CRM, LT GY,
OPQ, SHP, DSE.

LM-CRM, FX, CHKY.
SPSSY FASS.

LM-AA w/ SCATT. CNT -
GY, TN, OPQ, SHP, DSE.

SH-DK GY, LT TN, FX.
LM-LT GY, LT TN, FX.
DSE.

LM-AA, CHKY.

LM-LT GY, LT TN, FX, DSE
-> CHKY, TN, OPQ, SHP,
DSE CNT.

LM-LT -> M GY, LT
TN, FX, GY, OPQ, SHP,
Q. NS. SCATT. NHD CHK.

LM-AA.

LM-CRM, LT TN, FX, DSE
-> SCATT. OPQ, Q. NS.

LM-AA, INC. IN M ->
DK GY & DK RB SH.

LM & SH-AA.

SH-BLK, CARB.

LM-GY, TN, FX, DSE.

LM-CRM, LT GY, FX, DSE
-> SUB-CHK. w/ SCATT.
CNT - LT GY, OPQ, SHP,
DSE. CPL. ISOLATED VEG
w/ DK STN. V WY, FINEING
OPQ.

ADD GY, GN, RD SH.

LM-CRM, LT GY, LT TN, DSE
FX, OPQ IN PR, DSE
PR INT - OOL Q.
CPL. PA'S BROKE DR TO.
No OPQ. GY, PA'S w/
PR VGY Q & DK STN.

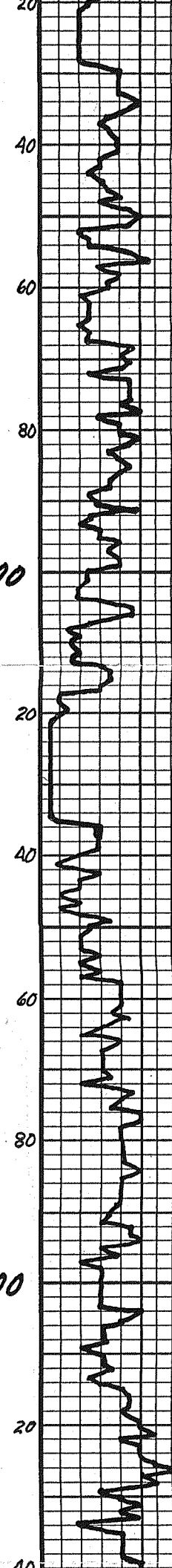
LM-CRM, LT GY, FX.
DSE.

ADD GY, GN, RD SH.
CALC IN PR.

LM-CRM, LT GY, LT TN,
FX, DSE -> SUB-CHK.

3900

4000



I

U



4100

4200

w/ CNT - 10 GY. OPA, SNO. DSE.
 SH - BLK, CARB.
 ADD GY, GY, RD, BLK SH & GY, FX, DSE
 LM - M GY GY, TD, FX. TO V GY G. G. DOOR. FR -> GA SNO F GO.
 LM - CRM, LK -> M GY. FX. DSE -> SUB - CHKY. TO M GY OPA, SNO DSE CNT. SH - BLK, CARB.
 PREDOM SH - GY, GN, BK, RD, w/ SEAT CRK GY, DSE LM. TO CNT - AA.
 LM - LK -> M GY. FX. DSE -> SUB - CHKY.
 LM - AA. BIRMING SHLY.
 SH - LK -> M - DK GY. GY - GN, BLK, RDISH - BRN.
 SH - AA.
 LM - CRM, SUB - CHKY. W/ LM - LK -> M - DK GY. FX. DSE.
 SH - M -> DK GY, GY - GN.
 LM - LK -> M - DK GY. FX. DSE. SUB - CHKY IN P.
 SH - BLK, CARB.
 VARICOL SH - RD, MAROON, BRWN, GY, GN, BK, w/ SEAT CRK & GY, FX, DSE LM.
 VARICOL SH & LM - AA.
 VARICOL SH & LM - AA.
 VARICOL SH & LM - AA.
 PREDOM LM - CRM, SUB - CHKY -> LK -> M GY, FX, DSE. W/ SH - GY, GY - GN, MAROON.
 LM w/ SH - AA.
 SH - DK GY -> BLK w/ M GY & GY - GN SH.
 LM - LK -> M GY, GY - TD, FX, DSE. CHKY IN P.
 LM - AA.

STARK
 4045 (-1519) SMPL
 4048 (-1522) LOG

MUD @ 4115':
 9.3 WT, 60 VIS, 6.4 FILT,
 2000 CHLOR, 1# LCM

DST #3: 4425-35
 30-60-90-90
 IF: BOB IN 18 MIN.
 ISI: No RETURN
 FF: BOB IN 14 MIN.
 FSI: No RETURN
 RECOVERY:
 500' GIP
 240' CGO (15% G, 85% O)
 45' HM & GCO (25% G, 57% O,
 15% M, 3% W)
 45' HM & GCO (18% G, 60% O,
 8% M, 14% W)
 41° API GRAVITY
 5000 CHLORIDES
 SIP'S: 1155-976#
 FP'S: 32-63/67-138#
 HP'S: 2248-2165#
 BHT: 133° F

PAWNEE
 4246 (-1720) SMPL
 4249 (-1723) LOG

4300

4400

D
S
T
#1

D
S
T
#2

#3

Lm - GY - MGY, GY - TH.
FX. DSE. No V.S. Q.
M - DR GY, GY - BK
CALC SH.

Lm of CALC SH - AA.

Lm of SH - AA.

SH - DR GY, GRITTY
& Foss IN Pt.

SH - BLK, CARB.

Lm - Cem. GY - MGY, FX
JESLY Foss. DSE, SIX
P.S. GY - TH (w/ P) PR
V.S. / Foss. No. Q. DR
STN IN Q. V.S. DR. F.O.
No OOR.

Lm - GY - MGY, GY - TH.
FX. DSE. No V.S. Q.
No OOR.

Lm - AA, ONE PIECE w/ P
V.S. Q. DR STN. WK
OOR.

SH - GY, GY - GY, DR. R.
w/ CEM, FX, DSE. CM.

Lm - Cem. GY - MGY -
TH. FX. DSE.

Lm - Cem. FX. DSE
-> SUB-CALC.

Lm - AA w/ calc. IN M
GY, GY - GY SH.

Lm of SH - AA.

Lm - AA w/ GY - MGY - DR
GY, GY - GY, DR. R. MGY -
GGY. SH. VARKOL. OOR
LHT.

VARICOL SH (SOME GRITTY),
VARICOL LHT (P.B. DRAM,
YELLOW), Cem, GY, TH. CM.

VARICOL LHT, SH. CEM. P.S.
w/ V.S. Q. BK. STN. WK
OOR.

Dolo - GY - MGY, GY - TH. FX. PR V.S.
Q. OOR. GO SHO F.O. &
GAS BUBB. SCAT. MGY. OOR.

NEA CHT - GY. STN. WK
Dolo - GY - MGY, GY - TH. FX. FULLY
SUCRO. FR - GO V.S. Q. STR. OOR.

GO SHO F.O. & GAS BUBB.
Dolo - GY - GY - TH. FX. SUCRO.
FR - GO V.S. Q. STR. OOR.

FR - GO SHO F.O. & GAS BUBB.
Dolo - GY - MGY, GY - TH. FX.
SUCRO. SCAT. FR V.S. Q.

FR OOR. PR SHO F.O.
Dolo - Cem. GY - MGY, FX.
DSE -> PR. SCAT. V.S.
Q. PR OOR. - No V.S.

SHO.
Dolo - GY - MGY, Cem. FX.
DSE. No V.S. Q. NS. WK,
FREETING OOR.

Dolo - GY, FX. SUCRO. PR ->
FR V.S. Q. W/ V.S. Q. WK ->
FR OOR. GO SHO F.O. &
GAS BUBB.

Dolo - Cem. GY, FX. DSE ->
RARE V.S. Q. No OOR.
FEW P.S. w/ SCAT. BLK
STN.

FT. SCOTT
4306 (-1780) SMPL
4314 (-1787) LOG

CHEROKEE
4332 (-1806) SMPL
4338 (-1812) LOG


PIPE STRAP @ 4334':
STRAP 4351.52
BOARD 4345.93
LONG 5.59

CONGLOMERATE
4395 (-1869) SMPL
4403 (-1877) LOG

MISSISSIPPIAN 4407 (-1881) SMPL
4413 (-1887) LOG

DOLOMITE POROSITY
4412 (-1886) SMPL
4419 (-1893) LOG

MUD @ 4455':
9.25 WT, 67 VIS, 10.4 FILT,
5100 CHLOR, TR LCM

LITHOLOGY	4500	<i>Dolog - Cem. Lt. G. F. DSE -></i> <i>BARE VGT. D. No. ODOB. No.</i> <i>SHO. FEW PGS W/ CHK.</i> <i>Dolog - AA. NK ODOB. FEW</i> <i>PGS w/ G.D. SHO. F.D.</i>		TOTAL DEPTH 4500 (-1974) ROTARY 4506 (-1980) LOG
	DEPTH	5" 10" 15" 20" 25" DRILLING TIME MINUTES/FOOT  Rate of Penetration Increases	SAMPLE DESCRIPTIONS	REMARKS

COMPANY: PICKRELL DRILLING COMPANY, INC		ELEVATION: 2526 KB		
LEASE: #1 CHAPMAN "D"				
LOCATION: 1200' FNL & 1830' FEL	SEC 35	TWP 15	RGE 2W	
COUNTY: GOVE	STATE: KANSAS			

ALLIED OIL & GAS SERVICES, LLC 053591

Federal Tax I.D.# 20-5975804

REMIT TO P.O. BOX 31
RUSSELL, KANSAS 67665

SERVICE POINT: Chapman D-1
General Service

DATE <u>11-12</u>	SEC. <u>1</u>	TWP. <u>1</u>	RANGE <u>1</u>	CALLED OUT	ON LOCATION	JOB START <u>1:00 AM</u>	JOB FINISH <u>2:00 AM</u>
LEASE <u>Chapman D-1</u>		WELL # <u>1</u>		LOCATION <u>WICCA KS 1W 5N</u>		COUNTY <u>Wichita</u>	STATE <u>KS</u>
OLD OR (NEW) (Circle one)				W Into			

CONTRACTOR Pickrell Drilling #10 OWNER _____

TYPE OF JOB 3W 6 3/4

HOLE SIZE 12 1/4 T.D. _____

CASING SIZE 6 5/8 DEPTH 230

TUBING SIZE _____ DEPTH _____

DRILL PIPE 4 1/2 DEPTH _____

TOOL _____ DEPTH _____

PRES. MAX _____ MINIMUM _____

MEAS. LINE _____ SHOE JOINT _____

CEMENT LEFT IN CSG. 15 BT

PERFS. _____

DISPLACEMENT 13,67 lbs fresh water

CEMENT AMOUNT ORDERED 1.50 SKS Class A

3 Pcc 2.9 pcc

COMMON	<u>150</u>	@	<u>17.90</u>	<u>2685.00</u>
POZMIX		@		
GEL	<u>3</u>	@	<u>23.40</u>	<u>70.20</u>
CHLORIDE	<u>5</u>	@	<u>64.00</u>	<u>320.00</u>
ASC		@		
HANDLING	<u>162.09</u>	@	<u>2.48</u>	<u>401.98</u>
MILEAGE	<u>7.4 X 30</u>	X	<u>2.60</u>	<u>577.20</u>
TOTAL				<u>4,054.38</u>

EQUIPMENT

PUMP TRUCK CEMENTER Pugger Chambers 1

224 HELPER Josh F Moore 1

BULK TRUCK # 3611 DRIVER Steve Monahan 3

BULK TRUCK # _____ DRIVER _____

REMARKS:

Best from Gordon with Pugger

plug 13.67 lbs fresh water

plug 1.50 SKS Class A 3 pcc 2.9 pcc

displace 13.67 lbs fresh water

cement disp 13.67 lbs

plug down 1:30 AM

RTM Pcc

SERVICE

DEPTH OF JOB	<u>230</u>			
PUMP TRUCK CHARGE			<u>1512.25</u>	
EXTRA FOOTAGE		@		
MILEAGE	<u>HVM 30</u>	@	<u>7.70</u> <u>231.00</u>	
MANIFOLD		@		
	<u>LVM 30</u>	@	<u>4.40</u> <u>132.00</u>	
TOTAL				<u>1875.25</u>

CHARGE TO: Pickrell Drilling

STREET _____

CITY _____ STATE _____ ZIP _____

To: Allied Oil & Gas Services, LLC.

You are hereby requested to rent cementing equipment and furnish cementer and helper(s) to assist owner or contractor to do work as is listed. The above work was done to satisfaction and supervision of owner agent or contractor. I have read and understand the "GENERAL TERMS AND CONDITIONS" listed on the reverse side.

PRINTED NAME X Mike Kenn

SIGNATURE X Mike Kenn

Thank you!

PLUG & FLOAT EQUIPMENT

_____	@	_____
_____	@	_____
_____	@	_____
_____	@	_____
_____	@	_____
TOTAL _____		
SALES TAX (If Any)	<u>247.55</u>	
TOTAL CHARGES	<u>\$5929.63</u>	
DISCOUNT	<u>25% 1,482.40</u>	IF PAID IN 30 DAYS
<u>\$4,447.23</u>		



CHARGE TO: **PERRELL DRUG CO.**
 ADDRESS:
 CITY, STATE, ZIP CODE:

TICKET No. 23398

PAGE 1 OF 2

SERVICE LOCATIONS: 1. **Ness City, KS**

WELL/PROJECT NO: **D-1**

LEASE: **CHADMAN**

COUNTY/PARISH: **GOVE**

STATE: **Ks**

CITY: **LOCATION**

TICKET TYPE: SERVICE SALES

CONTRACTOR: **Co. Tools**

RIG NAME/NO.:

WELL TYPE: **Oil**

WELL CATEGORY: **Development**

JOB PURPOSE: **4 1/2" 2-STAGE backstroke**

WELL PERMIT NO.:

WELL LOCATION: **N/O Drags**

DATE: **11-11-12**

OWNER: **same**

ORDER NO.:

PRICE REFERENCE	SECONDARY REFERENCE/ PART NUMBER	ACCOUNTING			DESCRIPTION	QTY.	UM	QTY.	UM	UNIT PRICE	AMOUNT
		LOC	ACCT	DF							
575		1			MILEAGE # 115	40	MI			6.00	240.00
579		1			Pump Charge - 2stage	1	308	4478	FT	1850.00	1850.00
580		1			ADDITIONAL HOSES - 3/4" CURTAIN	0	105			200.00	
221		1			LEAD KEY	4	64			25.00	100.00
281		1			MUDFLASH	500	64			1.25	625.00
402		1			CENTRALIZERS	5	EA	4 1/2"		65.00	325.00
403		1			CEMENT BASKETS	1	EA			250.00	250.00
407		1			TRUSSER FRONT SHOE w/ Ayno Fil	1	EA			300.00	300.00
408		1			DN TOOL w/ Pink Set Tool # 60	1	EA	1955	FT	2700.00	2700.00
417		1			DN VATCH DOWN PLUG & BATHIE	1	EA			200.00	200.00

LEGAL TERMS: Customer hereby acknowledges and agrees to the terms and conditions on the reverse side hereof which include, but are not limited to, **PAYMENT, RELEASE, INDEMNITY**, and **LIMITED WARRANTY** provisions.

MUST BE SIGNED BY CUSTOMER OR CUSTOMER'S AGENT PRIOR TO START OF WORK OR DELIVERY OF GOODS

DATE SIGNED: **11-11-12** TIME SIGNED: **1000** A.M. P.M.

REMIT PAYMENT TO:
SWIFT SERVICES, INC.
 P.O. BOX 466
 NESS CITY, KS 67560
 785-798-2300

SURVEY

OUR EQUIPMENT PERFORMED WITHOUT BREAKDOWN?

WE UNDERSTOOD AND MET YOUR NEEDS?

OUR SERVICE WAS PERFORMED WITHOUT DELAY?

WE OPERATED THE EQUIPMENT AND PERFORMED JOB CALCULATIONS SATISFACTORILY?

ARE YOU SATISFIED WITH OUR SERVICE? YES NO

CUSTOMER DID NOT WISH TO RESPOND

PAGE TOTAL	#2	10608.98
TOTAL		18,250.07

SWIFT OPERATOR: **Wayne Wilson** APPROVAL: _____

CUSTOMER ACCEPTANCE OF MATERIALS AND SERVICES: The customer hereby acknowledges receipt of the materials and services listed on this ticket.

Thank You!



Switzerland, Inc.

PO Box 466
Ness City, KS 67560
Of: 785-798-2300

TICKET CONTINUATION

TICKET No. 23398

CUSTOMER
Pizzarello Dale, Co.

WELL
CHAPMAN D-1

DATE
11-11-12

PAGE 2 OF 2

PRICE REFERENCE	SECONDARY REFERENCE/ PART NUMBER	ACCOUNTING			TIME	DESCRIPTION	QTY		UNIT		UNIT PRICE	AMOUNT
		LOC	ACCT	DF			QTY	UM	QTY	UM		
325		1				STANDARD Cement	75	SBS			13.50	1012.50
326		1				60/40 Pozmix (290cel)	125	SBS			11.00	1375.00
330		1				SWIFT MUTE - DENSITY STAMPS	325	SBS			16.50	5362.50
276		1				FLOCELE	81	WBS			2.00	162.00
279		1				BSTONDE GEL	2	SBS	200	WBS		N/C
283		1				SALT	350	WBS			20	701.00
285		1				CFR-1	100	WBS			4.00	400.00
290		1				D-ADR	5	WBS			35.00	175.00
581		1				SEVICE CHARGE					2.00	1050.00
583		1				MILEAGE CHARGE					1.00	1001.98
						TOTAL WEIGHT	500	99				
						LOADED MILES	40					
						CUBIC FEET	525					
						TON MILES	1001	98				
CONTINUATION TOTAL												10608.98

JOB LOG

SWIFT Services, Inc.

DATE 11-11-12 PAGE NO.

CUSTOMER PECKDELL DRUG Co. WELL NO. D-1 LEASE CHAPMAN JOB TYPE 4 1/2" 2-STAGE LONGSTROKE TICKET NO. 23398

CHART NO.	TIME	RATE (BPM)	VOLUME (BBL)	PUMPS		PRESSURE (PSI)		DESCRIPTION OF OPERATION AND MATERIALS
				T	C	TUBING	CASING	
	1000							ON LOCATION
	1045							START 4 1/2" CASING IN WELL
								TD - 4500' SET e 4478
								TP - 4481' 4 1/2" # 10.5
								SJ - 25'
								CENTRALISERS - 1, 2, 3, 4, 5, 9
								CMT BSKTS - 60
								DV TOOL e 1955 TOP # 60
	1220							DROP BALL - CIRCULATE
	1305	6	12		✓	400		PUMP 500 GAL MUD FLUSH
	1307	6	20		✓	400		PUMP 20 BBL KCL - FLUSH
	1315	4 1/2	29		✓	200		MIX CEMENT LD - 12.5 60/40 e 13.6 PPG
		4 1/2	16		✓	100		TL - 75 STANDARD e 15.8 PPG
	1327							WASH OUT PUMP - LINES
	1327							RELEASE 1ST STAGE LATCH DOWN PLUG
	1330	7	0		✓			DISPLACE PLUG
	1340	6 1/2	70.9			1500		PLUG DOWN - PSE UP LATCH IN PLUG
	1342					OK		RELEASE PSE - HELD
	1345							DROP DV OPENING PLUG
	1358				✓	1300		OPEN DV TOOL - CIRCULATE
	1400	6	20		✓	300		PUMP 20 BBL KCL - FLUSH
	1405		7					PLUG RH (30SKS)
	1410	6	165		✓	200		MIX CEMENT 295 SKS SMD e 11.2 PPG
	1443							WASH OUT PUMP - LINES
	1443							RELEASE DV CLOSED PLUG
	1445	6	0		✓			DISPLACE PLUG
	1450	5	31.1			1500		PLUG DOWN - PSE UP CLOSE DV TOOL
	1452					OK		RELEASE PSE - HELD
								CIRCULATED 30 SKS CEMENT TO PCT
								WASH TRUCK Way
	1530							JOB COMPLETE

THANK YOU
WAYNE, JASON, JEREMY

SWIFT



P. O. Box 466
Ness City, KS 67560
Off: 785-798-2300



Invoice

DATE	INVOICE #
11/11/2012	23398

BILL TO
Pickrell Drilling Co. Inc. PO Box 375 Ness City, KS 67560

- Acidizing
- Cement
- Tool Rental

TERMS	Well No.	Lease	County	Contractor	Well Type	Well Category	Job Purpose	Operator
Net 30	#1	Chapman D	Gove	Company Tools	Oil	Development	4-1/2" Two-Stag...	Wayne
PRICE REF.	DESCRIPTION				QTY	UM	UNIT PRICE	AMOUNT
575D	Mileage - 1 Way				40	Miles	6.00	240.00
579D	Pump Charge - Two-Stage - 4478 Feet				1	Job	1,850.00	1,850.00
221	Liquid KCL (Clayfix)				4	Gallon(s)	25.00	100.00T
281	Mud Flush				500	Gallon(s)	1.25	625.00T
402-4	4 1/2" Centralizer				5	Each	65.00	325.00T
403-4	4 1/2" Cement Basket				1	Each	250.00	250.00T
407-4	4 1/2" Insert Float Shoe With Auto Fill				1	Each	300.00	300.00T
408-4	4 1/2" D.V. Tool & Plug Set - Top Joint #60 - 1955 Feet				1	Each	2,700.00	2,700.00T
417-5	5 1/2" D.V. Latch Down Plug & Baffle				1	Each	200.00	200.00T
325	Standard Cement				75	Sacks	13.50	1,012.50T
326	60/40 Pozmix (2% Gel)				125	Sacks	11.00	1,375.00T
330	Swift Multi-Density Standard (MIDCON II)				325	Sacks	16.50	5,362.50T
276	Flocele				81	Lb(s)	2.00	162.00T
283	Salt				350	Lb(s)	0.20	70.00T
285	CFR-1				100	Lb(s)	4.00	400.00T
290	D-Air				5	Gallon(s)	35.00	175.00T
581D	Service Charge Cement				525	Sacks	2.00	1,050.00
583D	Drayage				1,001.98	Ton Miles	1.00	1,001.98
	Subtotal							17,198.98
	Sales Tax Gove County						8.05%	1,051.09

Cement Prod String

We Appreciate Your Business!

Total

\$18,250.07