



Pioneer Energy Services

# Radiation Guard Log

15-065-23,861-00-00

API No.

Company **Venture Resources, Inc.**

Well **Pelton-Billips Unit No.1**

Field **Unnamed**

County **Graham** State **Kansas**

Location **SE NW/SE NE  
1950' FNL & 900' FEL**

Other Services  
**NONE**

Sec: **17** Twp: **8 S** Rge: **21 W**

Permanent Datum **Ground Level** Elevation **2030**

Log Measured From **Kelly Bushing** 7 Ft. Above Perm. Datum

Drilling Measured From **Kelly Bushing**

Date **10/20/2012**

Run Number **One**

Depth Driller **3649**

Depth Logger **3620**

Bottom Logged Interval **3619**

Top Log Interval **250**

Casing Driller **8.625 @ 262**

Casing Logger **266**

Bit Size **7.875**

Type Fluid in Hole **Chemical**

Salinity,ppm CL **1600**

Density / Viscosity **9.2 58**

pH / Fluid Loss **10.5 8.0**

Source of Sample **Flowline**

Rm @ Meas. Temp **1.20 @ 74**

Rmf @ Meas. Temp **.90 @ 74**

Rmc @ Meas. Temp **1.62 @ 74**

Source of Rmf / Rmc **Charts**

Rm @ BHT **.79 @ 112**

Operating Rig Time **3 Hours**

Max Rec. Temp. F **112**

Equipment Number **15**

Location **Hays**

Recorded By **D.Kerr**

Witnessed By **Mark Downing**

<<< Fold Here >>>

All interpretations are opinions based on inferences from electrical or other measurements and we cannot and do not guarantee the accuracy or correctness of any interpretation, and we shall not, except in the case of gross or willful negligence on our part, be liable or responsible for any loss, costs, damages, or expenses incurred or sustained by anyone resulting from any interpretation made by any of our officers, agents or employees. These interpretations are also subject to our general terms and conditions set out in our current Price Schedule.

### Comments

Thank you for using Pioneer Energy Services  
www.pioneerenergy.com  
785 625 3858

Bogue KS, 1/2 East, South Into

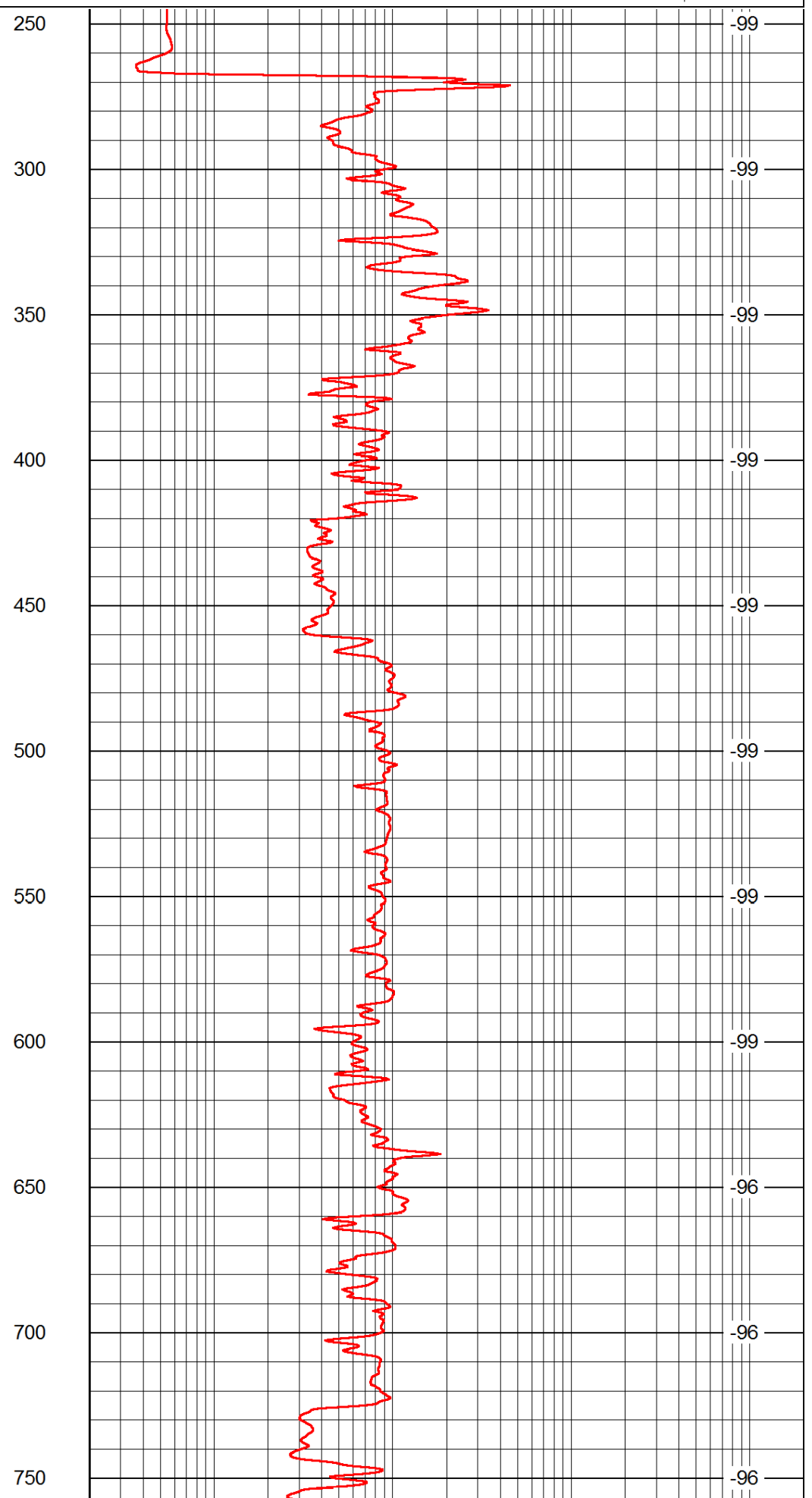
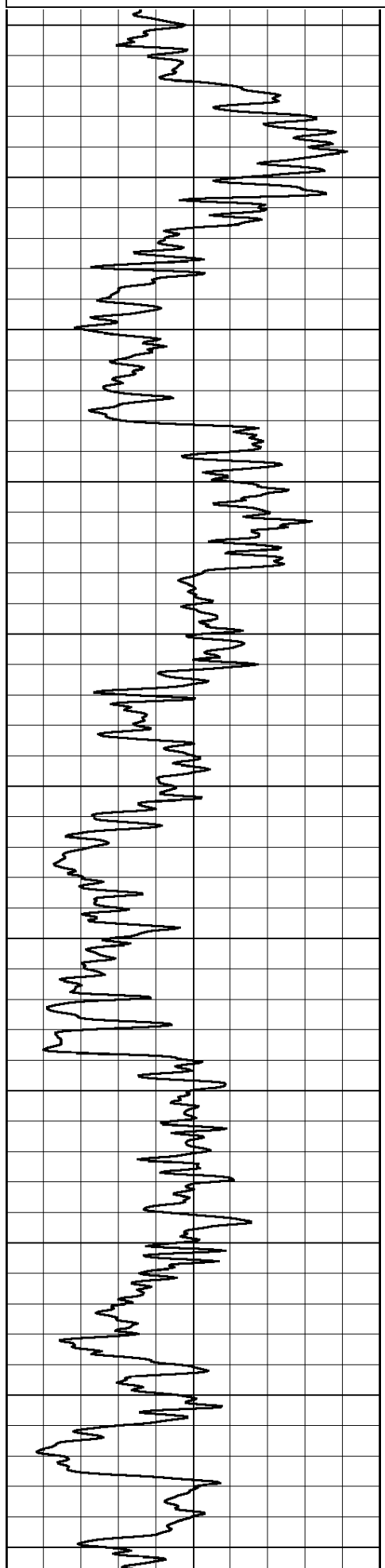
Database File: c:\warrior\data\venture\_pelton-billips unit #1\venture\_pelton\_billips\_1hd.db  
 Dataset Pathname: RAG/ventrag  
 Presentation Format: rag2in  
 Dataset Creation: Sat Oct 20 11:59:59 2012  
 Charted by: Depth in Feet scaled 1:600

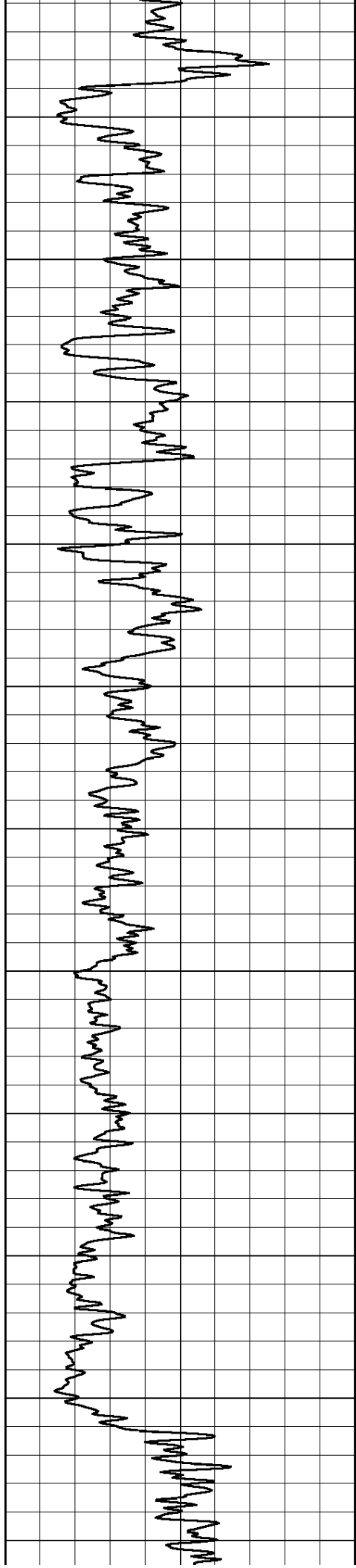
0 Gamma Ray 150

0.2 lgrd

2000

LSPD





800

850

900

950

1000

1050

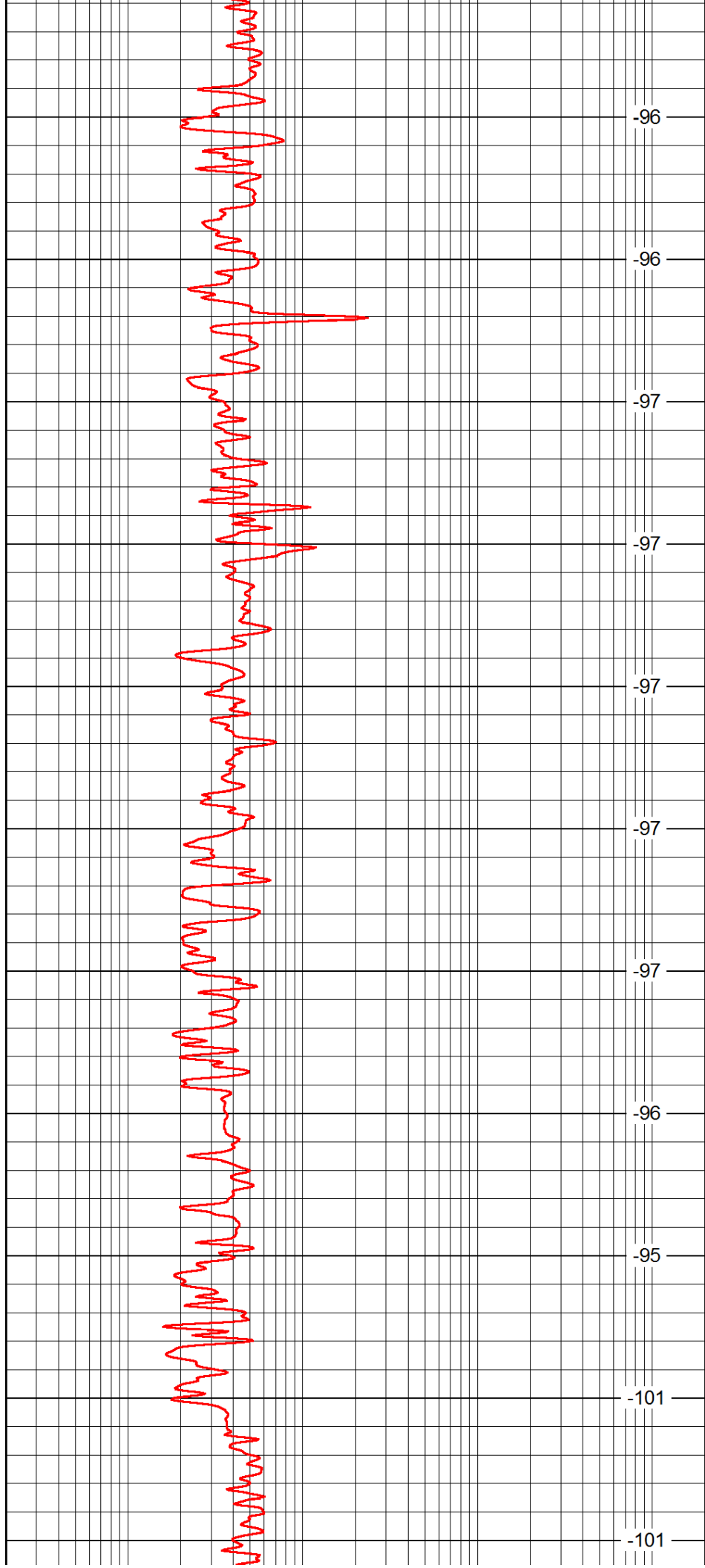
1100

1150

1200

1250

1300



-96

-96

-97

-97

-97

-97

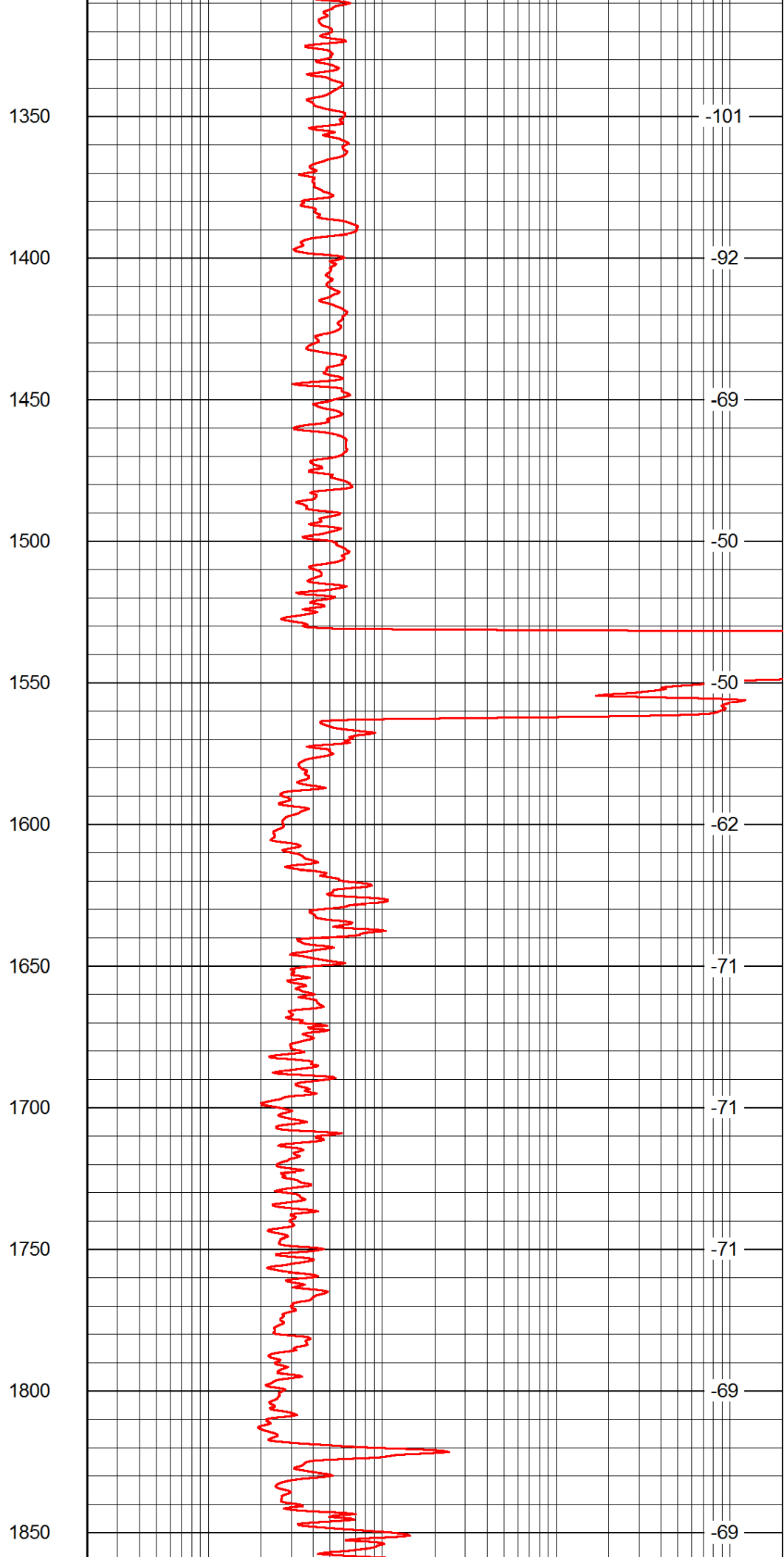
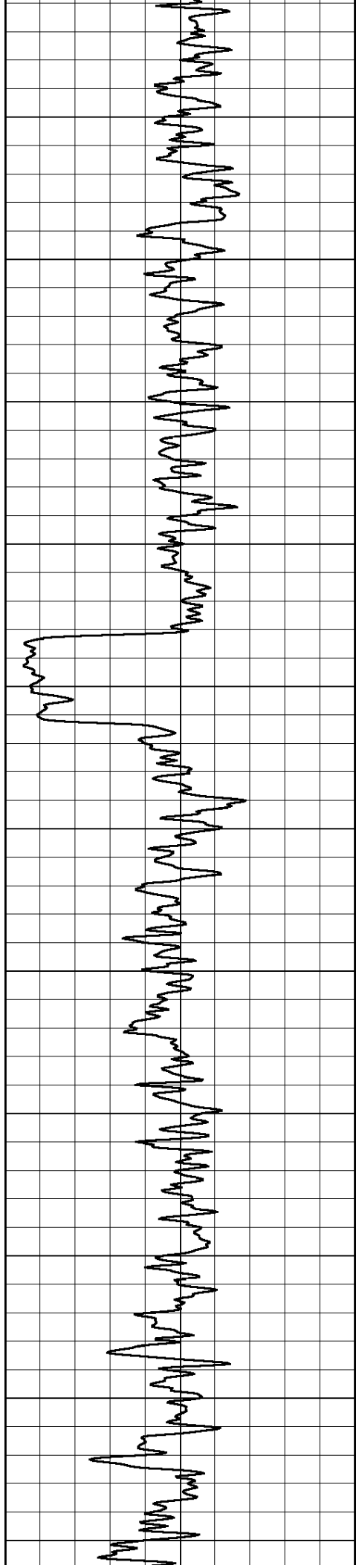
-97

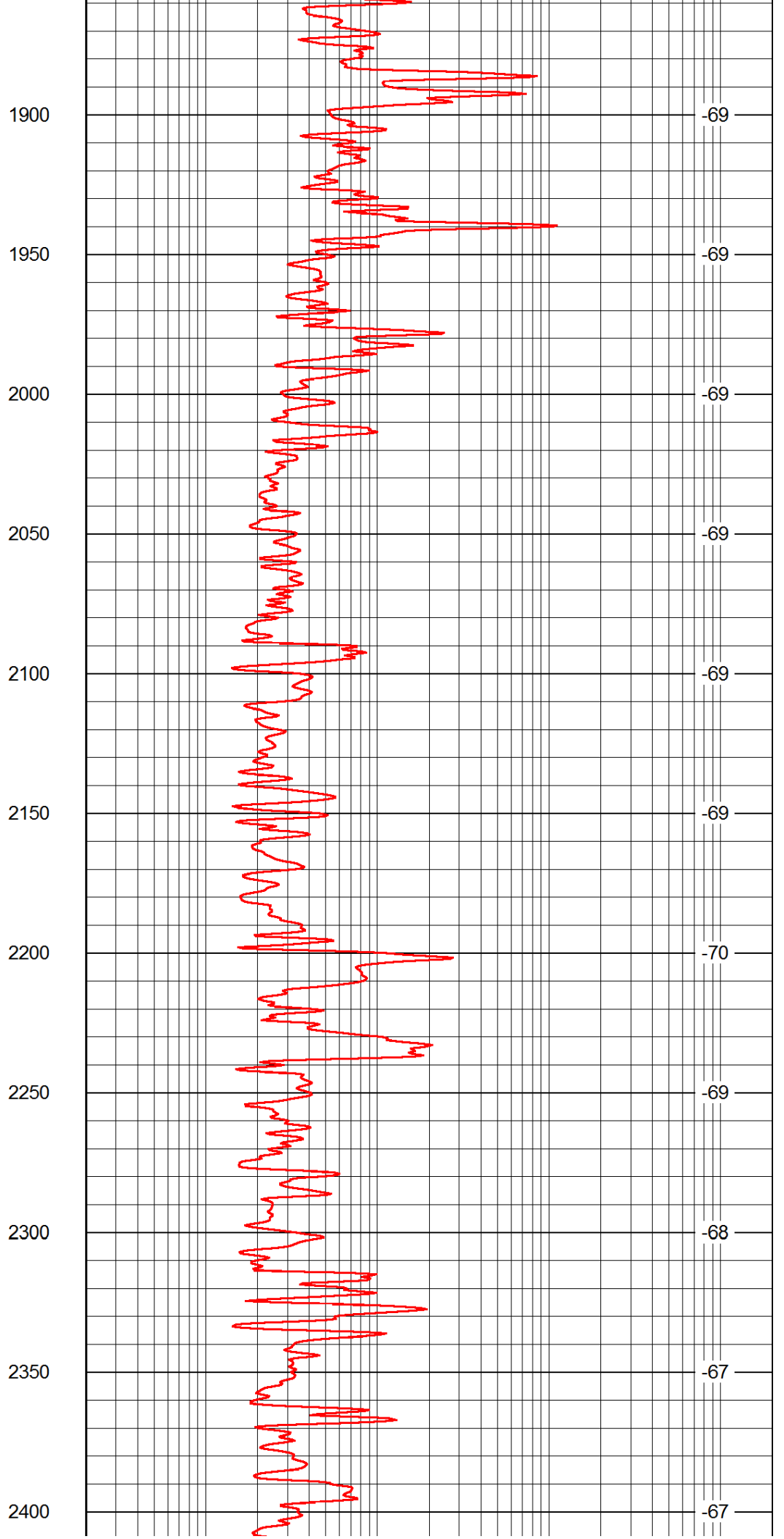
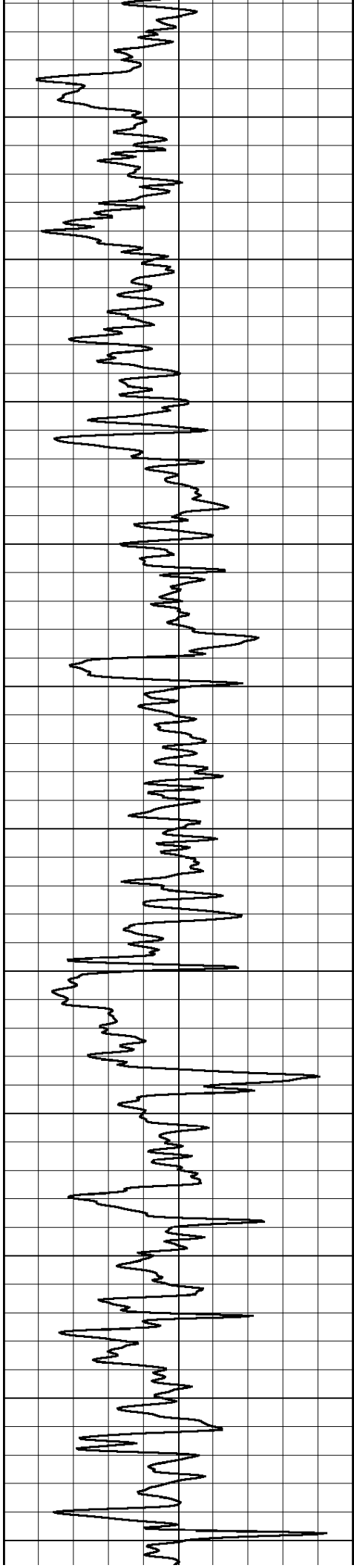
-96

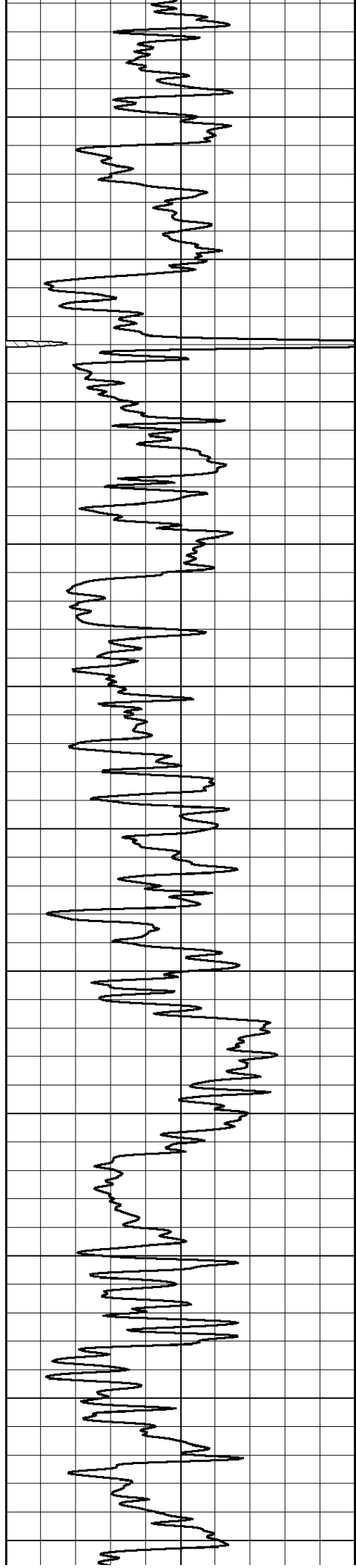
-95

-101

-101







2450

2500

2550

2600

2650

2700

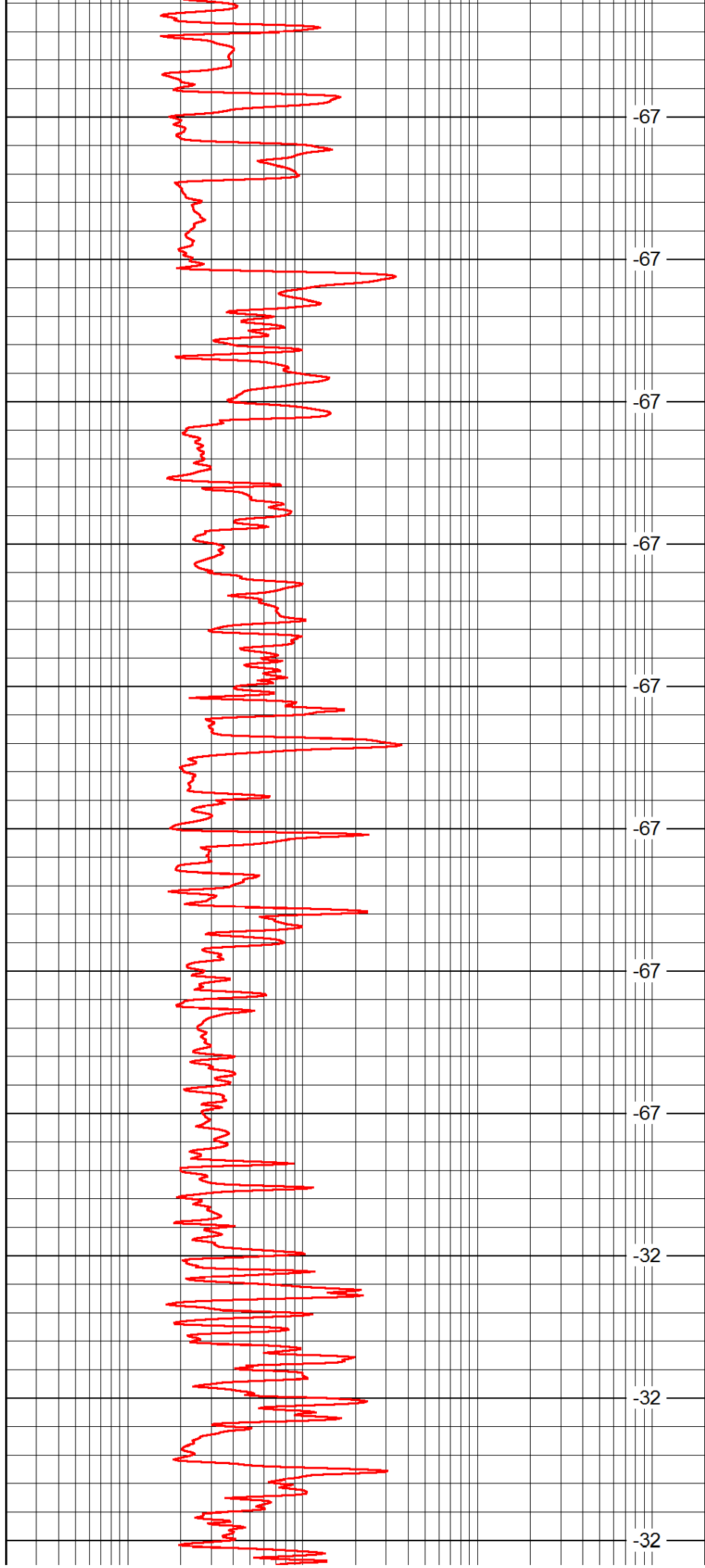
2750

2800

2850

2900

2950



-67

-67

-67

-67

-67

-67

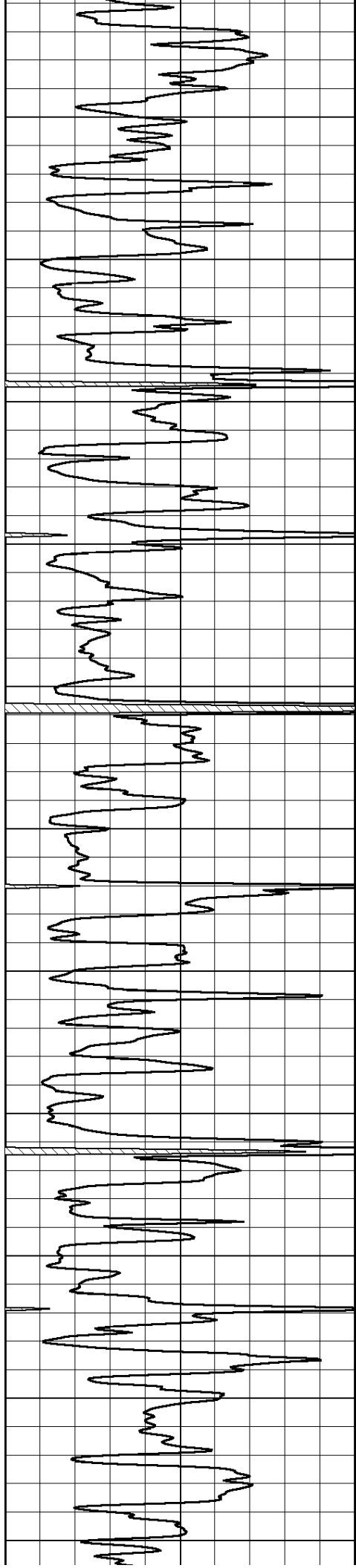
-67

-67

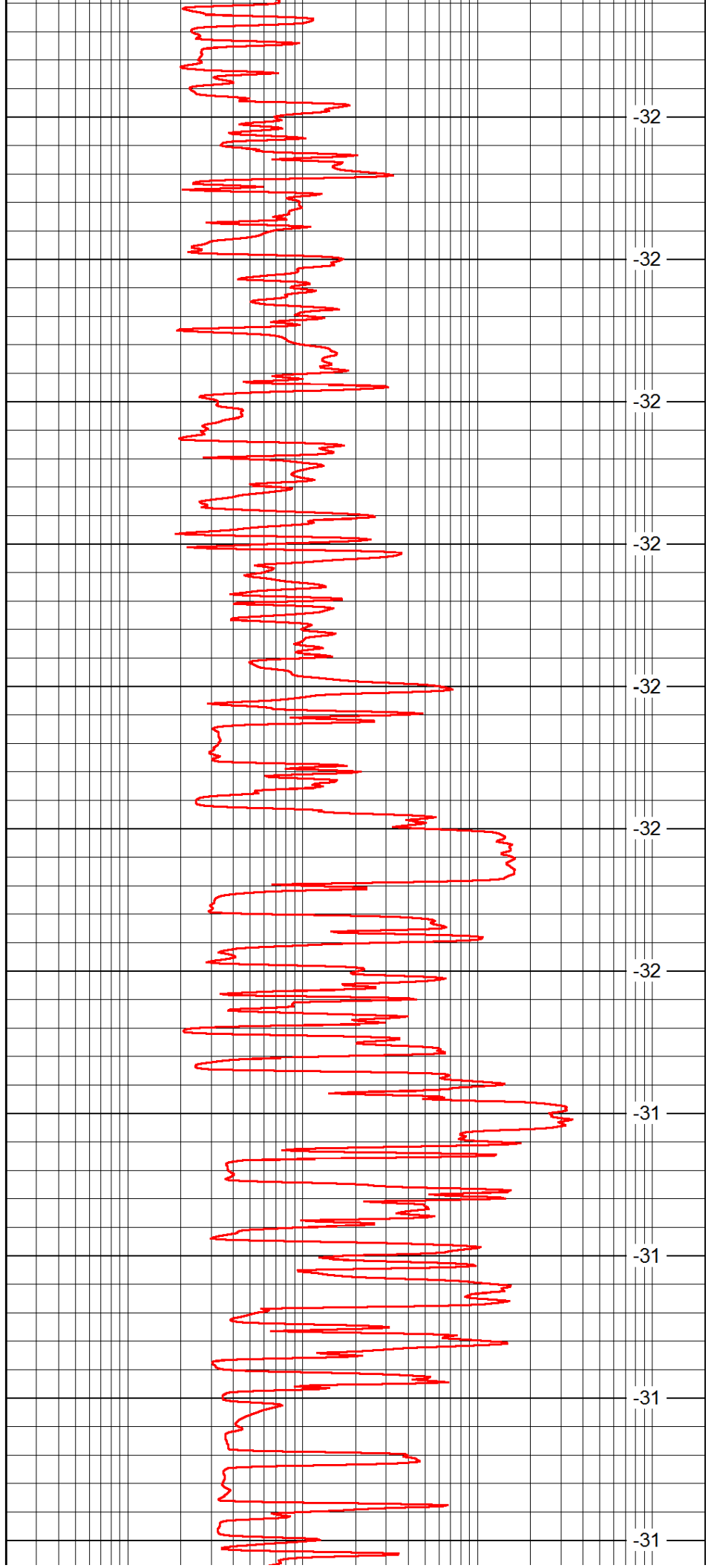
-32

-32

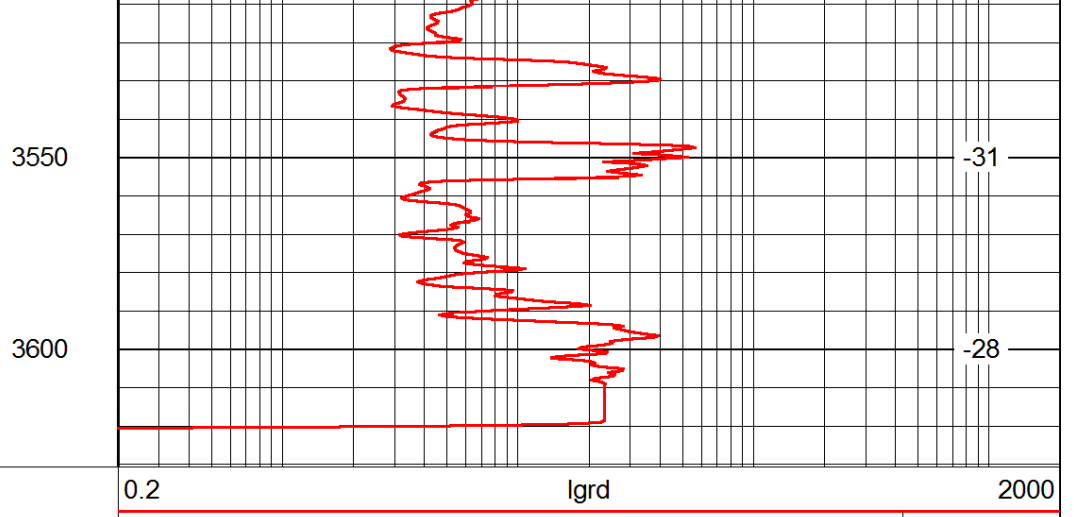
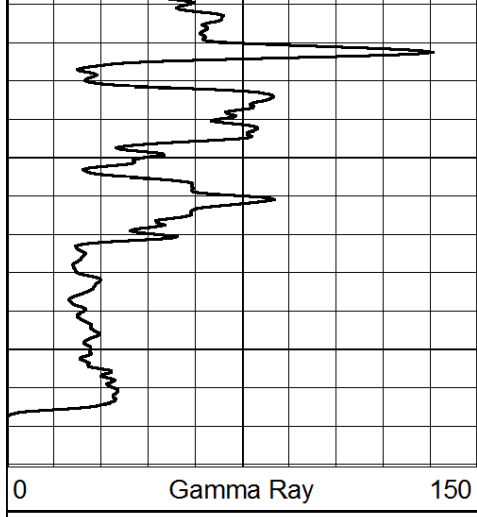
-32



3000  
3050  
3100  
3150  
3200  
3250  
3300  
3350  
3400  
3450  
3500



-32  
-32  
-32  
-32  
-32  
-32  
-32  
-31  
-31  
-31  
-31



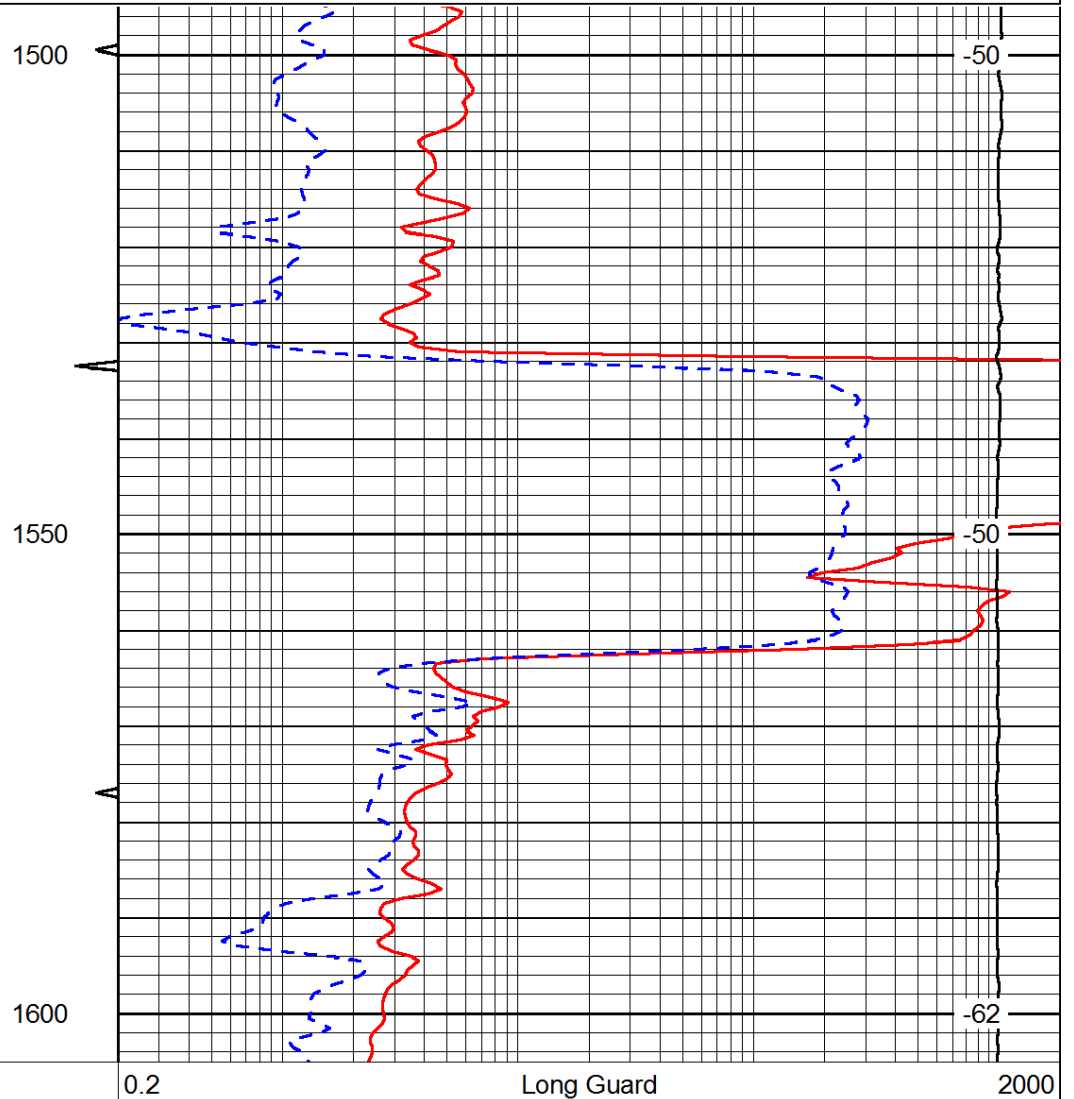
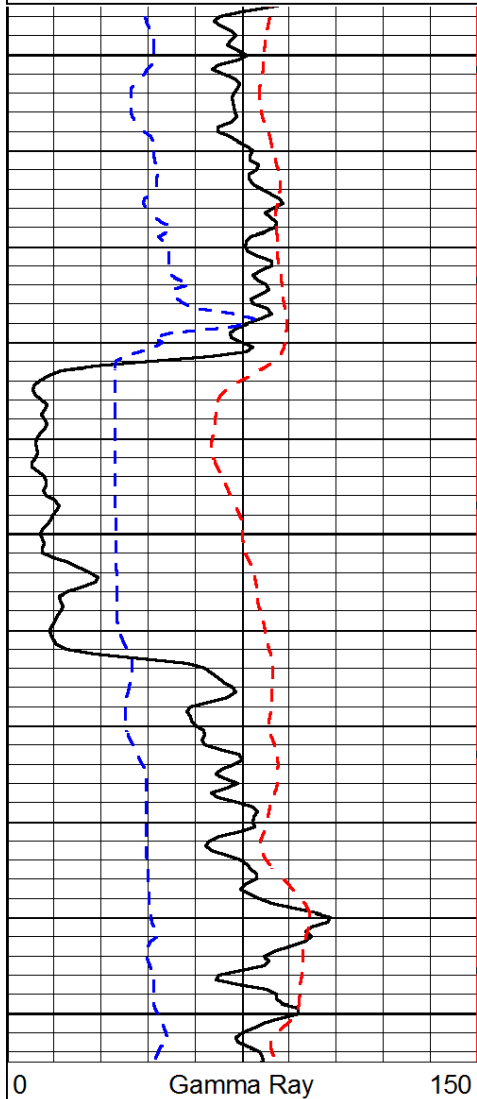
LSPD

Database File: c:\warrior\data\venture\_pelton-billips unit #1\venture\_pelton\_billips\_1hd.db  
 Dataset Pathname: RAG/ventrag  
 Presentation Format: rag  
 Dataset Creation: Sat Oct 20 11:59:59 2012  
 Charted by: Depth in Feet scaled 1:240

0	Gamma Ray	150
6	Caliper (GAPI)	16
-200	SP (mV)	0

0.2	Long Guard	2000
560	Neutron	2160
15000	Line Tension	0

LSPD



LSPD



6	Caliper (GAPI)	16
-200	SP (mV)	0

560	Neutron	2160
15000	Line Tension	0

LSPD

Database File: c:\warrior\data\venture\_pelton-billips unit #1\venture\_pelton\_billips\_1hd.db  
 Dataset Pathname: RAG/ventrag  
 Presentation Format: rag  
 Dataset Creation: Sat Oct 20 11:59:59 2012  
 Charted by: Depth in Feet scaled 1:240

0	Gamma Ray	150
6	Caliper (GAPI)	16
-200	SP (mV)	0

0.2	Long Guard	2000
560	Neutron	2160
15000	Line Tension	0

LSPD

