



TRILOBITE TESTING, INC.

DRILL STEM TEST REPORT

Mikol Oil LLC
 1407 Washington Circ
 Hays KS, 67601
 ATTN: Bob Stolzle

34-10s-16w Rooks KS
Patricia 1-34
 Job Ticket: 51526 **DST#: 2**
 Test Start: 2012.11.18 @ 22:55:00

GENERAL INFORMATION:

Formation: **Simpson Sand**
 Deviated: No Whipstock: 2079.00 ft (KB)
 Time Tool Opened: 00:51:20
 Time Test Ended: 06:30:00
 Interval: **3538.00 ft (KB) To 3650.00 ft (KB) (TVD)**
 Total Depth: 3650.00 ft (KB) (TVD)
 Hole Diameter: 7.88 inches Hole Condition: Fair
 Test Type: Conventional Bottom Hole (Reset)
 Tester: Jim Svaty
 Unit No: 41
 Reference Elevations: 2079.00 ft (KB)
 2074.00 ft (CF)
 KB to GR/CF: 5.00 ft

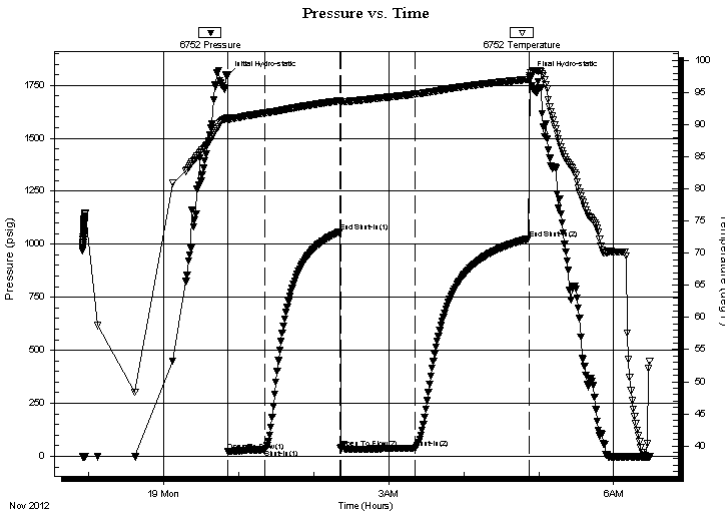
Serial #: 6752

Inside

Press @ Run Depth: 39.57 psig @ 3545.00 ft (KB) Capacity: 8000.00 psig
 Start Date: 2012.11.18 End Date: 2012.11.19 Last Calib.: 2012.11.19
 Start Time: 22:55:01 End Time: 06:29:20 Time On Btm: 2012.11.19 @ 00:51:00
 Time Off Btm: 2012.11.19 @ 04:52:40

TEST COMMENT: 30-IFP- Weak Surface Blow
 60-ISIP- No Blow
 60-FFP- Weak Surface Blow - Surging
 90-FSIP- No Blow

PRESSURE SUMMARY



Time (Min.)	Pressure (psig)	Temp (deg F)	Annotation
0	1795.79	91.05	Initial Hydro-static
1	21.83	90.69	Open To Flow (1)
30	31.46	91.82	Shut-In(1)
90	1058.82	93.73	End Shut-In(1)
91	37.86	93.52	Open To Flow (2)
151	39.57	94.74	Shut-In(2)
241	1026.66	97.04	End Shut-In(2)
242	1797.18	97.28	Final Hydro-static

Recovery

Length (ft)	Description	Volume (bbl)
45.00	WCM 2%w 98%m	0.35

* Recovery from multiple tests

Gas Rates

Choke (inches)	Pressure (psig)	Gas Rate (Mcf/d)



**TRILOBITE
TESTING, INC.**

DRILL STEM TEST REPORT

FLUID SUMMARY

Mikol Oil LLC
1407 Washington Circ
Hays KS, 67601
ATTN: Bob Stolzle

34-10s-16w Rooks KS
Patricia 1-34
Job Ticket: 51526 **DST#: 2**
Test Start: 2012.11.18 @ 22:55:00

Mud and Cushion Information

Mud Type: Gel Chem	Cushion Type:	Oil API:	deg API
Mud Weight: 9.00 lb/gal	Cushion Length: ft	Water Salinity:	ppm
Viscosity: 53.00 sec/qt	Cushion Volume: bbl		
Water Loss: 8.76 in ³	Gas Cushion Type:		
Resistivity: ohm.m	Gas Cushion Pressure: psig		
Salinity: 8000.00 ppm			
Filter Cake: 1.50 inches			

Recovery Information

Recovery Table

Length ft	Description	Volume bbl
45.00	WCM 2%w 98%m	0.349

Total Length: 45.00 ft Total Volume: 0.349 bbl
 Num Fluid Samples: 0 Num Gas Bombs: 0 Serial #:
 Laboratory Name: Laboratory Location:
 Recovery Comments:

Pressure vs. Time

