



**TRILOBITE TESTING, INC.**

# DRILL STEM TEST REPORT

Shakespeare Oil Comp. INC.

**21-15s-32w-Scott KS**

202 West main st.  
Salem, IL 62881

**Zanobia #1-21**

Job Ticket: 49842

**DST#: 1**

ATTN: Tim Priest

Test Start: 2012.11.22 @ 05:06:32

## GENERAL INFORMATION:

Formation: **Lansing B**

Deviated: No Whipstock: ft (KB)

Time Tool Opened: 06:55:47

Time Test Ended: 11:15:32

Test Type: Conventional Bottom Hole (Initial)

Tester: Tate Lang

Unit No: 46

**Interval: 3881.00 ft (KB) To 3860.00 ft (KB) (TVD)**

Reference Elevations: 2865.00 ft (KB)

Total Depth: 3860.00 ft (KB) (TVD)

2855.00 ft (CF)

Hole Diameter: 7.88 inches Hole Condition: Good

KB to GR/CF: 10.00 ft

**Serial #: 8675**

**Inside**

Press @ Run Depth: 79.71 psig @ 3832.00 ft (KB)

Capacity: 8000.00 psig

Start Date: 2012.11.22

End Date:

2012.11.22

Last Calib.:

2012.11.22

Start Time: 05:06:47

End Time:

11:15:32

Time On Btm:

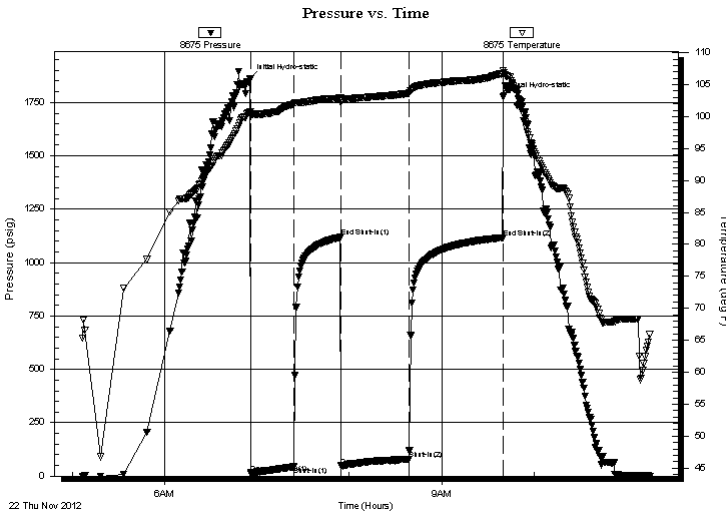
2012.11.22 @ 06:55:32

Time Off Btm:

2012.11.22 @ 09:39:47

**TEST COMMENT:** IF-Weak surface blow built to 3 in.  
IS-Dead no return  
FF-Weak surface blow built to 3 in.  
FS-Dead no return.

## PRESSURE SUMMARY



Time (Min.)	Pressure (psig)	Temp (deg F)	Annotation
0	1862.21	100.69	Initial Hydro-static
1	14.34	100.09	Open To Flow (1)
29	44.25	101.96	Shut-In(1)
59	1118.89	102.89	End Shut-In(1)
59	48.05	102.22	Open To Flow (2)
104	79.71	103.66	Shut-In(2)
164	1117.04	106.73	End Shut-In(2)
165	1776.52	107.24	Final Hydro-static

## Recovery

Length (ft)	Description	Volume (bbl)
90.00	10%W 90%M	0.44

## Gas Rates

	Choke (inches)	Pressure (psig)	Gas Rate (Mcf/d)



**TRILOBITE  
TESTING, INC.**

# DRILL STEM TEST REPORT

**FLUID SUMMARY**

Shakespeare Oil Comp. INC.

**21-15s-32w-Scott KS**

202 West main st.  
Salem, IL 62881

**Zanobia #1-21**

Job Ticket: 49842

**DST#: 1**

ATTN: Tim Priest

Test Start: 2012.11.22 @ 05:06:32

## Mud and Cushion Information

Mud Type: Gel Chem

Cushion Type:

Oil API:

deg API

Mud Weight: 9.00 lb/gal

Cushion Length:

ft

Water Salinity:

ppm

Viscosity: 51.00 sec/qt

Cushion Volume:

bbf

Water Loss: 6.80 in<sup>3</sup>

Gas Cushion Type:

Resistivity: ohm.m

Gas Cushion Pressure:

psig

Salinity: 4800.00 ppm

Filter Cake: 1.00 inches

## Recovery Information

Recovery Table

Length ft	Description	Volume bbf
90.00	10%W 90%M	0.443

Total Length: 90.00 ft      Total Volume: 0.443 bbf

Num Fluid Samples: 0

Num Gas Bombs: 0

Serial #:

Laboratory Name:

Laboratory Location:

Recovery Comments:

Serial #: 8675

Inside

Shakespeare Oil Corp. INC.

Zanobia #1-21

DST Test Number: 1

