



**TRILOBITE  
TESTING, INC.**

# DRILL STEM TEST REPORT

Shakespeare Oil Comp. INC.

**21-15s-32w-Scott KS**

202 West main st.  
Salem, IL 62881

**Zanobia #1-21**

Job Ticket: 49843

**DST#: 2**

ATTN: Tim Priest

Test Start: 2012.11.22 @ 20:45:00

## GENERAL INFORMATION:

Formation: **Lansing D**

Deviated: No Whipstock: ft (KB)

Time Tool Opened: 23:32:00

Time Test Ended: 04:12:45

Test Type: Conventional Bottom Hole (Reset)

Tester: Tate Lang

Unit No: 46

**Interval: 3892.00 ft (KB) To 3911.00 ft (KB) (TVD)**

Reference Elevations: 2865.00 ft (KB)

Total Depth: 3911.00 ft (KB) (TVD)

2855.00 ft (CF)

Hole Diameter: 7.88 inches Hole Condition: Good

KB to GR/CF: 10.00 ft

**Serial #: 8675**

**Inside**

Press @ Run Depth: 147.11 psig @ 3893.00 ft (KB)

Capacity: 8000.00 psig

Start Date: 2012.11.22

End Date:

2012.11.23

Last Calib.: 2012.11.23

Start Time: 20:45:15

End Time:

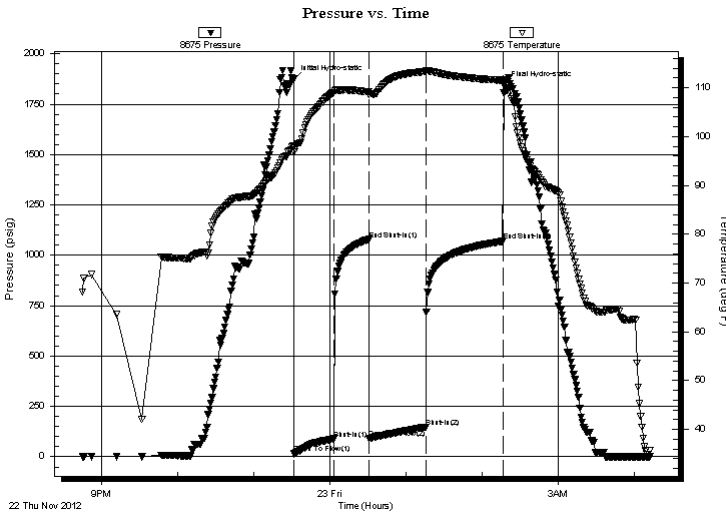
04:12:45

Time On Btm: 2012.11.22 @ 23:31:45

Time Off Btm: 2012.11.23 @ 02:17:30

**TEST COMMENT:** IF-Strong blow built to 8 in.  
ISI-Dead no return  
FF-Built to 8" blow  
FSI-No return blow

## PRESSURE SUMMARY



Time (Min.)	Pressure (psig)	Temp (deg F)	Annotation
0	1872.50	98.06	Initial Hydro-static
1	15.12	96.84	Open To Flow (1)
32	89.44	109.07	Shut-In(1)
59	1078.47	109.16	End Shut-In(1)
60	91.09	108.56	Open To Flow (2)
104	147.11	113.35	Shut-In(2)
165	1069.16	111.56	End Shut-In(2)
166	1842.94	111.26	Final Hydro-static

## Recovery

Length (ft)	Description	Volume (bbl)
290.00	mcw 5%M 95%W	3.00

\* Recovery from multiple tests

## Gas Rates

Choke (inches)	Pressure (psig)	Gas Rate (Mcf/d)



**TRILOBITE  
TESTING, INC.**

# DRILL STEM TEST REPORT

**FLUID SUMMARY**

Shakespeare Oil Comp. INC.

**21-15s-32w-Scott KS**

202 West main st.  
Salem, IL 62881

**Zanobia #1-21**

Job Ticket: 49843

**DST#: 2**

ATTN: Tim Priest

Test Start: 2012.11.22 @ 20:45:00

## Mud and Cushion Information

Mud Type: Gel Chem

Cushion Type:

Oil API:

deg API

Mud Weight: 9.00 lb/gal

Cushion Length:

ft

Water Salinity:

ppm

Viscosity: 52.00 sec/qt

Cushion Volume:

bbbl

Water Loss: 7.00 in<sup>3</sup>

Gas Cushion Type:

Resistivity: ohm.m

Gas Cushion Pressure:

psig

Salinity: 6000.00 ppm

Filter Cake: 1.00 inches

## Recovery Information

Recovery Table

Length ft	Description	Volume bbl
290.00	mcw 5%M 95%W	3.002

Total Length: 290.00 ft      Total Volume: 3.002 bbl

Num Fluid Samples: 0

Num Gas Bombs: 0

Serial #:

Laboratory Name:

Laboratory Location:

Recovery Comments: RW: .50 @ 30 F = 30,000

Serial #: 8675

Inside

Shakespeare Oil Corp. INC.

Zanobia #1-21

DST Test Number: 2

### Pressure vs. Time

