



## DRILL STEM TEST REPORT

Prepared For: **Falcon Exploration Incorporated**

125 North Market  
Suite 1252  
Wichita, Kansas 67202+1719

ATTN: Keith Reavis

**RCJ #1-34**

**34/28S/30W/Gray**

Start Date: 2012.08.30 @ 22:08:00

End Date: 2012.08.31 @ 05:32:00

Job Ticket #: 17675                      DST #: 3

Superior Testers Enterprises LLC  
PO Box 138 Great Bend KS 67530  
1-800-792-6902

Printed: 2012.08.31 @ 05:43:40



# DRILL STEM TEST REPORT

Falcon Exploration Incorporated

**34/28S/30W/Gray**

125 North Market  
Suite 1252  
Wichita, Kansas 67202+1719  
ATTN: Keith Reavis

**RCJ #1-34**

Job Ticket: 17675

**DST#: 3**

Test Start: 2012.08.30 @ 22:08:00

## GENERAL INFORMATION:

Formation: **Lansing/Kansas City**

Deviated: No Whipstock: ft (KB)

Time Tool Opened: 00:20:30

Time Test Ended: 05:32:00

**Interval: 4469.00 ft (KB) To 4521.00 ft (KB) (TVD)**

Total Depth: 4521.00 ft (KB) (TVD)

Hole Diameter: 7.88 inches Hole Condition: Fair

Test Type: Conventional Bottom Hole (Initial)

Tester: Ken Swinney

Unit No: 3325 Great Bend/240

Reference Elevations: 2740.00 ft (KB)

2727.00 ft (CF)

KB to GR/CF: 13.00 ft

**Serial #: 6749**

**Inside**

Press @ Run Depth: 110.52 psia @ 4517.35 ft (KB)

Capacity: 5000.00 psia

Start Date: 2012.08.30

End Date:

2012.08.31

Last Calib.:

2012.08.31

Start Time:

22:08:00

End Time:

05:32:00

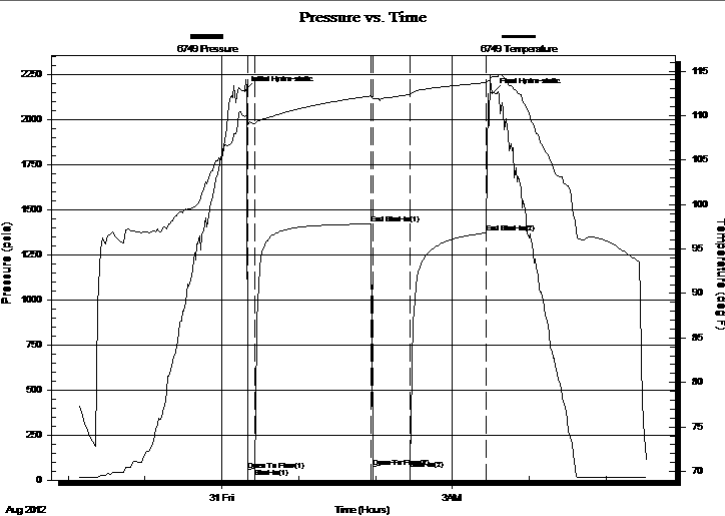
Time On Btm:

2012.08.31 @ 00:18:00

Time Off Btm:

2012.08.31 @ 03:31:30

**TEST COMMENT:** 1ST Open 5 Minutes/Weak blow /Blow built to 1 inch in bucket of w ater  
1ST Shut In 90 Minutes/No blow back  
2ND Open 30 Minutes/No blow /Flush tool/Weak blow built to 1 inch in bucket of w ater  
2ND Shut In 60 Minutes/No blow back



## PRESSURE SUMMARY

Time (Min.)	Pressure (psia)	Temp (deg F)	Annotation
0	2157.74	109.87	Initial Hydro-static
3	55.58	108.92	Open To Flow (1)
8	65.80	109.09	Shut-In(1)
99	1419.94	112.22	End Shut-In(1)
100	71.96	111.92	Open To Flow (2)
129	110.52	112.36	Shut-In(2)
189	1370.18	113.70	End Shut-In(2)
194	2146.77	114.34	Final Hydro-static

## Recovery

Length (ft)	Description	Volume (bbl)
120.00	Mud 100%	0.59

## Gas Rates

Choke (inches)	Pressure (psia)	Gas Rate (Mcf/d)



# DRILL STEM TEST REPORT

Falcon Exploration Incorporated

**34/28S/30W/Gray**

125 North Market  
Suite 1252  
Wichita, Kansas 67202+1719  
ATTN: Keith Reavis

**RCJ #1-34**

Job Ticket: 17675

**DST#: 3**

Test Start: 2012.08.30 @ 22:08:00

## GENERAL INFORMATION:

Formation: **Lansing/Kansas City**

Deviated: No Whipstock: ft (KB)

Time Tool Opened: 00:20:30

Time Test Ended: 05:32:00

Test Type: Conventional Bottom Hole (Initial)

Tester: Ken Swinney

Unit No: 3325 Great Bend/240

**Interval: 4469.00 ft (KB) To 4521.00 ft (KB) (TVD)**

Reference Elevations: 2740.00 ft (KB)

Total Depth: 4521.00 ft (KB) (TVD)

2727.00 ft (CF)

Hole Diameter: 7.88 inches Hole Condition: Fair

KB to GR/CF: 13.00 ft

**Serial #: 6999 Outside**

Press @ Run Depth: 1365.23 psia @ 4518.35 ft (KB)

Capacity: 5000.00 psia

Start Date: 2012.08.30

End Date: 2012.08.31

Last Calib.: 2012.08.31

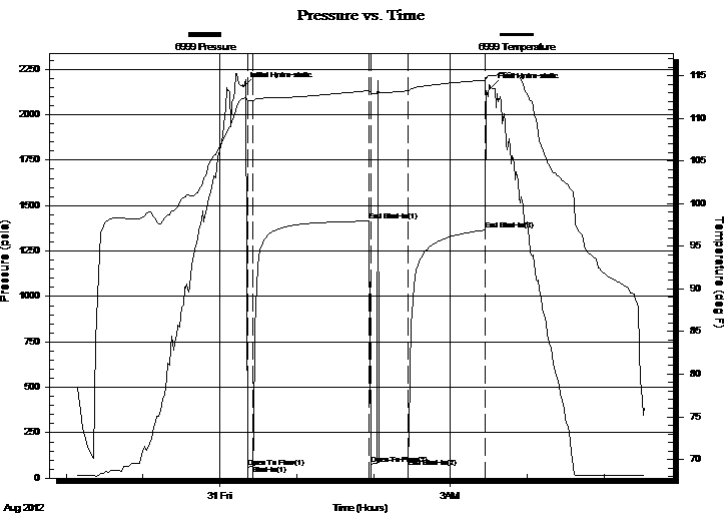
Start Time: 22:08:00

End Time: 05:32:00

Time On Btm: 2012.08.31 @ 00:18:30

Time Off Btm: 2012.08.31 @ 03:31:30

**TEST COMMENT:** 1ST Open 5 Minutes/Weak blow /Blow built to 1 inch in bucket of w ater  
1ST Shut In 90 Minutes/No blow back  
2ND Open 30 Minutes/No blow /Flush tool/Weak blow built to 1 inch in bucket of w ater  
2ND Shut In 60 Minutes/No blow back



## PRESSURE SUMMARY

Time (Min.)	Pressure (psia)	Temp (deg F)	Annotation
0	2157.55	112.31	Initial Hydro-static
3	58.19	112.11	Open To Flow (1)
8	68.25	112.04	Shut-In(1)
99	1414.45	113.25	End Shut-In(1)
99	74.59	112.97	Open To Flow (2)
128	109.70	113.23	End Shut-In(2)
189	1365.23	114.48	End Shut-In(3)
193	2147.78	115.02	Final Hydro-static

## Recovery

Length (ft)	Description	Volume (bbl)
120.00	Mud 100%	0.59

## Gas Rates

Choke (inches)	Pressure (psia)	Gas Rate (Mcf/d)



# DRILL STEM TEST REPORT

**TOOL DIAGRAM**

Falcon Exploration Incorporated

**34/28S/30W/Gray**

125 North Market  
Suite 1252  
Wichita, Kansas 67202+1719  
ATTN: Keith Reavis

**RCJ #1-34**

Job Ticket: 17675

**DST#: 3**

Test Start: 2012.08.30 @ 22:08:00

## Tool Information

Drill Pipe:	Length: 4127.00 ft	Diameter: 3.80 inches	Volume: 57.89 bbl	Tool Weight:	2000.00 lb
Heavy Wt. Pipe:	Length: 0.00 ft	Diameter: 0.00 inches	Volume: 0.00 bbl	Weight set on Packer:	20000.00 lb
Drill Collar:	Length: 330.00 ft	Diameter: 2.25 inches	Volume: 1.62 bbl	Weight to Pull Loose:	115000.0 lb
			<u>Total Volume: 59.51 bbl</u>	Tool Chased	0.00 ft
Drill Pipe Above KB:	15.00 ft			String Weight: Initial	84000.00 lb
Depth to Top Packer:	4469.00 ft			Final	84000.00 lb
Depth to Bottom Packer:	ft				
Interval between Packers:	52.35 ft				
Tool Length:	79.35 ft				
Number of Packers:	2	Diameter:	6.75 inches		
Tool Comments:					

Tool Description	Length (ft)	Serial No.	Position	Depth (ft)	Accum. Lengths
------------------	-------------	------------	----------	------------	----------------

Shut In Tool	5.00			4447.00	
Hydraulic Tool	5.00			4452.00	
Jars	5.00			4457.00	
Safety Joint	2.00			4459.00	
Packer	5.00			4464.00	27.00 Bottom Of Top Packer
Packer	5.00			4469.00	
Perforations	4.00			4473.00	
Change Over Sub	0.65			4473.65	
Drill Pipe	32.05			4505.70	
Change Over Sub	0.65			4506.35	
Anchor	10.00			4516.35	
Recorder	1.00	6749	Inside	4517.35	
Recorder	1.00	6999	Outside	4518.35	
Bullnose	3.00			4521.35	52.35 Bottom Packers & Anchor

**Total Tool Length: 79.35**



# DRILL STEM TEST REPORT

## FLUID SUMMARY

Falcon Exploration Incorporated

**34/28S/30W/Gray**

125 North Market  
Suite 1252  
Wichita, Kansas 67202+1719  
ATTN: Keith Reavis

**RCJ #1-34**

Job Ticket: 17675

**DST#: 3**

Test Start: 2012.08.30 @ 22:08:00

### Mud and Cushion Information

Mud Type: Gel Chem

Mud Weight: 9.00 lb/gal

Viscosity: 47.00 sec/qt

Water Loss: 9.19 in<sup>3</sup>

Resistivity: ohm.m

Salinity: 3600.00 ppm

Filter Cake: 1.00 inches

Cushion Type:

Cushion Length: ft

Cushion Volume: bbl

Gas Cushion Type:

Gas Cushion Pressure: psia

Oil API:

Water Salinity: deg API

ppm

### Recovery Information

Recovery Table

Length ft	Description	Volume bbl
120.00	Mud 100%	0.590

Total Length: 120.00 ft      Total Volume: 0.590 bbl

Num Fluid Samples: 0

Num Gas Bombs: 0

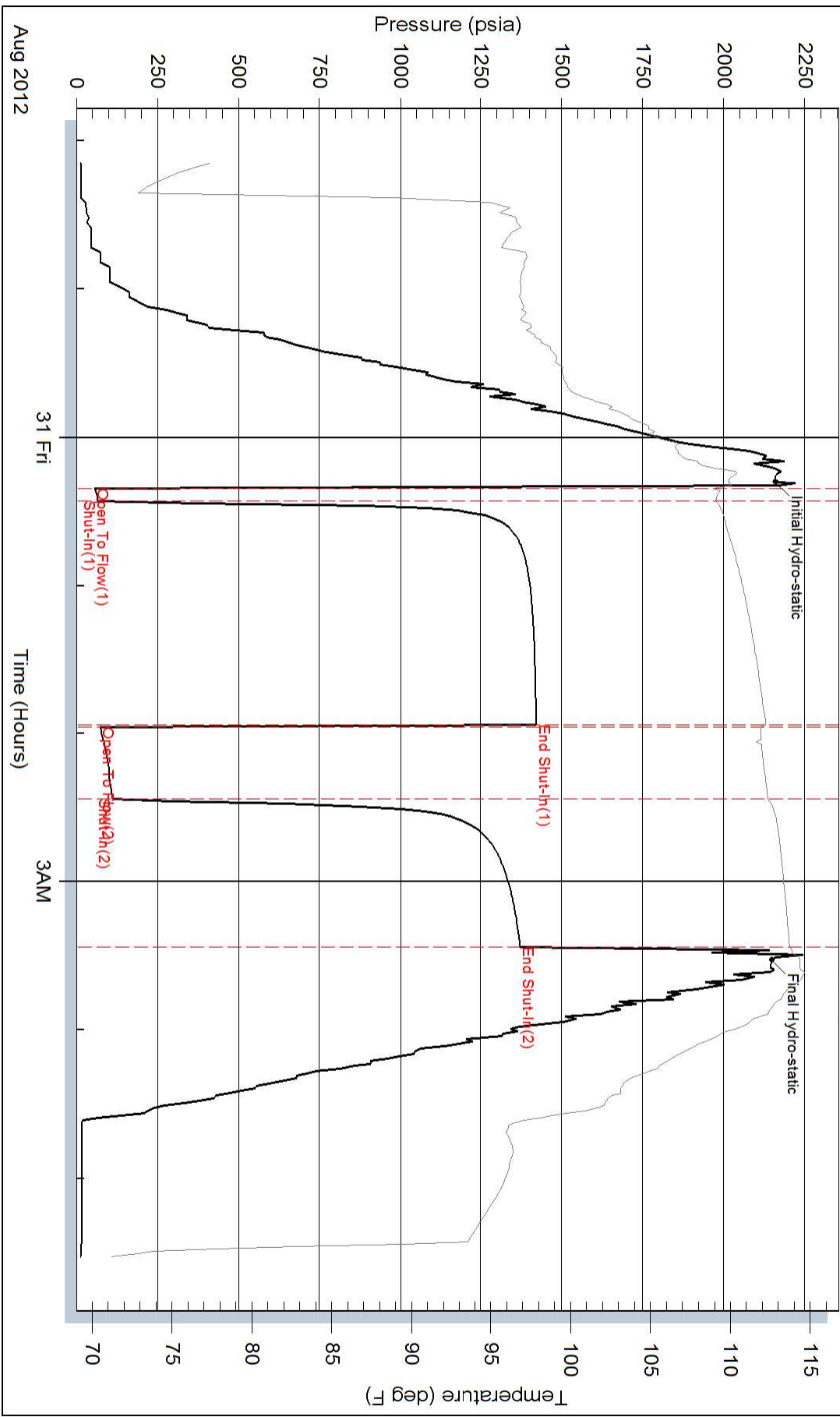
Serial #:

Laboratory Name:

Laboratory Location:

Recovery Comments:

### Pressure vs. Time



### Pressure vs. Time

