



**TRILOBITE TESTING, INC.**

# DRILL STEM TEST REPORT

Venture Resources Inc  
 2255 S. Wadsworth Ste. 205  
 Lakewood, Colo  
 80227  
 ATTN: Marc Downing

**17-8s-21w Graham ,Ks**

**Pelton-Billips #1**

Job Ticket: 50168      **DST#: 3**  
 Test Start: 2012.10.18 @ 09:40:35

## GENERAL INFORMATION:

Formation: **I-J**  
 Deviated: No Whipstock: 0.00 ft (KB)  
 Time Tool Opened: 11:49:20  
 Time Test Ended: 16:55:50  
 Interval: **3415.00 ft (KB) To 3450.00 ft (KB) (TVD)**  
 Total Depth: 3450.00 ft (KB) (TVD)  
 Hole Diameter: 7.88 inches Hole Condition: Fair  
 Test Type: Conventional Bottom Hole (Reset)  
 Tester: Shane McBride  
 Unit No: 55  
 Reference Elevations: 2036.00 ft (KB)  
 2030.00 ft (CF)  
 KB to GR/CF: 6.00 ft

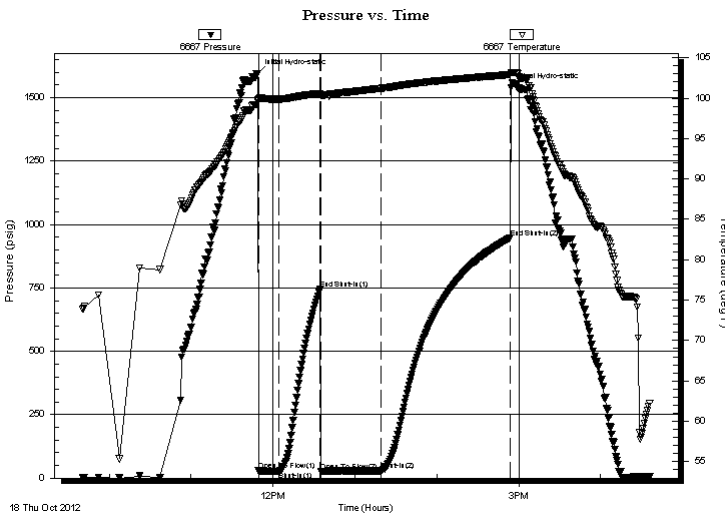
## Serial #: 6667

**Outside**

Press @ Run Depth: 29.16 psig @ 3416.00 ft (KB)      Capacity: 8000.00 psig  
 Start Date: 2012.10.18      End Date: 2012.10.18      Last Calib.: 2012.10.18  
 Start Time: 09:40:35      End Time: 16:35:50      Time On Btm: 2012.10.18 @ 11:48:50  
 Time Off Btm: 2012.10.18 @ 14:54:35

**TEST COMMENT:** 1/2" in @ open died in 12 min.  
 No return  
 No blow, flush tool, good surge, no blow  
 No return

## PRESSURE SUMMARY



Time (Min.)	Pressure (psig)	Temp (deg F)	Annotation
0	1596.09	99.84	Initial Hydro-static
1	29.34	99.83	Open To Flow (1)
16	27.34	99.88	Shut-In(1)
46	746.99	100.61	End Shut-In(1)
47	27.34	100.37	Open To Flow (2)
90	29.16	101.21	Shut-In(2)
185	947.73	102.92	End Shut-In(2)
186	1538.50	103.16	Final Hydro-static

## Recovery

Length (ft)	Description	Volume (bbl)
10.00	mud 100% mud	0.14

\* Recovery from multiple tests

## Gas Rates

Choke (inches)	Pressure (psig)	Gas Rate (Mcf/d)



**TRILOBITE  
TESTING, INC.**

# DRILL STEM TEST REPORT

**FLUID SUMMARY**

Venture Resources Inc  
2255 S. Wadsworth Ste. 205  
Lakewood, Colo  
80227  
ATTN: Marc Downing

**17-8s-21w Graham ,Ks**  
**Pelton-Billips #1**  
Job Ticket: 50168      **DST#: 3**  
Test Start: 2012.10.18 @ 09:40:35

## Mud and Cushion Information

Mud Type: Gel Chem	Cushion Type:	Oil API:	0 deg API
Mud Weight: 9.00 lb/gal	Cushion Length: ft	Water Salinity:	0 ppm
Viscosity: 37.00 sec/qt	Cushion Volume: bbl		
Water Loss: 7.96 in <sup>3</sup>	Gas Cushion Type:		
Resistivity: 0.00 ohm.m	Gas Cushion Pressure: psig		
Salinity: 1600.00 ppm			
Filter Cake: 1.00 inches			

## Recovery Information

Recovery Table

Length ft	Description	Volume bbl
10.00	mud 100% mud	0.140

Total Length: 10.00 ft      Total Volume: 0.140 bbl

Num Fluid Samples: 0      Num Gas Bombs: 0      Serial #:

Laboratory Name:      Laboratory Location:

Recovery Comments: sampler 2000ml mud 80psi

