



DRILL STEM TEST REPORT

Prepared For: **H&C Oil Operations**

Box 86
Plainville KS 67663

ATTN: Charles Ramsey

Fowler #14-1

14-7s-25w Graham,KS

Start Date: 2012.10.15 @ 21:45:12

End Date: 2012.10.16 @ 04:36:36

Job Ticket #: 48665 DST #: 1

Trilobite Testing, Inc

PO Box 362 Hays, KS 67601

ph: 785-625-4778 fax: 785-625-5620

Printed: 2012.10.18 @ 14:32:27



**TRILOBITE
TESTING, INC.**

DRILL STEM TEST REPORT

H&C Oil Operations

14-7s-25w Graham,KS

Box 86
Plainville KS 67663

Fowler #14-1

Job Ticket: 48665

DST#: 1

ATTN: Charles Ramsey

Test Start: 2012.10.15 @ 21:45:12

GENERAL INFORMATION:

Formation: **Lansing**

Deviated: No Whipstock: ft (KB)

Time Tool Opened: 23:52:37

Time Test Ended: 04:36:36

Test Type: Conventional Bottom Hole (Initial)

Tester: Paul Simpson

Unit No: 58

Interval: 3648.00 ft (KB) To 3670.00 ft (KB) (TVD)

Reference Elevations: 2353.00 ft (KB)

Total Depth: 3670.00 ft (KB) (TVD)

2348.00 ft (CF)

Hole Diameter: 7.88 inches Hole Condition: Good

KB to GR/CF: 5.00 ft

Serial #: 8355 Outside

Press @ RunDepth: 32.29 psig @ 3649.00 ft (KB)

Capacity: 8000.00 psig

Start Date: 2012.10.15

End Date:

2012.10.16

Last Calib.: 2012.10.15

Start Time: 21:45:12

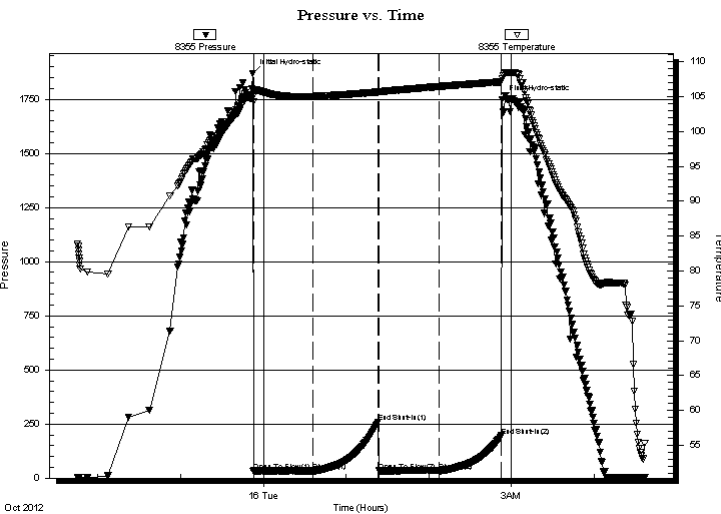
End Time:

04:36:36

Time On Btm: 2012.10.15 @ 23:52:22

Time Off Btm: 2012.10.16 @ 02:53:07

TEST COMMENT: Tool slid 8' w hen opening- lost 10' of mud IF slow bubbling 3" blow
ISI no blow
FF weak 1/2" blow decreasing to surface



PRESSURE SUMMARY

Time (Min.)	Pressure (psig)	Temp (deg F)	Annotation
0	1870.05	104.94	Initial Hydro-static
1	32.88	104.30	Open To Flow (1)
44	31.13	105.01	Shut-In(1)
91	258.58	105.65	End Shut-In(1)
92	33.44	105.67	Open To Flow (2)
135	32.29	106.43	Shut-In(2)
181	195.14	107.11	End Shut-In(2)
181	1748.90	107.52	Final Hydro-static

Recovery

Length (ft)	Description	Volume (bbl)
30.00	mud w ith oil specks in tool	0.42

Gas Rates

Choke (inches)	Pressure (psig)	Gas Rate (Mcf/d)



TRILOBITE TESTING, INC.

DRILL STEM TEST REPORT

H&C Oil Operations

14-7s-25w Graham,KS

Box 86
Plainville KS 67663

Fowler #14-1

Job Ticket: 48665

DST#: 1

ATTN: Charles Ramsey

Test Start: 2012.10.15 @ 21:45:12

GENERAL INFORMATION:

Formation: **Lansing**

Deviated: No Whipstock: ft (KB)

Time Tool Opened: 23:52:37

Time Test Ended: 04:36:36

Test Type: Conventional Bottom Hole (Initial)

Tester: Paul Simpson

Unit No: 58

Interval: 3648.00 ft (KB) To 3670.00 ft (KB) (TVD)

Reference Elevations: 2353.00 ft (KB)

Total Depth: 3670.00 ft (KB) (TVD)

2348.00 ft (CF)

Hole Diameter: 7.88 inches Hole Condition: Good

KB to GR/CF: 5.00 ft

Serial #: 8674 Inside

Press @ RunDepth: psig @ 3649.00 ft (KB)

Capacity: 8000.00 psig

Start Date: 2012.10.15 End Date: 2012.10.16

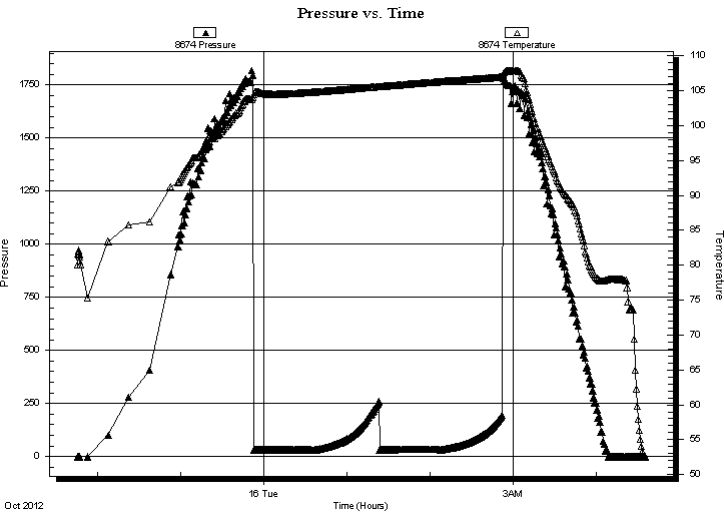
Last Calib.: 1899.12.30

Start Time: 21:45:29 End Time: 04:34:53

Time On Btm:

Time Off Btm:

TEST COMMENT: Tool slid 8' w hen opening- lost 10' of mud IF slow bubbling 3" blow
ISI no blow
FF weak 1/2" blow decreasing to surface



PRESSURE SUMMARY

Time (Min.)	Pressure (psig)	Temp (deg F)	Annotation

Recovery

Length (ft)	Description	Volume (bbl)
30.00	mud w ith oil specks in tool	0.42

Gas Rates

Choke (inches)	Pressure (psig)	Gas Rate (Mcf/d)



**TRILOBITE
TESTING, INC.**

DRILL STEM TEST REPORT

TOOL DIAGRAM

H&C Oil Operations

14-7s-25w Graham,KS

Box 86
Plainville KS 67663

Fowler #14-1

Job Ticket: 48665

DST#: 1

ATTN: Charles Ramsey

Test Start: 2012.10.15 @ 21:45:12

Tool Information

Drill Pipe:	Length: 3652.00 ft	Diameter: 3.80 inches	Volume: 51.23 bbl	Tool Weight: 2200.00 lb
Heavy Wt. Pipe:	Length: 0.00 ft	Diameter: 0.00 inches	Volume: 0.00 bbl	Weight set on Packer: 22000.00 lb
Drill Collar:	Length: 0.00 ft	Diameter: 2.25 inches	Volume: 0.00 bbl	Weight to Pull Loose: 60000.00 lb
			<u>Total Volume: 51.23 bbl</u>	Tool Chased 8.00 ft
Drill Pipe Above KB:	24.00 ft			String Weight: Initial 42000.00 lb
Depth to Top Packer:	3648.00 ft			Final 42000.00 lb
Depth to Bottom Packer:	ft			
Interval between Packers:	22.00 ft			
Tool Length:	42.00 ft			
Number of Packers:	2	Diameter: 6.75 inches		

Tool Comments:

Tool Description	Length (ft)	Serial No.	Position	Depth (ft)	Accum. Lengths
------------------	-------------	------------	----------	------------	----------------

Change Over Sub	1.00			3629.00	
Shut In Tool	5.00			3634.00	
Hydraulic tool	5.00			3639.00	
Packer	5.00			3644.00	20.00 Bottom Of Top Packer
Packer	4.00			3648.00	
Stubb	1.00			3649.00	
Recorder	0.00	8355	Outside	3649.00	
Recorder	0.00	8674	Inside	3649.00	
Perforations	18.00			3667.00	
Bullnose	3.00			3670.00	22.00 Bottom Packers & Anchor
Total Tool Length:	42.00				



**TRILOBITE
TESTING, INC.**

DRILL STEM TEST REPORT

FLUID SUMMARY

H&C Oil Operations

14-7s-25w Graham,KS

Box 86
Plainville KS 67663

Fowler #14-1

Job Ticket: 48665

DST#: 1

ATTN: Charles Ramsey

Test Start: 2012.10.15 @ 21:45:12

Mud and Cushion Information

Mud Type: Gel Chem

Cushion Type:

Oil API:

deg API

Mud Weight: 9.00 lb/gal

Cushion Length:

ft

Water Salinity:

ppm

Viscosity: 61.00 sec/qt

Cushion Volume:

bbbl

Water Loss: in³

Gas Cushion Type:

Resistivity: ohm.m

Gas Cushion Pressure:

psig

Salinity: ppm

Filter Cake: inches

Recovery Information

Recovery Table

Length ft	Description	Volume bbl
30.00	mud w ith oil specks in tool	0.421

Total Length: 30.00 ft Total Volume: 0.421 bbl

Num Fluid Samples: 0

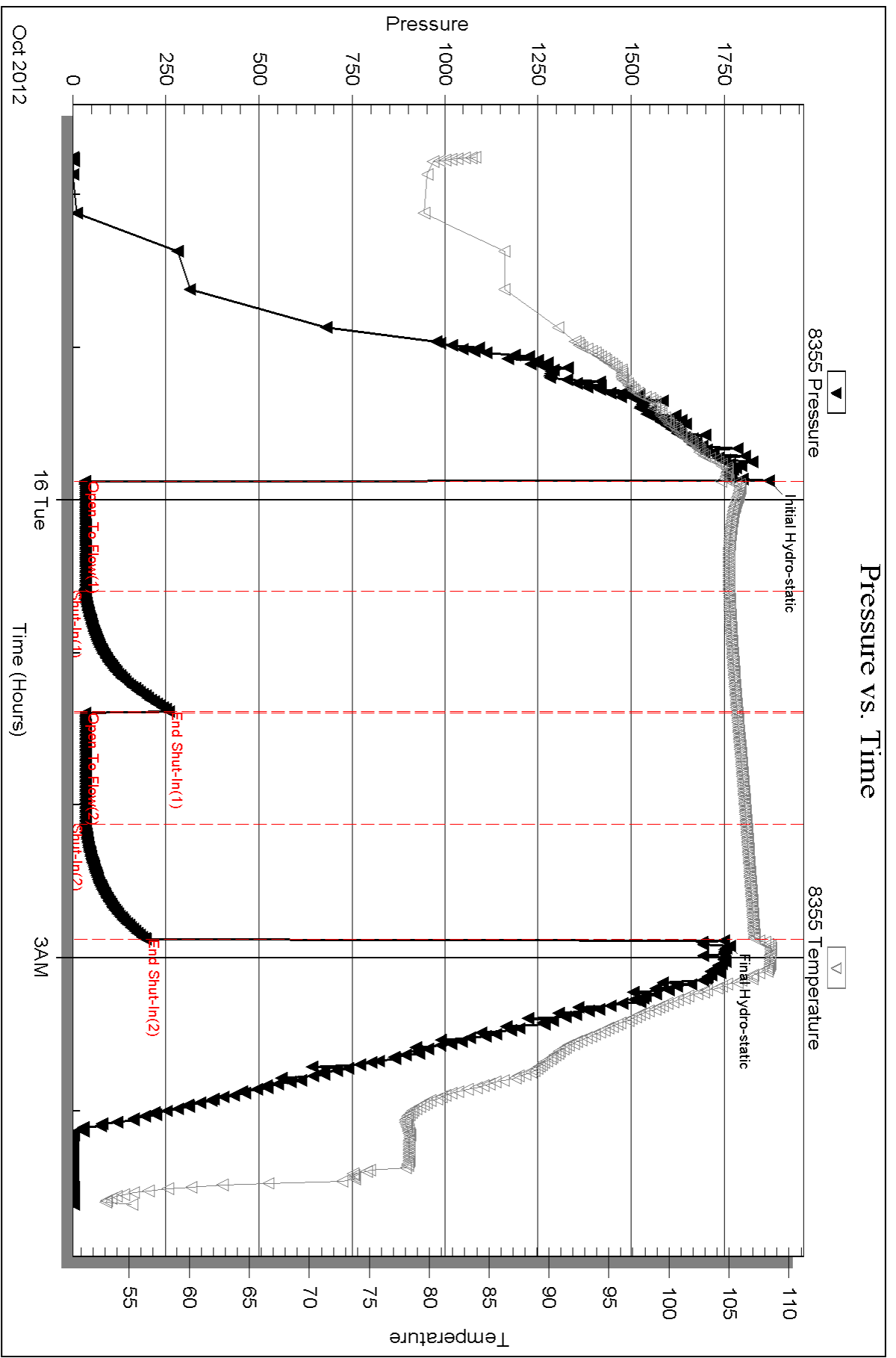
Num Gas Bombs: 0

Serial #:

Laboratory Name:

Laboratory Location:

Recovery Comments:



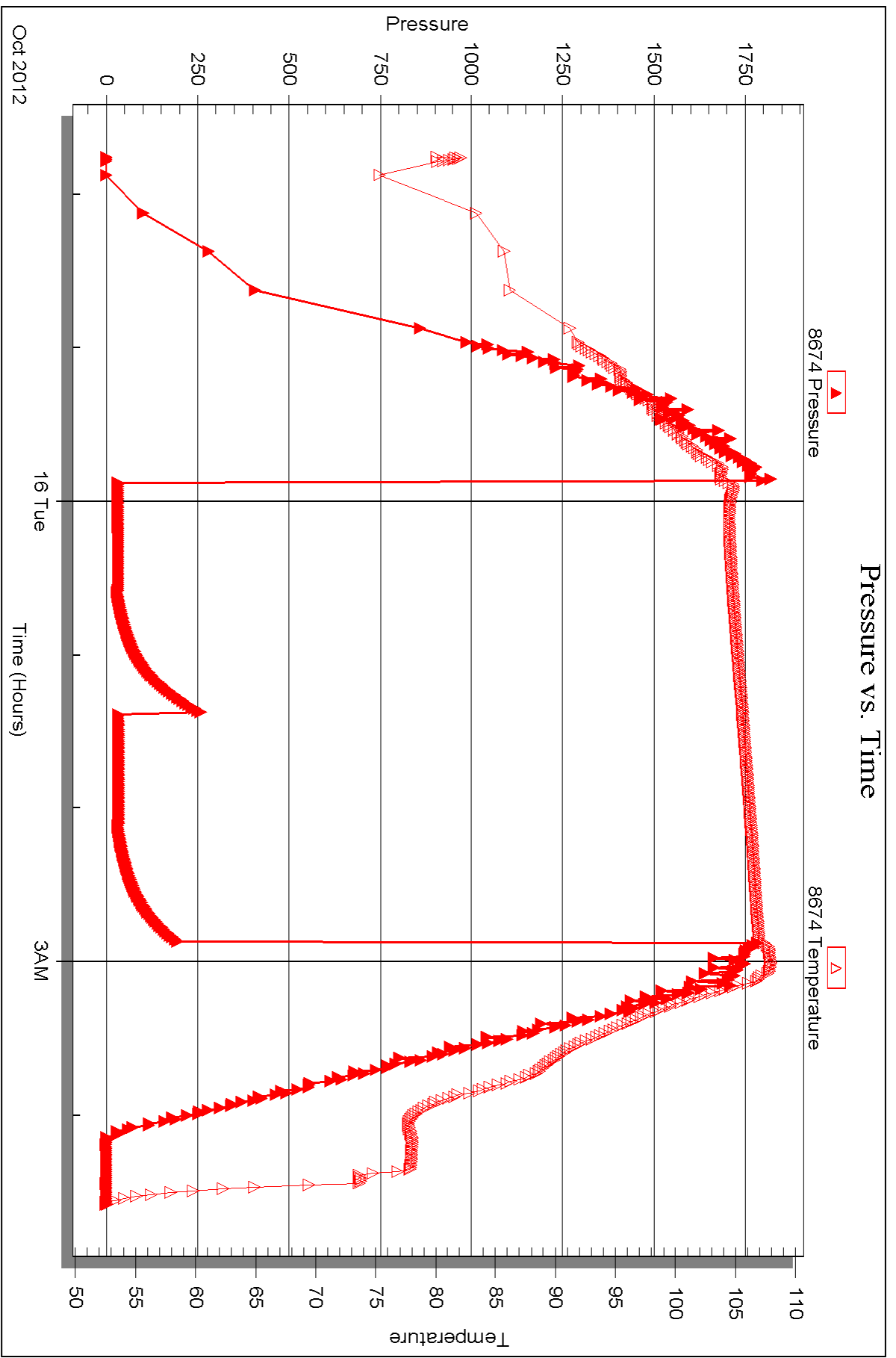
Serial #: 8674

Inside

H&C Oil Operations

Fowler #14-1

DST Test Number: 1



Triobite Testing, Inc

Ref. No: 48665

Printed: 2012.10.18 @ 14:32:32



DRILL STEM TEST REPORT

Prepared For: **H&C Oil Operations**

Box 86
Plainville KS 67663

ATTN: Charles Ramsey

Fowler #14-1

14-7s-25w Graham,KS

Start Date: 2012.10.16 @ 12:27:19

End Date: 2012.10.16 @ 19:14:19

Job Ticket #: 48666 DST #: 2

Trilobite Testing, Inc

PO Box 362 Hays, KS 67601

ph: 785-625-4778 fax: 785-625-5620

Printed: 2012.10.18 @ 14:31:12



**TRILOBITE
TESTING, INC.**

DRILL STEM TEST REPORT

H&C Oil Operations

14-7s-25w Graham,KS

Box 86
Plainville KS 67663

Fowler #14-1

Job Ticket: 48666

DST#: 2

ATTN: Charles Ramsey

Test Start: 2012.10.16 @ 12:27:19

GENERAL INFORMATION:

Formation: **Lansing D**

Deviated: No Whipstock: ft (KB)

Time Tool Opened: 14:27:19

Time Test Ended: 19:14:19

Test Type: Conventional Bottom Hole (Initial)

Tester: Paul Simpson

Unit No: 58

Interval: 3669.00 ft (KB) To 3691.00 ft (KB) (TVD)

Reference Elevations: 2353.00 ft (KB)

Total Depth: 3691.00 ft (KB) (TVD)

2348.00 ft (CF)

Hole Diameter: 7.88 inches Hole Condition: Good

KB to GR/CF: 5.00 ft

Serial #: 8355 Outside

Press @ RunDepth: 50.09 psig @ 3670.00 ft (KB)

Capacity: 8000.00 psig

Start Date: 2012.10.16

End Date:

2012.10.16

Last Calib.:

2012.10.16

Start Time: 12:27:29

End Time:

19:14:19

Time On Btm:

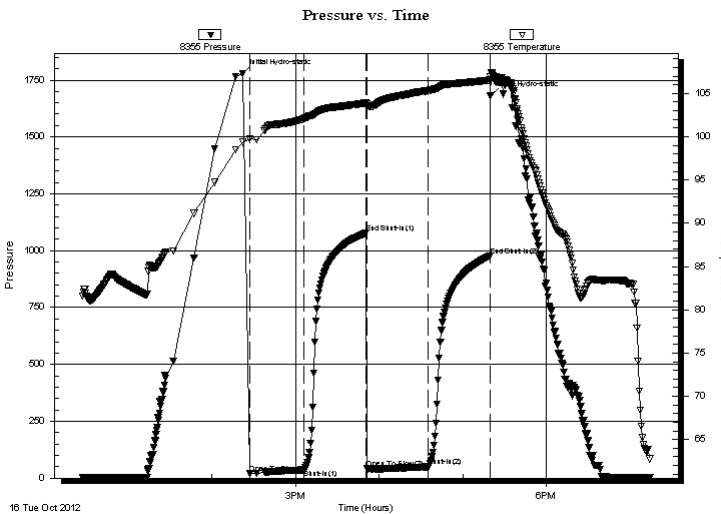
2012.10.16 @ 14:22:19

Time Off Btm:

2012.10.16 @ 17:19:49

TEST COMMENT: 45 IF w eal 1/2" blow building to 6"
45 no blow
45 w eak surface blow building to 1.5"
45 FSI no blow

PRESSURE SUMMARY



Time (Min.)	Pressure (psig)	Temp (deg F)	Annotation
0	1779.68	99.36	Initial Hydro-static
5	19.65	99.81	Open To Flow (1)
44	36.55	102.08	Shut-In(1)
89	1077.25	103.90	End Shut-In(1)
89	42.29	103.76	Open To Flow (2)
133	50.09	105.32	Shut-In(2)
178	977.47	106.54	End Shut-In(2)
178	1682.28	106.95	Final Hydro-static

Recovery

Length (ft)	Description	Volume (bbl)
40.00	OCM 20% o 80@ muc	0.56
80.00	thick tarry oil unable to check gravity	1.12

Gas Rates

	Choke (inches)	Pressure (psig)	Gas Rate (Mcf/d)



**TRILOBITE
TESTING, INC.**

DRILL STEM TEST REPORT

TOOL DIAGRAM

H&C Oil Operations

14-7s-25w Graham,KS

Box 86
Plainville KS 67663

Fowler #14-1

Job Ticket: 48666

DST#: 2

ATTN: Charles Ramsey

Test Start: 2012.10.16 @ 12:27:19

Tool Information

Drill Pipe:	Length: 3680.00 ft	Diameter: 3.80 inches	Volume: 51.62 bbl	Tool Weight: 2200.00 lb
Heavy Wt. Pipe:	Length: 0.00 ft	Diameter: inches	Volume: 0.00 bbl	Weight set on Packer: 22000.00 lb
Drill Collar:	Length: 0.00 ft	Diameter: 2.25 inches	Volume: 0.00 bbl	Weight to Pull Loose: 55000.00 lb
			<u>Total Volume: 51.62 bbl</u>	Tool Chased ft
Drill Pipe Above KB:	31.00 ft			String Weight: Initial 42000.00 lb
Depth to Top Packer:	3669.00 ft			Final 42000.00 lb
Depth to Bottom Packer:	ft			
Interval between Packers:	22.00 ft			
Tool Length:	42.00 ft			
Number of Packers:	2	Diameter: 6.75 inches		

Tool Comments:

Tool Description	Length (ft)	Serial No.	Position	Depth (ft)	Accum. Lengths
------------------	-------------	------------	----------	------------	----------------

Change Over Sub	1.00			3650.00	
Shut In Tool	5.00			3655.00	
Hydraulic tool	5.00			3660.00	
Packer	5.00			3665.00	20.00 Bottom Of Top Packer
Packer	4.00			3669.00	
Stubb	1.00			3670.00	
Recorder	0.00	8355	Outside	3670.00	
Recorder	0.00	8674	Inside	3670.00	
Perforations	18.00			3688.00	
Bullnose	3.00			3691.00	22.00 Bottom Packers & Anchor
Total Tool Length:	42.00				



**TRILOBITE
TESTING, INC.**

DRILL STEM TEST REPORT

FLUID SUMMARY

H&C Oil Operations

14-7s-25w Graham,KS

Box 86
Plainville KS 67663

Fowler #14-1

Job Ticket: 48666

DST#: 2

ATTN: Charles Ramsey

Test Start: 2012.10.16 @ 12:27:19

Mud and Cushion Information

Mud Type: Gel Chem

Cushion Type:

Oil API:

deg API

Mud Weight: 9.00 lb/gal

Cushion Length:

ft

Water Salinity:

ppm

Viscosity: 61.00 sec/qt

Cushion Volume:

bbbl

Water Loss: 8.77 in³

Gas Cushion Type:

Resistivity: ohm.m

Gas Cushion Pressure:

psig

Salinity: ppm

Filter Cake: inches

Recovery Information

Recovery Table

Length ft	Description	Volume bbl
40.00	OCM 20% o 80@ muc	0.561
80.00	thick tarry oil unable to check gravity	1.122

Total Length: 120.00 ft

Total Volume: 1.683 bbl

Num Fluid Samples: 0

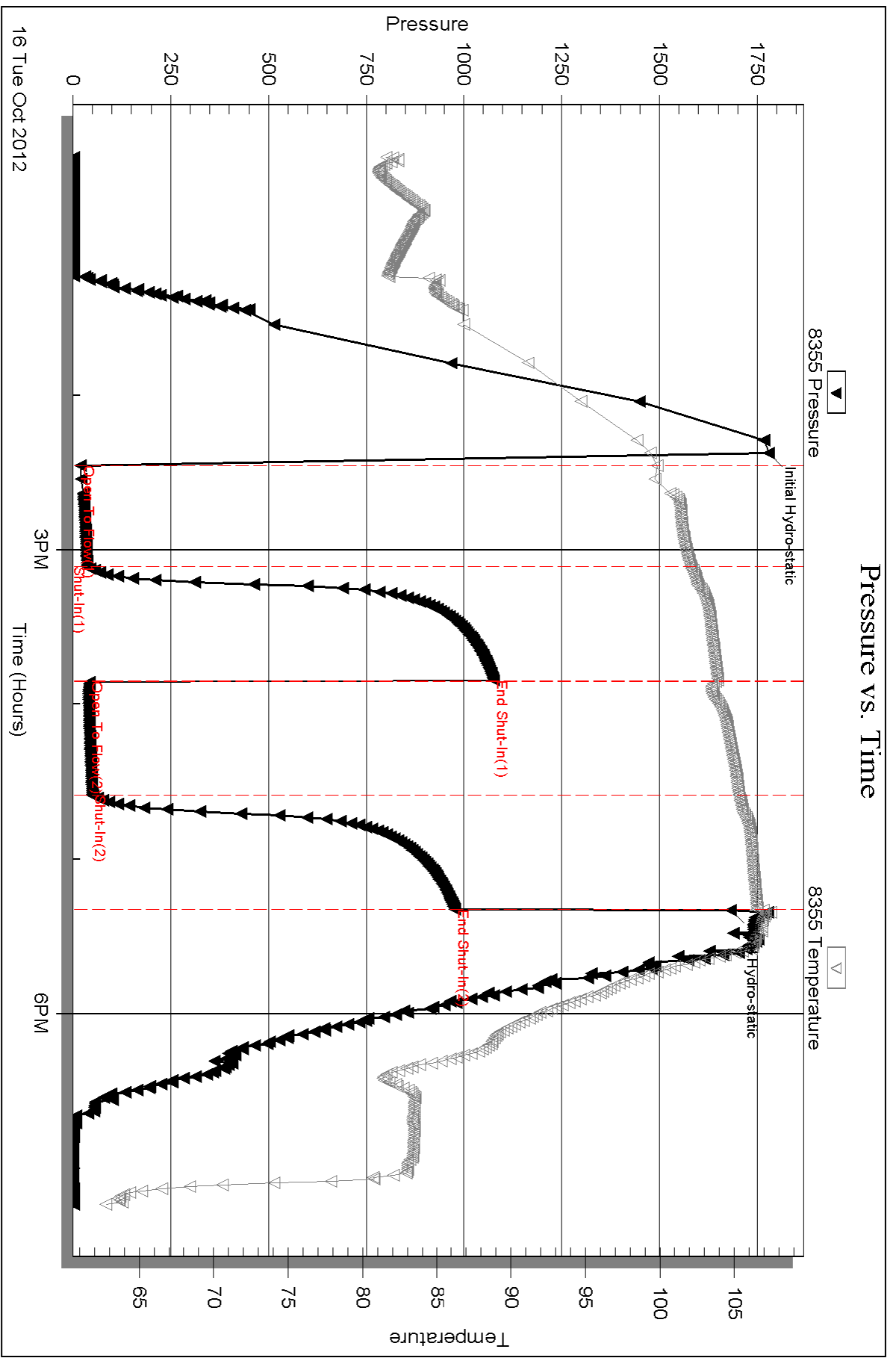
Num Gas Bombs: 0

Serial #:

Laboratory Name:

Laboratory Location:

Recovery Comments:



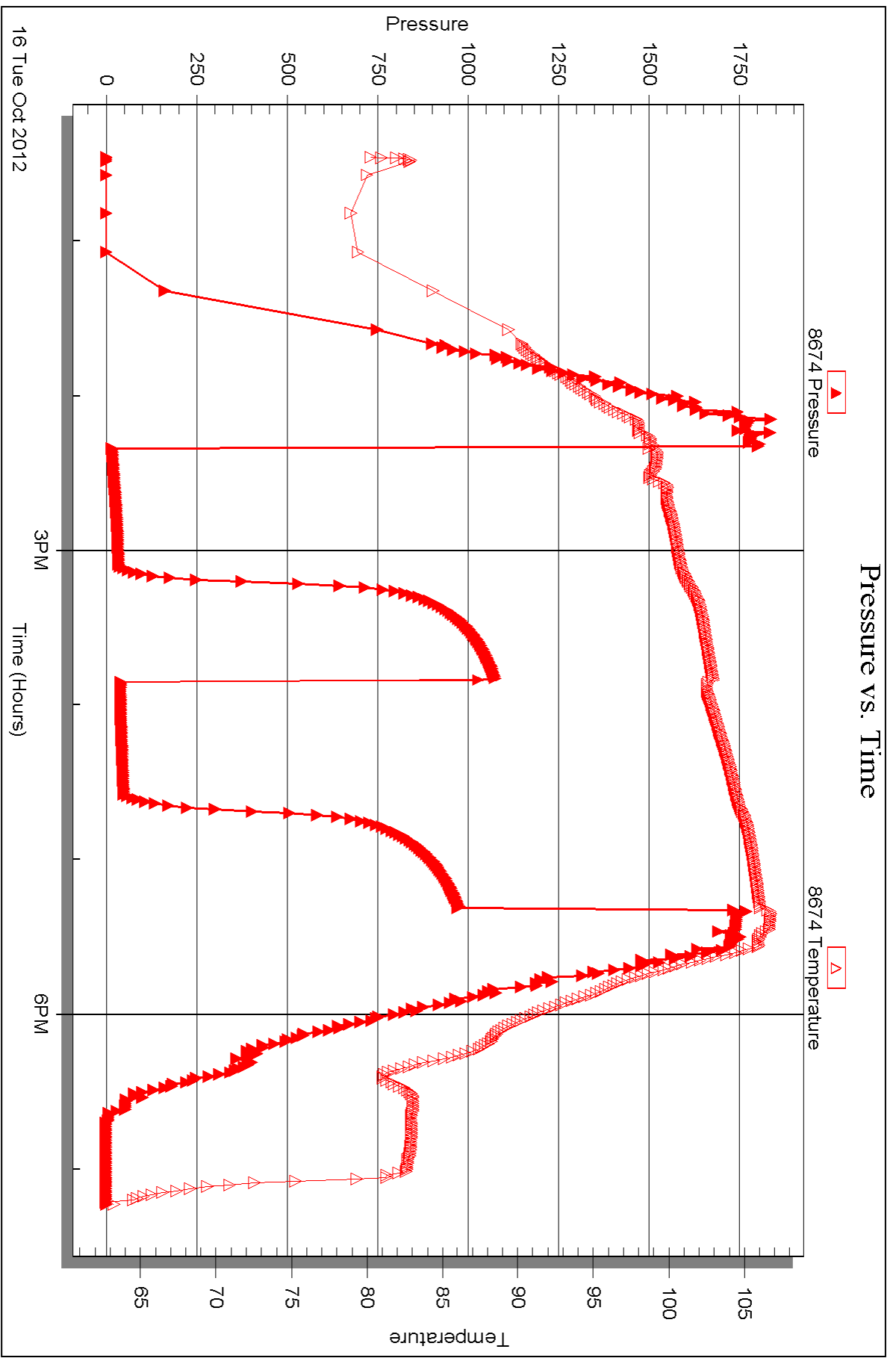
Serial #: 8674

Inside

H&C Oil Operations

Fowler #14-1

DST Test Number: 2





DRILL STEM TEST REPORT

Prepared For: **H&C Oil Operations**

Box 86
Plainville KS 67663

ATTN: Charles Ramsey

Fowler #14-1

14-7s-25w Graham,KS

Start Date: 2012.10.17 @ 09:36:15

End Date: 2012.10.17 @ 17:09:15

Job Ticket #: 48667 DST #: 3

Trilobite Testing, Inc

PO Box 362 Hays, KS 67601

ph: 785-625-4778 fax: 785-625-5620

Printed: 2012.10.18 @ 14:30:20



**TRILOBITE
TESTING, INC.**

DRILL STEM TEST REPORT

H&C Oil Operations

14-7s-25w Graham,KS

Box 86
Plainville KS 67663

Fowler #14-1

Job Ticket: 48667

DST#: 3

ATTN: Charles Ramsey

Test Start: 2012.10.17 @ 09:36:15

GENERAL INFORMATION:

Formation: **Lansing H-J**

Deviated: No Whipstock: ft (KB)

Time Tool Opened: 11:26:45

Time Test Ended: 17:09:15

Test Type: Conventional Bottom Hole (Real-Time)

Tester: Paul Simpson

Unit No: 58

Interval: 3728.00 ft (KB) To 3798.00 ft (KB) (TVD)

Reference Elevations: 2353.00 ft (KB)

Total Depth: 3798.00 ft (KB) (TVD)

2348.00 ft (CF)

Hole Diameter: 7.88 inches Hole Condition: Good

KB to GR/CF: 5.00 ft

Serial #: 8355 Outside

Press @ Run Depth: 503.05 psig @ 3733.00 ft (KB)

Capacity: 8000.00 psig

Start Date: 2012.10.17 End Date: 2012.10.17

Last Calib.: 2012.10.17

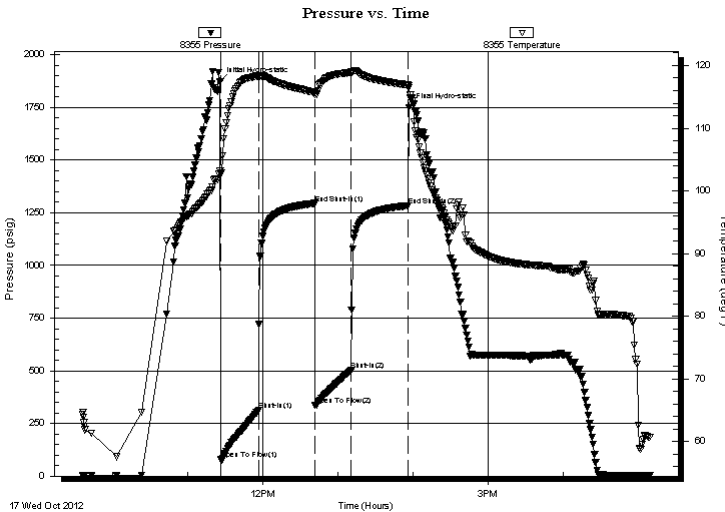
Start Time: 09:36:20 End Time: 17:09:14

Time On Btm: 2012.10.17 @ 11:26:00

Time Off Btm: 2012.10.17 @ 13:56:45

TEST COMMENT: 30- IF 1" blow building to bottom of bucket in 4 minutes
45- ISI weak surface blow
30- FF surface blow building to bottom of bucket in 5 minutes
45- FSI surface blow built to 3/4"

PRESSURE SUMMARY



Time (Min.)	Pressure (psig)	Temp (deg F)	Annotation
0	1871.95	103.22	Initial Hydro-static
1	78.66	102.75	Open To Flow (1)
31	314.31	118.28	Shut-In(1)
76	1295.21	115.71	End Shut-In(1)
76	335.55	115.36	Open To Flow (2)
105	503.05	118.83	Shut-In(2)
150	1284.29	116.88	End Shut-In(2)
151	1748.89	116.85	Final Hydro-static

Recovery

Length (ft)	Description	Volume (bbl)
1240.00	oil and water and mud	17.39
0.00	300' gas in pipe	0.00
0.00	Rw .17 @ 62 = 52000ppm	0.00
0.00	gravity 31@60=31	0.00

Gas Rates

Choke (inches)	Pressure (psig)	Gas Rate (Mcf/d)



**TRILOBITE
TESTING, INC.**

DRILL STEM TEST REPORT

TOOL DIAGRAM

H&C Oil Operations

14-7s-25w Graham,KS

Box 86
Plainville KS 67663

Fowler #14-1

Job Ticket: 48667

DST#: 3

ATTN: Charles Ramsey

Test Start: 2012.10.17 @ 09:36:15

Tool Information

Drill Pipe:	Length: 3714.00 ft	Diameter: 3.80 inches	Volume: 52.10 bbl	Tool Weight: 2500.00 lb
Heavy Wt. Pipe:	Length: 0.00 ft	Diameter: 0.00 inches	Volume: 0.00 bbl	Weight set on Packer: 20000.00 lb
Drill Collar:	Length: 0.00 ft	Diameter: 2.25 inches	Volume: 0.00 bbl	Weight to Pull Loose: 50000.00 lb
			<u>Total Volume: 52.10 bbl</u>	Tool Chased ft
Drill Pipe Above KB:	6.00 ft			String Weight: Initial 42000.00 lb
Depth to Top Packer:	3728.00 ft			Final 49000.00 lb
Depth to Bottom Packer:	ft			
Interval between Packers:	100.00 ft			
Tool Length:	120.00 ft			
Number of Packers:	2	Diameter: 6.75 inches		

Tool Comments:

Tool Description

Tool Description	Length (ft)	Serial No.	Position	Depth (ft)	Accum. Lengths
Change Over Sub	1.00			3709.00	
Shut In Tool	5.00			3714.00	
Hydraulic tool	5.00			3719.00	
Packer	5.00			3724.00	20.00 Bottom Of Top Packer
Packer	4.00			3728.00	
Stubb	1.00			3729.00	
perforations	3.00			3732.00	
change Over Sub	1.00			3733.00	
Recorder	0.00	8355	Outside	3733.00	
Recorder	0.00	8674	Inside	3733.00	
Blank Spacing	61.00			3794.00	
Change Over Sub	1.00			3795.00	
perforations	30.00			3825.00	
Bullnose	3.00			3828.00	100.00 Bottom Packers & Anchor

Total Tool Length: 120.00



**TRILOBITE
TESTING, INC.**

DRILL STEM TEST REPORT

FLUID SUMMARY

H&C Oil Operations

14-7s-25w Graham,KS

Box 86
Plainville KS 67663

Fowler #14-1

Job Ticket: 48667

DST#: 3

ATTN: Charles Ramsey

Test Start: 2012.10.17 @ 09:36:15

Mud and Cushion Information

Mud Type: Gel Chem

Cushion Type:

Oil API:

31 deg API

Mud Weight: lb/gal

Cushion Length:

ft

Water Salinity:

52000 ppm

Viscosity: sec/qt

Cushion Volume:

bbbl

Water Loss: in³

Gas Cushion Type:

Resistivity: ohm.m

Gas Cushion Pressure:

psig

Salinity: ppm

Filter Cake: inches

Recovery Information

Recovery Table

Length ft	Description	Volume bbl
1240.00	oil and water and mud	17.394
0.00	300' gas in pipe	0.000
0.00	Rw .17 @ 62 = 52000ppm	0.000
0.00	gravity 31 @60=31	0.000

Total Length: 1240.00 ft Total Volume: 17.394 bbl

Num Fluid Samples: 0

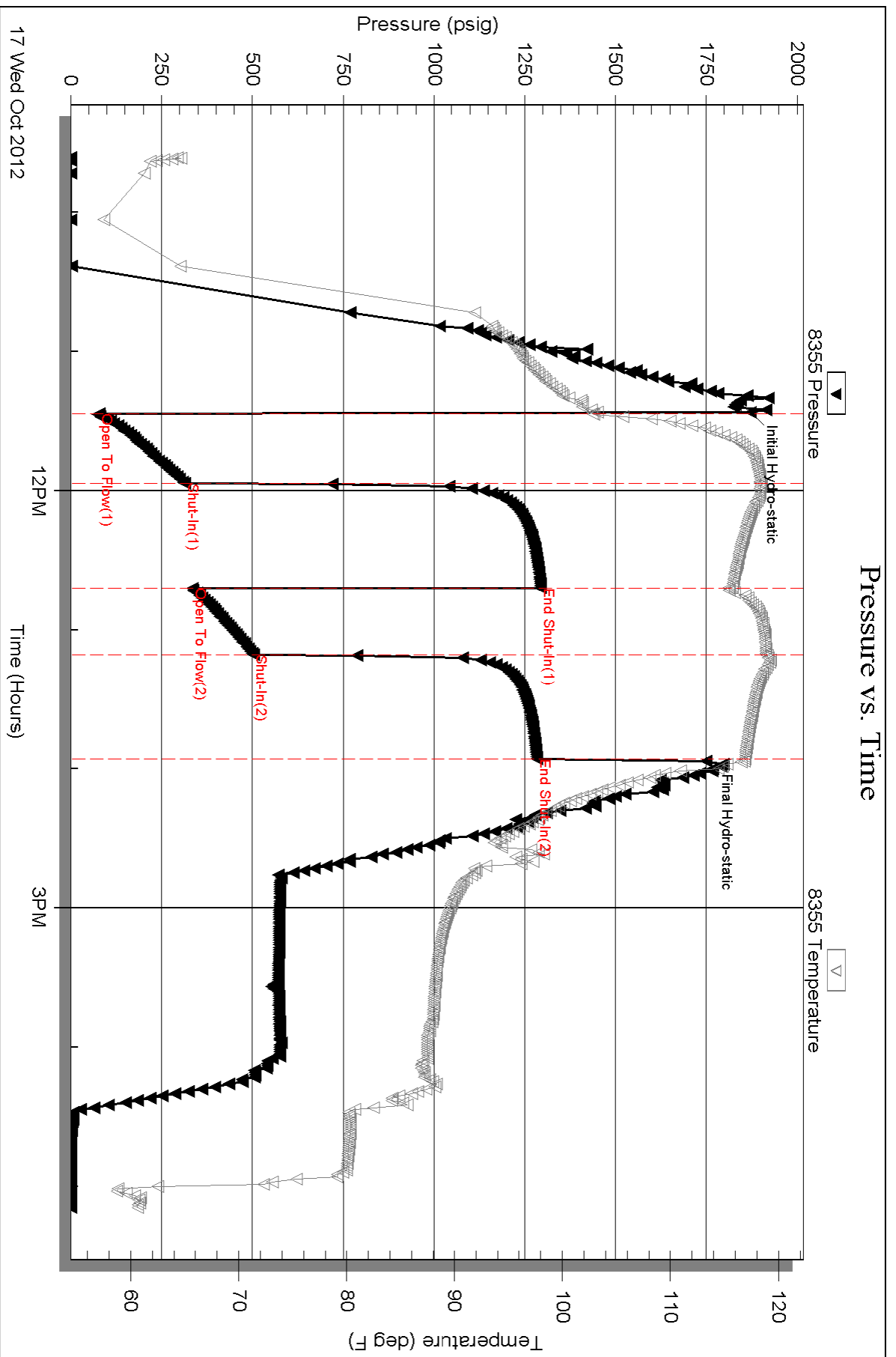
Num Gas Bombs: 0

Serial #:

Laboratory Name:

Laboratory Location:

Recovery Comments: reversed out 12 bbl of fluid into water truck dumped approx 4 bbl of muddy water into pit. truck had 8 bbl of oil when it left location



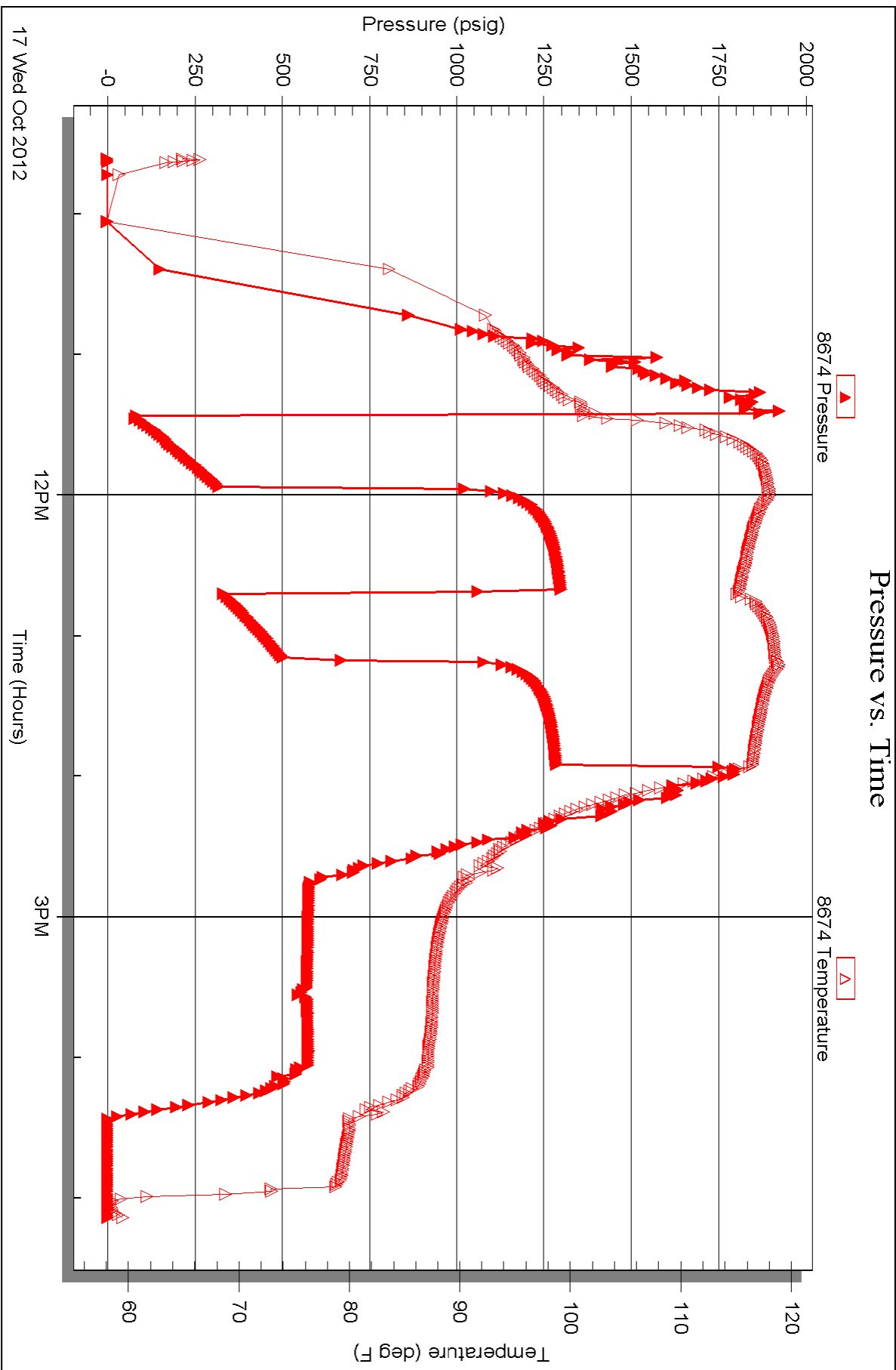
Serial #: 8674

Inside

H&C Oil Operations

Fowler #14-1

DST Test Number: 3





TRILOBITE TESTING INC.

P.O. Box 1733 • Hays, Kansas 67601

Test Ticket

NO. 48665

Well Name & No. Bangle 14-1 Test No. 1 Date 10/15/12
 Company _____ Elevation _____ KB _____ GL _____
 Address Box 86 Plainville Ks 67863
 Co. Rep / Geo. More Dawkins Rig Amerson Eagle #3
 Location: Sec. 14 Twp. 3s Rge. 25 W Co. Graham State Ks

Interval Tested 3648 - 3650 Zone Tested Lansing
 Anchor Length 22 Drill Pipe Run 3640 Mud Wt. 8.9
 Top Packer Depth 3643 Drill Collars Run _____ Vis 61
 Bottom Packer Depth 3648 Wt. Pipe Run _____ WL _____
 Total Depth 3650 Chlorides _____ ppm System LCM _____
 Blow Description Tool slip ft when opening 3" blow decreasing
to 3/4" ft - weak 3/4" blow

Rec	Feet of	%gas	%oil	%water	%mud
<u>30</u>	<u>Mud</u>				
_____	_____				
_____	_____				
_____	_____				
_____	_____				

Rec Total _____ BHT _____ Gravity _____ API RW _____ @ _____ °F Chlorides _____ ppm

(A) Initial Hydrostatic 1870 Test 1150 T-On Location 2100
 (B) First Initial Flow 33 Jars _____ T-Started 2145
 (C) First Final Flow 32 Safety Joint _____ T-Open 2358
 (D) Initial Shut-In 259 Circ Sub _____ T-Pulled 0253
 (E) Second Initial Flow 33 Hourly Standby _____ T-Out 0436
 (F) Second Final Flow 32 Mileage 126 RT 195.30 Comments _____
 (G) Final Shut-In 195 Sampler _____
 (H) Final Hydrostatic 1740 Straddle _____
 Ruined Shale Packer _____
 Ruined Packer _____
 Extra Copies _____
 Initial Open 45 Shale Packer _____
 Initial Shut-In 45 Extra Packer _____
 Final Flow 45 Extra Recorder _____
 Final Shut-In 45 Day Standby _____
 Accessibility _____
 Sub Total 1345.30 MP/DST Disc't _____

Approved By _____ Our Representative Paul Simpson
 Trilobite Testing Inc. shall not be liable for damaged of any kind of the property or personnel of the one for whom a test is made, or for any loss suffered or sustained, directly or indirectly, through the use of its equipment, or its statements or opinion concerning the results of any test, tools lost or damaged in the hole shall be paid for at cost by the party for whom the test is made.



TRILOBITE TESTING INC.

P.O. Box 1733 • Hays, Kansas 67601

Test Ticket

NO. 48666

4/10

Well Name & No. Bangle 1-14 Test No. 2 Date 10/16/12
 Company ADC Oil Operators Elevation _____ KB _____ GL _____
 Address _____
 Co. Rep / Geo. Marc Downing Rig A E #3
 Location: Sec. _____ Twp. _____ Rge. _____ Co. _____ State _____

Interval Tested 3669-3691 Zone Tested KC D
 Anchor Length 22 Drill Pipe Run _____ Mud Wt. 9.3
 Top Packer Depth 3664 Drill Collars Run _____ Vis C1
 Bottom Packer Depth 3669 Wt. Pipe Run _____ WL 818
 Total Depth 3691 Chlorides _____ ppm System LCM 1
 Blow Description Weak 1/2" blow builds to 6"
IST NO blow
FF weak surface blow building to 1 1/2"
FSI - no blow

Rec	Feet of	%gas	%oil	%water	%mud
<u>40</u>	<u>OCM</u>				
<u>80</u>	<u>thick heavy oil</u>				
Rec	Feet of	%gas	%oil	%water	%mud
Rec	Feet of	%gas	%oil	%water	%mud
Rec	Feet of	%gas	%oil	%water	%mud

Rec Total 120 BHT _____ Gravity _____ API RW _____ @ _____ °F Chlorides _____ ppm

(A) Initial Hydrostatic Test 1150 T-On Location 1215
 (B) First Initial Flow Jars _____ T-Started 1220
 (C) First Final Flow Safety Joint _____ T-Open 1421
 (D) Initial Shut-In Circ Sub _____ T-Pulled 1721
 (E) Second Initial Flow Hourly Standby _____ T-Out _____
 (F) Second Final Flow Mileage 126 195.30 Comments _____
 (G) Final Shut-In Sampler _____
 (H) Final Hydrostatic Straddle _____ Ruined Shale Packer _____
 Shale Packer _____ Ruined Packer _____
 Initial Open 45 Extra Packer _____ Extra Copies _____
 Initial Shut-In 45 Extra Recorder _____ Sub Total 0
 Final Flow 45 Day Standby _____ Total 1345.30
 Final Shut-In 45 Accessibility _____ MP/DST Disc't _____
 Sub Total 1345.30

Approved By _____ Our Representative Paul Simpson

Trilobite Testing Inc. shall not be liable for damaged of any kind of the property or personnel of the one for whom a test is made, or for any loss suffered or sustained, directly or indirectly, through the use of its equipment, or its statements or opinion concerning the results of any test, tools lost or damaged in the hole shall be paid for at cost by the party for whom the test is made.



TRILOBITE TESTING INC.

P.O. Box 1733 • Hays, Kansas 67601

Test Ticket

NO. 48667

Well Name & No. Bonsle 14-1 Test No. 3 Date 10/17/12
 Company H & C Elevation 2353 KB 2348 GL
 Address _____
 Co. Rep / Geo. Marc Powning Rig AK #3
 Location: Sec. _____ Twp. _____ Rge. _____ Co. _____ State _____

Interval Tested 3728-3798 Zone Tested LKC H-5

Anchor Length 70 Drill Pipe Run _____ Mud Wt. _____

Top Packer Depth 3723 Drill Collars Run _____ Vis _____

Bottom Packer Depth 3728 Wt. Pipe Run _____ WL _____

Total Depth 3798 Chlorides _____ ppm System LCM _____

Blow Description 1" blow building to bottom of bucket in 4 minutes

ISI - weak surface blow

FF - surface blow building to bottom of bucket in 5 minutes

FSI weak surface blow

Rec 1240 Feet of oil mud water %gas %oil %water %mud

Rec 300 Feet of GIP %gas %oil %water %mud

Rec _____ Feet of reversed into 1/4 %gas %oil %water %mud

Rec _____ Feet of dumped 4 BBL muddy water %gas %oil %water %mud

Rec _____ Feet of still had 8 BBL of oil %gas %oil %water %mud

Rec Total 1240 BHT _____ Gravity 31 API RW 17 @ 62 °F Chlorides _____ ppm

(A) Initial Hydrostatic 1851 Test 1150 T-On Location 0910

(B) First Initial Flow 79 Jars _____ T-Started 0936

(C) First Final Flow 314 Safety Joint _____ T-Open 1125

(D) Initial Shut-In 1295 Circ Sub _____ 50 T-Pulled 1355

(E) Second Initial Flow 335 Hourly Standby _____ T-Out _____

(F) Second Final Flow 503 Mileage 12.6 195.30 Comments _____

(G) Final Shut-In 1284 Sampler _____

(H) Final Hydrostatic 1748 Straddle _____ Ruined Shale Packer _____

Initial Open 30 Shale Packer _____ Ruined Packer _____

Initial Shut-In 45 Extra Packer _____ Extra Copies _____

Final Flow 30 Extra Recorder _____ Sub Total 0

Final Shut-In 45 Day Standby _____ Total 1395.30

Approved By _____ Our Representative Paul Singer

TriLOBITE Testing Inc. shall not be liable for damaged of any kind of the property or personnel of the one for whom a test is made, or for any loss suffered or sustained, directly or indirectly, through the use of its equipment, or its statements or opinion concerning the results of any test, tools lost or damaged in the hole shall be paid for at cost by the party for whom the test is made.