

Well location, TRIPLE R FARMS 2408 #15-1HN, located as shown in the SW 1/4 SE 1/4 of Section 15, T24S, R8W, 6th P.M., Reno County, Kansas.

BASIS OF ELEVATION

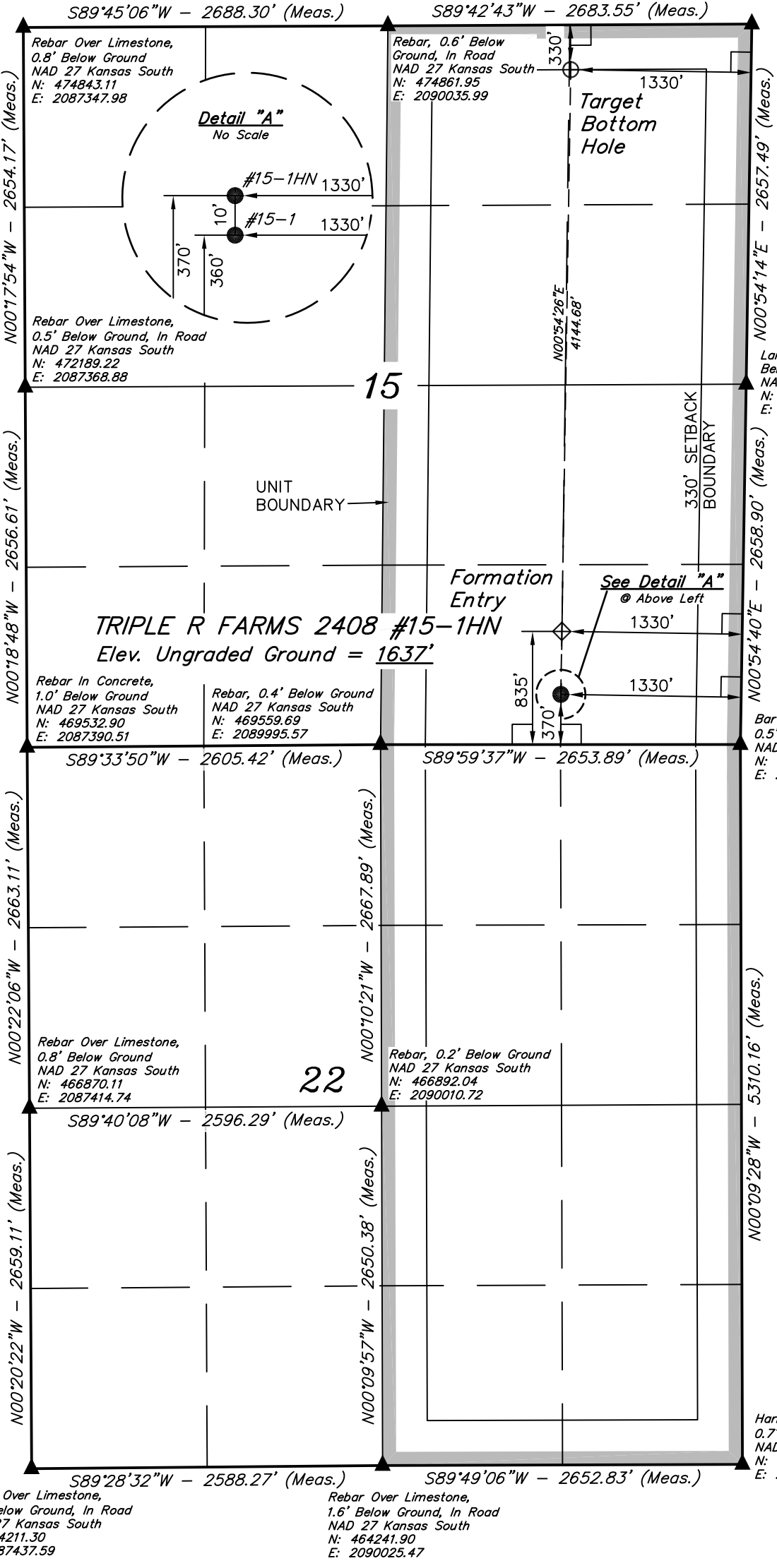
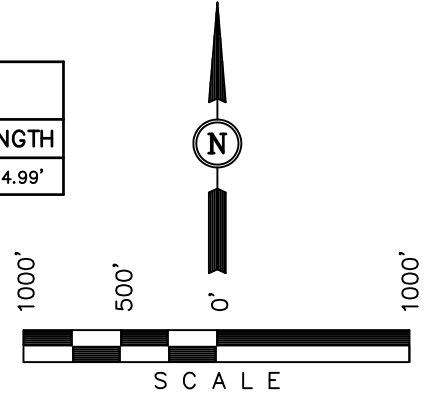
SPOT ELEVATION LOCATED AT THE SOUTHWEST CORNER OF SECTION 18, T23S, R8W, 6th P.M. TAKEN FROM THE ALDEN SE, QUADRANGLE, KANSAS, RENO COUNTY, 7.5 MINUTE QUAD (TOPOGRAPHIC MAP) PUBLISHED BY THE UNITED STATES DEPARTMENT OF THE INTERIOR, GEOLOGICAL SURVEY, SAID ELEVATION IS MARKED AS BEING 1688 FEET.

BASIS OF BEARINGS

BASIS OF BEARINGS IS A G.P.S. OBSERVATION.

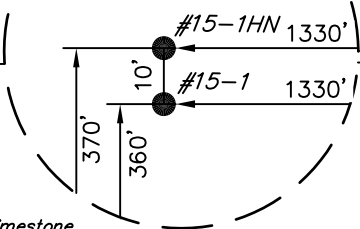
Rebar, 0.7' Below Ground
NAD 27 Kansas South
N: 474882.60
E: 2092719.24

LINE TABLE		
LINE	DIRECTION	LENGTH
L1	N00°55'58"E	464.99'



TRIPLE R FARMS 2408 #15-1HN
Elev. Ungraded Ground = 1637'

Detail "A"
No Scale



Rebar Over Limestone,
0.1' Below Ground, In Road
NAD 27 Kansas South
N: 464211.30
E: 2087437.59

Rebar Over Limestone,
1.6' Below Ground, In Road
NAD 27 Kansas South
N: 464241.90
E: 2090025.47

Harrow Tooth on Limestone,
0.7' Below Ground, In Road
NAD 27 Kansas South
N: 464257.39
E: 2092678.03

CERTIFICATE

THIS IS TO CERTIFY THAT THE ABOVE PLAT WAS PREPARED FROM FIELD NOTES OF ACTUAL SURVEYS MADE BY ME OR UNDER MY SUPERVISION AND THAT THE SAME ARE TRUE AND CORRECT TO THE BEST OF MY KNOWLEDGE AND BELIEF.



- LEGEND:
- └─┘ = 90° SYMBOL
 - = PROPOSED WELL HEAD.
 - ▲ = SECTION CORNERS LOCATED.

UINTAH ENGINEERING & LAND SURVEYING 85 SOUTH 200 EAST - VERNAL, UTAH 84078 (435) 789-1017		
SCALE 1" = 1000'	DATE SURVEYED: 11-21-12	DATE DRAWN: 11-26-12
PARTY C.B. D.W. J.J.	REFERENCES G.L.O. PLAT	
WEATHER COOL	FILE	SGOMI

NAD 83 (#15-1HN TARGET BOTTOM HOLE)	NAD 83 (#15-1HN FORMATION ENTRY)	NAD 83 (#15-1HN SURFACE LOCATION)
LATITUDE = 37°58'10.31" (37.969531) LONGITUDE = 98°10'59.99" (98.183331)	LATITUDE = 37°57'29.34" (37.958150) LONGITUDE = 98°11'00.85" (98.183569)	LATITUDE = 37°57'24.71" (37.956864) LONGITUDE = 98°11'00.90" (98.183583)
NAD 27 (#15-1HN TARGET BOTTOM HOLE)	NAD 27 (#15-1HN FORMATION ENTRY)	NAD 27 (#15-1HN SURFACE LOCATION)
LATITUDE = 37°58'10.26" (37.969517) LONGITUDE = 98°10'58.77" (98.182992)	LATITUDE = 37°57'29.29" (37.958136) LONGITUDE = 98°10'59.63" (98.183231)	LATITUDE = 37°57'24.66" (37.956850) LONGITUDE = 98°10'59.68" (98.183244)
STATE PLANE NAD 27 (KANSAS SOUTH)	STATE PLANE NAD 27 (KANSAS SOUTH)	STATE PLANE NAD 27 (KANSAS SOUTH)
N: 474542.34 E: 2091384.72	N: 470398.12 E: 2091329.97	N: 469929.79 E: 2091327.56