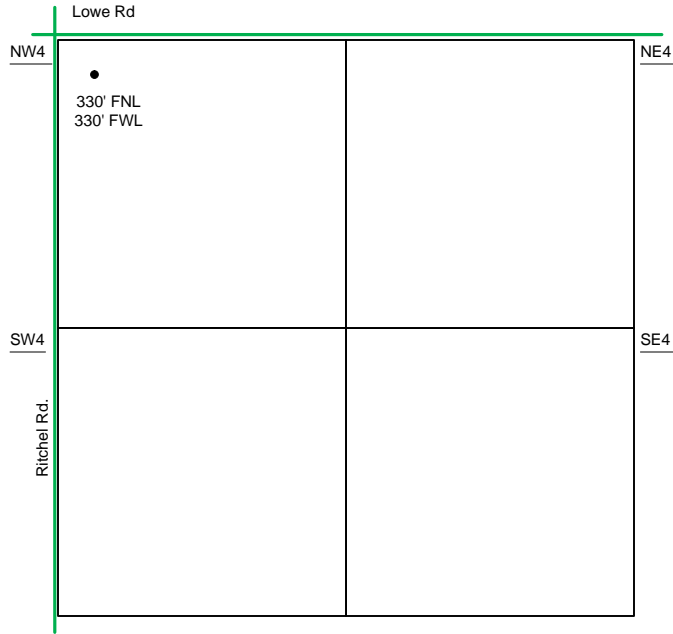


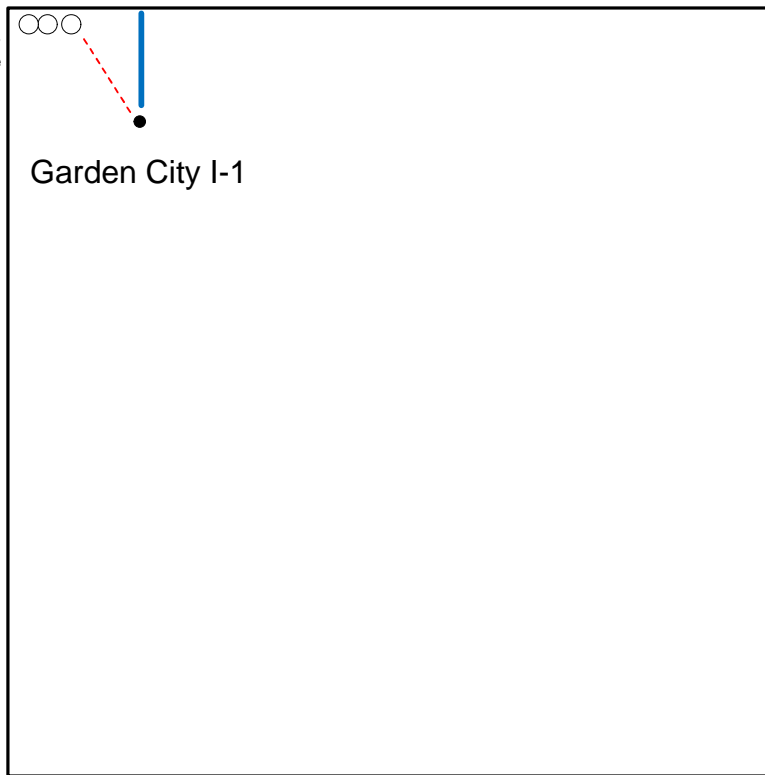
Proposed Plan of Construction
 Garden City I-1
 Sec 26-T23S-R34W
 Stanton County, KS



Sec 26 - T23S - R34W

NW/4

The **PROPOSED** Tank Battery for the Garden City I-1 will be in the NW of the NW quarter.



- Well Location
- Lease Roads
- - - Proposed Pipeline
- Tank Battery Equipment
- Power Lines
- - - Existing Pipeline

Detail of
 NW/4 Sec 26-T23S-R34W

Note-Drawing **Not** to Scale

Site Diagram
 Garden City I-1
 August 22, 2011

