

GEOLOGIST'S REPORT
DRILLING TIME AND SAMPLE LOG

COMPANY Mull Drilling Company, Inc.
 LEASE Fehrenbach Unit #1-21
 FIELD Willard
 LOCATION 1074' F5L & 216' F6L
 SEC. 21 TWP. 17S R. 23W
 COUNTY Ness STATE Kansas
 CONTRACTOR Mull Drilling Co. DATE DRILLING 8/15/12
 DRILLER Phil Askey LITD 4540'
 RWD UP 3793' TYPE RWD Chemical Fluid
 SAMPLES SAVED FROM 3600' TO 420'
 DRILLING TIME KEPT FROM 150'-180', 3600' TO 420'
 SAMPLES EXAMINED FROM 3600' TO 420'
 GEOLOGICAL SUPERVISION FROM 3600' TO 420'
 GEOLOGIST ON WELL Phil Askey, P.G.

FORAMINATION TOPS LOG SAMPLES

Anhydrite	1716	+171	1713	-6.2
Healdsburg	3824	-149	3824	+7.6
Healdsburg	3825	-148	3823	+3.0
Healdsburg	4158	-174	4156	+1.6
Healdsburg	4250	-180	4255	+7.0
Healdsburg	4271	-155	4271	+7.2
Healdsburg	4416	-200	4416	+1.8
Healdsburg	4540	-213	4540	+8.1

PERFORATION LOG SAMPLES

Perforation #1	1713	-6.2
Perforation #2	3824	+7.6
Perforation #3	4156	+1.6
Perforation #4	4255	+7.0
Perforation #5	4271	+7.2
Perforation #6	4416	+1.8
Perforation #7	4540	+8.1

REMARKS

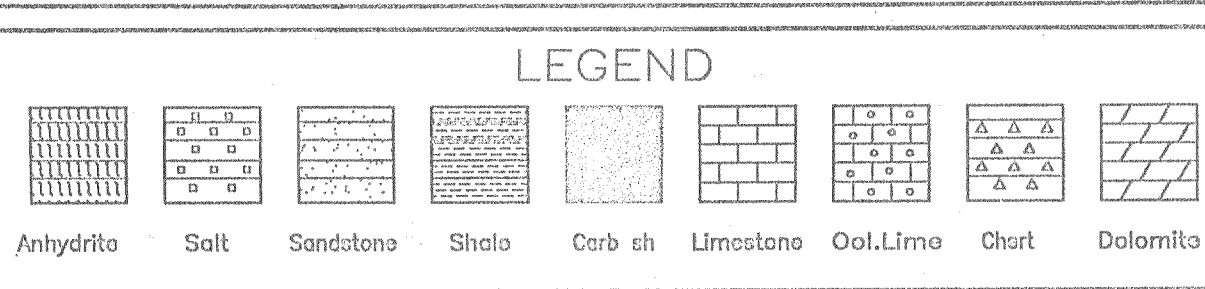
The Mull Drilling Co., Fehrenbach Unit #1-21, ran structurally high to the reference well to the southeast, Mull Drilling, Ryan #1. The character and depth of the development in this test well and the only sample should note observed in the upper Mississippian dolomite section which was covered by 157' of 12" well annular cement.

After review of the E-log, it was decided to plug and abandon this well.

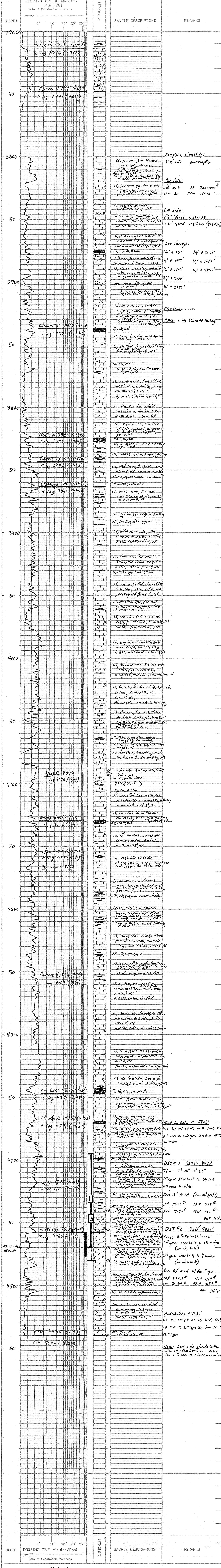
Phil Askey, P.G.

API# 15-135-25933

LEGEND



SCALE " = 100'



COMPANY Mull Drilling Company, Inc. LEASE Fehrenbach Unit #1-21 ELEVATION: 2417' KB
 LOCATION 1074' F5L & 216' F6L SEC. 21 TWP. 17S R. 23W
 COUNTY Ness STATE Kansas