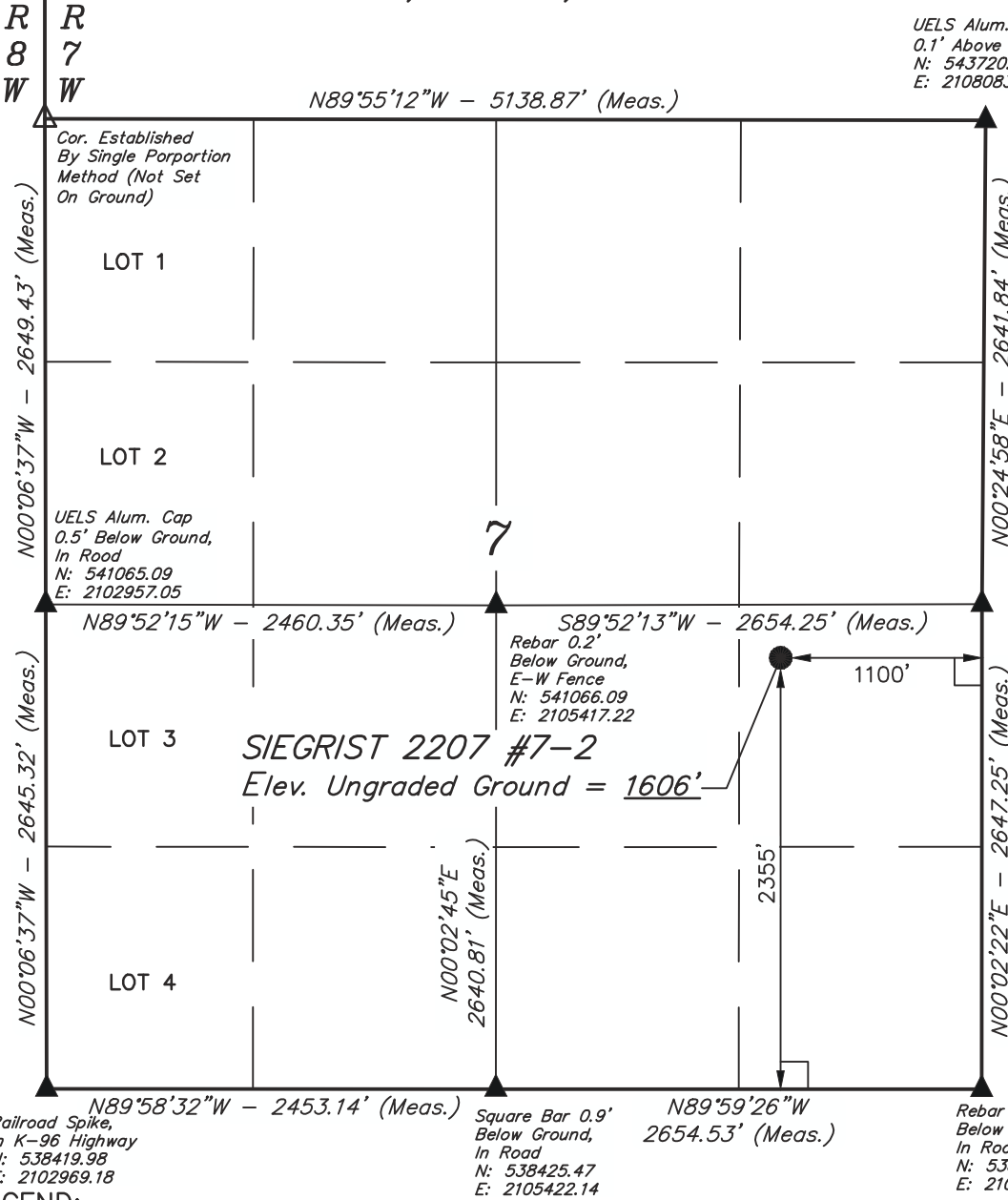


T22S, R7W, 6th P.M.

SGOMI

UELS Alum. Cap
0.1' Above Ground
N: 543720.79
E: 2108083.40

Well location, SIEGRIST 2207 #7-2, located as shown in the NE 1/4 SE 1/4 of SECTION 7, T22S, R7W, 6th P.M., Reno County, Kansas.

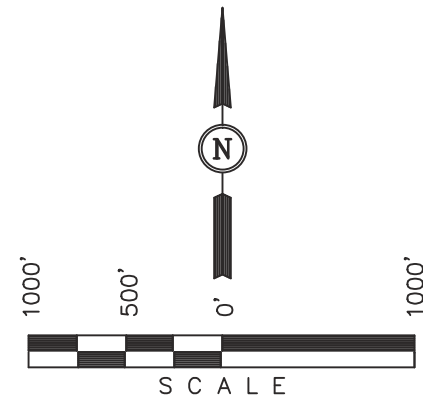


BASIS OF ELEVATION

SPOT ELEVATION LOCATED AT THE SW CORNER OF SECTION 18, T23S, R8W, 6th P.M. TAKEN FROM THE ALDEN SE, QUADRANGLE, KANSAS, RENO COUNTY, 7.5 MINUTE QUAD (TOPOGRAPHIC MAP) PUBLISHED BY THE UNITED STATES DEPARTMENT OF THE INTERIOR, GEOLOGICAL SURVEY, SAID ELEVATION IS MARKED AS BEING 1688 FEET.

BASIS OF BEARINGS

BASIS OF BEARINGS IS A G.P.S. OBSERVATION.



CERTIFICATE

THIS IS TO CERTIFY THAT THE ABOVE PLAT WAS PREPARED FROM FIELD NOTES OF ACTUAL SURVEYS MADE BY ME OR UNDER MY SUPERVISION AND THAT THE SAME ARE TRUE AND CORRECT TO THE BEST OF MY KNOWLEDGE AND BELIEF.

Justin D. Wallace
REGISTERED LAND SURVEYOR
REGISTRATION NO. 1458
STATE OF KANSAS

LEGEND:

- └─┘ = 90° SYMBOL
- = PROPOSED WELL HEAD.
- ▲ = SECTION CORNERS LOCATED.
- △ = SECTION CORNERS RE-ESTABLISHED. (Not Set on Ground.)

NAD 83 (#7-2 SURFACE LOCATION)
LATITUDE = 38°09'04.62" (38.151283)
LONGITUDE = 98°07'42.02" (98.128339)
NAD 27 (#7-2 SURFACE LOCATION)
LATITUDE = 38°09'04.58" (38.151272)
LONGITUDE = 98°07'40.81" (98.128003)
STATE PLANE NAD 27 (KANSAS SOUTH)
N: 540784.00 E: 2106972.02

UINTAH ENGINEERING & LAND SURVEYING		
85 SOUTH 200 EAST - VERNAL, UTAH 84078		
(435) 789-1017		
SCALE 1" = 1000'	DATE SURVEYED: 10-08-12	DATE DRAWN: 10-11-12
PARTY J.P. C.B. C.A.G.	REFERENCES G.L.O. PLAT	
WEATHER HOT	FILE SGOMI	