



# STEVEN P. MURPHY, P.G.

*Petroleum Geologist (KS #228)*

Cell 620.639.3030

Fax 785.387.2400

RR#1, Box 69

Otis, Kansas 67565

geomurphy@gbta.net

Scale 1:240 (5"=100') Imperial  
Measured Depth Log

Well Name: ELLIS #1-20(NW)

Location: Section 20-T30S-R22W Clark County, KS

License Number: API #15-025-21,546-00-00

Spud Date: 9/4/2112

Region: Clark

Drilling Completed: 9/16/2012

Surface Coordinates: 1520' FNL & 690' FWL  
(Approx NW NE SW NW)

Bottom Hole Coordinates: Same as above (Vertical well w/minimal deviation)

Ground Elevation (ft): 2424'

K.B. Elevation (ft): 2434'

Logged Interval (ft): 2650'

To: 4084' (RTD) Total Depth (ft): RTD - 6086' LTD - 6082'

Formation: Chase Group through Mississippian Osage

Type of Drilling Fluid: Chemical/Polymer (Mudco - Mud Engineer Justin Whiting)

Printed by MUD.LOG from WellSight Systems 1-800-447-1534 [www.WellSight.com](http://www.WellSight.com)

## OPERATOR

Company: Falcon Exploration, Inc.

Address: 125 N. Market

Suite 1252

Wichita, KS 67202

## GEOLOGIST

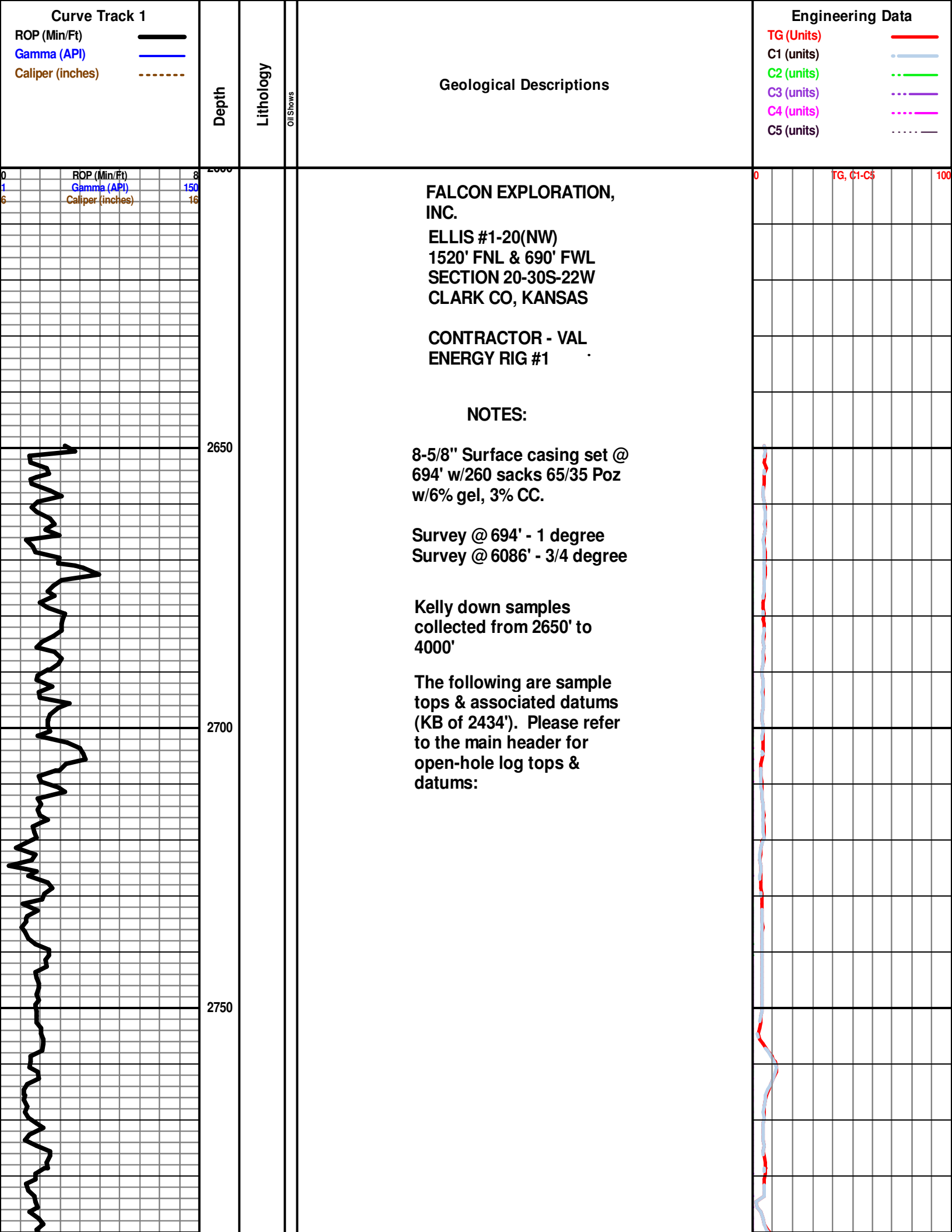
Name: Steven P. Murphy, P.G.

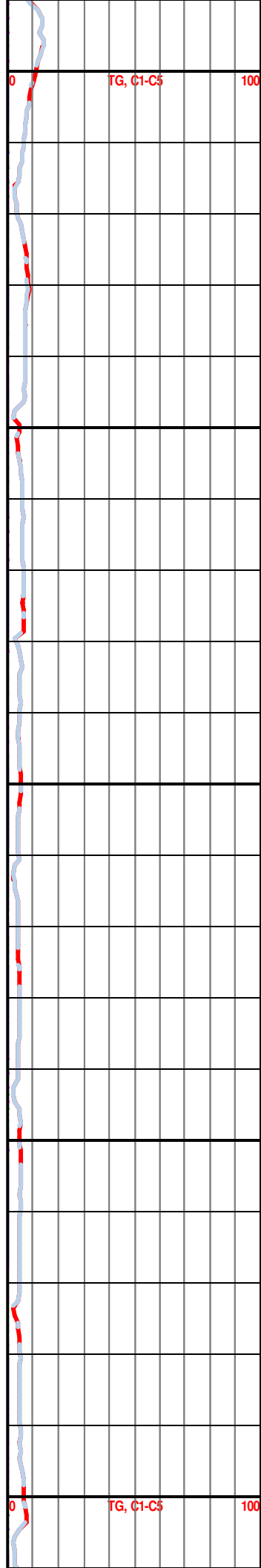
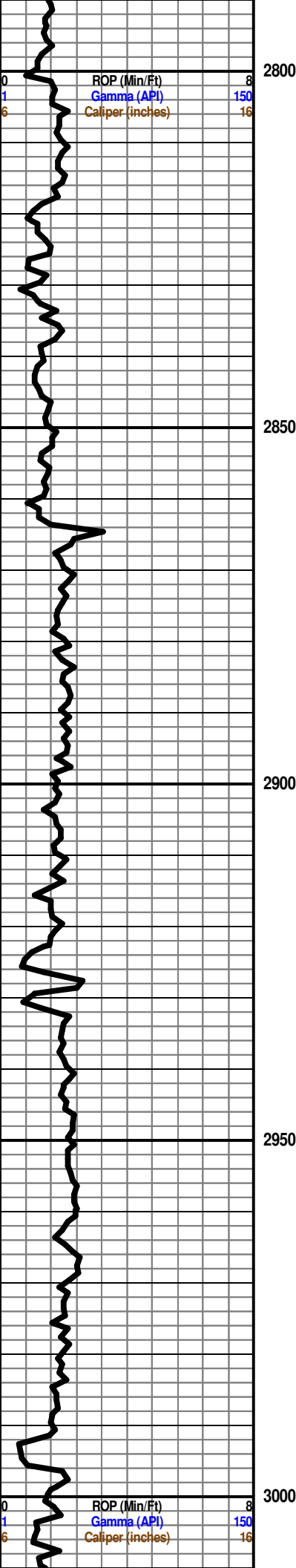
Company: Consulting Petroleum Geologist (KS License #228)

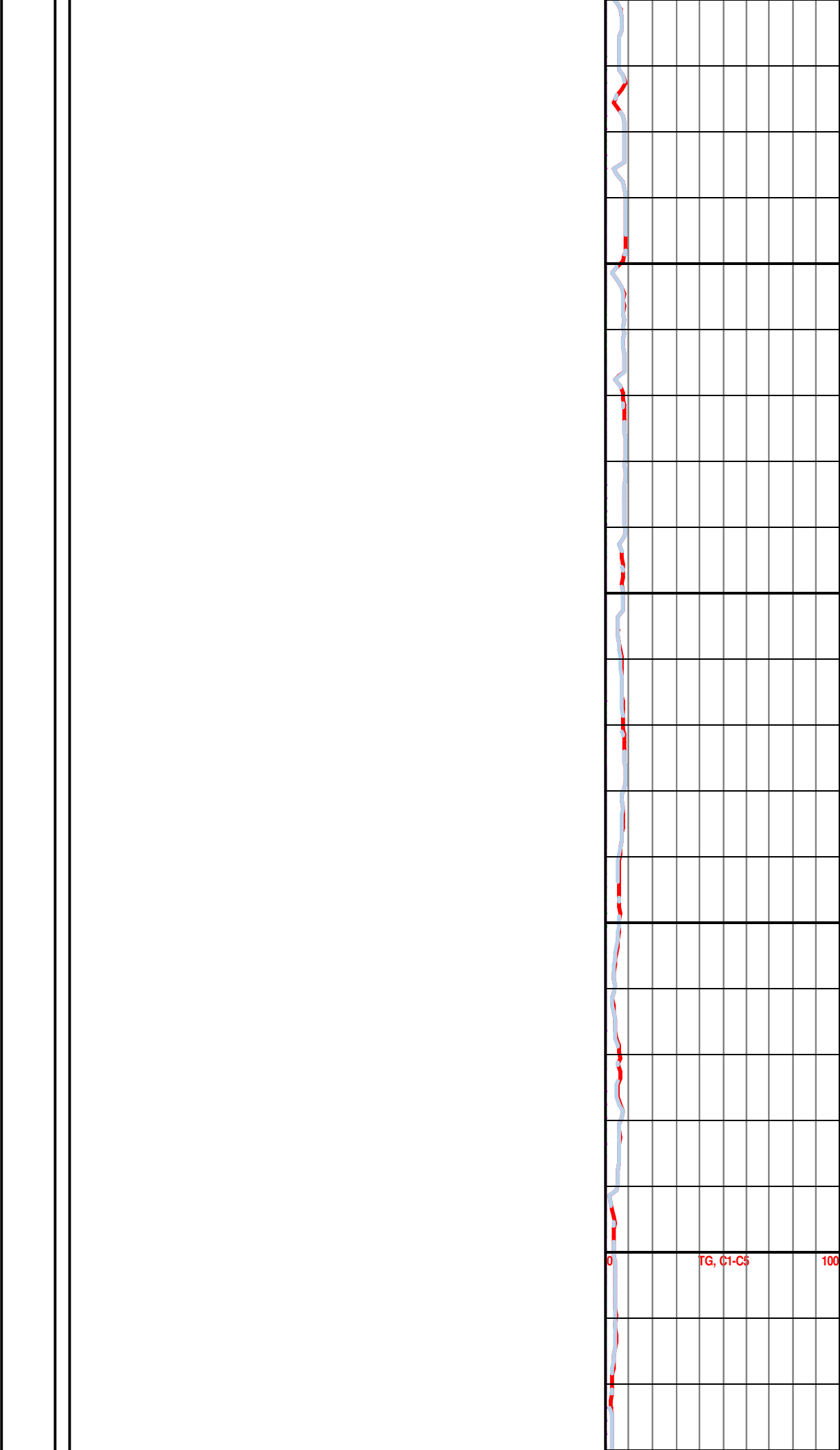
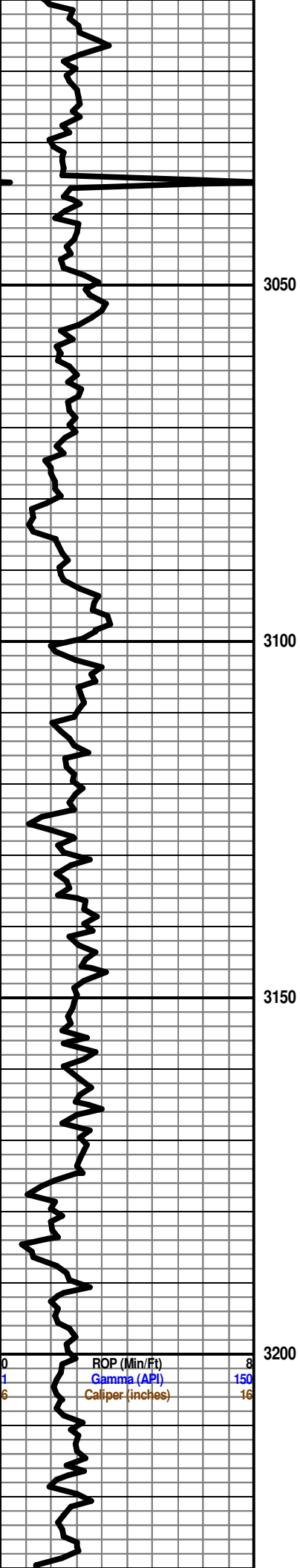
Address: 3365 C.R. 390

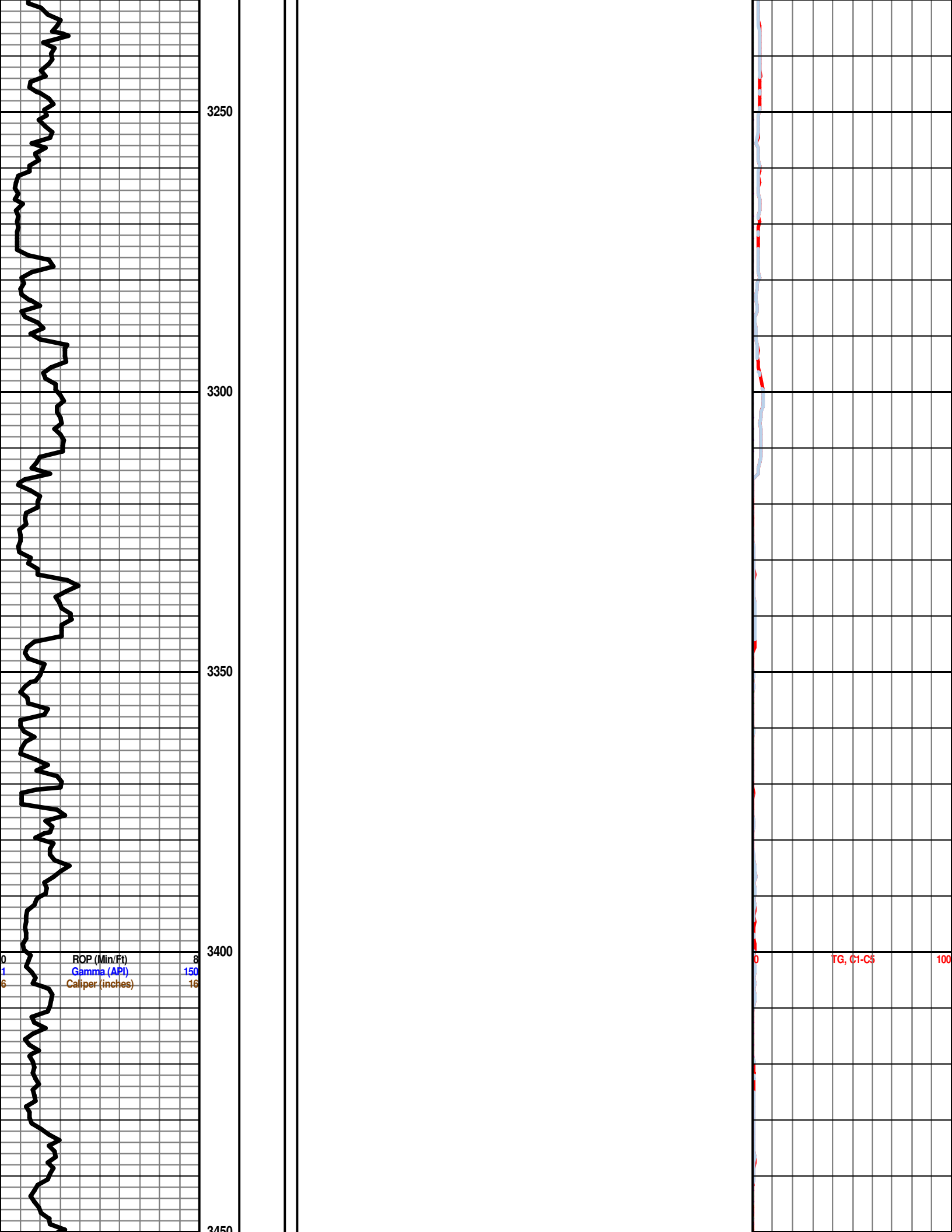
Otis, KS 67565

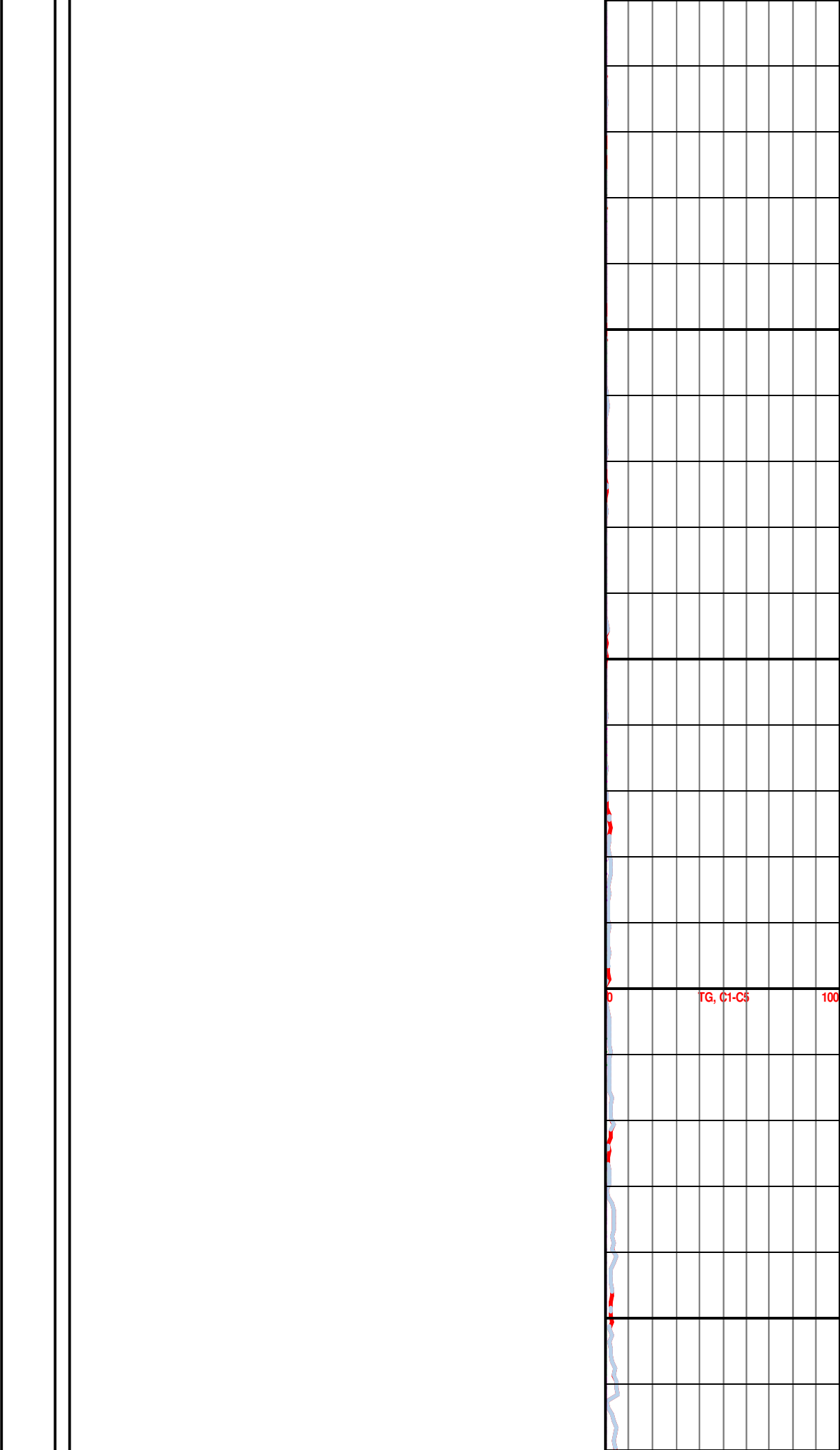
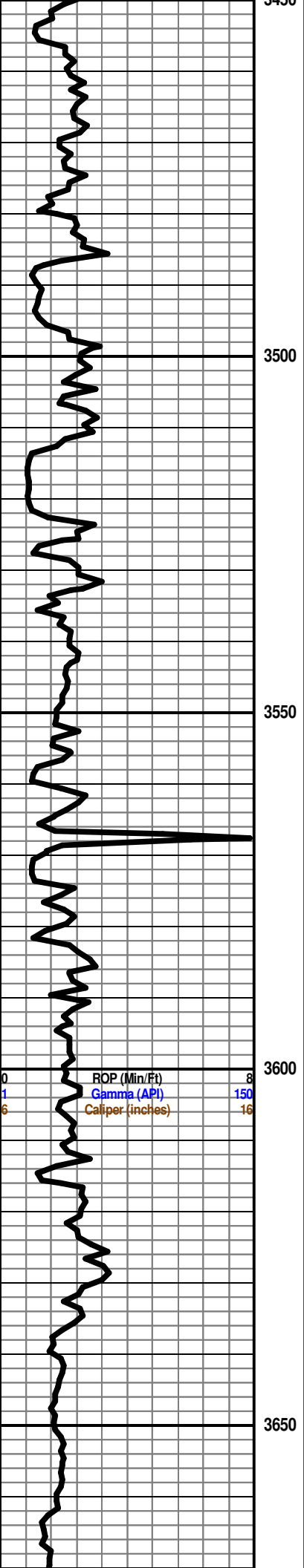


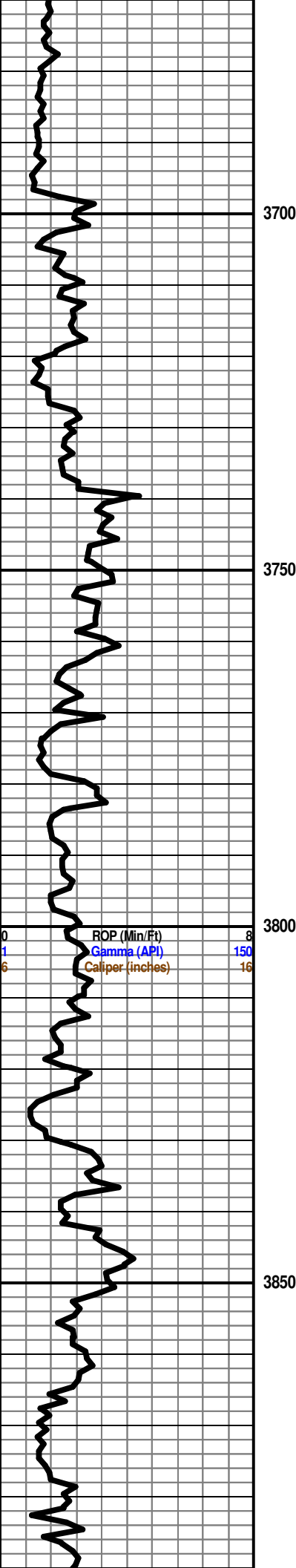




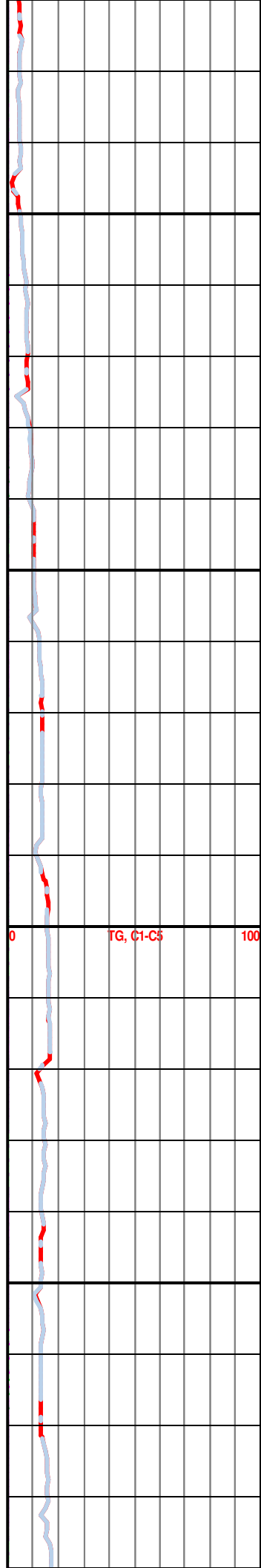




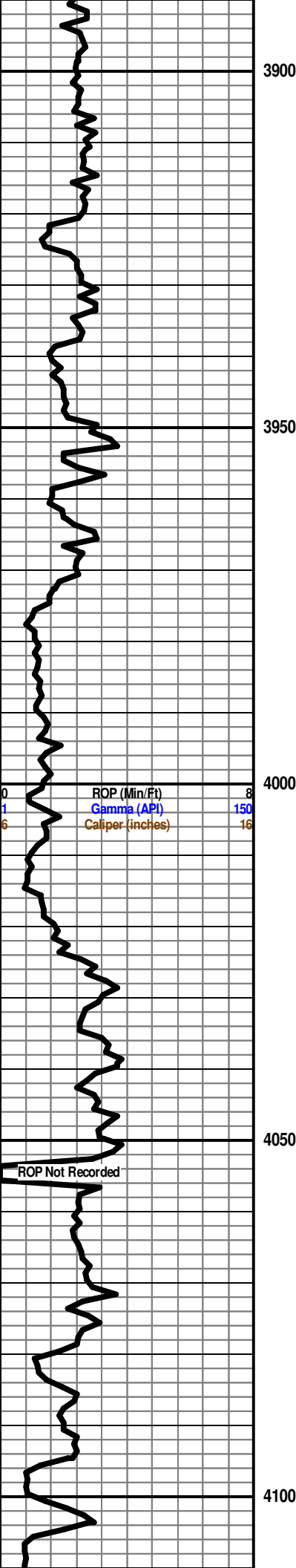




Geologist Steven P. Murphy  
on location @ 7:45 PM  
9/8/2012 @ 3750'







**Begin 10' wet & dry sample examination @ 4000'**

LS: wht-gry, vfxln, dense, sl chalky, foss, NS

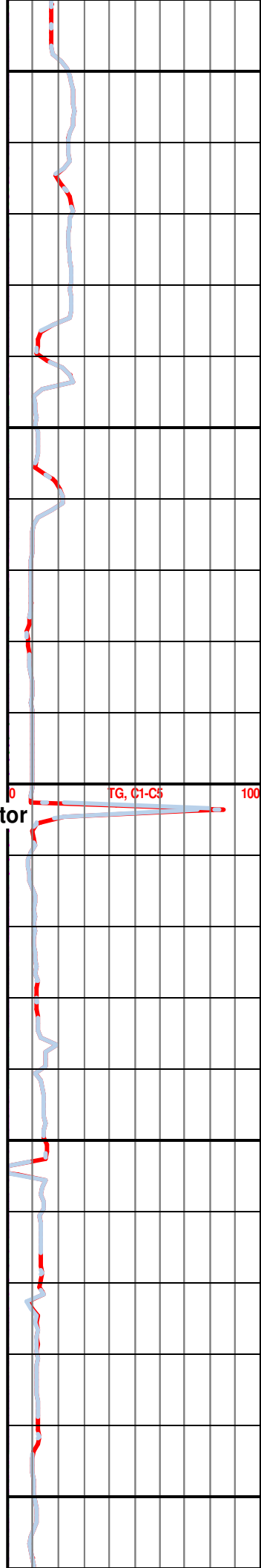
LS: crm-tan-gry, vfxln, foss, chalky, dense, sl mottled, NS

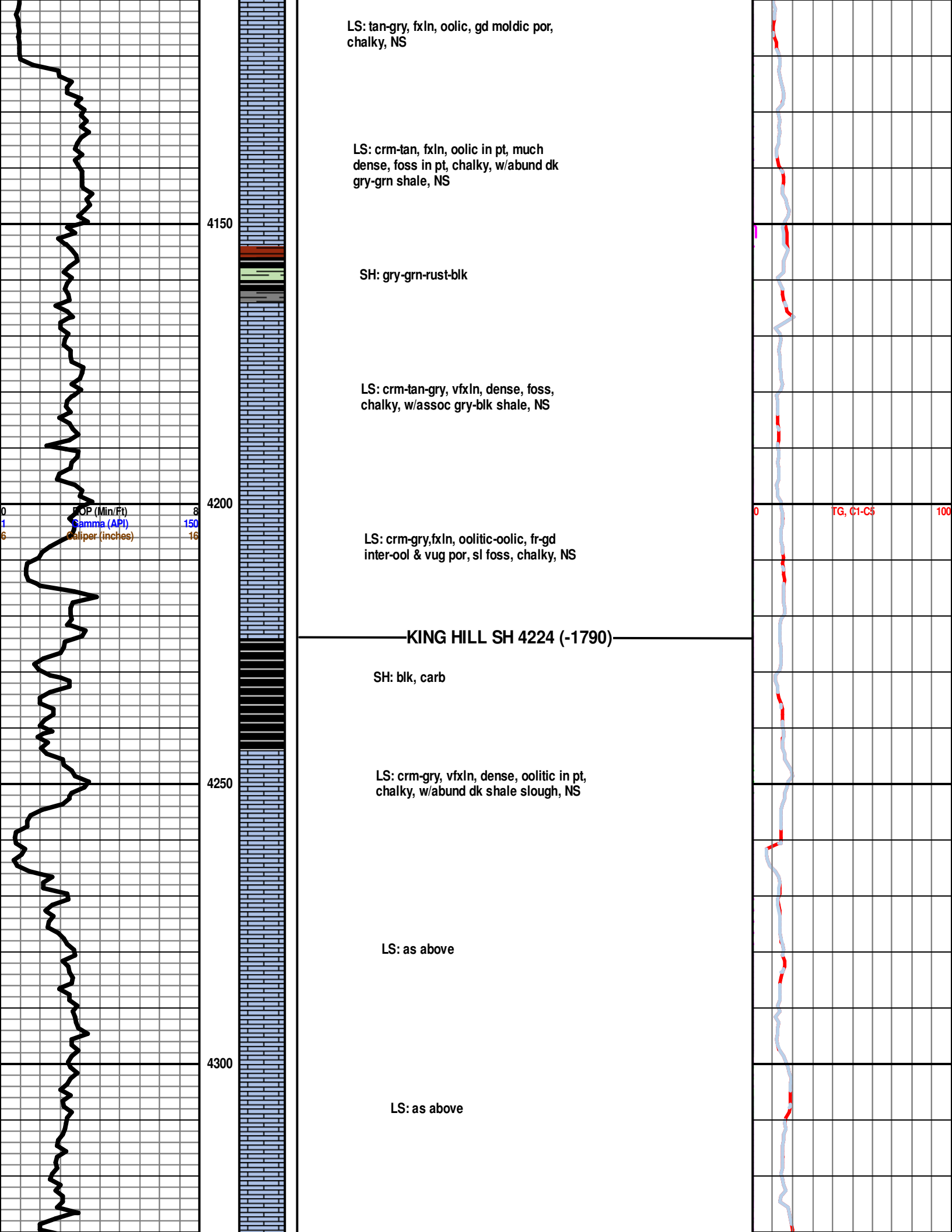
LS: as above

LS: as above w/abund gry-grn-rust shale

LS: tan-gry, vfxln, foss, chalky, dense, mottled in pt, w/abund shale as above

**Test Gas Detector**





LS: tan-gry, fxlIn, oolic, gd moldic por, chalky, NS

LS: crm-tan, fxlIn, oolic in pt, much dense, foss in pt, chalky, w/abund dk gry-grn shale, NS

SH: gry-grn-rust-blk

LS: crm-tan-gry, vfxIn, dense, foss, chalky, w/assoc gry-blk shale, NS

LS: crm-gry, fxlIn, oolitic-oolic, fr-gd inter-ool & vug por, sl foss, chalky, NS

**KING HILL SH 4224 (-1790)**

SH: blk, carb

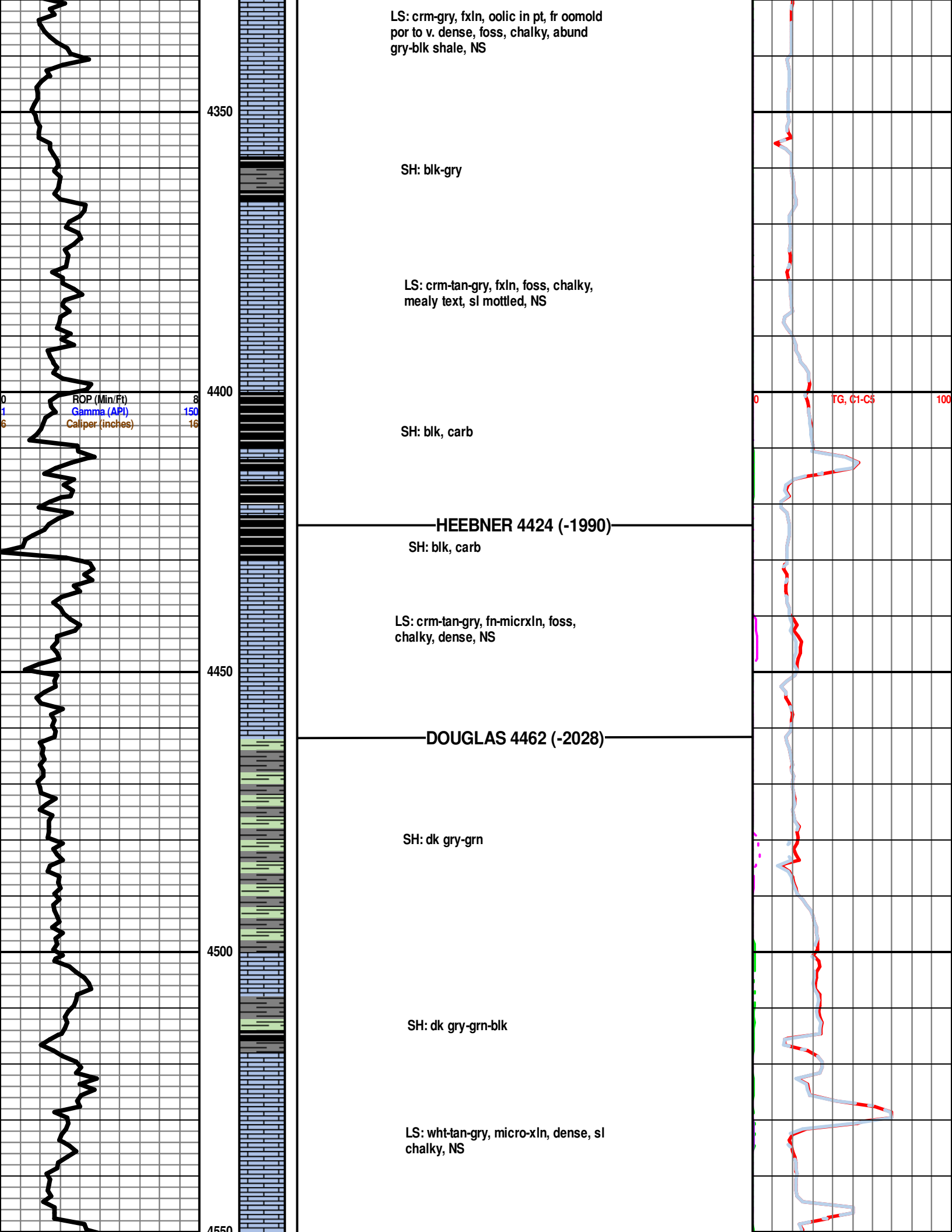
LS: crm-gry, vfxIn, dense, oolitic in pt, chalky, w/abund dk shale slough, NS

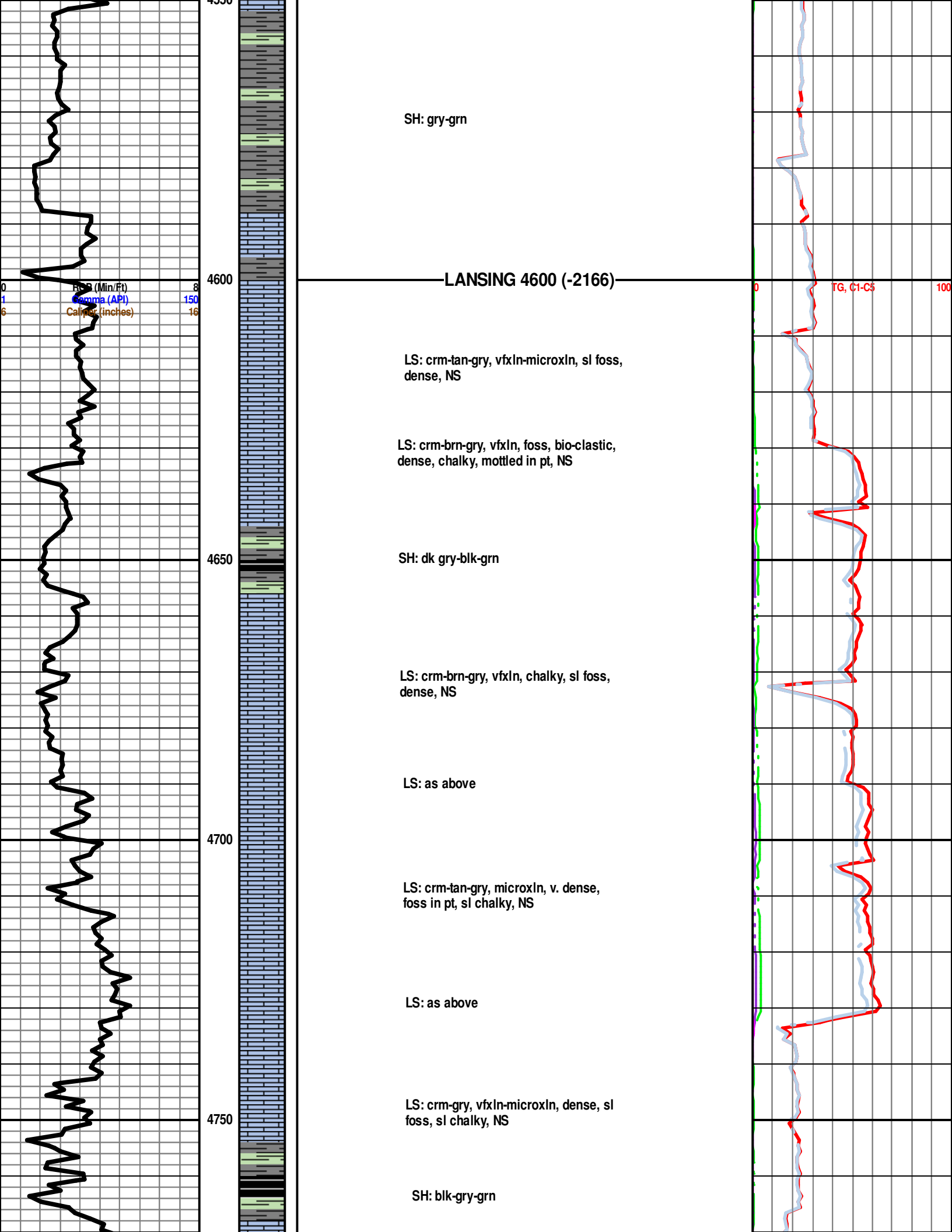
LS: as above

LS: as above

0 Por (Min/Ft) 8  
 1 Gamma (API) 150  
 6 Caliper (inches) 16

0 TG, C1-C5 100





SH: gry-grn

LANSING 4600 (-2166)

LS: crm-tan-gry, vfxln-microxln, sl foss, dense, NS

LS: crm-brn-gry, vfxln, foss, bio-clastic, dense, chalky, mottled in pt, NS

SH: dk gry-blk-grn

LS: crm-brn-gry, vfxln, chalky, sl foss, dense, NS

LS: as above

LS: crm-tan-gry, microxln, v. dense, foss in pt, sl chalky, NS

LS: as above

LS: crm-gry, vfxln-microxln, dense, sl foss, sl chalky, NS

SH: blk-gry-grn

TG, C1-C5

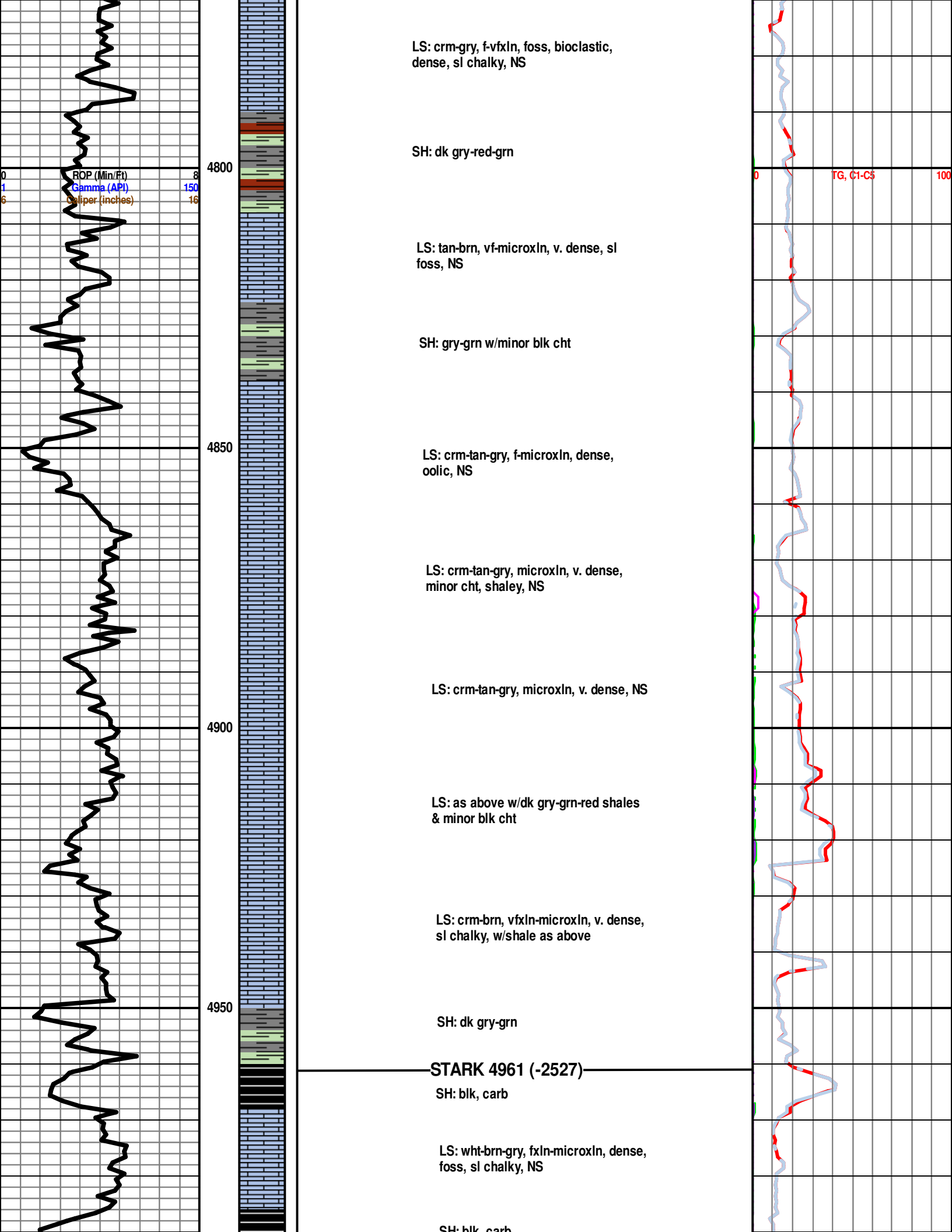
0

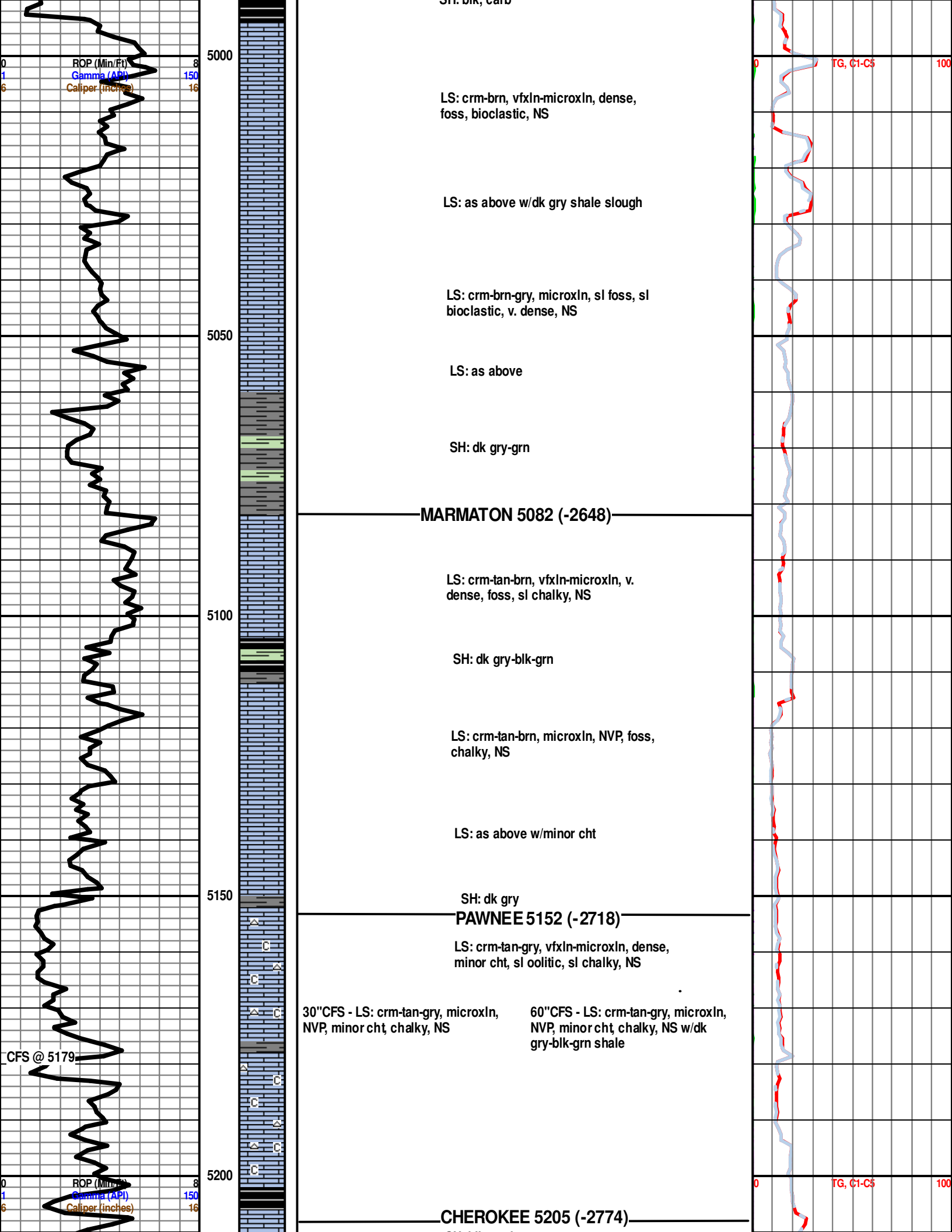
100

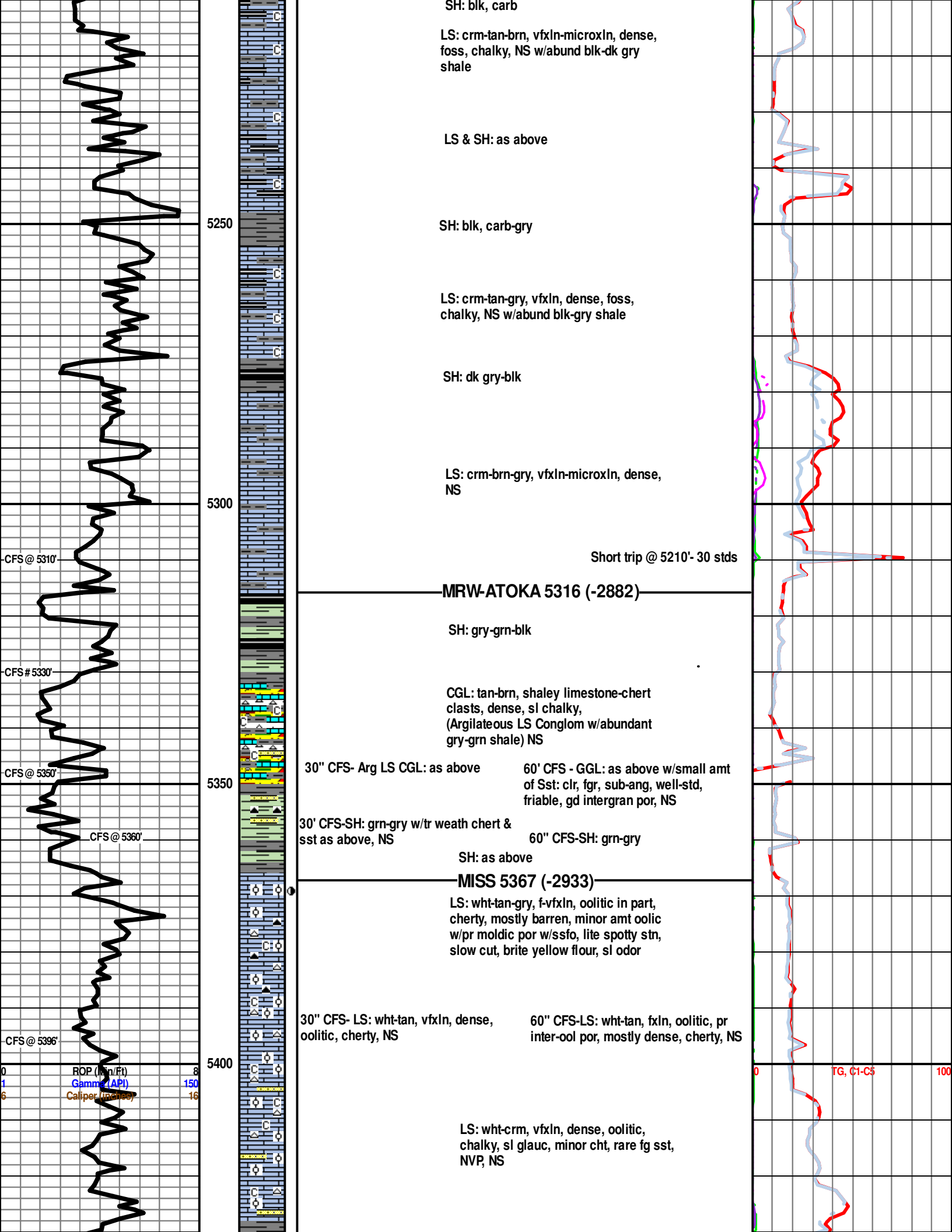
RSP (Min/Ft)  
Gamma (API)  
Caliper (inches)

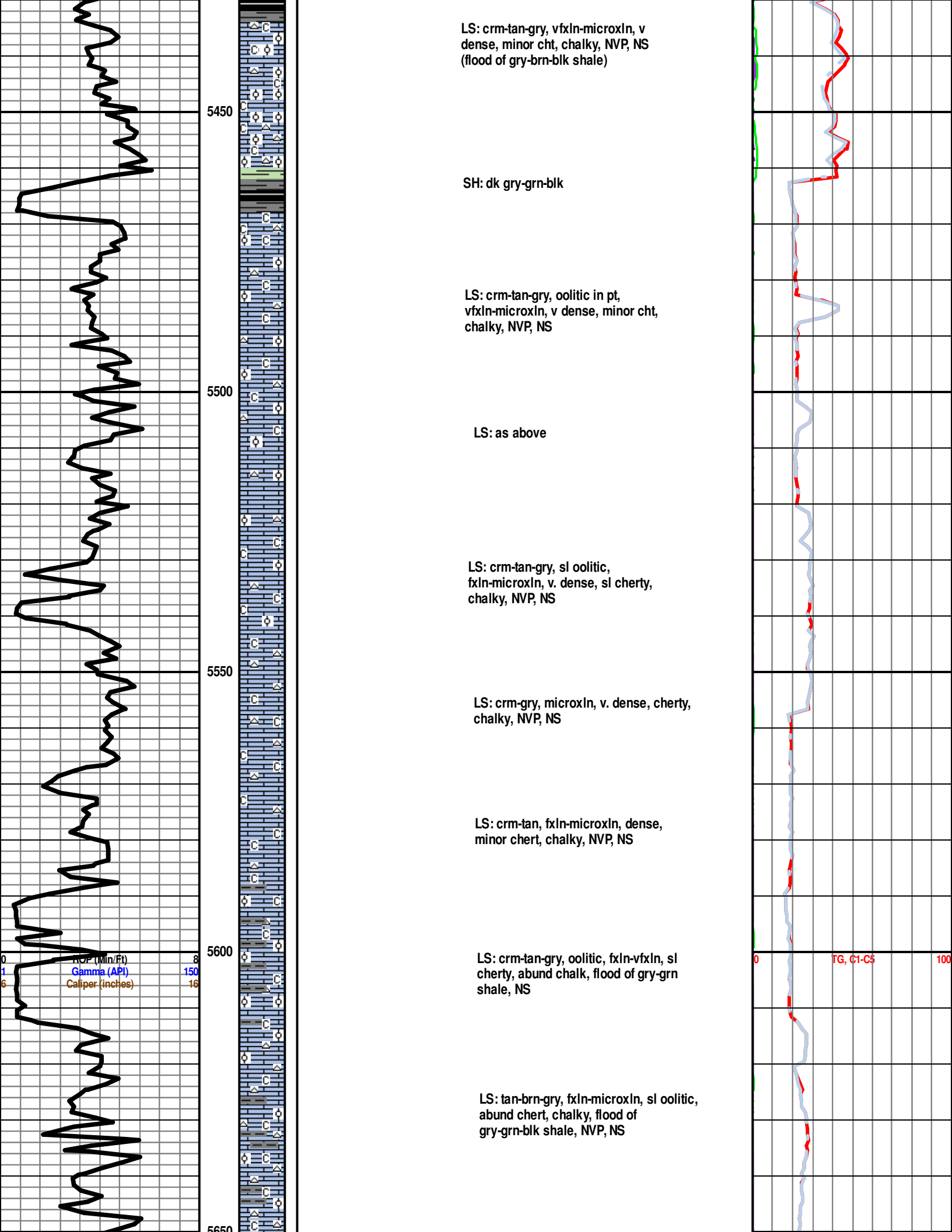
8  
150  
16

4600  
4650  
4700  
4750

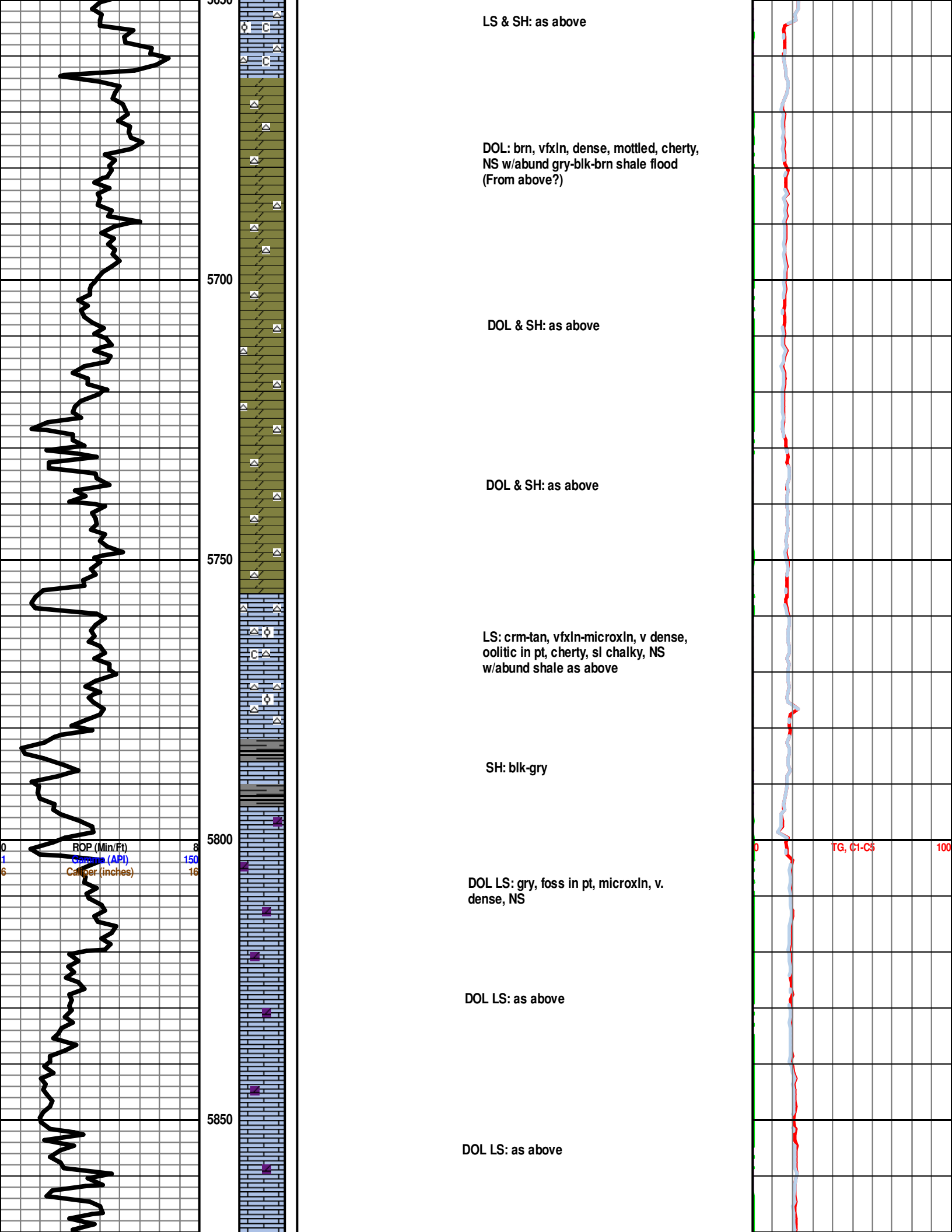




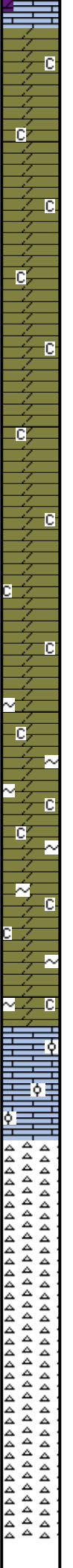
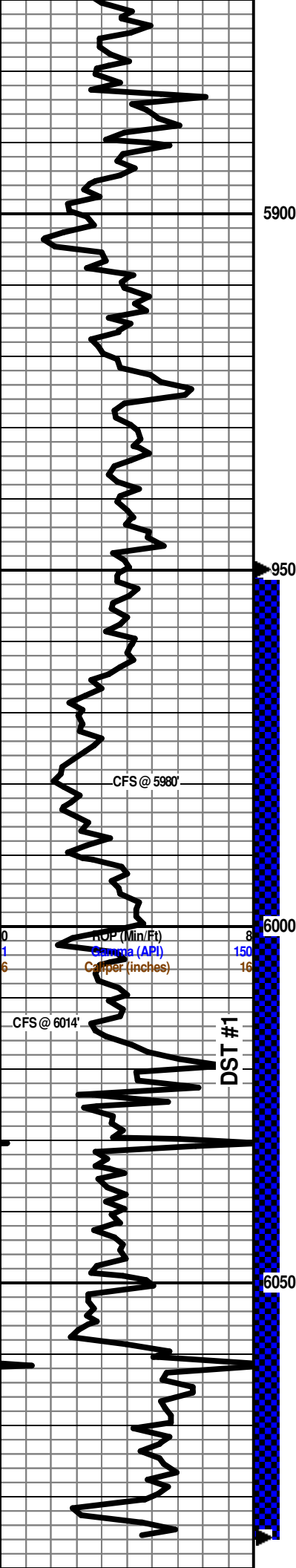








**COWLEY FACIES 5875**  
**(-3441)**



DOL: gry, sub-sucrosic, dense, chalky, NS

DOL: as above

DOL: as above, but mottled in pt

DOL: as above

DOL: crm-mostly gry, vfxln, sl glauc, chalky, mottled in pt, NS

CFS - DOL: crm-mostly gry, vfxln, chalky, sl glauc, mottled in pt, NS

DOL: as above

DOL: as above

CFS - DOL: crm-mostly gry, vfxln, chalky, sl glauc, mottled in pt, NS

LS: crm-tan, vfxln-mircoxn, oolitic in pt, v. dense, w/dol from above?, chalky, NS

CHT: wht, fresh, sharp, NVP, NS

CHT: as above

CHT: wht-clr-gry, fresh, sharp, NVP, NS

CFS - CHT: as above

CHT: as above

**RTD - 6086'**

