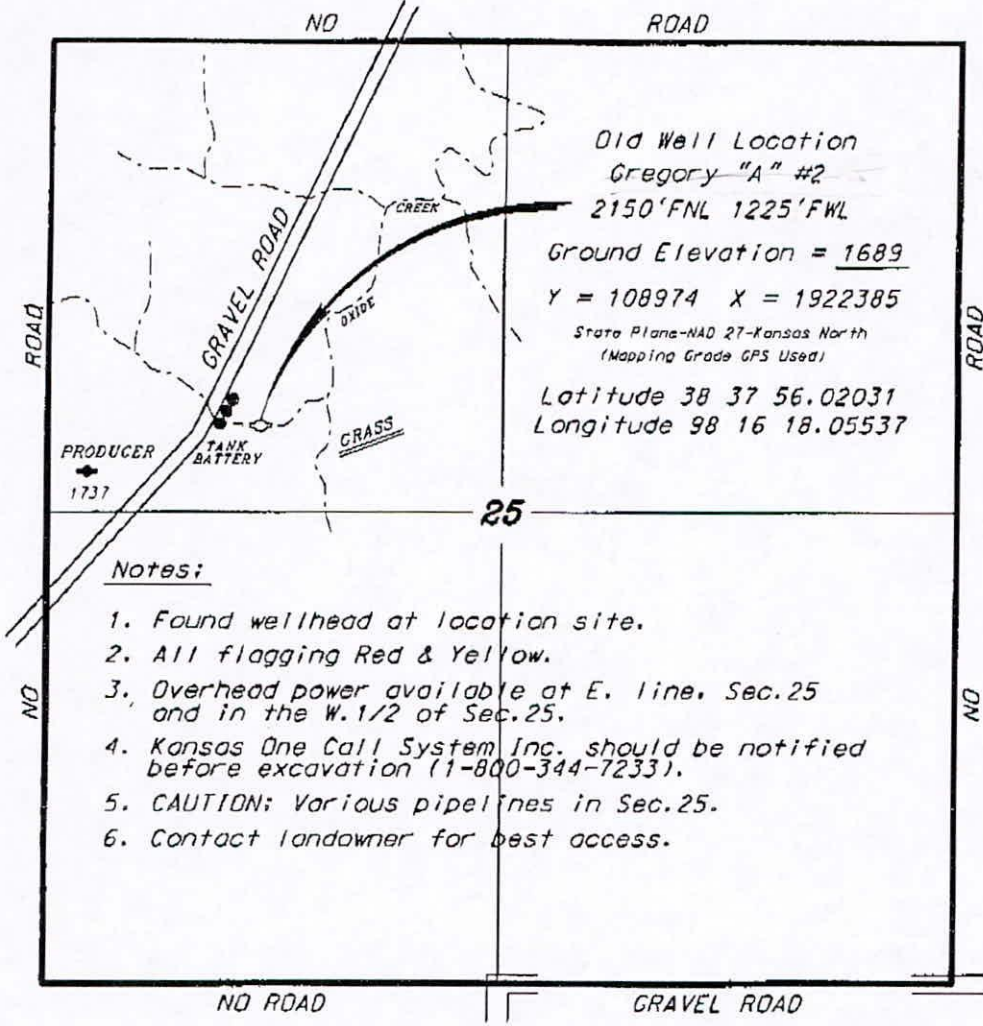


TREK AEC, LLC  
GREGORY LEASE  
NW. 1/4, SECTION 25, T16S, R9W  
ELLSWORTH COUNTY, KANSAS

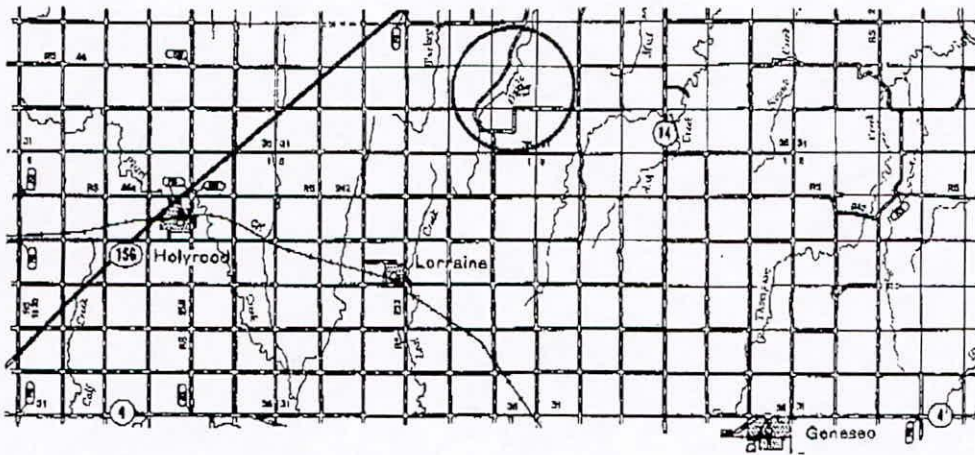
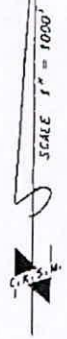


Old Well Location  
Gregory "A" #2  
2150'FNL 1225'FWL  
Ground Elevation = 1689  
Y = 108974 X = 1922385  
State Plane-NAD 27-Kansas North  
(Mapping Grade GPS Used)  
Latitude 38 37 56.02031  
Longitude 98 16 18.05537

Notes:

1. Found wellhead at location site.
2. All flagging Red & Yellow.
3. Overhead power available at E. line, Sec.25 and in the W.1/2 of Sec.25.
4. Kansas One Call System Inc. should be notified before excavation (1-800-344-7233).
5. CAUTION: Various pipelines in Sec.25.
6. Contact landowner for best access.

\*Ingress and egress to location as shown on this plat is per usage only and may not be legally opened for public use. Contact landowner, tenant and county road department for access.



\* Controlling data is based upon the best maps and photographs available to us and upon a regular section of land containing 340 acres.  
 \* Approximate section lines were determined using the normal standard of care of oilfield surveys practicing in the state of Kansas. The section corners, which establish the precise section lines, were not necessarily located, and the exact location of the well site location in the section is not guaranteed. Therefore, the operator seeking this service and accepting this plat and all other parties relying thereon agree to hold Central Kansas Oilfield Services, Inc., its officers and employees harmless from all losses, costs and expenses and said entities released from any liability from industrial or consequential damages.  
 \* Elevations derived from National Geodetic Vertical Datum.

Date December 3, 2012

CENTRAL KANSAS OILFIELD SERVICES, INC. (620)792-1977

6207925754