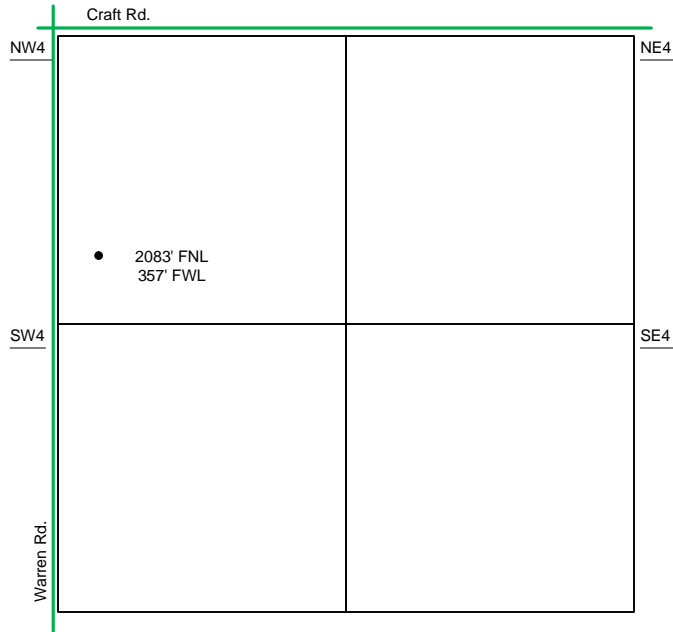
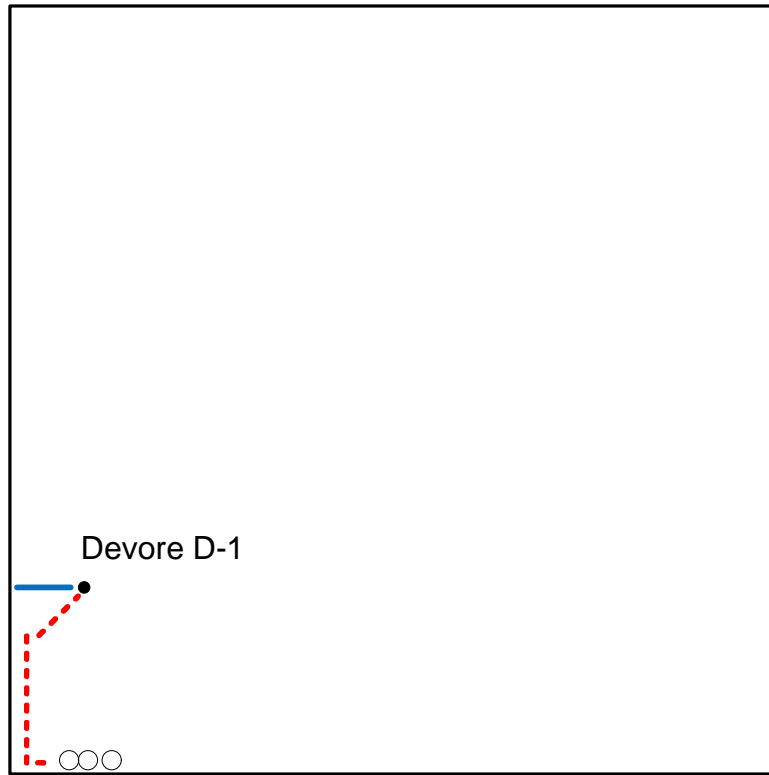


Proposed Plan of Construction
 Devore D-1
 Sec 27 T26S-R33W
 Finney County, KS



Sec 27 - T26S - R33W

NW/4



The Proposed Tank Battery for the Devore D-1 is located in the SW of the NW quarter.

Proposed Details of
 NW/4 Sec 27 -T26S -R33W

Note-Drawing **Not** to Scale

Proposed Site Diagram
 Devore D-1
 December 17, 2012

