



## DRILL STEM TEST REPORT

Prepared For: **LB exploration Inc**

2135 2ND RD Holyrood KS 67450 + 9021

ATTN: Steven

### **Strong #1**

### **35- 32- 13 Barber**

Start Date: 2012.01.13 @ 11:04:00

End Date: 2012.01.13 @ 19:47:00

Job Ticket #: 18726                      DST #: 2

Superior Testers Enterprises LLC  
PO Box 138 Great Bend KS 67530  
1-800-792-6902

Printed: 2012.01.13 @ 20:13:37

LB exploration Inc  
35- 32- 13 Barber  
Strong #1  
DST # 2  
Swoppe  
2012.01.13



# DRILL STEM TEST REPORT

LB exploration Inc  
 2135 2ND RD Holyrood KS 67450 + 9021  
 ATTN: Steven

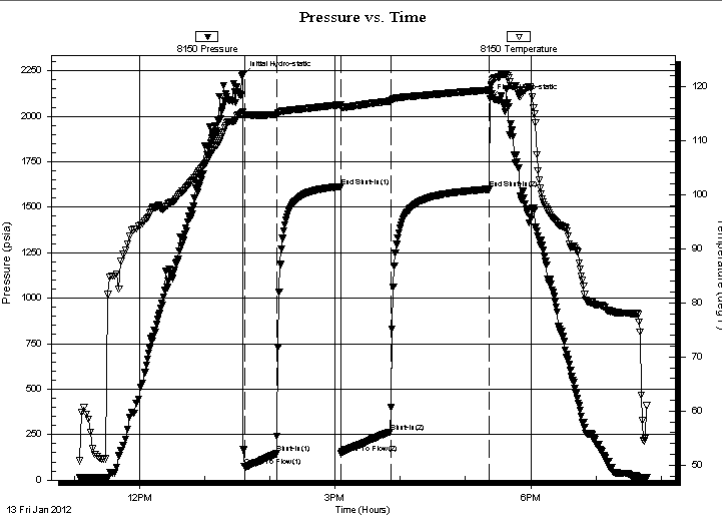
**35- 32- 13 Barber**  
**Strong #1**  
 Job Ticket: 18726 **DST#: 2**  
 Test Start: 2012.01.13 @ 11:04:00

## GENERAL INFORMATION:

Formation: **Swope**  
 Deviated: No Whipstock: ft (KB)  
 Time Tool Opened: 13:36:30  
 Time Test Ended: 19:47:00  
 Interval: **4321.00 ft (KB) To 4359.00 ft (KB) (TVD)**  
 Total Depth: 4359.00 ft (KB) (TVD)  
 Hole Diameter: 7.88 inches Hole Condition: Fair  
 Test Type: Conventional Bottom Hole (Initial)  
 Tester: Jared Scheck  
 Unit No: 3320 - Pratt-80  
 Reference Elevations: 1692.00 ft (KB)  
 1682.00 ft (CF)  
 KB to GR/CF: 10.00 ft

**Serial #: 8150** **Inside**  
 Press @ RunDepth: 264.32 psia @ 4355.00 ft (KB) Capacity: 5000.00 psia  
 Start Date: 2012.01.13 End Date: 2012.01.13 Last Calib.: 2012.01.13  
 Start Time: 11:04:00 End Time: 19:47:00 Time On Btm: 2012.01.13 @ 13:35:00  
 Time Off Btm: 2012.01.13 @ 17:22:30

**TEST COMMENT:** 1st Opening 30 Minutes-Strong blow built bottom of bucket less then 1 minute gas to surface 15 minutes  
 1st Shut-in 60 Minutes-Blow back  
 2nd Opening 45 Minutes- Strong blow built bottom of bucket less then 1 minutes  
 2nd Shut-in 90 Minutes-Blow back



## PRESSURE SUMMARY

Time (Min.)	Pressure (psia)	Temp (deg F)	Annotation
0	2225.31	115.36	Initial Hydro-static
2	77.87	114.81	Open To Flow (1)
31	146.64	114.85	Shut-In(1)
90	1614.19	116.66	End Shut-In(1)
91	146.10	116.23	Open To Flow (2)
136	264.32	117.32	Shut-In(2)
227	1599.14	119.34	End Shut-In(2)
228	2098.68	119.31	Final Hydro-static

## Recovery

Length (ft)	Description	Volume (bbl)
120.00	Muddy water 40% mud 60%w ater	1.68
320.00	Water 10% mud 90%w ater	4.49
0.00	Chlorides 88,000	0.00
0.00	Resistivity .1 @65 degrees	0.00
0.00	3684 Gas in pipe	0.00

## Gas Rates

	Choke (inches)	Pressure (psia)	Gas Rate (Mcf/d)
First Gas Rate	0.38	5.00	18.32
Last Gas Rate	0.13	36.00	13.47
Max. Gas Rate	0.13	39.00	14.60



# DRILL STEM TEST REPORT

LB exploration Inc  
 2135 2ND RD Holyrood KS 67450 + 9021  
 ATTN: Steven

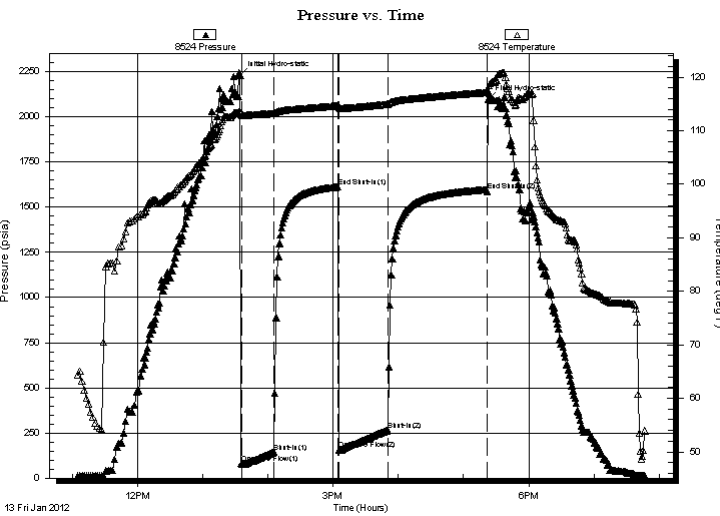
**35- 32- 13 Barber**  
**Strong #1**  
 Job Ticket: 18726 **DST#: 2**  
 Test Start: 2012.01.13 @ 11:04:00

## GENERAL INFORMATION:

Formation: **Swope**  
 Deviated: No Whipstock: ft (KB)  
 Time Tool Opened: 13:36:30  
 Time Test Ended: 19:47:00  
 Interval: **4321.00 ft (KB) To 4359.00 ft (KB) (TVD)**  
 Total Depth: 4359.00 ft (KB) (TVD)  
 Hole Diameter: 7.88 inches Hole Condition: Fair  
 Test Type: Conventional Bottom Hole (Initial)  
 Tester: Jared Scheck  
 Unit No: 3320 - Pratt-80  
 Reference Elevations: 1692.00 ft (KB)  
 1682.00 ft (CF)  
 KB to GR/CF: 10.00 ft

**Serial #: 8524 Outside**  
 Press @ RunDepth: 1588.89 psia @ 4356.00 ft (KB) Capacity: 5000.00 psia  
 Start Date: 2012.01.13 End Date: 2012.01.13 Last Calib.: 2012.01.13  
 Start Time: 11:04:00 End Time: 19:47:00 Time On Btm: 2012.01.13 @ 13:34:30  
 Time Off Btm: 2012.01.13 @ 17:22:30

**TEST COMMENT:** 1st Opening 30 Minutes-Strong blow built bottom of bucket less then 1 minute gas to surface 15 minutes  
 1st Shut-in 60 Minutes-Blow back  
 2nd Opening 45 Minutes- Strong blow built bottom of bucket less then 1 minutes  
 2nd Shut-in 90 Minutes-Blow back



## PRESSURE SUMMARY

Time (Min.)	Pressure (psia)	Temp (deg F)	Annotation
0	2227.58	113.61	Initial Hydro-static
2	79.48	112.93	Open To Flow (1)
31	145.49	113.20	Shut-In(1)
90	1612.94	114.68	End Shut-In(1)
91	157.83	114.26	Open To Flow (2)
136	264.56	114.97	Shut-In(2)
227	1588.89	117.17	End Shut-In(2)
228	2095.50	117.38	Final Hydro-static

## Recovery

Length (ft)	Description	Volume (bbl)
120.00	Muddy water 40% mud 60% w ater	1.68
320.00	Water 10% mud 90% w ater	4.49
0.00	Chlorides 88,000	0.00
0.00	Resistivity .1 @65 degrees	0.00
0.00	3684 Gas in pipe	0.00

## Gas Rates

	Choke (inches)	Pressure (psia)	Gas Rate (Mcf/d)
First Gas Rate	0.38	5.00	18.32
Last Gas Rate	0.13	36.00	13.47
Max. Gas Rate	0.13	39.00	14.60



# DRILL STEM TEST REPORT

**TOOL DIAGRAM**

LB exploration Inc  
 2135 2ND RD Holyrood KS 67450 + 9021  
 ATTN: Steven

**35- 32- 13 Barber**  
**Strong #1**  
 Job Ticket: 18726      **DST#: 2**  
 Test Start: 2012.01.13 @ 11:04:00

**Tool Information**

Drill Pipe:	Length: 4304.00 ft	Diameter: 3.80 inches	Volume: 60.37 bbl	Tool Weight: 1000.00 lb
Heavy Wt. Pipe:	Length: 0.00 ft	Diameter: 0.00 inches	Volume: 0.00 bbl	Weight set on Packer: 20000.00 lb
Drill Collar:	Length: 0.00 ft	Diameter: 0.00 inches	Volume: 0.00 bbl	Weight to Pull Loose: 70000.00 lb
			<u>Total Volume: 60.37 bbl</u>	Tool Chased 0.00 ft
Drill Pipe Above KB:	11.00 ft			String Weight: Initial 62000.00 lb
Depth to Top Packer:	4321.00 ft			Final 63000.00 lb
Depth to Bottom Packer:	ft			
Interval between Packers:	38.00 ft			
Tool Length:	66.00 ft			
Number of Packers:	2	Diameter: 6.75 inches		

Tool Comments:

Tool Description	Length (ft)	Serial No.	Position	Depth (ft)	Accum. Lengths
SHut-InTool	5.00		Inside	4298.00	
Hydraulic Tool	5.00			4303.00	
Jars	6.00			4309.00	
Safety Joint	2.00			4311.00	
Packer	5.00			4316.00	28.00      Bottom Of Top Packer
Packer	5.00			4321.00	
Anchor	33.00			4354.00	
Recorder	1.00	8150	Inside	4355.00	
Recorder	1.00	8524	Outside	4356.00	
Bullnose	3.00			4359.00	38.00      Bottom Packers & Anchor
<b>Total Tool Length:</b>	<b>66.00</b>				



# DRILL STEM TEST REPORT

## FLUID SUMMARY

LB exploration Inc  
 2135 2ND RD Holyrood KS 67450 + 9021  
 ATTN: Steven

**35- 32- 13 Barber**  
**Strong #1**  
 Job Ticket: 18726      **DST#: 2**  
 Test Start: 2012.01.13 @ 11:04:00

### Mud and Cushion Information

Mud Type: Gel Chem	Cushion Type:	Oil API:	deg API
Mud Weight: 9.00 lb/gal	Cushion Length: ft	Water Salinity:	ppm
Viscosity: 47.00 sec/qt	Cushion Volume: bbl		
Water Loss: 8.80 in <sup>3</sup>	Gas Cushion Type:		
Resistivity: ohm.m	Gas Cushion Pressure: psia		
Salinity: 5000.00 ppm			
Filter Cake: 1.00 inches			

### Recovery Information

Recovery Table

Length ft	Description	Volume bbl
120.00	Muddy w ater 40%mud 60%w ater	1.683
320.00	Water 10% mud 90%w ater	4.489
0.00	Chlorides 88,000	0.000
0.00	Resistivity .1 @65 degrees	0.000
0.00	3684 Gas in pipe	0.000

Total Length: 440.00 ft      Total Volume: 6.172 bbl  
 Num Fluid Samples: 0      Num Gas Bombs: 0      Serial #:  
 Laboratory Name:      Laboratory Location:  
 Recovery Comments:



# DRILL STEM TEST REPORT

**GAS RATES**

LB exploration Inc  
2135 2ND RD Holyrood KS 67450 + 9021  
ATTN: Steven

**35- 32- 13 Barber**  
**Strong #1**  
Job Ticket: 18726      **DST#: 2**  
Test Start: 2012.01.13 @ 11:04:00

## Gas Rates Information

Temperature: 59 (deg F)  
Relative Density: 0.65  
Z Factor: 0.8

Gas Rates Table

Flow Period	Elapsed Time	Choke (inches)	Pressure (psia)	Gas Rate (Mcf/d)
1	10	0.38	5.00	18.32
1	10	0.38	19.00	69.60
2	10	0.13	39.00	14.60
2	10	0.13	22.00	8.23
2	10	0.13	28.00	10.48
2	10	0.13	36.00	13.47

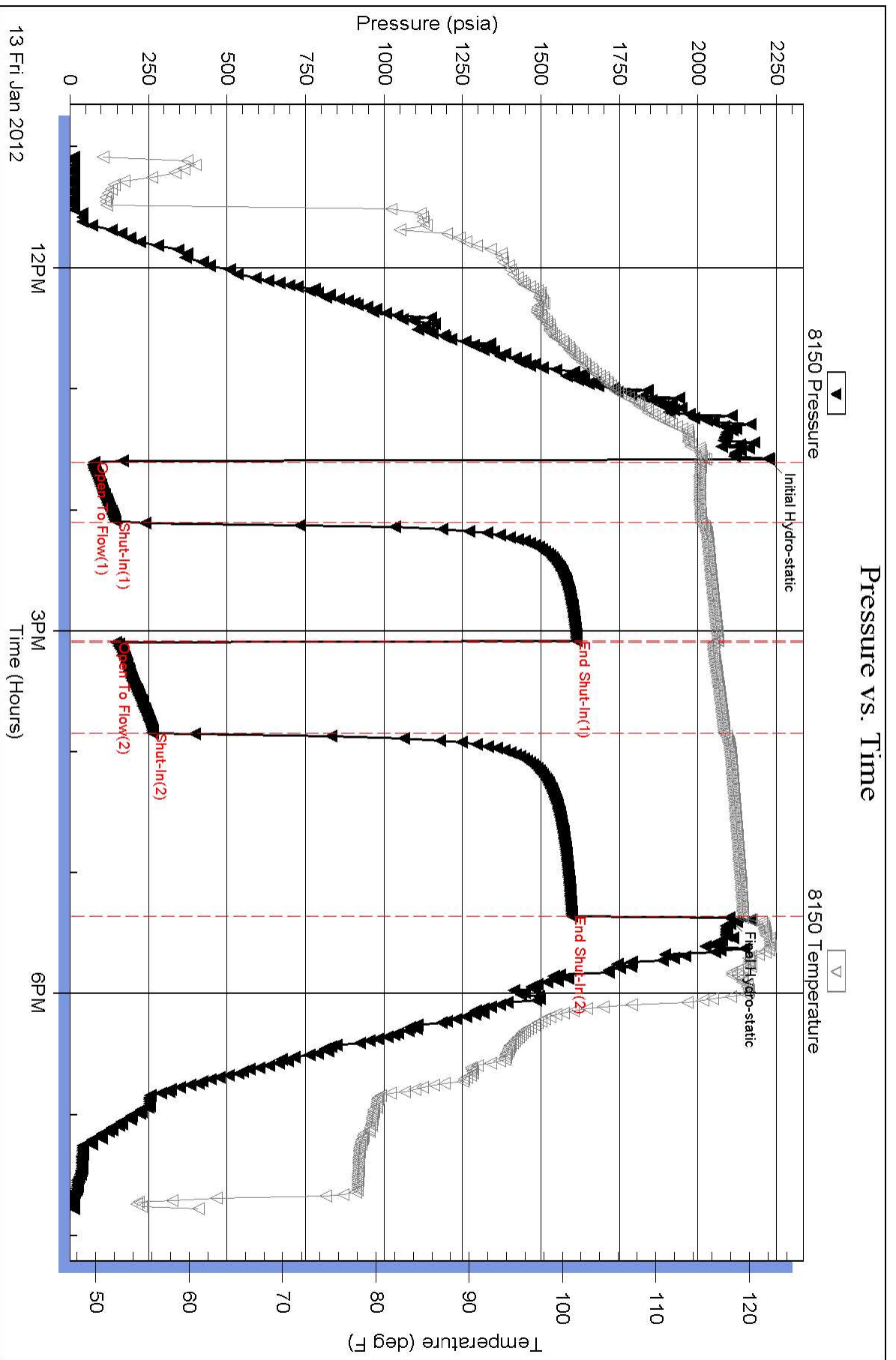
Serial #: 8150

Inside

LB exploration Inc

Strong #1

DST Test Number: 2



### Pressure vs. Time

