

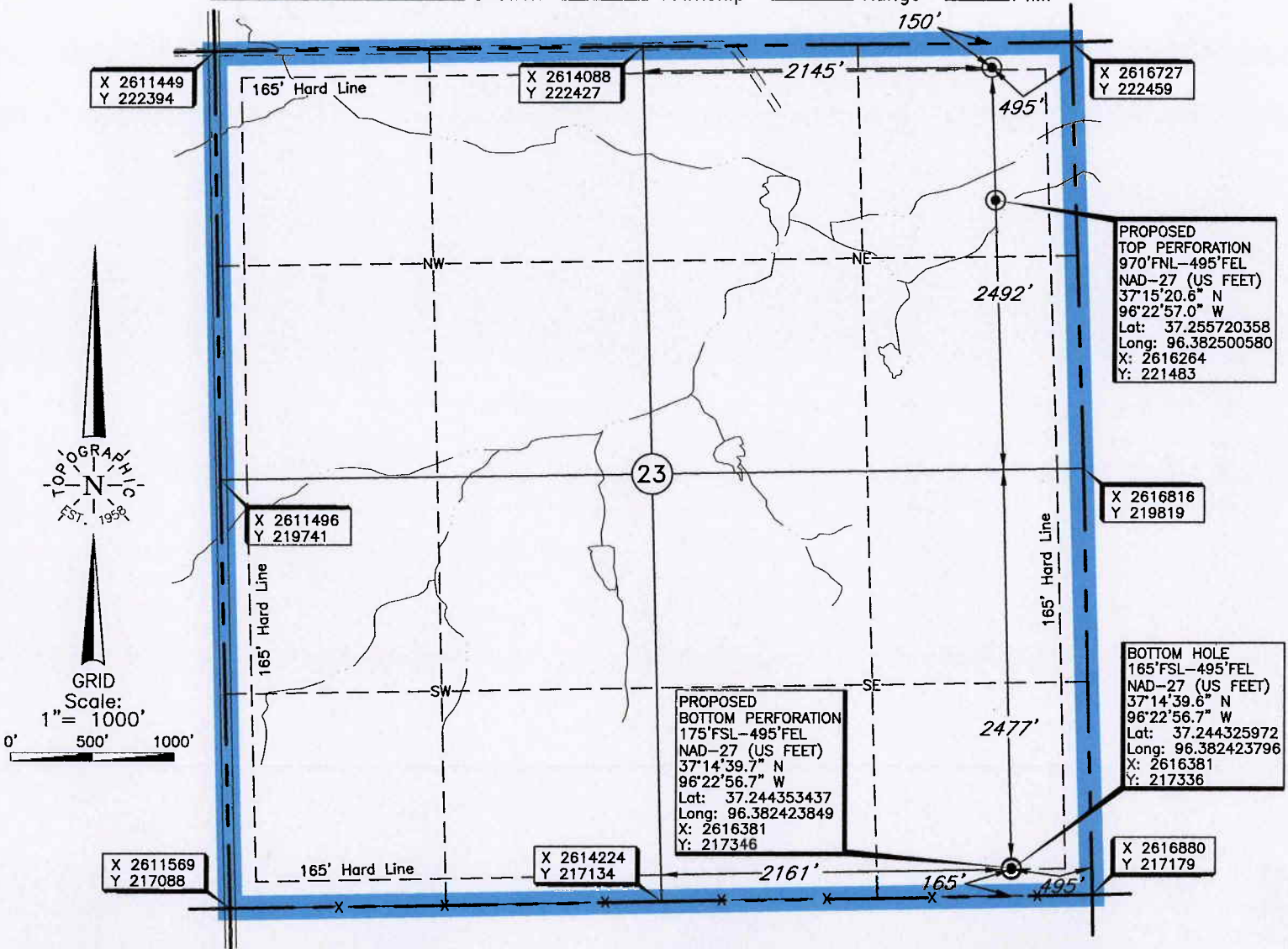
**TOPOGRAPHIC LAND SURVEYORS**

6709 NORTH CLASSEN BLVD., OKLA. CITY, OKLA. 73116 \* LOCAL (405) 843-4847 \* OUT OF STATE (800) 654-3219  
 Certificate of Authorization No. LS-99, Exp. Dec. 31, 2013

CHAUTAUQUA

County, Kansas

150'FNL - 495'FEL Section 23 Township 32S Range 9E P.M.



Distances shown in (parenthesis) are calculated based upon the Quarter Section being 2640 feet, those shown in [brackets] are based on GLO (General Land Office) distances and have NOT been measured on the ground.

BOTTOM HOLE, LANDING POINT, AND DRILL PATH INFORMATION PROVIDED BY OPERATOR LISTED, NOT SURVEYED; DISTANCE BETWEEN DRILL PATHS ARE CALCULATED AND CORNER COORDINATES ARE TAKEN FROM POINTS SURVEYED IN THE FIELD.

Operator: NEMAHA OIL AND GAS

Lease Name: LAMPSON

Well No.: 1A-23-32-9H

**ELEVATION:**  
1063' Gr. at Stake

Topography & Vegetation Loc. fell terraced pasture

Good Drill Site? Yes

Reference Stakes or Alternate Location  
 Stakes Set None

Best Accessibility to Location From North off lease road

Distance & Direction from Hwy Jct or Town From Cedarvale, Kansas, go ± 5.5 miles East on US Hwy 166, then go ± 10 miles North, and 0.5 mile East to the North Quarter Corner of Section 23, T32S - R9E.

DATUM: NAD-27  
 LAT: 37°15'28.7"N  
 LONG: 96°22'57.1"W  
 LAT: 37.257972904° N  
 LONG: 96.382531058° W  
 STATE PLANE  
 COORDINATES: (US Feet)  
 ZONE: KS SOUTH  
 X: 2616237  
 Y: 222303

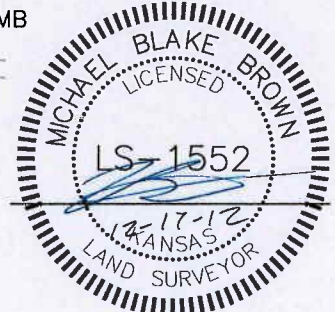
Revision  A Date of Drawing: Dec. 17, 2012  
 Invoice # 193768 Date Staked: Dec. 13, 2012

NMB

**CERTIFICATE:**

I, Michael Blake Brown a Kansas Licensed Land Surveyor and an authorized agent of Topographic Land Surveyors, do hereby certify that the above described well location was surveyed and staked on the ground as shown herein.

Kansas Lic. No. 1552



This information was gathered with a GPS receiver with Sub-Meter accuracy.

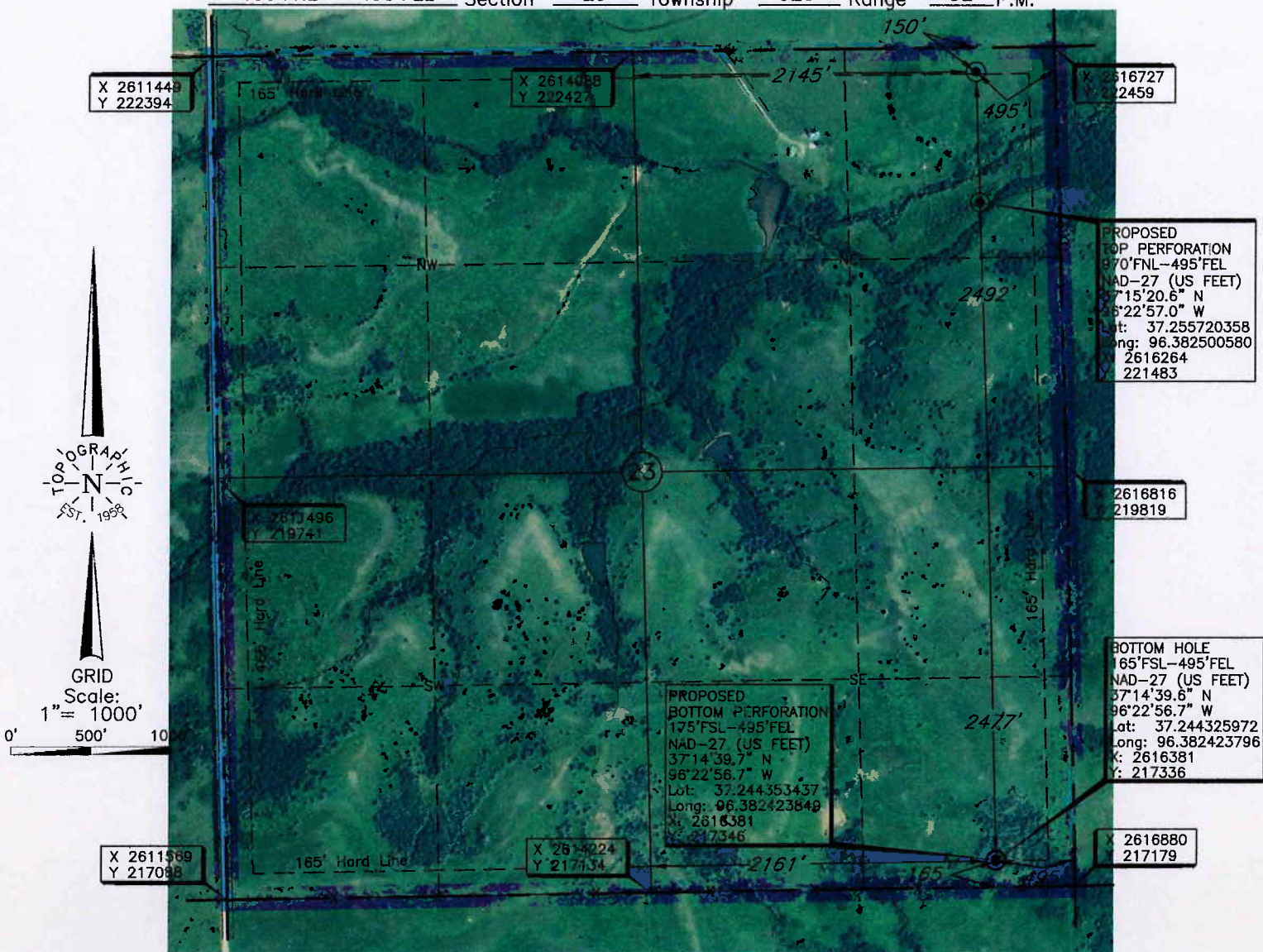
**TOPOGRAPHIC LAND SURVEYORS**

6709 NORTH CLASSEN BLVD., OKLA. CITY, OKLA. 73116 \* LOCAL (405) 843-4847 \* OUT OF STATE (800) 654-3219  
 Certificate of Authorization No. LS-99, Exp. Dec. 31, 2013

CHAUTAUQUA

County, Kansas

150'FNL - 495'FEL Section 23 Township 32S Range 9E P.M.



Distances shown in (parenthesis) are calculated based upon the Quarter Section being 2640 feet, those shown in [brackets] are based on GLD (General Land Office) distances and have NOI been measured on the ground.

**BOTTOM HOLE, LANDING POINT, AND DRILL PATH**  
 INFORMATION PROVIDED BY OPERATOR LISTED, NOT SURVEYED;  
 DISTANCE BETWEEN DRILL PATHS ARE CALCULATED AND CORNER COORDINATES ARE TAKEN FROM POINTS SURVEYED IN THE FIELD.

Operator: NEMAHA OIL AND GAS

Lease Name: LAMPSON

Well No.: 1A-23-32-9H

**ELEVATION:**  
1063' Gr. at Stake

Topography & Vegetation Loc. fell terraced pasture

Good Drill Site? Yes Reference Stakes or Alternate Location  
 Stakes Set None

Best Accessibility to Location From North off lease road

Distance & Direction from Hwy Jct or Town From Cedarvale, Kansas, go ± 5.5 miles East on US Hwy 166, then go ± 10 miles North, and 0.5 mile East to the North Quarter Corner of Section 23, T32S - R9E.

**DATUM: NAD-27**  
 LAT: 37°15'28.7"N  
 LONG: 96°22'57.1"W  
 LAT: 37.257972904° N  
 LONG: 96.382531058° W  
 STATE PLANE  
 COORDINATES: (US Feet)  
 ZONE: KS SOUTH  
 X: 2616237  
 Y: 222303

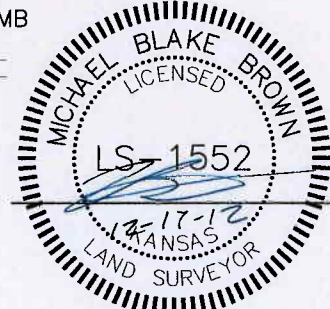
Revision  A Date of Drawing: Dec. 17, 2012  
 Invoice # 193768 Date Staked: Dec. 13, 2012

NMB

**CERTIFICATE:**

I, Michael Blake Brown a Kansas Licensed Land Surveyor and an authorized agent of Topographic Land Surveyors, do hereby certify that the above described well location was surveyed and staked on the ground as shown herein.

Kansas Lic. No. 1552



This information was gathered with a GPS receiver with Sub-Meter accuracy.